



**Agenda Item B.1**  
**DISCUSSION/ACTION**  
**Meeting Date: May 14, 2025**

---

**TO:** Chair and Members of the Parks and Recreation Commission

**FROM:** JoAnne Plummer, Neighborhood Services Director

**SUBJECT:** Stow Grove Park Final Playground Selection and New Restroom Layout

**RECOMMENDATION:**

- A. Review the revised playground designs and make a selection for the final design, and;
- B. Review and support the staff recommendation for the layout for the new accessible restroom to be installed at Stow Grove Park.

**BACKGROUND:**

At the January 8<sup>th</sup>, 2025 meeting, the Parks and Recreation Commission received a presentation entitled “Stow Grove Park Universal Playground and Restroom Location Presentation of Options”. The project team presented the Commission with two playground design options. Commissioners, while unanimously favoring one design, asked staff to explore the feasibility of incorporating elements of the second design into the final playground.

The presentation also allowed for the selection of location for an Americans with Disabilities Act (ADA) accessible restroom near the playground. While the Stow Grove Master Plan was clear that the second restroom adjacent to the inclusive playground would need to be accessible, the project team stated that it would return to the Parks and Recreation Commission with final floorplans that would fit the selected location to allow the Commission and the Public an opportunity to provide input.

**DISCUSSION:**

The Universal Playground

In January 2025, the Commission supported “Playground Design #1” (Attachment 1). The main feature of this design included the Super NetPlex Tower, an inclusive, enclosed climbing tower, in addition to multiple additional accessible features throughout the design layout. While the Commission favored the overall design of playground #1, there was

unanimous interest in the Quantis M.2 Inclusive Net Play Structure featured in “Playground Design #2”. The Commission requested that the project team explore the feasibility of including the Quantis Structure into a final “Playground Design #1”.

The project team met and re-thought the layout of the design to accommodate the addition of the Quantis structure. The project team is presenting “Playground Design #3” (Attachment 2). This design builds on the original elements of “Playground Design #1”, featuring the Super NetFlex Tower and, as requested, incorporates the Quantis M.2 Inclusive Net Play Structure. To accomplish this, both in terms of space and budget, the ramped play structure that originally connected to the Super NetPlex Tower was removed from the design, and the tower was re-located to accommodate the required clearance and spacing of features. Additionally, the Log Crawl Tunnel was also removed from the original design but was replaced with an additional Chill Spinner feature.

### Accessible Restroom Layout

During the January 8<sup>th</sup>, 2025 meeting, the Commission endorsed the location of the restroom and the use of a prefabricated building. Prefabrication was decided upon for cost, environmental, and noise considerations. According to the Stow Grow Park Master Plan, the secondary bathroom that is to be built next to the universal playground is to provide as many ADA, family, and gender-neutral bathrooms as possible, and provide for an ADA compliant adult changing table. Based on the Master Plan criteria, the location and building methodology, the project team explored a variety of options and vendors and arrived at two primary restroom options (Attachment 3).

In both options, one restroom is significantly larger than the others. This is due to the inclusion of the adult changing table and the required clearances needed by the California Building Code. The ability to offer this inclusive feature adjacent to the City’s only universal playground is incredibly important. Due to the size of the ADA restrooms, they may also serve as a much needed family restroom.

In reviewing the restroom options, one layout has three bathrooms and the other has four. The difference in the options presented is to either: a) have two standard size, gender neutral restrooms, and one ADA compliant gender-neutral restroom (that can double as a family restroom), for a total of four (4) restrooms; or b). have two ADA compliant restrooms (that can double as family restrooms), for a total of three (3) restrooms. It is the strong recommendation of the project team that the City move forward with the three-restroom, fully ADA compliant, floor plan, as it best addresses the goals of the Stow Park Master Plan.

While it would be ideal to have more restrooms available in an area where children are primary users, the reality is that this will be Goleta’s first, and likely only, universal playground, attracting park users from surrounding areas who may only be able to utilize a restroom that is ADA accessible. Additionally, the larger spaces will also allow for a parent to take multiple children into the restroom at once, without having to leave

someone behind. This recommendation allows any person the ability to use any open restroom at any time.

### **FISCAL IMPACTS**

The playground cost will increase slightly due to the incorporation of both the Super NetPlex Tower and the Quantis M.2 Inclusive Net Play Structure, but the project team has been able to keep costs relatively consistent to the original cost estimates.

The restroom costs are still being determined, but the design choice does not impact the cost of the structure significantly. The fiscal impact of this decision is related to the construction document costs as the project is advancing quickly and final determinations must be made.

Construction is still set to begin by the end of 2025, with project completion no later than September of 2026.

### **Respectfully Submitted:**



---

JoAnne Plummer,  
Neighborhood Services Director

### **ATTACHMENTS:**

1. Playground Design #1
2. Playground Design #3
3. Restroom Options

**ATTACHMENT 1**

Playground Design #1



Stow Grove Park  
Inclusive Playground  
Design Option #1  
SUPER NETPLEX





## Key Design Elements:

- **Dynamic Inclusive Play Value:** This design is a hybrid between traditional and modern inclusive play.
- **Traditional inclusive play elements:**
  - Wheelchair Accessible Ramped Structures
  - 2-5 & 5-12 Full Harness Inclusive Play Swings &
  - Two different Multi-User/Group Swings
  - Rollerslide
  - Cozy Dome for children who experience sensory dysregulation and need a quiet space.
- **Modern Inclusive Play:**
  - **We-Go-Round** – Wheelchair Accessible Spinner
  - **We-Go-Swing** – Wheelchair Accessible Swing
  - **12' Super NetPlex Tower** – A spiral “staircase” made of soft belting materials allows children with limited mobility to comfortably crawl, scoot or climb to the top of the tower to enjoy a birds eye view of the park and trees.
- **Nature Inspired Design Aesthetic:** The equipment’s natural colors and Tree-like Post Toppers and Roofs blend into the parks beautiful tree-filled landscape while some brighter floral flourishes and tall tower is still entice children to come play!
- **Shaded Seating Areas for Caretakers:** Several shaded seating areas have been placed strategically around the play areas. The shades have been placed in areas that are less covered by the existing tree canopy.



## Stow Grove Park Inclusive Playground

1184542-01-01-01 • 04.09.2024





Group/Multi-User Swings

Log Crawl Tunnel

Inclusive Swings

We-Go-Swing  
Wheelchair Accessible  
Swing

We-Go-Spin  
Wheelchair Accessible  
Spinner

We-Saw

Ramped Play Structures

Super NetPlex Tower

Curva Spinner

Cozy Dome

Balance Challenge

Shaded Seating



# Stow Grove Park Inclusive Playground

1184542-01-01-01 • 04.09.2024





5-12 AGE

TOTAL ELEVATED PLAY COMPONENTS	14		
TOTAL ELEVATED COMPONENTS ACCESSIBLE BY RAMP	11	REQUIRED	7
TOTAL ELEVATED COMPONENTS ACCESSIBLE BY TRANSFER	2	REQUIRED	0
TOTAL ACCESSIBLE GROUND LEVEL COMPONENTS SHOWN	12	REQUIRED	0
TOTAL DIFFERENT TYPES OF GROUND LEVEL COMPONENTS	5	REQUIRED	5

2-5 AGE

TOTAL ELEVATED PLAY COMPONENTS	9		
TOTAL ELEVATED COMPONENTS ACCESSIBLE BY RAMP	5	REQUIRED	5
TOTAL ELEVATED COMPONENTS ACCESSIBLE BY TRANSFER	4	REQUIRED	0
TOTAL ACCESSIBLE GROUND LEVEL COMPONENTS SHOWN	1	REQUIRED	0
TOTAL DIFFERENT TYPES OF GROUND LEVEL COMPONENTS	1	REQUIRED	1

2-12 AGE

TOTAL ELEVATED PLAY COMPONENTS	0		
TOTAL ELEVATED COMPONENTS ACCESSIBLE BY RAMP	0	REQUIRED	0
TOTAL ELEVATED COMPONENTS ACCESSIBLE BY TRANSFER	0	REQUIRED	0
TOTAL ACCESSIBLE GROUND LEVEL COMPONENTS SHOWN	9	REQUIRED	0
TOTAL DIFFERENT TYPES OF GROUND LEVEL COMPONENTS	3	REQUIRED	3

landscape  
structures

THIS DRAWING IS THE PROPERTY OF LANDSCAPE STRUCTURES, INC. AND IS NOT TO BE REPRODUCED OR TRANSMITTED IN ANY FORM OR BY ANY MEANS, ELECTRONIC OR MECHANICAL, INCLUDING PHOTOCOPYING, RECORDING, OR BY ANY INFORMATION STORAGE AND RETRIEVAL SYSTEM, WITHOUT THE WRITTEN PERMISSION OF LANDSCAPE STRUCTURES, INC.

THIS PLAY AREA EQUIPMENT IS DESIGNED FOR KIDS 2-12 YEARS UNLESS OTHERWISE NOTED ON PLAN.

IT IS THE MANUFACTURER'S OPINION THAT THIS PLAY AREA MEETS OR EXCEEDS THE ADA ACCESSIBILITY STANDARDS, ASSUMING AN ACCESSIBLE PROTECTIVE SURFACING IS PROVIDED, AS INDICATED, OR WITHIN THE EXISTING USE ZONE.

THIS CONCEPTUAL PLAN AND SECTION INFORMATION IS SUBJECT TO US, BASED ON INFORMATION PROVIDED BY THE CLIENT. LANDSCAPE STRUCTURES, INC. DOES NOT WARRANT THE ACCURACY OF THE INFORMATION PROVIDED BY THE CLIENT. LANDSCAPE STRUCTURES, INC. DOES NOT WARRANT THE ACCURACY OF THE INFORMATION PROVIDED BY THE CLIENT. LANDSCAPE STRUCTURES, INC. DOES NOT WARRANT THE ACCURACY OF THE INFORMATION PROVIDED BY THE CLIENT.

DESIGN & CONSTRUCTION STANDARDS: THIS PLAN IS A CONCEPTUAL DESIGN. THE MANUFACTURER'S OPINION IS BASED ON THE INFORMATION PROVIDED BY THE CLIENT. LANDSCAPE STRUCTURES, INC. DOES NOT WARRANT THE ACCURACY OF THE INFORMATION PROVIDED BY THE CLIENT. LANDSCAPE STRUCTURES, INC. DOES NOT WARRANT THE ACCURACY OF THE INFORMATION PROVIDED BY THE CLIENT.

ADA COMPLIANCE: THIS PLAN IS A CONCEPTUAL DESIGN. THE MANUFACTURER'S OPINION IS BASED ON THE INFORMATION PROVIDED BY THE CLIENT. LANDSCAPE STRUCTURES, INC. DOES NOT WARRANT THE ACCURACY OF THE INFORMATION PROVIDED BY THE CLIENT. LANDSCAPE STRUCTURES, INC. DOES NOT WARRANT THE ACCURACY OF THE INFORMATION PROVIDED BY THE CLIENT.

IT IS THE MANUFACTURER'S OPINION AND INTENT THAT THE LAYOUT OF THESE COMPONENTS CONFORM WITH THE U.S. CONSUMER PRODUCT SAFETY COMMISSION'S (CPSC) HANDBOOK FOR PUBLIC PLAYGROUND SAFETY.

DESIGNED BY:  
JAG  
COPYRIGHT: 4/8/24  
LANDSCAPE STRUCTURES, INC.  
401 N. 1ST ST.  
STOUGHTON, MA 01970  
508-538-8878  
www.landscape-structures.com

Date Previous Drawing # Initials



Stow Grove Park  
Inclusive Playground  
Goleta, CA

RecWest Outdoor  
Products, Inc.  
Nathaniel Stutz

SYSTEM TYPE:  
PlayBooster

DRAWING #:  
1184542-01-01



## **ATTACHMENT 2**

Playground Design #3



Stow Grove Park  
Inclusive Playground  
Design Option #3  
SUPER NETPLEX &  
QUANTIS M.2 COMBO





## Key Design Elements:

- **Dynamic Inclusive Play Value:** This design option contains a more progressive and modern version of inclusive play that features less ramps, and creating safe and comfortable spaces with the use of unique materials and more independent play elements that specifically target children with a range of disabilities and ability.
- **Traditional inclusive play elements:**
  - A Wheelchair Accessible Ramped Structure
  - 2-5 & 5-12 Full Harness Inclusive Play Swings &
  - Two different Multi-User/Group Swings
  - Cozy Dome for children who experience sensory dysregulation and need a quiet space.
- **Modern Inclusive Play:**
  - **We-Go-Round** - Wheelchair Accessible Spinner
  - **We-Go-Swing** - Wheelchair Accessible Swing
  - **The Quantis M.2**, which includes a transfer accessible path directly through the center of the structure that is made of a soft belting material, perfect for children with limited mobility to scoot, crawl, and climb through. This element truly allow children to play together on the same structure. Areas underneath the structure are also fully wheelchair accessible so that everyone can be close to the "the action!"
  - **12' Super NetPlex Tower** - A spiral "staircase" made of soft belting materials allows children with limited mobility to comfortably crawl, scoot or climb to the top of the tower to enjoy a birds eye view of the park and trees.
- **Shaded Seating Areas for Caretakers:** Several shaded seating areas have been placed strategically around the play areas. The shades have been placed in areas that are less covered by the existing tree canopy.



## 1184542-03-02-01 · 04.08.2025



©2025 Landscape Structures. All Rights Reserved.



Super NetPlex Inclusive Tower

Qunatis M.2 Inclusive Net Play Structure

We-Go-Swing  
Wheelchair Accessible  
Swing

We-Go-Spin  
Wheelchair Accessible  
Spinner

Shaded Seating

Inclusive Swings

Group/Multi-User Swings

Weesaw - Inclusive Seesaw

Cozy Dome

Ramped Inclusive  
Play Structure

Shaded Seating

Chill Spinners



## Stow Grove Park Inclusive Playground

1184542-03-02-07 • 04.08.2025



©2025 Landscape Structures. All Rights Reserved.

IT IS THE MANUFACTURERS OPINION THAT  
THIS PLAY AREA DOES CONFORM TO  
THE A.D.A. ACCESSIBILITY STANDARDS.  
ASSUMING AN ACCESSIBLE PROTECTIVE  
SURFACING IS PROVIDED, AS INDICATED, OR  
WITHIN THE ENTIRE USE ZONE.

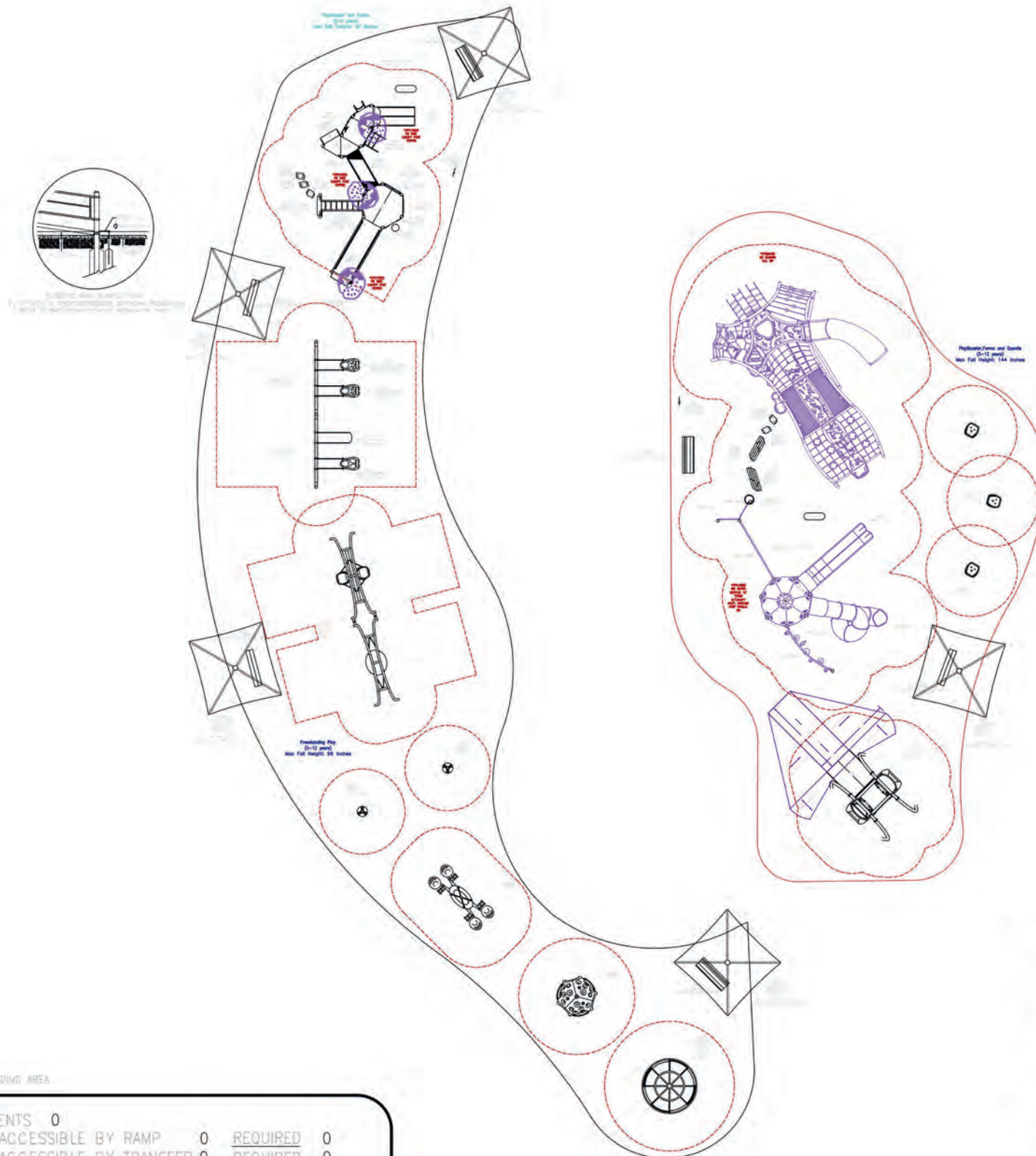
THIS CONCEPTUAL PLAN WAS BASED ON INFORMATION AVAILABLE TO US. PRIOR TO CONSTRUCTION, DETAILED SITE INFORMATION INCLUDING SITE DIMENSIONS, TOPOGRAPHY, EXISTING UTILITIES, SOIL CONDITIONS, AND DRAINAGE SOLUTIONS SHOULD BE OBTAINED, EVALUATED, & LISTED IN THE FINAL DESIGN. PLEASE VERIFY ALL DIMENSIONS OF PUMP AREA, SIZE, ORIENTATION, AND LOCATION OF ALL EXISTING UTILITIES, EQUIPMENT, AND SITE FINISHES PRIOR TO ORDERING. SLOPES SHOULD NOT EXCEED THE AFTER DRAINAGE RUN.

CHOOSE A PROTECTIVE SURFACING MATERIAL THAT HAS A CRACKING HEIGHT VALUE TO MEET THE MAXIMUM FALL HEIGHT FOR THE EQUIPMENT (REF. ASTM F1487 STANDARD CONSUMER SAFETY PERFORMANCE SPECIFICATION FOR PLAYGROUND EQUIPMENT FOR PUBLIC USE). SECTION C CURRENT REVISIONS: THE SUBSURFACE MUST BE WELL DRAINAGE IF THE SOIL DOES NOT DRAIN NATURALLY. IT MUST BE TIERED OR SLOPED 1/8" TO 1/4" PER FOOT TO A STORM SEWER OR TO "FINCH DRAIN".

IT IS THE MANUFACTURER'S OPINION AND INTENT THAT THE LAYOUT OF THESE COMPONENTS CONFORM WITH THE U.S. CONSUMER PRODUCT SAFETY COMMISSION'S (CPSC) "HANDBOOK FOR PUBLIC PLAYGROUND SAFETY".

COPYRIGHT 4/7/25  
LANDSCAPE STRUCTURES INC.  
801 7th STREET SOUTH  
EAGAN, MINNESOTA 55328  
TEL: 888-448-8874  
plyas.com

2/12/25	1184542-03-01	JAG
Date	Previous Drawing #	Initials



SWINGS AND FREESTANDING AREA

TOTAL ELEVATED PLAY COMPONENTS	0		
TOTAL ELEVATED COMPONENTS ACCESSIBLE BY RAMP	0	REQUIRED	0
TOTAL ELEVATED COMPONENTS ACCESSIBLE BY TRANSFER	0	REQUIRED	0
TOTAL ACCESSIBLE GROUND LEVEL COMPONENTS SHOWN	9	REQUIRED	0
TOTAL DIFFERENT TYPES OF GROUND LEVEL COMPONENTS	4	REQUIRED	4

TOTAL ELEVATED PLAY COMPONENTS	9		
TOTAL ELEVATED COMPONENTS ACCESSIBLE BY RAMP	5	REQUIRED	5
TOTAL ELEVATED COMPONENTS ACCESSIBLE BY TRANSFER	4	REQUIRED	0
TOTAL ACCESSIBLE GROUND LEVEL COMPONENTS SHOWN	3	REQUIRED	0
TOTAL DIFFERENT TYPES OF GROUND LEVEL COMPONENTS	2	REQUIRED	2

SUPER NETPLEX AREA

TOTAL ELEVATED PLAY COMPONENTS	5		
TOTAL ELEVATED COMPONENTS ACCESSIBLE BY RAMP	0	REQUIRED	0
TOTAL ELEVATED COMPONENTS ACCESSIBLE BY TRANSFER	4	REQUIRED	3
TOTAL ACCESSIBLE GROUND LEVEL COMPONENTS SHOWN	12	REQUIRED	2
TOTAL DIFFERENT TYPES OF GROUND LEVEL COMPONENTS	5	REQUIRED	5



Stow Grove Park  
Inclusive Playground  
Goleta, CA

RecWest Outdoor  
Products, Inc.  
Nathaniel Stutz

SYSTEM TYPE:  
PlayBooster

DRAWING #:  
1184542-03-02



## **ATTACHMENT 3**

### Restroom Options

# Restroom Options (Public Restroom Company) 3/21/2025

It is highly recommended that the maintenance walk be at the back of the building, and confirmed there's no access issues for equipment- anything that will fit in the door will be fine on a 4ft wide path- Don't need anything more than a toolbox. A gate could be added to the maintenance yard for access.

Or otherwise for a front access they recommend moving the drinking fountains to a pedestal off to the side) and using that location.

adding a second front access around the drinking fountain will make the building unnecessarily larger and more expensive.

