



## **GOLETA TRAIN DEPOT**

### **SITE PLAN AND BUILDING ADVISORY REVIEW**

Presentation #3 to Design Review Board, July 13, 2021

Department of Neighborhood Services and Public Safety

# THEME DEVELOPMENT



- RFP Architectural Character – Create a “Gateway” to the City
- PRELIMINARY DESIGN: Team studied a variety of themes inspired by Goleta Valley
- SELECTED OPTIONS: Three Concepts (Schooner, Traditional, and Sunrise)
- CITY COUNCIL 3/3/20: Majority liked Schooner. A few liked Sunrise. One preferred Traditional.
- COMMUNITY OUTREACH SURVEY 6/3/20: Traditional 52% / Sunrise 27% / Schooner 21%
- CITY COUNCIL 8/5/20: Selected “Traditional Design with Modern Elements”  
Council Comment: “I like the design elements,” “I like the fact you (project designers) have taken something traditional, but added a more modern, contemporary feel to it.” (Published in *Noozhawk*)
- CITY COUNCIL 10/20/20: Presented refined Traditional Design with Modern Elements

Inspiration and not replication.

- DRB PRESENTATION 2/4/21: Historic influence and not replication.

- “Omit or Reduce and Relocate Tower”
- “Match Historic Depot Colors”
- “Reduce Structural Armature”



- DRB PRESENTATION 4/27/21:

- Eliminate small raised roof at Central portion
- Suggested gable roof at main entrance
- Eliminate roof cut-outs at ends of Depot
- Continue darker trim around windows and corners
- Modify fenestration to match traditional
- Use Agrarian Plaza landscape

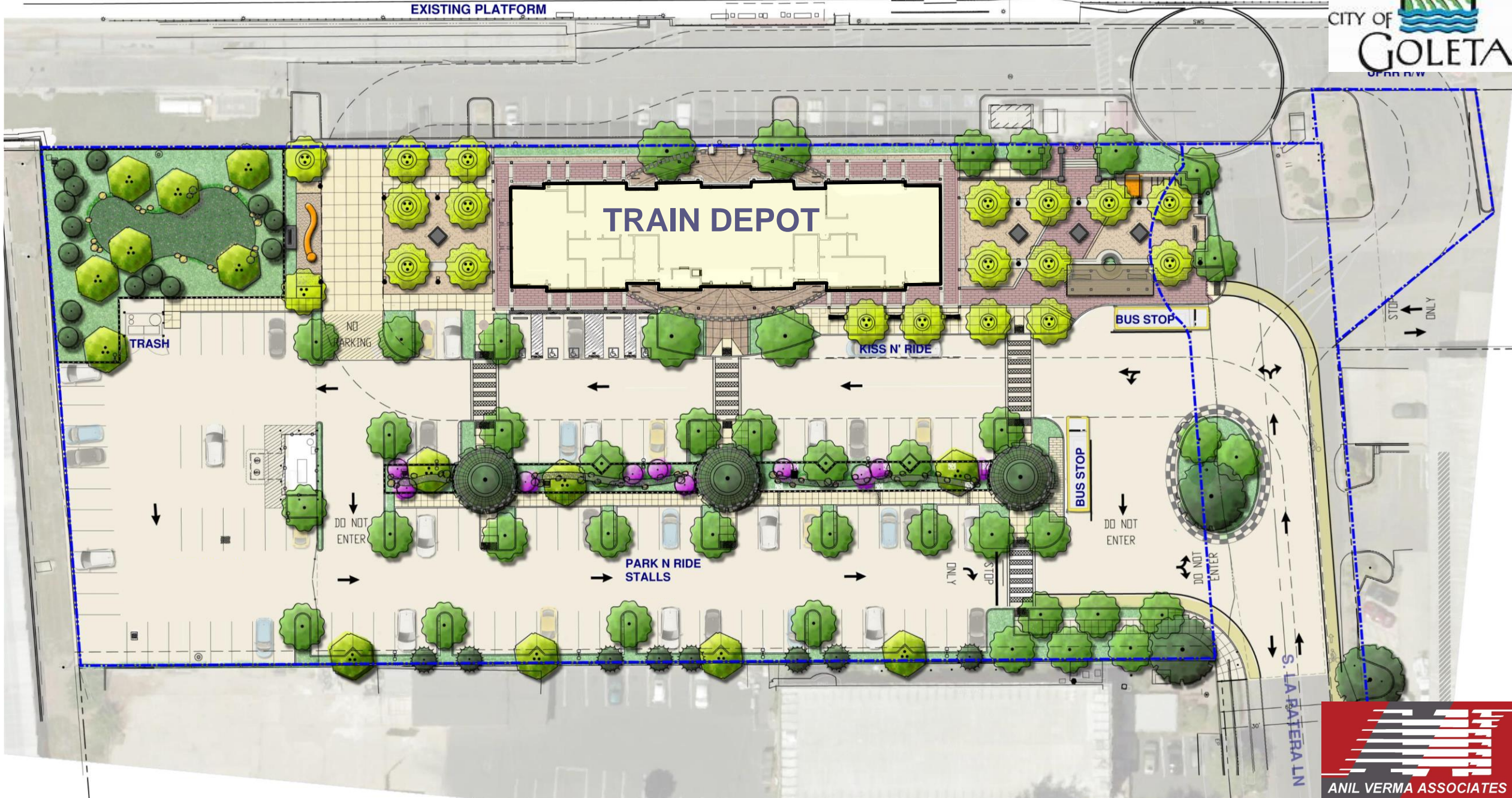


# Existing Site Plan



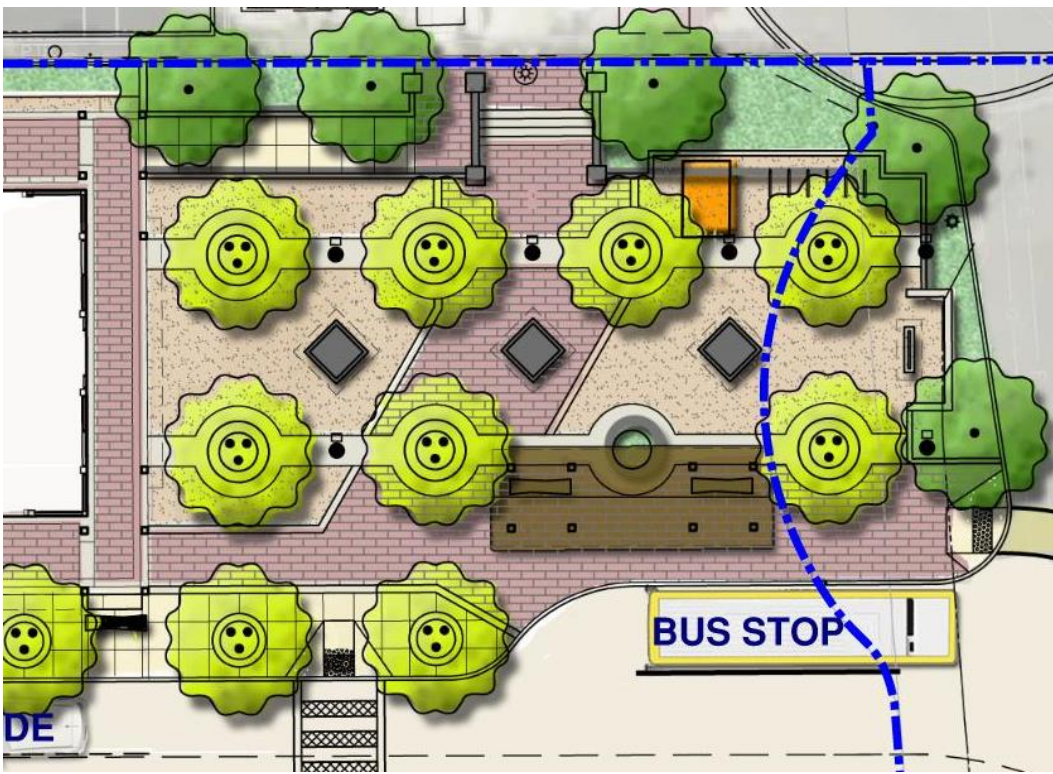


# Proposed Site Plan





# Plaza and Amenities

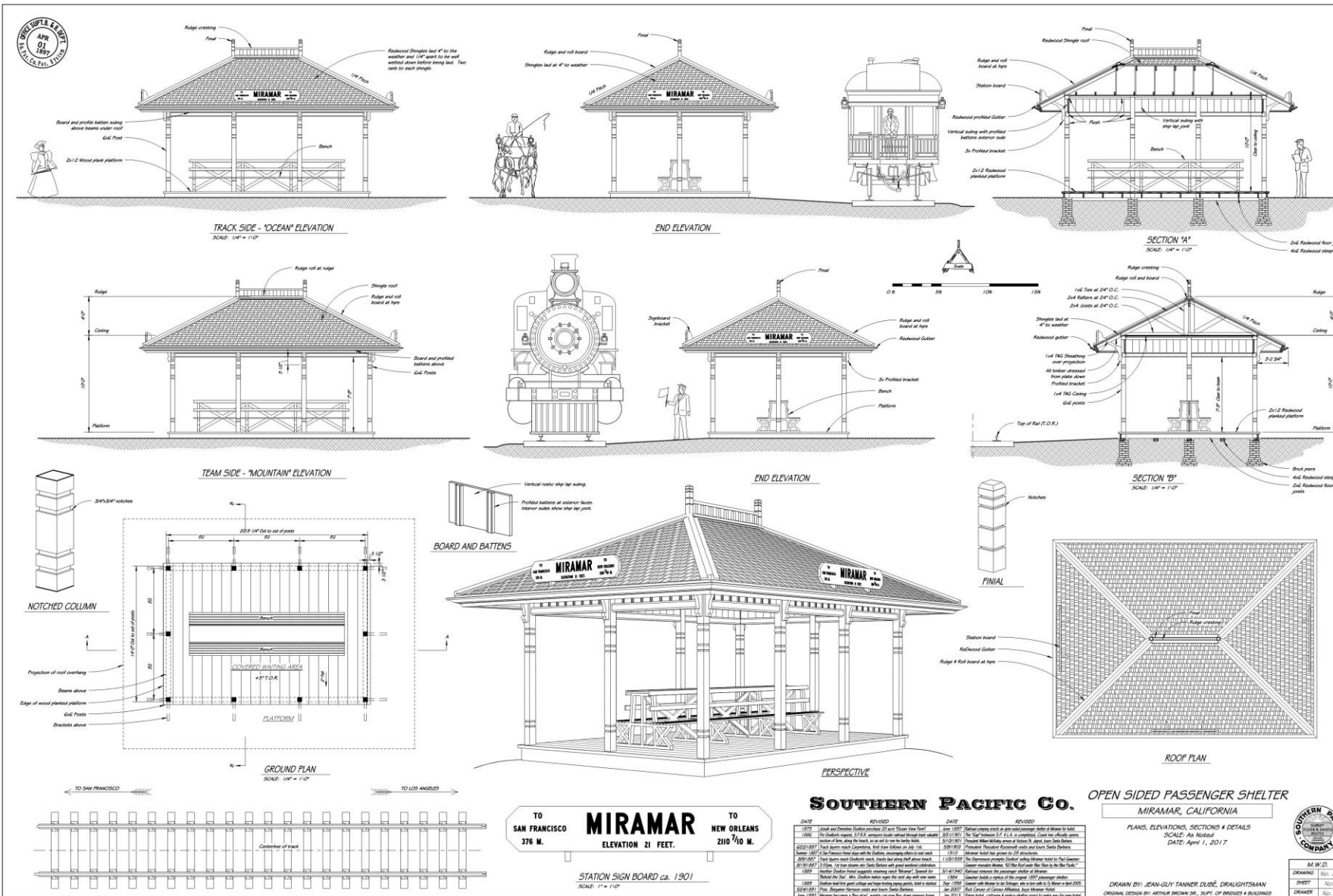


Avocado, Olive or  
Citrus Tree

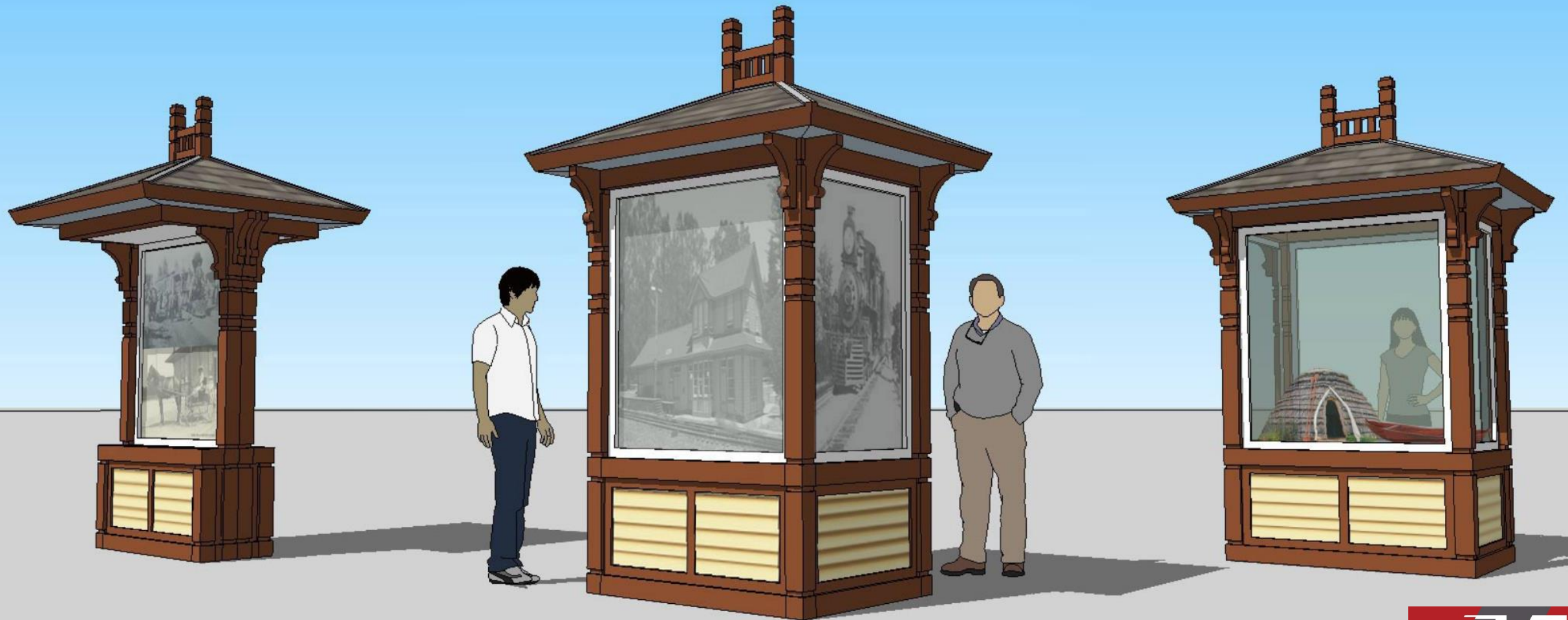




# Display Kiosks

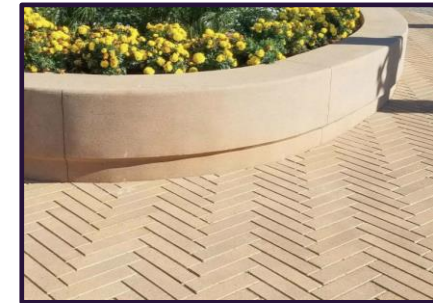
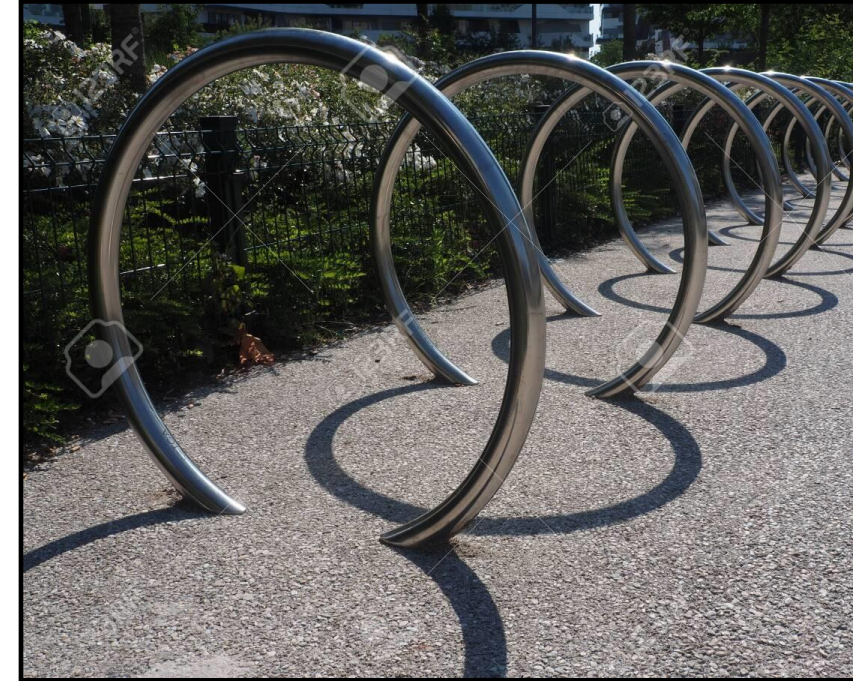


# Display Kiosks





# Hardscape Patterns and Amenities Examples







# Parking Lot Tree Options



- Other Native trees to Goleta
- Black Walnut
  - Elderberry
  - Cottonwood
  - Box Elder
  - Monterey Pine
  - Hollyleaf Cherry
  - Sandbar Willow
  - Monterey Cypress



Coast Live Oak



Western Redbud



California Sycamore



American Pepper



African Sumac  
(Rhus lancea)



Elm  
(Ulmus parvifolia)



Tipu Tree  
(Tipuana tipu)



Brisbane Box  
(Lophostemon c.)





# Architectural History of Goleta Valley



**Sexton House**



**Historic Goleta Depot**



**Hill House**



**Stow House**



**Goleta's Community Center**



# Architectural History of the California Depot





# Previous Scheme '2/4/2021' DRB'



Reduce height of  
tower / relocate

Match Historic  
Depot colors

Simplify  
Structure





# Previous Revised Scheme '4/27/2021' DRB'



Reduce height of  
tower / relocate

Match Historic  
Depot colors

Simplify  
Structure





# Revised Scheme



Presented to DRB April 27

Eliminate small raised roof

Gable roof at main entrance

Eliminate roof cut outs at each end

Omit tower

Reflect historic trim patterns

Less modern fenestration

## Revised Scheme





# Revised Scheme





# Revised Scheme – North & South Elevations



South Elevation



North Elevation





# East and West Elevations



Presented to DRB April 27



Revised Scheme A







Thank you!

