

SCALE: 1" = 200'-0"

**SANDPIPER GOLF CLUB TREE PRESERVATION OVERALL PLAN -SEE BLOW UP SECTIONS**

The landscape architect and his consultants do not warrant or guarantee the accuracy and completeness of the work product herein beyond a reasonable diligence. If any mistakes, omissions, or discrepancies are found to exist within the work product, the landscape architect shall be promptly notified so that he may have the opportunity to take whatever steps necessary to resolve them. Failure to promptly notify the landscape architect of such conditions shall absolve the landscape architect from any responsibility for the consequences of such discrepancies. Actions without the knowledge and consent of the landscape architect or in contradiction to the landscape architect's work product or recommendations shall become the responsibility not of the landscape architect but of the parties responsible taken such action. This plan and design are the exclusive property of Earthform Design and cannot be used or reproduced without the landscape architect's written consent.



**PROGRESS PRINT  
NOT FOR CONSTRUCTION**

**SANDPIPER GOLF CLUB  
7925 HOLLISTER AVE.  
GOLETA, CA. 93117**

Date: 05/15/25  
Scale: 1" = 200'-0"  
Drawn: N.T.  
Job: SANDPIPER  
Print Date:  
Sheet: LT-1  
Of: 3

**SANDPIPER GOLF CLUB TREE  
PRESERVATION OVERALL PLAN**

**EARTHFORM**  
DESIGN  
LANDSCAPE ARCHITECTURE-LAND PLANNING-URBAN DESIGN  
1227 DE LA VINA ST. SANTA BARBARA, CALIFORNIA 93101  
TEL: (805) 963-2006 FAX: (805) 963-5535

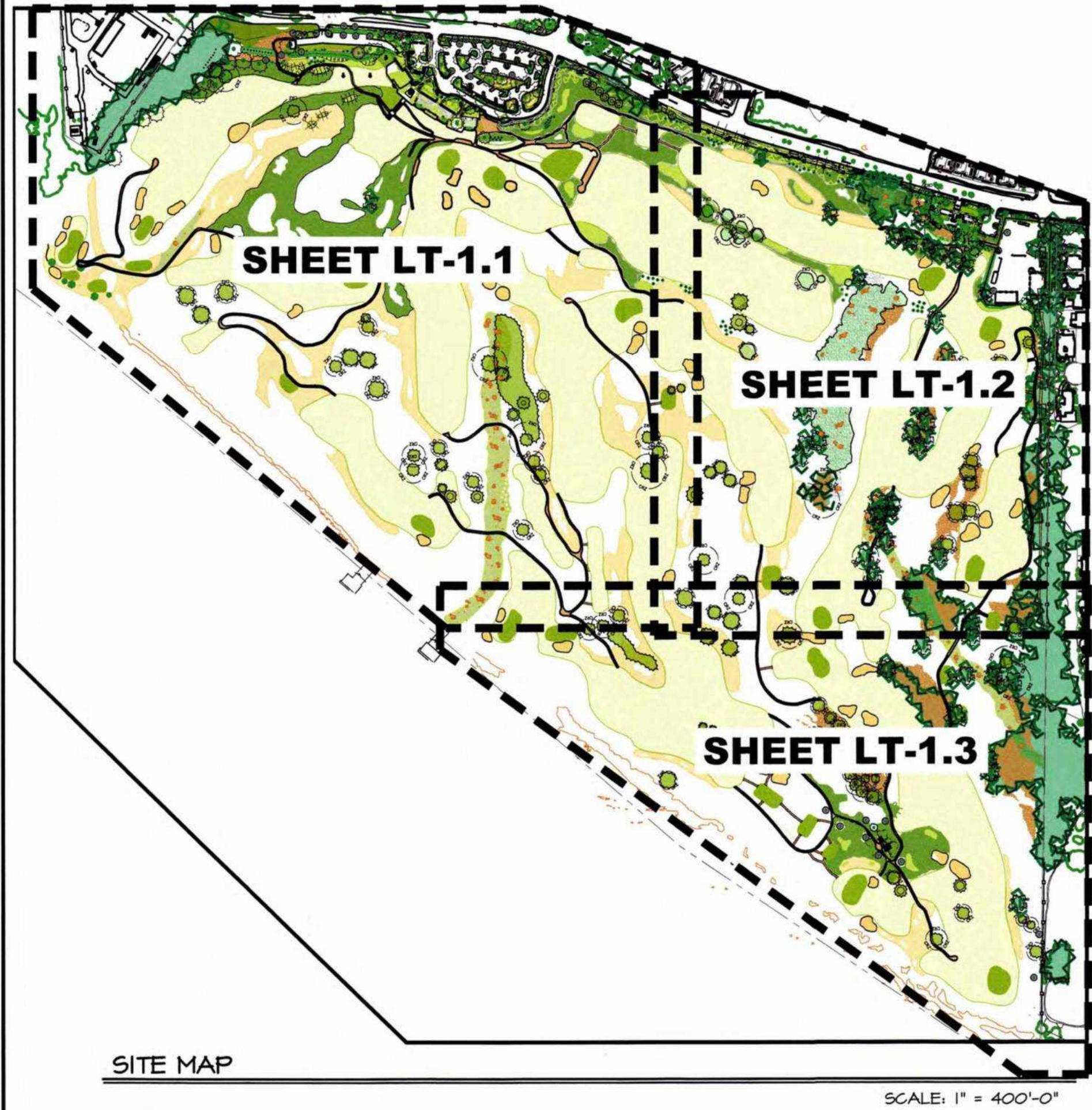
REVISIONS BY

1	N.T.	05-15-25
2	N.T.	05-15-25









**SANDPIPER GOLF CLUB TREE PRESERVATION PLAN -NE SECTION**



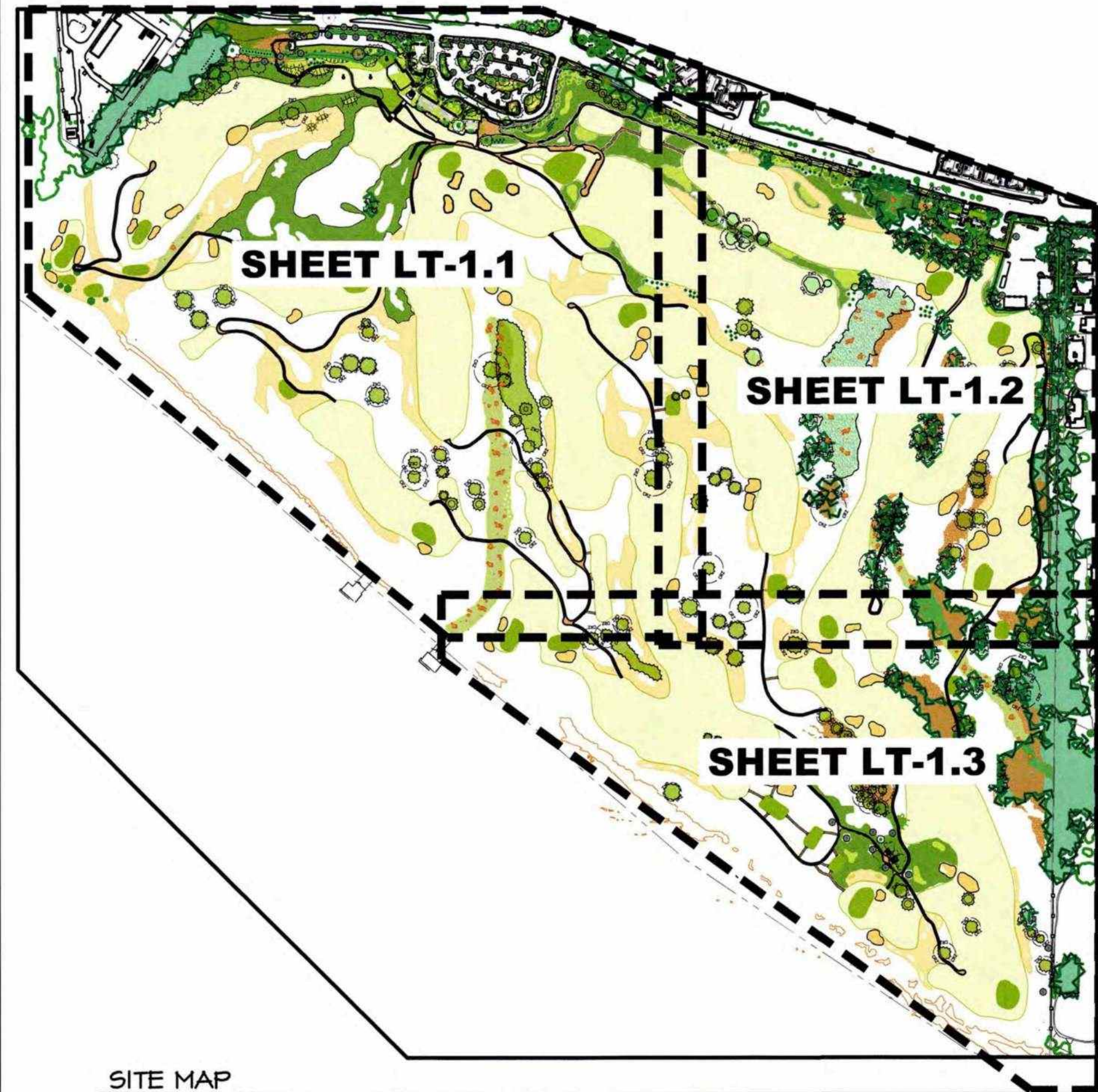
SCALE: 1" = 100'-0"

LEGEND	
	EXISTING CYPRESS
	EXISTING EUCALYPTUS TO REMAIN
	EXISTING TREES TO REMAIN
	EXISTING TREES TO BE REMOVED
	TREE DRIPLINE / C.R.Z.
	TEE BOXES
	CART PATHS
	MULCH
	SAND TRAP
	SAND WASTE AREA
	RIPARIAN WATER COURSES
	ESH BOUNDARY



**PROGRESS PRINT  
NOT FOR CONSTRUCTION**

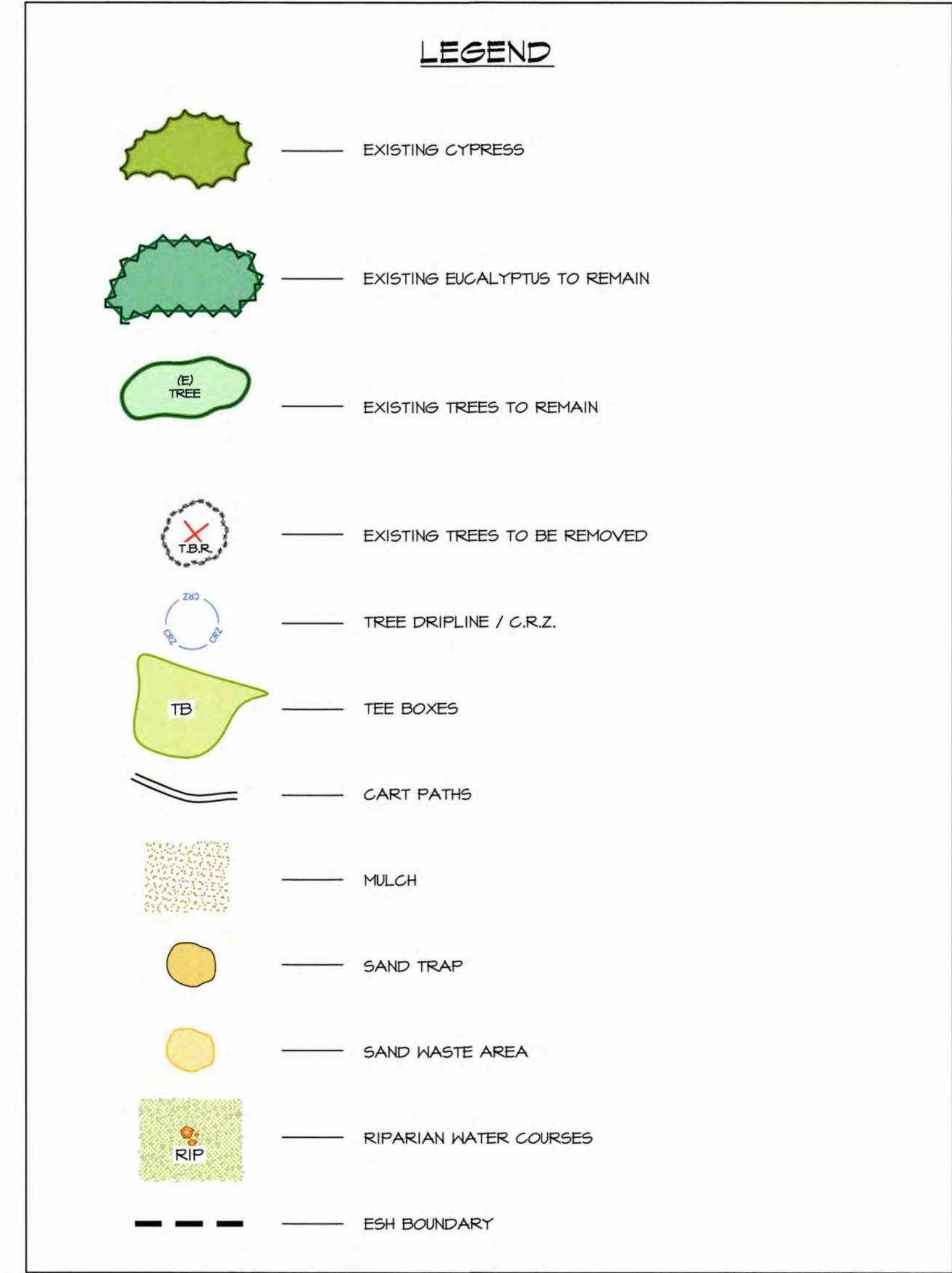




SITE MAP

SCALE: 1" = 400'-0"

## SANDPIPER GOLF CLUB TREE PRESERVATION PLAN -SE SECTION



SCALE: 1" = 100'-0"

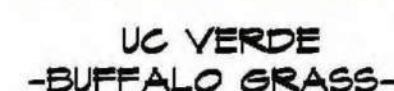
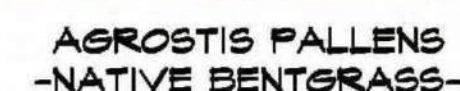
The landscape architect and his consultants do not warrant or guarantee the accuracy and completeness of the work product herein beyond a reasonable diligence. If any mistakes, omissions, or discrepancies are found to exist within the work product, the landscape architect shall be promptly notified so that he may have the opportunity to take whatever steps necessary to resolve them. Failure to promptly notify the landscape architect of such conditions shall absolve the landscape architect from any responsibility for the consequences of such discrepancies. Actions without the knowledge and consent of the landscape architect or in contradiction to the landscape architect's work product or recommendations shall become the responsibility not of the landscape architect but of the parties responsible taken such action. This plan and design are the exclusive property of Earthform Design and cannot be used or reproduced without the landscape architect's written consent.

REVISIONS	BY
Revised plant list & plan to replace Millwood w. Purple Sage per Biologist rec. See sheet #s: L-01, L-1, L-13, L-14, L-16, L-17, L-18, L-19, L-112, L-113, L-114	N.T. T-1-25
Revised plant list & plan for ISHA restoration See sheet L-03	N.T. 11-6-25



SEE REPORT FROM ARBORIST TITLED:  
COURSE GRADING & RECONFIGURATION FOR  
MORE DETAIL ON TREES THAT MAY HAVE  
IMPACTS BUT ARE NOT SLATED FOR REMOVAL.



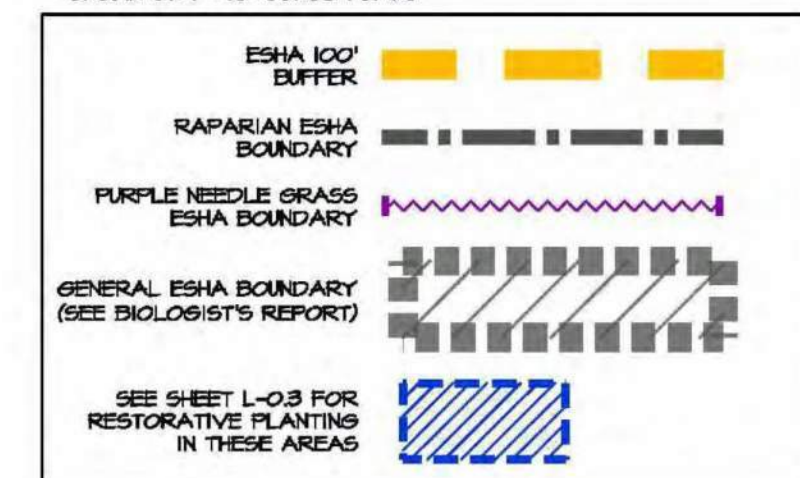


### CLUB HOUSE ROOF GRASSES

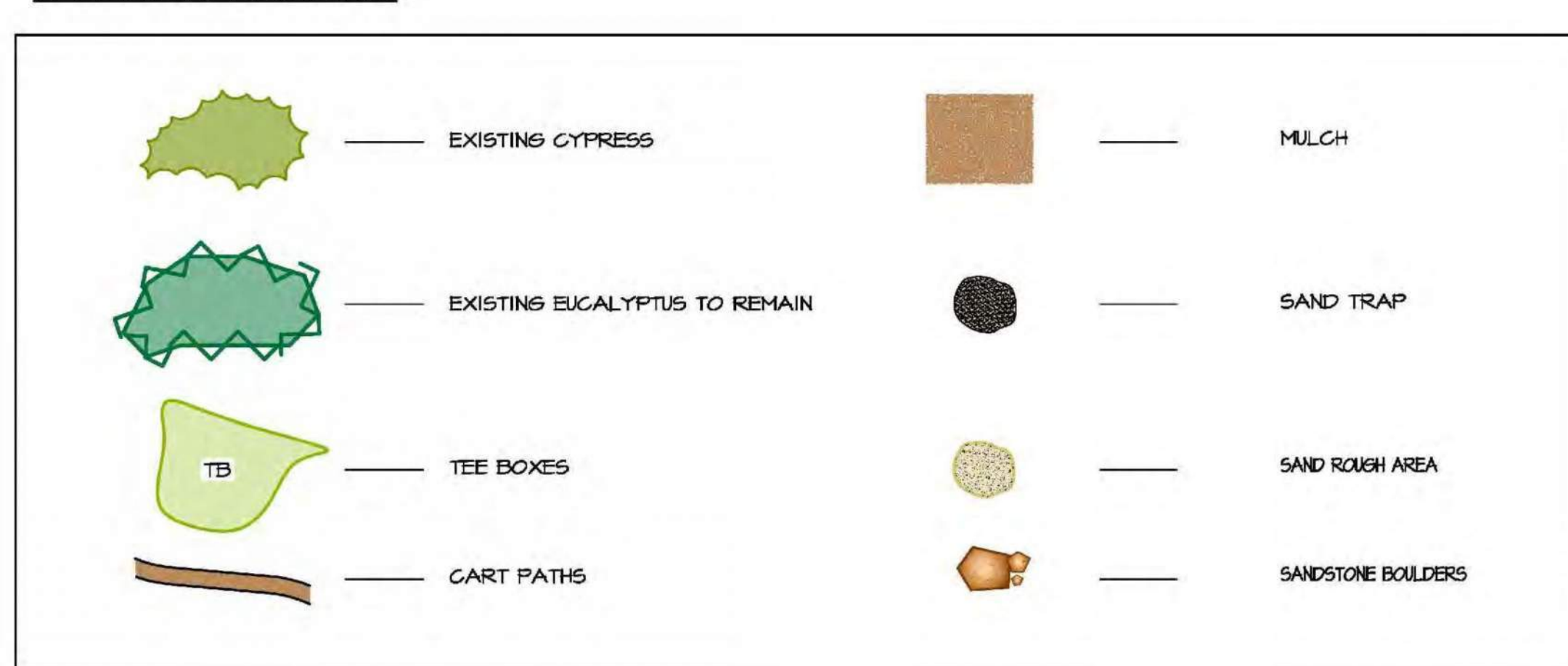
## GOLF COURSE GRASSES

ESHA BOUNDARY LEGEND

-SHOWN ON 1"=40' SCALE PLANS

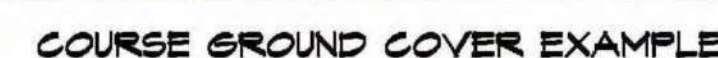
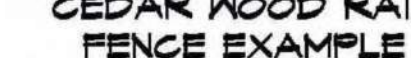


### SYMBOL LEGEND



## GOLF COURSE PLANT LIST

Qty.	Code	Size	Angle	Botanical Name	Common Name	Notes
				PLANT FACTORS		
<b>TREES:</b>						
	10 HES MAG	48"-60"	M	HESPEROCYPARIS MACROCARPA	MONTEREY CYPRESS-to be confirmed-DRIP by DONK BOLF	
	10 MET EXC	36"-48"	L	METROSIDEROS EXCELSA	NEW ZEALAND CHRISTMAS TREE	-DRIP
	TBD, QUE AGR TBD, QUE TOM	48"-72" 48"-60"	L	QUERCUS AGRIFOLIA QUERCUS TOMENTELLA	COAST LIVE OAK ISLAND OAK	-DRIP 4" for mitigation -DRIP
<b>GROUND COVER:</b>						
	10/PAT BOU GRA	16	L	BOUETOLOIA GRACILIS	BLUE GRAMA	-2-3 lbs. per acre-SPRAY
	HAR FES	16	L	HARD FESCUE	HARD FESCUE	-SPRAY
	FES OVI	16	L	FESTUCA OVINA	SHEEPS FESCUE	-SPRAY
	200/PAS SF, PAS PAL	16	L	PASPALUM PLATINUM	SEA SHORE PASPALUM	-SPRAY (railways)
	1-15 mil. UC VER	16	L	UC VERDE	BUFFALOGRASS	-40-80 lbs. per acre-SPRAY -1 per ft. or plugs #12 (seed 2-3 lbs. per 1000 sq.ft.)
<b>OTHER GRASSES:</b>						
	AGR PAL	16	L	AGROSTIS PALLENS	NATIVE BENT GRASS	-DRIP / SPRAY
	43/45 CAR PRA	16	M	CAREX PRAEGRACILIS	CALIFORNIA FIELD SEDGE	-DRIP / SPRAY
	LOM PLA	1-56	L	LOMANDRA "PLATINUM BEAUTY"	PLATINUM BEAUTY LOMANDRA	-DRIP
	MIS MOR	56	M	MISCANTHUS SINENSIS "MORNING LIGHT"	EULALIA GRASS	-DRIP
	MUH DUB	1-56	L	MUHLENBERGIA DUBIA	PINE MUHLY	-2+ o.c. -DRIP
	23/224 PEN SPA	1-56	L	PENNISETUM SPATHIOLATUM	SLINDER VELDT GRASS-2+ o.c.	-DRIP / SPRAY or as shown
	ARI PUR	1-56	VL	ARISTIDA PURPUREA	PURPLE THREE-AWN	-DRIP / SPRAY
	SES AUT	16	M	SESLERIA AUTUMNALIS	AUTUMN MOOR GRASS	-DRIP
	STI PUL	16	L	STIPA PULCHRA	PURPLE NEEDLE GRASS -3' o.c.	-DRIP / SPRAY
<b>LOW SHRUBS:</b>						
	4350 BAC PIL	1-56	L	BACCHARIS PILULARIS "PIGEON POINT" DWARF COYOTE BRUSH		-DRIP -3'o.c.
	666 ARC PAC	1-56	L	ARCTOSTAPHYLOS "PACIFIC MIST" MANZANITA		-DRIP -3'o.c.
				option- "EMERALD CARPET" - "INSULARIS" CANYON SPARKLES - "ISLAND MANZANITA"		
	ARC EDM	56	L	ARCTOSTAPHYLOS EDMUNDII CVS	MANZANITA CARMEL SUR	-DRIP -5'o.c.
<b>SHRUBS:</b>						
	ACA COS	56	L	ACACIA COGNATA "COUSIN IT"	RIVER WATTLE	-DRIP
	754 ARC HOW	56	L	ARCTOSTAPHYLOS "HOWARD McMINN"	MANZANITA VAR.	-DRIP
	BAC SPE	56	L	BACCHARIS SPECIES		-DRIP -3'o.c.
	4/71 CAR TUT	56	L	CARRISSA "TUTTLE"		-DRIP -4'o.c.
	CIS SUN	56	L	CISTUS "SUNSET"	ROCKROSE	-DRIP -6'o.c.
	COR AUS	56	L	CORDYLINA AUSTRALIS "TORBAY DAZZLER"		-DRIP
	42 HET ARB	156	VL	HETEROMELES ARBUTIFOLIA	TOYON	-DRIP
	524 LAU NOB	56	L	LAURUS NOBILIS "SARATOGA"	SWEET BAY LAUREL -screen hedge	-DRIP -5'o.c.
				option- METROSIDEROS EXCELSA "SPRING FIRE" PRUNUS LYONI PYROSTEGIA VENUSTA	NEW ZEALAND CHRISTMAS TREE CATALINA CHERRY FLAME VINE	
	LON SUB	56	L	LONICERA SUBCIGATA	CHAPARRAL HONEYSUCKLE	-DRIP
	MUH CAP	56	L	MUHLENBERGIA CAPILLARIS	HAIRY AWW MUHLY	-DRIP
	16/25 SAL LEU	56	L	SALVIA LEUCOPHYLLA	PURPLE SAGE	-DRIP
<b>COASTAL EDGE:</b>						
	20/200 ATR LEN	1-56	VL	ATRIPLEX LENTIFORMIS "BRENER"	QUAILBUSH	-DRIP -6'o.c.
	ESC CAL	56	VL	ESCHSCHOLZIA CALIFORNICA	CALIFORNIA POPPY	-BROADCAST
	RHU INT	56	VL	RHUS INTERSIFOLIA	LEMONADE BERRY	-DRIP -5'o.c.
	SAL MEL	56	VL	SALVIA MELLIFERA	BLACK SAGE	-DRIP -6'o.c.
	STI PUL	16 plugs	VL	STIPA PULCHRA	PURPLE NEEDLEGRASS	-DRIP / SPRAY



SANDPIPER GOLF CLUB OVERALL SITE PRELIMINARY LANDSCAPE PLAN



SCALE: 1" = 200'-0"

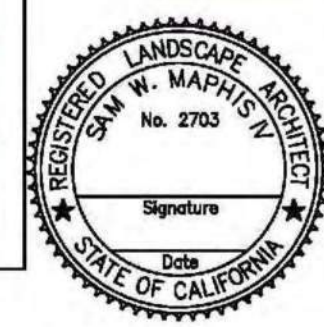
The landscape architect and his consultants do not warrant or guarantee the accuracy and completeness of the work product herein beyond a reasonable diligence. If any mistakes, omissions, or discrepancies are found to exist within the work product, the landscape architect shall be promptly notified so that he may have the opportunity to take whatever steps necessary to resolve them. Failure to promptly notify the landscape architect of such conditions shall absolve the landscape architect from any responsibility for the consequences of such discrepancies. Actions without the knowledge and consent of the landscape architect or in contradiction to the landscape architects work product or recommendations shall become the responsibility not of the landscape architect but of the parties responsible taken such action. This plan and design are the exclusive property of Earthenform Design and cannot be used or reproduced without the landscape architects written consent.

**EARTHFORM**  
DESIGN  
LANDSCAPE ARCHITECTURE • LAND PLANNING • URBAN DESIGN  
12827 DE LA VINA ST. SANTA BARBARA, CALIFORNIA 93101  
TEL: (805) 963-2006 • FAX: (805) 963-8335

# SANDPIPER GOLF CLUB OVERALL SITE PRELIMINARY LANDSCAPE PLAN

**SANDPIPER GOLF CLUB**  
**7925 HOLLISTER AVE.**  
**GOLETA, CA. 93117**

Date 05/15/25  
 Scale 1"=200'-0  
 Drawn: N.T.  
 Job SANDPIPER  
 Print Date \_\_\_\_\_  
 Sheet 1-0.  
 of \_\_\_\_\_ Sheets







NOTES

1. REFER TO CIVIL DRAWINGS FOR PROPOSED GRADING PLANS.
2. REFER TO LANDSCAPE DRAWINGS FOR PROPOSED TREES AND LANDSCAPE.
3. REFER TO CIVIL DRAWINGS FOR PROPOSED HOLLISTER / CATHEDRAL OAKS TRAFFIC INFORMATION AND ADJUSTMENTS.
4. REFER TO LANDSCAPE DRAWING FOR PROPOSED GOLF ROUTING PLANS.
5. REFER TO CIVIL DRAWINGS FOR PROPOSED UTILITIES.
6. REFER TO LANDSCAPE DRAWINGS FOR LIGHTING DESIGN AND SPECIFICATIONS - U.N.O.

LEGEND

- AREA OF WORK
- EXISTING ROUTING PLAN
- PROPOSED ROUTING PLAN

CLUB HOUSE  
REFER TO SHEET A\_SP-091

BARNSDALL / MAINTENANCE  
REFER TO SHEET A\_SP-093

COMFORT STATION  
REFER TO SHEET A\_SP-092

1 EXISTING / PROPOSED GOLF ROUTING PLANS OVERLAY

PROJECT 14  
SCALE: 1" = 150'-0"

The landscape architect and his consultants do not warrant or guarantee the accuracy and completeness of the work product herein beyond a reasonable diligence. If any mistakes, omissions, or discrepancies are found to exist within the work product, the landscape architect shall be promptly notified so that he may have the opportunity to take whatever steps necessary to resolve them. Failure to promptly notify the landscape architect of such conditions shall absolve the landscape architect from any responsibility for the consequences of such discrepancies. Actions without the knowledge and consent of the landscape architect or in contradiction to the landscape architect's work product or recommendations shall become the responsibility not of the landscape architect but of the parties responsible taken such action. This plan and design are the exclusive property of Earthform Design and cannot be used or reproduced without the landscape architect's written consent.



REVISIONS BY

N.T.	10-29
N.T.	11-29


**EARTHFORM**  
DESIGN  
LANDSCAPE ARCHITECTURE • LAND PLANNING • URBAN DESIGN  
1827 DELA VINA ST. SANTA BARBARA, CALIFORNIA 93101  
TEL: (805) 965-5006 • FAX: (805) 965-5555

EXISTING / PROPOSED GOLF  
ROUTING PLANS OVERLAY

SANDPIPER GOLF CLUB  
7925 HOLLISTER AVE.  
SANTA BARBARA, CA. 93117

Date: 05/15/25  
Scale: 1" = 150'-0"  
Drawn: -  
Job: -  
Print Date: -  
Sheet: L-0.2  
Of: 2 Sheets





NORTH

PROGRESS PRINT  
NOT FOR CONSTRUCTION







**ESHA BOUNDARY LEGEND**  
- SHOWN ON 1"=40' SCALE PLANS

- ESHA 100' BUFFER
- RAPARIAN ESHA BOUNDARY
- PURPLE NEEDLE GRASS ESHA BOUNDARY
- GENERAL ESHA BOUNDARY (SEE BIOLOGIST'S REPORT)
- SEE SHEET L-03 FOR RESTORATIVE PLANTING IN THESE AREAS

**LEGEND**

- EXISTING CYPRESS
- EXISTING EUCALYPTUS TO REMAIN
- TB
- CART PATHS
- PROPOSED NEW HESPEROCYPARIS MACROCARPA TREES ON SHEET L-1.1
- MULCH
- SAND TRAP
- SAND ROUGH AREA
- SANDSTONE BOLDERS

**PRELIMINARY LANDSCAPE LAYOUT PLAN**

The landscape architect and his consultants do not warrant or guarantee the accuracy and completeness of the work product herein beyond a reasonable diligence. If any mistakes, omissions, or discrepancies are found to exist within the work product, the landscape architect shall be promptly notified so that he may have the opportunity to take whatever steps necessary to resolve them. Failure to promptly notify the landscape architect of such conditions shall absolve the landscape architect from any responsibility for the consequences of such discrepancies. Actions without the knowledge and consent of the landscape architect or in contradiction to the landscape architect's work product or recommendations shall become the responsibility not of the landscape architect but of the parties responsible taken such action. This plan and design are the exclusive property of Earthform Design and cannot be used or reproduced without the landscape architect's written consent.

REVISIONS		BY

**EARTHFORM**  
DESIGN  
LANDSCAPE ARCHITECTURE - LAND PLANNING - URBAN DESIGN  
TEL: (805) 983-2008 FAX: (805) 983-8335

**PRELIMINARY LANDSCAPE LAYOUT PLAN**

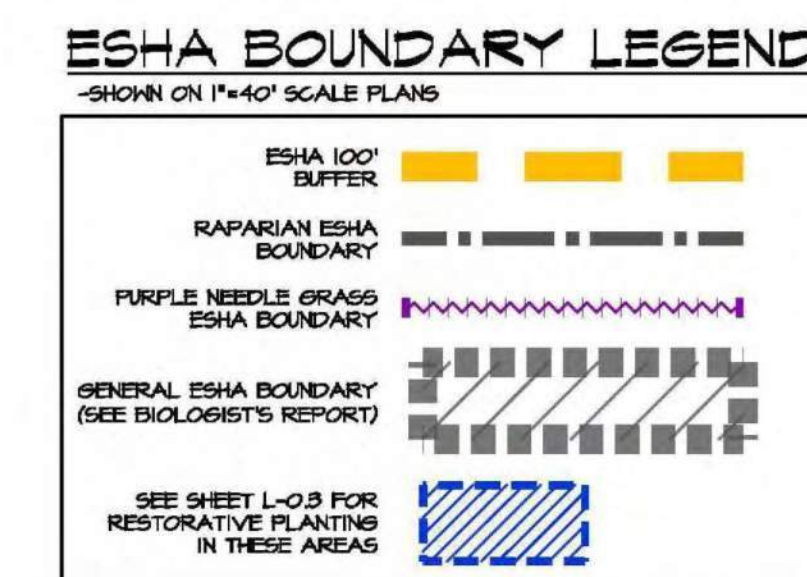
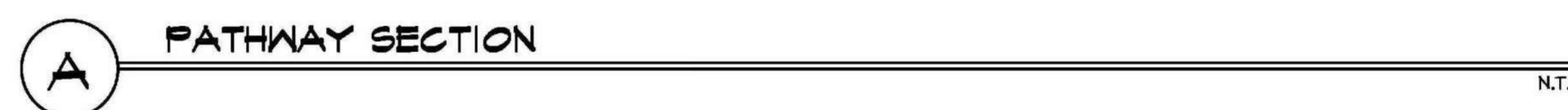
**SANDPIPER GOLF CLUB**  
7925 HOLLISTER AVE.  
SANTA BARBARA, CA. 93117

**PROGRESS PRINT**  
NOT FOR CONSTRUCTION

Date: 05/15/25  
Scale: 1" = 40'-0"  
Drawn: XX  
Job: SANDPIPER  
Print Date:    
Sheet: L-1.1  
Of:  

LANDSCAPE ARCHITECT  
No. 2703  
STATE OF CALIFORNIA  
Signature:





**SHEET L-1.5**

NORTH

SCALE: 1" = 40'-0"

PROGRESS PRINT  
NOT FOR CONSTRUCTION



**EARTHFORM**  
DESIGN

LANDSCAPE ARCHITECTURE • LAND PLANNING • URBAN DESIGN  
1527 DE LA VINA ST. SANTA BARBARA, CALIFORNIA 93101  
TEL: (805) 963-2006 • FAX: (805) 963-8336

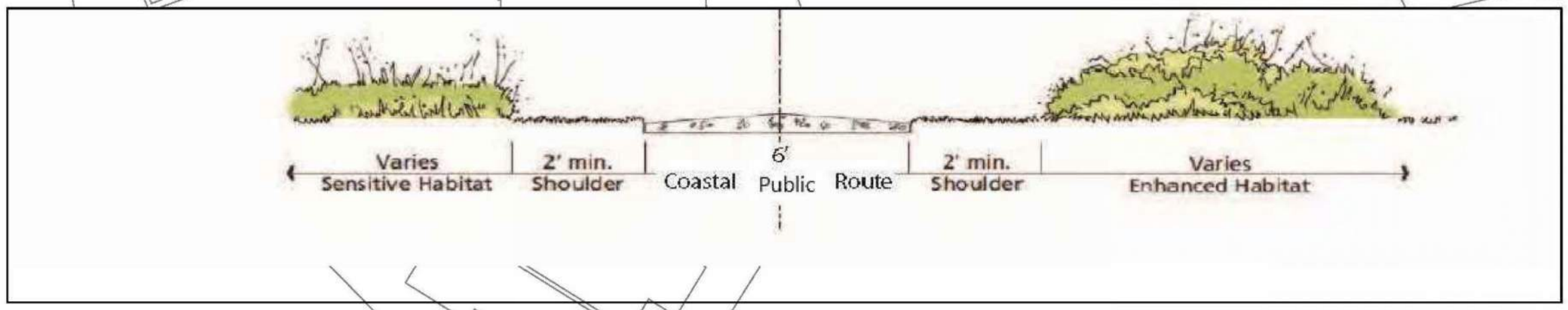
# PRELIMINARY LANDSCAPE LAYOUT PLAN

SANDPIPER GOLF CLUB  
7925 HOLLISTER AVE.  
SANTA BARBARA, CA. 93117

Date	05/15/25
Scale	1" = 40' - 0"
Drawn	XX
Job	SANDPIPER
Print Date	
Sheet	L-1.2
Of	Sheets

REVISONS	BY
Revised plant list & plan to replace Millbrook w. Purple Sage per Biologist req. See sheet: Ms. L-01, L-1, L-13, L-14, L-16, L-17, L-18, L-19, L-12, L-13, L-14	N.T. 7-7-25
Updated tree survey along Hollister Ave.	N.T. 4-24-25
Revised plant list & plan for ESHA restoration. See sheet: L-05	N.T. 1-6-25
Updated ESHA areas and planting per Biologist recommendations	N.T. 1-4-25





**LEGEND**

- EXISTING CYPRESS
- EXISTING EUCALYPTUS TO REMAIN
- TB TEE BOXES
- CART PATHS
- PROPOSED NEW HESPEROCYPARIS MACROCARPA TREES ON SHEET L-1.3
- PROPOSED NEW METROSIDEROS EXCELSA TREES ON SHEET L-1.3
- PROPOSED NEW QUERCUS AGRIFFOLIA or QUERCUS TOMENTELLA TREES ON SHEET L-1.3
- MULCH
- SAND TRAP
- SAND ROUGH AREA
- SANDSTONE BOULDERS

**ESHA BOUNDARY LEGEND**  
(SHOWN ON 1"=40' SCALE PLANS)

- ESHA 100' BUFFER
- RAPHAELI ESHA BOUNDARY
- PURPLE NEEDLE GRASS ESHA BOUNDARY
- GENERAL ESHA BOUNDARY (SEE BIOLOGIST'S REPORT)
- SEE SHEET L-0.3 FOR RESTORATIVE PLANTING IN THESE AREAS

SHEET L-1.2

SHEET L-1.6

PRELIMINARY LANDSCAPE LAYOUT PLAN



SCALE: 1" = 40'-0"

The landscape architect and his consultants do not warrant or guarantee the accuracy and completeness of the work product herein beyond a reasonable diligence. If any mistakes, omissions, or discrepancies are found to exist within the work product, the landscape architect shall be promptly notified so that he may have the opportunity to take whatever steps necessary to resolve them. Failure to promptly notify the landscape architect of such conditions shall constitute the landscape architect's acceptance of the work product as shown. The landscape architect and his consultants shall not be responsible for the consequences of any such discrepancies. Actions without the knowledge and consent of the landscape architect or in contradiction to the landscape architect's work product or recommendations shall become the responsibility not of the landscape architect but of the parties responsible taken such action. This plan and design are the exclusive property of Earthform Design and cannot be used or reproduced without the landscape architect's written consent.

PROGRESS PRINT  
NOT FOR CONSTRUCTION



**REVISIONS**

NO.	DATE	BY	DESCRIPTION
1	05/15/25	XX	Initial Design

**EARTHFORM**  
DESIGN

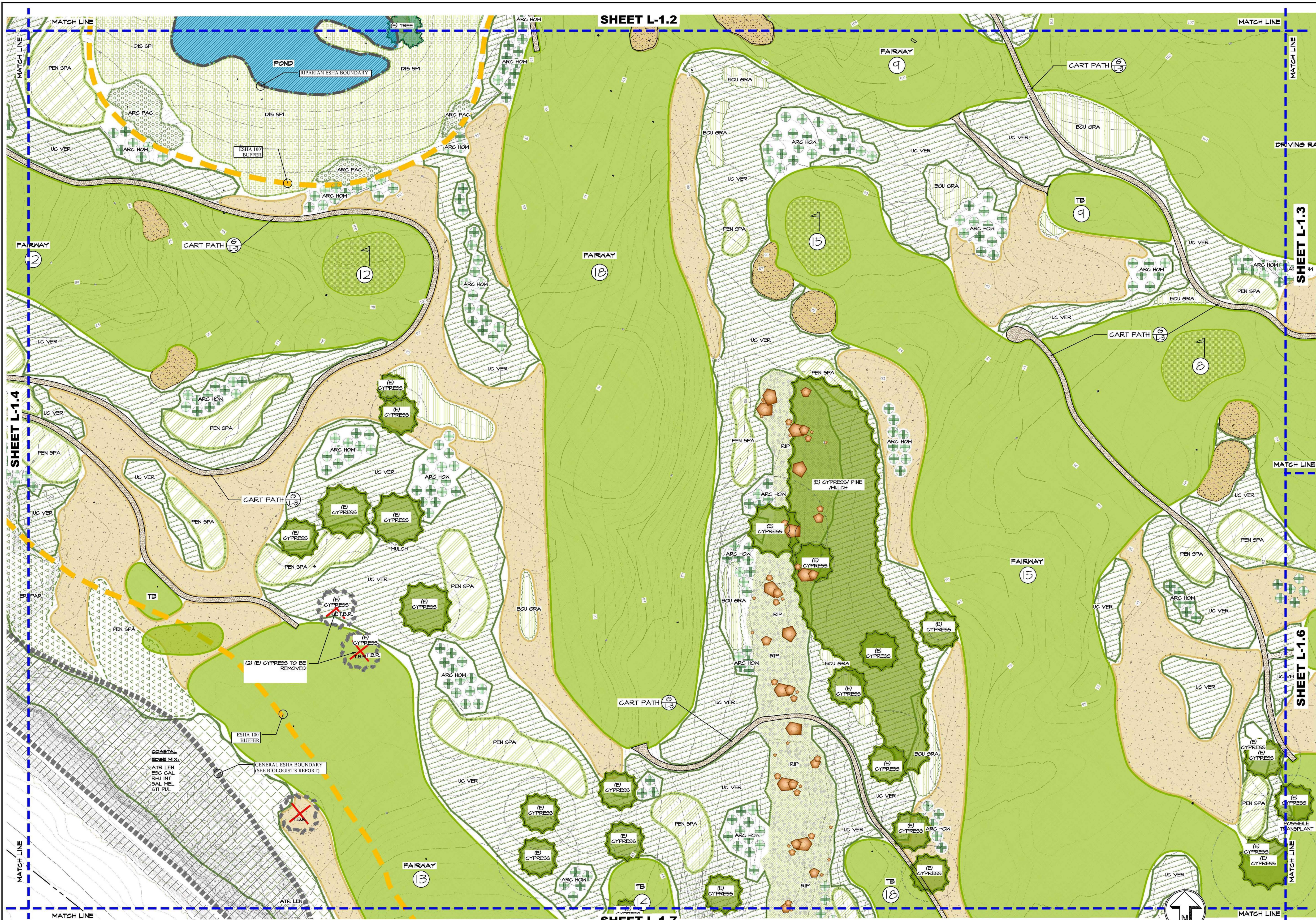
**SANDPIPER GOLF CLUB**  
7925 HOLLISTER AVE.  
SANTA BARBARA, CA. 93117

Date: 05/15/25  
Scale: 1" = 40'-0"  
Drawn: XX  
Job: SANDPIPER  
Print Date:  
Sheet: 1-1.3 of 3









PRELIMINARY LANDSCAPE LAYOUT PLAN

The landscape architect and his consultants do not warrant or guarantee the accuracy and completeness of the work product herein beyond a reasonable diligence. If any mistakes, omissions, or discrepancies are found to exist within the work product, the landscape architect shall be promptly notified so that he may have the opportunity to take whatever steps necessary to resolve them. Failure to promptly notify the landscape architect of such discrepancies, omissions, or errors shall constitute acceptance of the work product by the client. The landscape architect and his consultants shall not be responsible for the consequences of such discrepancies, omissions, or errors. The landscape architect and his consultants shall not be responsible for the consequences of such discrepancies, omissions, or errors. The landscape architect and his consultants shall not be responsible for the consequences of such discrepancies, omissions, or errors.

PROGRESS PRINT  
NOT FOR CONSTRUCTION



REVISIONS BY

1	05/15/25	XX	SANDPIPER
2	05/15/25	XX	SANDPIPER
3	05/15/25	XX	SANDPIPER
4	05/15/25	XX	SANDPIPER
5	05/15/25	XX	SANDPIPER
6	05/15/25	XX	SANDPIPER
7	05/15/25	XX	SANDPIPER
8	05/15/25	XX	SANDPIPER
9	05/15/25	XX	SANDPIPER
10	05/15/25	XX	SANDPIPER
11	05/15/25	XX	SANDPIPER
12	05/15/25	XX	SANDPIPER
13	05/15/25	XX	SANDPIPER
14	05/15/25	XX	SANDPIPER
15	05/15/25	XX	SANDPIPER
16	05/15/25	XX	SANDPIPER
17	05/15/25	XX	SANDPIPER
18	05/15/25	XX	SANDPIPER
19	05/15/25	XX	SANDPIPER
20	05/15/25	XX	SANDPIPER
21	05/15/25	XX	SANDPIPER
22	05/15/25	XX	SANDPIPER
23	05/15/25	XX	SANDPIPER
24	05/15/25	XX	SANDPIPER
25	05/15/25	XX	SANDPIPER
26	05/15/25	XX	SANDPIPER
27	05/15/25	XX	SANDPIPER
28	05/15/25	XX	SANDPIPER
29	05/15/25	XX	SANDPIPER
30	05/15/25	XX	SANDPIPER
31	05/15/25	XX	SANDPIPER
32	05/15/25	XX	SANDPIPER
33	05/15/25	XX	SANDPIPER
34	05/15/25	XX	SANDPIPER
35	05/15/25	XX	SANDPIPER
36	05/15/25	XX	SANDPIPER
37	05/15/25	XX	SANDPIPER
38	05/15/25	XX	SANDPIPER
39	05/15/25	XX	SANDPIPER
40	05/15/25	XX	SANDPIPER
41	05/15/25	XX	SANDPIPER
42	05/15/25	XX	SANDPIPER
43	05/15/25	XX	SANDPIPER
44	05/15/25	XX	SANDPIPER
45	05/15/25	XX	SANDPIPER
46	05/15/25	XX	SANDPIPER
47	05/15/25	XX	SANDPIPER
48	05/15/25	XX	SANDPIPER
49	05/15/25	XX	SANDPIPER
50	05/15/25	XX	SANDPIPER
51	05/15/25	XX	SANDPIPER
52	05/15/25	XX	SANDPIPER
53	05/15/25	XX	SANDPIPER
54	05/15/25	XX	SANDPIPER
55	05/15/25	XX	SANDPIPER
56	05/15/25	XX	SANDPIPER
57	05/15/25	XX	SANDPIPER
58	05/15/25	XX	SANDPIPER
59	05/15/25	XX	SANDPIPER
60	05/15/25	XX	SANDPIPER
61	05/15/25	XX	SANDPIPER
62	05/15/25	XX	SANDPIPER
63	05/15/25	XX	SANDPIPER
64	05/15/25	XX	SANDPIPER
65	05/15/25	XX	SANDPIPER
66	05/15/25	XX	SANDPIPER
67	05/15/25	XX	SANDPIPER
68	05/15/25	XX	SANDPIPER
69	05/15/25	XX	SANDPIPER
70	05/15/25	XX	SANDPIPER
71	05/15/25	XX	SANDPIPER
72	05/15/25	XX	SANDPIPER
73	05/15/25	XX	SANDPIPER
74	05/15/25	XX	SANDPIPER
75	05/15/25	XX	SANDPIPER
76	05/15/25	XX	SANDPIPER
77	05/15/25	XX	SANDPIPER
78	05/15/25	XX	SANDPIPER
79	05/15/25	XX	SANDPIPER
80	05/15/25	XX	SANDPIPER
81	05/15/25	XX	SANDPIPER
82	05/15/25	XX	SANDPIPER
83	05/15/25	XX	SANDPIPER
84	05/15/25	XX	SANDPIPER
85	05/15/25	XX	SANDPIPER
86	05/15/25	XX	SANDPIPER
87	05/15/25	XX	SANDPIPER
88	05/15/25	XX	SANDPIPER
89	05/15/25	XX	SANDPIPER
90	05/15/25	XX	SANDPIPER
91	05/15/25	XX	SANDPIPER
92	05/15/25	XX	SANDPIPER
93	05/15/25	XX	SANDPIPER
94	05/15/25	XX	SANDPIPER
95	05/15/25	XX	SANDPIPER
96	05/15/25	XX	SANDPIPER
97	05/15/25	XX	SANDPIPER
98	05/15/25	XX	SANDPIPER
99	05/15/25	XX	SANDPIPER
100	05/15/25	XX	SANDPIPER

EARTHFORM

DESIGN

LANDSCAPE ARCHITECTURE - LAND PLANNING - TURFMAN DESIGN

TEL: (805) 983-2008 FAX: (805) 983-8336

SANDPIPER GOLF CLUB

7925 HOLLISTER AVE.

SANTA BARBARA, CA. 93117

05/15/25

1" = 40'-0"

XX

SANDPIPER

Print Date

1-1.1

Sheet



