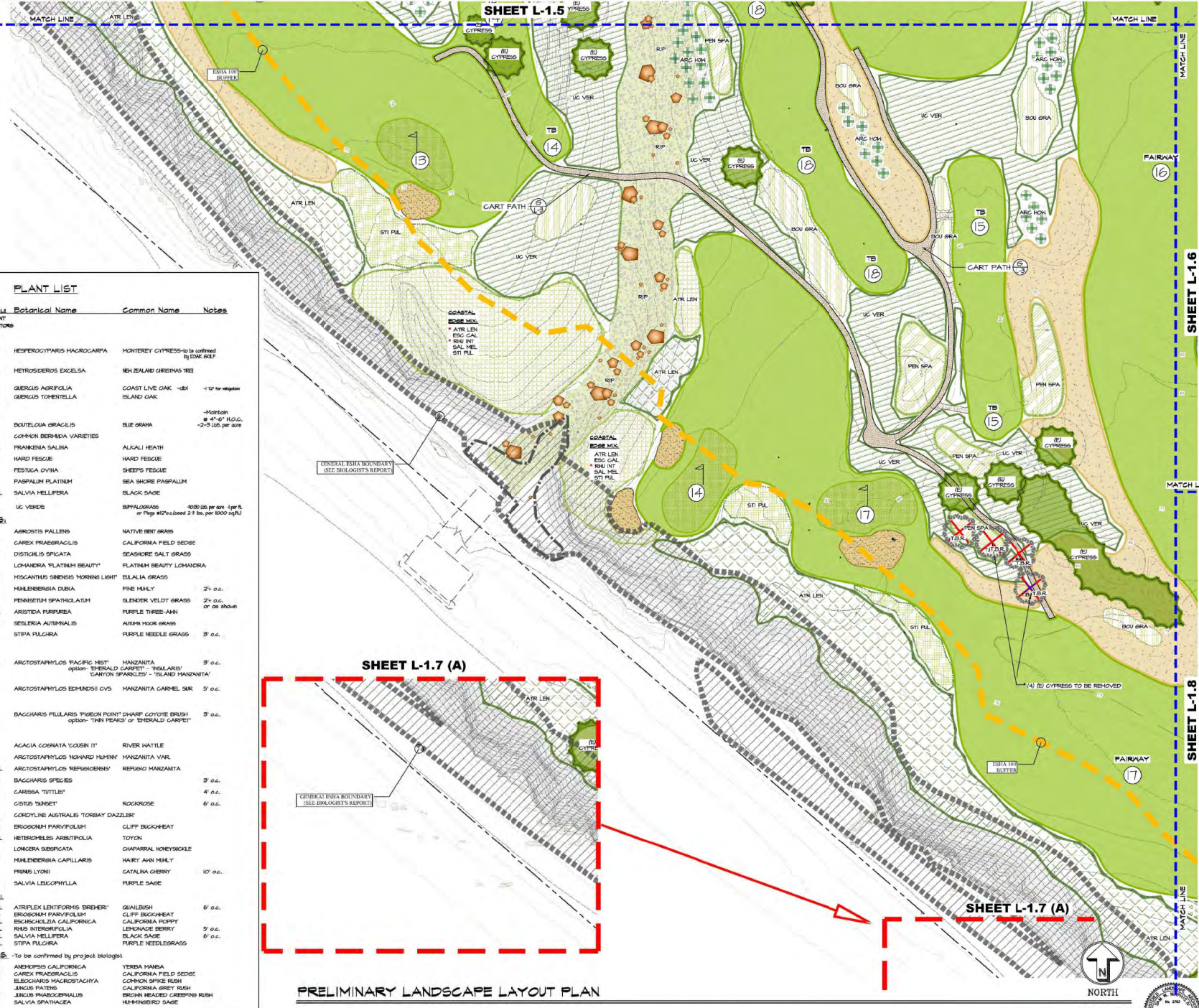
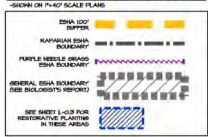
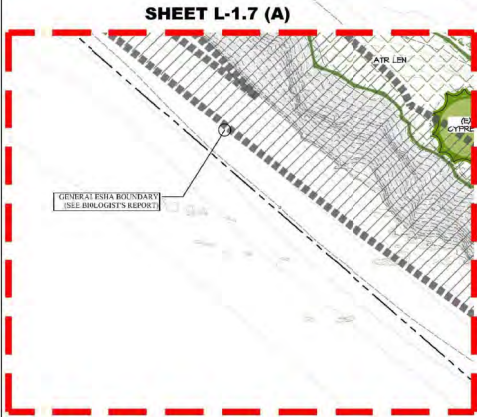


ESHA BOUNDARY LEGEND



PLANT LIST

Qty	Code	Size	PLANT FACTORS	Botanical Name	Common Name	Notes
TREES:						
10	HES MAG	48"-60"	M	HESPEROCYPRIS MACROCARPA	MONTREY CYPRESS	To be confirmed by ESHA 60%
2	MET EXC	36"-48"	L	METROSIDEROS EXCELSA	NEW ZEALAND CHRISTMAS TREE	
7	COE AGR	40"-12"	L	QUERCUS AGRIFFOLIA	COAST LIVE OAK	10' for migration
7	COE TOR	40"-60"	L	QUERCUS TOBENTELLA	ISLAND OAK	
GROUND COVER:						
1000	BOU GRA	10"	L	BOUETOUA GRACILIS	BLUE GRAMA	4-Mat/ton @ 4' x 6' 1/2" x 2-3 lbs. per area
10	COM DER	10"	L	COMMON DERBYDA VARIETIES		
10	FRS SAL	10"	VL	FRANKENIA SALINA	ALKALI HEATH	
10	HAR FES	10"	L	HARD FESCUE	HARD FESCUE	
10	FES CVY	10"	L	FESTUCA CVINA	SHEEP'S FESCUE	
20000 SF	PAS PAL	10"	L	PASPALUM PLATINUM	SEA SACRE PASPALLUM	
10	SAL MEL	50"	VL	SALVIA MELLIFERA	BLACK SAGE	
15	UC VER	10"	L	UC VERDE	BLACK SAGE	4000 lbs per acre - 1 per ft. or Plug 4 1/2" x 6 1/2" @ 2-3 lbs. per 1000 sq ft.
OTHER GRASSES:						
10	AGR PAL	10"	L	AGROSTIS PALLENS	NATIVE BEET GRASS	
10	CAR PRA	10"	M	CAREX PRASERACILIS	CALIFORNIA FIELD SEDGE	
10	DIS SPI	10"	L	DISTICHLIS SPICATA	SEASHORE SALT GRASS	
10	LOM PLA	10"	M	LOMANORA PLATINUM BEAUTY	PLATINUM BEAUTY LOMANORA	
10	HIS MOR	10"	M	HISCANTHUS SINENSIS MORNING LIGHT	ELIALIA GRASS	
10	MH DUB	10"	L	MULENBERGIA DUBIA	PINE HAWLY	2' o.c.
10	FEN SPA	10"	L	FENESTRUM SPATHULATUM	SLENDER VELDIT GRASS	2' o.c. or as shown
10	ARI PUR	1-50"	VL	ARISTIDA PURPUREA	PURPLE THREE-ANN	
10	SES AUT	10"	M	SESLERIA AUTUMNALIS	AUTUMN HOOR GRASS	
10	STI PUL	10"	L	STIPA PULCHRA	PURPLE NEEDLE GRASS	3' o.c.
LOW SHRUBS:						
10	ARG PAC	1-50"	L	ARGENTOPHYLLUS PACIFICUS	MANZANITA	3' o.c.
10	ARG EDM	50"	L	ARGENTOPHYLLUS EDMUNDSONI	MANZANITA	3' o.c.
10	BAG PIL	1-50"	L	BAGCHARIS PILLULARIS	PIRENE POINT CHAMP COYOTE BRUSH	3' o.c.
SHRUBS:						
10	AGA COB	50"	L	AGACIA COGNATA	COUSIN IT	RIVER HATTEL
10	ARG HOM	50"	L	ARGENTOPHYLLUS HOWARD MANNING	MANZANITA VAR.	
10	ARG REF	50"	VL	ARGENTOPHYLLUS REFUGIENSIS	REFUGIO MANZANITA	
10	BAG SPE	50"	L	BAGCHARIS SPECIES		3' o.c.
10	CAR TUT	50"	L	CARRISSA TUTTLEI		4' o.c.
10	CIS SUN	50"	L	CISTIS SUNSET	ROCKROSE	6' o.c.
10	COR AUS	50"	L	CORYDINE AUSTRALIS	TORRAY DAZZLER	
10	ERI PAR	50"	VL	ERIOGONUM PARVIFOLIUM	CLIFF BUGKHEAT	
10	HET ARB	50"	VL	HETEROMELES ARBUSTIFOLIA	TOYON	
10	LOM SUB	50"	L	LOMGERA SUBSPICATA	CHAMPARRAL HONEYSAKLE	
10	MH CAP	50"	L	MULENBERGIA CAPILLARIS	HAIRY ANH MULEY	
10	PRU LYO	50"	L	PRUNUS LYONI	CATALINA CHERRY	10' o.c.
10	SAL LEO	50"	L	SALVIA LEUCOPHYLLA	PURPLE SAGE	
COASTAL EDGE:						
10	ATR LEN	50"	VL	ATRIPLEX LENTIFORMIS BREHNERI	GUALBUUSH	6' o.c.
10	ERI PAR	50"	VL	ERIOGONUM PARVIFOLIUM	CLIFF BUGKHEAT	
10	ESC CAL	50"	VL	ESCHOLAZIA CALIFORNICA	CALIFORNIA TORY	
10	RHU INT	50"	VL	RHUS INTERIORPOLIA	LEMONADE BERRY	3' o.c.
10	SAL MEL	50"	VL	SALVIA MELLIFERA	BLACK SAGE	6' o.c.
10	STI PUL	50"	VL	STIPA PULCHRA	PURPLE NEEDLEGRASS	
RIPARIAN AREAS: -to be confirmed by project biologist						
10	ANE CAL	50"	M	ANEMOPSIS CALIFORNICA	YERBA MANSA	
10	CAR PRA	50"	M	CAREX PRASERACILIS	CALIFORNIA FIELD SEDGE	
10	ESC CAL	50"	VL	ESCHOLAZIA CALIFORNICA	COMMON SPIRÉE RUSH	
10	JIN PAT	50"	M	JUNCUS PATENS	CALIFORNIA GREY RUSH	
10	JIN PRA	50"	M	JUNCUS PRAEDECORATUS	BROWN HEADED CREEPING RUSH	
10	SAL SPA	50"	L	SALVIA SPATHACEA	HAWK-WINGED SAGE	



PRELIMINARY LANDSCAPE LAYOUT PLAN

EARTHFORM DESIGN

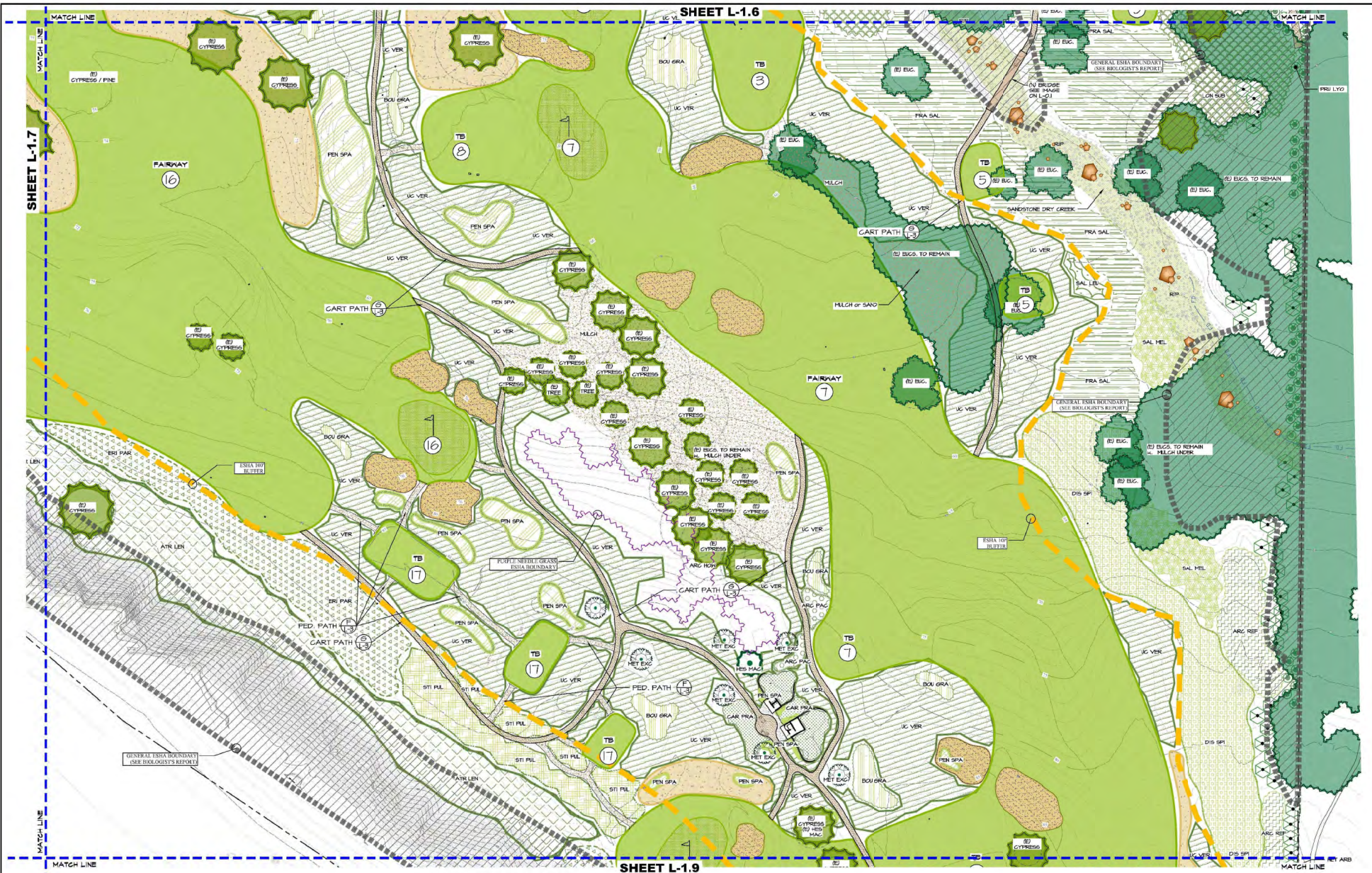
PRELIMINARY LANDSCAPE LAYOUT PLAN

SANDPIPER GOLF CLUB
7925 HOLLISTER AVE.
SANTA BARBARA, CA. 93117

DATE: 08/15/23
SCALE: 1" = 40'-0"

PROGRESS PRINT
NOT FOR CONSTRUCTION

SCALE: 1" = 40'-0"



ESHA BOUNDARY LEGEND
SHOWN ON PLAN SCALE PLANS

	ESHA BOUNDARY
	RAVINE/DRY CREEK BOUNDARY
	PURPLE NEEDLE GRASS ESHA BOUNDARY
	GENERAL ESHA BOUNDARY (SEE BIOLOGIST'S REPORT)
	SEE SHEET L-1.9 FOR RESTRICTIONS APPLICABLE IN THESE AREAS

- PROPOSED NEH HESPERIDOCYPARIS MACROCARPA TREES ON SHEET L-1.6
- PROPOSED NEH METROSIDEROS EXCELSA TREES ON SHEET L-1.6

PRELIMINARY LANDSCAPE LAYOUT PLAN



PROGRESS PRINT
NOT FOR CONSTRUCTION

EARTHFORM DESIGN
10000 100th Ave, Suite 100, San Diego, CA 92126
Tel: (619) 592-2000 Fax: (619) 592-8822

PRELIMINARY LANDSCAPE LAYOUT PLAN

SANDPIPER GOLF CLUB
7925 HOLLISTER AVE.
SANTA BARBARA, CA. 93117

DATE: 09/15/20
SCALE: 1" = 40'-0"
DRAWN: KK
CHECKED: SANDPIPER
PROJECT: SANDPIPER

L-1.6

REVISIONS	NO.	DATE	DESCRIPTION

The landscape architect and the contractor do not warrant or guarantee the accuracy and completeness of the work product herein based on a reasonable diligence. If any violation, omission, or discrepancy is found in part within the work product, the landscape architect shall be promptly notified so that he may have the opportunity to take whatever steps necessary to resolve them. Parties to this contract shall be deemed to have accepted the work product of the landscape architect and the contractor. The landscape architect shall not be held responsible for any errors or omissions in the work product of the contractor. The landscape architect and the contractor shall be held jointly and severally liable for any errors or omissions in the work product of the landscape architect and the contractor. This plan and design are the exclusive property of Earthform Design and shall not be used or reproduced without the landscape architect's written consent.

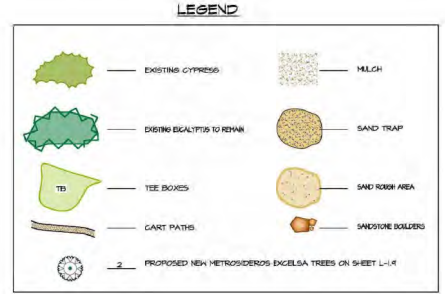
SHEET L-1.8



PRELIMINARY LANDSCAPE LAYOUT PLAN



Qty.	Code	Size	Plant Factors	Botanical Name	Common Name	Notes
TREES:						
10	HES MAC	48"-60"	M	HESPEROCYPARIS MACROCARPA	MONTEREY CYPRESS	-to be confirmed by DOKI BOJ
12	HET EXC	36"-48"	M	HETROSIDEROS EXCELSA	NEW ZEALAND GIRDING FEE	
1	TBD. QLE AGR	48"-12"	L	QUERCUS AGRIFOLIA	COAST LIVE OAK	-1" for staging
1	TBD. QLE TOM	48"-60"	L	QUERCUS TORRENTIELLA	ISLAND OAK	
GROUND COVER:						
10247	BOU GRA	16"	L	BOUQUETIA GRACILIS	BLUE GRAMA	-1/4" thick @ 4'-0" M.O.C. -2.5 lbs. per sq.ft.
	COH DER	16"	L	COMMON BERMUDA VARIETIES		
	FRA SAL	16"	VL	FRANKENIA SALINA	ALKALI HEATH	
	HAR PES	16"	L	HARD FESCUE	HARD FESCUE	
	PES OVI	16"	L	FESTUCA OVINA	SHEEP'S FESCUE	
	PAS PAL	16"	L	PASPALUM PLATINUM	SEA SHORE PASPALUM	
	SAL HEL	50"	VL	SALVIA HELLIPERA	BLACK SAGE	
	UC VER	16"	L	UC VERVE	BUFFALOGRASS	-10-20 lbs. per sq. ft. per ft. or Plug @ 20x20x2-3 lbs. per 1000 sq.ft.
OTHER GRASSES:						
	AGR PAL	16"	L	AGROSTIS PALLENS	NATIVE BENT GRASS	
	CAR FRA	16"	M	CAREX FRAGRACILIS	CALIFORNIA FIELD SEDGE	
	DIS SPI		L	DISTICHIS SPICATA	SEASHORE SALT GRASS	
	LOH PLA	16"	L	LOMANERA PLATINUM BEAUTY	PLATINUM BEAUTY LOMANERA	
	MIS HOR	50"	M	MISCANTHUS SINENSIS MORNING LIGHT	SEALIA GRASS	
	MH OBI	16"	L	MULLENBERGIA DUBA	FIRE MILLY	2" o.c.
	PEN SPA	16"	L	PENNISETUM SPATIOLATUM	SLENDER WILD T GRASS	2" o.c. or as shown
	ARI PUR	1-50"	VL	ARISTIDA PURPUREA	PURPLE THREE-ANE	
	SES AUT	16"	M	SESLERIA AUTUMNALIS	AUTUMN HOOR GRASS	
	STI PUL	16"	L	STIPA PULGREA	PURPLE NEEDLE GRASS	3" o.c.
LOW SHRUBS:						
	ARG PAC	1-50"	L	ARGOSTAPHYLOS PACIFIC MIST	HANZANTA	3" o.c. option: 'EMERALD CARPET' - 'ISLANDS' 'CANYON SPARKLES' - 'ISLAND MANZANTA'
	ARG EDM	50"	L	ARGOSTAPHYLOS EDMUNDSI CVS	HANZANTA CARREL SUR	5" o.c.
	BAG PL	1-50"	L	BAGCHIARIS PILLARIS PIGEON POINT DWARF	COTYOTE BRUSH	3" o.c. option: 'THIN PEAKS' or 'EMERALD CARPET'
SHRUBS:						
	ACA COB	50"	L	ACACIA COGNATA COUSIN IT	RIVER HATTEL	
	ARG HOH	50"	L	ARGOSTAPHYLOS HOWARD MUMBY	HANZANTA VAR.	
	ARG REF	50"	VL	ARGOSTAPHYLOS REFUGIENSIS	REFUGIO HANZANTA	
	BAG SPE	50"	L	BAGCHIARIS SPECIES		3" o.c.
	CAR TUT	50"	L	CARRISA TUTTLE		4" o.c.
	CIS SUN	50"	L	CISTIS SUNSET	ROCKROSE	6" o.c.
	COR AUS	50"	L	CORYDINE AUSTRALIS TORBAY DAZZLER		
	ERI PAR	VL	VL	ERIOGONUM PARVIFOLIUM	CLIFF BUCKWHEAT	
	HET ARB	50"	VL	HETEROMELES ARBUTIFOLIA	TOYON	
	LON SB	50"	L	LONGERA SUBSPICATA	GHAFARRAL HONEYBUCKLE	
	MH CAP	50"	L	MULLENBERGIA CAPILLARIS	HAIRY ANN MILLY	
	PRU LYO	50"	L	PRUNUS LYONI	CATALINA CHERRY	12" o.c.
	SAL LEU	50"	L	SALVIA LEUCOPHYLLA	PURPLE SAGE	
COASTAL EDGE:						
	ATR LEN	50"	VL	ATRIPLEX LENTIFORMIS TREHERI	QUALIBUSH	6" o.c.
	ERI PAN	50"	VL	ERIOGONUM PANICULIFOLIUM	CLIFF BUCKWHEAT	
	ESC CAL	50"	VL	ESCHSCHOLIA CALIFORNICA	CALIFORNIA POPPY	
	RAJ INT	50"	VL	RAJIS INTERFOLIA	LEMONADE BERRY	5" o.c.
	SAL HEL	50"	VL	SALVIA HELLIPERA	BLACK SAGE	
	STI PUL	50"	VL	STIPA PULGREA	PURPLE NEEDLEGRASS	6" o.c.
RIPARIAN AREAS: -To be confirmed by project biologist						
	ANE CAL	50"	M	ANEMOPSIS CALIFORNICA	YERBA MANSA	
	CAR FRA	50"	M	CAREX FRAGRACILIS	CALIFORNIA FIELD SEDGE	
	ELE MAC	50"	H	ELEOCHARIS MACROSTACHYA	COMMON SEDGE RUSH	
	JIN PAT	50"	M	JUNCUS PATENS	CALIFORNIA GREY RUSH	
	JIN PHA	50"	M	JUNCUS PHAEOCEPHALUS	BROWN HEADED CREEPING RUSH	
	SAL SPA	50"	L	SALVIA SPATIANGEA	HAWKINGBIRD SAGE	



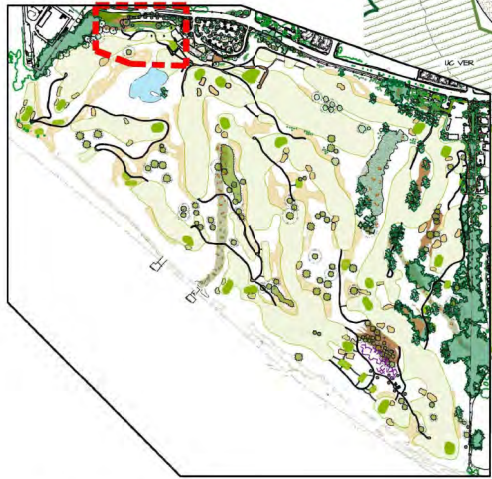
The landscape architect and the contractor do not warrant or guarantee the accuracy and completeness of the work product herein beyond a reasonable degree. If any omissions, mistakes, or discrepancies are found in said work product, the landscape architect shall be promptly notified so that they may have the opportunity to take whatever steps necessary to resolve them. Parties to this agreement shall be responsible for the maintenance and replacement of any plants and materials used in the landscape. The landscape architect shall be responsible for the maintenance and replacement of any plants and materials used in the landscape. The landscape architect shall be responsible for the maintenance and replacement of any plants and materials used in the landscape. The landscape architect shall be responsible for the maintenance and replacement of any plants and materials used in the landscape.

PAVING LEGEND:

- BELIARD AQUALINA PAVERS
- MAIN DRIVE - SET IN LINEAR PATTERN MIX IN MAIN DRIVE
- TURN AROUND AND DROP OFF AREAS - SET IN HERRINGBONE W/ THINNER PIECES ONLY

ESHA BOUNDARY LEGEND

- ESHA 001 BARRIER
- RAPHAELI ESHA BARRIER
- PURPLE HESLE BRASS BARRIER
- GENERAL BOUNDARY (SEE BULLOCH'S REPORT)
- SEE SHEET L-13 FOR RESTORATIVE PLANTING IN THESE AREAS



SITE MAP

SCALE: 1" = 400'-0"



SANDPIPER GOLF CLUB - HOLLISTER AVE WEST PARKING LOT PRELIMINARY PLANTING PLAN



NORTH

SCALE: 1" = 20'-0"

SANDPIPER GC CLUBHOUSE AND PARKING LOT PLANT LIST

Symb	Qty	Code	Size	WxL	Botanical Name	Common Name	Notes
TREES - LARGE:							
[Symbol]	44	HES MAC	48"-60"	M	HESPEROPHYTIS MACROCARPA	MONTEREY CYPRESS	-DRIP
[Symbol]		GIE AGR	48"-12"	L	QUERCUS AGRIFFOLIA	COAST LIVE OAK	-DRIP
[Symbol]		GIE TOR	48"-60"	L	QUERCUS TOBENELLA	ISLAND OAK	-DRIP
[Symbol]		GIE VIR	48"-60"	L	QUERCUS VIRGINIANA	SOUTHERN LIVE OAK	-DRIP
MEDIUM:							
[Symbol]	35	ACA SIE	36"-48"	L	ACACIA STENOPHYLLA	SHRIMPING ACACIA	-DRIP
[Symbol]		CLP ANA	36"-48"	M	CEPANOPIUS ANACARDIODES	CARROTHOOD	-DRIP
[Symbol]		HET EXG	36"-48"	L	HETEROGERIUS EXCELSA	NEW ZEALAND CHRISTMAS TREE	-DRIP
SCREEN SHRUBS:							
[Symbol]	11	HET ARB	5-8g	VL	HESTERHELES ARBUTIFOLIA	TOTON	-DRIP
[Symbol]		ILE AGL	5-8g	M	ILEX AGUIFOLIUM	ENGLISH HOLLY	
[Symbol]	161	LAU N29	15-24"	L	LAURUS NOBILIS SARATOGA'	SHEET BAY LAUREL	#5% c - screen hedge DRIP

[Symbol]	10N SIB	5g	L	LONGICHA SUBSPICATA	CHAMPARILL HONEYBUCKLE		
[Symbol]	LYC CAL	5g	VL	LYCICHM CALIFORNICUM	ROCK THORN	Under Red Hat beauty left leg	
[Symbol]	HET EXG	3E RES	L	HEIROSIDEROS EXCELSA	NEW ZEALAND CHRISTMAS TREE		
[Symbol]	MYO LAE	5-15g	L	MYOPORUM LAETUM	GLEAM N GREEN		
[Symbol]	PRU LYO	3-15g	L	FRAXINUS LYONII	CATALINA CHERRY		
[Symbol]	47	PYR VEN	5g	PIRROSESSIA VENUSTA	FLAME VINE	-non floung DRIP	
[Symbol]	RHA CRO	-	VL	RHAMNUS CROCGA	REDBERRY BUCKTHORN	Shore Red Hat beauty	
SHRUBS & GROUND COVERS:							
[Symbol]	37	ACA COB	5g	ACACIA GORNBATA	GORNBAT	-DRIP	
[Symbol]	LYC CAL	1-5g	VL	LYCICHM CALIFORNICUM	LITTLE RIVER HATTEL	-DRIP	
[Symbol]	HET EXG	3E RES	L	HEIROSIDEROS EXCELSA	PROSTRATE ACACIA		
[Symbol]	ARC VAR	1-5g	L	ARCISTOXYLUS VARIETES	PACIFIC HILL DIBBOL GARRET	-DRIP	
[Symbol]	ARC RES	5g	VL	ARCISTOXYLUS HILLIANS	ISLAND MANZANITA	-DRIP	
[Symbol]	ARC HOK	5g	VL	ARCISTOXYLUS HOWARDI	MANZANITA VAR.	-DRIP	
[Symbol]	BAC PFL	1-5g	L	BAGANUS PULCHER	NEW ZEALAND CHRISTMAS TREE	-DRIP	
[Symbol]	2,47	CAR TIT	5g	CAREX TITILLI	DIANUS NATAL FLUM	-DRIP	
[Symbol]	GIS VAR	5g	L	GISTIS VARIETES	ROCKROSE	-DRIP	
[Symbol]	GOR VAR	5g	L	GORREX VARIETES	ROCKROSE	-DRIP	
[Symbol]	HIO PAR	5g	VL	HIERONIMUS PARVIFLORUS	MYOPORUM COFFEEBERRY		
[Symbol]	RHA CAL	5g	VL	RHAMNUS CALIFORNICA	DIANUS NATAL FLUM		
[Symbol]	RHA LMB	5-15g	L	RHAMNUS LUMBELLATA	INDIAN HANTHORN		
[Symbol]	RHU INT	5g	VL	RHOLES INTENSIFOLIA	LEMONADE BERRY		
[Symbol]	ROS HR	5g	VL	ROSHARINUS YAMINGTONI	ROSEHART		

[Symbol]	484	ROS PRO	5g	L	ROSHARINUS OFFICIALIS	PROSTRATE ROSEHART	-DRIP
GRASSES - LOW GROWING:							
[Symbol]	1206	ASR PAL	seed - 1g	L	AGROSTIS PALLENS	SEASHORE BENT GRASS	-DRIP / SPRAY
[Symbol]	161	ESU GRA	1g	L	LEPNIS TRICOGIDES	LAISANTA	-DRIP / SPRAY
[Symbol]	161	ESU GRA	1g	L	BOULEDOIA GRACILIS	BURKE AMERICAN BLUE GRASS	-SPRAY
[Symbol]	161	ESU GRA	1g	L	BOULEDOIA GRACILIS	BLUE GRASS	-SPRAY
[Symbol]	161	ESU GRA	1g	L	BOULEDOIA GRACILIS	EUROPEAN GRAY SEDGE	-SPRAY
[Symbol]	161	ESU GRA	1g	L	BOULEDOIA GRACILIS	SAND DUNE SEDGE	-DRIP / SPRAY
[Symbol]	161	ESU GRA	1g	L	BOULEDOIA GRACILIS	CALIFORNIA FIELD SEDGE	-DRIP / SPRAY
[Symbol]	161	ESU GRA	1g	L	BOULEDOIA GRACILIS	GREENBEE HYBRID	-DRIP / SPRAY
[Symbol]	161	ESU GRA	1g	L	BOULEDOIA GRACILIS	BUFFALOGRASS	-SPRAY
GRASSES - TALLER GROWING:							
[Symbol]	161	ESU GRA	1g	L	BOULEDOIA GRACILIS	PLATINUM BEAUTY LOHNDRA	-DRIP
[Symbol]	161	ESU GRA	1g	L	BOULEDOIA GRACILIS	MISCANTHUS STENOS MORNING LIGHT	-DRIP
[Symbol]	161	ESU GRA	1g	L	BOULEDOIA GRACILIS	HARRY AHN MILLY	-DRIP
[Symbol]	161	ESU GRA	1g	L	BOULEDOIA GRACILIS	EVERGREEN FOUNTAIN GRASS	-DRIP
[Symbol]	161	ESU GRA	1g	L	BOULEDOIA GRACILIS	SLENDER VELDIT GRASS	-SPRAY

PROGRESS PRINT
NOT FOR CONSTRUCTION

EARTHFORM DESIGN
 1000 S. GARDEN ST. SUITE 200
 SAN ANTONIO, TX 78205
 TEL: 214.343.1111
 FAX: 214.343.1112
 WWW.EARTHFORMDESIGN.COM

SANDPIPER GOLF CLUB - HOLLISTER AVE WEST PARKING LOT PRELIMINARY PLANTING PLAN

**SANDPIPER GOLF CLUB
 7925 HOLLISTER AVE.
 SOLETA, CA 95117**

DATE: 05/15/23
 SCALE: 1" = 20'-0"
 DRAWN BY: N.T.
 CHECKED BY: SANDPIPER
 TITLE: SANDPIPER

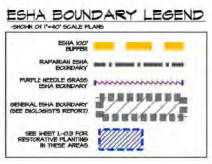
REVISIONS

NO.	DESCRIPTION	DATE
1	ISSUED FOR PERMIT	05/15/23
2	REVISED PER COMMENTS	05/15/23
3	REVISED PER COMMENTS	05/15/23
4	REVISED PER COMMENTS	05/15/23
5	REVISED PER COMMENTS	05/15/23
6	REVISED PER COMMENTS	05/15/23
7	REVISED PER COMMENTS	05/15/23
8	REVISED PER COMMENTS	05/15/23
9	REVISED PER COMMENTS	05/15/23
10	REVISED PER COMMENTS	05/15/23

The landscape architect and the contractor shall be jointly and severally liable for the accuracy and completeness of the work product herein. If any mistakes, omissions, or discrepancies are found in the work product, the landscape architect shall be primarily liable to the extent of the work product, and the contractor shall be primarily liable to the extent of the work product. The landscape architect and the contractor shall be jointly and severally liable for the accuracy and completeness of the work product herein. If any mistakes, omissions, or discrepancies are found in the work product, the landscape architect shall be primarily liable to the extent of the work product, and the contractor shall be primarily liable to the extent of the work product. The landscape architect and the contractor shall be jointly and severally liable for the accuracy and completeness of the work product herein. If any mistakes, omissions, or discrepancies are found in the work product, the landscape architect shall be primarily liable to the extent of the work product, and the contractor shall be primarily liable to the extent of the work product.

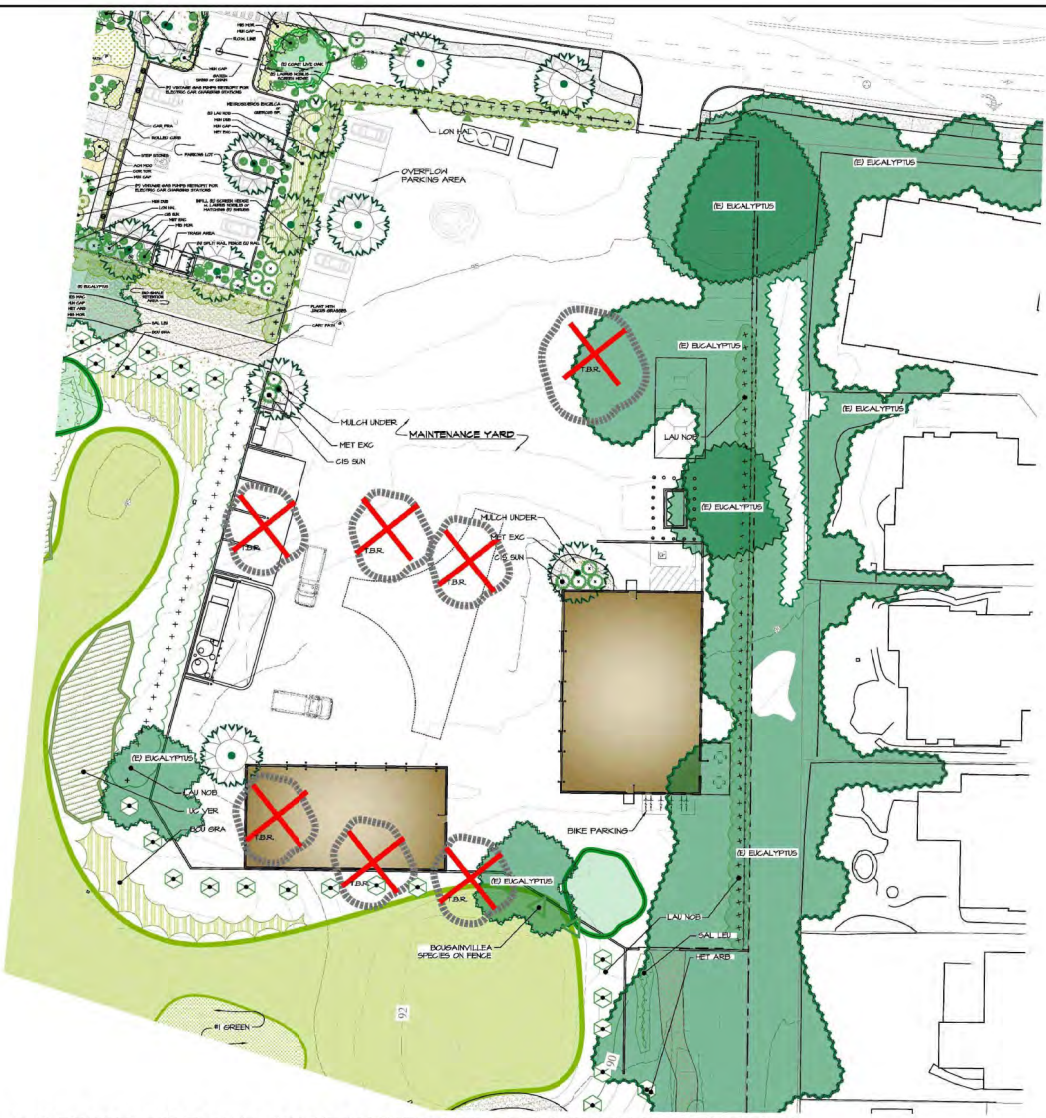


SITE MAP
 SCALE: 1" = 400'-0"



BUTTERFLY HABITAT @ BARNSDALL BOUNDARY

Symb.	Gty. Code	Size	PLANT FACTORS	Botanical Name	Common Name	Notes
	503	ACH MOO	L	ACHILLEA MOONSHINE	YARRON	-DRIP
	ERI CAN	VL		EPILOBIUM CANM	CALIFORNIA FIGWISIA	-DRIP
	ERI SLA	L		ERIGERON GLAUCCS	BEACH ASTER	-DRIP
	ERI LBI	L		ERIGERON LIBELLATIM	SILVER FLOWER BUCKWHEAT	-DRIP
	ERI STA	L		ERIGERON STAECHADIFOLIUM	SEASIDE WOOLLY SUNFLOWER	-DRIP
	ERI CAM	VL		GRINDLIA CANFORUM	GREAT VALLEY GUM PLANT	-DRIP
	MON ZOO	L		MONARDELLA OCCIDENTALISSIMA	MOUNTAIN MONARDELLA	-DRIP
	HEM ROS	L		MULLENBERGIA RUPEM	DOGWOOD	-DRIP
	PEN HET	L		PENSTEMON HETEROPHYLLUS	FOOTHILL PENSTEMON	-DRIP
	SAL LBI	VL		SALVIA LEUCOPHYLLA	PURPLE SAGE	-DRIP
	SOE VIL	L		SOLEIAS VILLOSA	CALIFORNIA GOLDENROD	-DRIP
	VER LAS	L		VERBENA LASIOSTACHYS	WESTERN VERVAIN VERBENA	-DRIP



SANDPIPER GOLF CLUB - MAINTENANCE YARD PRELIMINARY PLANTING PLAN



MAINTENANCE YARD PLANT LIST

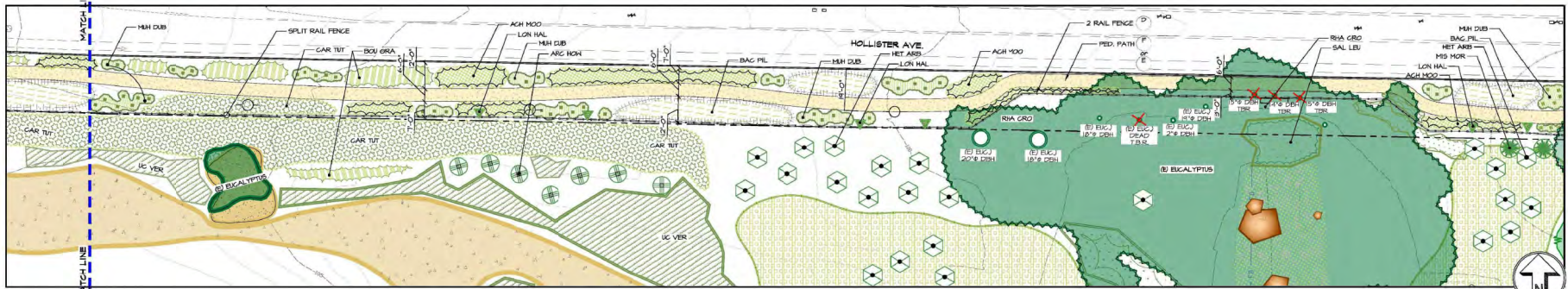
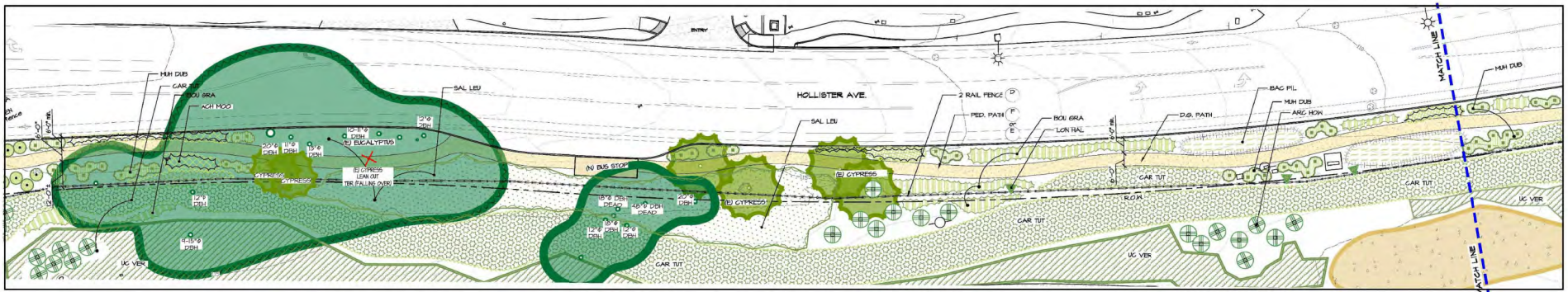
Symb.	Gty. Code	Size	PLANT FACTORS	Botanical Name	Common Name	Notes
	HES MAG	18'-60' x 48'	M	HESPEROPYRIS MACROCARPA	MONTEREY CYPRESS	-DRIP
	HET EXG	36'-48' x 36'	L	HETEROPIERIS DEXELSA	MONTEZUMA CHRISTMAS TREE	-DRIP
	ACA SITE	36'-48' x 36'	L	ACACIA STENOPHYLLA	SHOESTRING ACACIA	-DRIP
	HET ARB	50'	VL	HETEROCHELES ARBUTIFOLIA	TOYON	-DRIP
	ILE AGU	50'	M	ILEX AQUIFOLIUM	ENGLISH HOLLY	-DRIP
	LAU NOB	50'	L	LAURUS NOBILIS 'SARATOGA'	SWEET BAY LAUREL @ 5' oc. -screen hedge-DRIP	-DRIP

Symb.	Gty. Code	Size	PLANT FACTORS	Botanical Name	Common Name	Notes
	LOH SUB	50'	L	LOMBARDIA SUBSCICATA	CHAMPAGNE HONEYBUCKLE	-on fence -DRIP
	PHY VEN	50'	L	PHYSTOSIA VENUSTA	FLAME VINE	-on fence -DRIP
	RHA GRO	1g	VL	RHAMNUS GROCCA	REDBERRY BUCKTHORN	-DRIP
	ACA COB	5g	L	ACACIA COBATA 'GOURN IT'	LITTLE RIVER WATTLE	-DRIP
	ACH MOO	1g	L	ACHILLEA MOONSHINE	YARRON	-DRIP
	ACA RED	1g	VL	ACACIA REDOLENS 'LON BOY'	PROSTRATE ACACIA	-DRIP
	ARG VAR	1g	L	ARGENTOPHYLOS VARIETIES	PACIFIC HSE. EMERALD CARPET	-DRIP
	ARG INS	1g	VL	ARGENTOPHYLOS VARIETIES	ISLAND HAZELNUT	-DRIP
	ARG NOK	5g	L	ARGENTOPHYLOS 'HOWARD HAZELNUT'	HAZELNUT VAR.	-DRIP
	BAC FIL	5g	L	BACCHARIS PILULARIS 'TWIN PEAKS'	CHART' COYOTE BRUSH	-DRIP
	CAR TUT	5g	L	GARRISA 'TUTTLE' & 'GREEN CARPET'	DWARF NATAL FLUM	-DRIP
	CIS VAR	5g	L	CISTIS VARIETIES	ROCKROSE	-DRIP
	COR TOR	5g	L	CORYLINA AUSTRALIS 'TERRY DAZZLER'	TERRY DAZZLER BRAN PAM	-DRIP

Symb.	Gty. Code	Size	PLANT FACTORS	Botanical Name	Common Name	Notes
	BOU GRA	1g	L	BOULEGIA GRACILIS ELKODE AFFECTION	ELKODE AFFECTION BLUE GRAMA	-SPRAY
	BOU GRA	1g	L	BOULEGIA GRACILIS	BLUE GRAMA GRASS	-SPRAY
	CAR DIA	1g	L	CAREX DIALSA	EUROPEAN GRAY SEDGE	-SPRAY
	CAR PAN	1g	M	CAREX PANSA	SAND DUNE SEDGE	-DRIP / SPRAY
	CAR PRA	1g	M	CAREX PRAERACILIS	CALIFORNIA FIELD SEDGE	-DRIP / SPRAY
	SES SPP	1g	M	SESLERIA SPECIES	GRIZZLE HYBRID	-DRIP / SPRAY
	UG VER	1g	L	UG VERDE	BUFFALOGRASS	-SPRAY
	LOH PLA	1g	L	LOMANDRA PLATINUM BEAUTY	PLATINUM BEAUTY LOMANDRA	-DRIP
	HIS HOR	1g	M	HISCANTHUS SINENSIS MORNING LIGHT	ESALIA GRASS	-DRIP
	HIS CAP	1g	L	HISLERBERGIA CAPILLARIS	HART ANN HULLY	-DRIP
	HIS DUB	1g	L	HISLERBERGIA DUBA	FIRE HULLY	-DRIP
	PEN FAI	1g	M	PENNETUM FAIRY TAILS	EYESGREEN FOUNTAIN GRASS	-DRIP
	PEN SPA	1g	L	PENNETUM SPATHULATUM	SLINDER VELD.T GRASS	-SPRAY

The landscape architect and the contractor do not warrant or guarantee the accuracy and completeness of the work product herein beyond a reasonable duration. If any mistakes, omissions, or discrepancies are found in work within the work product, the landscape architect shall be promptly notified as soon as they are found. The contractor shall be responsible for the completeness of any documents, drawings, and notes, as the landscape architect or its consultant. The contractor shall be responsible for the completeness of any documents, drawings, and notes, as the landscape architect or its consultant. The contractor shall be responsible for the completeness of any documents, drawings, and notes, as the landscape architect or its consultant.

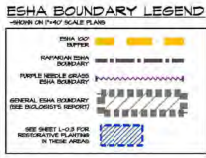




SANDPIPER GOLF CLUB - HOLLISTER AVE PRELIMINARY PLANTING PLAN

BUTTERFLY HABITAT @ HOLLISTER AVE. FRONTAGE

Symb.	Qty.	Code	Size	Notes	Botanical Name	Common Name	Notes
PLANT FACTORS							
[Symbol]	1000	ACH HOO	-	L	ACHILLEA MOORSHINE*	YARROW	-CRIP
[Symbol]	1	ERI CAN	-	NL	ERIOGONUM CANUM	CALIFORNIA RICHIA	-CRIP
[Symbol]	1	ERI ILSA	-	L	ERIOGONUM GLAUCUM	BEACH ASTER	-CRIP
[Symbol]	1	ERI IPIB	-	L	ERIOGONUM IMBELLITUM	SALPHUR-FLOWER BUGHEAT	-CRIP
[Symbol]	1	ERI STA	-	L	ERIOGONUM STAGNADIFOLIUM	SEAGIRT WIGGLY SANDFLOWER	-CRIP
[Symbol]	1	ERI CAM	-	NL	GRISOLELLA CANFORMI	GREAT VALLEY SUN PLANT	-CRIP
[Symbol]	1	MCH OOD	-	L	MONARDELLA OODORATISSIMA	MOUNTAIN MONARDELLA	-CRIP
[Symbol]	1	MH RUS	-	L	MULLENBERGIA RISENS	DESERGRASS	-CRIP
[Symbol]	1	PEN HET	-	L	PENSTEMON HETEROPHYLLUS	FOOTHILL PENSTEMON	-CRIP
[Symbol]	150	SAL LEU	-	NL	SALVIA LEUCOPHYLLA	PURPLE SAGE	-CRIP
[Symbol]	1	SOL VEL	-	L	SOLIDAGO VELUTINA	CALIFORNIA GOLDENROD	-CRIP
[Symbol]	1	VER LAS	-	L	VERBENA LASIOSTACHYS	WESTERN VERVAIN VERBENA	-CRIP



PLANT NOTES

- CONTRACTOR TO BE RESPONSIBLE FOR COORDINATION WITH OTHER FOR LOCATION OF UNDERGROUND UTILITIES.
- PLANT LIST IS FOR CONVENIENCE OF CONTRACTOR. CONTRACTOR TO PREPARE AND LANDSCAPE ARCHITECT AND OWNER TO MAKE FINAL ADJUSTMENTS AS NECESSARY.
- CONTRACTOR TO BE RESPONSIBLE FOR FULL IRRIGATION COVERAGE OF ALL PLANTED AREA.
- IRRIGATION TO BE COORDINATED WITH PLANTING PLAN.
- ALL PLANTER AREAS SHALL BE AMENDED WITH 4 CU YDS. OF FOREST HENS MULCH AND 500 LBS. OF ORGANIC FERTILIZER PER 1000 SQ. FT. OF PLANTED AREA. PLANTER MIX TO BE 50% NATIVE MIX SOIL AND 50% PLANTER MIX ABOVE FOR ALL BACK FILL OF NEW PLANTS.
- PLANT MATERIAL MAY BE SUBJECT TO CHANGE AS PER OWNER OR LANDSCAPE ARCHITECT'S DISCRETION.
- ANY CLARIFICATION OR QUESTIONS ON PLANS, SPECIFICATIONS AND DETAILS SHOULD BE BROUGHT TO THE ATTENTION OF THE LANDSCAPE ARCHITECT IMMEDIATELY BEFORE PROCEEDING WITH WORK.
- ALL PLANTER AREAS TO BE TOP DRESSED WITH SHREPPED CEDAR BEDDING MULCH AT A MINIMUM DEPTH OF 3".
- ALL TREES SHALL BE PLANTED WITH DEEP ROOT BARRIERS (TRP) IF WITHIN 8 FT. OF PAVEMENT, PATIO, PARKING CURB ETC.
- ALL PLANTING TO HAVE GOMPER BASKETS FOR PROTECTION.

I AGREE TO COMPLY WITH THE REQUIREMENTS OF THE WATER EFFICIENT LANDSCAPE ORDINANCE AND SUBMIT A COMPLETE LANDSCAPE DOCUMENTATION PACKAGE.

[Signature] 05/15/23

HOLLISTER AVE. FRONTAGE PLANT LIST

Symb.	Qty.	Code	Size	Notes	Botanical Name	Common Name	Notes
TREES:							
[Symbol]	1	HES HAC	40'-60'	M	HEPEROCYPRIS MACROCARPA	MONTEREY CYPRESS	-CRIP
[Symbol]	1	HET EXC	30'-48"	L	METROSIDEROS EXCELSA	NEH ZEALAND GIBBINGAS TREE	-CRIP
[Symbol]	1	ACA SITE	30'-48"	L	ACACIA STENOPHYLLA	SAGESTRING ACACIA	-CRIP
SCREEN SHRUBS:							
[Symbol]	3	HET ARS	5g	NL	HEPEROCYPRIS ASENTIFOLIA	TOYON	-CRIP
[Symbol]	1	ILE AGI	5g	M	ILEX AQUIFOLIUM	ENGLISH HOLLY	-CRIP
[Symbol]	1	LAU NOR	15g	L	LAURUS NOBILIS 'SARATOGA'	SWEET BAY LAUREL # 9/2 c.c. screen hedge	-CRIP

Symb.	Qty.	Code	Size	Notes	Botanical Name	Common Name	Notes
[Symbol]	1	LON SB	5g	L	LONGICERA SUBPICATA	CHAPARRAL HONEYSUCKLE	-on fence -CRIP
[Symbol]	345	RHA VEN	5g	L	PHYRSTEGIA VENISTA	FLAME VINE	-on fence -CRIP
[Symbol]	1	RHA CRO	1g	NL	RHAMNUS CROCEA	REDSEEDY BUCKTHORN	-CRIP
SHRUBS & GROUND COVERS:							
[Symbol]	1	ACA COB	5g	L	ACACIA COBATA 'COBIN IT'	LITTLE RIVER HATTEL	-CRIP
[Symbol]	1	ACA RED	1g	NL	ACACIA REDOLENS 'LON BOY'	YARROW	-CRIP
[Symbol]	1	ARC VAR	1g	L	ARGENTOPHYLLUS VARIETIES	PACIFIC HET. EMBLAD CARPET	-CRIP
[Symbol]	1	ARC NG	1g	NL	ARGENTOPHYLLUS NIGRUM 'SUNSHINE'	ISLAND MANZANITA	-CRIP
[Symbol]	1	ARC HOR	5g	L	ARGENTOPHYLLUS HOWARDI 'MCHNT'	MANZANITA VAR.	-CRIP
[Symbol]	1	BAC FIL	5g	L	BACCHARIS PILLARS 'PINK PANT PEAS'	DWARF COYOTE BRUSH	-CRIP
[Symbol]	1	COR TOR	5g	L	CORNYLIA ASTRALIS 'TORBY DAZZLER'	TORBY DAZZLER GRASS PAH	-CRIP
[Symbol]	1	CIS VAR	5g	L	CISTIS VARIETIES	ROCKROSE	-CRIP
[Symbol]	1	CAR TIT	5g	L	CARRISIA 'TITLIT' # 'GREEN CARPET'	DWARF NATAL PLUM	-CRIP

Symb.	Qty.	Code	Size	Notes	Botanical Name	Common Name	Notes
[Symbol]	102	BOU GRA	1g	L	BOULEGIA GRACILIS 'BLONDE AMBITION'	BLONDE AMBITION BLUE GRAMA	-SPRAY
[Symbol]	1	BOU GRA	1g	L	BOULEGIA GRACILIS	BLUE GRAMA GRASS	-SPRAY
[Symbol]	1	CAR DRY	1g	L	CAREX DRYLLA	EUROPEAN GRAY SEDGE	-CRIP
[Symbol]	1	CAR PAN	1g	M	CAREX PANSA	SAND DUNE SEDGE	-CRIP / SPRAY
[Symbol]	1	CAR PRA	1g	M	CAREX PRAESARGILIS	CALIFORNIA FIELD SEDGE	-CRIP / SPRAY
[Symbol]	1	SES SPP	1g	M	SESLERIA SPECIES	GREENE HYBRID	-CRIP / SPRAY
[Symbol]	1	UC VERSE	1g	L	UC VERSE	BIRFPALOKRASS	-SPRAY
GRASSES - TALLER GROWING:							
[Symbol]	1	LOM PLA	1g	L	LOMANDRA PLATINUM BEAUTY'	PLATINUM BEAUTY LOMANDRA	-CRIP
[Symbol]	1	MES NOR	1g	M	MESQUITUS SENSIBILIS 'MORNING LIGHT'	ELIJA GRASS	-CRIP
[Symbol]	1	MH CAF	1g	L	MULLENBERGIA CAPILLARIS	HUREY ANN HULLY	-CRIP
[Symbol]	1	MH DUB	1g	L	MULLENBERGIA DUBIA	PEN MELT	-CRIP
[Symbol]	1	PER FAS	1g	M	PENNETUM 'FAIRY TAILS'	EVERGREEN POUNTAIN GRASS	-CRIP
[Symbol]	1	PER SPA	1g	L	PENNETUM SPATHULATUM	SLENDER VELDT GRASS	-SPRAY

PROGRESS PRINT NOT FOR CONSTRUCTION

The Designer warrants that the drawings are his best work and that he has not been negligent in the preparation of the drawings. The Designer warrants that the drawings are his best work and that he has not been negligent in the preparation of the drawings. The Designer warrants that the drawings are his best work and that he has not been negligent in the preparation of the drawings.



SITE MAP

SCALE: 1" = 400'-0"



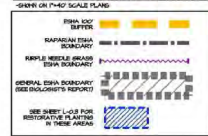
SANDPIPER GOLF CLUB -COMFORT STATION PRELIMINARY PLANTING PLAN

SCALE: 1" = 20'-0"

PLANT NOTES

1. CONTRACTOR TO BE RESPONSIBLE FOR COORDINATION WITH OTHERS FOR LOCATION OF UNDERGROUND UTILITIES.
2. PLANT LIST IS FOR CONVENIENCE OF CONTRACTOR. PLAN IS TO PREVAIL AND LANDSCAPE ARCHITECT AND OWNER TO MAKE FINAL ADJUSTMENTS AS NECESSARY.
3. CONTRACTOR TO BE RESPONSIBLE FOR FILL, IRRIGATION COVERAGE OF ALL PLANTED AREA.
4. IRRIGATION TO BE COORDINATED WITH PLANTING PLAN.
5. ALL PLANTER AREAS SHALL BE AMENDED WITH 4 CU YDS. OF FOREST HUMUS MULCH AND 20 LBS. OF GRO-POWER PLUS PER 1000 SQ. FT. OF PLANTED AREA. PLANTER MIX TO BE 50% NATIVE MIX SOIL AND 50% PLANTER MIX ABOVE FOR ALL BACK-FILL OF NEW PLANTS.
6. PLANT MATERIAL MAY BE SUBJECT TO CHANGE AS PER OWNER OR LANDSCAPE ARCHITECT'S DISCRETION.
7. ANY CLARIFICATION OR QUESTIONS ON PLANS, SPECIFICATIONS AND DETAILS SHOULD BE BROUGHT TO THE ATTENTION OF THE LANDSCAPE ARCHITECT IMMEDIATELY BEFORE PROCEEDING WITH WORK.
8. ALL PLANTER AREAS TO BE TOP DRESSED WITH SHREDED CEDAR REDWOOD MULCH AT A MINIMUM DEPTH OF 3".
9. ALL TREES SHALL BE PLANTED WITH DEEP ROOT BARRIERS (TRP), IF WITHIN 6FT. OF WALL, WALK, PATIO, PARKING CAR, ETC.
10. ALL PLANTING TO HAVE Gopher BASKETS FOR PROTECTION.

ESHA BOUNDARY LEGEND



I AGREE TO COMPLY WITH THE REQUIREMENTS OF THE WATER EFFICIENT LANDSCAPE ORDINANCE AND SUBMIT A COMPLETE LANDSCAPE DOCUMENTATION PACKAGE.

[Signature] 1-23

GOLF COURSE PLANT LIST

Qty	Code	Size	PLANT FACTORS	Botanical Name	Common Name	Notes
TREES:						
10	HES MAC	48"-60"	M	HEMEROCALLIDIS MACROCARPA	MONTREY CYPRESS	-to be confirmed -CRIP
10	HET EXC	36"-48"	L	HEGEDIEROS EXCELSA	NEW ZEALAND CHRISTMAS TREE	-CRIP
2	QUE ADR	48"-72"	L	QUERCUS AGRIFFOLIA	COAST LIVE OAK	-CRIP
2	QUE TOM	48"-60"	L	QUERCUS TOBIEHELLA	ISLAND OAK	-CRIP
GROUND COVER:						
10	BOU GRA	16"	L	BOUTELOXIA GRACILIS	BLUE GRAMA	-5-9 lbs. per area -SPRAY
10	HAR PES	16"	L	HARD FESCUE	HARD FESCUE	-SPRAY
10	FES OV1	16"	L	FESTUCA OVINA	SHEEPS FESCUE	-SPRAY
2	PAS PAL	16"	L	PASPALUM PLATINUM	SEA SHORE PASPALUM	-SPRAY (on way)
15	STI PUL	16"	L	STIPA PULCHRA	BUFFALOGRASS	-10-30 lbs. per area -SPRAY - 1 per m. or flag #20xLead 2-9 lbs. per 1000 sq ft
OTHER GRASSES:						
1	AGR PAL	16"	L	AGROSTIS PALLENS	NATIVE BIRD GRASS	-CRIP / SPRAY
4	CAR PRA	16"	N	CAREX PRACRAGILIS	CALIFORNIA FELD SEDGE	-CRIP / SPRAY
1	LOM PLA	1-50"	L	LOMANCHA PLATINUM BEAUTY	PLATINUM BEAUTY LOMANCHA	-CRIP

1	HES MCR	56"	M	HEGEDIEROS MONTREY LIGHT	ELI LILIA GRASS	-CRIP
1	HE DUB	1-56"	L	HEGEDIEROS DUBIA	PINE HULLY	-24 o.c.
1	PEN SPA	1-56"	L	PENSETUM SPATULOLATH	SLIMMER VELD GRASS	-24 o.c. -CRIP / SPRAY
1	ARI PUR	1-56"	VL	ARISTIDA PURPUREA	PURPLE THREE-AW	or 24" o.c. -CRIP / SPRAY
1	SES ALT	16"	M	SESELERIA ANTHRALIS	ANTHRA HORR GRASS	-CRIP
1	STI PUL	16"	L	STIPA PULCHRA	PURPLE NEEDLE GRASS	-3" o.c. -CRIP / SPRAY
LOW SHRUBS:						
1	BAC PL	1-56"	L	BACCHARIS PILLULARIS	PIGEON POINT DWARF COYOTE BRUSH	-CRIP -30x.
1	ARG PAC	1-56"	L	ARGENTOPHYLLIS PACIFIC HEST	option: "TWIN PEAKS" or "EMERALD CARPET"	-CRIP -30x.
1	ARG EDM	56"	L	ARGENTOPHYLLIS EDWARDSII	option: "EMERALD CARPET" - "TIGLARS" or "SANTA CRUZ" - "ISLAND MANZANITA"	-CRIP -30x.
1	ARG EDM	56"	L	ARGENTOPHYLLIS EDWARDSII	option: "EMERALD CARPET" - "TIGLARS" or "SANTA CRUZ" - "ISLAND MANZANITA"	-CRIP -50x.
SHRUBS:						
1	ACA COB	56"	L	ACACIA COGNATA	COGNIN IT	RIVER HATTEL
1	ARG HCN	56"	L	ARGENTOPHYLLIS HOWARD MEMINI	MANZANITA VAR.	-CRIP
1	BAC SPE	56"	L	BACCHARIS SPECIES	BACCHARIS SPECIES	-CRIP -30x.
1	CAR TUT	56"	L	CARRISSA TUTTLEI	CARRISSA TUTTLEI	-CRIP -40x.
1	CIS SUN	56"	L	CISTUS SUNSET	CISTUS SUNSET	-CRIP -60x.
1	COR AUS	56"	L	CORYMBIA AUSTRALIS	"ORBBAY" "DAZZLER"	-CRIP
1	HET ARI	156"	VL	HEGEDIEROS ARISTIFOLIA	"TOYON"	-CRIP
1	LAI NOB	56"	L	LAURUS NOBILIS	"SARATOGA"	option: "SARATOGA" - "SANTA CRUZ" - "ISLAND MANZANITA"

1	LOM XBS	56"	L	LOMANCHA XBS	FLAME VINE	-CRIP
1	LOM CAR	56"	L	LOMANCHA CAR	CAMPANULA HONEYBUCKLE	-CRIP
1	SAL LIL	56"	L	SALVIA LILICOPHYLLA	HARRY AWN MILLY	-CRIP
1	SAL LIL	56"	L	SALVIA LILICOPHYLLA	PURPLE SAGE	-CRIP
COASTAL EDGE:						
1	ATR LIL	1-56"	VL	ATRIPLLEX LILICOPHYLLA	QUILBUSH	-CRIP -60x.
1	ESC GAL	56"	VL	ESCHSCHOLZIA CALIFORNICA	CALIFORNIA POPPY	-BROADCAST
1	RHI RI	56"	VL	RHUS INTERSIFOLIA	LEONARDO BERRY	-CRIP -50x.
1	SAL MEL	56"	VL	SALVIA MELLIFERA	BLACK SAGE	-CRIP -60x.
1	STI PUL	16" plugs	VL	STIPA PULCHRA	PURPLE NEEDLEGRASS	-CRIP / SPRAY
RIPARIAN AREAS: -to be confirmed by project biologist						
1	ANE CAL	56"	M	ANEMOPSIS CALIFORNICA	YERBA MANGA	-CRIP / SPRAY
1	CAR PAL	56"	M	CAREX PRACRAGILIS	CALIFORNIA FELD SEDGE	-CRIP / SPRAY
1	BLB MAG	56"	M	BLECHNERIA MACROSTACHYA	COMMON SPICE RUSH	-CRIP / SPRAY
1	JUN PAT	56"	M	JUNCUS PATENS	CALIFORNIA GREY RUSH	-CRIP / SPRAY
1	JUN PRA	56"	M	JUNCUS PHAEOCEPHALUS	BROWN HEADED GREENISH RUSH	-CRIP / SPRAY
1	SAL SPA	56"	L	SALVIA SPATANGA	HUM-BIRD SAGE	-CRIP / SPRAY

The landscape architect shall be responsible for coordination of the work product herein between a professional engineer. If any conditions, situations, or discrepancies are found to exist within the work product, the landscape architect shall be promptly notified so that they may take the appropriate action to resolve the same. The landscape architect shall be responsible for the coordination of the work product herein between a professional engineer. If any conditions, situations, or discrepancies are found to exist within the work product, the landscape architect shall be promptly notified so that they may take the appropriate action to resolve the same.

REVISIONS

NO.	DATE	DESCRIPTION
1	05/15/23	ISSUED FOR PERMIT
2	05/15/23	ISSUED FOR PERMIT
3	05/15/23	ISSUED FOR PERMIT
4	05/15/23	ISSUED FOR PERMIT
5	05/15/23	ISSUED FOR PERMIT
6	05/15/23	ISSUED FOR PERMIT
7	05/15/23	ISSUED FOR PERMIT
8	05/15/23	ISSUED FOR PERMIT
9	05/15/23	ISSUED FOR PERMIT
10	05/15/23	ISSUED FOR PERMIT

EARTHFORM DESIGN

LANDSCAPE ARCHITECTURE & PLANNING

1000 S. GARDEN ST. SUITE 100, GARDEN CITY, CA 94015

SANDPIPER GOLF CLUB -COMFORT STATION PRELIMINARY PLANTING PLAN

SANDPIPER GOLF CLUB
7925 HOLLISTER AVE.
SOLETA, CA 95117

PROGRESS PRINT
NOT FOR CONSTRUCTION

DATE: 05/15/23
SCALE: 1" = 20'-0"
DRAWN: N.T.
CHECKED: SANDPIPER
DATE: 05/15/23

L-1.15

LIGHTING LEGEND

SYMBOL	QTY.	DESCRIPTION
	-	NEW TRANSFORMER - FX-PX-600H TRANSFORMER COLOR TO MATCH
	-	EXISTING J-BOX
	-	120V GFI, WATERPROOF OUTLET
	-	LANDSCAPE LIGHT SWITCHES
(A)	-	FARO - LOTUS 360 DARK GREY 16W BEACON LAMP
(B)	-	IN-LITE - DISC 12V
(C)	-	B-K LIGHTING - MC-SID-BLP, MC-MCKINLEY 6.5W 24" 30" HT. TO HANG GROUND & TREE STRAP
(D)	-	HAK LIGHTING - HL-LED100-30-65-6H PLASTER HALL LIGHTS 3.5W @ 24" 30" HT. TO HANG GROUND & BASE DRIVE, HALLS, STEPS
(E)	-	FX-LUMINAIRE - FB-2 LED-FB, 4W FLAT BLACK -GROUND MOUNTED
(F)	-	UNDER STRIP RAILING STRIP LIGHTS TO ILLUMINATE STEPS (T.S.D. BY ARCH) SWITCH CONDUIT ALL WORK UNDER PAVING TO SLEEVED.



(A) PATH LIGHTS
FARO - LOTUS 360 BEACON LAMP



(B) BOLLARD LIGHTS
IN-LITE - DISC 12V



(C) DOWN LIGHTING
B-K LIGHTING - MC-MCKINLEY H. TREE STRAP



(D) IN HALL LIGHTING
HAK LIGHTING - HL-LED100



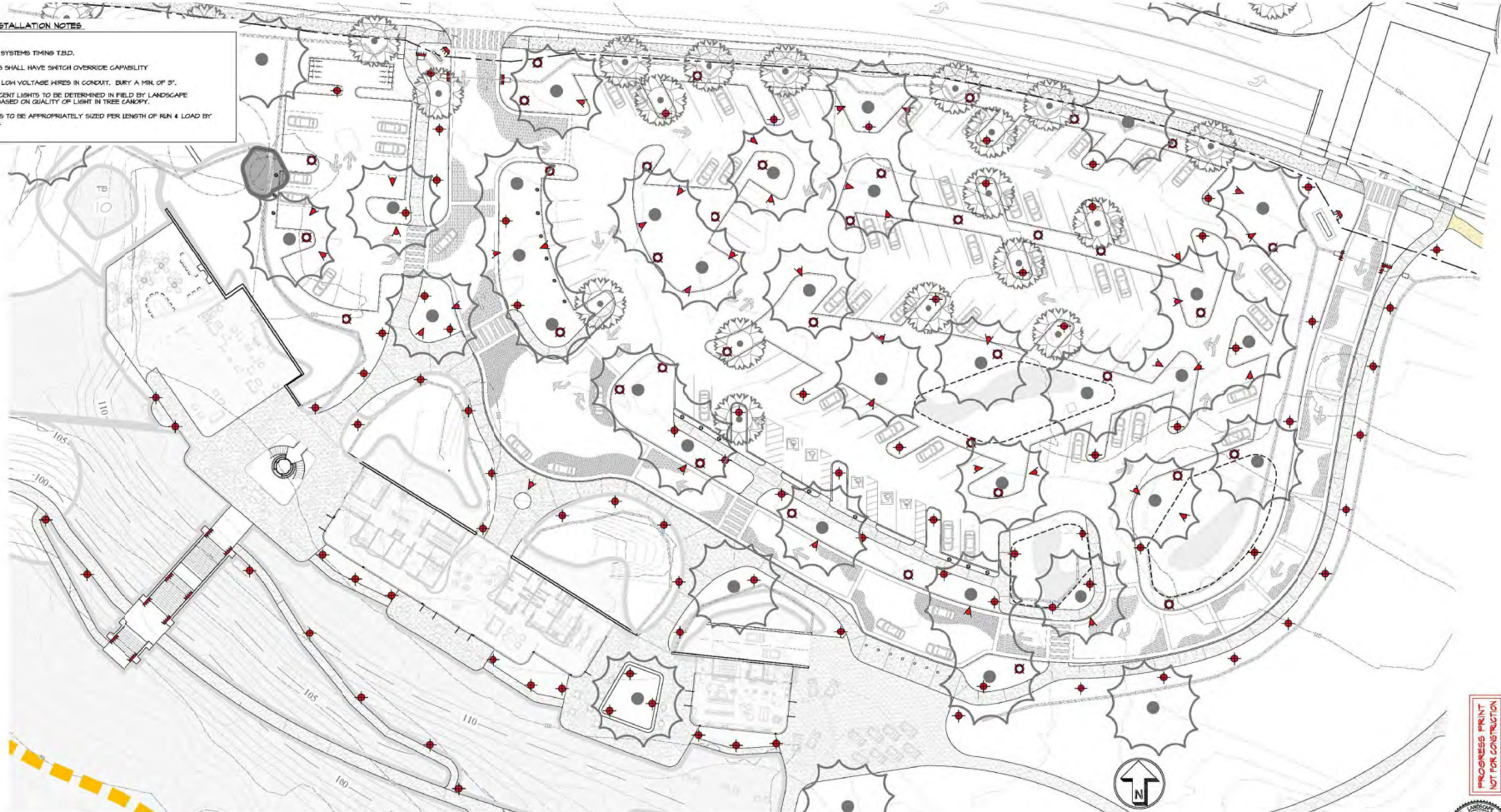
(E) SIGN LIGHTING @ ENTRY AND DIRECTIONAL SIGNAGE
FX-LUMINAIRE - FB_LED LIGHT



(F) UNDER STEP & HAND RAILS STRIP LIGHTS TO ILLUMINATE STEPS (T.S.D. BY ARCH)

LIGHTING INSTALLATION NOTES

- 1) PHOTO CELL SYSTEMS TIMING T.B.D.
- 2) ALL SYSTEMS SHALL HAVE SWITCH OVERRIDE CAPABILITY
- 3) LOCATE ALL LOW VOLTAGE WIRES IN CONDUIT. BURY A MIN. OF 3".
- 4) WELL OR ACENT LIGHTS TO BE DETERMINED IN FIELD BY LANDSCAPE ARCHITECT BASED ON QUALITY OF LIGHT IN TREE CANOPY.
- 5) ALL CABLE IS TO BE APPROPRIATELY SIZED PER LENGTH OF RUN & LOAD BY ELECTRICIAN.



SANDPIPER GOLF CLUB -CLUBHOUSE PRELIMINARY LIGHTING PLAN



NORTH

SCALE: 1" = 20'-0"

REVISIONS

NO.	DATE	DESCRIPTION
1		
2		
3		

EARTHFORM DESIGN
 10000 S. HOLLISTER AVE. SUITE 100
 GOLF LINKS, CA 94024
 TEL: (415) 352-1811
 FAX: (415) 352-1812

**SANDPIPER GOLF CLUB -CLUBHOUSE
 PRELIMINARY LIGHTING PLAN**

SANDPIPER GOLF CLUB
 7925 HOLLISTER AVE.
 SOLETA, CA 95117

**PROGRESS PRINT
 NOT FOR CONSTRUCTION**

DATE: 05/15/25
 SCALE: 1" = 20'-0"
 DRAWN: N.T.
 CHECKED: SANDPIPER
 TITLE: SANDPIPER
 SHEET: L-2

The landscape architect and the architect do not warrant or guarantee the accuracy and completeness of the work product herein beyond a reasonable duration. If any mistakes, omissions, or discrepancies are found to exist within the work product, the landscape architect shall be promptly notified so that he may have the opportunity to take remedial steps necessary to correct them, which he promptly shall do in accordance with the landscape architect's professional obligations. The landscape architect will not be responsible for the construction of any improvements, fixtures, or other work or the landscape architect or its construction. The landscape architect will not be responsible for the construction of any improvements, fixtures, or other work or the landscape architect or its construction. The landscape architect will not be responsible for the construction of any improvements, fixtures, or other work or the landscape architect or its construction.

LIGHTING LEGEND

SYMBOL	QTY.	DESCRIPTION
	-	NEW TRANSFORMER - FX-PX-600H TRANSFORMER COLOR TO MATCH
	-	EXISTING J-BOX
	-	120V 6P, WATERPROOF OUTLET
	-	LANDSCAPE LIGHT SWITCHES
(A)	-	FARO - LOTUS 350 DARK GREY 16W BEACON LAMP
(B)	-	IN-LITE - DISC 12V
(C)	-	B-K LIGHTING - MC-SID-BLP, MC-MCKINLEY 6.5w 50W BLACK 4" TREE STRAP
(D)	-	HAK LIGHTING - HL-LED100-30-65-6H PLASTER HALL LIGHTS 3.5w @ 24" SQ HT. TO HANG GROUND @ BASE DRIVE, HALLS, STEPS
(E)	-	FX-LIMINAIRE - FB-2 LED-FB, 4w FLAT BLACK -GROUND MOUNTED
(F)	-	UNDER STRIP RAILING STRIP LIGHTS TO ILLUMINATE STEPS (T.B.D. BY ARCH) SWITCH CONDUIT ALL WORK UNDER PAVING TO SLEEVED.



(A) PATH LIGHTS
FARO - LOTUS 350 BEACON LAMP



(B) BOLLARD LIGHTS
IN-LITE - DISC 12V



(C) DOWN LIGHTING
B-K LIGHTING - MC-MCKINLEY H. TREE STRAP



(D) IN HALL LIGHTING
HAK LIGHTING - HL-LED100



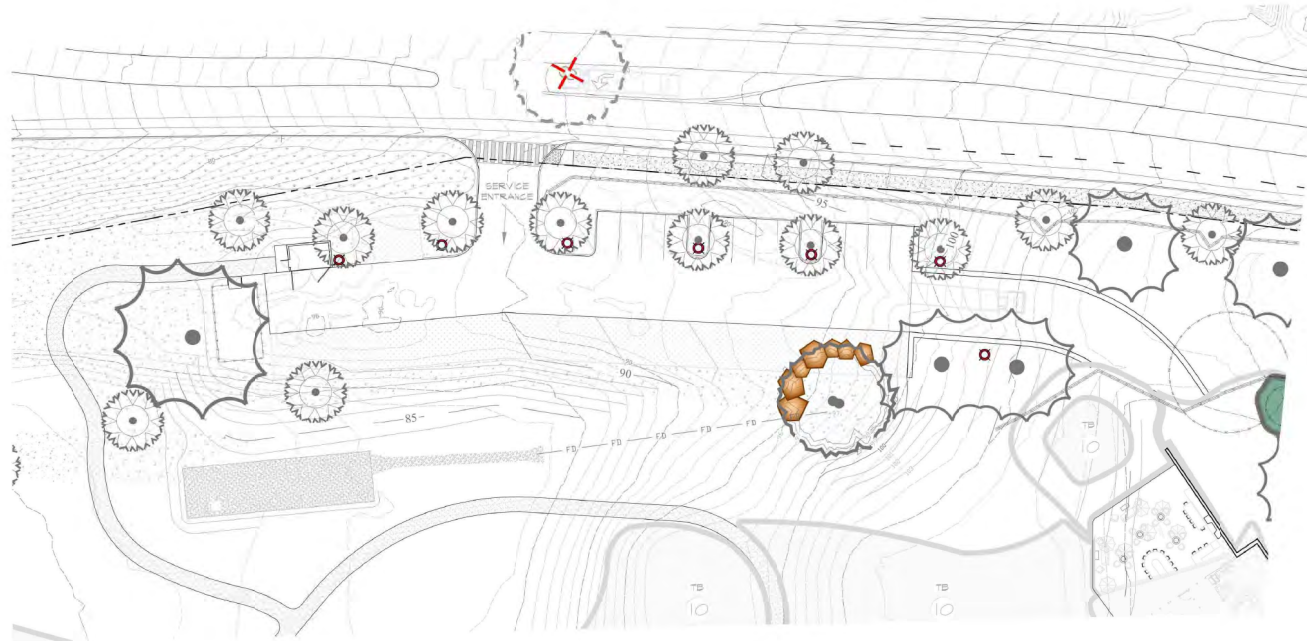
(E) SIGN LIGHTING @ ENTRY AND DIRECTIONAL SIGNAGE
FX-LIMINAIRE - FB LED LIGHT



(F) UNDER STEP 4" HAND RAILS STRIP LIGHTS TO ILLUMINATE STEPS (T.B.D. BY ARCH)

LIGHTING INSTALLATION NOTES

- 1) PHOTO CELL SYSTEMS TIMING T.B.D.
- 2) ALL SYSTEMS SHALL HAVE SWITCH OVERRIDE CAPABILITY
- 3) LOCATE ALL LOW VOLTAGE WIRES IN CONDUIT. BURY A MIN. OF 3".
- 4) WELL OR ACCENT LIGHTS TO BE DETERMINED IN FIELD BY LANDSCAPE ARCHITECT BASED ON QUALITY OF LIGHT IN TREE CANOPY.
- 5) ALL CABLE IS TO BE APPROPRIATELY SIZED PER LENGTH OF RUN & LOAD BY ELECTRICIAN.



SANDPIPER GOLF CLUB -WEST PARKING LOT PRELIMINARY LIGHTING PLAN



NORTH

SCALE: 1" = 20'-0"

REVISIONS	BY

EARTHFORM DESIGN
 10000 S. HOLLISTER AVE. SUITE 100
 GOLETA, CA 93040
 TEL: (805) 965-2000 FAX: (805) 965-2004

**SANDPIPER GOLF CLUB -WEST PARKING LOT
 PRELIMINARY LIGHTING PLAN**

SANDPIPER GOLF CLUB
 7925 HOLLISTER AVE.
 GOLETA, CA 93117

PROGRESS PRINT
 NOT FOR CONSTRUCTION



DATE	05/15/23
SCALE	1" = 20'-0"
DRAWN BY	N.T.
CHECKED BY	SANDPIPER
DATE	
SCALE	1" = 20'-0"
BY	

The landscape architect and/or consultant do not warrant or guarantee the accuracy and completeness of this work product, herein beyond a reasonable expectation. If any mistakes, omissions, or discrepancies are found in error within the work product, the landscape architect shall be promptly notified so that he may have the opportunity to take whatever steps necessary to correct them. Failure to promptly notify the landscape architect of such mistakes shall constitute the landscape architect's acceptance of the work product as presented. The landscape architect will not be responsible for the construction of any improvements, fixtures, or other work shown on the landscape and/or site plan, or the installation, maintenance, or repair of any improvements or fixtures shown on the landscape and/or site plan. The landscape architect will not be responsible for the construction of any improvements or fixtures shown on the landscape and/or site plan. The landscape architect will not be responsible for the construction of any improvements or fixtures shown on the landscape and/or site plan. The landscape architect will not be responsible for the construction of any improvements or fixtures shown on the landscape and/or site plan.

LIGHTING LEGEND

SYMBOL	QTY.	DESCRIPTION
	-	NEW TRANSFORMER - FX-PX-600H TRANSFORMER COLOR TO MATCH
	-	EXISTING J-BOX
	-	120V 6P, WATERPROOF OUTLET
	-	LANDSCAPE LIGHT SWITCHES
(A)	-	FARO - LOTUS 350 DARK GREY 18W BEACON LAMP
(B)	-	IN-LITE - DISC 12V
(C)	-	B-K LIGHTING - MC-SID-5LP, MC-MCKINLEY 6.5W 5A1N BLACK W. TREE STRAP
(D)	-	HAK LIGHTING - HL-LED100-30-65-6H PLASTER HALL LIGHTS 3.5W @ 24" SQ HT. TO HANG GROUND @ BASE DRIVE, HALLS, STEPS
(E)	-	FX-LIMINAIRE - FB-2 LED-FB, 4w FLAT BLACK -GROUND MOUNTED
(F)	-	UNDER STRIP RAILING STRIP LIGHTS TO ILLUMINATE STEPS (T.S.D. BY ARCH) SWITCH CONDUIT ALL WORK UNDER PAVING TO SLEEVED.

LIGHTING INSTALLATION NOTES

- 1) PHOTO CELL SYSTEMS TIMING T.B.D.
- 2) ALL SYSTEMS SHALL HAVE SWITCH OVERRIDE CAPABILITY
- 3) LOCATE ALL LOW VOLTAGE WIRES IN CONDUIT, BURY A MIN. OF 3".
- 4) HELL OR ACCENT LIGHTS TO BE DETERMINED IN FIELD BY LANDSCAPE ARCHITECT BASED ON QUALITY OF LIGHT IN TREE CANOPY.
- 5) ALL CABLE IS TO BE APPROPRIATELY SIZED PER LENGTH OF RUN & LOAD BY ELECTRICIAN.



(A) PATH LIGHTS
FARO - LOTUS 350 BEACON LAMP



(B) BOLLARD LIGHTS
IN-LITE - DISC 12V



(C) DOWN LIGHTING
B-K LIGHTING - MC-MCKINLEY W. TREE STRAP



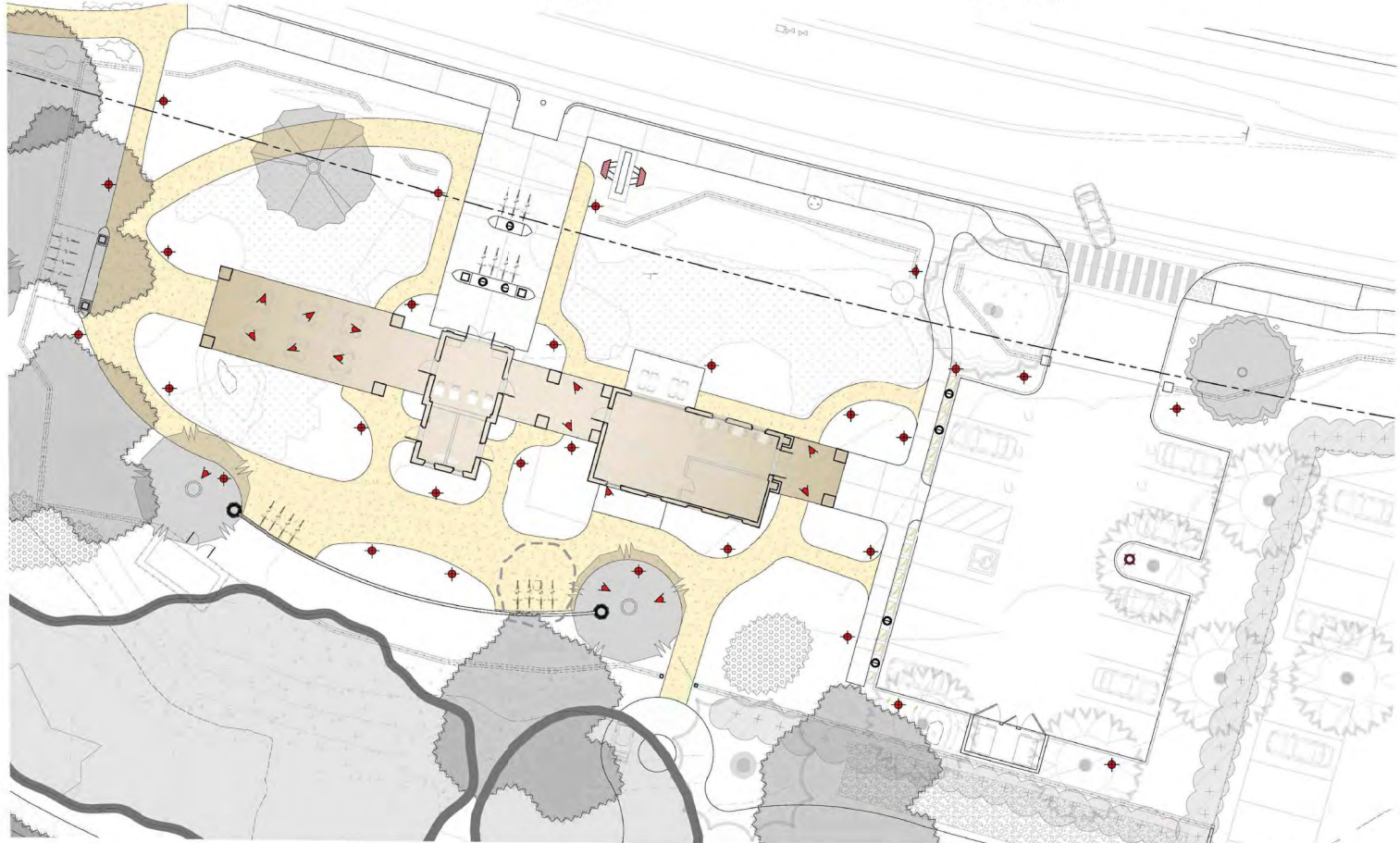
(D) IN HALL LIGHTING
HAK LIGHTING - HL-LED100



(E) SIGN LIGHTING @ ENTRY AND DIRECTIONAL SIGNAGE
FX-LIMINAIRE - FB_LED LIGHT



(F) UNDER STEP & HAND RAILS STRIP LIGHTS TO ILLUMINATE STEPS (T.S.D. BY ARCH)



NORTH

SCALE: 1" = 10'-0"

SANDPIPER GOLF CLUB - BARNSDALL PRELIMINARY LIGHTING PLAN

REVISIONS

NO.	DATE	DESCRIPTION
1	05/15/25	ISSUE FOR PERMIT

EARTHFORM DESIGN INC.
 1000 S. GARDEN AVENUE, SUITE 100
 GARDEN GROVE, CA 92640
 TEL: (714) 261-1111
 WWW.EARTHFORMDESIGN.COM

**SANDPIPER GOLF CLUB - BARNSDALL
 PRELIMINARY LIGHTING PLAN**

SANDPIPER GOLF CLUB
 7925 HOLLISTER AVE.
 SOLETA, CA 95117

DATE: 05/15/25
 SCALE: 1" = 10'-0"
 DRAWN: N.T.
 CHECKED: SANDPIPER
 PROJECT NO: 1-22

**PROGRESS PRINT
 NOT FOR CONSTRUCTION**

The landscape architect and the architect do not warrant or guarantee the accuracy and completeness of the work product herein beyond a reasonable duration. If any mistakes, omissions or discrepancies are found in error within the work product, the landscape architect shall be promptly notified in order to see how the architect or landscape architect may be able to correct the error. The landscape architect will not be responsible for the construction of any improvements, fixtures, or structures shown on the landscape architect's drawings. The landscape architect will not be responsible for the construction of any improvements, fixtures, or structures shown on the landscape architect's drawings. The landscape architect will not be responsible for the construction of any improvements, fixtures, or structures shown on the landscape architect's drawings. The landscape architect will not be responsible for the construction of any improvements, fixtures, or structures shown on the landscape architect's drawings.

LIGHTING LEGEND

SYMBOL	QTY.	DESCRIPTION
	-	NEW TRANSFORMER - FX-FX-6004 TRANSFORMER COLOR TO MATCH
	-	EXISTING J-BOX
	-	120V GFI, WATERPROOF OUTLET
	-	LANDSCAPE LIGHT SWITCHES
(A)	-	FARO - LOTUS 650 DARK GREY 18W BEACON LAMP
(B)	-	IN-LITE - DISC 12V
(C)	-	DOWN LIGHTING - MC-512-RLP, MC-MCKINLEY 6.5W SATIN BLACK W. TREE STRAP
(D)	-	HAK LIGHTING - HL-LED100-302-6P-6P PLASTER WALL LIGHTS 3.5W @ 24"-30" HT. TO WASH GROUND @ BASE DRIVE, WALLS, STEPS
(E)	-	FX LUMINAIRE - FX-B LED-FIB, 4W FLAT BLACK - GROUND MOUNTED
(F)	-	UNDER STRIP RAILING STRIP LIGHTS TO ILLUMINATE STEPS (T.B.D. BY ARCU)
	-	SWITCH CONDUIT
	-	ALL WORK UNDER PAVING TO SLEEVED.

LIGHTING INSTALLATION NOTES

- 1) PHOTO CELL SYSTEMS TIMING T.B.D.
- 2) ALL SYSTEMS SHALL HAVE SWITCH OVERRIDE CAPABILITY
- 3) LOCATE ALL LOW VOLTAGE WIRES IN CONDUIT. BURY A MIN. OF 3".
- 4) HELL OR ACCENT LIGHTS TO BE DETERMINED IN FIELD BY LANDSCAPE ARCHITECT BASED ON QUALITY OF LIGHT IN TREE CANOPY.
- 5) ALL CABLE IS TO BE APPROPRIATELY SIZED PER LENGTH OF RUN & LOAD BY ELECTRICIAN.



(A) PATH LIGHTS
FARO - LOTUS 650 BEACON LAMP



(B) BOLLARD LIGHTS
IN-LITE - DISC 12V



(C) DOWN LIGHTING
DOWN LIGHTING - MC-MCKINLEY W. TREE STRAP



(D) IN WALL LIGHTING
HAK LIGHTING - HL-LED100



(E) SIGN LIGHTING @ ENTRY AND DIRECTIONAL SIGNAGE
FX-LUMINAIRE - FX-B LED LIGHT



(F) UNDER STEP & HAND RAILS STRIP LIGHTS TO ILLUMINATE STEPS (T.B.D. BY ARCU)



SANDPIPER GOLF CLUB - MAINTENANCE YARD PRELIMINARY LIGHTING PLAN



NORTH

SCALE 1" = 20'-0"

PROGRESS PRINT
NOT FOR CONSTRUCTION



The landscape architect and/or architect shall not be responsible for the accuracy and completeness of the work product herein beyond a reasonable doubt. If any mistakes, omissions, or discrepancies are found in any work product, the landscape architect shall be promptly notified so that he may have the opportunity to take remedial steps necessary to correct them. Failure to promptly notify the landscape architect of such mistakes, omissions, or discrepancies shall constitute an acceptance of the work product as shown and the landscape architect shall be held responsible for the same. The landscape architect shall not be held responsible for the accuracy and completeness of the work product herein beyond a reasonable doubt. If any mistakes, omissions, or discrepancies are found in any work product, the landscape architect shall be promptly notified so that he may have the opportunity to take remedial steps necessary to correct them. Failure to promptly notify the landscape architect of such mistakes, omissions, or discrepancies shall constitute an acceptance of the work product as shown and the landscape architect shall be held responsible for the same.

EARTHFORM DESIGN
LANDSCAPE ARCHITECTS
1000 S. GARDEN ST. SUITE 100
SANTA ANA, CA 92705
(714) 261-2000

**SANDPIPER GOLF CLUB - MAINTENANCE YARD
PRELIMINARY LIGHTING PLAN**

**SANDPIPER GOLF CLUB
7925 HOLLISTER AVE.
SOLETA, CA 95117**

REVISIONS	BY	DATE

DATE: 05/15/23
SCALE: 1" = 20'-0"
DRAWN: N.T.
PROJECT: SANDPIPER
SHEET NO: 1-23

