





© 2002 Winick Architects  
All rights reserved. No part of this publication may be reproduced without the prior written permission of Winick Architects.

02/00/02



6 CLUB HOUSE NORTH VIEW



5 CLUB HOUSE NORTH-EAST VIEW



4 CLUB HOUSE SOUTH-EAST VIEW



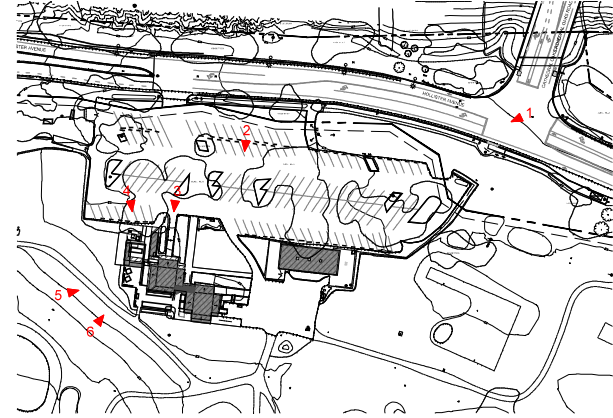
2 PARKING LOT SOUTH VIEW



3 CLUB HOUSE SOUTH VIEW



1 SITE SOUTH-WEST VIEW



A CLUB HOUSE IMAGE KEY PLAN



NO.	REVISION	DATE
1	CONCEPTUAL DESIGN	7/20/02
2	CONCEPTUAL DESIGN	10/24/02
3	CONCEPTUAL DESIGN	10/29/02
4	CONCEPTUAL DESIGN	11/20/02
5	CONCEPTUAL DESIGN	12/10/02
6	CONCEPTUAL DESIGN	12/10/02

**SANDPIPER  
GOLF CLUB**

7925 HOLLIETER AVE.  
GOLETA, CA. 93117

PROJECT NO. 33033

SCALE DATE DRAWN BY

AS NOTED 11 OCT 2002 CW

**EXISTING  
CLUB HOUSE  
CONTEXT PHOTOS**

02/00/02



6 CLUB HOUSE BASEMENT NORTH ENTRANCE



5 CART STORAGE WEST VIEW



3 CLUB HOUSE BASEMENT EAST ENTRANCE



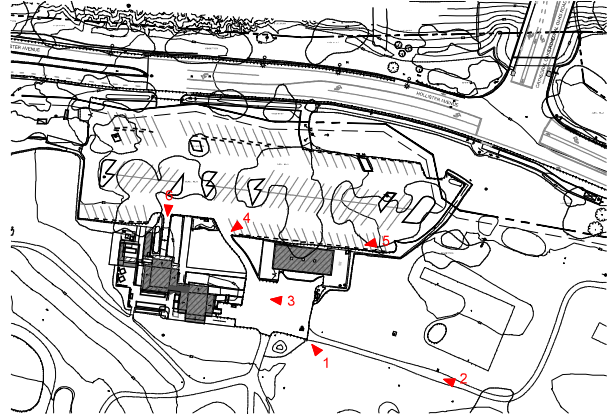
4 CLUB HOUSE WEST VIEW



2 WEST VIEW



1 CLUB HOUSE NORTH-EAST VIEW



A CLUB HOUSE IMAGE KEY PLAN

PROJECT NO. 33003  
N.T.S.



CONTRACT

NO.	REVISION	DATE
1	CONCEPT DESIGN	7/24/2003
2	CONCEPT DESIGN	10/24/2003
3	CONCEPT DESIGN	10/29/2003
4	CONCEPT DESIGN	11/24/2003
5	CONCEPT DESIGN	12/10/2003



3 COMFORT STATION NORTH VIEW



2 COMFORT STATION SOUTH VIEW



1 COMFORT STATION WEST VIEW (EAST VIEW SIMILAR)



A COMFORT STATION IMAGE KEY PLAN



NO.	REVISION	DATE
1	CONCEPT DESIGN	7/20/2023
2	CONCEPT DESIGN	12/20/2023
3	PRELIMINARY CONCEPT	02/09/2024
4	PRELIMINARY CONCEPT	03/20/2024
5	CONCEPT DESIGN	07/20/2024

**SANDPIPER  
GOLF CLUB**

7925 HOLLETER AVE.  
GOLETA, CA. 93117

PROJECT NO: 33003

SCALE DATE DRAWN BY

AS SHOWN 11 OCT 2023 CW

**EXISTING  
COMFORT STATION  
CONTEXT PHOTOS**

DRAWING NO:



© 2003 Winick Architects  
All rights reserved. No part of this publication may be reproduced, stored in a retrieval system, or transmitted, in any form or by any means, electronic, mechanical, photocopying, recording, or by any information storage and retrieval system, without the prior written permission of Winick Architects.

CONTRACT



8 BARNSDALL NORTH VIEW (FROM GOLF COURSE)



7 BARNSDALL EAST SIGNAGE POST



6 BARNSDALL WEST SIGNAGE POST



5 BARNSDALL NORTH-WEST VIEW



4 BARNSDALL WEST VIEW



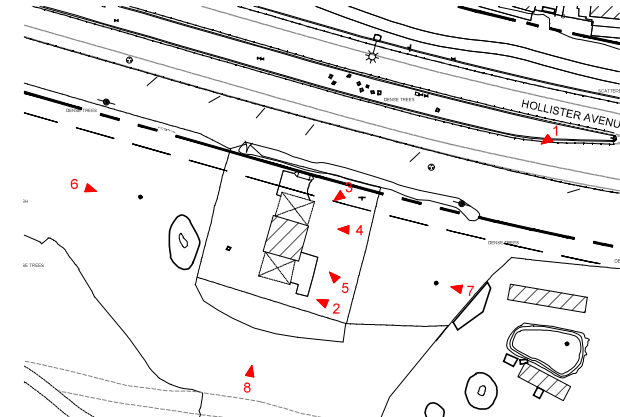
3 BARNSDALL SOUTH-WEST VIEW



2 BARNSDALL (REAR) WEST VIEW



1 BARNSDALL SOUTH-WEST VIEW



A BARNSDALL IMAGE KEY PLAN



NO.	REVISION	DATE
1	CONCEPT DESIGN	10.01.2023
2	CONCEPT DESIGN	10.01.2023
3	CONCEPT DESIGN	10.01.2023
4	CONCEPT DESIGN	10.01.2023

**SANDPIPER  
GOLF CLUB**

7925 HOLLISTER AVE.  
GOLETA, CA. 93117

PROJECT NO: 33003  
SCALE: 1" = 32' 0"

DATE: 11 OCT 2023  
DRAWN BY: CUL  
PROJECT NO: 33003

EXISTING BARNSDALL CONTEXT PHOTOS

DATE: 11 OCT 2023



© 2023 Winick Architects, Inc. All rights reserved. No part of this document may be reproduced without the written permission of Winick Architects, Inc.

CONTRACT



6 SMALL STORAGE / STAFF WEST VIEW



5 SMALL STORAGE / STAFF SOUTH-WEST VIEW



4 SMALL STORAGE / STAFF NORTH-WEST VIEW



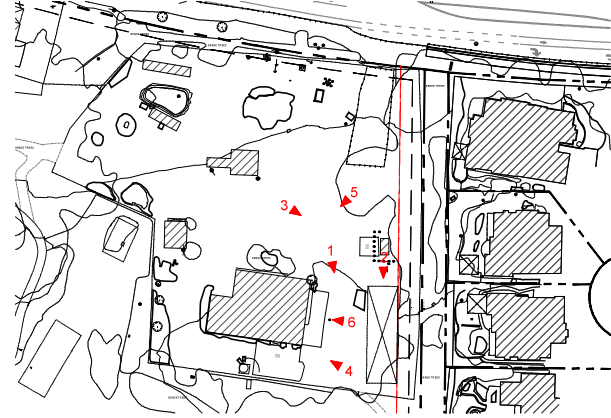
3 FUEL STATION EAST VIEW



2 LARGE STORAGE SOUTH VIEW



1 LARGE STORAGE SOUTH-EAST VIEW



A MAINTENANCE YARD IMAGE KEY PLAN



NO.	REVISION	DATE
1	CONCEPT DESIGN	10.01.2023
2	CONCEPT DESIGN	10.01.2023
3	CONCEPT DESIGN	10.01.2023
4	CONCEPT DESIGN	10.01.2023

**SANDPIPER  
GOLF CLUB**

7925 HOLLETER AVE.  
GOLETA, CA. 93117

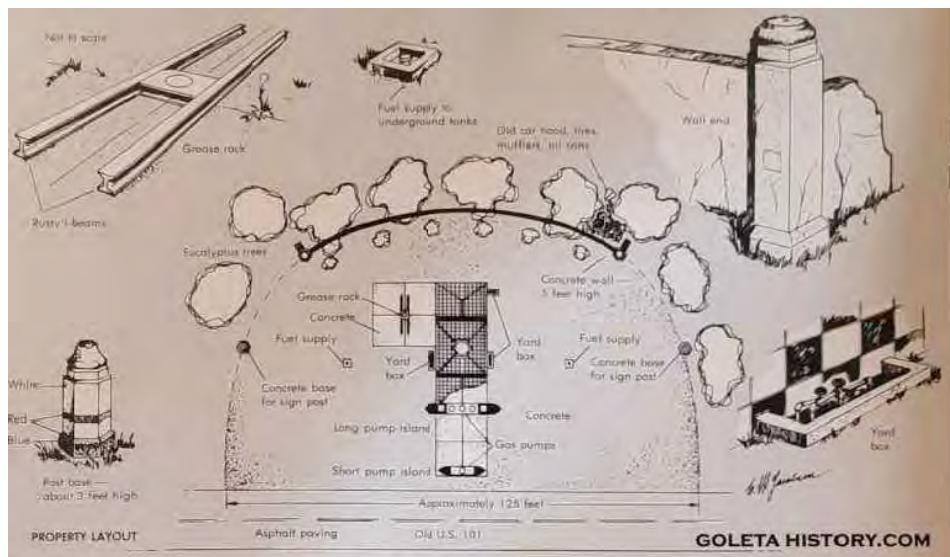
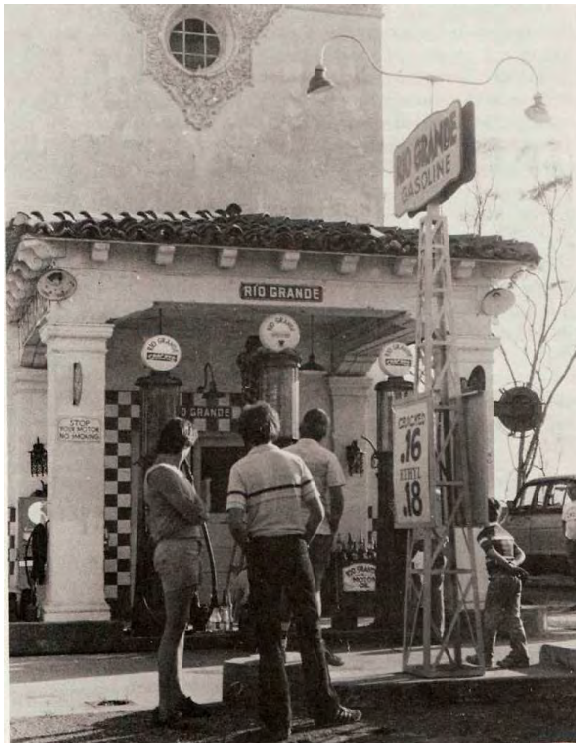
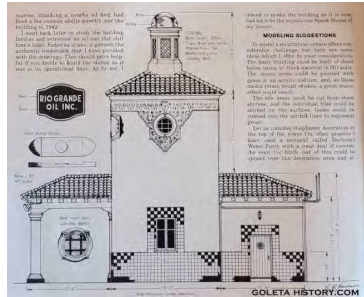
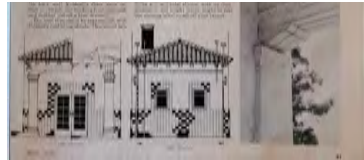
PROJECT NO: 33003

SCALE: DATE: DRAWN BY:

AS NOTED: 11 OCT 2023: CW

**EXISTING  
MAINTENANCE YARD  
CONTEXT PHOTOS**

ISSUED BY:



NO.	REV.	DATE	BY
1	CONTRACT REVISION	7/26/2011	WINICK
2	CONTRACT REVISION	10/26/2011	WINICK
3	CONTRACT REVISION	02/07/2012	WINICK
4	CONTRACT REVISION	03/26/2012	WINICK

PROJECT NO.	DATE	DRAWN BY
33003	10/26/2011	WINICK



© 2014 Winick Architects. All rights reserved. No part of this document may be reproduced without the written permission of Winick Architects.

**WEST ELEVATION**

**NORTH ELEVATION**

**SECTION**

**EAST ELEVATION**

**SOUTH ELEVATION**

**PLAN**

**BAIRDALL OIL CO. BIG GRANDE OIL CO. FILLING STATION**  
 ELLWOOD, CALIFORNIA

PLAN, ELEVATIONS & SECTION  
 SCALE: 1/4" = 1'-0" TO ONE FOOT  
 DATE: August 4, 2013

PROJECT NO: 3303

DATE: 10.09.2014

SCALE: 1/4" = 1'-0"

DATE: 10.09.2014

SCALE: 1/4" = 1'-0"

NO.	DATE	DESCRIPTION	BY
1	10.09.2013	CONCEPTUAL DESIGN	AW
2	10.09.2013	CONCEPTUAL DESIGN	AW
3	10.09.2013	CONCEPTUAL DESIGN	AW
4	10.09.2013	CONCEPTUAL DESIGN	AW

**SANDPIPER GOLF CLUB**

7925 HOLLETER AVE.  
 GOLETA, CA 93117

**BARNSDALL HISTORICAL REFERENCE**

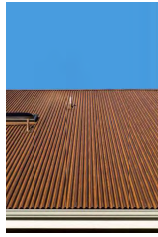


**8-4 LIGHTING - AIRFIT LED**  
 18" H x 4" DIA. x 4" DIA. LED  
 150-200 WATTED  
 120V LINE VOLTAGE  
 3000K COLOR TEMPERATURE  
 18" BURNING PROTECTIVE



**P-100 GLACIER WHITE**  
 Base 100

GLACIER WHITE EXTERIOR STUCCO



CORRUGATED COPPER STEEL ROOF



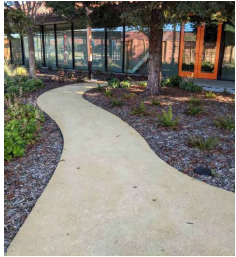
BLACK ALUMINUM DOOR AND WINDOW FRAMES

**8 MAINT. ARCHITECTURAL LIGHTING**  
 REFER TO SHEETS A\_M-101 / A\_M-200'S  
 FOR WALL SCONCE LOCATIONS

SCALE: N.T.S.

**7 MAINT. YARD MATERIALS**

SCALE: N.T.S.



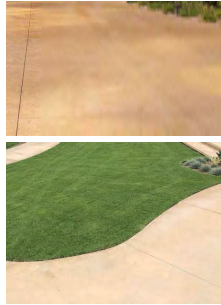
**6 GRANITECRETE FINISHED SURFACE**

SCALE: N.T.S.



**5 CEDAR SPLIT RAIL FENCE**

SCALE: N.T.S.



**4 SAND FINISHED COLORED CONCRETE**

SCALE: N.T.S.



VERTICAL GRAIN DOUGLAS FIR (VGFDF)  
 LIGHT GRAY STAIN REFERENCE

VERTICAL GRAIN DOUGLAS FIR (VGFDF)  
 TRELLIS STRUCTURE (BEAMS, RAFTER  
 TAILS AND CORBELS) TO MATCH  
 BARNSDALL EXISTING W/ LIGHT GRAY  
 STAIN

STUCCO TO MATCH BARNSDALL

DECORATIVE COLORED PLASTER  
 TO MATCH BARNSDALL DECORATIVE  
 PLASTER FRIEZE



VERTICAL GRAIN DOUGLAS FIR (VGFDF)  
 NEW TRELLIS WOOD LIGHT GREY PAINTED  
 COLUMN. SEE AND DETAILS TO MATCH  
 BARNSDALL EXISTING PLASTER COLUMNS.

NEW ALUMINUM WINDOWS TO MATCH  
 BARNSDALL EXISTING WINDOWS AND  
 DOORS. (COLORS TO MATCH)

**2 RIO GRANDE CAFE MATERIALS**

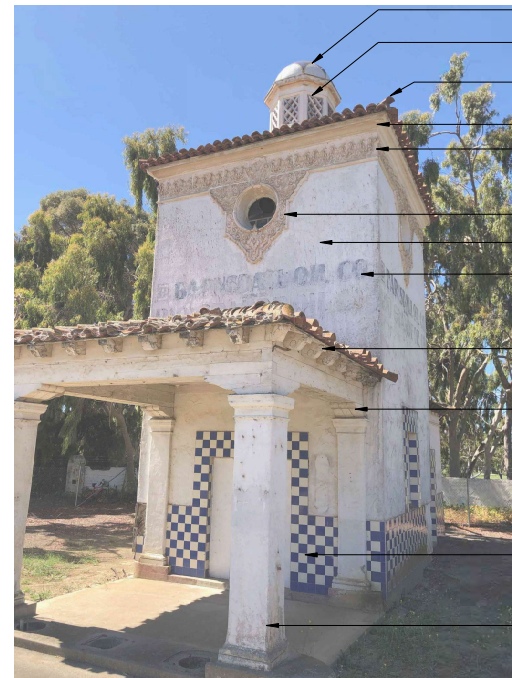
SCALE: N.T.S.



**THOMAS O'BRYEN ACADEMY**  
 18" LAMP ARMS W/ 16" TILTED SHADE W/ ALL SCIENCE  
 LOW VOLTAGE OPTION  
 3000K COLOR TEMPERATURE  
 18" BURNING PROTECTIVE

**3 BARNSDALL ARCHITECTURAL LIGHTING**  
 REFER TO SHEET A\_B-101 BARNSDALL / CAFE FIRST FLOOR  
 FOR ARCHITECTURAL LIGHTING  
 REFER TO SHEET L-2 FOR SITE AND LANDSCAPE LIGHTING

SCALE: N.T.S.



- MOSAIC TILE (WHITE, "GOLD" AND BLUE)
- WOOD / PLASTER GRILL (TO BE DETERMINED)
- SPANISH CLAY ROOF TILE
- MOLDINGS
- DECORATIVE PLASTER FRIEZE
- DECORATIVE PLASTER DETAILS
- STUCCO
- WALL SIGNAGE
- PAINTED WOOD TIMBERS AND RAFTER TAILS
- PAINTED WOOD CORBELS
- EXTERIOR WHITE AND BLUE TILE
- STUCCO COLUMNS AND DETAILS

**1 BARNSDALL (RESTORATION) MATERIALS**

SCALE: N.T.S.

**BARNSDALL MATERIALS NOTE**

ALL EXTERIOR MATERIAL SELECTIONS SHALL BE MADE PER HISTORIC PRESERVATIONET RECOMMENDATION TO REPLACE ORIGINAL MATERIALS, SUCH AS: STUCCO, WOOD, ROOF TILE, DECORATIVE TILES, MOSAIC TILES, PAINT, DECORATIVE PLASTER, DETAILS, MOLDINGS, ETC.

**RIO GRANDE CAFE / TRELLIS MATERIALS NOTE**

ALL EXTERIOR MATERIAL SELECTIONS TO MATCH BARNSDALL HISTORIC PRESERVATIONET RECOMMENDATION TO REPLACE ORIGINAL MATERIALS



NO.	REVISION	DATE
1	CONCEPT DESIGN	7/24/2024
2	CONCEPT DESIGN	10/24/2024
3	PRELIMINARY CONCEPT	10/24/2024
4	CONCEPT	10/24/2024

**SANDPIPER GOLF CLUB**

7925 HOLLISTER AVE.  
 GOLETA, CA. 93117

PROJECT NO: 33003  
 SCALE: 1/8" = 1'-0"  
 DATE: 10/24/2024  
 DRAWN BY: CW

**BARNSDALL AND MAINTENANCE YARD MATERIALS / LIGHTING**

PROJECT NO:



© 2014 Winick Architects. All rights reserved. No part of this document may be reproduced without written permission from Winick Architects.

CONTRACT



**AURO-RABBIT - TELESIDE**  
8" WALL LIGHT - DOUBLE END  
5" W. LIGHT  
LOW LUMEN OUTPUT  
2700K COLOR TEMPERATURE  
FINISH: NATURAL BRASS



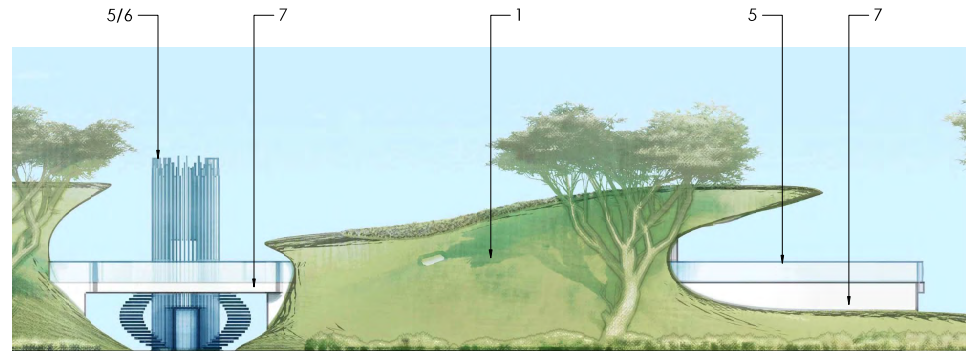
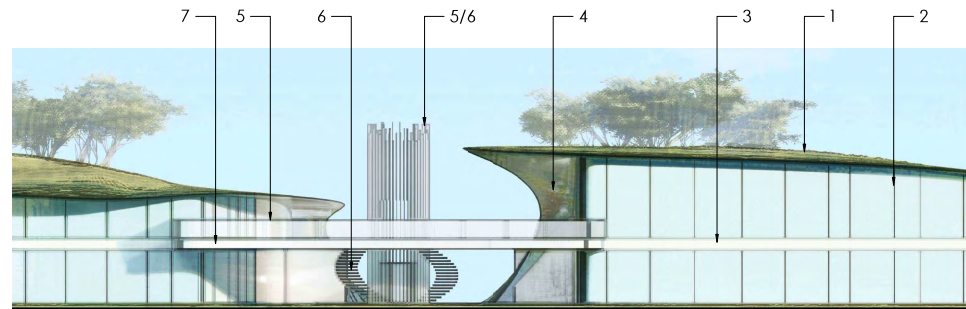
**AURO-RABBIT - MIDSPAN**  
2" STEP LIGHT - ROUNDED FACEPLATE  
5" W. LIGHT  
LOW LUMEN OUTPUT  
2700K COLOR TEMPERATURE  
FINISH: NATURAL BRASS



**AURO-RABBIT - MIDSPAN**  
2" STEP LIGHT - ROUNDED FACEPLATE  
5" W. LIGHT  
LOW LUMEN OUTPUT  
2700K COLOR TEMPERATURE  
FINISH: NATURAL BRASS

2 CLUB HOUSE ARCHITECTURAL LIGHTING

SCALE: N.T.S.



NO.	REVISION	DATE
1	CONCEPT DEVELOPMENT	7/24/2014
2	CONCEPT DEVELOPMENT	10/24/2014
3	PRELIMINARY CONCEPT	10/24/2014
4	CONCEPT	11/24/2014

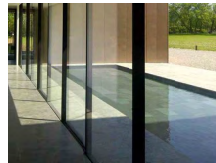
5 - LOW IRON GLASS  
(WINDOWS / DOORS,  
GUARDS / ELEVATOR ENCL.)



1 - GRASS ROOF



2 - BLACK STEEL FRAMES / OR  
DARK ALUMINUM



6 - STAINLESS STEEL



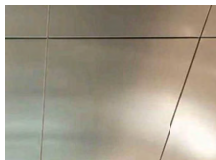
3 - BACK-PAINTED (WHITE) / OR  
FROSTED SPANDREL GLASS



7 - FINE TROWELED EXTERIOR  
STUCCO (WHITE)



4 - (TEXTURED) STAINLESS STEEL  
PANEL CEILING / UNDER-ROOF



1 CLUB HOUSE MATERIALS

SCALE: N.T.S.

**SANDPIPER  
GOLF CLUB**

7925 HOLLISTER AVE.  
GOLETA, CA. 93117

PROJECT NO: 33003

SCALE DATE DRAWN BY  
AS NOTED 10.09.2014 CW

**CLUB HOUSE /  
COMFORT STATION  
MATERIALS / LIGHTING**

PROJECT NO:

**T-009.1**



DATE: 11/15/2023  
 DRAWN BY: JACOB  
 CHECKED BY: JACOB  
 PROJECT NO: 23-0003

### LEGEND

	GOLF COURSE		RESTAURANT		LOUNGE / TERRACE
	PRO SHOP		RESTAURANT STORAGE / B.O.H.		CONFERENCE
	PRO SHOP STORAGE		GRAB N GO		CIRCULATION
	OFFICE		NOT INCLUDED / NOT APPLICABLE		

	PARKING TYPE	CLUB HOUSE	BARNSDALL	MAINTENANCE	SUBTOTAL PER TYPE	COMMENTS
VEHICLE	VEHICLE ADA / HANDICAP PARKING	0	1	1	0	3 ADA parking here (EV Charging Station @ Club House and 1 @ Barnsdall)
	VEHICLE ELECTRIC CHARGING PARKING	10	3	-	10	
	VEHICLE COMPACT SPACE PARKING	-	4	-	4	
	VEHICLE REGULAR PARKING	117	6	9	132	
	<b>SUBTOTAL PER BUILDING</b>	<b>130</b>	<b>14</b>	<b>10</b>	<b>162</b>	
BICYCLE	BICYCLE ELECTRIC CHARGING PARKING	0	7	-	13	
	BICYCLE ENCLOSED SPACE PARKING	-	7	-	7	
	BICYCLE REGULAR PARKING	0	16	10	32	
	<b>SUBTOTAL PER BUILDING</b>	<b>12</b>	<b>30</b>	<b>10</b>	<b>52</b>	

### 3 SANDPIPER PARKING BREAKDOWNS

SCALE: N.T.S.

	LAND USE	PARKING REQUIRED (COMBINED AREAS)	(E) PARKING SUPPLY	(P) PARKING SUPPLY	COMMENTS
SANDPIPER	CLUB HOUSE TOTAL	-	124	138	
	BARNSDALL TOTAL	-	5	14	
	MAINTENANCE TOTAL	-	10	10	
	<b>SANDPIPER GRAND TOTAL</b>	<b>148</b>	<b>139</b>	<b>162</b>	
	<b>PARKING SURPLUS TOTAL (FROM REQ.)</b>	<b>-</b>	<b>-17</b>	<b>+16</b>	

NO.	REV.	DATE	BY
1	0	11/15/2023	JACOB
2	0	11/15/2023	JACOB
3	0	11/15/2023	JACOB

### 2 SANDPIPER PARKING TOTALS

SCALE: N.T.S.

	LAND USE	AMNT. SF	1ST. FLR. SF	2ND. FLR. SF	AMNT. SF	BARNSDALL SF	SF TOTALS	PKG. RATE	PKG. REQ.	COMMENTS	
CLUB HOUSE - BARNSDALL - MAINTENANCE AREA	GOLF COURSE (M)	-	18 HOLES	-	-	-	18 HOLES	N/A	70		
	GOLF COURSE STORAGE	703.0	-	-	-	-	703.0	1.1/1,000 SF	1	0.7 Required spaces (+1)	
	GOLF COURSE TERRACES	-	6,417.0	-	-	-	6,417.0	N/A	-	-	
	GRAB N GO INDOOR	-	760.0	-	-	-	760.0	N/A	-	-	
	GRAB N GO OUTDOOR	-	1,141.0	-	-	-	1,141.0	N/A	-	-	
	PRO SHOP	-	1,180.0	-	-	-	1,180.0	1.1/200 SF	3	2.3 Required spaces (+1)	
	PRO SHOP STORAGE	592.0	-	-	-	-	592.0	1.1/1,000 SF	1		
	GOLF MAINT. STORAGE	-	-	-	5,703.0	-	5,703.0	N/A	-	-	
	RESTAURANT	-	1,341.0	2,890.0	-	710.0	4,941.0	1.1/200 SF	20	19.3 Required spaces (+1)	
	RESTAURANT STORAGE / B.O.H.	2,601.0	1,811.0	1,854.0	-	306.0	6,572.0	N/A	-	-	
	LOUNGE / TERRACE	-	1,065.0	5,486.0	-	801.0	7,416.0	1.1/200 SF	30	29.7 Required spaces (+1)	
	OFFICE	1,980.0	86.0	-	3,390.0	-	5,456.0	1.1/300 SF	12	11.0 Required spaces (+1)	
	CIRCULATION	2,940.0	2,777.0	1,216.0	-	814.0	7,406.0	N/A	-	-	
	CONFERENCE ROOM	-	-	1,320.0	-	-	1,320.0	N/A	-	-	
	<b>TOTAL PARKING REQUIRED</b>									<b>146</b>	

(M) No city code for golf course available. Requirement based on survey at (E). Includes during peak activity on Friday, Saturday, and Sunday.

### 1 PROPOSED SANDPIPER PARKING CODE REQUIREMENTS PER AREAS

SCALE: N.T.S.

### SANDPIPER GOLF CLUB

7925 HOLLISTER AVE.  
 GOLETA, CA. 93117

PROJECT NO:	33003
SCALE:	AS SHOWN
DATE:	8/01/2023
DRAWN BY:	JACOB

### PARKING CODE REQUIREMENTS

PROJECT NO:



© 2011 WINICK ARCHITECTS. ALL RIGHTS RESERVED. THIS DOCUMENT IS THE PROPERTY OF WINICK ARCHITECTS. NO PART OF THIS DOCUMENT IS TO BE REPRODUCED OR TRANSMITTED IN ANY FORM OR BY ANY MEANS, ELECTRONIC OR MECHANICAL, WITHOUT PERMISSION IN WRITING FROM WINICK ARCHITECTS.

NO.	DATE	DESCRIPTION	BY
1	10/20/11	CONCEPTUAL ARCHITECTURE	AW
2	11/01/11	PRELIMINARY CONCEPTS	AW
3	11/01/11	PRELIMINARY CONCEPTS	AW
4	11/01/11	PRELIMINARY CONCEPTS	AW

## SANDPIPER GOLF CLUB

7925 HOLLETER AVE.  
 GOLETA, CA. 93117

PROJECT NO. 33033

SCALE: AS SHOWN DATE: 8/OCT/2012 DRAWN BY: CW

## PARKING CODE AREA DIAGRAMS

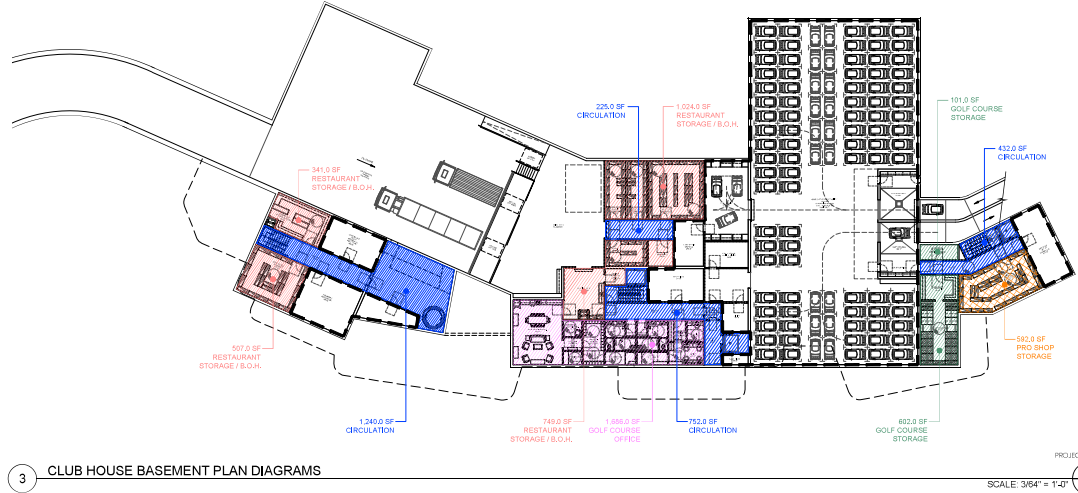
10/20/11

### LEGEND

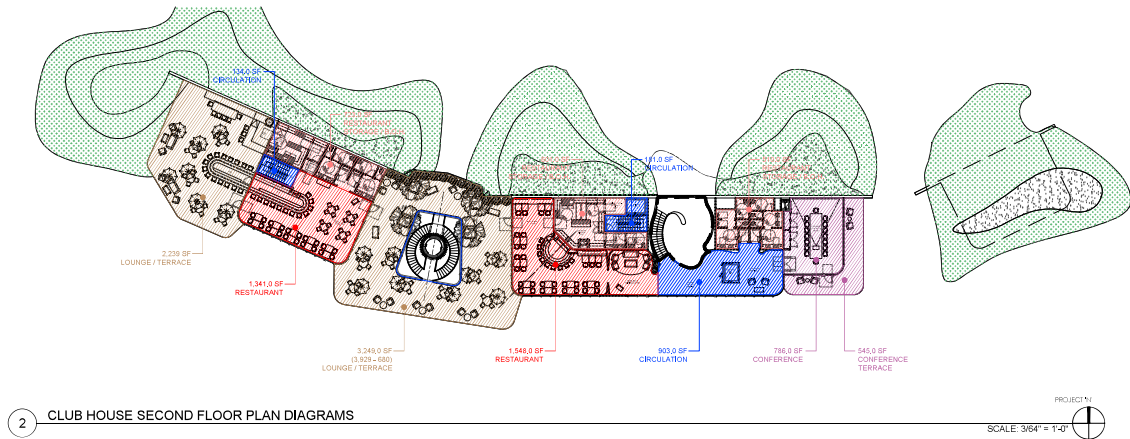
	GOLF COURSE		RESTAURANT		LOUNGE / TERRACE
	PRO SHOP		RESTAURANT STORAGE / B.O.H.		CONFERENCE
	PRO SHOP STORAGE		GRASS / CO.		CIRCULATION
	OFFICE		NOT INCLUDED / NOT APPLICABLE		



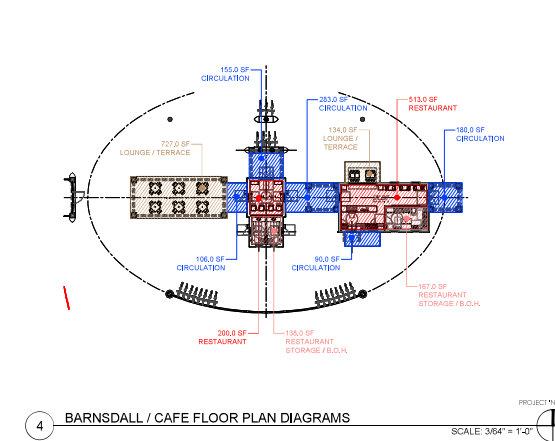
5 MAINTENANCE FLOOR PLAN DIAGRAMS



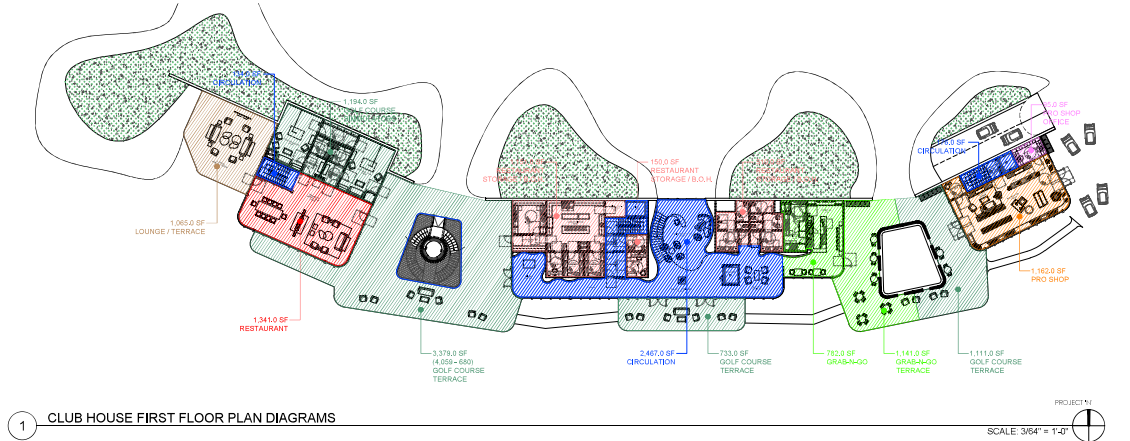
3 CLUB HOUSE BASEMENT PLAN DIAGRAMS



2 CLUB HOUSE SECOND FLOOR PLAN DIAGRAMS



4 BARNSDALL / CAFE FLOOR PLAN DIAGRAMS



1 CLUB HOUSE FIRST FLOOR PLAN DIAGRAMS

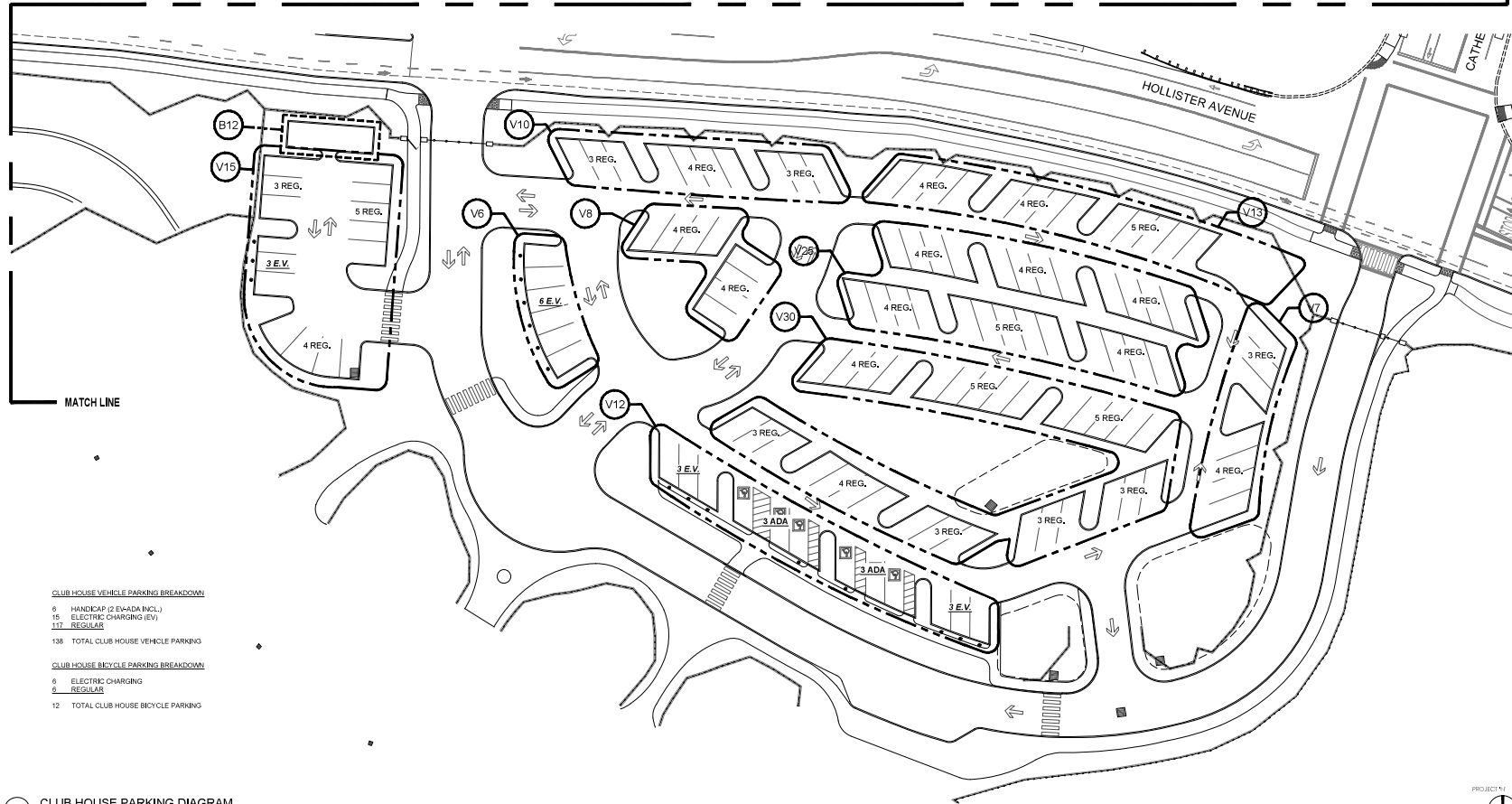


© 2024 WINICK ARCHITECTS. ALL RIGHTS RESERVED. THIS DOCUMENT IS THE PROPERTY OF WINICK ARCHITECTS AND IS NOT TO BE REPRODUCED OR TRANSMITTED IN ANY FORM OR BY ANY MEANS, ELECTRONIC OR MECHANICAL, WITHOUT PERMISSION IN WRITING FROM WINICK ARCHITECTS.

### LEGEND

- |                  |                               |                  |
|------------------|-------------------------------|------------------|
| GOLF COURSE      | RESTAURANT                    | LOUNGE / TERRACE |
| PRO SHOP         | RESTAURANT STORAGE / B.O.H.   | COFFERED         |
| PRO SHOP STORAGE | GRASS / CO.                   | CIRCULATION      |
| DRIVE            | NOT INCLUDED / NOT APPLICABLE |                  |

MATCH LINE



**CLUB HOUSE VEHICLE PARKING BREAKDOWN**  
 6 HANDICAP (2 EV+ADA INCL.)  
 15 ELECTRIC CHARGING (EV)  
 117 REGULAR  
 138 TOTAL CLUB HOUSE VEHICLE PARKING

**CLUB HOUSE BICYCLE PARKING BREAKDOWN**  
 6 ELECTRIC CHARGING  
 6 REGULAR  
 12 TOTAL CLUB HOUSE BICYCLE PARKING

NO.	DATE	DESCRIPTION	BY
1	10/24/2023	CONCEPT DESIGN	AW
2	11/01/2023	PRELIMINARY DESIGN	AW
3	11/01/2023	FINAL DESIGN	AW

### SANDPIPER GOLF CLUB

7925 HOLLISTER AVE.  
 GOLETA, CA 93117

PROJECT NO: 33003  
 SCALE: AS SHOWN  
 DATE: 8/10/2023  
 DRAWN BY: CW

### CLUB HOUSE PARKING DIAGRAMS

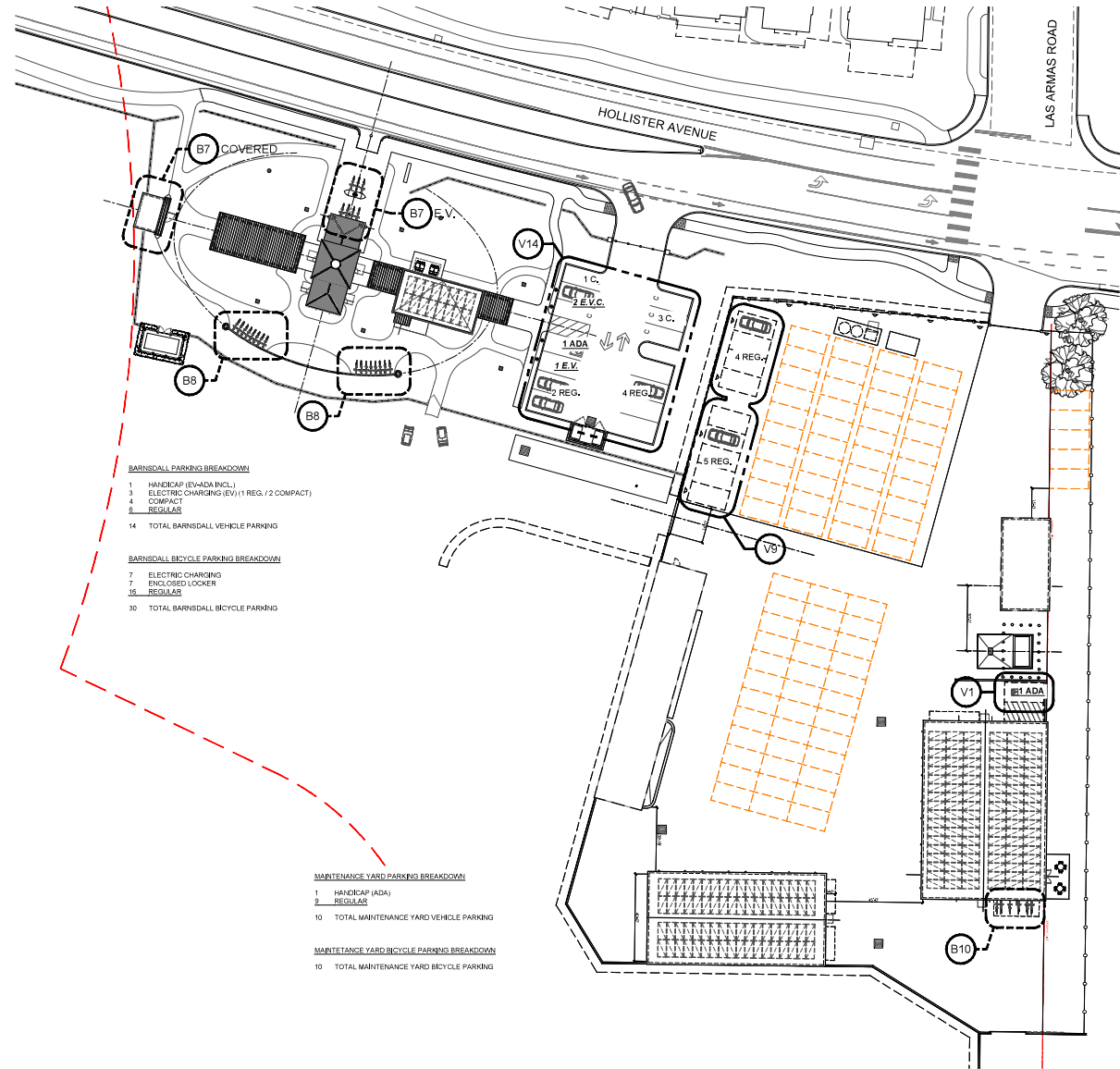
10/24/2023

1 CLUB HOUSE PARKING DIAGRAM

PROJECT NO: 33003  
 SCALE: 3/8" = 1'-0"



© 2011 WINICK ARCHITECTS, INC. ALL RIGHTS RESERVED. THIS DOCUMENT IS THE PROPERTY OF WINICK ARCHITECTS, INC. AND IS NOT TO BE REPRODUCED OR TRANSMITTED IN ANY FORM OR BY ANY MEANS, ELECTRONIC OR MECHANICAL, WITHOUT THE WRITTEN PERMISSION OF WINICK ARCHITECTS, INC.



- BARNSDALL PARKING BREAKDOWN**
- 1 HANDICAP (EV-ADA INCL.)
  - 3 ELECTRIC CHARGING (EV) (1 REG./2 COMPACT)
  - 4 COMPACT
  - 2 REGULAR
  - 14 TOTAL BARNSDALL VEHICLE PARKING

- BARNSDALL BICYCLE PARKING BREAKDOWN**
- 7 ELECTRIC CHARGING
  - 7 ENCLOSED LOCKER
  - 16 REGULAR
  - 30 TOTAL BARNSDALL BICYCLE PARKING

- MAINTENANCE YARD PARKING BREAKDOWN**
- 1 HANDICAP (ADA)
  - 9 REGULAR
  - 10 TOTAL MAINTENANCE YARD VEHICLE PARKING

- MAINTENANCE YARD BICYCLE PARKING BREAKDOWN**
- 10 TOTAL MAINTENANCE YARD BICYCLE PARKING

NO.	REVISION	DATE
1	CONCEPT DESIGN	7/24/2011
2	CONCEPT DESIGN	10/24/2011
3	PRELIMINARY DESIGN	02/09/2012
4	PRELIMINARY DESIGN	03/20/2012
5	CONCEPT DESIGN	07/24/2012

**SANDPIPER GOLF CLUB**

7925 HOLLISTER AVE.  
 GOLETA, CA. 93117

PROJECT NO.	33003
SCALE	AS SHOWN
DATE	8/10/2012
DRAWN BY	CL

**BARNSDALL / MAINT. PARKING DIAGRAMS**

1 BARNSDALL / MAINTENANCE YARD PARKING DIAGRAM

PROJECT NO. 33003  
 SCALE: 3/8" = 1'-0"



- NOTES**
1. REFER TO CHL DRAWINGS FOR GRADING PLANS
  2. REFER TO LANDSCAPE DRAWINGS FOR ALL TREE AND LANDSCAPE PLANTING, COFFERS, AND PERMITS.
  3. REFER TO CHL DRAWINGS FOR HOLLERIEY / CATHEDRAL OAKS TRAFFIC FOR PARKER / AND ADJUSTMENTS.
  4. REFER TO LANDSCAPE DRAWING FOR GOLF COURSE PLANS
  5. ROOF / POWER / RIS. AND RIS. SEE HOLLERIEY TO BE RELOCATED (SEE ENGINEERING REFERS TO CHL SP-003)
  6. REFER TO CHL DRAWINGS FOR UTILITIES

**LEGEND**

--- AREA OF WORK

**WINICK ARCHITECTS**  
 404 Garden Street  
 Santa Barbara CA 93101  
 Tel: 805.739.2400  
 Fax: 805.484.1400  
 www.winickarchitects.com



CLUB HOUSE  
 REFER TO SHEET A\_SP-002

BARNSDALL / MAINTENANCE  
 REFER TO SHEET A\_SP-004

COMFORT STATION  
 REFER TO SHEET A\_SP-003

1 EXISTING OVERALL SITE PLAN

PROJECT 117  
 SCALE: 1" = 150'-0"

NO.	REVISION	DATE
1	CONCEPT DESIGN	10/01/2020
2	CONCEPT DESIGN	10/01/2020
3	CONCEPT DESIGN	10/01/2020
4	CONCEPT DESIGN	10/01/2020

**SANDPIPER GOLF CLUB**

7925 HOLLETER AVE.  
 GOLETA, CA. 93117

PROJECT NO. 33031  
 DATE 11/01/2020  
 DRAWN BY [signature]

EXISTING OVERALL SITE PLAN

A\_SP-001.0



- NOTES**
1. REFER TO CHL DRAWINGS FOR GRADING PLANS
  2. REFER TO LANDSCAPE DRAWINGS FOR ALL TREE AND LANDSCAPE TRAFFIC CORRECTIVE AND REPAIRS
  3. REFER TO CHL DRAWINGS FOR HOLLISTER/CATHERAL OAKS TRAFFIC CORRECTIVE AND ADJUSTMENTS
  4. REFER TO LANDSCAPE DRAWING FOR GOLF ROUTING PLANS
  5. HOSE/POWER LINES AND LIGHTS ARE HOLES TO BE RELOCATED OR DELETED. REFER TO CHL FOR DETAILS
  6. REFER TO CHL DRAWINGS FOR UTILITIES
- LEGEND**
- AREA OF WORK



1 EXISTING SITE PLAN SETBACK DIAGRAM

PROJECT 17  
 SCALE: 1" = 150'-0"

NO.	REV.	DATE	BY
1	CONCEPT DEVELOP	12/01/2021	AW
2	CONCEPT DEVELOP	12/01/2021	AW
3	CONCEPT DEVELOP	12/01/2021	AW

**SANDPIPER GOLF CLUB**  
 7925 HOLLISTER AVE.  
 GOLETA, CA. 93117  
 PROJECT NO: 33003  
 SCALE: AS SHOWN  
 DATE: 11 OCT 2022  
 DRAWN BY: AW

EXISTING SITE PLAN SETBACK DIAGRAM  
 004493.DWG