

EMERGENCY CONDITIONS ON ELLWOOD MESA



City Council

September 7, 2017

Presentation by:

Anne Wells, Advance Planning Manager

Dan Meade, Ph.D, Althouse and Meade

Cory Meyer, Certified Arborist, Althouse and Meade

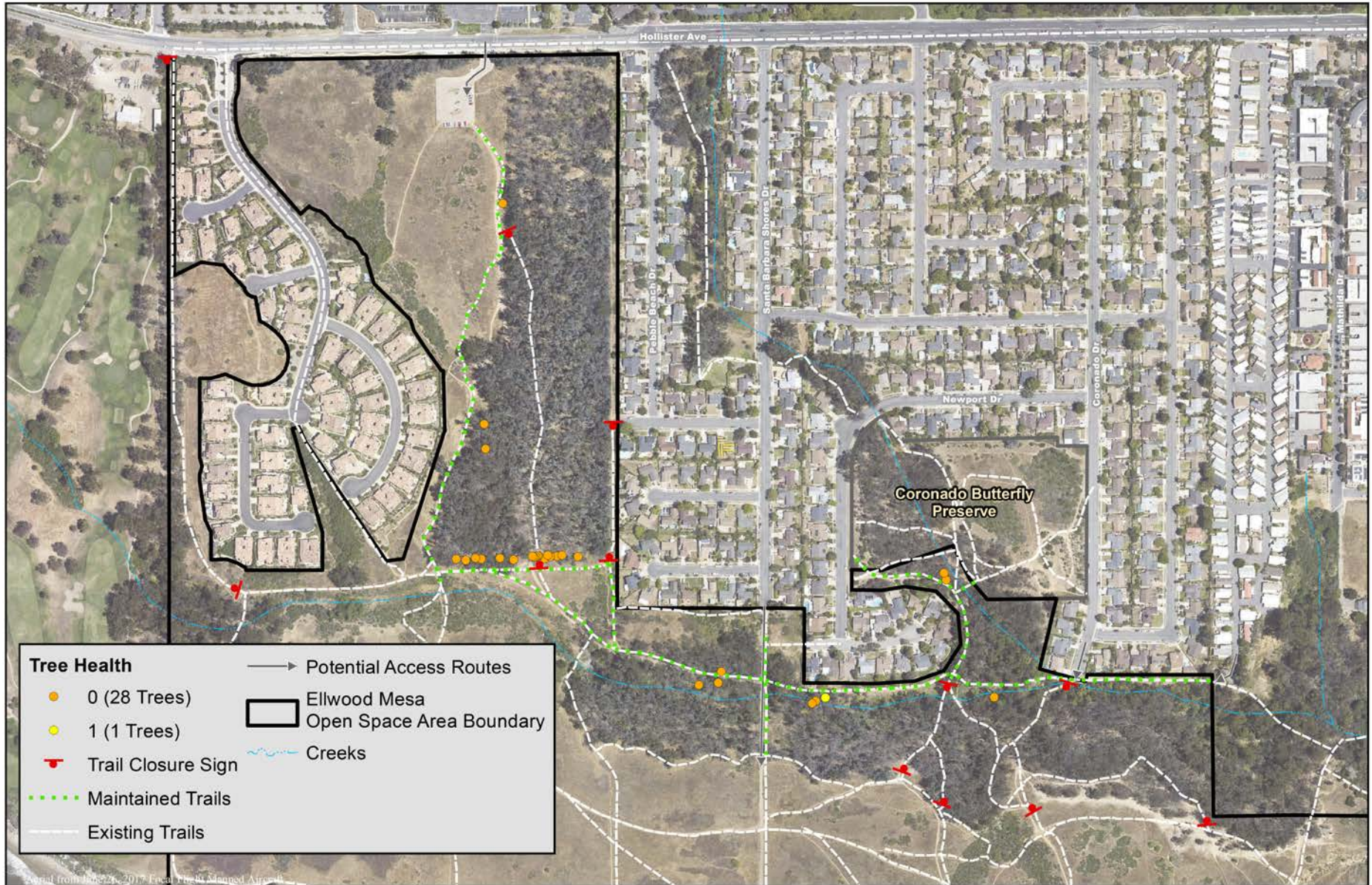
Presentation Outline

- Follow-up from September 5, 2017 Council Meeting
- Revised Option 6
- Options 1 through 6 Comparison Table

Follow-up from 9/5/17 Council Meeting

- Insurance Provider Recommendations
- U.S. Fish and Wildlife Service and CCC
- Tree Fall Risk Assessment vs Tree Health Assessment
- Consequences of Leaving Dead Trees in Place
- Tree Health and Water Availability
- Climate Change and Sea Level Rise Influences
- Short-Term Restoration Maintenance Actions
- Tree Removal Timing
- Monitoring Costs
- Habitat Management Plan Components and Process

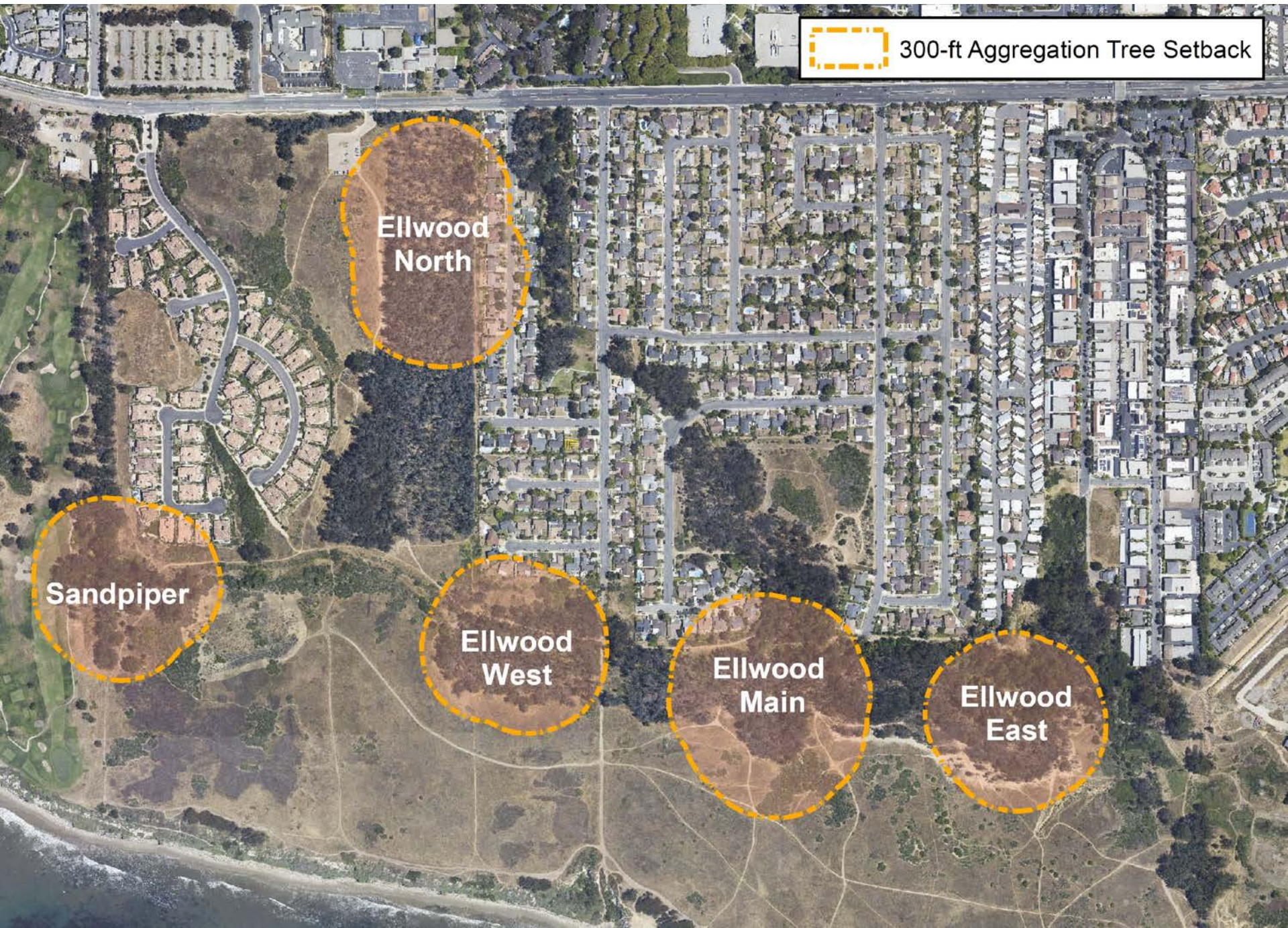
Tree Removal Locations - Option 6



Council Consideration

Provide feedback to staff on the proposed options for the scope of work to remedy the immediate public safety conditions on Ellwood Mesa.

<u>Option 1</u> Dead and Dying Tree Removal	<u>Option 2</u> Dead and Dying Tree Removal with Targeted Care for Trees with Significant Value	<u>Option 3</u> Phased Tree Removal Starting with Area South of Hollister Parking Lot	<u>Option 4</u> Removal of Trees Rated "0" Only	<u>Option 5</u> Tree Removal After Approval of Habitat Management Plan	<u>Option 6</u> Removal of Dead and Dying Trees Adjacent to Main Access Routes Through Eucalyptus
--	--	--	--	---	--



Ellwood North

Sandpiper

Ellwood West

Ellwood Main

Ellwood East

300-ft Aggregation Tree Setback

0 and 1 Tree Map



0 200 400 800 1,200 1,600 Feet

N

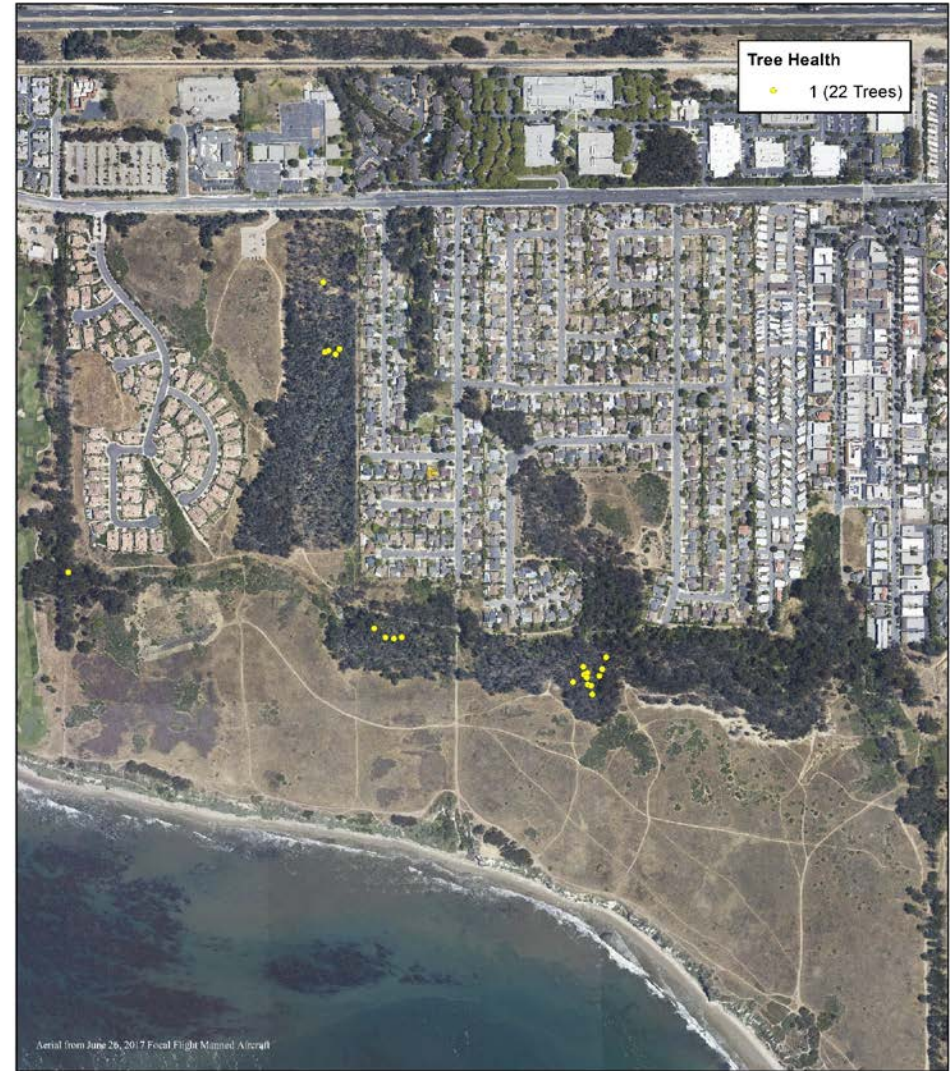
Option 1



Tree Removal Locations Without Targeted Trees - Option 1



Trees Proposed for Targeted Care - Option 2



0 200 400 800 1,200 Feet

City of Goleta
Ellwood Grove Restoration



Map Updated: September 05, 2017 04:04 PM
Last Edited by: JessicaB

0 200 400 800 1,200 Feet

City of Goleta
Ellwood Grove Restoration



Map Updated: September 05, 2017 02:57 PM
Last Edited by: JessicaB

Tree Removal Locations - Option 3



0 125 250 500 750 1,000 Feet

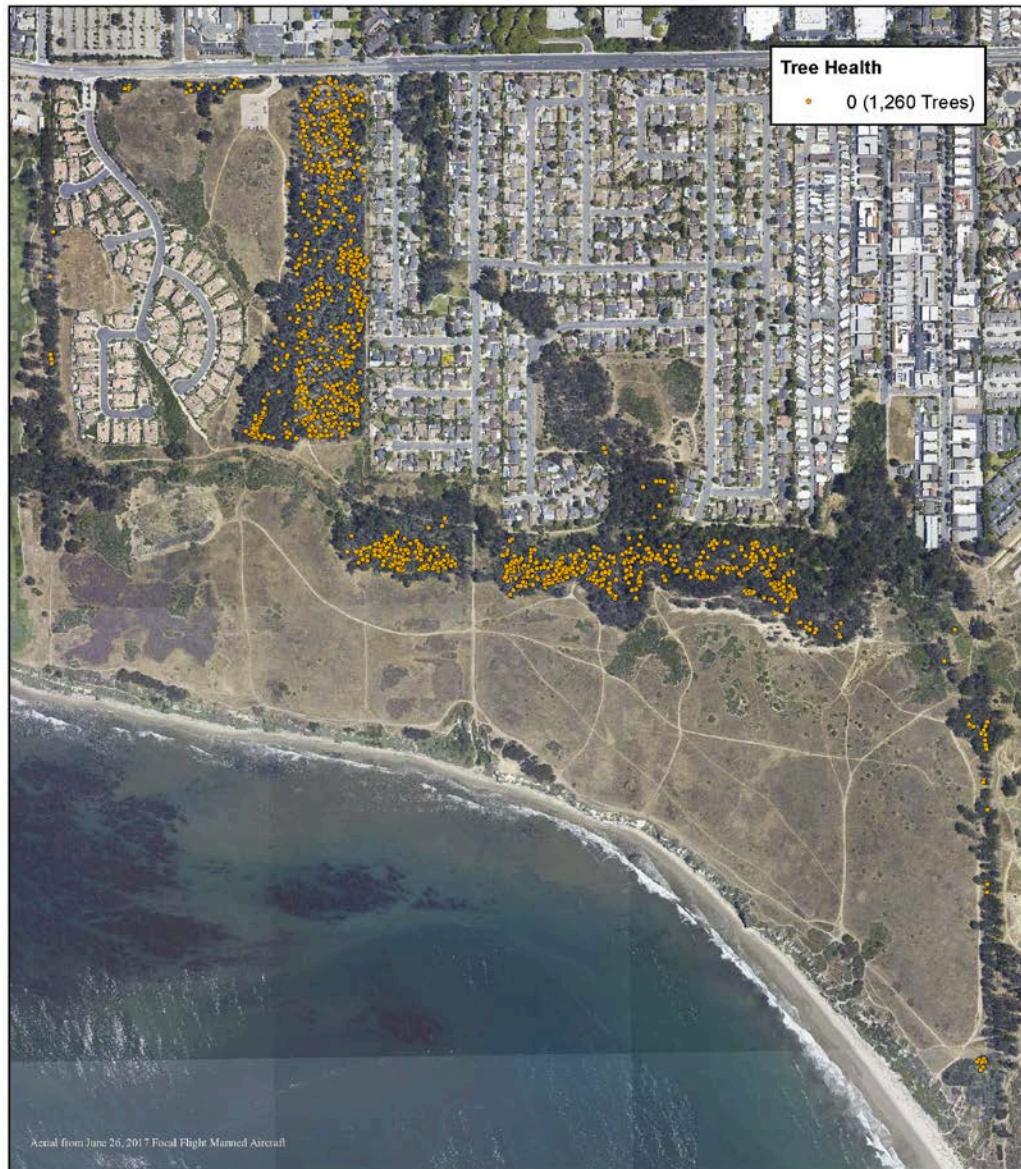


City of Goleta
Ellwood Grove Restoration



Map Updated: September 05, 2017 09:23 AM
Last Edited by: JessicaB

Tree Removal Locations - Option 4



0 200 400 800 1,200
Feet



City of Goleta
Ellwood Grove Restoration



Map Updated: September 05, 2017 03:59 PM
Last Edited by: JessicaB

Options 5: Tree Removal Post Habitat Management Plan Approved

