

INDEX

- 1 Site Plan**
- 2 Site Plan color**
- 3 Proposed sign & size**
- 4 Proposed sign & sizes color**
- 5 Channel letters details & material used**
- 6 Details installation sign CHANNEL LETTERS**

2022 CBC CODE 2304.10.2

Additional fastener options have been added to the sheathing fastening schedule and nail patterns have been updated to current industry standards and the new ASCE 7 wind loads

2022 CBC ENERGY CODE 30.3(a)2A

All outdoor sign lighting is controlled with a photocontrol in addition to an automatic time switch control, or an astronomical time-switch control.

SIGN LANDLORD

A handwritten signature in black ink, consisting of several loops and strokes, positioned above a horizontal line.

SIGN GRAPHIC DESIGNER

2022 CBC CODE 1013.4

Added verbiage indicating where tactile exit signs are required

SITE PLAN

EAST

NORTH



SOUTH

WEST

LATINOS INSURANCE
5733 HOLLISTER AVE,
GOLETA, CA 93117

PRIME SIGNS
C45 Lic. 1044506



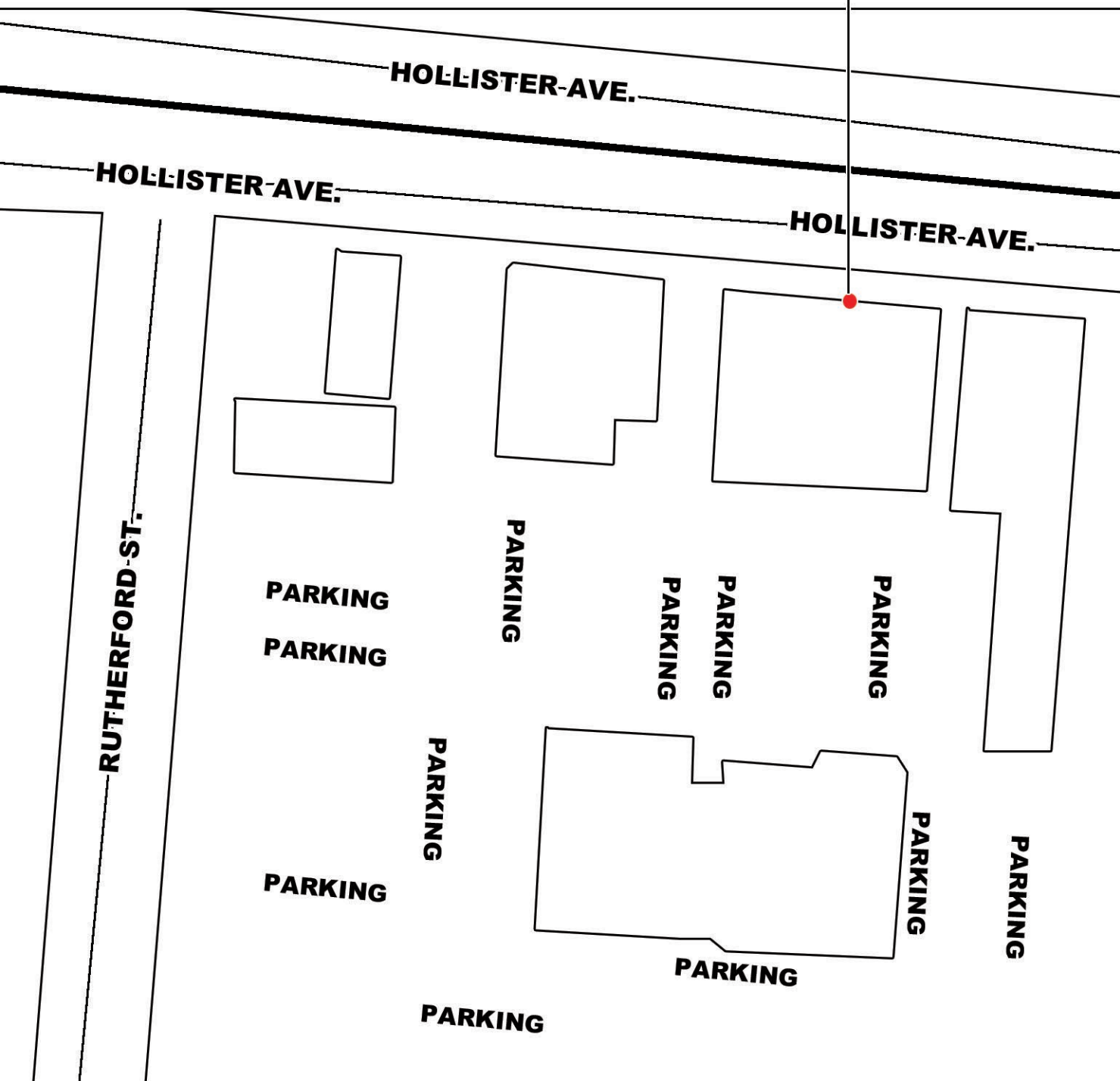
SIGN GRAPHIC DESIGNER

SCOPE OF WORK
ONE ILLUMINATED SIGNS
CHANNEL LETTERS
INSTALLATION

5733 HOLLISTER AVE.
TOTAL BUILDING 23' ϕ
Sign 100" x 30" = 20.83' ϕ
Total usign 20.83' ϕ

This sign is intended to be installed in accordance with the requirements of Article 600 of the National Electric Code and/or other applicable codes. This includes proper grounding and bonding of the sign. Construction shall comply with the 2022 CBC and CEC. See attached NRCC-LTS-E

WALL SIGN
(Electrical Sign)



WALL SIGN (Electrical Sign)

SITE PLAN

EAST

NORTH

SOUTH



WEST

LATINOS INSURANCE
5733 HOLLISTER AVE,
GOLETA, CA 93117

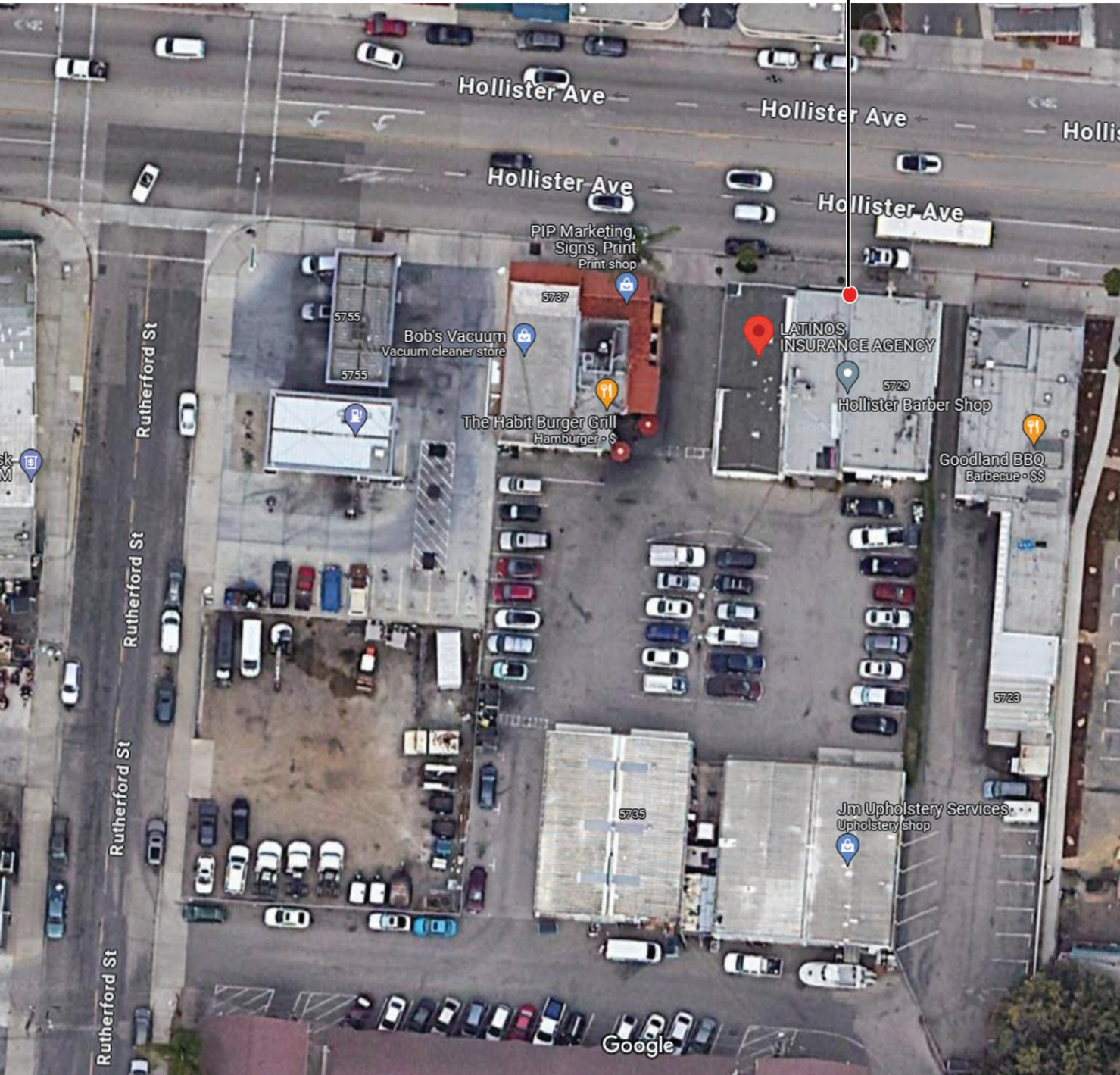
PRIME SIGNS
C45 Lic. 1044506

SIGN GRAPHIC DESIGNER

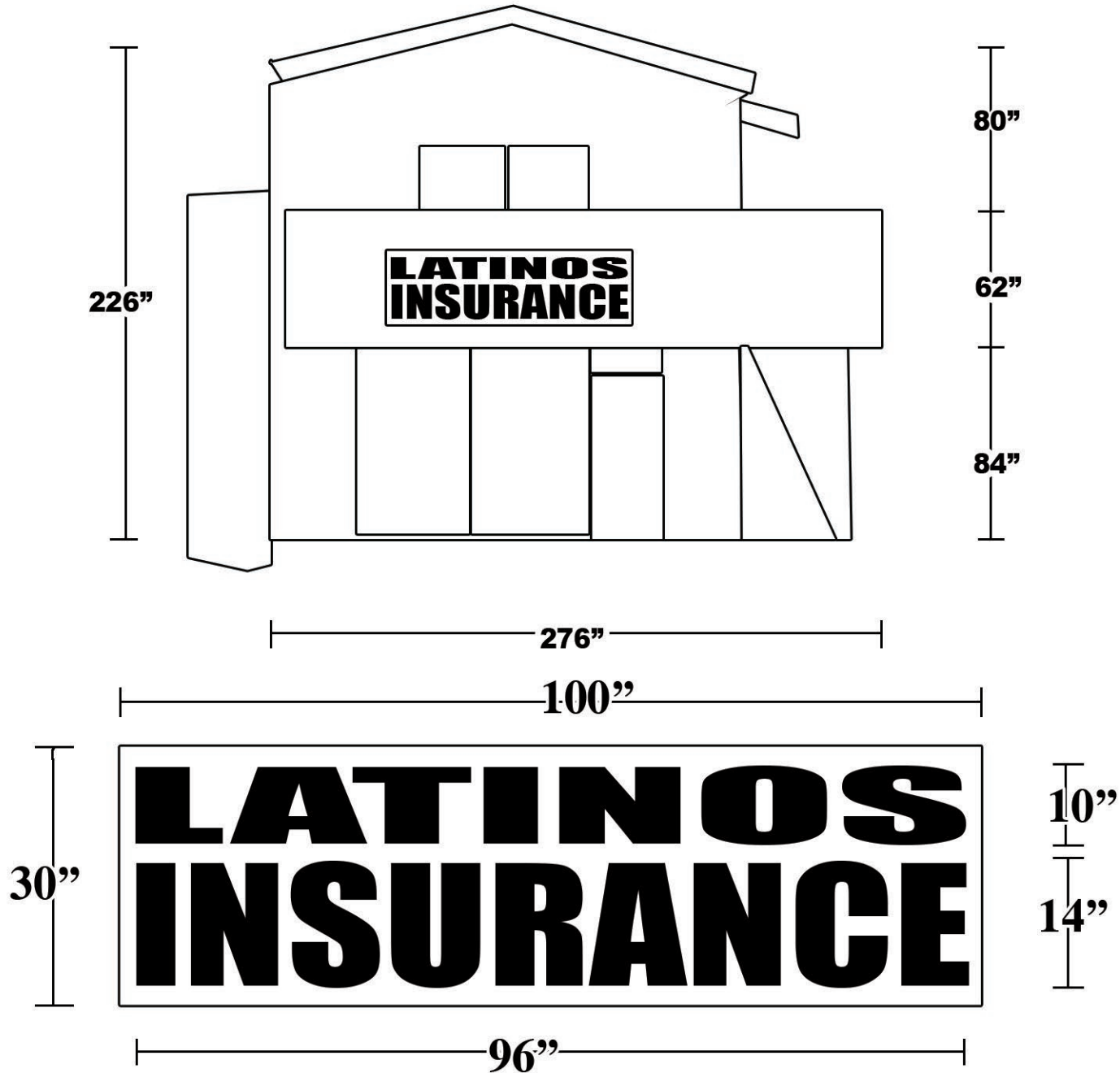
SCOPE OF WORK
ONE ILLUMINATED SIGNS
CHANNEL LETTERS
INSTALLATION

5733 HOLLISTER AVE.
TOTAL BUILDING 23' ϕ
Sign 100" x 30" = 20.83' ϕ
Total usign 20.83' ϕ

This sign is intended to be installed in accordance with the requirements of Article 600 of the National Electric Code and/or other applicable codes. This includes proper grounding and bonding of the sign. Construction shall comply with the 2022 CBC and CEC. See attached NRCC-LTS-E

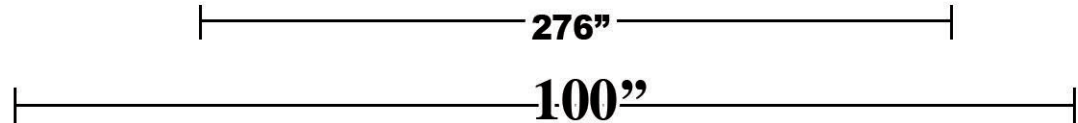


**PROPOSED SIGN A AND SIZE, ELECTRICAL SIGN
PROPOSED STOREFRONT ELEVATION
SCALE: 1' = 1/4"**



SIGN GRAPHIC DESIGNER

**PROPOSED SIGN A AND SIZE, ELECTRICAL SIGN
PROPOSED STOREFRONT ELEVATION
SCALE: 1' = 1/4"**

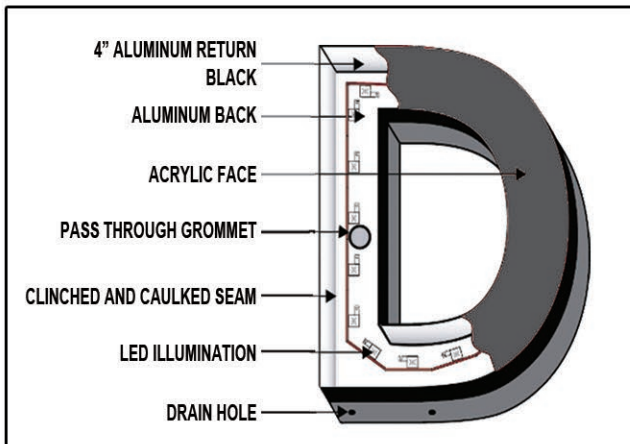


SIGN GRAPHIC DESIGNER





SIGN GRAPHIC DESIGNER

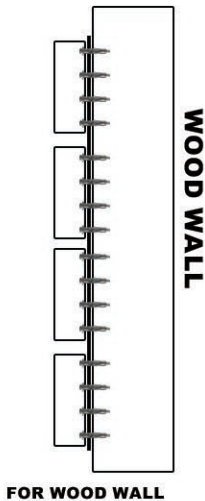


SIGN

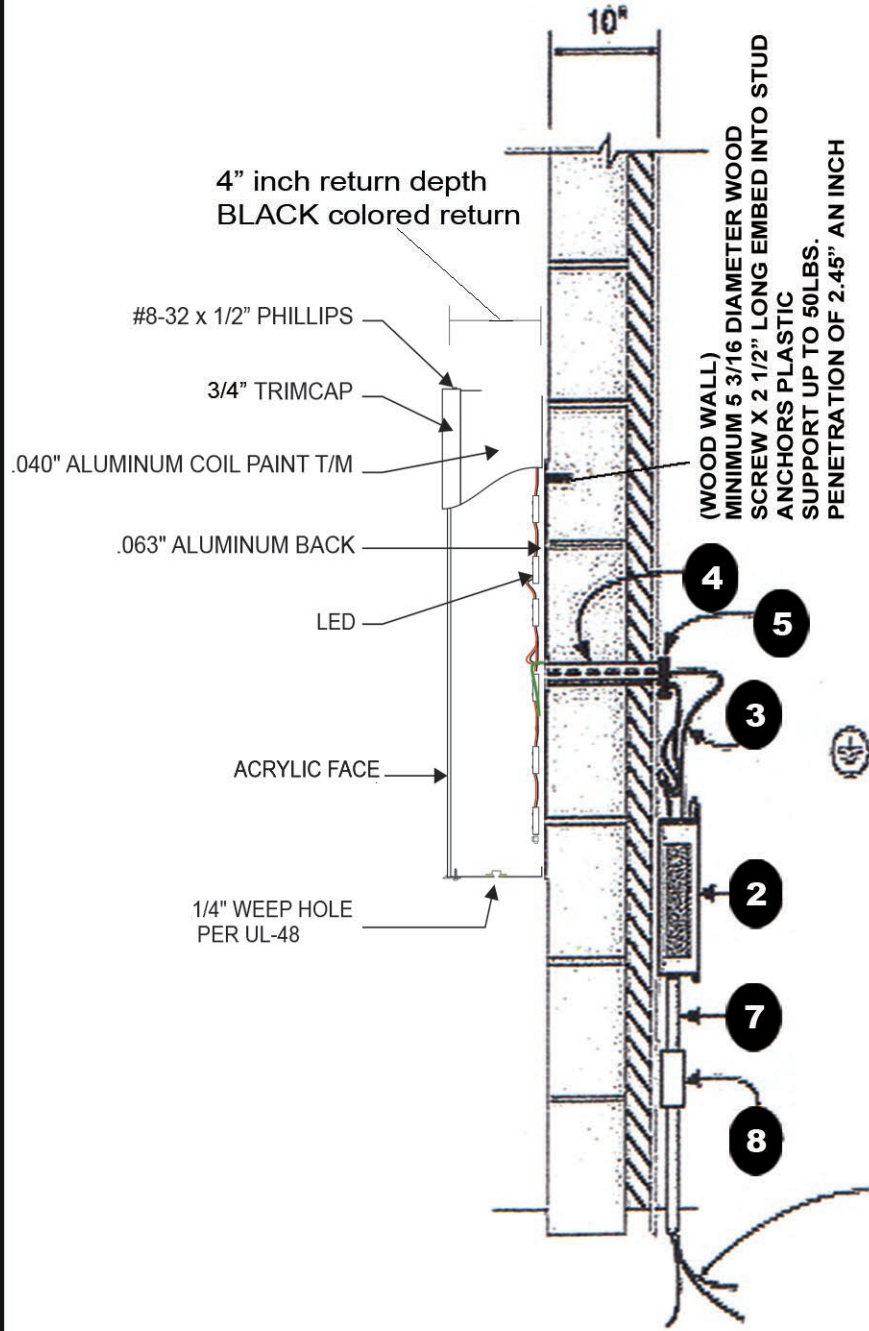
CHANNEL LETTERS
ONE (1) SET
LATINOS INSURANCE
9 CHANNEL LETTERS 14" (INSURANCE)
FACE MADE OF YELLOW ACRYLIC
WITH WHITE LED ILLUMINATION COLOR INSIDE
TRIMCUT YELLOW 3/4"
7 CHANNEL LETTERS 10" (LATINOS)
FACE MADE OF RED ACRYLIC
WITH RED LED ILLUMINATION COLOR INSIDE
TRIMCUT YELLOW 3/4"
1 ALUMINUM BACKGROUND 100" X 30"
PAINT COLOR OF THE WOOD WALL
MINIMUM 5 3/16 DIAMETER
STUCCO SCREW X 2 1/2" LONG EMBED INTO STUD
SUPPORT UP TO 50LBS.
PENETRATION OF 2.45" AN INCH

COLOR KEY

	ACRYLIC YELLOW 1/8"
	ACRYLIC RED 1/8"



INSTALLATION DETAILS CHANNEL LETTERS SIGN



1. Recognized Component* LED, Class 2 Illumination System LED Modules Suitable for wet or dry location. Factory wired.
(Name of component mfg.) _____

2. Recognized Component* Class 2 Power Supply in 24 ga sheet metal enclosure. Power supply factory installed in enclosure.

3. Type PLC cable* rated for use without conduit in damp or dry location. Connect power supply output leads with insulated compression wire connectors to matching color of free conductors in section letter. Bundle neatly and secure to wall with plastic cable ties within 12" of conduit and enclosure and at 6' intervals.

4. Drill 1" dia holes through stucco wall facial perpendicular to wall at locations shown on full size installation pattern. Secure 1/2" running thread to metal letter back. Remove paint from metal at point of connection to conduit. Double lock-ruit, wrench tight. Insert 1/2" running thread through holes in wall. Apply silacone seatant around conduit and hole in cement block before lifting the better back flush with wall surface.

5. Theard grounding bushing onto 1/2" running thread conduit. Attach No. 14 bonding jumper to each bushing (6) and to one power supply enclosure. Bond enclosures to branch circuit equipment ground.

6. Channel letter subassembly sign body suitable for wet location. One 1/4" drain hole in low points of each letter. Attach metal letter back to building facial with 1/4" concrete fasteners at predicted locations in letter back.

7. No. 14 MC Cable between power supply enclosures and disconnect. Secure to wall with cable lies, within twelive (12") inches of termination at enclosure and at no less than at six foot (6") intervals.

8. Safety Switch / Single Pole / Dry location. Firmly secure in place with walboard fasteners.

Branch circuit conductors of suitable capacity and approved type to section sign by others. (120 V / 20 AMP / 792 VA)

* (c) COPY OF MANUFACTURERS CONDITIONS OF USE FOR EACH COMPONENT ATTACHED AND INCLUDED AS PART OF INSTALLATION INSTRUCTIONS.