



TO: Goleta Design Review Board

SUBMITTED BY: Travis Lee, Associate Planner

SUBJECT: Seymour Duncan Exterior Improvements 6338 Lindmar Dr APN 073-050-030 Case Nos. 25-0005-DRB

DRB ACTIONS FOR CONSIDERATION:

1. Conduct Final Review for Paint Change, Lighting, and New Windows/Doors.

PROJECT DESCRIPTION:

This is a request for **Final Review**. The applicant requests a Zoning Clearance to facilitate the following:

- Repainting and refinishing the existing building from beige to slate.
- New openings for glass roll-up doors, pedestrian doors, and windows on the eastern and western elevations.
- New exterior lighting fixtures.

No new square footage is proposed to the existing building.

The subject property has a Zoning and General Plan Land Use designation of Business Park (BP) and are located in the Inland Zone. The site is subject to the Goleta Commercial Architecture and Design standards. The project does not include a request for adjustments or modifications, and no development is proposed within 100 feet of an Environmentally Sensitive Habitat Area (ESHA). The project was filed by Kristian Espiritu, of pk:architecture, for Seymour Duncan, property owner.

DISCUSSION:

On April 8, 2025, the DRB granted Preliminary approval on the design of the Project. Final Design Review is the last step in the design review process and the DRB is tasked with determining if the plans address the issues previously identified by the DRB. At this point, DRB should focus its review on the final design details. The DRB will determine if the Conditions of Approval within DRB purview have been met (i.e. design, etc.). If not met, then DRB should continue the item with direction.

The design review findings and CEQA determination were adopted by the Design Review Board on April 8, 2025, and DRB's action on Final Design Review is not appealable.

NEXT STEPS

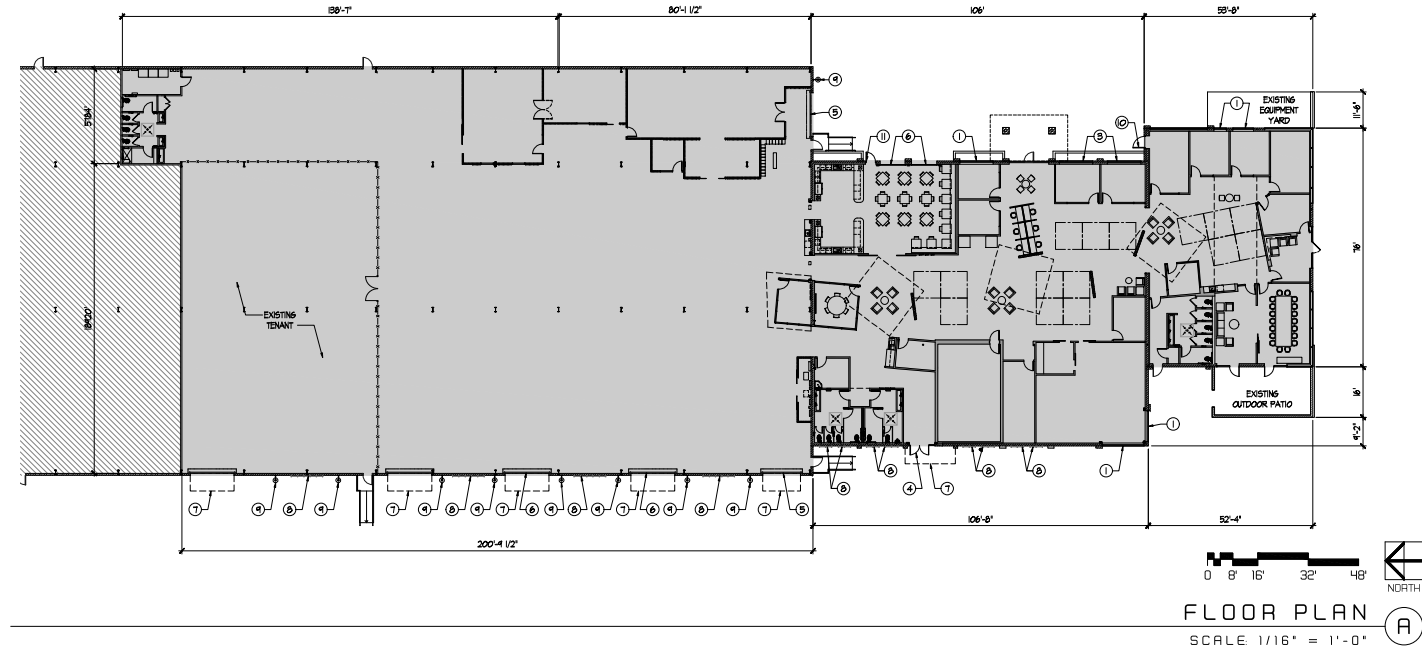
If the DRB grants the applicant's request, the next steps include: (1) ministerial issuance of a Zoning Clearance; (2) review and approval by Building & Safety ("Building Permits"); and (3) project construction, including Building & Safety site inspections.

ATTACHMENTS:

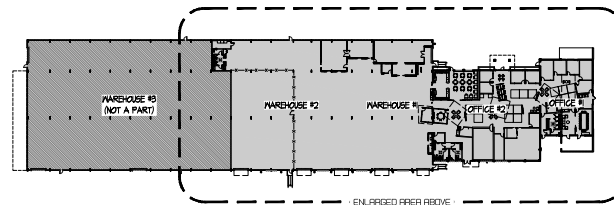
- Attachment A - Project Plans
- Attachment B – Lighting Detail
- Attachment C – Material Board

ATTACHMENT A

PLANS



KEYPLAN



KEYNOTES

- ① NEW GLERESTORY WINDOW
- ② NEW WINDOW
- ③ NEW FULL HEIGHT WINDOWS TO RAISED PLANTER ELEVATION
- ④ NEW ENTRY STOREFRONT SYSTEM
- ⑤ REPLACE EXISTING ROLL-UP DOOR WITH NEW GLASS ROLL-UP DOOR
- ⑥ NEW GLASS ROLL-UP DOOR
- ⑦ LINE OF NEW METAL CANOPY
- ⑧ NEW GREEN SCREEN LATTICE
- ⑨ NEW LIGHT FIXTURE
- ⑩ NEW 3'-0" WIDE x 7'-0" HIGH ALUMINUM FRAMED GLASS DOOR WITH TRANSOM
- ⑪ NEW 3'-0" WIDE x 7'-0" HIGH ALUMINUM FRAMED GLASS DOOR WITH TRANSOM

SYMBOLS LEGEND

	NOT PART OF WORK (N.G.)
	EXISTING TENANT TO REMAIN
	AREA OF TENANT IMPROVEMENT, UNDER SEPARATE PERMIT
	EXISTING CONCRETE MASONRY UNIT BLOCK WALL
	EXISTING INTERIOR PARTITION
	EXISTING FRONT OFFSET GLERESTORY WINDOW
	EXISTING CHAIN LINK FENCING
	NEW FULL HEIGHT INTERIOR PARTITION, FOR REFERENCE ONLY, UNDER SEPARATE PERMIT
	NEW PARTIAL HEIGHT INTERIOR PARTITION, FOR REFERENCE ONLY, UNDER SEPARATE PERMIT
	NEW INTERIOR CHAIN LINK FENCING, FOR REFERENCE ONLY, UNDER SEPARATE PERMIT
	EXISTING DOOR
	EXISTING PAINTED STEEL ROLL-UP DOOR

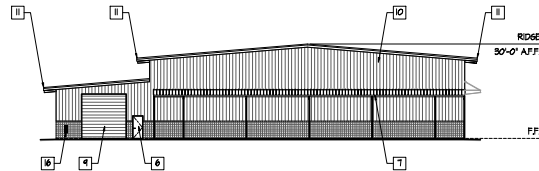
all drawings and written material supporting herein constitute the original and unaltered work of the architect and shall not be reproduced or altered without the written consent of the architect.

revision	date
01B submitted	01-08-2025
plan clarifications	01-27-2025
plan clarifications	01-03-2025
final 01B submitted	01-03-2025

sheet title
FLOOR PLAN

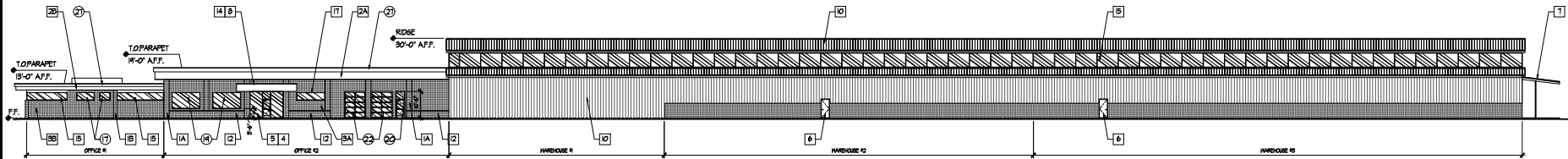
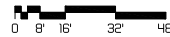
drawn by
project no. 23-105.00
plan check no.
scale as noted

ap-2



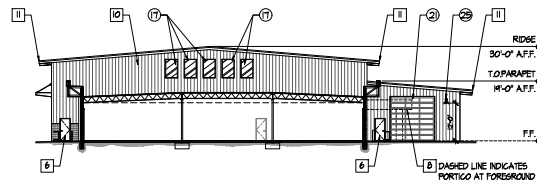
NORTH BUILDING ELEVATION (A)

SCALE: 1/16" = 1'-0"



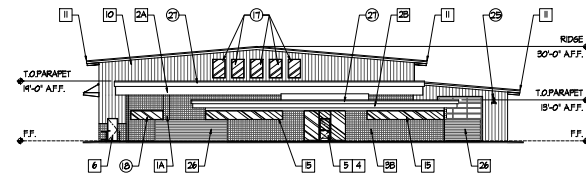
EAST BUILDING ELEVATION (B)

SCALE: 1/16" = 1'-0"



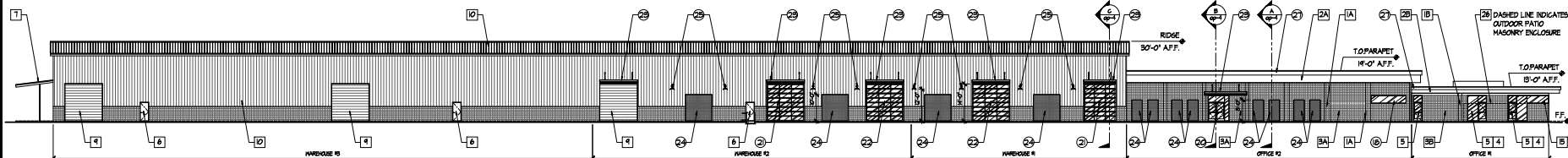
SOUTH BUILDING ELEVATION-WAREHOUSE (E)

SCALE: 1/16" = 1'-0"



SOUTH BUILDING ELEVATION (C)

SCALE: 1/16" = 1'-0"



WEST BUILDING ELEVATION (D)

SCALE: 1/16" = 1'-0"



EXTERIOR FINISH & MATERIALS

- 1 EXISTING MASONRY WALL PILASTER.
 - A PAINT TO MATCH DUN EDWARDS DE634 LONG LAKE
 - B PAINT TO MATCH DUN EDWARDS DE633 HAMILTON BLUE
- 2 EXISTING PARAPET ROOF OVERHANG WITH STUCCO FINISH.
 - 2A PAINT TO MATCH DUN EDWARDS DE634 LONG LAKE
 - 2B PAINT TO MATCH DUN EDWARDS DE633 HAMILTON BLUE
- 3 EXISTING 8" x 8" SCORED MASONRY BLOCK WALL.
 - 3A PAINT TO MATCH DUN EDWARDS DE634 LONG LAKE
 - 3B PAINT TO MATCH DUN EDWARDS DE633 HAMILTON BLUE
- 4 EXISTING DARK BRONZE ANODIZED ALUMINUM WINDOWS TO REMAIN
- 5 EXISTING DARK BRONZE ANODIZED ALUMINUM STOREFRONT TO REMAIN
- 6 EXISTING 3' x 7' HAN DOOR, PAINT TO MATCH DARK BRONZE ANODIZED FINISH
- 7 EXISTING SHED ROOF WITH 4" x 4" STEEL COLUMN SUPPORTS, PAINT TO MATCH DUN EDWARDS DE634 EDGE OF BLACK
- 8 EXISTING PROTICO ROOF WITH STUCCO FINISH AND MASONRY COLUMN SUPPORTS, PAINT TO MATCH DUN EDWARDS DE633 TARNISHED SILVER
- 9 EXISTING STEEL ROLL-UP DOOR, PAINT TO MATCH DARK BRONZE ANODIZED FINISH
- 10 EXISTING METAL BUILDING STRUCTURE, PAINT METAL SIDINGS TO MATCH DUN EDWARDS DE634 EDGE OF BLACK AND CHU WALL BASE TO MATCH DUN EDWARDS DE633 TARNISHED SILVER
- 11 EXISTING GUTTER WITH DOWNSPOUT, PAINT TO MATCH ADJACENT SURFACE
- 12 EXISTING 3'-0" TALL MASONRY PLANTER, PAINT TO MATCH DUN EDWARDS DE633 TARNISHED SILVER
- 13 EXISTING 6' TALL MASONRY GARDEN WALL, GLADD WITH NEW COMPOSITE WOOD (TREX) FINISH, COLOR, SADDLE
- 14 EXISTING EXTERIOR RECESSED LIGHTS AT SOFFIT ABOVE ENTRY DOORS TO REMAIN, RELAMP AS REQUIRED
- 15 EXISTING GLERESTORY WINDOWS TO REMAIN, UNLESS NOTED OTHERWISE
- 16 EXISTING OUTDOOR SURFACE MOUNTED FIRE EXTINGUISHER CABINET TO REMAIN
- 17 NEW DARK BRONZE ANODIZED ALUMINUM GLERESTORY WINDOW
- 18 NEW DARK BRONZE ANODIZED ALUMINUM WINDOW
- 19 NEW DARK BRONZE ANODIZED ALUMINUM FULL HEIGHT WINDOWS TO RAISED PLANTER ELEVATION
- 20 NEW DARK BRONZE ANODIZED ALUMINUM ENTRY STOREFRONT SYSTEM
- 21 REPLACE EXISTING ROLL-UP DOOR WITH NEW DARK BRONZE ANODIZED ALUMINUM WITH GLASS ROLL-UP DOOR
- 22 NEW DARK BRONZE ANODIZED ALUMINUM WITH GLASS ROLL-UP DOOR
- 23 NEW METAL CANOPY WITH TE ROPS AND COMPOSITE WOOD CEILING, COLOR TO MATCH DARK BRONZE ANODIZED ALUMINUM
- 24 NEW GREEN SCREEN LATTICE
- 25 NEW LIGHT FIXTURE
- 26 EXISTING MASONRY SCREEN WALL, GLADD WITH COMPOSITE WOOD (TREX), COLOR, SADDLE
- 27 NEW SHEET METAL TRIM AND COPING, PAINT TO MATCH DUN EDWARDS DE633 TARNISHED SILVER

NOTES

1. REPLACE EXISTING GLERESTORY WINDOWS IN OFFICE AREAS WITH NEW DARK BRONZE ALUMINUM STOREFRONT SYSTEM



Proposed Tenant Improvement for



Coleta, California 93117
APN: 073-050-030

All drawings and written material appearing herein constitute the original and unpublished work of the architect and the same may not be duplicated, used or disclosed without the written consent of the architect.

[illegible]

WALL SECTIONS

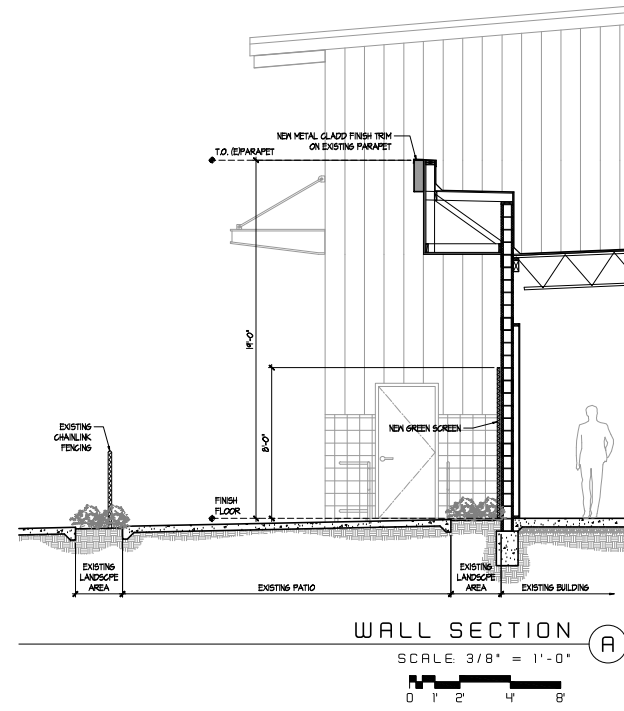
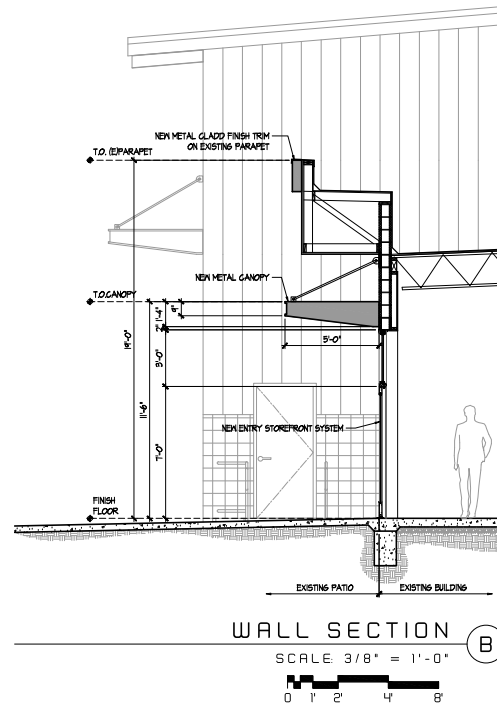
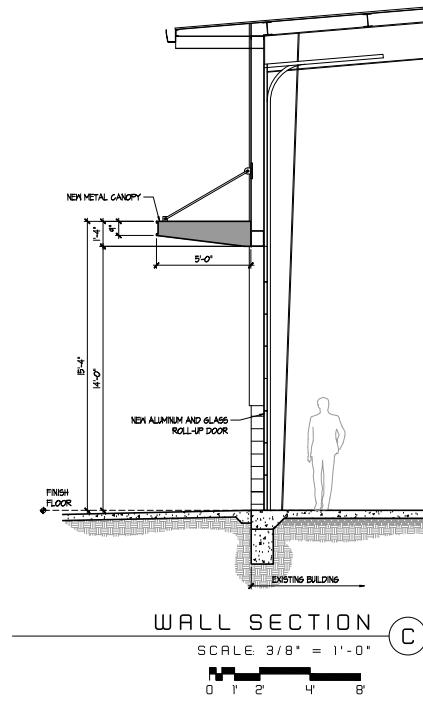
Drawn by

Project no 23-10560

ifan check no

as noted

ap-3.1





EXISTING BUILDING PHOTOGRAPH

NOT TO SCALE



BUILDING RENDERING WITH PROPOSED COLOR AND MATERIALS

NOT TO SCALE



ATTACHMENT B

LIGHTING DETAIL



The Original™ LED Warehouse Gooseneck Light - 28"



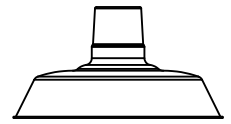


SPS-0448 REV B

THE ORIGINAL™ INTEGRATED LED SERIES

JOB NAME: 6338 Lindmar Drive

FIXTURE TYPE: F12



BLE - G	- WHS28	- 550	- G8	- 100	- NA	- NA	-
A	B	C	D	E	F	G	
NA	- NA	- LED38	- 3500K	-			
H	I	J	K	L			

Order Example: BLE - G - WHS16 - 600 - G22 - 980 - NA - ACR - 600 - NA - LED38 - 2700K - DL

A - MOUNTING STYLE

C	Cord Hung
CN	Chain Hung
F	Flush Mount
G	Gooseneck
S	Stem Mount

B - SHADE SIZE

THE ORIGINAL™:

WHS12 ¹⁰	WHS20 ¹
WHS14	WHS24 ^{1,2,6,10}
WHS16	WHS28 ^{1,2,6,10}
WHS18	

C - SHADE FINISHPORCELAIN FINISHES³:

150	Black
250	White
350	Vintage Green
355	Jadite
455	Cherry Red
550	Yellow
650	Bronze
750	Cobalt Blue
765	Delphite Blue
850	Graphite
950	Metallic Chrome

POWDER COAT FINISHES⁴:

100	Black
105	Textured Black
200	White
300	Dark Green
307	Emerald Green
311	Jadite
370	Mint
380	Chartreuse
390	Teal
400	Barn Red
420	Orange
470	Watermelon
480	Blush Pink
490	Magenta
495	Sherbet Orange
500	Buttery Yellow
570	Sunflower
600	Bronze
601	Chocolate
605	Rust
615	Oil-Rubbed Bronze
700	Royal Blue
705	Navy
710	Cobalt Blue
715	Delphite Blue

C - SHADE FINISH (CONTINUED)POWDER COAT FINISHES⁴:

790	Lavender
800	Industrial Grey
805	Charcoal Granite
810	Graphite
975	Galvanized

NATURAL METALS⁵:

995	Raw Copper
996	Weathered Copper
997	Raw Brass
998	Weathered Brass
999	Oil-Rubbed Copper

D - MOUNTING

Please Note: If Flush Mount [F] is selected in Section A, please select NA

NA	Not Applicable
----	----------------

CSA LISTED CORDS:

SBK	Standard Black
SWH	Standard White
CSB	Black Cloth
CSW	White Cloth
CMG	Grey Cloth
CSR	Red Cloth
CRZ	Red Chevron Cloth
CSBB	Black & Brown Cloth
CSRW	Red & White Cloth
CSGW	Gold & White Cloth
CSBG	Black & Gold Cloth
CSBW	Black & White Cloth
CSBP	Black & Pink Cloth
CSUW	Blue & White Cloth

CHAIN MOUNT OPTIONS:

CN36	3' of Chain ¹
CN48	4' of Chain ¹
CN60	5' of Chain ¹
CN72	6' of Chain ¹

GOOSENECK OPTIONS:

G1 ¹	G11 ¹	G26 ¹
G2 ¹	G12 ¹	G32
G3 ^{1,11}	G13	G34 ¹
G4 ¹¹	G14	G35 ¹
G5 ¹	G15	G36 ¹
G6	G16 ¹	G64 ¹
G7	G17	G65 ¹
G8	G22	
G9	G24	
G10	G25	

D - MOUNTING (CONTINUED)

STEM MOUNT OPTIONS:

ST506	.5" Stem Mount, 6" ¹
ST512	.5" Stem Mount, 12" ¹
ST518	.5" Stem Mount, 18" ¹
ST524	.5" Stem Mount, 24" ¹
ST536	.5" Stem Mount, 36" ¹
ST548	.5" Stem Mount, 48" ¹
ST706	.75" Stem Mount, 6"
ST712	.75" Stem Mount, 12"
ST718	.75" Stem Mount, 18"
ST724	.75" Stem Mount, 24"
ST736	.75" Stem Mount, 36"
ST748	.75" Stem Mount, 48"

E - MOUNTING FINISH

Please Note: See Section C for Finish Options. 980-Brushed Aluminum is also available for Gooseneck and Stem mounting styles. If a Porcelain shade finish is selected, mounting will be powder coat painted-to-match. Porcelain shade finishes are not available with a Natural Metal mounting finish

(I) If Cord Hung [C], selection identifies canopy finish

(II) If Chain Hung [CN] Mounting Style, selection identifies chain and canopy finish. Natural Metals are not applicable

(III) If Stem Mount [S] Mounting Style, selection identifies stem and canopy finish

(IV) If Flush Mount [F] Mounting Style, selection identifies hex coupler and canopy finish. Natural Metals are not applicable

980	Brushed Aluminum
-----	------------------

F - CORDS⁷

NA	Not Applicable
----	----------------

Please Note: See Section D for all applicable CSA Listed Cord Options

G - SHADE ACCESSORIES

NA	None
WC	Wire Cage ^{1,12}
ACR	Acrylic Diffuser ⁵

H - SHADE ACCESSORY FINISH

Please Note: See Section C for Finish Options. Natural Metals not applicable with Acrylic Diffuser or Wire Cage. If Porcelain Finish is selected, accessory will be powder coat painted-to-match

NA	Not Applicable
----	----------------

I - MOUNTING ACCESSORY

Please Note: Mounting Accessories below are only applicable with select Mounting Styles. Please refer to product listings on our website for further detail.

NA	None/Not Applicable
HSC	Hang Straight Canopy ¹⁹
LDBPC	LED Decorative Backing Plate Cover ¹³
LDCHX	LED Decorative Backing Plate Cover & Hex Cover ¹³

J - LIGHT SOURCE

LED11	850 Lumen, 11W LED
LED16	1250 Lumen, 16W LED
LED27	2000 Lumen, 27W LED
LED38	3000 Lumen, 38W LED
LED43	4000 Lumen, 43W LED ¹⁰

K - COLOR TEMPERATURE

2700K	2700K, Warm White
3000K	3000K, Neutral White
3500K	3500K, Bright White
4000K	4000K, Cool White

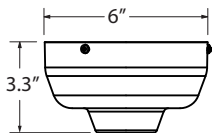
L - LED LENS

DL	Domed Lens
FL	Flat Lens

IMPORTANT: (1) Not available in Natural Metals (2) Not available in Porcelain Enamel (3) All Porcelain Enamel finished shades feature a white interior and a black outer rim (4) All Powder Coat finished shades, Galvanized excluded, feature a white interior (5) Acrylic Diffuser limits the maximum lumen selection as well as reduces lumens delivered and LPW. Selection Limits: 2000 Max for 12" and 14" shades; 3000 Max for 16" through 28" shades (6) Wire Cage not available with select size (7) Only applicable if Chain Hung Mounting Style selected in Section A, select NA if another Mounting Style is selected (8) Natural Metals have a longer estimated manufacturing time, please check the website for exact lead time. There are no returns accepted on Natural Metals (9) Only applicable if Stem Mounting Style is selected in Section A (10) Not available with Acrylic Diffuser shade accessory (11) Not compatible with 16" shade size and larger (12) Wire Cage not available for 24" & 28" shade sizes (13) Not available with G36 Gooseneck option

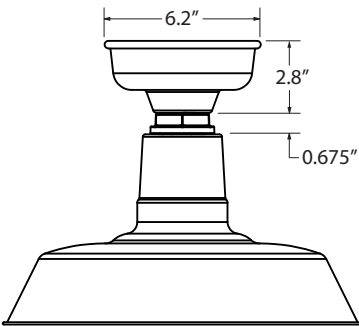
MOUNTING STYLE

HIGH LUMEN CANOPY
FOR PENDANT & FLUSH MOUNT



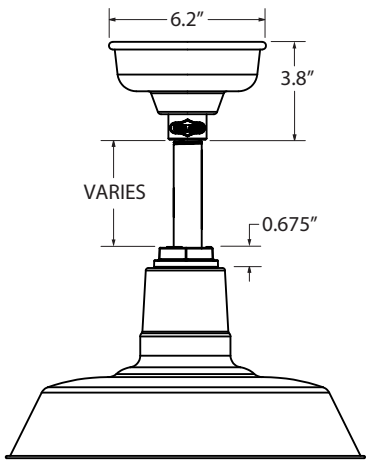
Required if LED 27, 38, 43 Light Source
selected in Section J

FLUSH MOUNT (F)



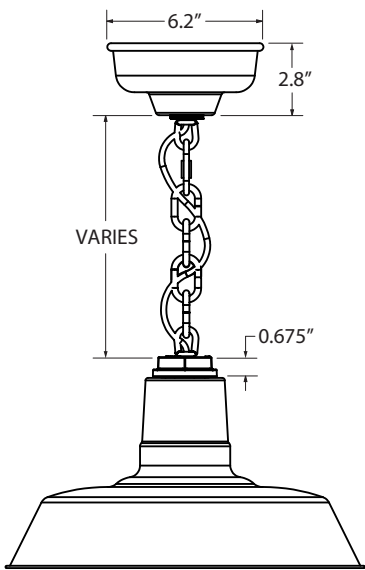
Canopy shown required if LED 11 & 16 Light Source
selected in Section J

STEM MOUNT PENDANT (S)



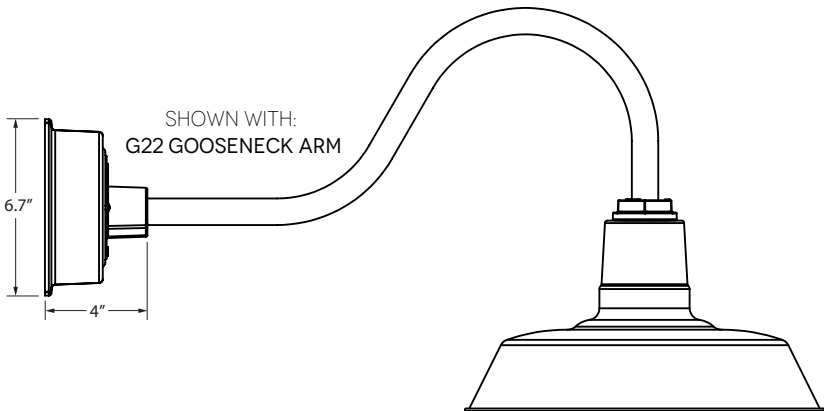
Canopy shown required if LED 11 & 16 Light Source
selected in Section J

CHAIN HUNG PENDANT (CN)

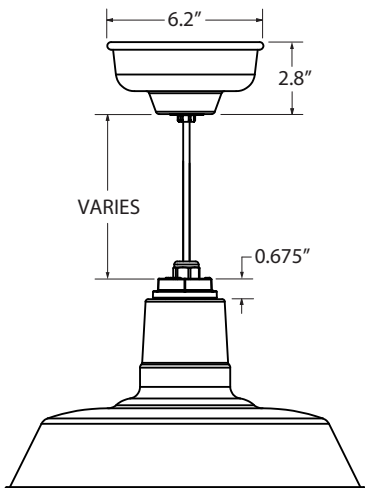


Canopy shown required if LED 11 & 16 Light Source
selected in Section J

GOOSENECK (G)

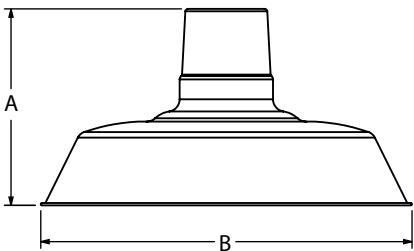


CORD HUNG PENDANT (C)



Canopy shown required if LED 11 & 16 Light Source
selected in Section J

LUMINAIRE DIMENSIONS



SHADE CODE	HEIGHT (A)	DIAMETER (B)
WHS12	7"	12"
WHS14	7.5"	14"
WHS16	7.75"	16"
WHS18	8.5"	18"
WHS20	9.25"	20"
WHS24	10.75"	24"
WHS28	11"	28"

LIGHT SOURCE

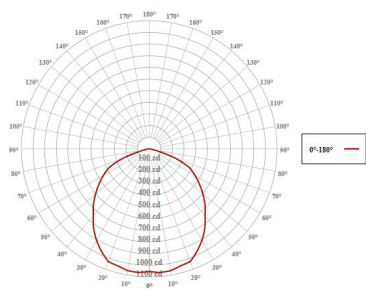
All published luminaire photometric testing performed to IESNA LM-79-08 standards by a NVLAP accredited laboratory. Data is considered to be representative of the configurations shown, within the tolerances allowed by Lighting Facts. To obtain an IES file specific to your project, please contact the factory.

	LUMENS		850		1250		2000		3000		4000	
	Wattage		11		16		27		38		43	
	Optics		Lumens	LPW	Lumens	LPW	Lumens	LPW	Lumens	LPW	Lumens	LPW
WHS12	FLAT		846	74	1244	78	1997	74	2996	79	3995	93
	DOMED		824	72	1212	76	1936	72	2904	76	3872	90
WHS14	FLAT		845	74	1243	77	1982	73	2973	78	3964	92
	DOMED		823	72	1210	75	1904	71	2856	75	3808	88
WHS16	FLAT		845	74	1243	77	1982	73	2973	78	3964	92
	DOMED		822	72	1209	75	1902	70	2854	75	3805	88
WHS18	FLAT		843	74	1240	77	1978	73	2967	78	3956	92
	DOMED		819	72	1204	75	1895	70	2843	75	3791	88
WHS20	FLAT		841	74	1237	77	1973	73	2959	78	3945	91
	DOMED		815	72	1199	75	1887	70	2830	74	3773	87
WHS24	FLAT		838	74	1233	77	1968	73	2952	77	3936	91
	DOMED		810	71	1191	74	1877	70	2815	74	3753	87
WHS28	FLAT		840	74	1235	77	1974	73	2961	78	3948	92
	DOMED		811	71	1193	74	1885	70	2828	74	3771	87

*Acrylic Diffuser option reduces lumens delivered and LPW

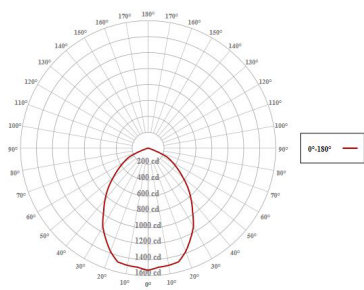
LIGHT DISTRIBUTION

DOMED LENS (DL)

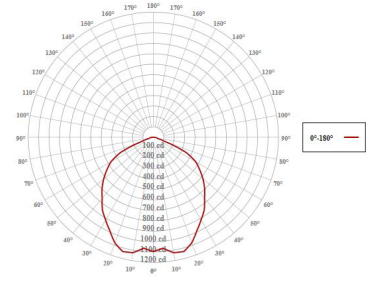


Shown above with 16" Shade (WHS16), White Interior (200-White) and 3000 Lumen (LED38)

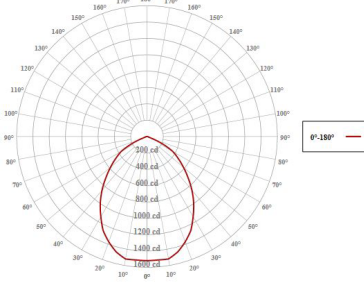
FLAT LENS (FL)



Shown above with 16" Shade (WHS16), White Interior (200-White) and 3000 Lumen (LED38)



Shown above with 20" Shade (WHS20), White Interior (200-White) and 3000 Lumen (LED38)



Shown above with 20" Shade (WHS20), White Interior (200-White) and 3000 Lumen (LED38)

SPECIFICATIONS**LED 11, 16, 27, 38, 43 LIGHT SOURCE**

LED TYPE: CREE LMH2 MODULE

INITIAL LUMENS DELIVERED: UP TO 4000 LUMENS

L90(6K) > 36,300 HOURS

AVAILABLE CCT: 2700K, 3000K, 3500K, 4000K
Custom Temperatures Available upon Request

90+ CRI

2 STEP MACADAMS ELLIPSE

EFFICACY: UP TO 93 LPW

High Efficacy Available upon Request, Consult Factory for Additional Information**DIMMING**

LED 11 & 16

**Triac Dimming at 100-120VAC, Able to Dim down to 5%.
Dependent on Specific Dimmer.
0-10V & ELV Dimming Available upon Request.**

LED 27, 38 & 43

**0-10V Dimming, Able to Dim down to 10%.
Dependent on Specific Dimmer.
Triac & ELV Dimming Available upon Request.****TRIAC & ELV DIMMING AT 230 VAC
Available by Request**

COMPATIBLE DIMMERS

Consult Factory for Additional Information on Dimming**LED 27, 38, 43 ELECTRICAL/LED DRIVER**

DRIVER TYPE: LMD400

DRIVE CURRENT: 940mA

POWER FACTOR > 0.95

EFFICIENCY: UP TO 81% TYPICAL

INPUT VOLTAGE: 120-277 VAC (SEE DIMMING SECTION)

CLASS 2 POWER SUPPLY

LED DRIVER LIFETIME: > 50,000 HOURS (@ 25 DEG C AMBIENT)

CONDUCTED AND RADIATED EMI

**Compliant with FCC CFR Title 47 Part 15 Class B (120 VAC), Class A
(277 VAC) and EN55015 (CISPR 15) at 230 VAC****CERTIFICATIONS, LISTINGS & WARRANTY**

MADE IN THE USA

**Manufactured and Hand-Crafted in Our 60,000 Square Foot Facility
Located in Titusville, FL**

CSA LISTED FOR WET LOCATIONS

Includes All Gooseneck, Stem and Flush Mounting Styles

CSA LISTED FOR DAMP LOCATIONS

Includes All Chain and Select Cord Hung Mounting Styles

LIMITED WARRANTY

**For Additional Information on Our Limited Warranty, Please See
Our Terms & Conditions**

OPERATING TEMPERATURE

-30°C to 40°C**LED 11, 16 ELECTRICAL/LED DRIVER**

DRIVER TYPE: LMD125

DRIVE CURRENT: 440mA

POWER FACTOR > 0.9

EFFICIENCY: UP TO 81% TYPICAL

INPUT VOLTAGE: 100-120 VAC (SEE DIMMING SECTION)

CLASS 2 POWER SUPPLY

LED DRIVER LIFETIME: > 50,000 HOURS (@ 25 DEG C AMBIENT)

CONDUCTED AND RADIATED EMI

**Compliant with FCC CFR Title 47 Part 15 Class B (120 VAC), Class A
(277 VAC) and EN55015 (CISPR 15) at 230 VAC****SHADE & FINISHES**

POWDER COAT SHADE

**Hand-Spun from High Purity 0.050" Thick 3003-O Temper
Aluminum**

PORCELAIN SHADE

Hand-Spun from 20 Gauge Sheet Metal

POWDER COAT FINISHES

**Polyester Powder Coat Finishes Are Electro-Statically Applied and
Thermocured**

PORCELAIN FINISHES

Applied by Hand and Fired in a High Temperature Oven

COPPER

Hand-Spun from High Purity .032 Thick C11000-O60 ETP Copper

BRASS

Hand-Spun from High Purity .050" Thick C2600-O60 Brass**MOUNTING**

STEM

**1/2" Nominal (0.84" Actual) or 3/4" Nominal (1.05" Actual) Sch 40,
6063 Aluminum Mounting Stem. Custom Lengths Available upon
Request.**

GOOSENECK

**1/2" Nominal (0.84" Actual) or 3/4" Nominal (1.05" Actual) Sch 40,
6063 Aluminum Gooseneck**

CORD

**Cord-Hung Pendants Include 7' of Standard Cord or 5' of Cloth
Cord, +/- For Socket Orientation**

CHAIN

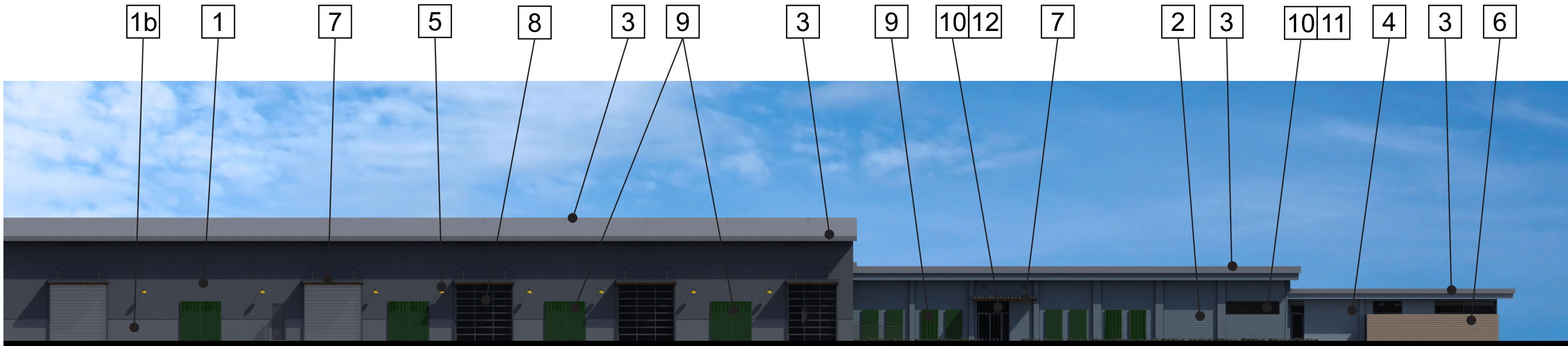
**4-Gauge Chain Complete with Quick Link for On-Site Adjustments
to Chain's Length**

MAX FIXTURE WEIGHT

10 lbs

ATTACHMENT C

MATERIAL BOARD

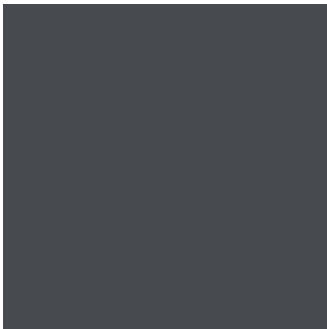


Rendering:

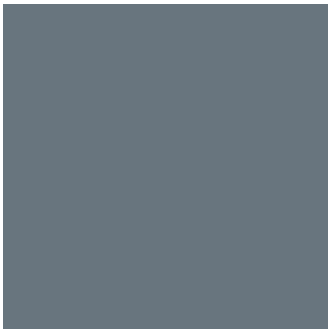
Color & Materials:



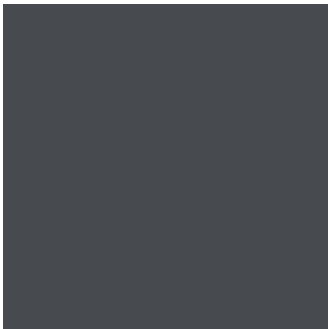
1 Existing Metal
Painted Dunn Edwards
Edge of Black DE6349



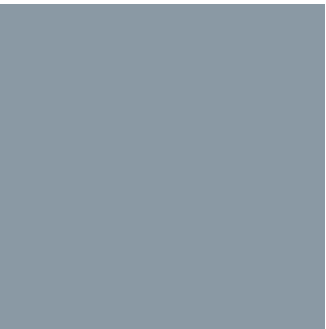
1b Existing 8x8 CMU
Painted Dunn Edwards
Black Bay DEA188



2 Existing 8x8 CMU
Painted Dunn Edwards
Long Lake DE6334



3 Fascia, Gutter & Trim
Painted Dunn Edwards
Tarnished Silver DE6355



4 Existing 8x8 CMU
Dunn Edwards
Hamilton Blue DE6333

Notes:

- 11** New Window to match existing
- 12** New Door and Window entry to match existing.



5 Exterior Gooseneck
Light Fixture
Color: Black and Yellow



6 Trex Fence
Horizontal
Color: Saddle



7 Black Steel Canopy
with Cedar Wood Slats
Gloss And Downspout
Finish: Dark Bronze



8 Aluminum and Clear
Tempered Glass Roll-up
Door



9 Greenscreen Trellis
Color: Green



10 Low 'E' Glass Mullion
System Glass Color:
Clear and Dark
Bronze Mullions