



**Agenda Item A.1**  
**DISCUSSION/ACTION ITEM**  
**Meeting Date: November 30, 2021**

---

**TO:** Mayor and Councilmembers

**FROM:** Michelle Greene, City Manager

**CONTACT:** Kristy Schmidt, Assistant City Manager

**SUBJECT:** Santa Barbara County Supervisorial Redistricting - Update

**RECOMMENDATION:**

Provide guidance to staff with regard to the City's position on the Santa Barbara County supervisorial redistricting process and consider authorizing official engagement in the County's map adoption process.

**BACKGROUND:**

Mayor Perotte and Mayor Pro Tempore Kyriaco asked that this Special Meeting be scheduled to consider the County's ongoing redistricting process for a second time. Council last considered this issue on November 16, 2021, without providing specific direction to staff to engage with the process. Council also considered a request from the City of Santa Maria's City Manager to support a specific map that reflected the Santa Maria City Council's priorities but chose not to take a position to support that map.

Every 10 years, local governments with established by-district elections use new data from the Census to redraw their electoral district lines to reflect how local populations have changed. State law requires cities and counties to engage communities in the redistricting process by holding public hearings and doing public outreach.

In the November 2018 Statewide General Election, Santa Barbara County voters approved Measure G that formed an 11-member independent redistricting commission to establish the electoral district boundaries in Santa Barbara County for the upcoming decade following receipt of the 2020 federal census data. More than 175 County residents applied to serve on the commission. Following a comprehensive process that included 10 public meetings, 11 seats were filled: two per existing district and one at-large members.

The Santa Barbara County Citizens' Independent Redistricting Commission (Commission) began meeting in January 2021 to review, discuss and deliberate on redistricting statutes, public outreach plans, and mapping tools for constituents. The primary goal when developing election districts is to draw lines that respect

neighborhoods, history, and geographical elements. The goal was to have the redistricting process completed by December 2021. The County Commission is asking for the public's help to plan, draw, and redivide the districts. Each supervisorial district will need to encompass approximately 89,300 residents. The finalized map will define the five Santa Barbara County supervisorial district borders, and these new County supervisorial districts will impact how the public will elect the Santa Barbara County Supervisors for the next 10 years. The County's current supervisorial district map is provided in Attachment 1.

## DISCUSSION:

The County's redistricting process, like other districting and redistricting processes throughout the state, has been impacted by the delay in the release of final adjusted census numbers and the need to update mapping tools once those numbers were released. The Commission rescheduled its deadlines for submission of maps to November 12 and has been moving on an aggressive schedule to finalize a district map. Over the next meetings on November 15, November 18, and November 22, the submitted maps have been analyzed and discussed to narrow the many choices down to just a few "focus maps".

The remaining process for the Commission is as follows

Date Tentative	Meeting Purpose
December 01, 2021 6 p.m.	Review Focus and Newly Submitted Maps, narrow to 2-3 focus maps, direction on map modifications.
December 04, 2021 6 p.m.	Identify preferred map. Direction on map modifications, if any.
December 08, 2021 6 p.m.	Adopt map

At this meeting with City Council, staff will present the set of maps currently under consideration and Council may choose to direct official action. This direction will be interpreted as an authorization for an official or officials of the City, such as the Mayor, Mayor Pro-Tempore, City Manager, or other designee, to provide oral and/or written comment during the Commission's process consistent with City Council's policy guidance.

Specific policy guidance Council may wish to provide includes, but is not limited to:

1. Does the City of Goleta prefer to be in a single supervisorial district or divided into two supervisorial districts? The City is currently divided into two supervisorial districts, as reflected in the map in Attachment 1.
2. If Goleta is divided into two supervisorial districts, where should the dividing line be? The current dividing line can be viewed on the map in Attachment 1.
3. Whether the City of Goleta is included in one or two districts, what non-City areas should also be included in those same district(s)? (e.g., the greater Goleta Valley, county unincorporated areas, Isla Vista, the City of Santa Barbara, the Gaviota coast, etc.)

4. Is there a particular draft "focus map(s)" that the City should support? The current set of Focus Maps, following the November 22 Commission Meeting, are included in Attachment 2.

The Santa Barbara County Citizens' Independent Redistricting Commission's website contains a wealth of information at: <https://drawsantabarbaracounty.org/>

#### **IMPACT TO THE COMMUNITY:**

The impact to the community is that the elected leadership of the City of Goleta is providing guidance to the County's Independent Commission which should enable the Commission to have specific policy goals from the City of Goleta to consider in its map adoption process.


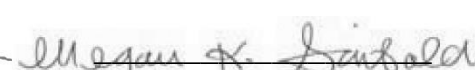

#### **ALTERNATIVES:**

The City is under no obligation to comment on the County supervisorial redistricting process. Alternatives would include not commenting during the process or commenting with fewer or additional topic areas to those identified by staff.

**Reviewed By:**

**Legal Review By:**

**Approved By:**

 Kristine Schmidt Assistant City Manager	 Megan Garibaldi City Attorney	 Michelle Greene City Manager
---	--	--

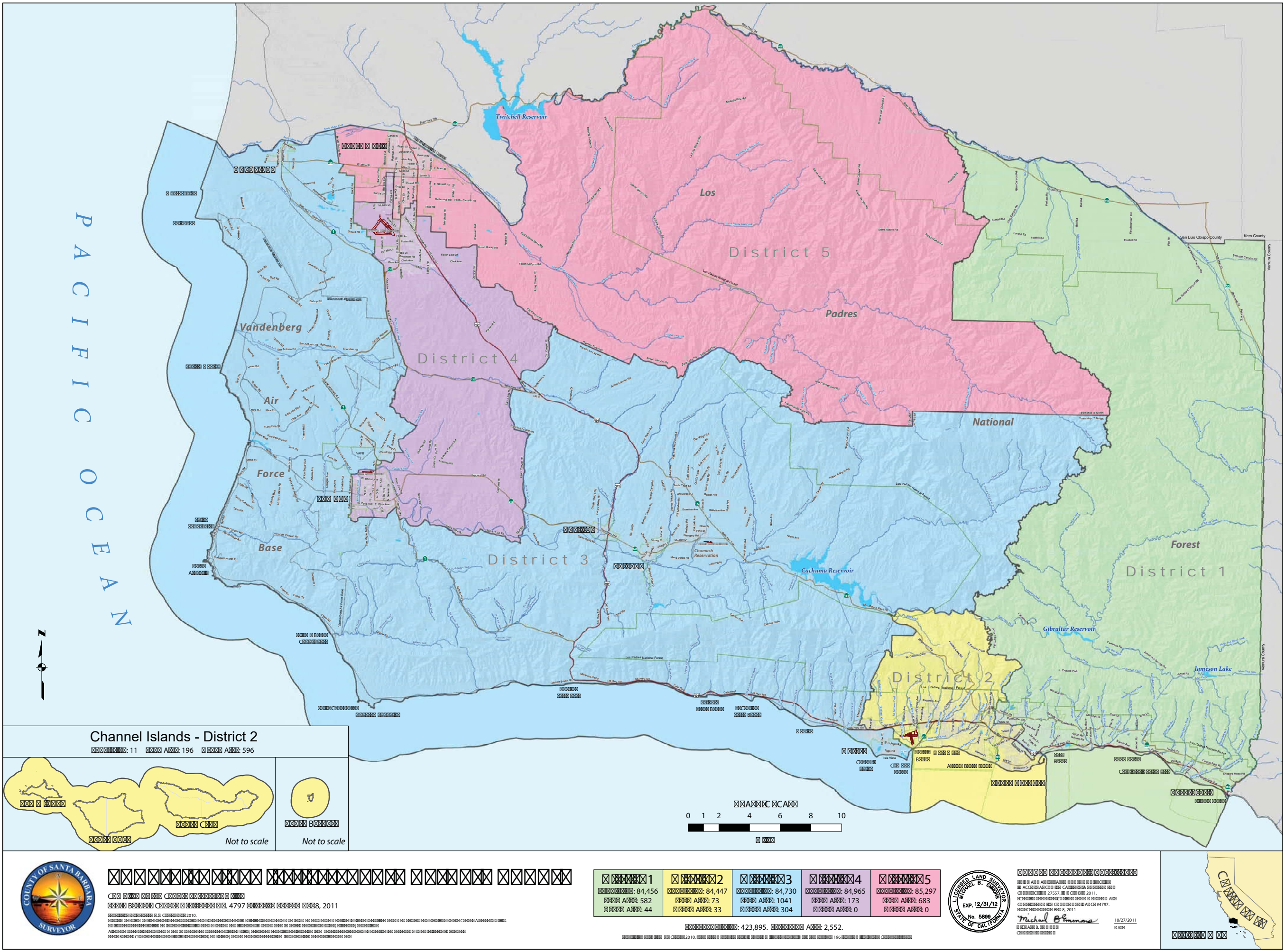
#### **ATTACHMENTS:**

1. Map of current Santa Barbara County supervisorial districts
2. Current Focus Maps with Summary

**Attachment 1**

Map of current Santa Barbara County supervisorial districts





**Attachment 2**  
Current Focus Maps with Summary

# Focus Map Summary

Attachment 2

(Excerpted from NDC presentation at County Commission's 11/22/2021 Meeting)

MAP #	408B	801C	818	821B	822
Pop. Dev	9.00%	4.90%	4.70%	2.70%	0.60%
D1 L CVAP	22%	26%	24%	24%	24%
D2 L CVAP	24%	16%	21%	20%	21%
D3 L CVAP	27%	30%	28%	29%	29%
D4 L CVAP	32%	29%	29%	27%	32%
D5 L CVAP	59%	68%	67%	68%	59%
District 1	CAR,MON,SB	SB,EGV	CAR,MON,SB,CV	CAR,MON,SB	CAR,MON,SB, CV
District 2	SB,EGV, <u>GOL</u> ,IV	CAR,MON,SB, EGV, <u>GOL</u> ,SYV	SB,EGV, <u>GOL</u>	SB,EGV, <u>GOL</u>	SB,EGV,IV
District 3	EGV, <u>GOL</u> ,SYV,	IV, <u>GOL</u> ,LOM	IV,LOM,SYV	IV,LOM,VAN	<u>GOL</u> ,LOM, SYV
District 4	LOM,VAN,ORC,SM, GUA	LOM,VAN,ORC,S M,CV	LOM,VAN,ORC, SM	SYV,ORC,SM,CV	VAN,ORC,SM, GUA
District 5	SM,CV	SM,GUA	SM,GUA	SM,GUA	SM,CV
SPLIT	5	5	5	3	5

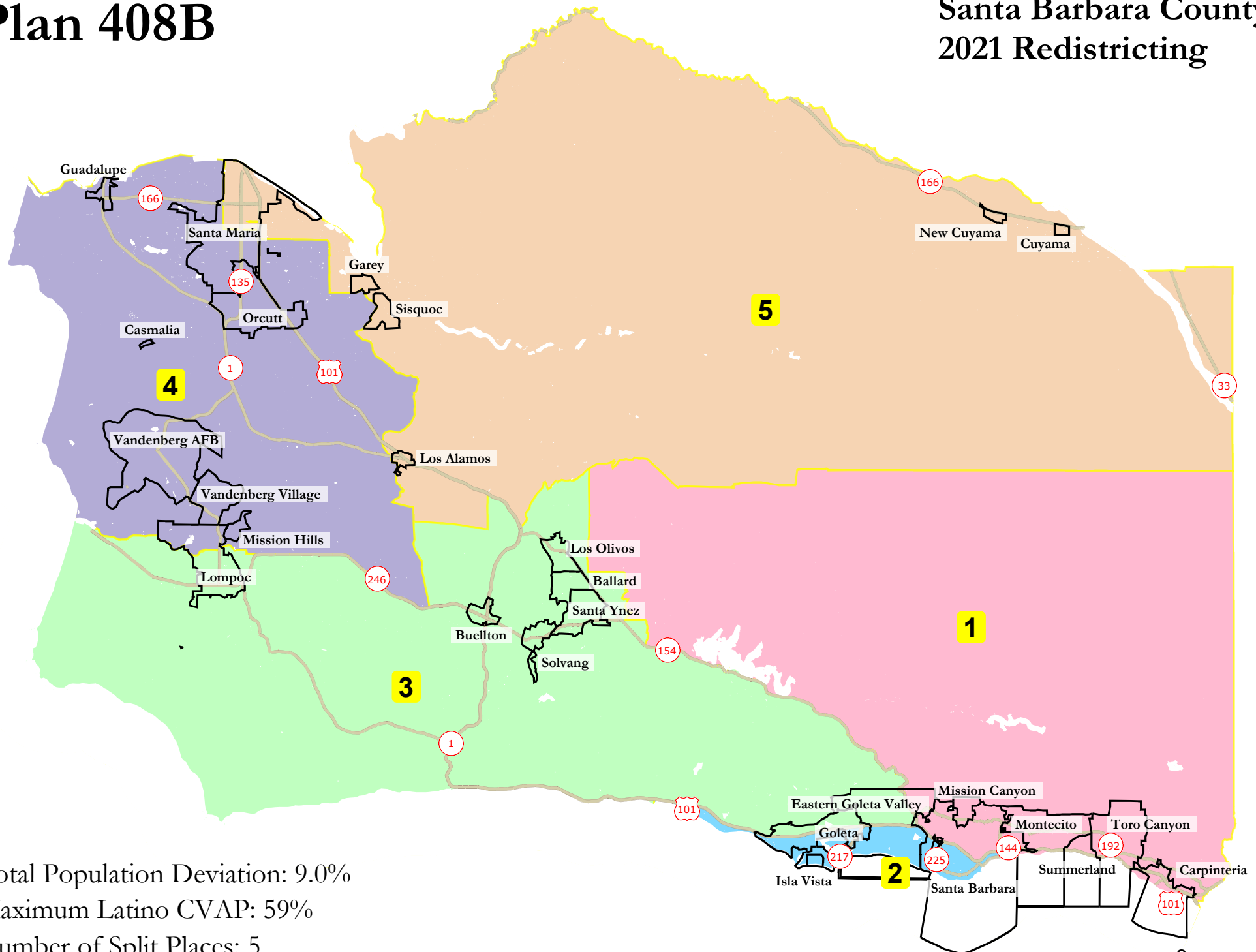
Goleta district emphasis added in red

(Notes: "L VCAP= Latino Voting Age Population; EGV = Eastern Goleta Valley; CV = Cuyama Valley. Split = areas split into 2 or more districts)



# Plan 408B

## Santa Barbara County 2021 Redistricting

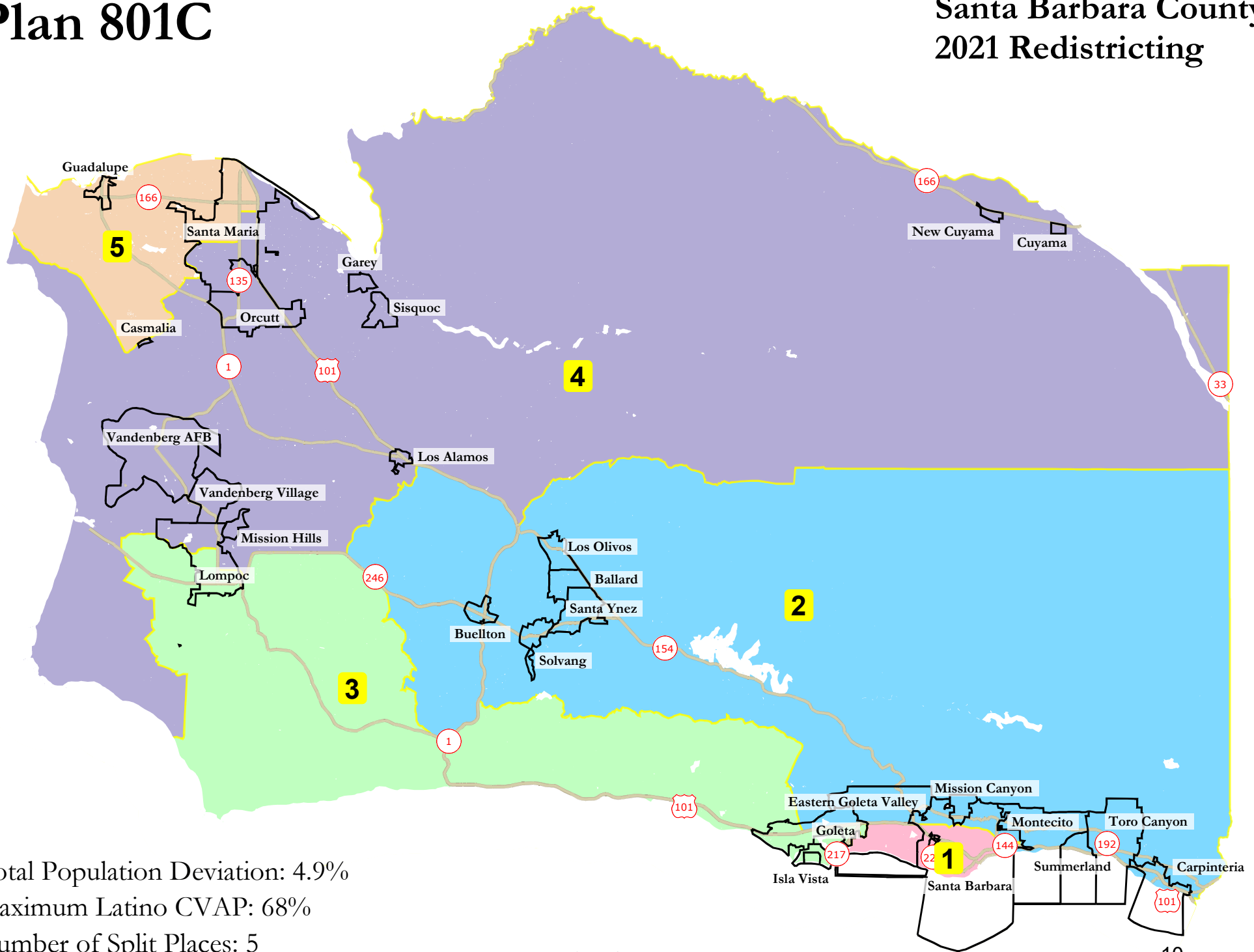


Total Population Deviation: 9.0%  
Maximum Latino CVAP: 59%  
Number of Split Places: 5

<b><i>Santa Barbara County - Plan 408B</i></b>							
<b>Category</b>	<b>Field</b>	<b>1</b>	<b>2</b>	<b>3</b>	<b>4</b>	<b>5</b>	<b>Total</b>
2020 Census	Total Population	89,139	89,883	94,175	87,370	86,137	446,704
	Population Deviation	-202	542	4,834	-1,971	-3,204	8,038
	Pct. Deviation	-0.23%	0.61%	5.41%	-2.21%	-3.59%	9.00%
Total Pop.	Hispanic/Latino	35%	34%	40%	49%	79%	47%
	NH White	56%	47%	48%	39%	14%	41%
	NH Black	1%	2%	2%	2%	1%	2%
	NH Asian/Pac.Isl.	6%	16%	7%	7%	5%	8%
	NH Native Amer.	1%	1%	1%	2%	1%	1%
Citizen Voting Age Pop	Total	65,740	64,347	60,412	54,093	34,933	279,525
	Hisp	22%	24%	27%	32%	59%	30%
	NH White	71%	62%	64%	56%	32%	60%
	NH Black	2%	3%	3%	3%	2%	3%
	Asian/Pac.Isl.	5%	10%	6%	8%	7%	7%
	Native Amer.	1%	1%	2%	2%	1%	1%
Voter Registration (Nov 2020)	Total	58,248	47,866	56,083	46,418	29,604	238,219
	Latino est.	21%	24%	26%	35%	64%	31%
	Spanish-Surnamed	20%	22%	24%	32%	59%	29%
	Asian-Surnamed	2%	4%	2%	2%	1%	2%
	Filipino-Surnamed	1%	1%	1%	2%	3%	1%
	NH White est.	77%	71%	72%	63%	38%	68%
	NH Black	2%	2%	2%	3%	2%	2%
Voter Turnout (Nov 2020)	Total	51,941	40,738	48,321	38,963	22,096	202,059
	Latino est.	19%	23%	23%	32%	59%	28%
	Spanish-Surnamed	18%	21%	21%	30%	54%	26%
	Asian-Surnamed	2%	4%	2%	2%	1%	2%
	Filipino-Surnamed	1%	1%	1%	2%	3%	1%
	NH White est.	77%	71%	72%	63%	38%	68%
	NH Black	2%	2%	2%	3%	2%	2%
Voter Turnout (Nov 2018)	Total	40,545	33,630	36,445	27,594	13,993	152,207
	Latino est.	16%	20%	17%	25%	47%	22%
	Spanish-Surnamed	15%	19%	16%	24%	45%	20%
	Asian-Surnamed	2%	5%	2%	2%	1%	2%
	Filipino-Surnamed	1%	1%	1%	1%	2%	1%
	NH White est.	80%	72%	77%	69%	48%	73%
	NH Black est.	2%	2%	2%	3%	2%	2%
Age	age0-19	19%	28%	26%	29%	35%	27%
	age20-60	52%	57%	50%	52%	51%	52%
	age60plus	29%	15%	24%	20%	14%	20%
Immigration	immigrants	19%	24%	18%	18%	37%	23%
	naturalized	45%	32%	44%	37%	23%	34%
Language spoken at home	english	70%	62%	68%	65%	31%	60%
	spanish	24%	25%	27%	30%	64%	33%
	asian-lang	2%	8%	3%	3%	3%	4%
	other lang	4%	5%	3%	1%	2%	3%
Language Fluency	Speaks Eng. "Less than Very Well"	11%	14%	14%	14%	37%	18%
Education (among those age 25+)	hs-grad	32%	31%	44%	47%	38%	39%
	bachelor	29%	26%	20%	16%	8%	20%
	graduatedegree	22%	22%	12%	9%	4%	14%
Child in Household	child-under18	22%	24%	34%	40%	51%	32%
Pct of Pop. Age 16+	employed	66%	61%	64%	66%	67%	65%
Household Income	income 0-25k	14%	22%	15%	10%	15%	15%
	income 25-50k	15%	19%	19%	19%	25%	19%
	income 50-75k	16%	14%	15%	18%	22%	17%
	income 75-200k	36%	34%	39%	45%	35%	38%
	income 200k-plus	20%	12%	12%	8%	4%	12%
Housing Stats	single family	63%	51%	77%	84%	73%	69%
	multi-family	37%	49%	23%	16%	27%	31%
	rented	51%	61%	42%	35%	50%	48%
	owned	49%	39%	58%	65%	50%	52%
Total population data from California's adjusted 2020 Census data. Citizen Voting Age Population, Age, Immigration, and other demographics from the 2015-2019 American Community Survey and Special Tabulation 5-year data. Turnout and Registration data from California Statewide Database ("Latino" figures calculated by NDC using Census Bureau's Latino undercount by surname estimate).							

# Plan 801C

## Santa Barbara County 2021 Redistricting



Total Population Deviation: 4.9%

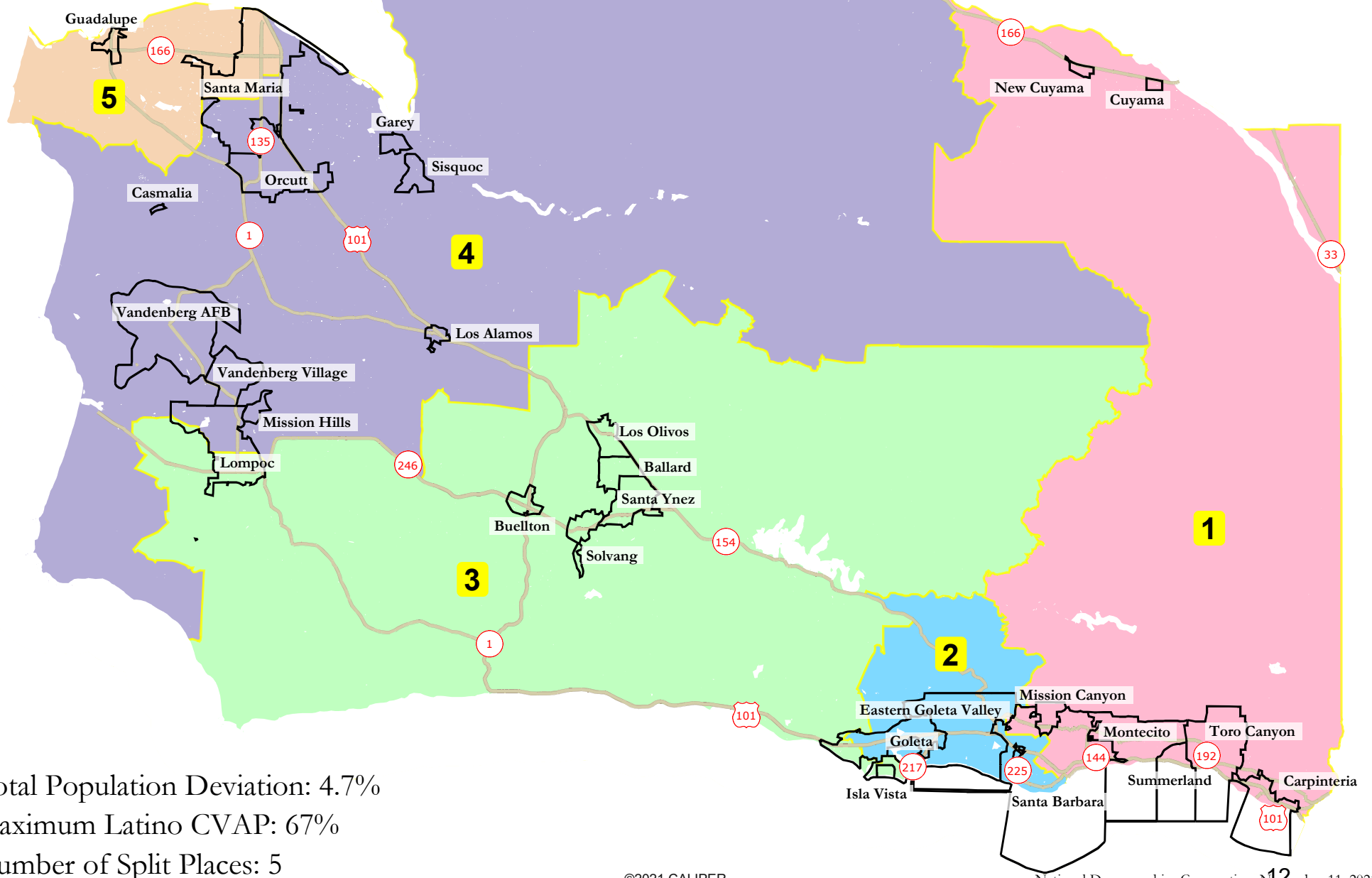
Maximum Latino CVAP: 68%

Number of Split Places: 5

<b><i>Santa Barbara County - Plan 801C</i></b>							
<b>Category</b>	<b>Field</b>	<b>1</b>	<b>2</b>	<b>3</b>	<b>4</b>	<b>5</b>	<b>Total</b>
2020 Census	Total Population	87,342	91,750	88,555	89,062	89,992	446,701
	Population Deviation	-1,998	2,410	-785	-278	652	4,408
	Pct. Deviation	-2.24%	2.70%	-0.88%	-0.31%	0.73%	4.93%
Total Pop.	Hispanic/Latino	41%	25%	43%	43%	84%	47%
	NH White	50%	66%	36%	44%	10%	41%
	NH Black	2%	1%	3%	2%	1%	2%
	NH Asian/Pac.Isl.	7%	7%	16%	7%	4%	8%
	NH Native Amer.	1%	1%	1%	2%	1%	1%
Citizen Voting Age Pop	Total	61,044	67,422	58,494	60,484	32,083	279,525
	Hisp	26%	16%	30%	29%	68%	30%
	NH White	66%	77%	53%	59%	23%	60%
	NH Black	2%	1%	4%	3%	2%	3%
	Asian/Pac.Isl.	5%	5%	12%	8%	7%	7%
	Native Amer.	1%	1%	1%	2%	0%	1%
Voter Registration (Nov 2020)	Total	53,988	64,558	40,574	51,280	27,816	238,216
	Latino est.	26%	16%	32%	32%	73%	31%
	Spanish-Surnamed	23%	14%	30%	29%	67%	29%
	Asian-Surnamed	2%	2%	4%	2%	1%	2%
	Filipino-Surnamed	1%	1%	1%	2%	3%	1%
	NH White est.	73%	82%	61%	66%	28%	68%
	NH Black	2%	1%	4%	2%	2%	2%
Voter Turnout (Nov 2020)	Total	47,308	58,522	32,653	43,609	19,965	202,057
	Latino est.	24%	14%	30%	29%	68%	28%
	Spanish-Surnamed	22%	13%	28%	27%	63%	26%
	Asian-Surnamed	2%	2%	4%	2%	1%	2%
	Filipino-Surnamed	1%	1%	1%	2%	3%	1%
	NH White est.	73%	82%	61%	66%	28%	68%
	NH Black	2%	1%	4%	2%	2%	2%
Voter Turnout (Nov 2018)	Total	36,014	46,624	26,277	31,579	11,713	152,207
	Latino est.	19%	11%	26%	22%	59%	22%
	Spanish-Surnamed	18%	11%	24%	21%	56%	20%
	Asian-Surnamed	2%	2%	5%	2%	1%	2%
	Filipino-Surnamed	1%	0%	1%	1%	3%	1%
	NH White est.	77%	85%	64%	72%	35%	73%
	NH Black est.	2%	1%	4%	2%	3%	2%
Age	age0-19	21%	21%	32%	26%	37%	27%
	age20-60	56%	46%	56%	51%	52%	52%
	age60plus	23%	33%	12%	22%	11%	20%
Immigration	immigrants	23%	16%	22%	16%	39%	23%
	naturalized	37%	52%	33%	44%	21%	34%
Language spoken at home	english	63%	77%	60%	71%	25%	60%
	spanish	31%	17%	28%	24%	71%	33%
	asian-lang	2%	2%	8%	4%	3%	4%
	other lang	4%	4%	4%	2%	1%	3%
Language Fluency	Speaks Eng. "Less than Very Well"	16%	8%	14%	11%	40%	18%
Education (among those age 25+)	hs-grad	32%	35%	43%	49%	37%	39%
	bachelor	27%	29%	16%	18%	6%	20%
	graduatedegree	20%	21%	13%	10%	3%	14%
Child in Household	child-under18	23%	25%	32%	35%	57%	32%
Pct of Pop. Age 16+	employed	69%	60%	62%	65%	68%	65%
Household Income	income 0-25k	16%	11%	25%	9%	16%	15%
	income 25-50k	16%	14%	22%	18%	27%	19%
	income 50-75k	16%	14%	15%	18%	22%	17%
	income 75-200k	37%	39%	33%	46%	34%	38%
	income 200k-plus	15%	22%	6%	9%	2%	12%
Housing Stats	single family	57%	80%	49%	88%	69%	69%
	multi-family	43%	20%	51%	12%	31%	31%
	rented	59%	33%	66%	31%	55%	48%
	owned	41%	67%	34%	69%	45%	52%
Total population data from California's adjusted 2020 Census data. Citizen Voting Age Population, Age, Immigration, and other demographics from the 2015-2019 American Community Survey and Special Tabulation 5-year data. Turnout and Registration data from California Statewide Database ("Latino" figures calculated by NDC using Census Bureau's Latino undercount by surname estimate).							

# Plan 818

# Santa Barbara County 2021 Redistricting



Total Population Deviation: 4.7%

Maximum Latino CVAP: 67%

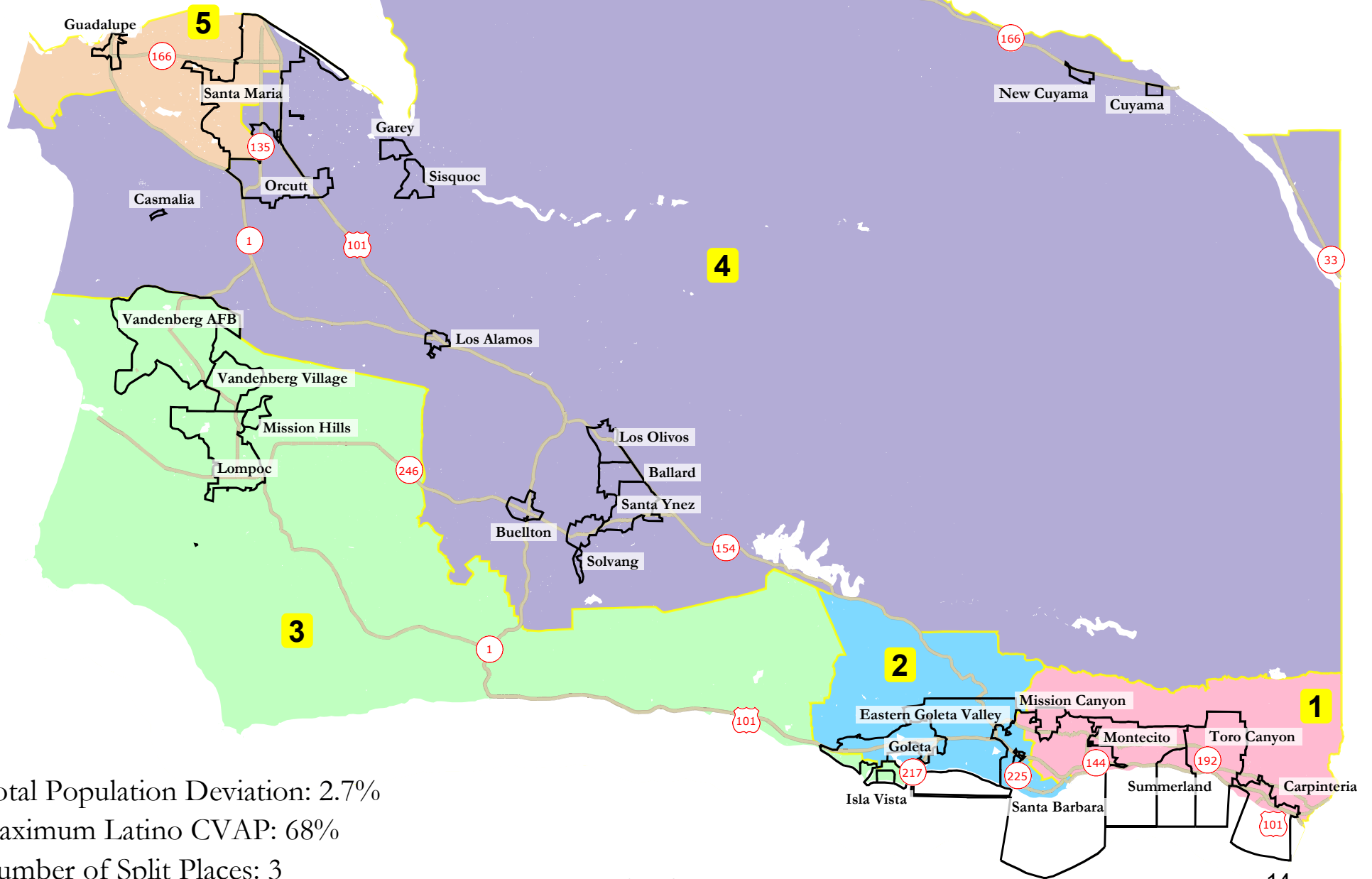
Number of Split Places: 5



<b><i>Santa Barbara County - Plan 818</i></b>							
<b>Category</b>	<b>Field</b>	<b>1</b>	<b>2</b>	<b>3</b>	<b>4</b>	<b>5</b>	<b>Total</b>
2020 Census	Total Population	88,029	87,730	88,734	91,946	90,265	446,704
	Population Deviation	-1,312	-1,611	-607	2,605	924	4,216
	Pct. Deviation	-1.47%	-1.80%	-0.68%	2.92%	1.03%	4.72%
Total Pop.	Hispanic/Latino	40%	29%	39%	43%	83%	47%
	NH White	52%	57%	43%	44%	10%	41%
	NH Black	1%	2%	3%	3%	1%	2%
	NH Asian/Pac.Isl.	5%	11%	13%	7%	4%	8%
	NH Native Amer.	1%	1%	1%	2%	1%	1%
Citizen Voting Age Pop	Total	61,202	63,055	60,270	62,876	32,123	279,525
	Hispanic	24%	21%	28%	29%	67%	30%
	NH White	69%	71%	58%	59%	24%	60%
	NH Black	2%	2%	3%	3%	2%	3%
	Asian/Pac.Isl.	5%	6%	10%	8%	7%	7%
	Native Amer.	1%	1%	1%	2%	0%	1%
Voter Registration (Nov 2020)	Total	54,837	58,833	43,598	53,006	27,945	238,219
	Latino est.	24%	19%	27%	32%	72%	31%
	Spanish-Surnamed	22%	18%	25%	30%	66%	29%
	Asian-Surnamed	2%	3%	3%	2%	1%	2%
	Filipino-Surnamed	1%	1%	1%	2%	3%	1%
	NH White est.	75%	77%	69%	66%	29%	68%
	NH Black	2%	1%	3%	2%	2%	2%
Voter Turnout (Nov 2020)	Total	48,369	52,810	35,746	44,949	20,185	202,059
	Latino est.	22%	18%	25%	29%	67%	28%
	Spanish-Surnamed	20%	17%	23%	27%	62%	26%
	Asian-Surnamed	2%	3%	3%	2%	1%	2%
	Filipino-Surnamed	1%	1%	1%	2%	3%	1%
	NH White est.	75%	77%	69%	66%	29%	68%
	NH Black	2%	1%	3%	2%	2%	2%
Voter Turnout (Nov 2018)	Total	37,336	40,883	29,552	32,435	12,001	152,207
	Latino est.	18%	15%	21%	23%	58%	22%
	Spanish-Surnamed	16%	14%	20%	21%	54%	20%
	Asian-Surnamed	2%	3%	4%	1%	1%	2%
	Filipino-Surnamed	1%	1%	1%	1%	2%	1%
	NH White est.	78%	81%	71%	72%	36%	73%
	NH Black est.	2%	1%	3%	3%	3%	2%
Age	age0-19	21%	21%	31%	27%	37%	27%
	age20-60	53%	51%	54%	51%	52%	52%
	age60plus	26%	28%	15%	22%	11%	20%
Immigration	immigrants	22%	19%	20%	15%	39%	23%
	naturalized	39%	47%	33%	47%	21%	34%
Language spoken at home	english	66%	71%	62%	71%	26%	60%
	spanish	29%	20%	27%	24%	70%	33%
	asian-lang	2%	4%	6%	4%	3%	4%
	other lang	3%	5%	4%	2%	1%	3%
Language Fluency	Speaks Eng. "Less than Very Well"	14%	11%	13%	10%	41%	18%
Education (among those age 25+)	hs-grad	33%	32%	44%	50%	36%	39%
	bachelor	27%	30%	17%	17%	6%	20%
	graduatedegree	21%	21%	13%	9%	3%	14%
Child in Household	child-under18	24%	25%	30%	36%	56%	32%
Pct of Pop. Age 16+	employed	67%	64%	60%	65%	68%	65%
Household Income	income 0-25k	15%	13%	24%	9%	16%	15%
	income 25-50k	15%	15%	22%	18%	26%	19%
	income 50-75k	17%	13%	15%	18%	22%	17%
	income 75-200k	35%	42%	32%	46%	34%	38%
	income 200k-plus	19%	18%	7%	9%	2%	12%
Housing Stats	single family	63%	68%	60%	87%	68%	69%
	multi-family	37%	32%	40%	13%	32%	31%
	rented	53%	43%	59%	32%	55%	48%
	owned	47%	57%	41%	68%	45%	52%
Total population data from California's adjusted 2020 Census data. Citizen Voting Age Population, Age, Immigration, and other demographics from the 2015-2019 American Community Survey and Special Tabulation 5-year data. Turnout and Registration data from California Statewide Database ("Latino" figures calculated by NDC using Census Bureau's Latino undercount by surname estimate).							

# Plan 821B

## Santa Barbara County 2021 Redistricting



Total Population Deviation: 2.7%

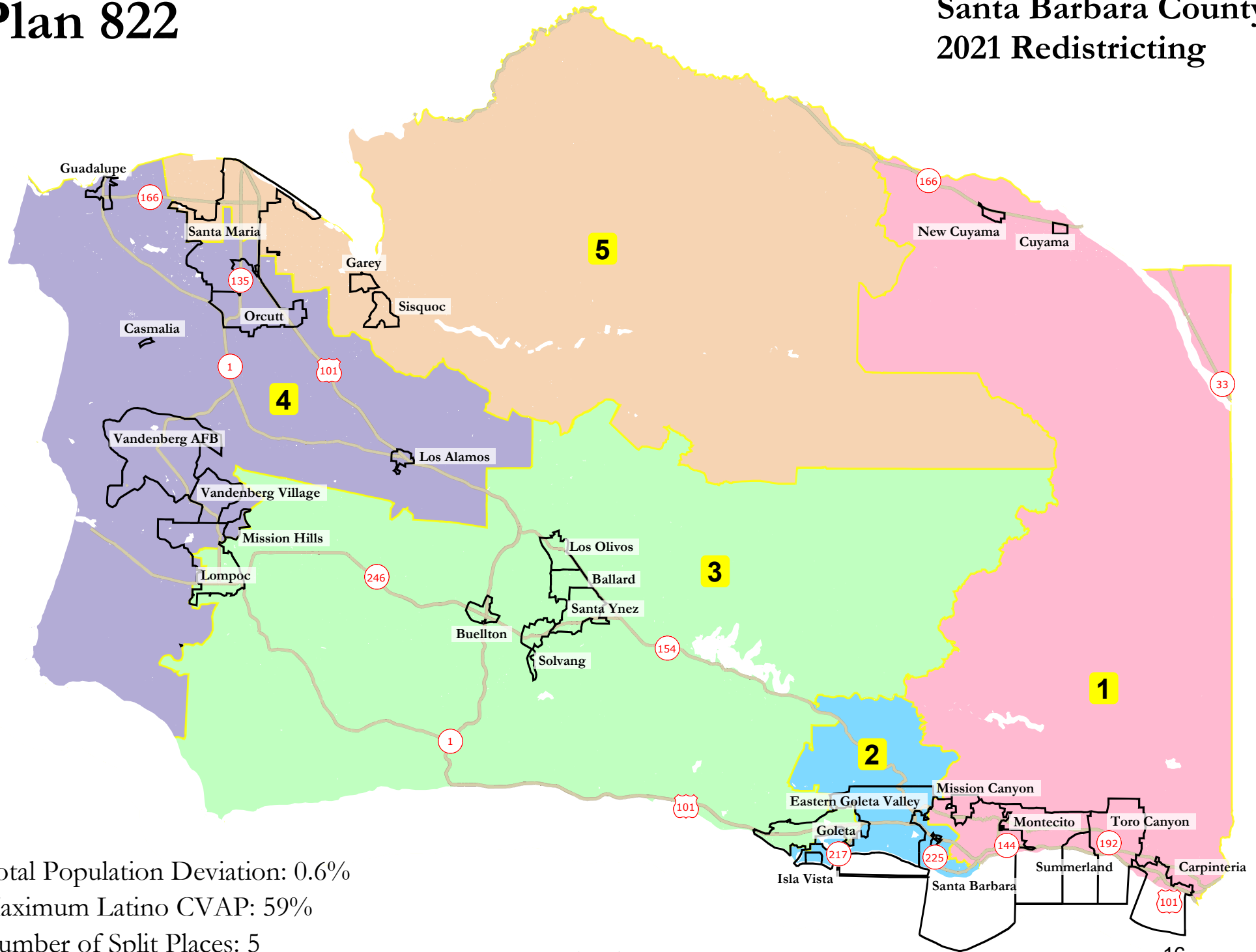
Maximum Latino CVAP: 68%

Number of Split Places: 3

<b><i>Santa Barbara County - Plan 821B</i></b>							
<b>Category</b>	<b>Field</b>	<b>1</b>	<b>2</b>	<b>3</b>	<b>4</b>	<b>5</b>	<b>Total</b>
2020 Census	Total Population	88,392	88,042	90,424	89,378	90,468	446,704
	Population Deviation	-949	-1,299	1,083	37	1,127	2,426
	Pct. Deviation	-1.06%	-1.45%	1.21%	0.04%	1.26%	2.72%
Total Pop.	Hispanic/Latino	41%	28%	42%	41%	84%	47%
	NH White	51%	59%	39%	49%	10%	41%
	NH Black	1%	1%	4%	1%	1%	2%
	NH Asian/Pac.Isl.	5%	11%	14%	7%	4%	8%
	NH Native Amer.	1%	1%	1%	2%	1%	1%
Citizen Voting Age Pop	Total	61,432	63,690	62,066	60,040	32,298	279,525
	Hispanic	24%	20%	29%	27%	68%	30%
	NH White	69%	71%	54%	63%	23%	60%
	NH Black	2%	2%	5%	2%	2%	3%
	Asian/Pac.Isl.	5%	6%	11%	7%	7%	7%
	Native Amer.	1%	1%	1%	2%	0%	1%
Voter Registration (Nov 2020)	Total	54,476	60,135	41,388	54,215	28,005	238,219
	Latino est.	25%	19%	32%	29%	73%	31%
	Spanish-Surnamed	23%	17%	29%	26%	67%	29%
	Asian-Surnamed	2%	3%	3%	2%	1%	2%
	Filipino-Surnamed	1%	1%	1%	1%	3%	1%
	NH White est.	74%	77%	62%	70%	28%	68%
	NH Black	2%	2%	4%	1%	2%	2%
Voter Turnout (Nov 2020)	Total	48,006	54,080	33,020	46,844	20,109	202,059
	Latino est.	23%	17%	29%	26%	68%	28%
	Spanish-Surnamed	21%	16%	27%	24%	63%	26%
	Asian-Surnamed	2%	3%	3%	2%	1%	2%
	Filipino-Surnamed	1%	1%	1%	1%	3%	1%
	NH White est.	74%	77%	62%	70%	28%	68%
	NH Black	2%	2%	4%	1%	2%	2%
Voter Turnout (Nov 2018)	Total	37,021	41,730	27,037	34,600	11,819	152,207
	Latino est.	18%	14%	24%	20%	59%	22%
	Spanish-Surnamed	17%	13%	23%	19%	56%	20%
	Asian-Surnamed	2%	3%	5%	1%	1%	2%
	Filipino-Surnamed	1%	1%	1%	1%	3%	1%
	NH White est.	78%	81%	65%	76%	35%	73%
	NH Black est.	2%	2%	4%	1%	3%	2%
Age	age0-19	21%	21%	32%	25%	37%	27%
	age20-60	53%	51%	55%	50%	52%	52%
	age60plus	26%	28%	13%	25%	11%	20%
Immigration	immigrants	23%	19%	19%	16%	39%	23%
	naturalized	39%	48%	32%	46%	21%	34%
Language spoken at home	english	64%	73%	63%	71%	25%	60%
	spanish	30%	19%	27%	23%	71%	33%
	asian-lang	2%	4%	7%	3%	3%	4%
	other lang	3%	4%	4%	2%	1%	3%
Language Fluency	Speaks Eng. "Less than Very Well"	15%	11%	13%	11%	40%	18%
Education (among those age 25+)	hs-grad	32%	32%	46%	48%	37%	39%
	bachelor	27%	30%	14%	19%	6%	20%
	graduatedegree	20%	22%	12%	10%	3%	14%
Child in Household	child-under18	24%	25%	33%	32%	57%	32%
Pct of Pop. Age 16+	employed	67%	64%	61%	64%	68%	65%
Household Income	income 0-25k	15%	12%	23%	10%	16%	15%
	income 25-50k	16%	14%	22%	18%	27%	19%
	income 50-75k	16%	13%	17%	16%	22%	17%
	income 75-200k	34%	43%	32%	46%	34%	38%
	income 200k-plus	19%	18%	5%	10%	2%	12%
Housing Stats	single family	61%	71%	59%	87%	69%	69%
	multi-family	39%	29%	41%	13%	31%	31%
	rented	55%	41%	61%	31%	55%	48%
	owned	45%	59%	39%	69%	45%	52%
Total population data from California's adjusted 2020 Census data. Citizen Voting Age Population, Age, Immigration, and other demographics from the 2015-2019 American Community Survey and Special Tabulation 5-year data. Turnout and Registration data from California Statewide Database ("Latino" figures calculated by NDC using Census Bureau's Latino undercount by surname estimate).							

# Plan 822

## Santa Barbara County 2021 Redistricting



Total Population Deviation: 0.6%

Maximum Latino CVAP: 59%

Number of Split Places: 5

<b><i>Santa Barbara County - Plan 822</i></b>							
<b>Category</b>	<b>Field</b>	<b>1</b>	<b>2</b>	<b>3</b>	<b>4</b>	<b>5</b>	<b>Total</b>
2020 Census	Total Population	89,202	89,277	89,670	89,149	89,406	446,704
	Population Deviation	-139	-64	329	-192	65	521
	Pct. Deviation	-0.16%	-0.07%	0.37%	-0.21%	0.07%	0.58%
Total Pop.	Hispanic/Latino	39%	26%	43%	49%	78%	47%
	NH White	52%	55%	45%	40%	14%	41%
	NH Black	1%	2%	2%	2%	1%	2%
	NH Asian/Pac.Isl.	5%	15%	8%	7%	5%	8%
	NH Native Amer.	1%	1%	1%	2%	1%	1%
Citizen Voting Age Pop	Total	62,200	70,981	54,387	55,287	36,671	279,525
	Hisp	24%	21%	29%	32%	59%	30%
	NH White	69%	67%	61%	57%	31%	60%
	NH Black	2%	2%	3%	3%	2%	3%
	Asian/Pac.Isl.	5%	10%	7%	7%	7%	7%
	Native Amer.	1%	1%	2%	1%	1%	1%
Voter Registration (Nov 2020)	Total	55,908	52,992	50,978	46,695	31,646	238,219
	Latino est.	24%	18%	28%	34%	64%	31%
	Spanish-Surnamed	22%	17%	26%	32%	59%	29%
	Asian-Surnamed	2%	4%	3%	2%	1%	2%
	Filipino-Surnamed	1%	1%	1%	2%	3%	1%
	NH White est.	75%	77%	69%	64%	37%	68%
	NH Black	2%	2%	3%	2%	2%	2%
Voter Turnout (Nov 2020)	Total	49,374	46,126	43,761	39,144	23,654	202,059
	Latino est.	22%	17%	25%	31%	59%	28%
	Spanish-Surnamed	20%	16%	23%	29%	55%	26%
	Asian-Surnamed	2%	4%	3%	2%	1%	2%
	Filipino-Surnamed	1%	1%	1%	2%	3%	1%
	NH White est.	75%	77%	69%	64%	37%	68%
	NH Black	2%	2%	3%	2%	2%	2%
Voter Turnout (Nov 2018)	Total	38,214	38,954	32,350	27,888	14,801	152,207
	Latino est.	17%	16%	19%	24%	48%	22%
	Spanish-Surnamed	16%	15%	18%	23%	46%	20%
	Asian-Surnamed	2%	4%	2%	2%	1%	2%
	Filipino-Surnamed	1%	1%	1%	2%	2%	1%
	NH White est.	79%	78%	74%	70%	46%	73%
	NH Black est.	2%	2%	3%	2%	2%	2%
Age	age0-19	21%	26%	27%	29%	35%	27%
	age20-60	53%	53%	52%	51%	52%	52%
	age60plus	27%	21%	21%	19%	14%	20%
Immigration	immigrants	22%	18%	21%	19%	36%	23%
	naturalized	39%	40%	41%	34%	25%	34%
Language spoken at home	english	66%	69%	65%	64%	32%	60%
	spanish	29%	18%	29%	32%	63%	33%
	asian-lang	2%	7%	4%	3%	4%	4%
	other lang	3%	5%	3%	1%	1%	3%
Language Fluency	Speaks Eng. "Less than Very Well"	14%	10%	15%	15%	36%	18%
Education (among those age 25+)	hs-grad	33%	31%	44%	46%	40%	39%
	bachelor	27%	30%	19%	16%	9%	20%
	graduatedegree	21%	23%	13%	9%	4%	14%
Child in Household	child-under18	23%	21%	34%	40%	50%	32%
Pct of Pop. Age 16+	employed	66%	58%	67%	66%	67%	65%
Household Income	income 0-25k	14%	21%	15%	10%	15%	15%
	income 25-50k	16%	17%	19%	19%	24%	19%
	income 50-75k	17%	12%	16%	19%	20%	17%
	income 75-200k	34%	35%	41%	43%	37%	38%
	income 200k-plus	19%	15%	10%	8%	3%	12%
Housing Stats	single family	63%	59%	72%	83%	74%	69%
	multi-family	37%	41%	28%	17%	26%	31%
	rented	53%	53%	47%	36%	49%	48%
	owned	47%	47%	53%	64%	51%	52%
Total population data from California's adjusted 2020 Census data. Citizen Voting Age Population, Age, Immigration, and other demographics from the 2015-2019 American Community Survey and Special Tabulation 5-year data. Turnout and Registration data from California Statewide Database ("Latino" figures calculated by NDC using Census Bureau's Latino undercount by surname estimate).							