



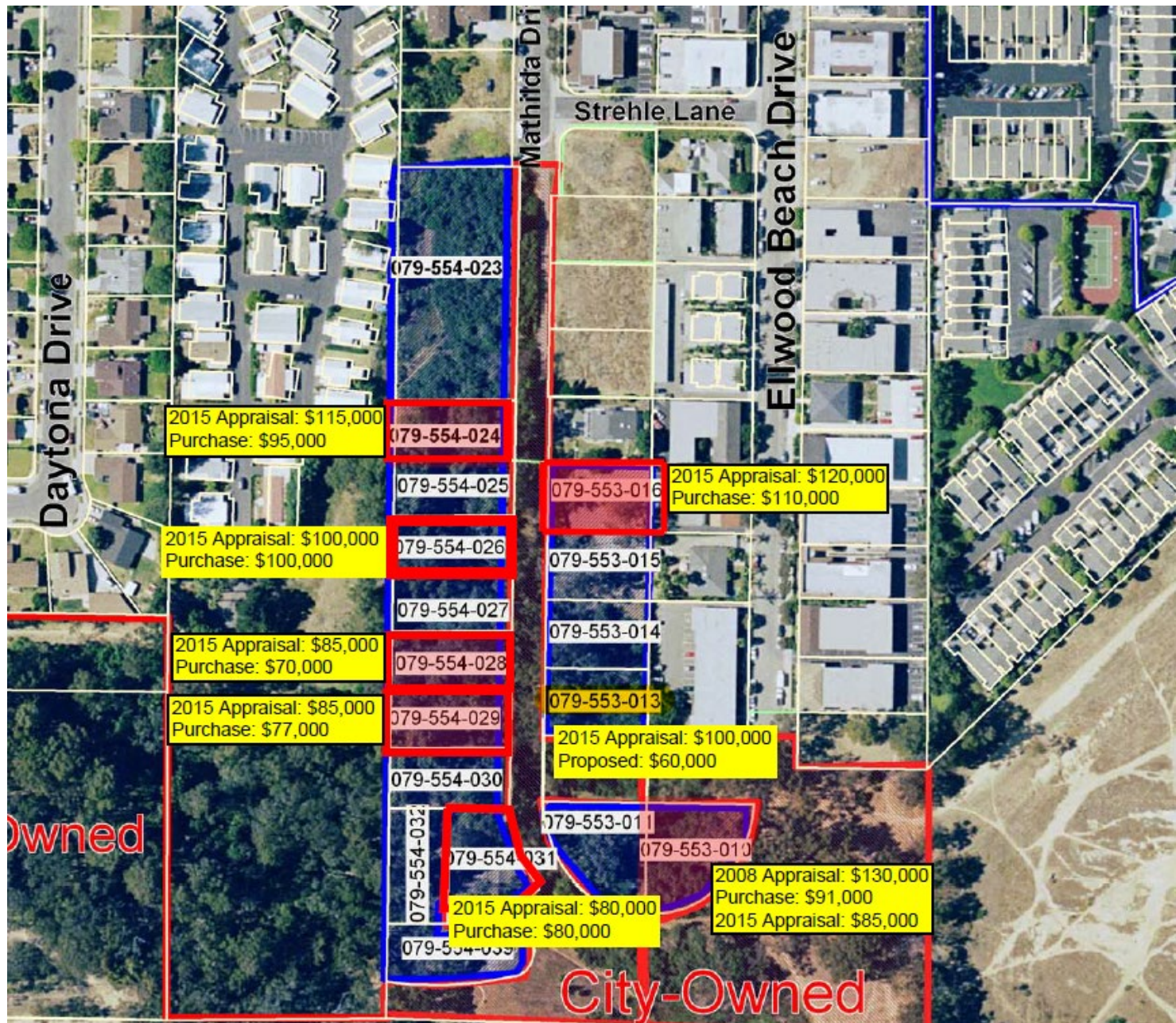
# Open Space Parcel Acquisitions Mathilda & Ellwood Beach Drives

---

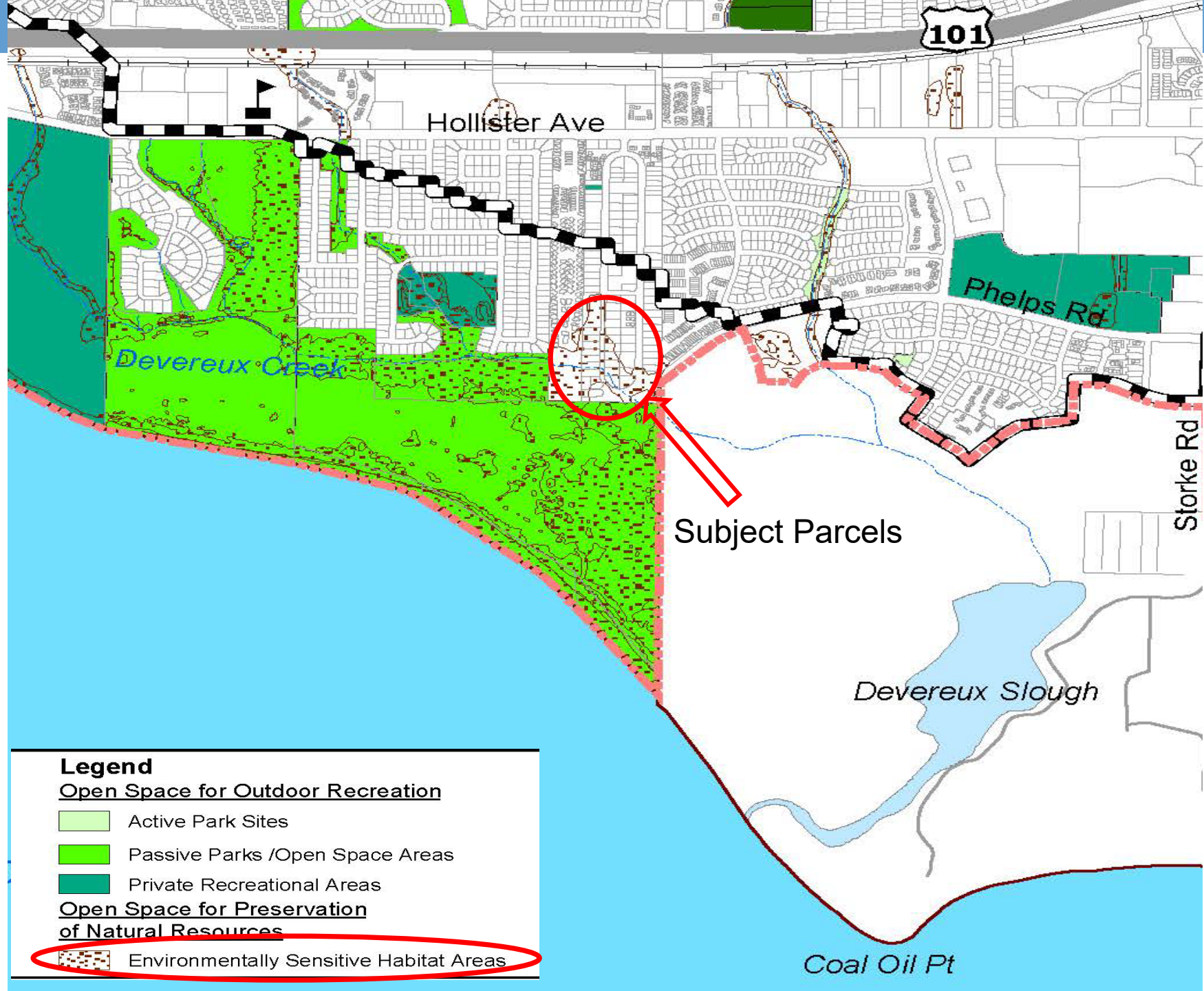
## Parks & Recreation Commission

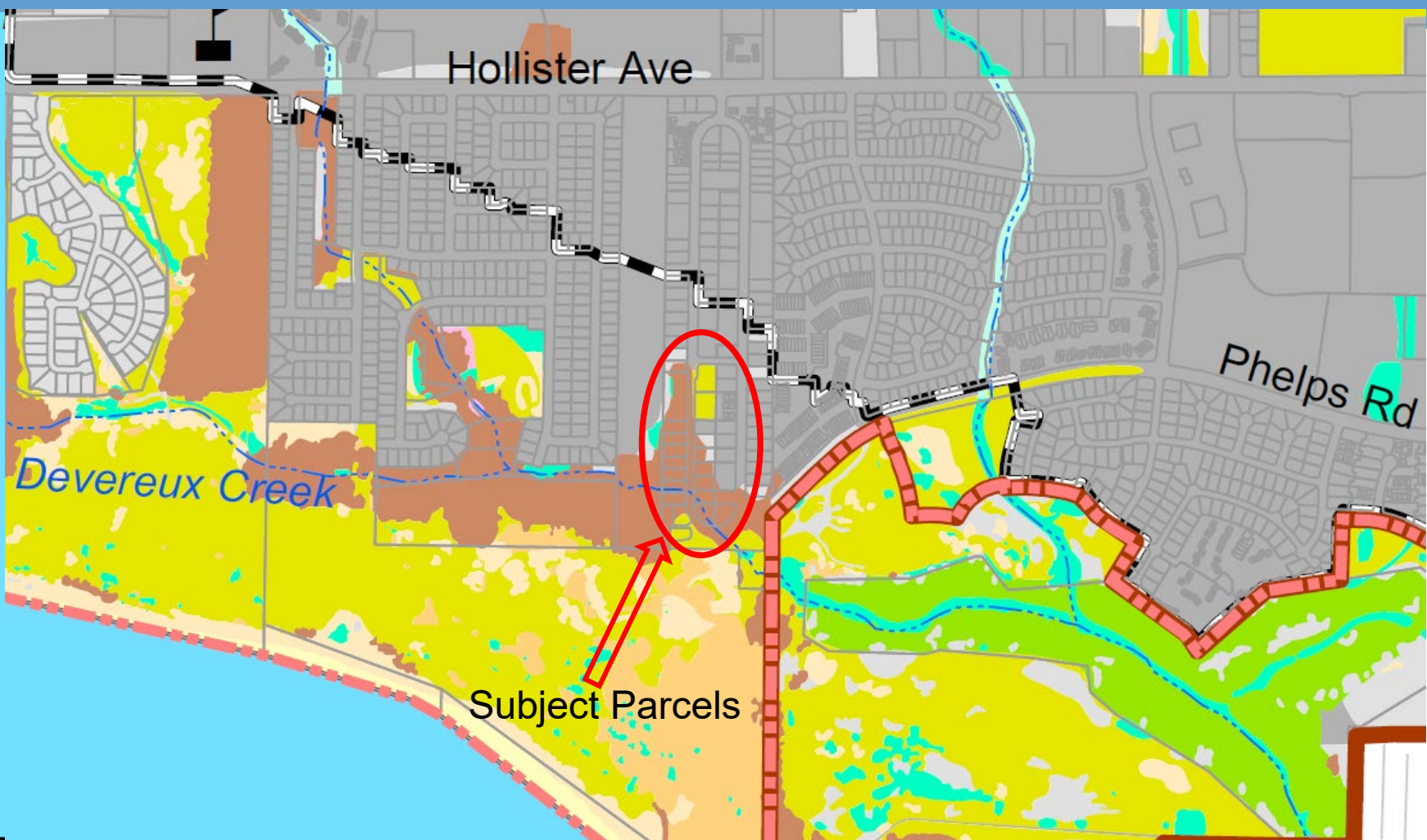
December 1, 2021

# 18 Parcels in the Open Space Overlay <sup>2</sup>









## Legend

### Habitat Types

- Orchards/Crops
- Scrub
- Developed
- Disturbed/Landscaped
- Eucalyptus Woodland

- Golf Course
- Riparian/Marsh/Vernal Habitats
- Native Grassland
- Non-native Grassland
- Native Upland Woodland/Savannah

- Open Water
- Sand
- Unvegetated Open Creek Channel

### Other Features

- Goleta City Boundary
- Coastal Zone
- Future Service Area Boundary
- Creeks
- Schools

# General Plan Goals for Ellwood Mesa

Preservation of Natural Resources: Environmentally Sensitive Habitat Areas

Open Space: Preserve natural resources by dedicating open space

Coastal Access: Expand and dedicate access to the coast

Floodplain: Limit development in floodplain



# General Plan Conformity Findings

Location: The parcels are located within the General Plan Open Space Overlay (General Plan Figure 2-1) and are in close proximity to Ellwood Mesa Open Space. Collectively they adjoin Ellwood Mesa.

Purpose: The acquisitions would allow for the expansion of public open space compatible with sensitive habitat protection. Potential for future passive trail connections.

Extent: The 18 parcels comprise the City's Open Space Overlay (General Plan Action OS-IA-1). Parcels within the overlay are identified by the General Plan for acquisition.

# QUESTIONS?

