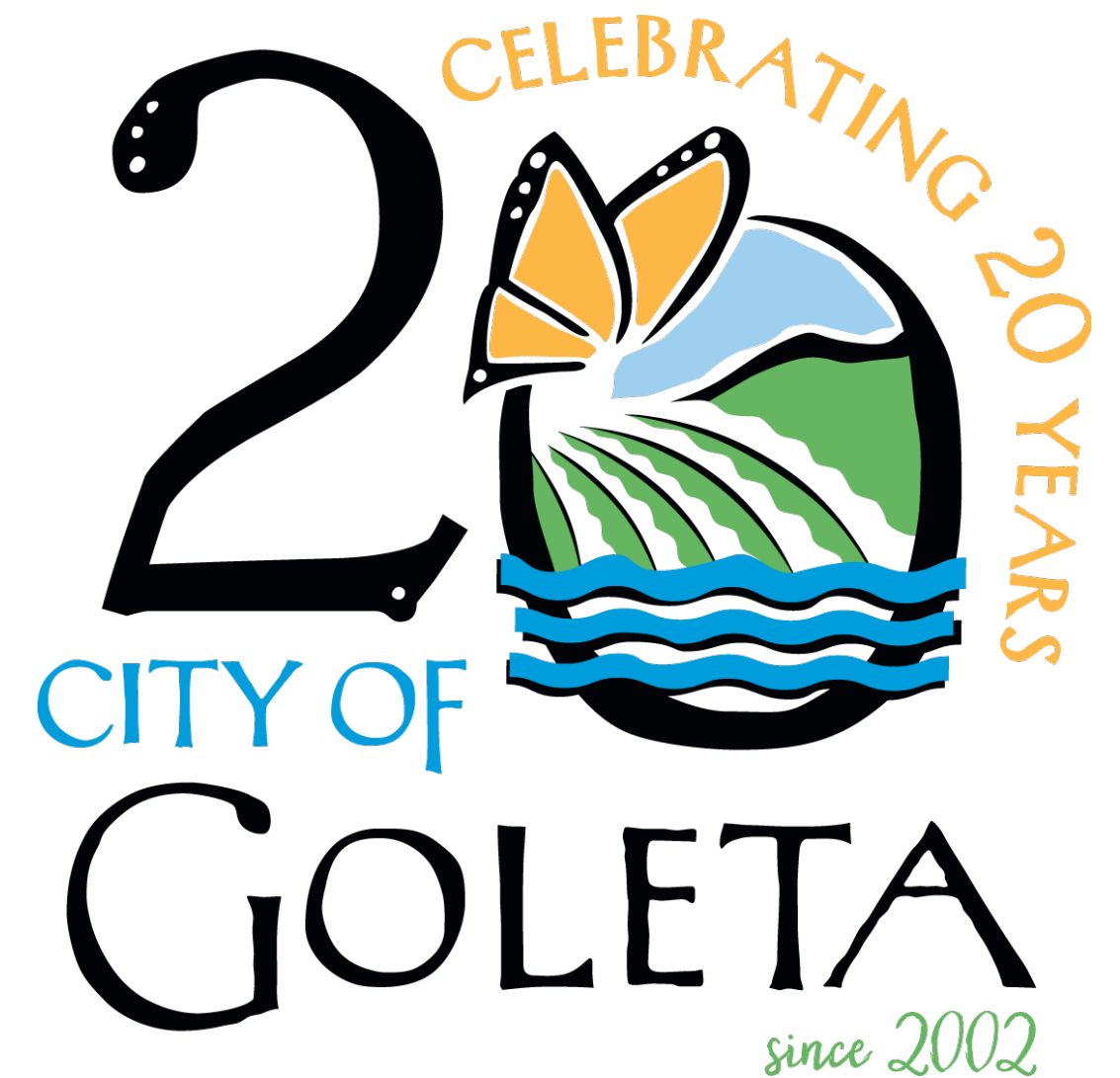


Ellwood Monarch Butterfly Grove Enhancement Project

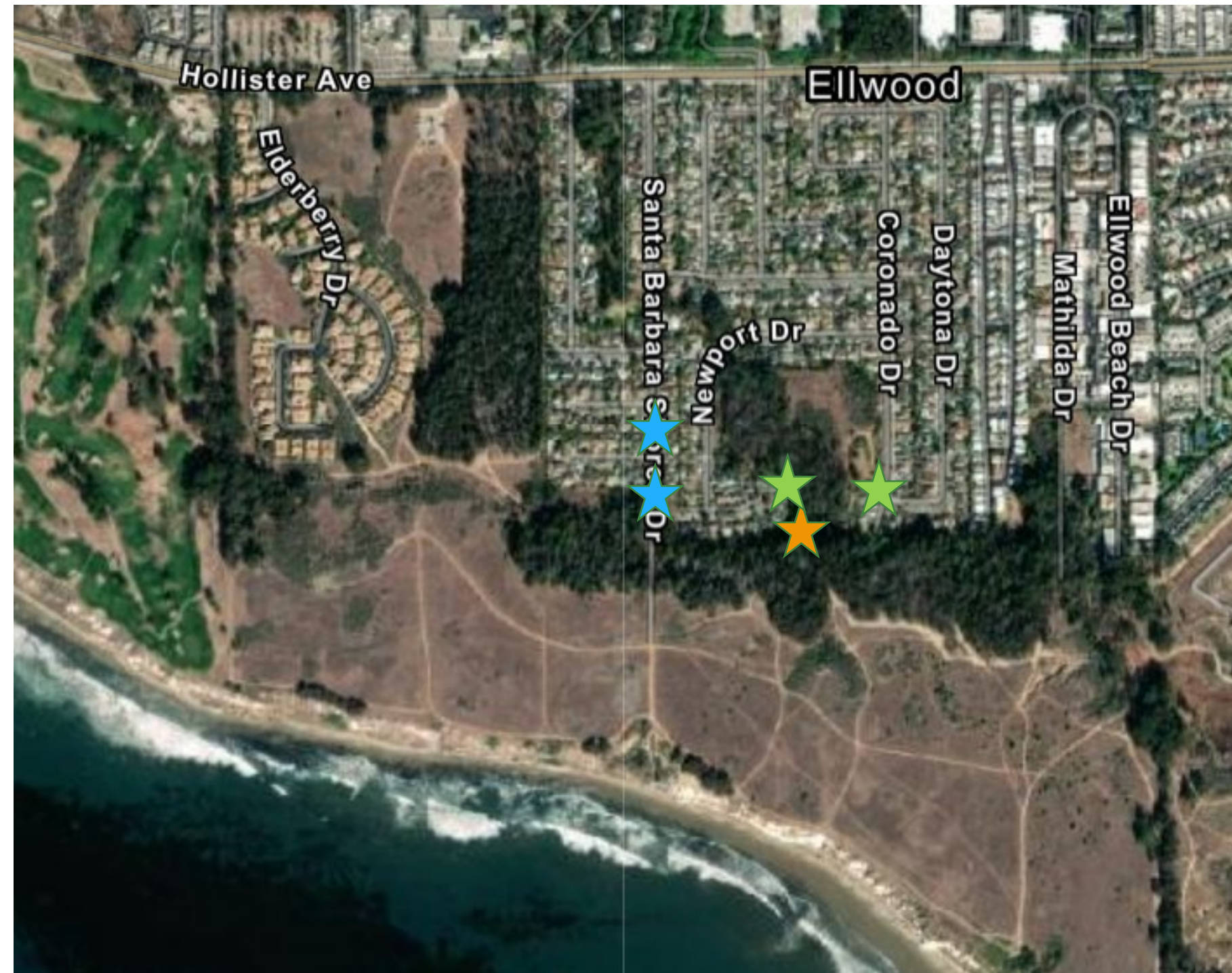
Design Review Board

May 24, 2022



Project Elements

- End of Santa Barbara Shores Dr. Improvements
- Devereux Creek Culvert Replacement
- Devereux Creek Pedestrian Crossings
- Monarch Butterfly Viewing Areas
- Open Space Visitor Serving Trails and Amenities
- Habitat Enhancement



Santa Barbara Shores Dr. Entrance

- Emergency & Maintenance Vehicle Access
- Pedestrian, Bike, & Stroller/Carts
- Stormwater Treatment
- Preserve Brick Pier Aesthetic



Santa Barbara Shores Dr. Entrance

- Emergency & Maintenance Vehicle Access
- Pedestrian, Bike, & Stroller/Carts
- Stormwater Treatment
- Preserve Brick Pier Aesthetic



Santa Barbara Shores Dr. Entrance



Devereux Creek Pedestrian Crossings

- Main Access to Butterfly Grove
- Flooded and Impassible Post-Storms
- Not ADA Compliant
- Impacts to Wetlands



Devereux Creek Pedestrian Crossings

- Raised Boardwalk
- Galvanized Steel Structure with Helical Piles
- Slip-Proof Grooved Decking
- 8-ft Wide Walkway



Devereux Creek Pedestrian Crossings

- Bamboo Composite Decking
- Weathered Driftwood Planks Aesthetic
- Slip-Proof Grooved Surface



Butterfly Viewing Areas

- Two Viewing Areas
- Eucalyptus Milled Log Benches
- Interpretive Signage Installations
- Native Soil Trail Surfaces



Site Amenities



Site Signage

