



TO: Mayor and Councilmembers

FROM: Charles Ebeling, Public Works Director

CONTACT: Marti Milan, Principal Civil Engineer

SUBJECT: Resolution Establishing School Zone on Sumida Garden Lane

RECOMMENDATION:

Adopt Resolution No. 18-__ entitled "A Resolution of the City Council of the City of Goleta, California Designating School Zone Signage on Sumida Garden Lane."

BACKGROUND:

The City has received comment from a local resident expressing concern about the lack of School Zone signage on Sumida Garden Lane in the vicinity of St. Raphael School.

DISCUSSION:

Staff recommends providing a designated "School Zone," on both sides of Sumida Garden Lane. There are currently "School Zone" signs posted on Hollister Avenue traveling in both the east and west directions but none on the Sumida Garden Lane side of the school.

The California Vehicle Code Section 22352 establishes that when approaching or passing a school building the speed limit is 25 miles per hour (mph). This is a "prima facia" speed limit and is applicable whether it is posted or not. In accordance with Goleta Municipal Code Chapter 10.01.290, a resolution by Council is required in order to establish a school zone and post signage. The signage for a school zone is made up of 2 posts. The first post includes the symbol sign of two children walking in a sign shaped like a house and a sign that has "SCHOOL". The second post includes the word "SCHOOL," "Speed Limit 25" and "When Children are Present."

Staff has performed an engineering review to determine that the signage is not required but would be helpful to inform the public of the adjacent school. It is not easily seen that it is a school since there are no visible play grounds or fields from Sumida Garden Lane. Staff recommends that signage be posted on the east side of Sumida Garden Lane just

north of Hollister Avenue for northbound traffic and on the west side of Sumida Garden Lane 500 feet north of the end of the St. Raphael School property line for southbound traffic. A resolution authorizing placement of the "School Zone" signage is required and is presented for adoption herein (Attachment 1). It should be noted that the school is in a primarily commercial area and no parking is being restricted or eliminated, there is no requirement to distribute notification of the placement of the school zone signage as the speed limit is already a requirement of the California Vehicle Code.

FISCAL IMPACTS:

The fiscal impact associated with the establishment of the proposed restricted parking is approximately \$400 for the installation of the new signage and potentially \$50 per year in annual maintenance. There is sufficient funding available in the Public Works Maintenance budget to provide for installation and maintenance of the proposed signage in the Street Maintenance account 101-5-5800-400.

Fiscal Year 2017/18				
GL Account	Adopted Budget	YTD Actual	Encumbrance	Available Budget
101-5-5800-400	\$50,000	\$0	\$20,759	\$29,241

**Pending adoption of "Resolution No. 18-__ entitled "A Resolution of the City Council of the City of Goleta, California to Establish No Parking Curb Markings (Red Curb) on the North Side of Encina Road between Fairview Avenue and Sylvan Road at Various Locations", with an estimated cost of \$4,000, approximately \$25,241 will be available.*

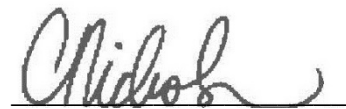
ALTERNATIVES:

Council may elect not to adopt a resolution establishing the school zone along Sumida Garden Lane and leave the street as is. This will not change the requirement for the traffic to travel this road at 25 mph.

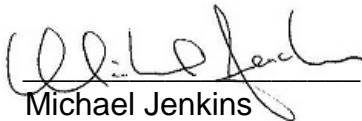
Reviewed By:

Legal Review By:

Approved By:



Carmen Nichols
Deputy City Manager



Michael Jenkins
City Attorney



Michelle Greene
City Manager

ATTACHMENT:

1. A Resolution of the City Council of the City of Goleta, California Designating School Zone Signage on Sumida Garden Lane
2. School Zone Sign Locations Map

ATTACHMENT 1

A Resolution of the City Council of the City of Goleta, California Designating School
Zone Signage on Sumida Garden Lane

RESOLUTION NO. 18-__

**A RESOLUTION OF THE CITY COUNCIL OF THE CITY OF
GOLETA, CALIFORNIA DESIGNATING SCHOOL ZONE
SIGNAGE ON SUMIDA GARDEN LANE**

WHEREAS, Section 22352 of the California Vehicle Code authorizes the City to place and maintain, or cause to be placed and maintained, such appropriate signs, as may be necessary to properly identify the School Zone warning sign which includes the speed limit and carry out the provisions of the Vehicle Code or local traffic ordinances, and

WHEREAS, an engineering analysis has been conducted concerning the establishment of school zone signage on Sumida Garden Lane; and

WHEREAS, Goleta Municipal Code Section 10.01.290 requires a Council-adopted resolution for designation of any signage and/or markings for a speed limit; and

NOW, THEREFORE, BE IT RESOLVED BY THE CITY COUNCIL OF THE CITY OF GOLETA AS FOLLOWS:

SECTION 1.

Provide School Zone signage on:

- the east side of Sumida Garden Lane approximately 50 feet north of the Hollister Avenue flowline, and
- the west side of Sumida Garden Lane approximately 500' north of St Raphael property line.

SECTION 2.

That the City Manager is hereby directed to provide for the installation and maintenance of appropriate signs and markings for the location hereinabove identified.

SECTION 3.

The City Clerk shall certify to the passage and adoption of this resolution and enter it into the book of original resolutions.

PASSED, APPROVED AND ADOPTED this 15th day of May 2018.

PAULA PEROTTE
MAYOR

ATTEST:

APPROVED AS TO FORM:

DEBORAH S. LOPEZ
CITY CLERK

MICHAEL JENKINS
CITY ATTORNEY

STATE OF CALIFORNIA)
COUNTY OF SANTA BARBARA)
CITY OF GOLETA) ss.

I, DEBORAH S. LOPEZ City Clerk of the City of Goleta, California, DO
HEREBY CERTIFY that the foregoing Resolution No. 18-____ was duly adopted
by the City Council of the City of Goleta at a regular meeting held on the 15th
day of May, 2018, by the following vote of the Council:

AYES: COUNCILMEMBERS

NOES: COUNCILMEMBERS

ABSENT: COUNCILMEMBERS

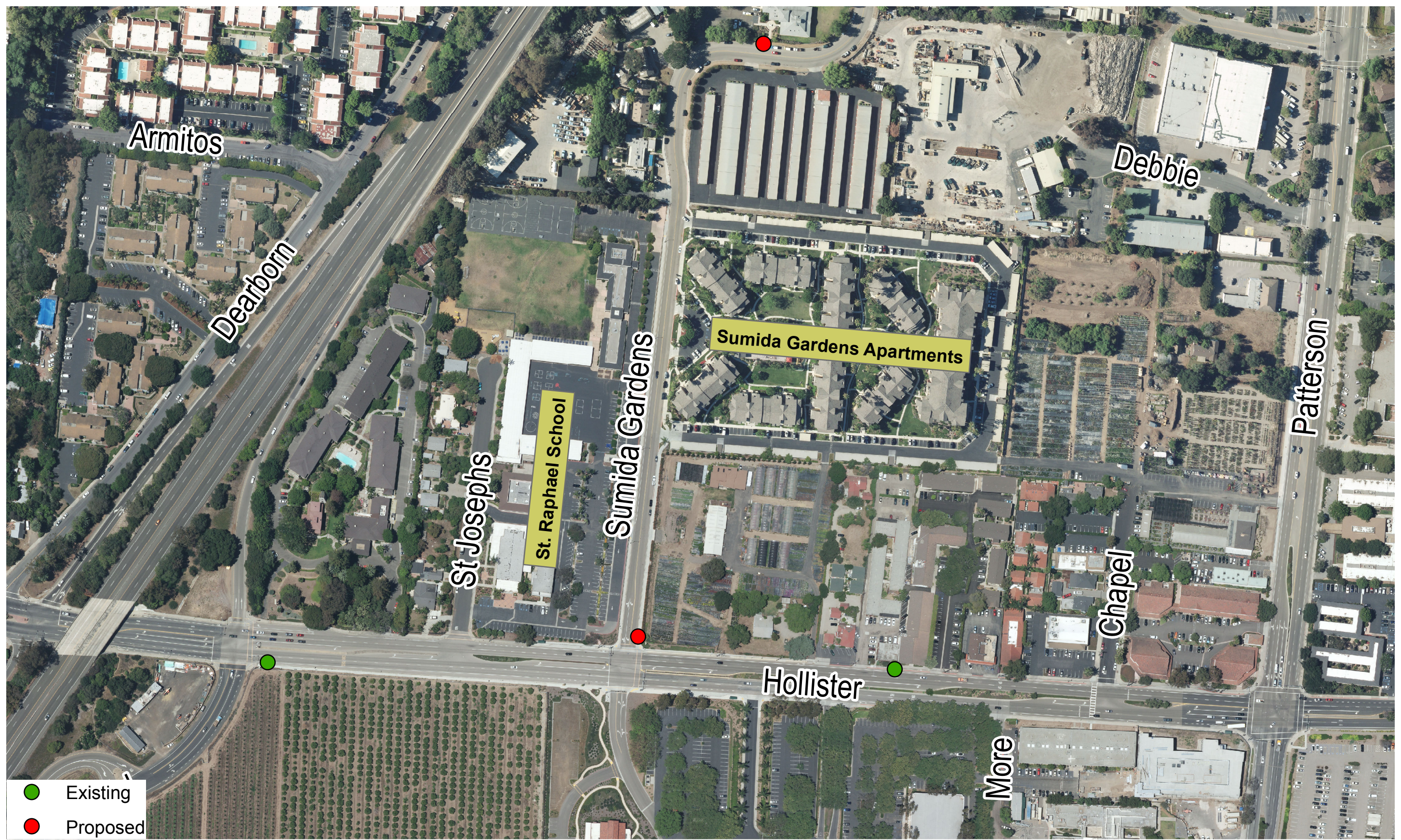
(SEAL)

DEBORAH S. LOPEZ
CITY CLERK

ATTACHMENT 2

School Zone Sign Locations Map

City of Goleta
Proposed School Zone Signs



- Existing
- Proposed