

# ELLWOOD MESA HABITAT MANAGEMENT PLAN AND IMPLEMENTATION PLAN

---



September 4, 2018

*Presentation by:*  
*Anne Wells, Advance Planning Manager*  
*Dan Meade, Althouse & Meade*



# Overview

## Presentation

- Current Conditions
- Existing Policy
- Monarch Butterfly Habitat Management Plan
- 2018 Implementation Plan – Emergency Permit
- Next Steps

## Feedback



# CURRENT CONDITIONS

---



# Current Conditions





# Current Conditions (continued)



The Ellwood Main Monarch Butterfly Grove is one of the largest monarch sites in the U.S. Monarchs arrive in the fall and stay until spring. They need the shelter these trees provide to survive the winter. You can help protect the grove by staying on the path and not touching the trees.



# Current Conditions (continued)



City requested an Emergency Permit from the CCC to close trails and remove dead / dying trees.

CCC issued Emergency Permit No. G-4-17-0048 subject to conditions.

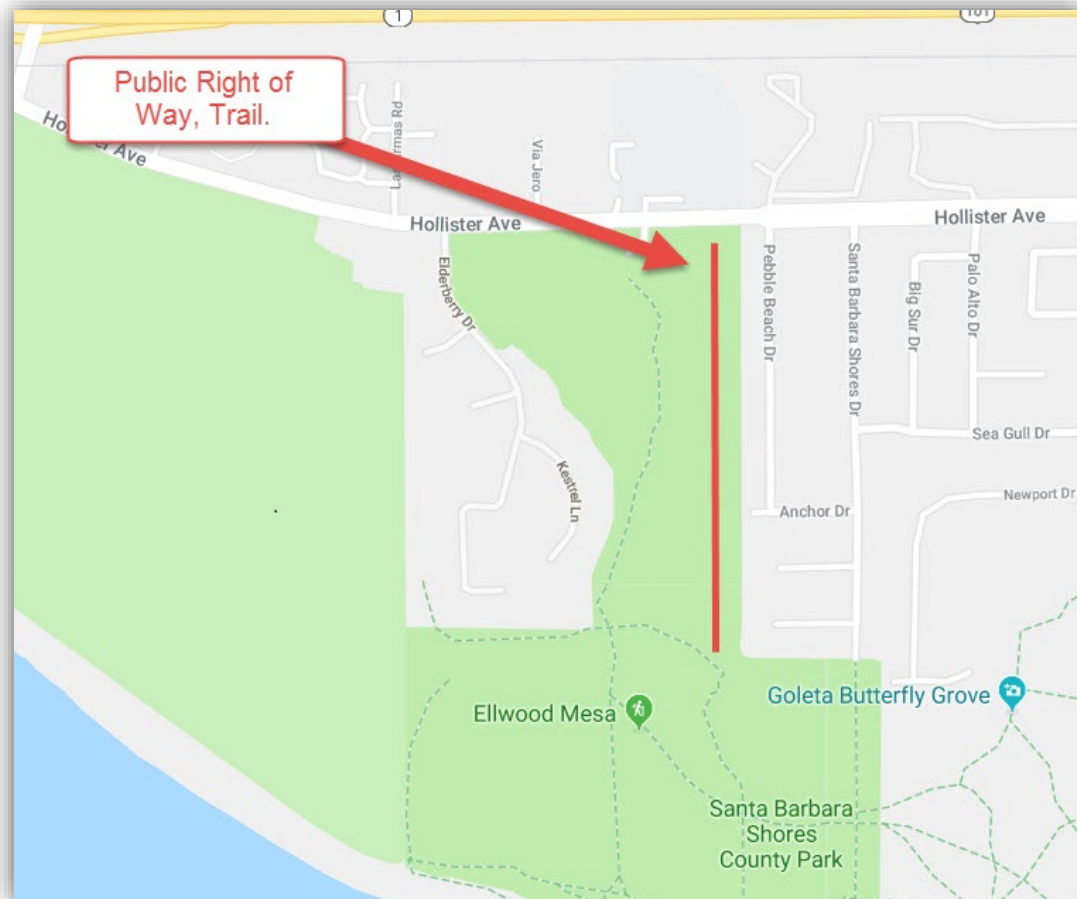
City removed 28 trees and closed trails.



# Current Conditions (continued)

## SCE Trimming in August 2018

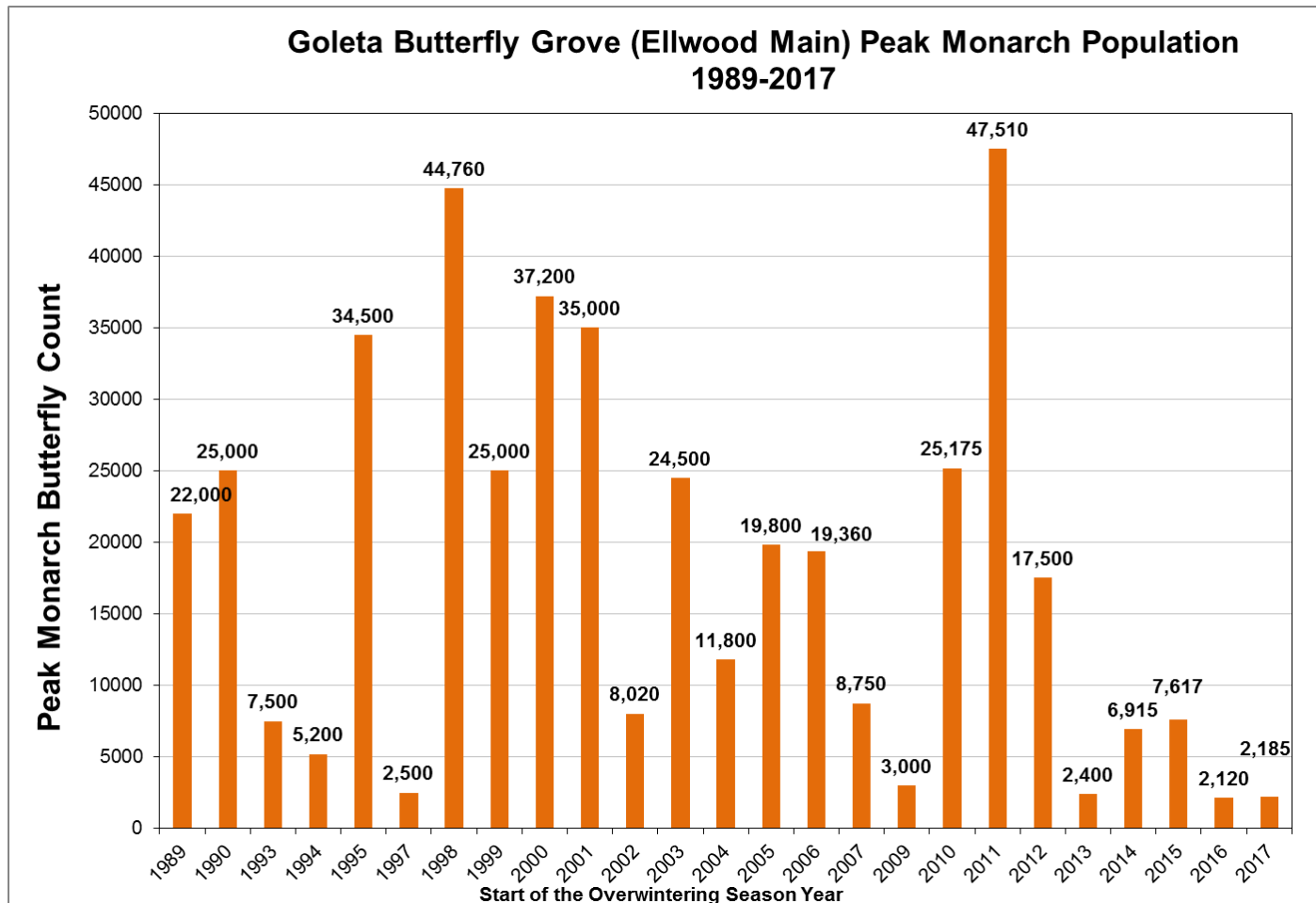
Quantity	Ellwood Mesa Eucalyptus Pruning (Coastal Commission Permit No. G-4-18-007)
1	r/o 211 Pebble Beach Dr - Span 1
2	r/o 219 Pebble Beach Dr - Span 2
2	r/o 235 Pebble Beach Dr - Span 3
4	r/o 253 Pebble Beach Dr - Span 4
3	r/o 261 Pebble Beach Dr - Span 5
5	r/o 279 Pebble Beach Dr - Span 6
1	r/o 295 Pebble Beach Dr - Span 7
1	r/o 319 Pebble Beach Dr - Span 8
2	r/o 345 Pebble Beach Dr - Span 10
3	r/o 361 Pebble Beach Dr - Span 11
5	r/o 7653 Anchor Dr - Span 12
1	r/o 7648 Pismo Cir - Span 13
	Total 30 Trees





# Current Conditions (Concluded)

Monarch overwintering population at Ellwood Main has declined.





# EXISTING POLICY

---

# Existing Policy

## General Plan – Conservation Element

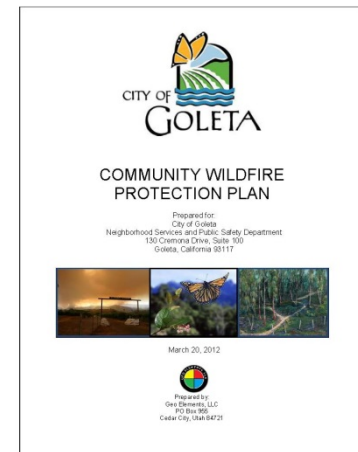
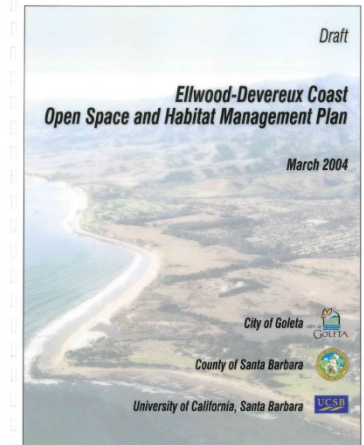
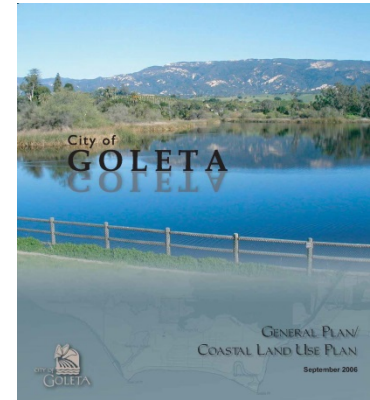
- CE Policy 4: Protection of Monarch Habitat
- OS Policy 5: Ellwood-Devereux Open Space

## Ellwood Mesa Open Space Plan

- Guides Ellwood Mesa management actions

## Community Wildfire Protection Plan

- Enhances wildfire protection with a multi-objective approach





# MONARCH BUTTERFLY HABITAT MANAGEMENT PLAN

---

# MBHMP Purpose

## **Programmatic approach:**

- Manage Ellwood habitats supporting monarchs
- Maintain / improve habitats for long-term monarch viability



Draft Ellwood Mesa/Sperling Preserve Open Space  
Monarch Butterfly Habitat Management Plan



# MBHMP Structure

## Plan includes:

- **Programs:** series of activities
- **Goals:** statement of program intentions
- **Policies:** a set of actions
- **Actions:** the process of achieving a goal



- Monarch Butterfly Aggregation Sites
- Ellwood Mesa Sperling Preserve Open Space MBHMP Boundary
- Monarch Butterfly Habitat Management Plan Coverage Area

0 500 1,000 Feet

Updated July 24, 2018 11:57 AM by JBB

# MBHMP – Organization

## 4 Groups of Programs with 22 total programs:

- Administrative (9 Programs)
- Natural Resource Management (7 Programs)
- Outreach (3 Programs)
- Monitoring, Research, and Adaptive Management (3 Programs)





# MBHMP – Priorities, Schedule, and Costs

## **Appendix 1:**

- 10 Years Cost Plan
- Programs prioritized as high, medium, or low priority
- Timing of programs vary by actions
- Annual and one-time costs assigned by action
- City staff time estimates assigned by action
- Responsible department assigned

# MBHMP - Implementation Plans

## IPs serve functions:

- Implement MBHMP actions
- Cover a specific time period
- Can include multi-year projects
- Require City Council approval



Draft Ellwood Mesa/Sperling Preserve Open Space  
Monarch Butterfly Habitat Management Plan  
2018 Implementation Plan



# 2018 IMPLEMENTATION PLAN (EMERGENCY PERMIT CCC COMPLIANCE)

---

# 2018 IP – EMP

## Coastal Commission Emergency Permit Condition No. 4:

1. Strategy for re-opening trails
2. Tree replacement
3. Habitat health assessment

*(staff report big page 158)*

STATE OF CALIFORNIA -- THE RESOURCES AGENCY

EDMUND G. BROWN, JR., Governor

### CALIFORNIA COASTAL COMMISSION

SOUTH CENTRAL COAST AREA  
89 SOUTH CALIFORNIA ST., SUITE 200  
VENTURA, CA 93001  
(805) 585-1800



### EMERGENCY PERMIT

**Date:** September 26, 2017

**Permit No.:** G-4-17-0048

**Applicant:** City of Goleta

**Location:** Ellwood Mesa, City of Goleta (Santa Barbara County)

**Work Proposed:** One-time removal of 29 eucalyptus trees on Ellwood Mesa that are dead and/or at high risk of failure adjacent to four essential public trails in order to protect life and property from imminent danger. In addition, the emergency work includes the temporary closure of several public trail segments within the eucalyptus tree groves on Ellwood Mesa (marked with signs and symbolic fencing); four trail segments (portions of trail #6, 16, 18, and 25) will be re-opened following removal of the emergency tree removals and five other trails segments (portions of trail #16, 19, 23, 24, and 25) will remain temporarily closed until a Habitat Management Plan is approved through a follow-up permit and the fall hazard posed by the remaining dead and/or dying trees near those trail segments is abated.

This letter constitutes approval of the emergency work you or your representative has requested to be done at the location listed above. I understand from the information submitted that an unexpected occurrence in the form of dead and dying eucalyptus trees at high risk of failure that are adjacent to public trails on the Ellwood Mesa and that constitute a risk to public health and safety. This occurrence requires immediate action to prevent or mitigate loss or damage to life, health, property or essential public services. 14 Cal. Admin. Code Section 13009. The Executive Director hereby finds that:

- (a) An emergency exists which requires action more quickly than permitted by the procedures for administrative or ordinary permits and the development can and will be completed within 30 days unless otherwise specified by the terms of the permit;
- (b) Public comment on the proposed emergency action has been reviewed if time allows; and

The work is hereby approved, subject to the conditions listed on the reverse.



# 2018 IP – EMP (continued)

## 1. Strategy for Re-opening Trails

- Install safety signs
- Remove trail closure signs and re-open trails
- Install educational signs
- Cancel docent-led field trips



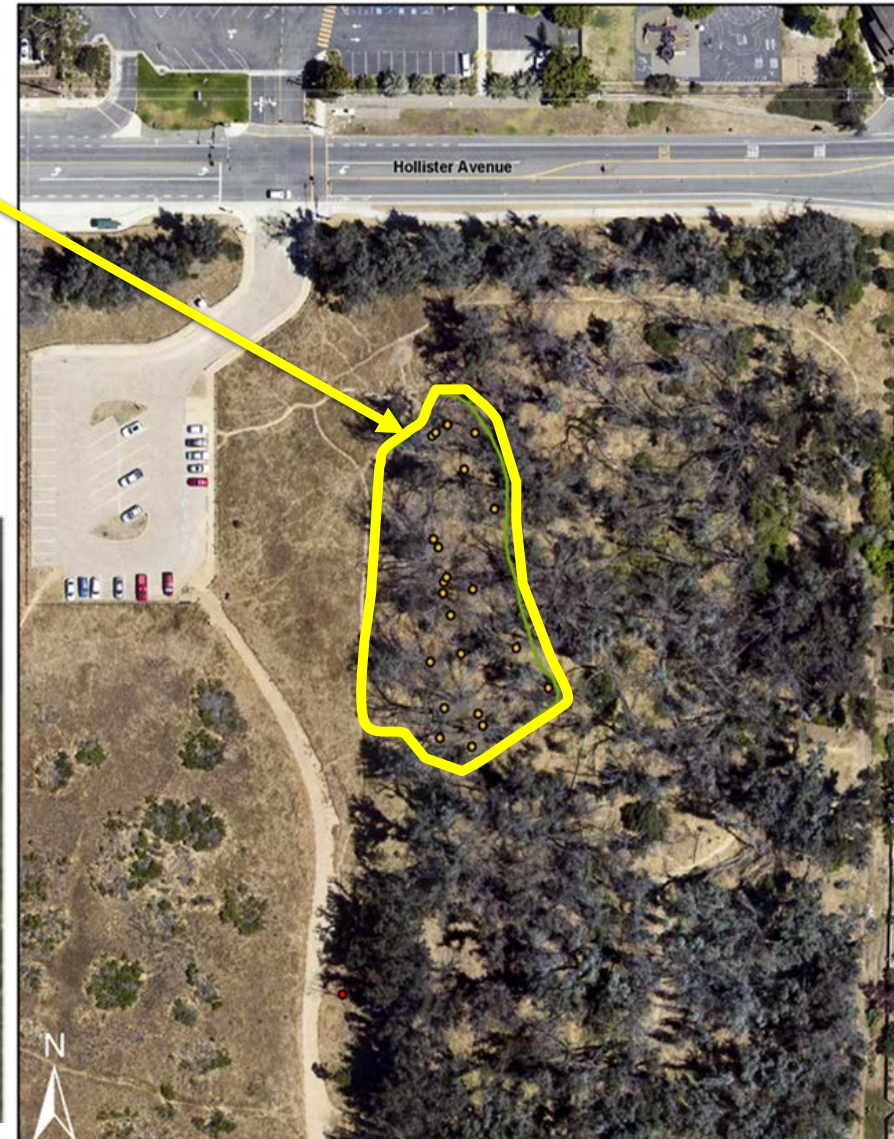
# 2018 IP – EMP (continued)

## 2. Tree Replacement

- Plant 28 eucalyptus
  - 22 red ironbark, 6 blue gum
- Weed, irrigate, monitor
- Reporting



Figure 1. Restoration Area





# 2018 IP – EMP (concluded)

## 3. Conduct Forest Health Assessment

- Annual butterfly counts
- Tree health assessment
- Pest surveys



# PUBLIC OUTREACH

---

# Public Outreach

- Council site visit
- Stakeholder meeting
- Public workshop
- Public tree advisory commission
- Public comment letters
- City Council





# NEXT STEPS

---

# Next Steps - MBHMP

- Finalize based on Council direction
- Complete CEQA
- Recommended approval by Planning Commission
- Approval by City Council
- Future IPs

# Next Steps – 2018 IP

- Submit to Coastal Commission
  - Emergency permit compliance
  - Coastal development permit review and approval
- Implementation
  - Plant the 28 replacement trees
  - Re-open trails
  - Signage
  - Butterfly counts



# MBHMP COUNCIL FEEDBACK

---

## Council Feedback on MBHMP:

- Add detail
  - Ellwood tree management history, [fire protection](#), definitions, references, footnotes, executive summary, City contact on signage
- Add actions
  - Hydrant connections, undergrounding utilities, expanded signage, ADA access, visitor information, expand eucalyptus species, support eucalyptus recruitment, tree rounds for benches
- Make clarifications
  - SE windrow, drought irrigation, pest control for infestation,

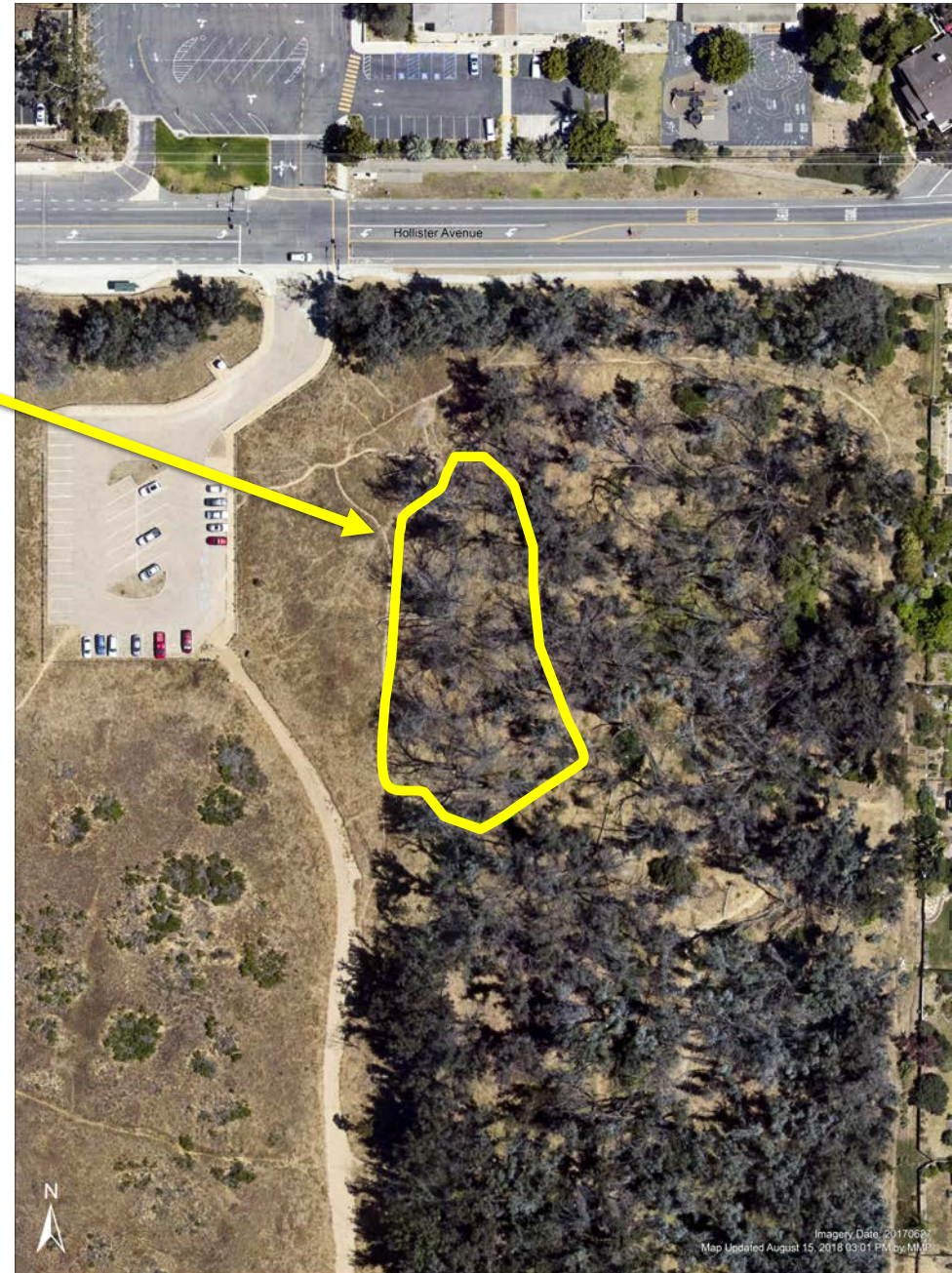
# 2018 IP – EMP COUNCIL FEEDBACK

---



## Council Feedback on 2018 IP - EMP:

- Ellwood North as the preferred restoration site
- Expand eucalyptus restoration to include some native understory
- Add action to replace trail “closure” with “caution” signs
- Authorize submittal to CCC

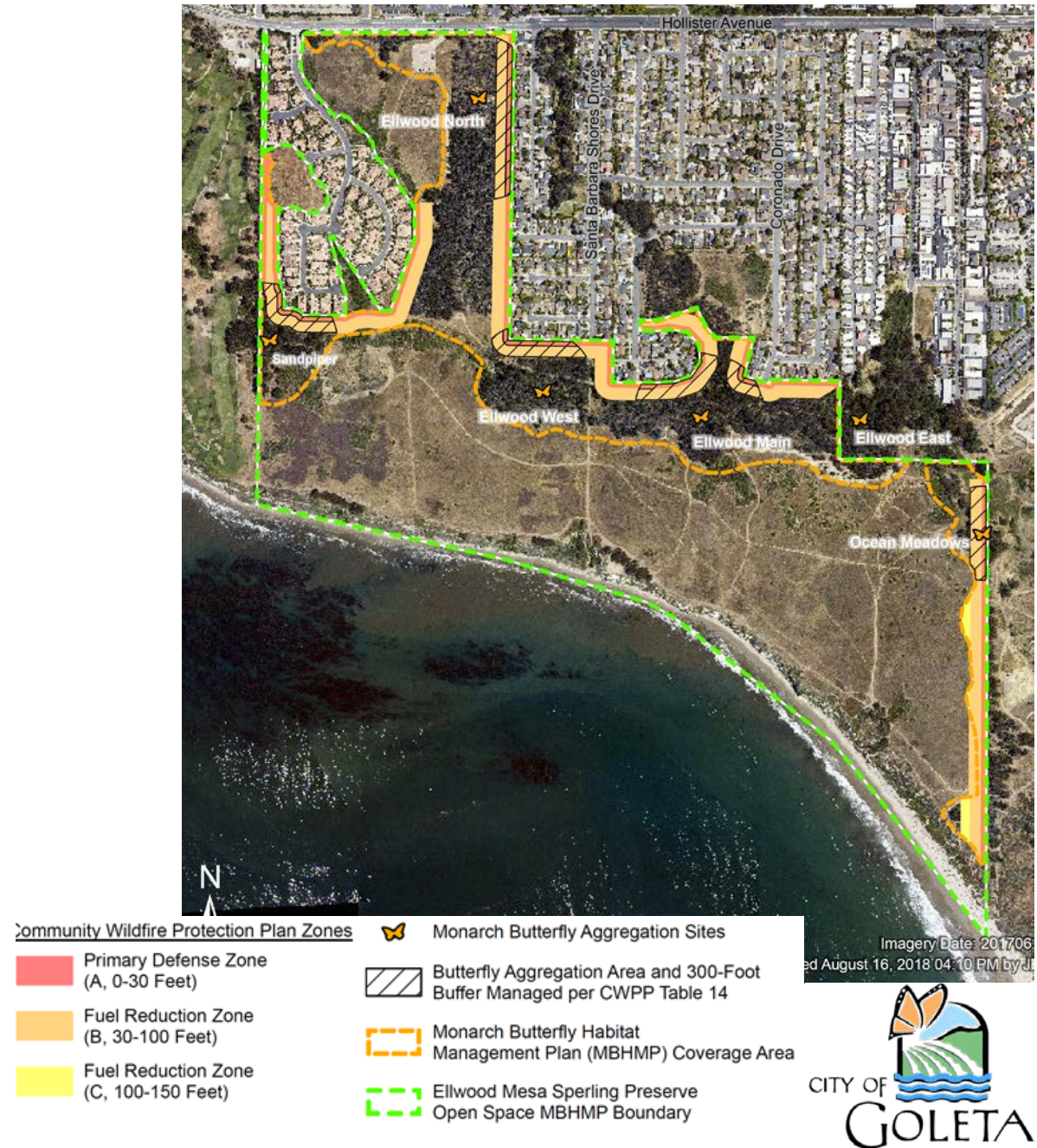


# Questions?

Comments can be emailed to  
[monarchHMP@cityofgoleta.org](mailto:monarchHMP@cityofgoleta.org)



- Tree clearance 0-30' from structures
- Clear understory debris piles 30' to 100' from structures





# MBHMP – Programs

## **Administrative Programs:**

### **1. Municipal Management Program**

- Administrative structure to oversee the programs
- Scheduling and interface with the community

### **2. Fiscal Program**

- Funding the MBHMP (includes administration of state funding)

### **3. Interagency Cooperative Program**

- Relationships with federal and state wildlife agencies

# MBHMP – Programs

## **Administrative Programs:**

### **4. Community Wildfire Protection Program**

- Fire safety practices compatible with habitat management

### **5. Trail Management Program**

- Maintain public access trails while limiting impacts on habitats and wildlife

### **6. Waste Management Program**

- Keep management area free of waste, trash, and debris

# MBHMP – Programs

## **Administrative Programs:**

### **7. Aesthetic Resources Management**

- Improve the quality of aesthetic resources

### **8. MBHMP Review, Update, and Amendment Program**

- Maintain MBHMP relevance through periodic reviews, updates, and amendments



# MBHMP – Programs

## **Administrative Programs:**

### **9. Catastrophic Events Response Program**

- Potential to occur
  - Prepare for possible catastrophic environmental events
  - Implement Programs 4, 12, and 13
- Occurring
  - Finding that the condition is a catastrophic event
  - Request City Council approval for supplemental funding
  - Assess the damage and respond with corrective action

# MBHMP – Programs

## **Natural Resources Management Programs:**

### **10. Monarch Butterfly Management Program**

- Keep monarchs returning every year
- No disturbance in aggregation sites October 1 - March 31
- Emphasizes importance of other programs to benefit monarch butterfly habitat

# MBHMP – Programs

## **Natural Resources Management Programs:**

### **11. Wildlife Habitat Management Program**

- Consider other wildlife species and their habitat needs
- Monarch butterfly and wildlife education for all personnel
- Avoid disturbance during nesting bird season
- Avoid areas with open water in Devereux Creek and tributaries
- Enhance native habitats (Program 14)

# MBHMP – Programs

## **Natural Resources Management Programs:**

### **12. Tree Management Program**

- Manages eucalyptus trees to provide
- Health and longevity
- Sustainable habitat for butterfly aggregation sites
- Safe conditions for the visiting public
- Low wildfire hazards
- Identify threats and appropriate response actions



# MBHMP – Programs

## **Natural Resources Management Programs:**

### **13. Integrated Pest Management Program**

- Seek to control or eradicate pests
- Limit impacts on monarch butterflies and habitat

### **14. Habitat Enhancement and Restoration Program**

- Enhance native plant and animal habitats
- Groves, creeks, and open areas
- Improve habitat connectivity

# MBHMP – Programs

## **Natural Resources Management Programs:**

### **15. Invasive Plant Management Program**

- Remove invasive, non-native plant species

### **16. Ecosystem-wide Management Program**

- Coordinate the 22 programs
- Management of monarch butterfly habitat
- Consider the relationship to the entire Ellwood Mesa Open Space

# MBHMP – Programs

## **Outreach Programs:**

### **17. Community Advisory and Docent Program**

- Public participation
- Monarch Docent Program
- Coordinate with Monarch Docent Coordinator

### **18. Interpretive Program**

- Interpretive signage at monarch aggregations

### **19. Education Program**

- Education experiences for K–12 students

# MBHMP – Programs

## **Monitoring, Research, and Adaptive Management Programs:**

### **20. Biological Monitoring Program**

- Monarch population counts
- Habitat assessments
- Monitoring reports

### **21. Monarch Research Program**

- Biology of monarch butterflies and their habitats
- Information helpful to MBHMP
- Research permit



# MBHMP – Programs

## Monitoring, Research, and Adaptive Management Programs:

### 22. Adaptive Management Program

- Conduct a review of management policies and actions
- Determine what needs to change
- Adjust management approaches as-needed
- Modify based on new information or techniques