



HOLLISTER/KELLOGG PARK DESIGN

JULY 18, 2017

CITY COUNCIL MEETING

PRESENTED BY: JOANNE PLUMMER, PARKS & RECREATION MANAGER
DEPARTMENT OF NEIGHBORHOOD SERVICES & PUBLIC SAFETY

OVERVIEW

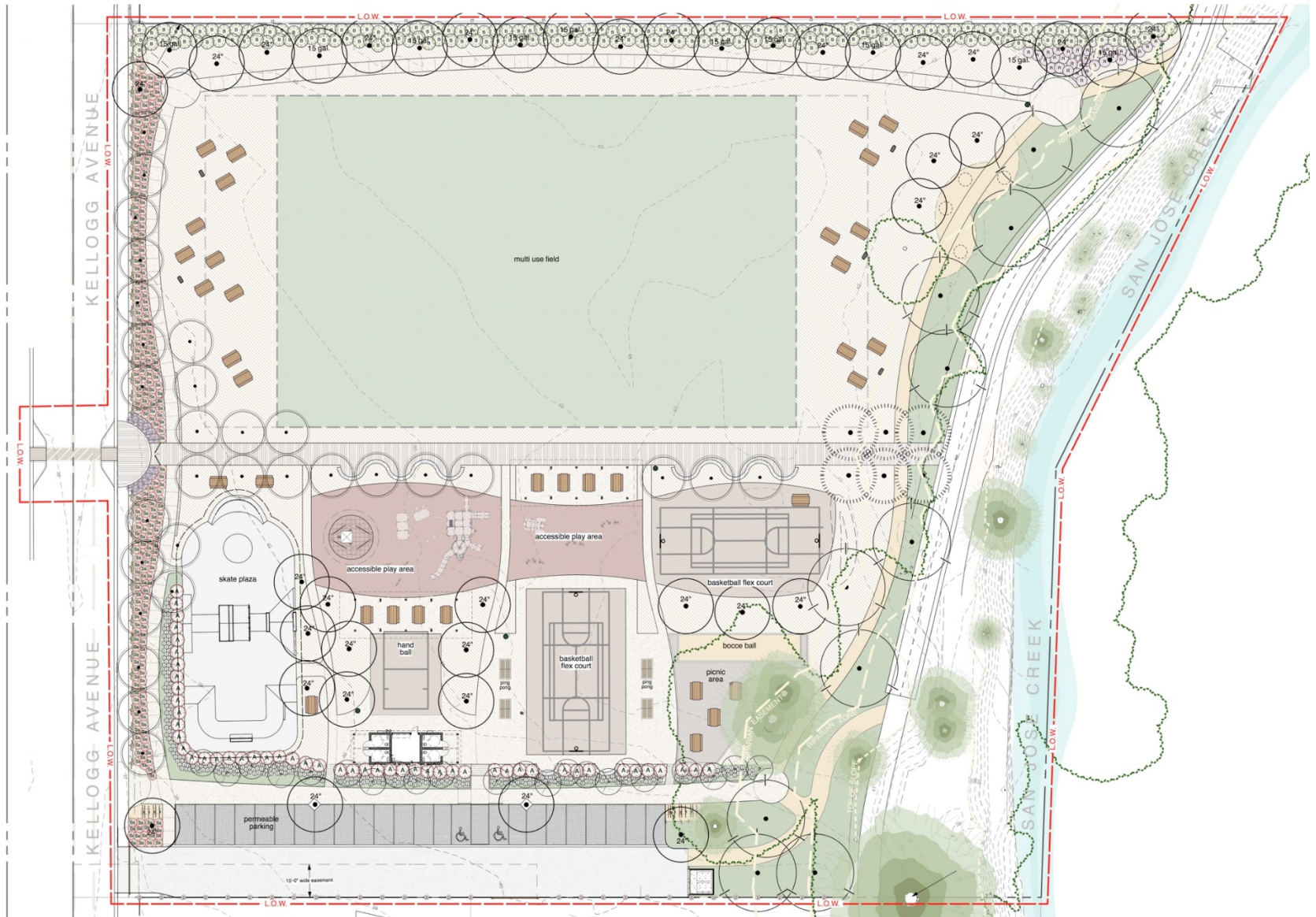
- ❖ 2012 The City Council awarded a design contract to Van Atta Associates Landscape Architects for Hollister/Kellogg Park
- ❖ 2012 & 2013 Public workshops were held to gather input for the park design
- ❖ 2015 City Council reviewed preliminary design and made recommended adjustments
- ❖ 2016 Parks & Recreation Commission reviewed and supported the final design

WATER RESTRICTIONS

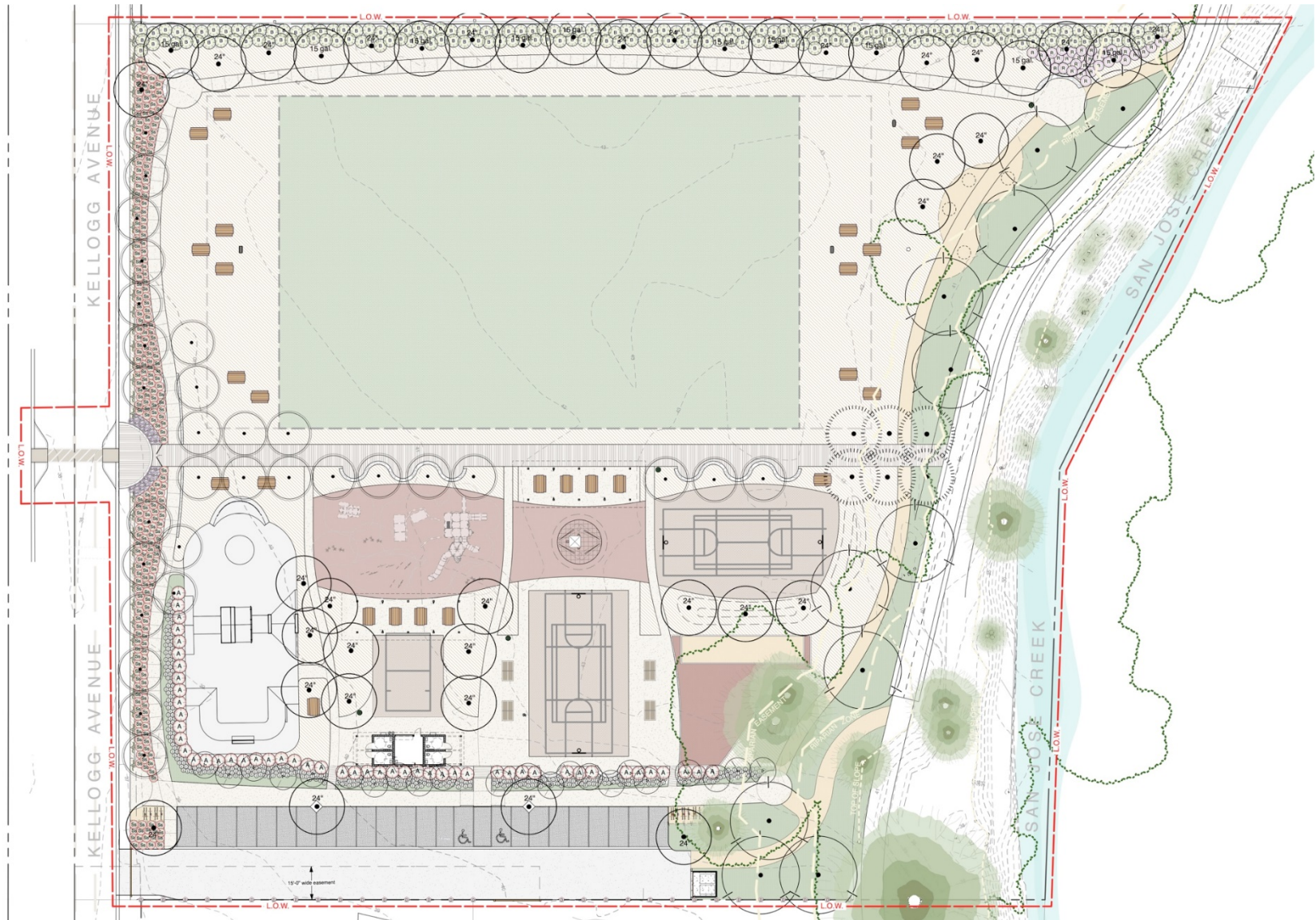
2014 Goleta Water District (GWD) imposed mandatory water restrictions as a consequence of the prolonged drought which resulted in the following:

- ❖ Application for an exemption for a new water connection since the site has historic water use
- ❖ Total amount of approved water usage for the proposed park design was reduced from 6.4 AFY to 4.6 AFY
- ❖ Design revisions for the turf area to reduce water consumption
- ❖ Design adjustment for the surrounding areas to reduce the park's total water demand
- ❖ Discussions related to the splash pad

PREVIOUS SITE PLAN



REVISED SITE PLAN



**Larger
Play Area**

**Relocated
Splash Pad**

**Soccer/Multi-
Use Field**

**Basketball/
Flex Court**

**Handball
Court**

**Basketball/
Flex Court**

Bocce Ball

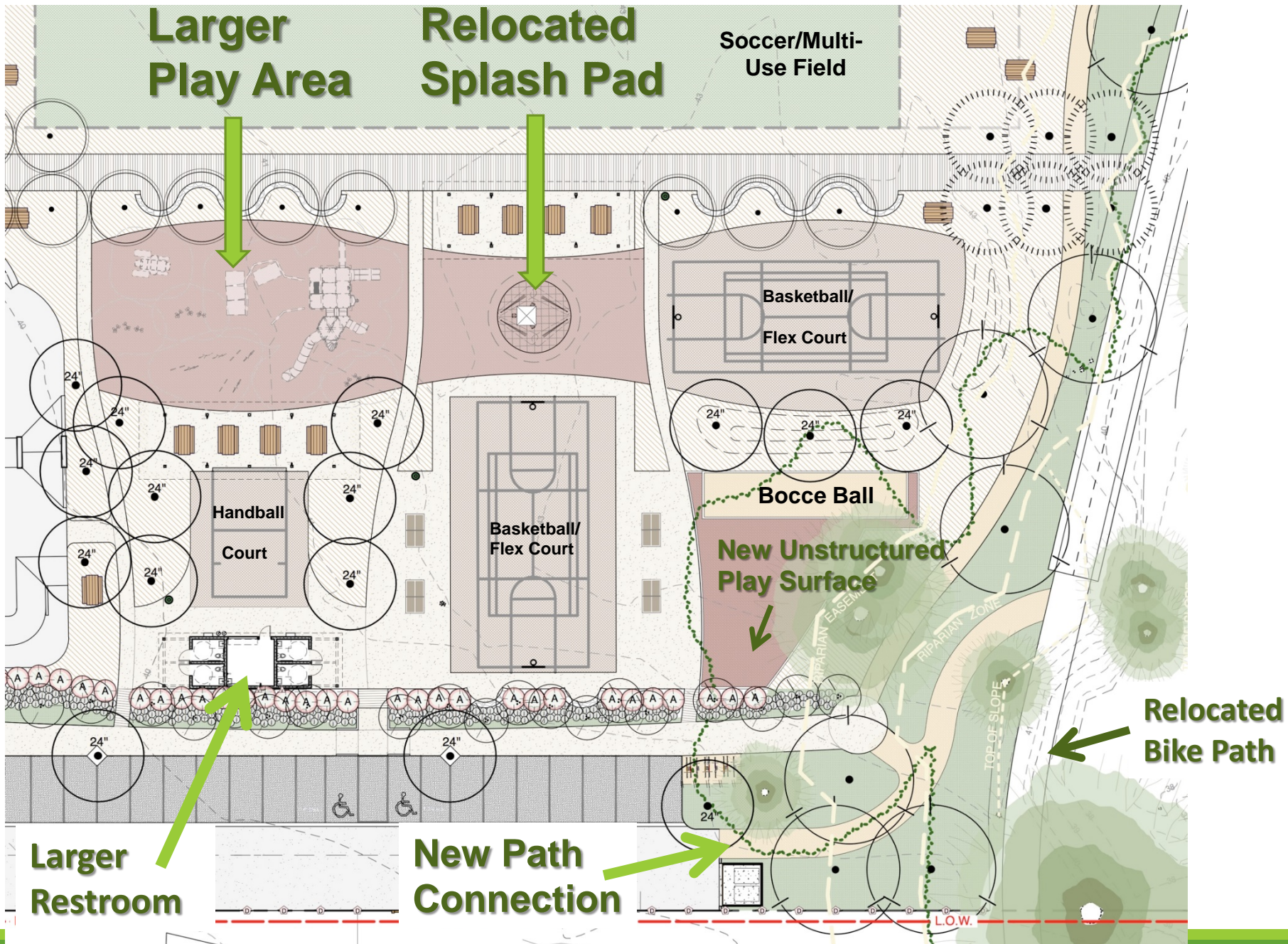
**New Unstructured
Play Surface**

**Relocated
Bike Path**

**Larger
Restroom**

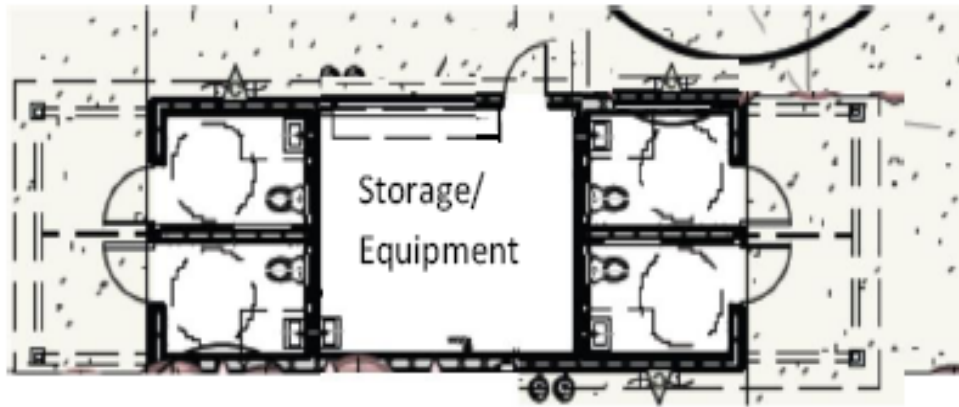
**New Path
Connection**

L.O.W.



REVISED RESTROOM DESIGN

Hollister/Kellogg Park Restroom Building



4-Unisex Private/Family ADA Stalls with Center Storage/Equipment Room

SPLASH PAD

- ❖ September 1, 2015 the City Council Confirmed the desire to keep the Splash Pad in the proposed park design
- ❖ The water use is estimated to be .035 acre feet per year, which calculates to 11,340.76 gallons annually
- ❖ The water usage for this proposed water feature is within the approved allocation from GWD under their current restrictions
- ❖ The current GWD restrictions prohibit outdoor water feature use, such as a fountain, splash pad, etc.

SPLASH PAD OPTIONS

- ❖ Install the infrastructure for the splash pad below the surface and mulch the area for the splash pad while the drought restrictions remain in place. Once the restrictions are lifted, the City can submit plans to GWD and apply for water service for the splash pad. (Only Underground Equipment)
- ❖ The City can install the splash pad, its features and support infrastructure during construction, but with the understanding that it must remain non-operational until the drought restrictions are lifted by GWD. (All infrastructure and features)
- ❖ Determine whether the splash pad should be installed at the time the park is constructed or at a future time when drought restrictions are lifted. (No construction of a splash pad at the time of development)
- ❖ Costs for this water feature in the proposed park design is estimated between \$250,000 and \$350,000.

OTHER PARK ADJUSTMENTS

- ❖ Increase in the number of restrooms from 2 to 4 unisex private units
- ❖ Increase to the size of the building to accommodate storage of play equipment for a future programs
- ❖ Adjustments to the San Jose Creek Bike Path to the west side of the Sister Witness Tree and installation of fencing
- ❖ Increase in the size of the playground area
- ❖ Revisions to the layout of some of the recreation amenities to accommodate separate play spaces for the playground and the splash pad



QUESTIONS?
