



# **Emergency Preparedness: Winter 2018/19 Storm Preparations**

**November 6, 2018  
Goleta City Council**

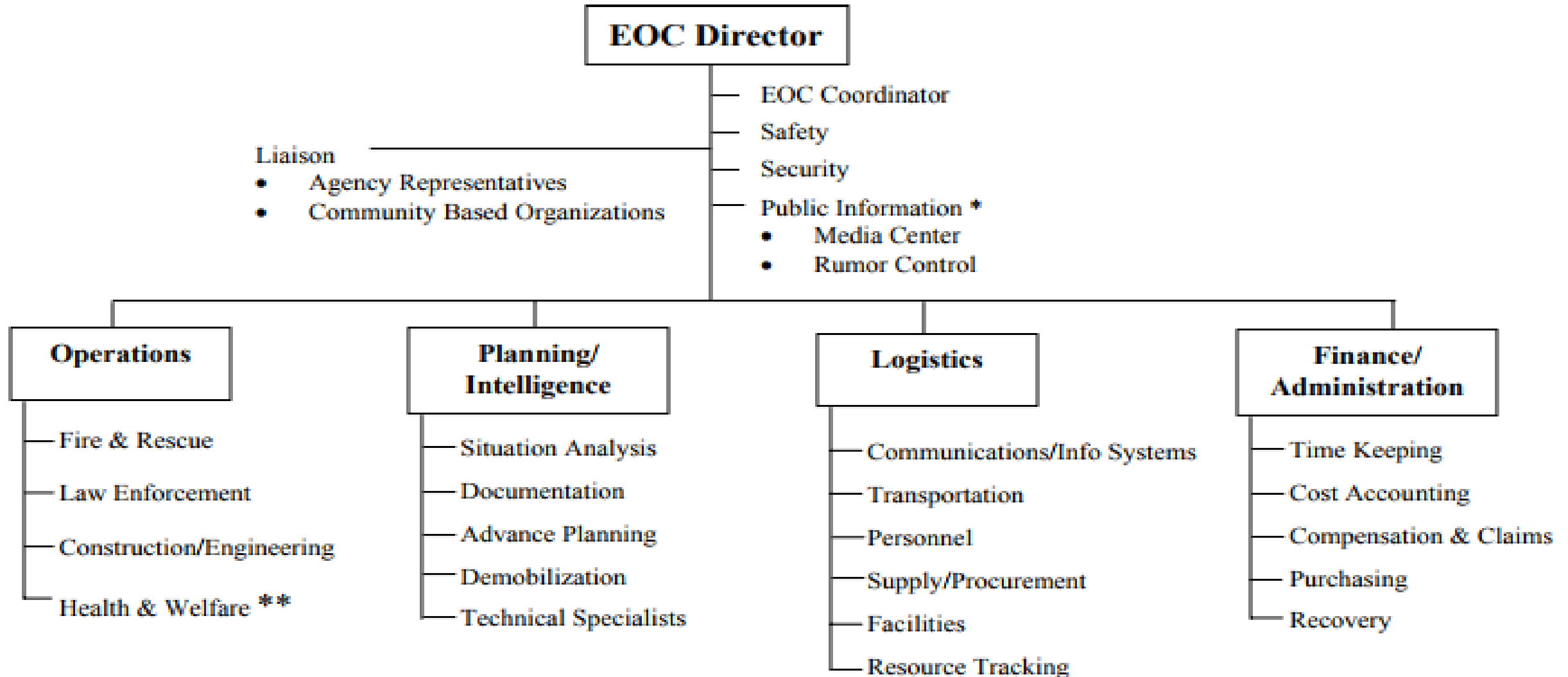
**Presented by:**

**Michael Baris, Emergency Services Coordinator  
Department of Neighborhood Services & Public Safety**

# Order of Events in a Disaster

- Incident occurs
- Response and recovery efforts
- EOC Activation
  - EOC Director activates Sections as necessary
  - Can be large or small, physical or virtual
- Disaster Proclamation Request from EOC Director
- City Council ratifies

# Current Staffing Model SEMS Structure



# Compliance with Federal and State Guidelines

- National Incident Management System (NIMS)
- Standardized Emergency Management System (SEMS)
- Compliance
  - Use SEMS when emergency declared (Command, operations, planning, logistics, finance)
  - Coordinate with Operational Area (County OEM)
  - Coordinate with incident command and mutual aid (Fire, Sheriff)

# Staff Roles

- City Manager \_\_\_\_\_
- NS&PS Director \_\_\_\_\_
- Community Relations \_\_\_\_\_  
Manager
- Emergency Services \_\_\_\_\_  
Coordinator
- Public Works Director \_\_\_\_\_
- Deputy City Manager \_\_\_\_\_
- Planning Director \_\_\_\_\_
- Finance Director \_\_\_\_\_
- EOC Director
- Deputy EOC Director
- PIO
- EOC Coordinator
- Operations Section Chief
- Logistics Section Chief
- Planning Section Chief
- Finance Section Chief

# City Council's Role

- Proclaim and/or ratify a local emergency
- Sit outside the EOC operations / SEMS structure for continuity of government
  - Policy/Legislative roles, support to the operations efforts
  - Communicate and share information with the EOC Director
  - Represent city at local, state and federal level, interact with other agency representatives and members of the public



# Recovery from Disaster

- **Begins immediately alongside response**
  - Restoring services, achieving normalcy, documentation
- **Seek Federal and State reimbursements**
  - City qualifies by following SEMS and NIMS
  - California Disaster Assistance Act (CDAA) compliant
    - Local Hazard Mitigation Plan
  - Proper documentation of staff and resources used

# Staff Preparation for Emergency Roles

- Disaster Service Worker Training and FEMA Required Study Courses 100, 200, 700
  - For all employees
- EOC activation training
- EOC Section training scheduled for 2019
- November Listos Program offered to city employees



# Community Preparation

- **Goleta CERT Program – 363 graduates to date**
  - Graduates in 2018: **63**
  - Advanced classes held this year: **4**
  - **5** CERT classes offered in 2018, **5** to be offered in 2019
  - Restart quarterly newsletter
  - Goleta CERTs provided over **1,063** volunteer hours in support to the Thomas Fire/Montecito Debris Flow incidents

# Continuing Preparation for 2019

- Update Emergency Operations Plan (EOP)
- Develop EOC Activation Plan
- Develop Standard Operating Guidelines (SOGs) for staff
- Conduct 4 exercises for staff, establish annual exercise and training calendar
- Continue to increase CERT Training Opportunities
- Explore emergency back up power for GVCC and Library



# City Storm Readiness Efforts

- Assessments of city bridges, culverts, drain inlets and cleanouts that could be affected by storm events
- Debris removal; pre-staging resources
- Desilting
- Inventory of emergency response resources
- Drainage improvement projects
- Emergency contracts
- Ready-to-use flood detour maps
- Tree inspections
- Established sandbag distribution centers
- Coordinating public information efforts with allied agencies; providing timely and accurate information to residents

# Storm Readiness

- **Burn areas of Whittier and Thomas Fires are still hazardous**
  - Being cut off from resources north or south, 101 freeway closures
  - City Hall on back up generator power 24/7
- **On-going coordination of Debris Removal Plan with County OEM**
- **National Weather Service (NWS) warnings**
  - High intensity, short duration storms

# NWS and USGS Post-Wildfire Rain Rates

Second Year	Thomas (in)	Whittier (in)
15 min	0.4	0.5
30 min	0.6	0.6
1 hr	0.8	1.0
3 hr	1.4	2.0
6 hr	2.2	2.3
12 hr	2.9	3.1

- Rainfall-rate thresholds used by NWS for Santa Barbara County. Red cells indicates high-intensity rainfall found most likely to produce debris flow.

# Community Public Information

- Goleta City Alert
- Aware and Prepare System for notifications
- ReadySBC as a hub for up-to-date information
  - Maps
  - Creating a family plan
  - Ready! Set! Go! – County OEM Initiative



# Consistent Community Public Information



## Storm Readiness

Some storms will be predictable and authorities will be able to provide ample time for the community members to get their home and family **READY**.

They will have time to get **SET** by preparing their method of transportation and gathering their belongings.

They will have time to **GO** with plenty of time to get to a safe place.

However, sometimes a storm can quickly develop and cause a flash flood and debris flow with little or no warning.

Officials may only be able to alert the public with just a few minutes notice, or none at all.

It is imperative that you understand the seriousness of the situation and are always prepared.

For more information, go to **ReadySBC.org**.

**READY**SBC.org  
SIGN-UP • PLAN • UNDERSTAND



If at any time you feel unsafe, take immediate action and do not wait for a notification to evacuate.

### READY

**Alert!  
Be Aware!**



### Weather ADVISORY 72 to 48 hours before storm

- County Office of Emergency Management is alerting the community to an upcoming storm of duration and intensity to pose a possible risk to life or property.
- Community members should closely monitor the situation.
- Have a family plan; Where you will go? What will you need?
- Prepare your home.

### SET

**Prepare  
To Leave!**



### Evacuation WARNING 48 to 24 hours before storm

- Santa Barbara County Sheriff's Office is warning all that there is a high possibility of an evacuation due to an incoming storm with duration or intensity to pose a risk to life or property.
- Arrange transportation, confirm your evacuation plan, gather items from your home and be ready to leave.
- People with access and functional needs or with large animals should take action as needed.

### GO!

**Leave  
Now!**



### Evacuation ORDER 24 hours or less before storm

- Santa Barbara County Sheriff's Office orders you to leave now if you are in a designated evacuation area.
- The incoming storm poses an extreme risk for loss of life and property in designated areas. Persons who refuse to comply with an evacuation order will not be forcibly removed from their home. However, they should not expect rescue or other lifesaving assistance after the onset of the emergency event.
- If flooding/debris flow happens, you may be stranded for several days.
- Authorities will return people home as soon as it is safe to do so.

# Questions

Thank you for your time.