

GENERAL PLAN CONFORMANCE FINDINGS FOR THE CAPITAL IMPROVEMENT PROGRAM FY 2018-2019

Planning Commission
December 10, 2018

Presentation by:

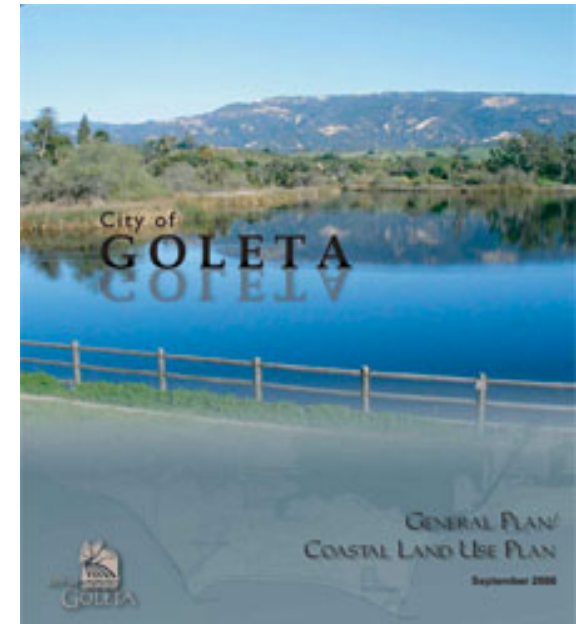
Anne Wells, Advance Planning Manager

James Winslow, Senior Project Engineer, CIP Division



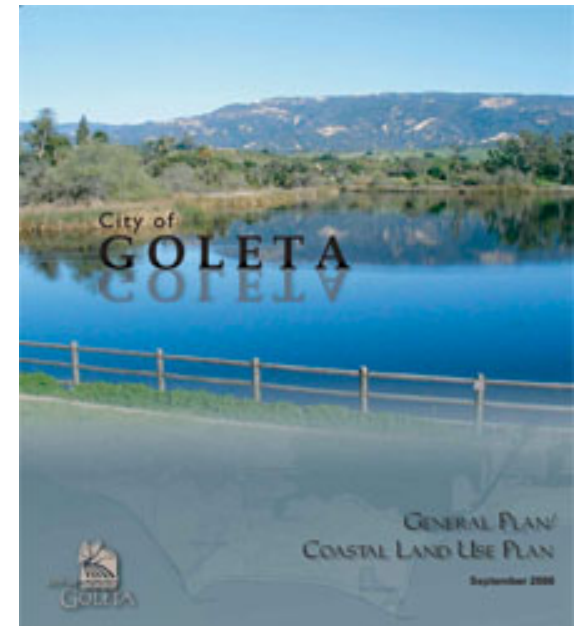
General Plan & Capital Improvements FY 2018- 19

- The Commission is required (under Government Code Section 65401) to review the CIP for conformity with the General Plan.
- PC Adopted Resolution 18-05
 - May 21, 2018



Purpose

- Rescind Resolution 18-05 and Adopt Resolution 18-____ for FY 2018/19.

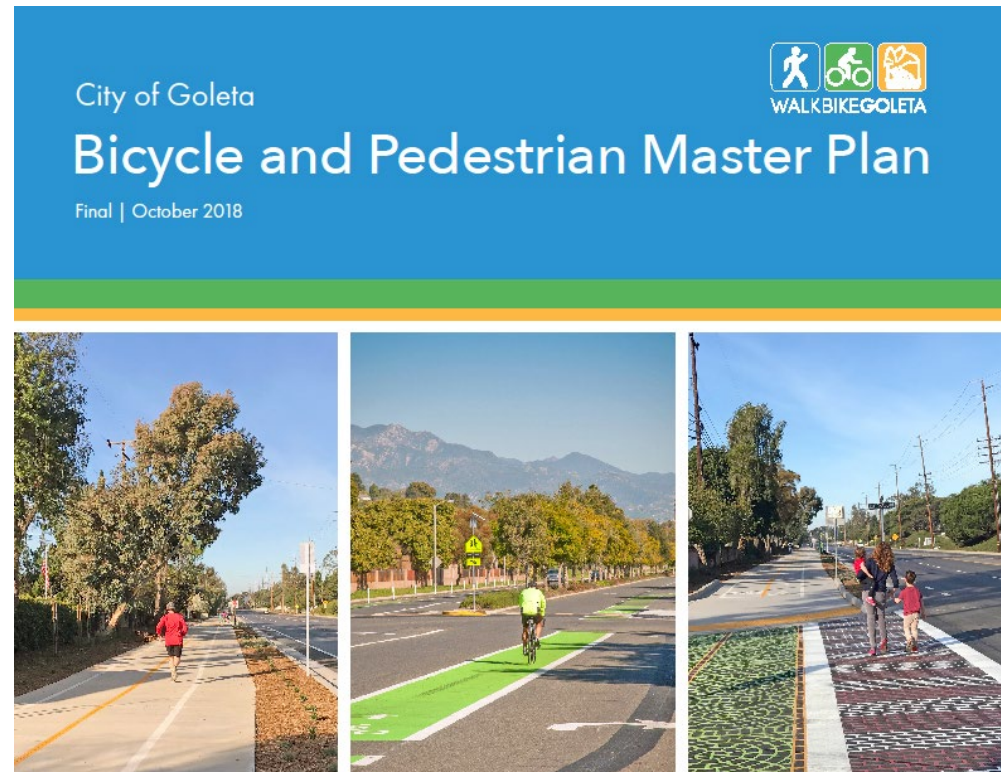


Annual CIP Items



Revisions to the Capital Improvement Program (CIP)

- Council Adopted the Goleta Bicycle and Pedestrian Master Plan (BPMP) – October 16, 2018.
- New Development Impact Fee (DIF) Ordinance
- Comprehensive CIP list
 - BPMP
 - DIF
 - Stormwater Projects



CIP PROJECTS



CIP -65401.kmz

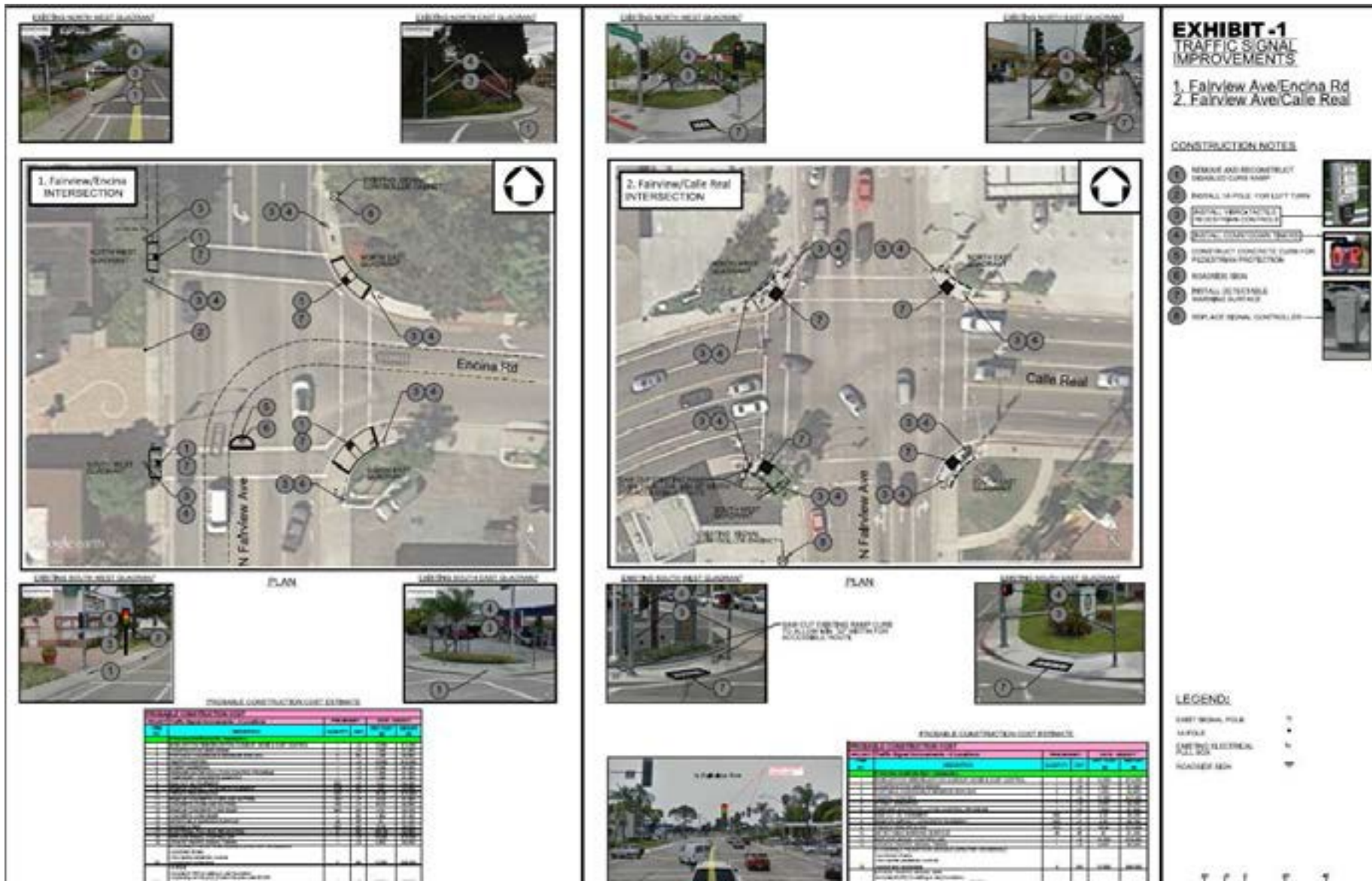
Planning Commission Recommendation

Adopt Resolution No. 18-____, entitled “A Resolution of the Planning Commission of the City of Goleta, California, Rescinding Resolution 18-05 and Finding the Fiscal Year 2018-2019 Capital Improvement Program is in Conformance with the Goleta General Plan / Coastal Land Use Plan Pursuant to Section 65401 of the Government Code.”

QUESTIONS ?

PROJECTS IN ENGINEERING, DESIGN, OR PLANNING PHASE

Citywide Evaluation of Existing Traffic Signals



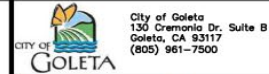
Hollister Redesign Project (Complete Streets)

Figure 7-3; Table 7-4; TE 5.4: Hollister Ave Redesign Improvements



San Jose Creek Bike Path – Middle/South

Figure 7-6: Bikeways Plan Map Planned Bikeway



**San Jose Creek Bike Path
Middle Extent**

New 101 Overcrossing (Ellwood Station Rd.)

Figure 7-3; Table 7-4; TE 5.5: New US-101 Freeway Crossings



Old Town Sidewalk Infill Project

Figure 7-5: Pedestrian System Plan;
TE 10.5: Pedestrian Safety



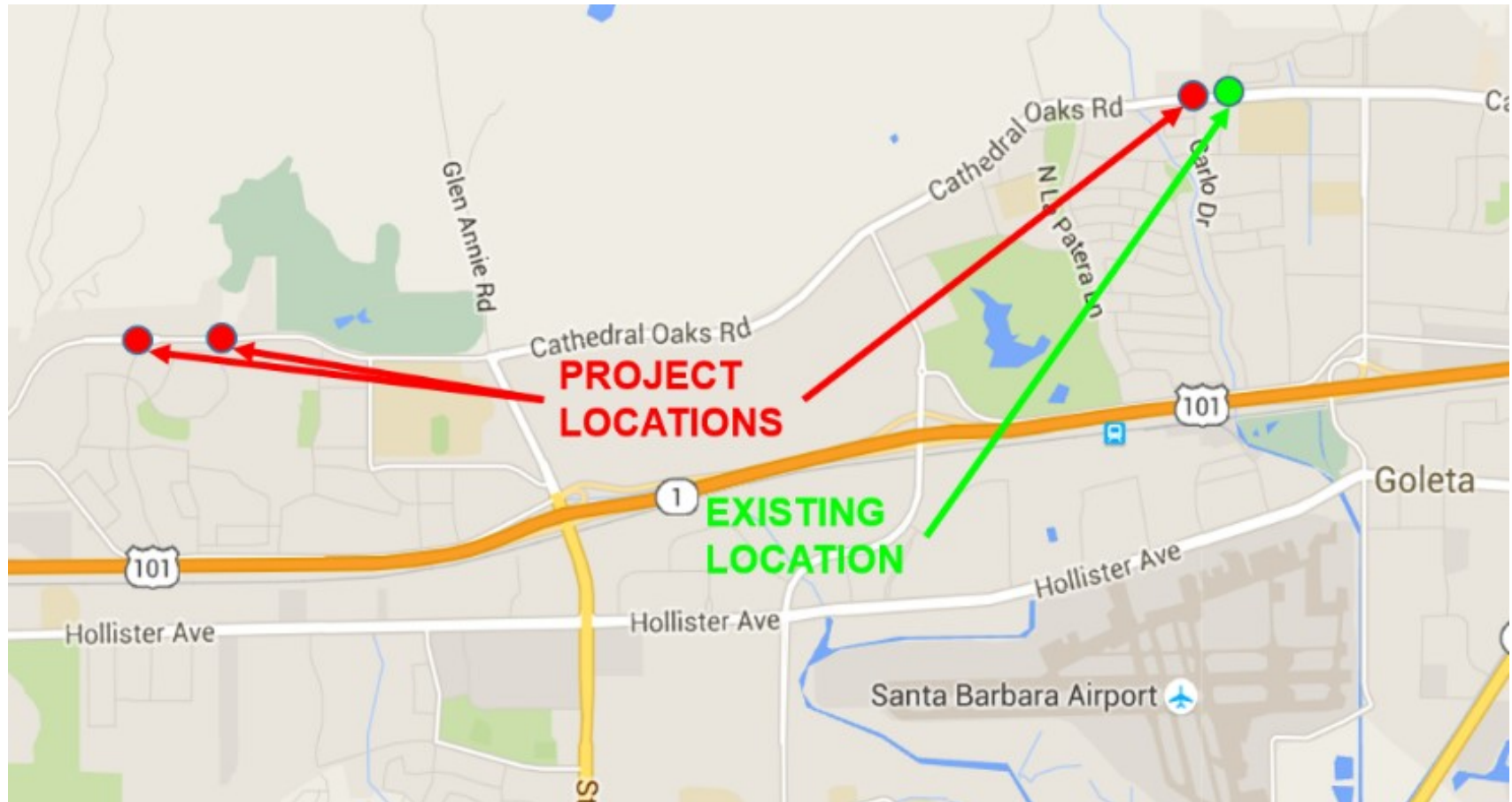
Rancho La Patera Improvements

PF 2: Other Facilities of the City of Goleta
PF 8: General Standards for Public Facilities



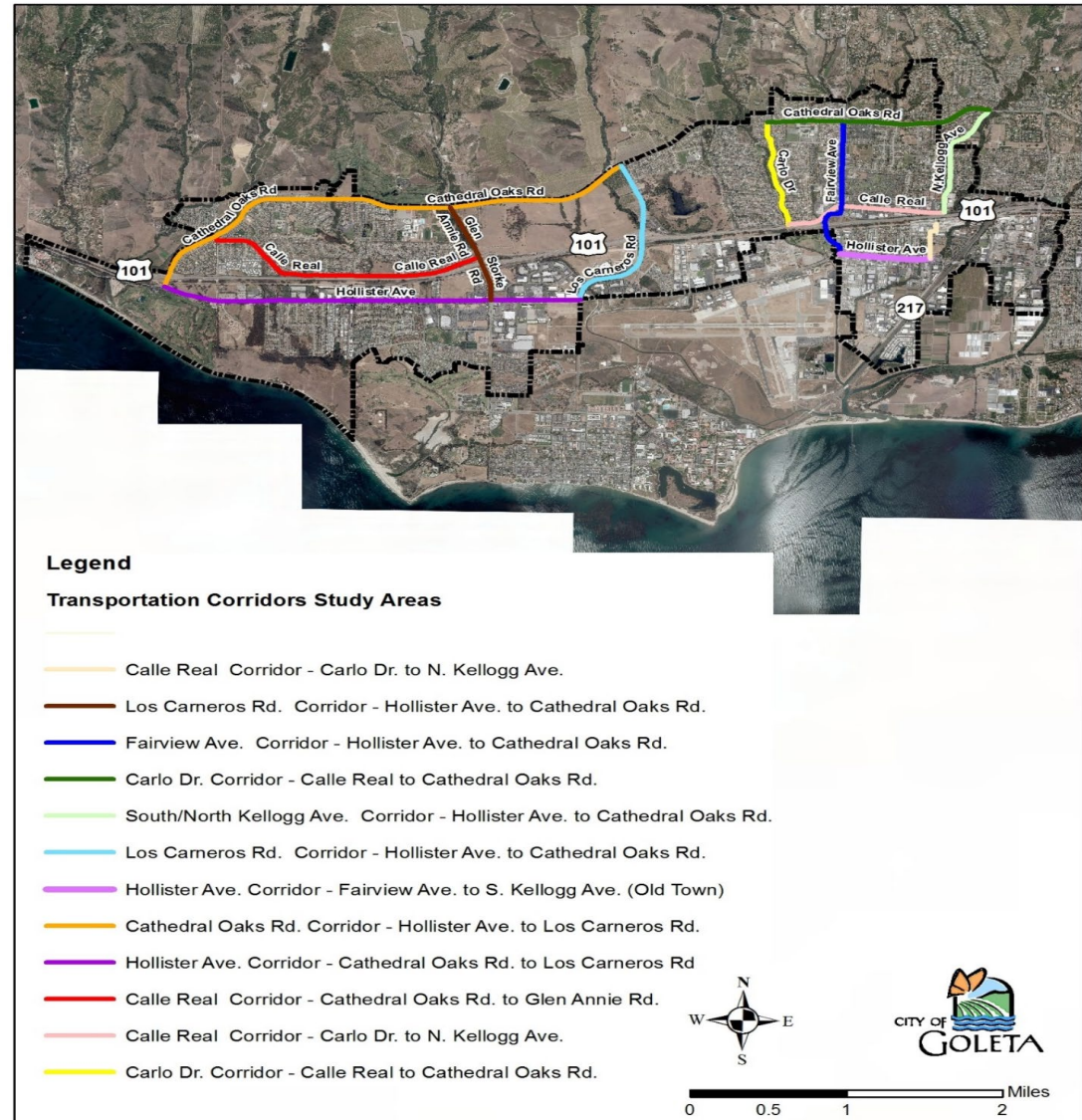
Rectangular Rapid Flashing Beacons (RRFB) Improvements at School Crosswalks

TE 10: Pedestrian Circulation; TE 10.5: Pedestrian Safety; TE 12.2: Efficient Utilization of Transportation Facilities; PF 5: School Facilities



Goleta Traffic Safety Study

TE 1.1 Integrated Multi-Modal Transportation System
 TE 1.3 Improved Connectivity in Street, Pedestrian, and Bikeway Systems
 TE 1.4 Multi-Use Street System
 TE 3.3 Major Arterials
 TE 10.5: Pedestrian Safety
 TE 11.5 Bicyclist Safety
 TE 12.1 General



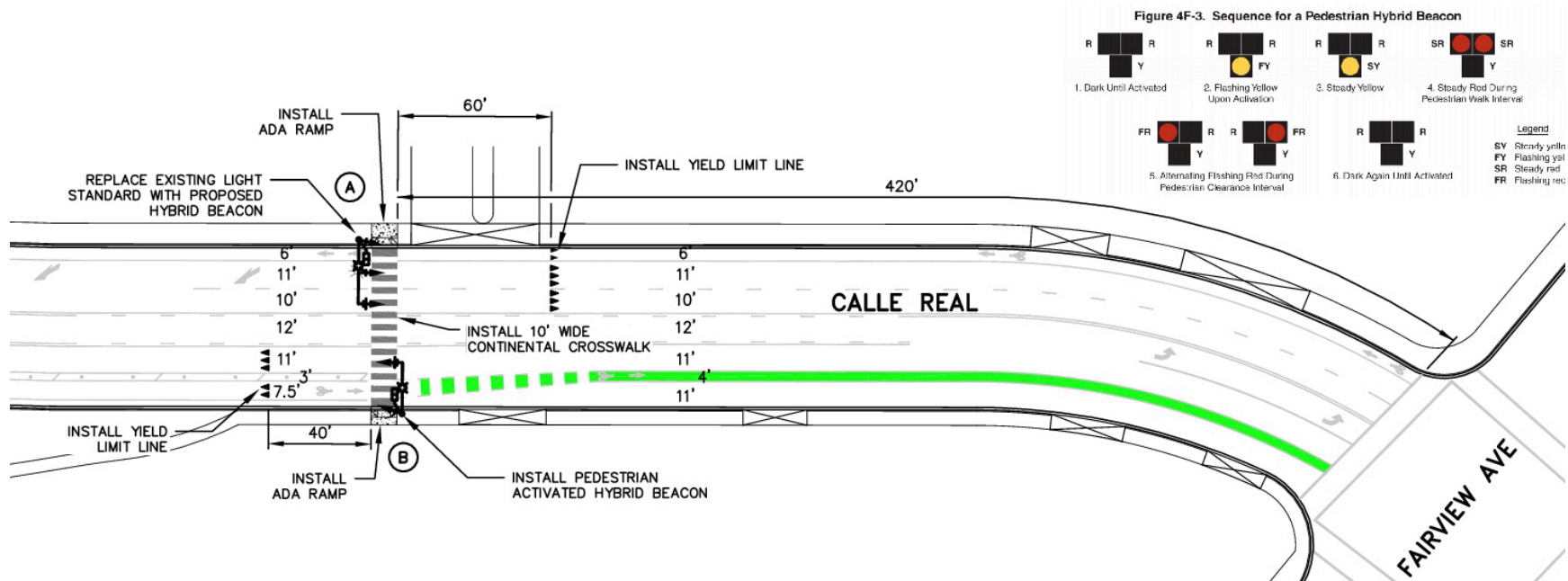
Fairview Avenue Corridor Study

TE 10: Pedestrian Circulation
TE 10.5: Pedestrian Safety
TE 11: Bikeways Plan
TE 11.5: Bicyclist Safety
TE 14: Financing Transportation Improvements
TE 15: Regional Transportation
Figure 7-5: Pedestrian System Plan
Figure 7-6: Bikeways Plan Map



Crosswalk Calle Real/Fairview

TE 10: Pedestrian Circulation



PROPOSED POLE & EQUIPMENT SCHEDULE														
LOC	STANDARDS				LED LUMINAIRE	VEH. SIG. MTG.		PED. SIG. MOUNTING	PPB		POLE LOC.		REFLECTIVE S.N.S (DOUBLE FACED)	REMARKS
	TYPE	HEIGHT	SIG. M.A.	LUM. M.A.		M.A.	POLE		#	QUAD	STA.	OFFSET		
A	17-3-100	30'	25'	12'	154 W	2-MAS*	SV-1-T*	SP-1-T**	-	E	-	-	-	F= 12'
B	19-4-100	30'	20'	12'	154 W	1-MAS*	SV-1-T*	SP-1-T**	-	W	-	-	-	-

* 3-SECTION PEDESTRIAN HYBRID BEACON

** COUNT DOWN TYPE PEDESTRIAN SIGNAL

Hollister Ave and Fairview Ave Roundabout

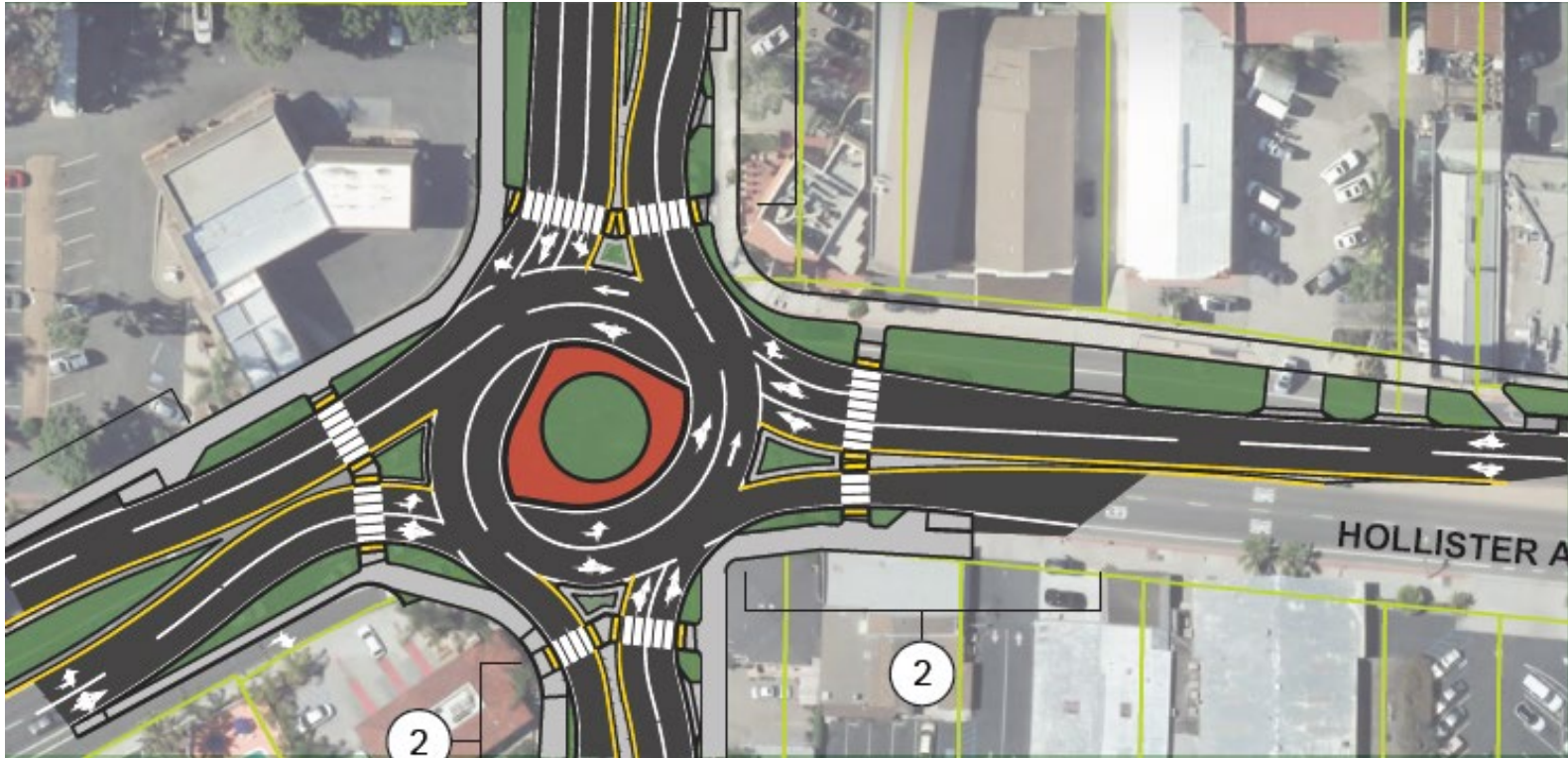


Figure 7-3: Map identification #30

Table 7-4: Identification #6 and #10

Figure 7-5: Pedestrian System Plan

Figure 7-6: Bikeways Plan Map

TE 5.4: Hollister Ave Redesign Improvements

TE 5.9: Street Frontage Improvements

TE 5.10: Major Intersection Improvements

TE 10: Pedestrian Circulation

TE 10.5: Pedestrian Safety

TE 11: Bikeways Plan

TE 11.5: Bicyclist Safety

TE 14: Financing Transportation
Improvements

TE 15: Regional Transportation

AMTRAK Depot

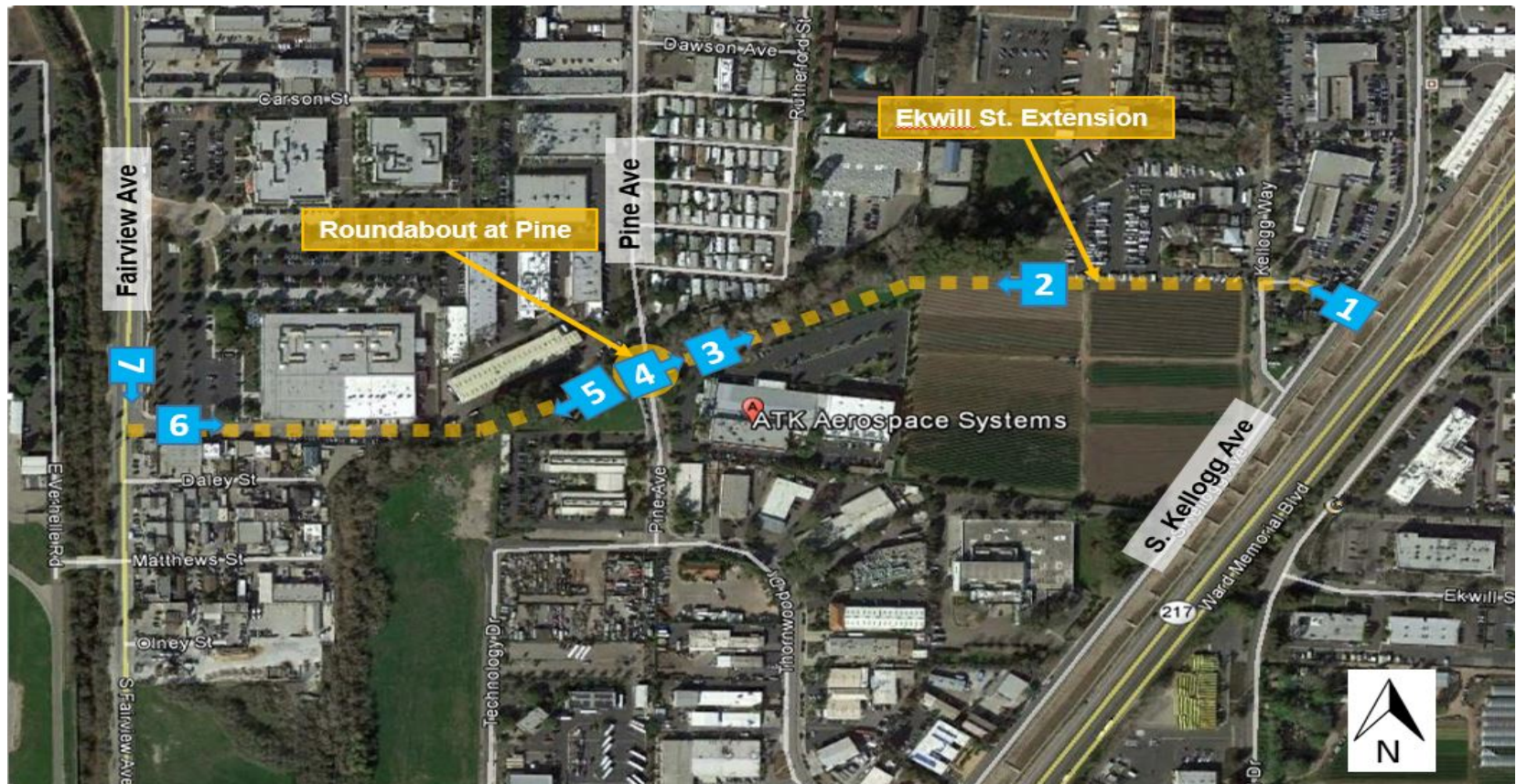
TE 7.3 Intermodal Transportation Center/Bus Transfer Areas

Figure 7-4: Public Transportation System



Ekwill Street Extension

Fig 7-3; Table 7-4; TE 5.3: Ekwill-Kellogg; TE 5.4: Hollister Ave Redesign Improvements; TE 5.10: Major Intersection Improvements



Bicycle and Pedestrian Master Plan

TE 6.2: Component Features Included in Street Standards

TE 10: Pedestrian Circulation

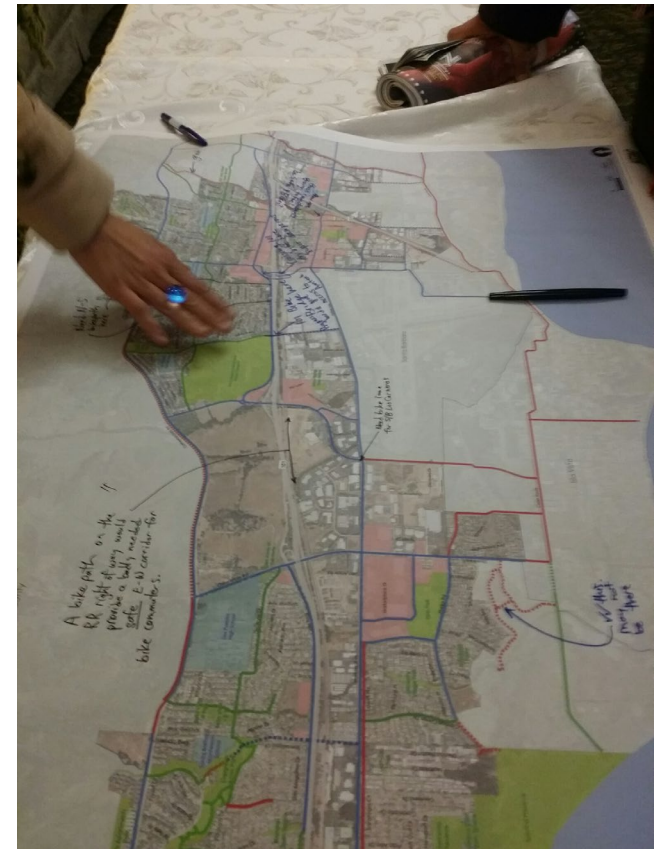
TE 11: Bikeways Plan

TE 14: Financing Transportation Improvements

TE 15: Regional Transportation

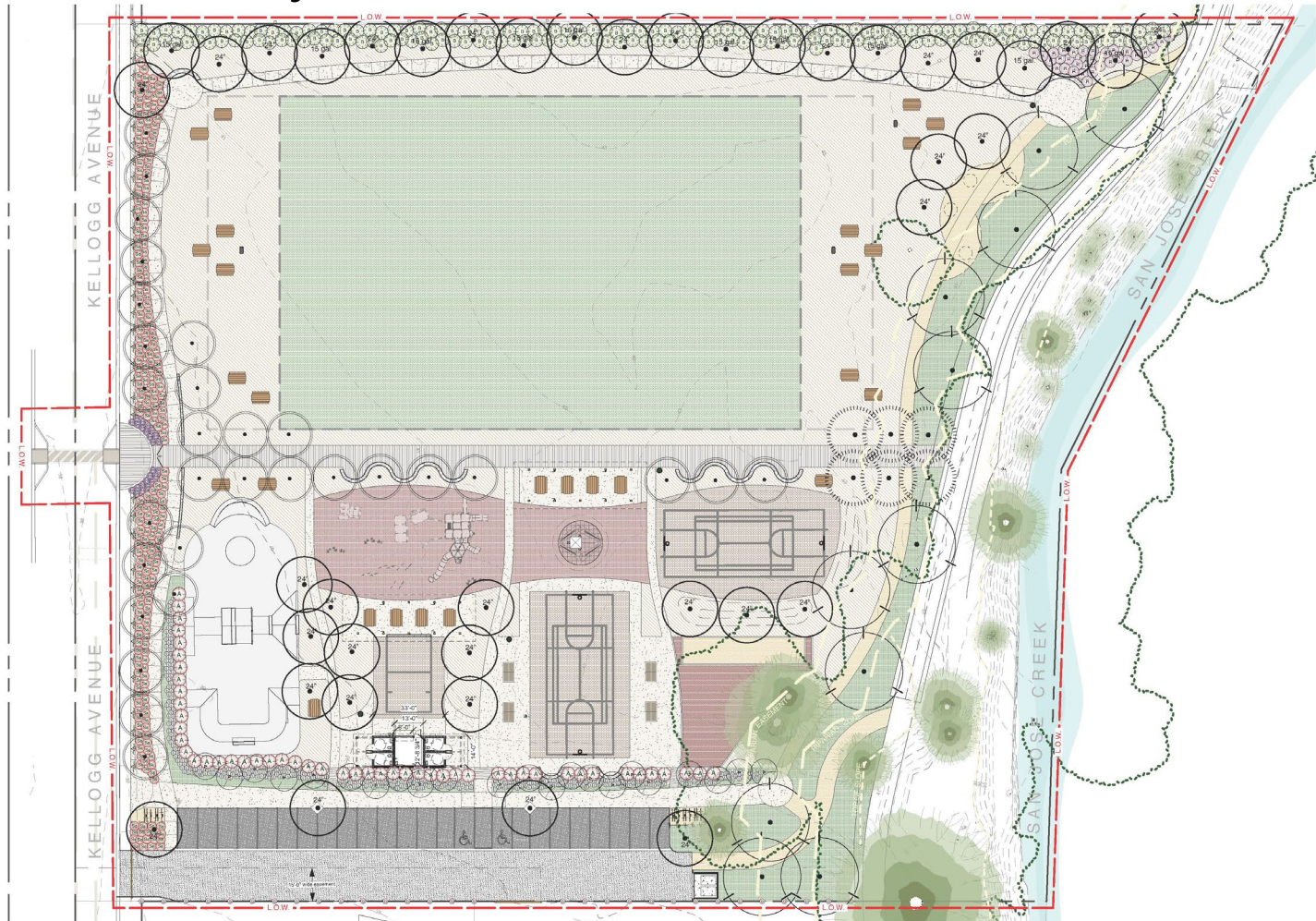
Figure 7-5: Pedestrian System Plan

Figure 7-6: Bikeways Plan Map

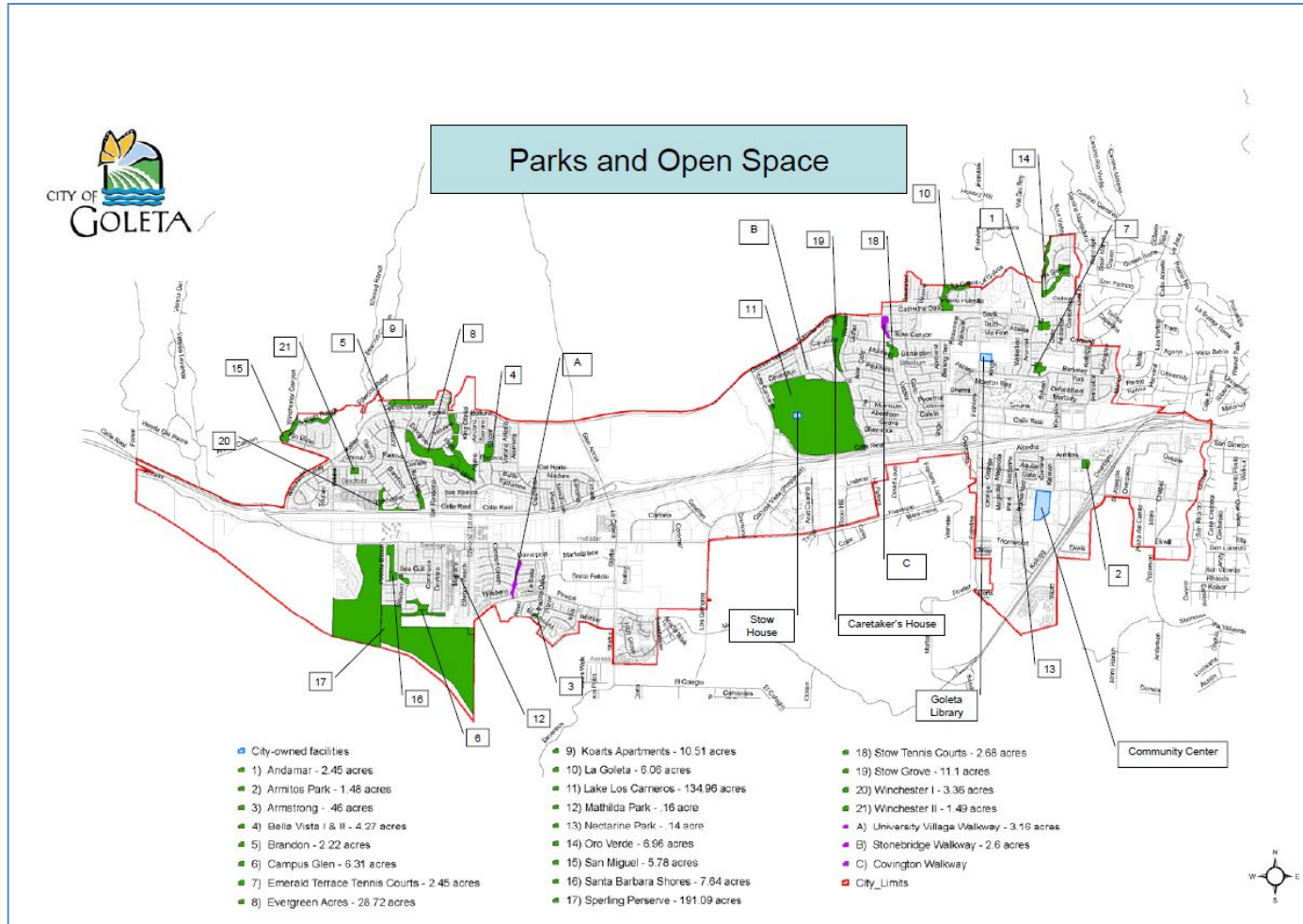


Old Town Park (Hollister/Kellogg Park)

OS 6: Public Park System Plan



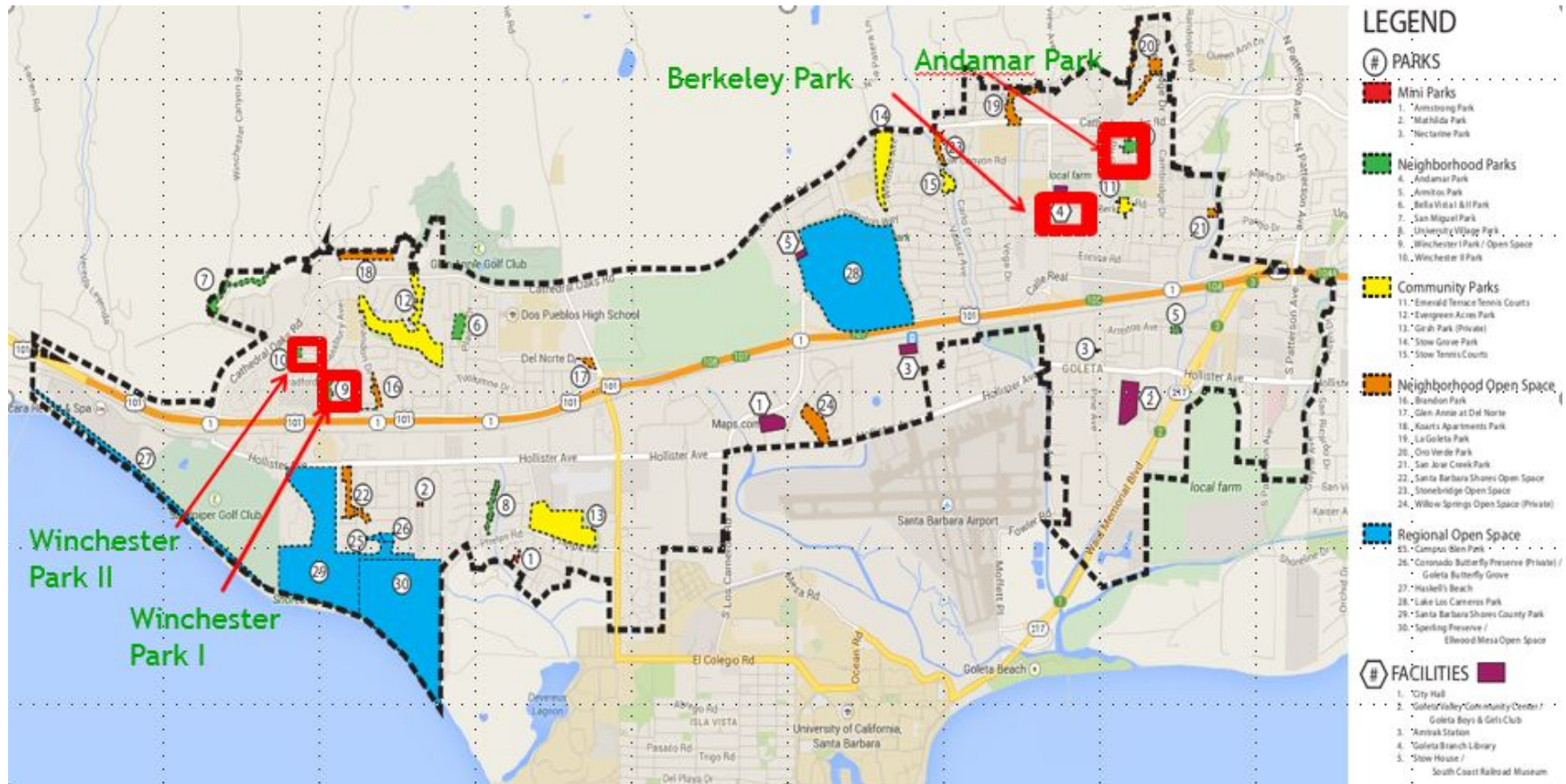
Parks Master Plan



OS 6: Public Park System Plan

OS 7.5: Open Space for Outdoor Recreation

Misc. Park Improvements

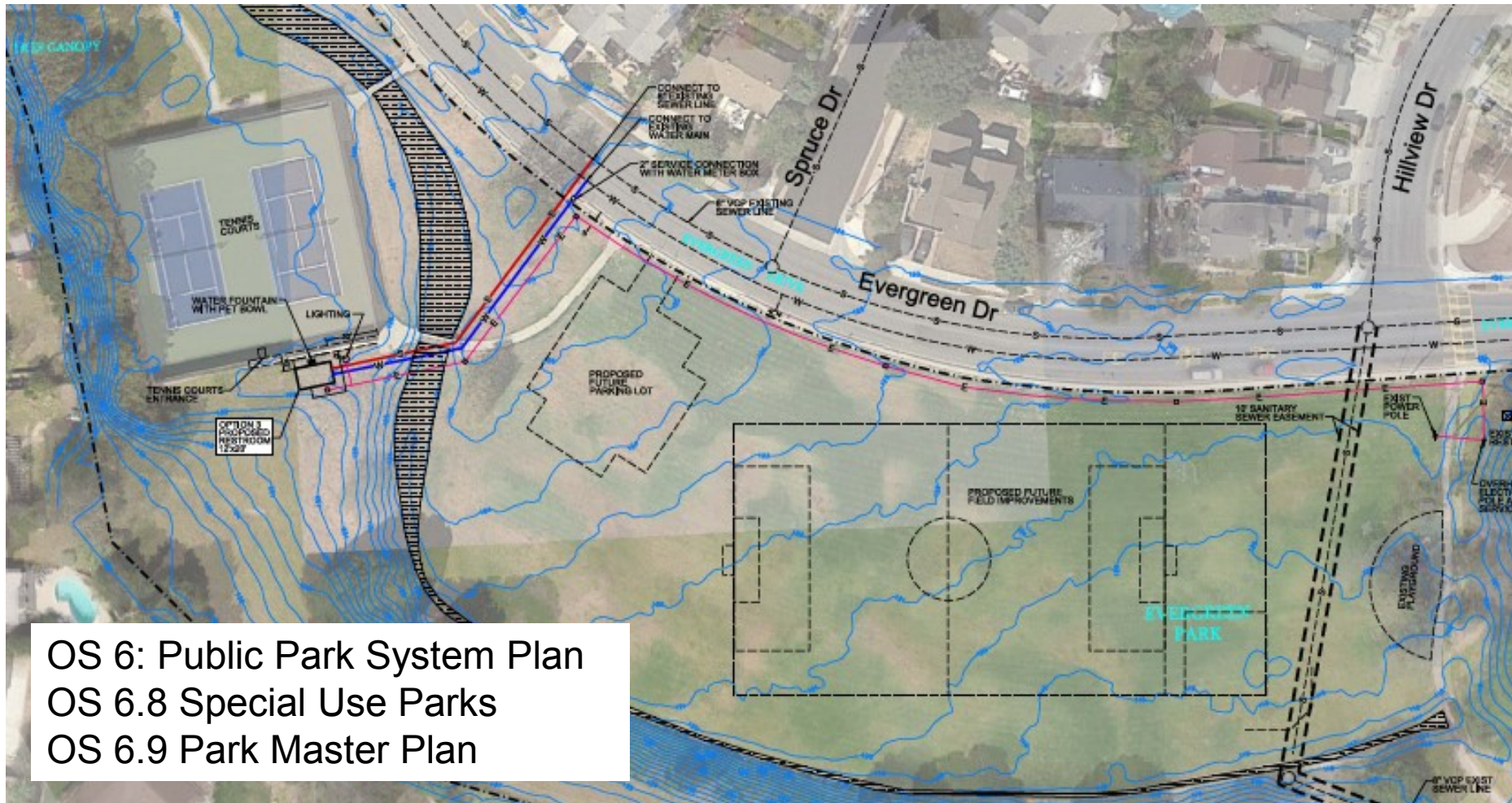


OS 6: Public Park System Plan

SE 1: Safety in General

PF 8: General Standards for Public Facilities

Evergreen Multi-Purpose Field



OS 6: Public Park System Plan

OS 6.8 Special Use Parks

OS 6.9 Park Master Plan

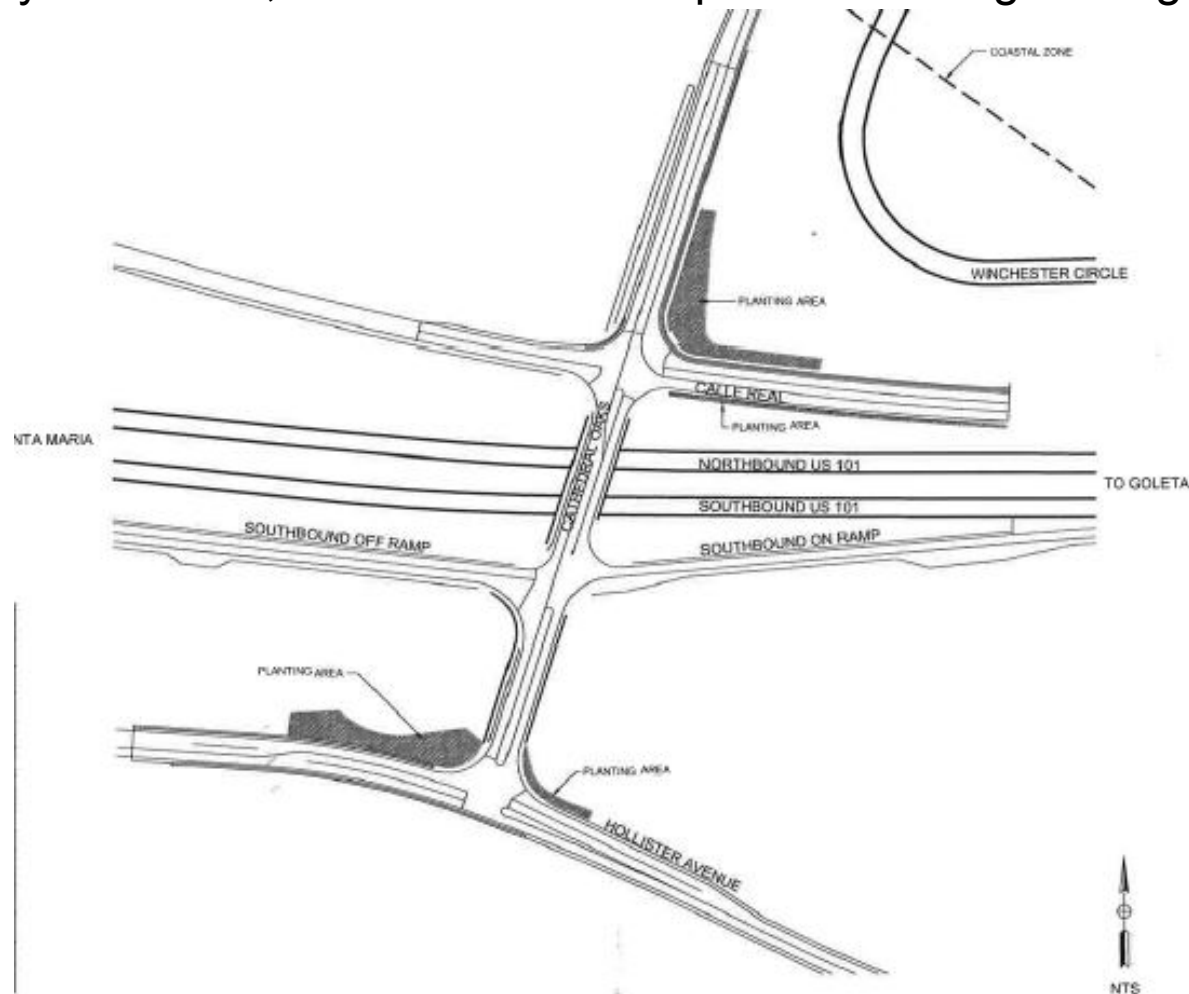
Community Garden



OS 6: Public Park
System Plan

Cathedral Oaks Landscaping Enhancements

VH 2.1: Designated Scenic Corridor; VH 2.6: Gateways to the City; VH 3: Community Character; VH 4.10: Streetscape and Frontage Design



Ward Memorial Class II Bike Lanes



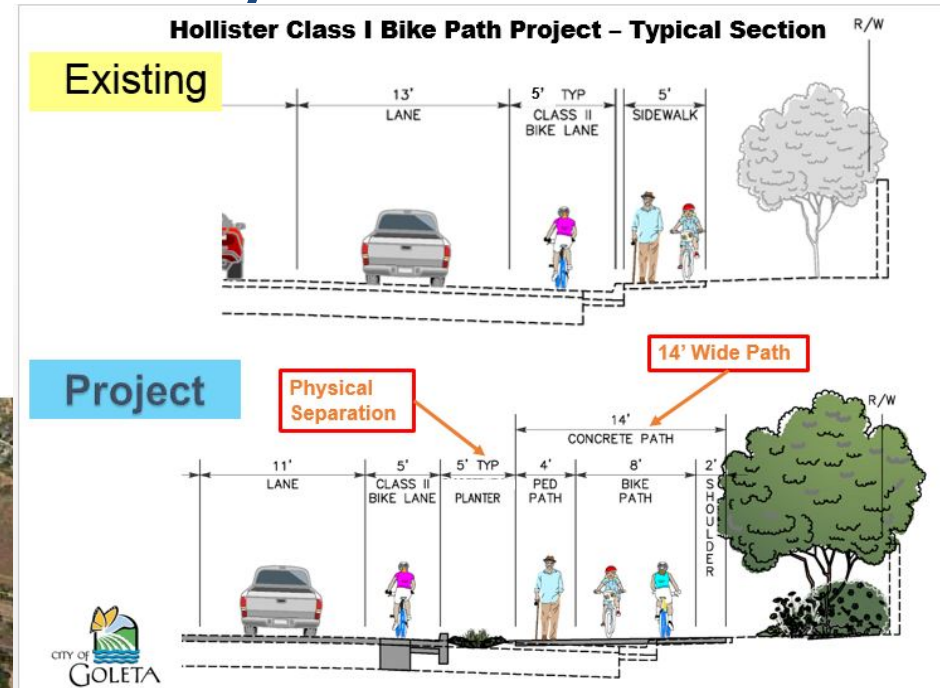
Magnolia Sidewalk Infill – South



Hollister Class I Bikeway

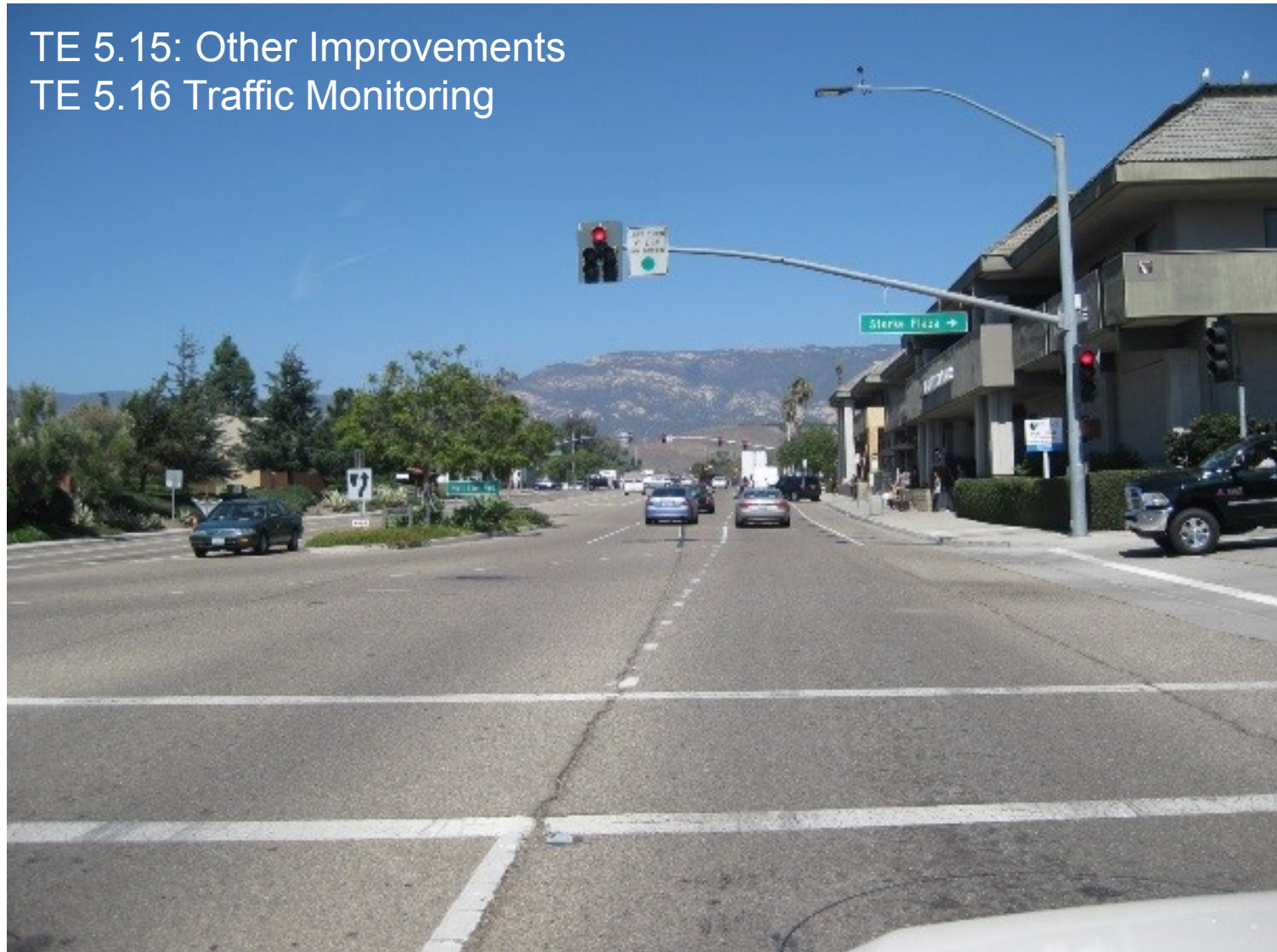
TE 11.5: Bicyclist Safety

Figure 7-6: Bikeways Plan Map
Planned Bikeway



Storke Road Medians

TE 5.15: Other Improvements
TE 5.16 Traffic Monitoring



Reclaimed Water Service to Bella Vista Park

CE 10: Watershed Management and Water Quality
CE 15: Water Conservation and Materials Recycling

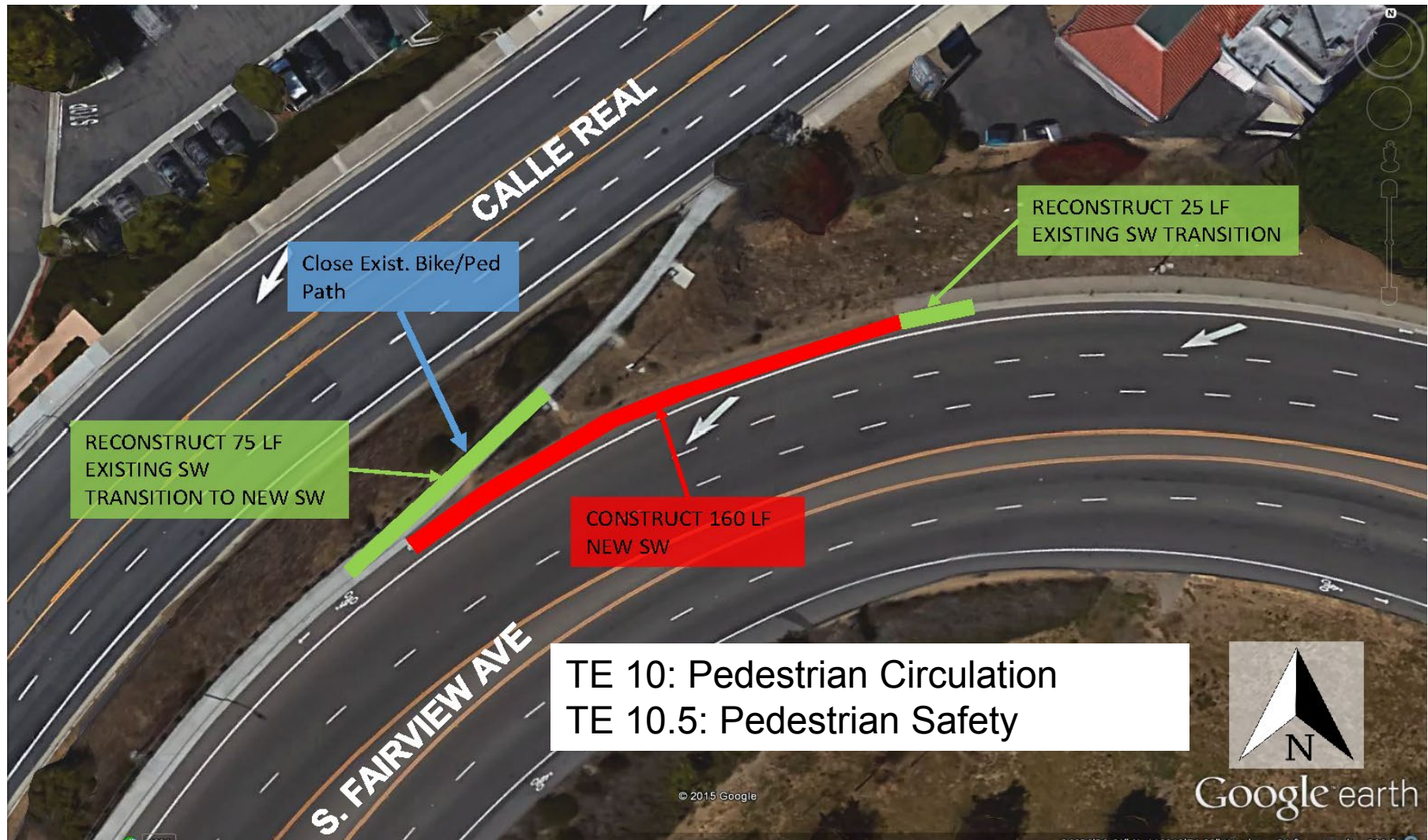


Goleta Community Center Repairs

PF 8: General Standards for Public Facilities



Fairview Ave Sidewalk Improvements at US Calle Real and US 101



La Patera Road Overcrossing/Undercrossing

TE 5.5 New US-101
Freeway Crossings;
TE 5.15 Other
Improvements;
TE 10: Pedestrian
Circulation;
TE 10.5: Pedestrian
Safety;
TE 11.5: Bicyclist Safety;
Figure 7-3: Map
identification #5;
Table 7-4: Identification #5



Calle Real Sidewalk Infill - La Patera to Los Carneros

TE 10: Pedestrian Circulation; TE 10.5: Pedestrian Safety



Lake Los Carneros Aeration Project

OS 7.5: Open Space for Outdoor Recreation



Misc. Facilities Improvements



PF 2: Other Facilities of the City of Goleta
PF 8: General Standards for Public Facilities

LED Street Lighting

SE 1: Safety in General



Ellwood Trails and Restoration Design

OS 5.5: Use and Mgmt. of the Open Space Area; O.S. 5.3: Public Access and Recreation



ONGOING

Well Abandonment and Restoration

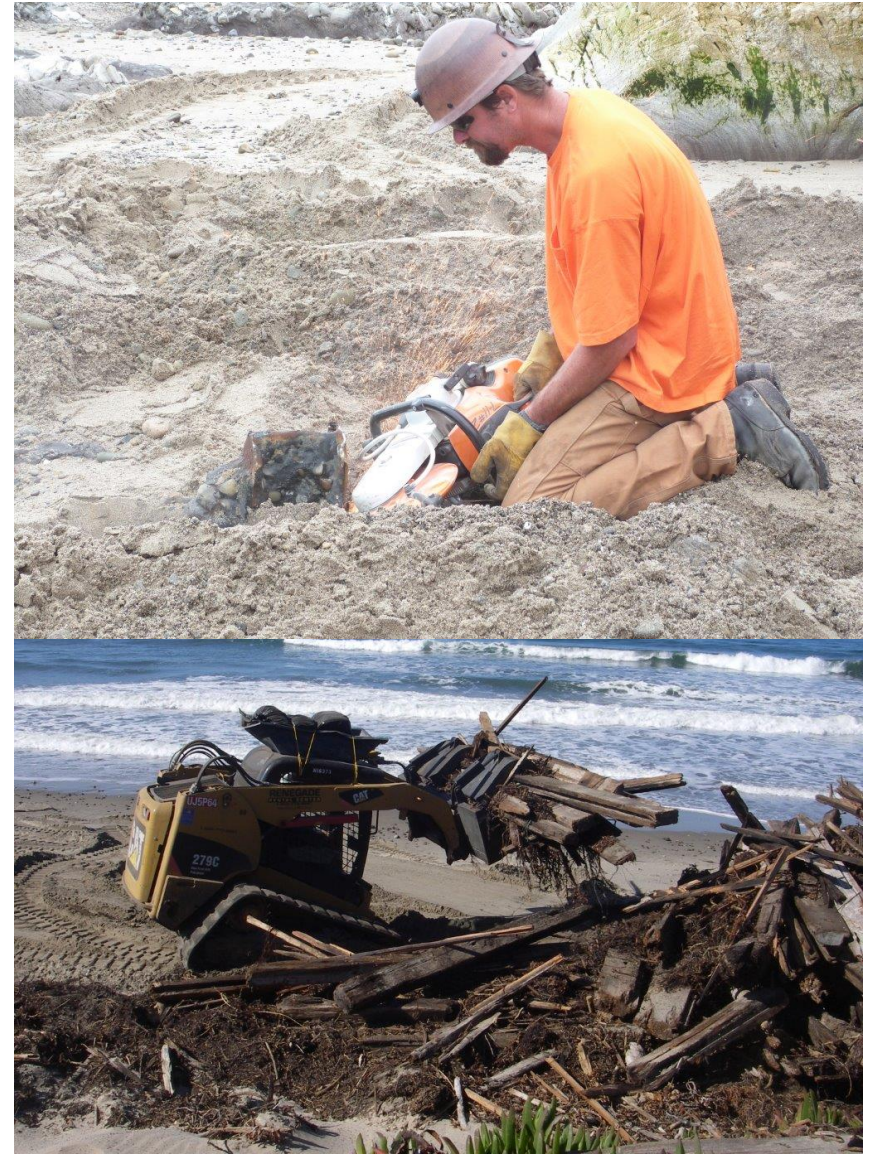
OS 5.5: Use & Mgmt. of the Open Space Area

OS 5.3: Public Access & Recreation



Beach Hazards Removal

SE 8: Oil and Gas Industry Hazards



PF 3.2: New Fire Station in Western Goleta

