



# City of Goleta Citywide Historic Context Statement February 19, 2019

**HISTORIC RESOURCES GROUP**

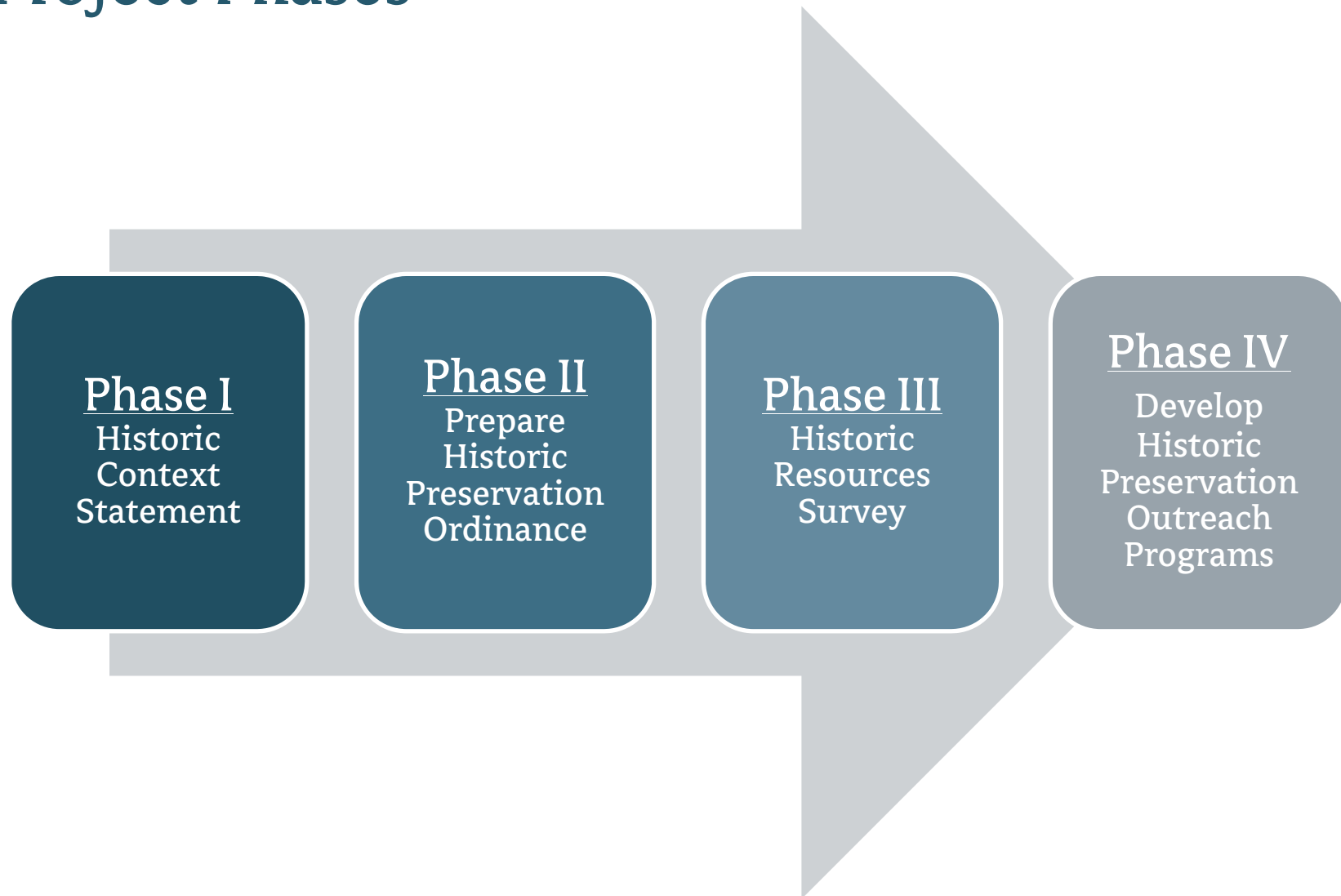
**City of Goleta**  
**Planning and Environmental Review Department**

**Historic Resources Group**  
Christine Lazzaretto  
Molly Iker-Johnson

**Greenwood and Associates**  
John M. Foster, RPA

**Carlberg Associates**  
Cy Carlberg  
Christy Cuba

# Project Phases



## Goleta's Historic Context Statement...

- Provides a framework for evaluating properties for potential historic significance based on built, Native American/archaeological, and tree resources
- Places built resources in the appropriate historic, social, and architectural context
- Highlights trends and patterns critical to the understanding of the built environment
- Is not intended to be a comprehensive history or a definitive listing of all significant resources in the City



## Project Progress

### Public Workshops

- December 7, 2016
- October 18, 2017
- November 15, 2017

### PTAC

- November 29, 2017

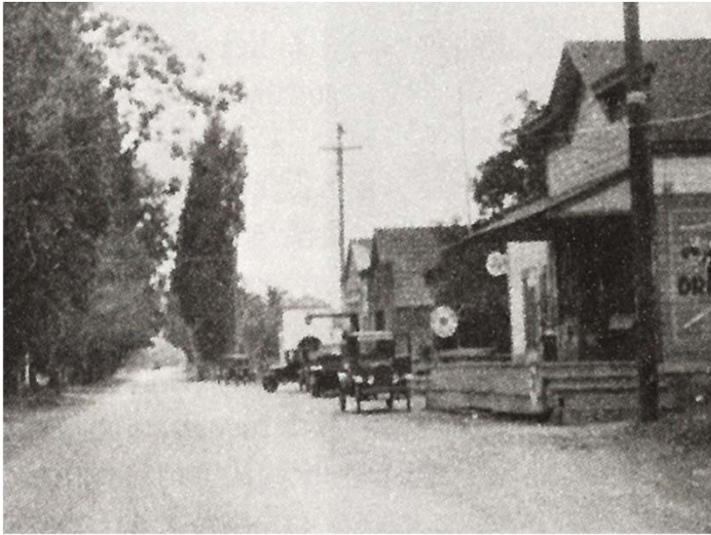
### Planning Commission

- March 12, 2018
- January 28, 2019



## Built Environment

- c. 1785-1969
- Historical trends and development patterns
- All property types
- Incorporated comments from Planning Commission and public

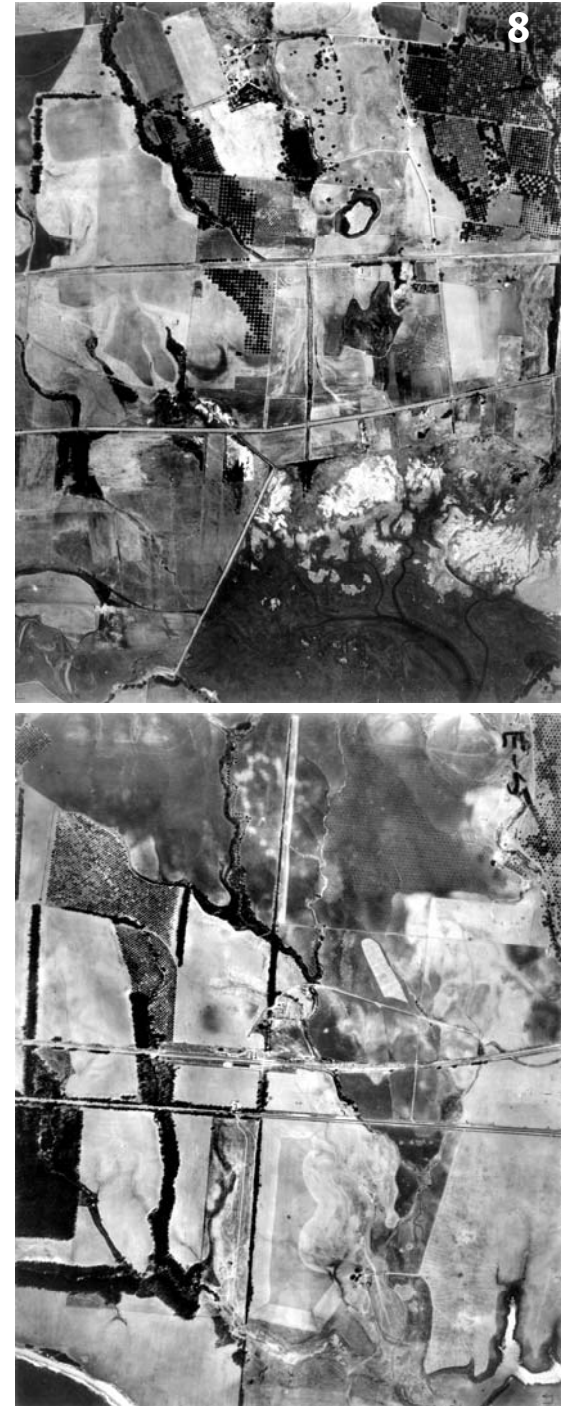


## Archaeology Study

- Presents an archaeological overview from prehistory to the middle of the American Period
- Documents the importance of the archaeological resources of the City
- Provides a basic status of the physical integrity and research potential of the archaeological resources in the City
- Establishes a foundation for development of recommendations for the protection and preservation of archaeological resources within the city

# Archaeology Study

- Incorporated comments from Planning Commission, public
- Worked with Barbareño Band of Chumash Indians to develop historic context
- Worked with David Stone, RPA to expand archaeological discussion





## Barbareño Band of Chumash Indians

- Motivation for the Historic Context Statement – a statement by the Barbareño band of Chumash Indians
- Content in the current draft of the Historic Context Statement – Barbareño Band of Chumash Indians



## Tree Study

- Documents the presence of heritage-quality tree species throughout the City
- Supports the City's urban forest management efforts for public street trees
- Promotes awareness of the rich diversity of specimen trees both on public and private properties
- Incorporated comments from Planning Commission, PTAC, and public



## Next Steps

### Historic Preservation Ordinance

- Spring 2019: Planning Commission Workshops

Information about the Historic Preservation project can be found at  
<http://www.cityofgoleta.org/projects-programs/historic-preservation>