



**TO:** Mayor and Councilmembers

**FROM:** Charles W. Ebeling Public Works Director

**CONTACT:** Marti Milan, Principal Civil Engineer

**SUBJECT:** Notice of Completion for Street Improvements at 749/759 Ward Drive

**RECOMMENDATION:**

- A. Adopt Resolution No. 19-\_\_\_\_ entitled "A Resolution of the City Council of the City of Goleta, California, Authorizing the Filing of a Notice of Completion for Street Improvements at 749/759 Ward Drive"; and
- B. Direct the City Clerk to file a Notice of Completion.

**BACKGROUND:**

As a Condition of Approval for the approval of Parcel Map 32,058, the City of Goleta required Ed Mark, Mark Family Trust and Santa Barbara Rentals and Marcus S. Metzler of Industrial West (Developers) to install frontage improvements along Ward Drive (Public Improvements) in accordance with the Subdivision Map Act, prior to issuance of the Certificate of Occupancy for the proposed developments.

The City Council authorized the Public Works Director to approve final improvement plans "749 & 759 Ward Drive Street Improvements" on March 20, 2018. At the same meeting, the City Council authorized the City Manager to execute the Public Improvement Agreement for the construction of the public street improvements within the public right-of-way, generally including installation of curb, gutter, sidewalks and bike lane on the westerly side of Ward Drive.

**DISCUSSION:**

Following the approval of the Public Improvement Plans, the developer constructed the improvements for Ward Drive. Work consisted of constructing frontage improvements on the westerly side of Ward Drive at 749 and 759 Ward Drive as described above.

The work was substantially completed on December 11, 2018, Public Works staff worked with the developer's representative to finalize the Record Drawings. Record

Drawings of the improvements constructed are attached to this report (Attachment 1). A full-size set of the drawings is available with the City Clerk for review.

Staff recommends that the City Council: adopt the proposed resolution to accept the Public Improvements (Attachment 2), approve a Notice of Completion for the Public Improvements, and direct the City Clerk to file the Notice of Completion for Public Improvements with the County of Santa Barbara, County Recorder Office (Attachment 3).

**FISCAL IMPACTS:**

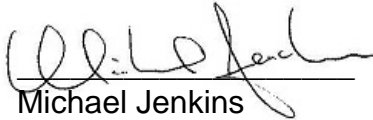
Acceptance of the Public Improvements will have no fiscal impact on the City. All plan check and encroachment permit costs associated with the Public Improvements have been paid by the developer.


**ALTERNATIVES:**

No other alternatives are proposed as the developer has complied with and completed the public improvements as required by the City.

**Legal Review By:**

**Approved By:**

  
Michael Jenkins  
City Attorney

  
Michelle Greene  
City Manager

**ATTACHMENTS:**

1. Record Drawings of the 749/759 Ward Drive Street Improvements
2. A Resolution of the City Council of the City of Goleta, California, Authorizing the Filing of a Notice of Completion for 749/749 Ward Drive Street Improvements.
3. Notice of Completion.

## **Attachment 1**

Record Drawings for Street Improvements at 749/759 Ward Drive

# 749 & 759 WARD DRIVE STREET IMPROVEMENT PLANS CITY OF GOLETA, CALIFORNIA

## LIST OF SYMBOLS:

AC	ASPHALTIC CONCRETE
BC	BEGIN CURVE
BD	BASEMENT DRAIN
BM	BENCHMARK
BVC	BEGIN VERTICAL CURVE
BW	BACK OF WALK
CL	CLASS
L OR CL	CENTERLINE
CLR	CLEAR
CO	CLEANOUT
CTV	CABLE TELEVISION
E	ELECTRICAL
EC	END CURVE
EG	EXISTING GRADE
EL	ELEVATION
EP	EDGE OF PAVEMENT
EVC	END VERTICAL CURVE
EX	EXISTING
FDC	FIRE DEPARTMENT CONNECTION
FG	FINISH GRADE
FH	FIRE HYDRANT
L OR FL	FLOWLINE
FS	FINISH SURFACE
G	GAS
GB	GRADE BREAK
GM	GAS METER
HP	HIGH POINT
INV	INVERT
L	CURVE LENGTH
LF	LINEAL FEET
MH	MANHOLE
PL OR PL	PROPERTY LINE
PVC	POLY-VINYL CHLORIDE
R	RADIUS
RW	RIGHT-OF-WAY
S	SEWER
SD	STORM DRAIN
SL	STREET LIGHT
STA	STATION
STD DTL	STANDARD DETAIL
T	TELEPHONE
TC	TOP OF CURB
TI	TRAFFIC INDEX
TYP	TYPICAL
TW	TOP OF WALL
VPI	VERTICAL POINT OF INTERSECTION (OF VERTICAL CURVE TANGENTS)
W	WATER
WM	WATER METER
Δ	DELTA (CURVE CENTRAL ANGLE)
±	APPROXIMATELY
%	PERCENT
<	LESS THAN
>	GREATER THAN

## RECORD DRAWING DISCLAIMER

THESE CONSTRUCTION DOCUMENTS HAVE BEEN REVISED TO CREATE "RECORD DRAWINGS" BASED ON INFORMATION PROVIDED BY LASH CONSTRUCTION TO REFLECT THE CONTRACTOR'S REPRESENTATIONS OF THE WORK AS CONSTRUCTED. NEITHER THE CITY OF GOLETA NOR THE ENGINEER HAS VERIFIED THE ACCURACY AND / OR COMPLETENESS OF THIS INFORMATION AND SHALL NOT BE RESPONSIBLE FOR ANY ERROR AND / OR OMISSION WHICH MAY BE INCORPORATED INTO THESE DRAWINGS. PERSONS USING THESE DRAWINGS SHOULD MAKE THEIR OWN INDEPENDENT FIELD INVESTIGATIONS TO CONFIRM LOCATIONS OF UNDERGROUND FACILITIES PRIOR TO EXCAVATION IN AREAS COVERED BY THESE DRAWINGS.

RECORD DRAWING DATE: 12/10/18

## IMPORTANT NOTICE

ALL UTILITY LOCATIONS ARE APPROXIMATE. CONTRACTOR IS TO NOTIFY UNDERGROUND SERVICE ALERT TWO WORKING DAYS PRIOR TO STARTING ANY EXCAVATION OR RESURFACING.



Know what's below.  
Call before you dig.

## LEGEND:

DESCRIPTION	EXISTING	PROPOSED
CENTERLINE		
EDGE OF A.C. PAVEMENT		
ELEVATION	100.00 OR 100.00	100.00
CONCRETE PAVEMENT		
A.C. PAVEMENT		
PROPERTY LINE		
RIGHT-OF-WAY LINE		
EASEMENT LINE		
CONTOURS (MAJOR)	10	10
CONTOURS (MINOR)	12	12
BENCH MARK		
TREE CANOPY		
APPROX. SAW CUT LINE		
LIMIT OF GRADING LINE		
GRADE BREAK LINE		
FLOW LINE		
SLOPE LINE		
FENCE		
SCREEN/RETAINING WALL		
WATER		
SEWER		
STORM DRAIN		
POWER		
GAS		
TELEPHONE		
CABLE TV		
MANHOLE		
CLEANOUT		
WATER METER & LATERAL		
FIRE HYDRANT		
STREET LIGHT		

## OWNERS RESPONSIBILITIES:

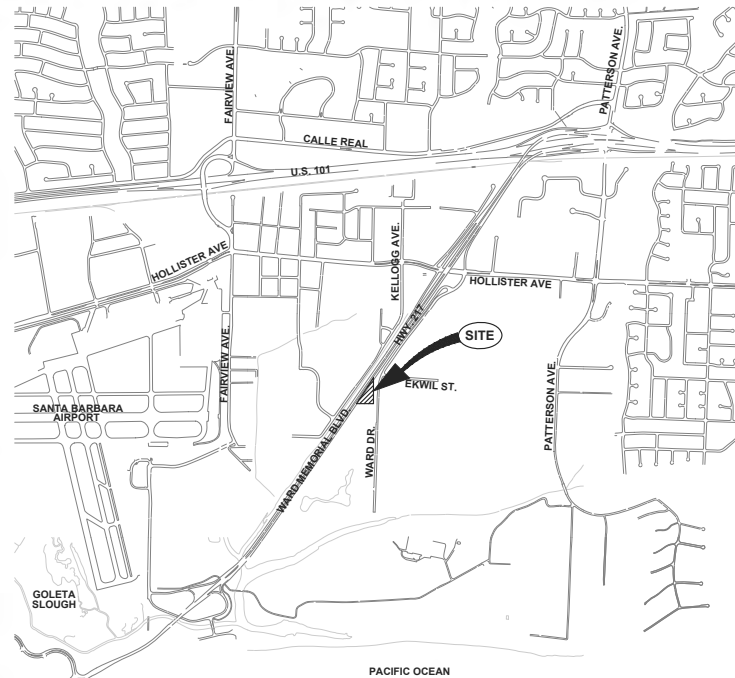
A. PRIOR TO COMMENCING CONSTRUCTION CALLED FOR BY THESE PLANS, SPECIFICATIONS AND DETAILS, THE OWNER SHALL ENGAGE A GEOTECHNICAL ENGINEER TO PROVIDE CONSTRUCTION PHASE OBSERVATION AND TESTING SERVICES. AN SHALL ALSO ENGAGE THE PROJECT ENGINEER OR ANOTHER QUALIFIED PARTY TO PROVIDE PROJECT CONSTRUCTION OBSERVATION AND ASSURANCE ON CONFORMANCE WITH THE APPROVED PLANS, SPECIFICATIONS AND AGENCY REQUIREMENTS. THE OWNER SHALL ALSO ASSURE THAT CONTRACTOR(S) ENGAGED TO PROPERLY IMPLEMENT THE CONSTRUCTION CALLED FOR ON THESE PLANS, SPECIFICATIONS AND DETAILS INCLUDING THOSE TASKS CALLED FOR ON THE PROJECT STORM WATER POLLUTION PREVENTION PLAN DOCUMENT OR EROSION CONTROL PLAN SHEETS ATTACHED AS PART OF THESE PLANS.

## B. GEOTECHNICAL ENGINEER'S RESPONSIBILITIES:

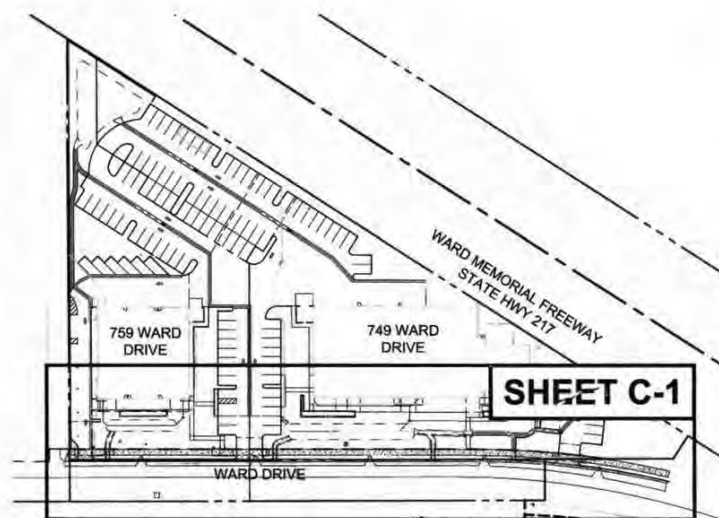
- A GEOTECHNICAL ENGINEER SHALL REVIEW THESE PLANS WITH RESPECT TO GENERAL CONFORMANCE WITH THE INTENT OF THE RECOMMENDATIONS PRESENTED IN THE PROJECT SOILS ENGINEERING REPORT. THE PLAN REVIEW SHALL BE PERFORMED SPECIFICALLY WITH RESPECT TO GEOTECHNICAL FACTORS DISCUSSED IN THE REFERENCED REPORT. IN PERFORMING THE REVIEW, A GEOTECHNICAL ENGINEER SHALL ATTEMPT TO VERIFY THAT THE CONCEPTS AND RECOMMENDATIONS PRESENTED IN THE REPORT ARE GENERALLY INCORPORATED INTO THE PLANS. IN ACCORDANCE WITH THIS LEVEL REVIEW, THE PLANS ARE TO BE FOUND IN SUBSTANTIAL CONFORMANCE WITH THE CONCEPTS AND RECOMMENDATIONS PRESENTED IN THE NOTED REPORT.
- UPON BEING RETAINED BY THE OWNER, PRIOR TO CONSTRUCTION THE GEOTECHNICAL ENGINEER SHALL RECOMMEND TO THE OWNER AND THE CONTRACTOR THE LEVEL OF OBSERVATION AND TESTING THAT WILL BE PROVIDED DURING CONSTRUCTION. PROVIDED THAT THE CONTRACTOR FULFILLS HIS OR HER RESPONSIBILITY FOR TIMELY REQUESTS FOR THOSE SERVICES DURING CONSTRUCTION. THE GEOTECHNICAL ENGINEER SHALL PROVIDE OBSERVATION AND TESTING AT THE PROJECT WORK AREA OF EARTHWORK OPERATIONS, INCLUDING TRENCHING AND PAVEMENT SUBGRADE PREPARATION, AS NECESSARY TO HAVE REASONABLE CERTAINTY THAT THE EARTHWORK IS PERFORMED IN GENERAL COMPLIANCE WITH THE GEOTECHNICAL ENGINEER'S RECOMMENDATIONS, AND WITH THE REQUIREMENTS OF THE CITY OF SANTA BARBARA.
- UPON COMPLETION OF EARTHWORK, THE GEOTECHNICAL ENGINEER SHALL, UPON REQUEST, PROVIDE A FINAL REPORT WITH RESULTS OF THEIR OBSERVATION AND TESTING DURING EARTHWORK OPERATIONS. PROVIDED THAT THE WORK IS PERFORMED IN CONFORMANCE WITH THE GEOTECHNICAL ENGINEER'S RECOMMENDATIONS, THE REPORT WILL STATE THEIR OPINION THAT THE GRADING WAS COMPLETED IN SUBSTANTIAL COMPLIANCE WITH THE GEOTECHNICAL ENGINEER'S RECOMMENDATIONS.

## C. CONTRACTORS STORM WATER POLLUTION CONTROL RESPONSIBILITIES:

- THE CONTRACTOR SHALL BE RESPONSIBLE TO CONSTRUCT AND MAINTAIN POLLUTION PREVENTION MEASURES, INCLUDING THOSE FOR EROSION AND SEDIMENT CONTROL, AS NECESSARY TO PREVENT ANY POLLUTANT AT ANY LEVEL FROM BEING CONVEYED OFF THE CONSTRUCTION SITE AND THAT THESE MEASURES MUST CONTINUE TO BE MAINTAINED UNTIL THE REQUIRED POST-CONSTRUCTION POLLUTION PREVENTION MEASURES ARE IN PLACE AND COMPLETELY FUNCTIONAL, INCLUDING PERMANENT LANDSCAPING.
- THE SPECIFIC MEASURES WHICH MAY BE CALLED FOR ON THE PROJECT STORM WATER POLLUTION PREVENTION PLAN CANNOT ADDRESS ALL SITE DEVELOPMENT AND STORM CHARACTERISTICS WHICH WILL EVOLVE OVER THE COURSE OF CONSTRUCTION AND THAT IT IS THE CONTRACTOR'S RESPONSIBILITY TO NOT ONLY IMPLEMENT THE PLAN, BUT TO MAKE ADJUSTMENTS AND EXPANSIONS IN THE IMPLEMENTATION AS NECESSARY TO ADAPT TO THE CONTRACTOR'S CONSTRUCTION OPERATIONS AND SCHEDULE AND ADDRESS EVOLVING SITE CONDITIONS AND ACTUAL WEATHER CONDITIONS.
- IT IS THE CONTRACTOR'S RESPONSIBILITY TO ENSURE EMPLOYEES AND SUBCONTRACTORS ARE TRAINED REGARDING THESE REQUIREMENTS AND TO MAINTAIN RECORDS OF THE INSTALLATION, MODIFICATION, INSPECTION, AND MAINTENANCE OF STORM WATER POLLUTION PREVENTION MEASURES INCLUDING, BUT NOT LIMITED TO: TRAINING, INSPECTION, MAINTENANCE LOG; RECORD DRAWINGS SHOWING LOCATIONS, LIMITS, AND DATES OF INSTALLATION FOR VARIOUS MEASURES; DATED PHOTOGRAPHS AND FIELD SKETCHES.
- THE CONTRACTOR SHALL BE FAMILIAR WITH AND AGREE TO IMPLEMENT THE MEASURES AND INSTALLATIONS DEPICTED ON THE PROJECT STORM WATER POLLUTION PREVENTION PLAN INCLUDING INSTALLATION, ROUTINE INSPECTION AND MAINTENANCE, ADJUSTMENTS AND EXPANSION DUE TO EVOLVING SITE CONDITIONS, EMERGENCY MAINTENANCE AND ADJUSTMENTS DUE TO ACTUAL STORM AND SITE CONDITIONS, AND DOCUMENTATION.



VICINITY MAP  
NOT TO SCALE



KEY MAP  
NOT TO SCALE

## USE OF PLANS

THIS DRAWING IS PROVIDED IN AN ELECTRONIC FORMAT (ON COMPUTER DISK) AS A COURTESY IF REQUESTED BY THE USER. THE DELIVERY OF THE ELECTRONIC FILE DOES NOT CONSTITUTE THE DELIVERY OF OUR PROFESSIONAL WORK PRODUCT. THE SIGNED HARD COPY PREPARED FOR THE PROJECT CONSTITUTES OUR PROFESSIONAL WORK PRODUCT AND THE HARD COPY MUST BE REFERRED TO FOR THE CORRECT DESIGN INFORMATION. THESE PLANS HAVE BEEN PREPARED SOLELY FOR USE FOR THE PROJECT SCOPE AND SITE SPECIFICALLY IDENTIFIED HEREON AT THE TIME THESE PLANS ARE SIGNED. THE ENGINEER PREPARING THESE PLANS WILL NOT BE RESPONSIBLE FOR, OR LIABLE FOR, USE OF ANY PART OF THESE PLANS, INCLUDING ANY NOTE OR DETAIL, FOR ANY UNAPPROVED OR REVISED PROJECT SCOPE, OR FOR ANY OTHER PROJECT AT THIS OR ANY OTHER SITE. USER AGREES TO INDEMNIFY AND HOLD HARMLESS F&A FOR ALL COSTS AND DAMAGES IF USED.

## USE OF ELECTRONIC INFORMATION

ELECTRONIC INFORMATION MAY BE PROVIDED BY THE ENGINEER FOR CONVENIENCE, UNDER NO CIRCUMSTANCES SHALL DELIVERY OF ELECTRONIC FILES FOR USE BY OTHERS BE DEEMED A SALE BY THE ENGINEER AND THE ENGINEER MAKES NO WARRANTIES, EITHER EXPRESS OR IMPLIED, OF MERCHANTABILITY AND FITNESS FOR ANY PARTICULAR PURPOSE. IN NO EVENT SHALL THE ENGINEER BE LIABLE FOR INDIRECT OR CONSEQUENTIAL DAMAGES AS A RESULT OF THE USE OR REUSE OF THE ELECTRONIC FILES BY OTHERS.

ELECTRONIC INFORMATION IS INTENDED TO PROVIDE INFORMATION SUPPLEMENTAL AND SUBORDINATE TO THE CONSTRUCTION CONTRACT DOCUMENTS. LAYOUT AND CONSTRUCTION OF PROJECT ELEMENTS SHALL BE BASED ON DIMENSIONS AND INFORMATION INCLUDED ON THE SIGNED AND SEALED CONSTRUCTION CONTRACT DOCUMENTS WHICH SHALL CONTROL OVER ELECTRONIC INFORMATION. USER IS RESPONSIBLE FOR CONFIRMING LOCATION OF PROPOSED IMPROVEMENTS BASED ON DIMENSIONS AND INFORMATION INCLUDED ON THE CONSTRUCTION CONTRACT DOCUMENTS; INCONSISTENCIES BETWEEN THE ELECTRONIC INFORMATION AND THE CONSTRUCTION CONTRACT DOCUMENTS SHALL BE BROUGHT TO THE ATTENTION OF THE ENGINEER FOR RESOLUTION PRIOR TO CONSTRUCTION.

PROJECT ELEMENTS SUCH AS MANHOLES, CATCH BASINS, UTILITY VAULTS, VALVE ASSEMBLIES, STAIRS, RAMPS, WALLS, ETC. ARE SHOWN SCHEMATICALLY IN THE ELECTRONIC INFORMATION AND CONSTRUCTION OF THESE ELEMENTS SHALL BE IN ACCORDANCE WITH THE CONSTRUCTION NOTES AND DETAILS PRESENTED OR REFERENCED IN THE SIGNED AND SEALED CONSTRUCTION CONTRACT DOCUMENTS. IMPROVEMENTS CONSTRUCTED BASED ON ELECTRONIC INFORMATION AND IN CONFLICT WITH THE DRAWING DIMENSIONS DETAILS, AND THE CONSTRUCTION CONTRACT DOCUMENTS SHALL BE REMOVED AND CONSTRUCTED IN THE PROPER LOCATION AND DIMENSIONS AT CONTRACTOR'S SOLE EXPENSE.

DIGITAL DRAWINGS ARE TYPICALLY A COMPILATION OF DRAWINGS FROM A NUMBER OF SOURCES AND, AS SUCH, THERE IS INFORMATION IN THE ELECTRONIC FILE ISSUED BY THE ENGINEER THAT WAS NOT DEVELOPED BY THE ENGINEER AND IS NOT AUTHORIZED BY THE ENGINEER FOR USE BY OTHERS. ELECTRONIC INFORMATION PROVIDED BY THE ENGINEER SHALL ONLY BE APPLICABLE FOR IMPROVEMENTS DESIGNED BY THE ENGINEER AND WHICH ARE SPECIFICALLY DESIGNATED BY CONSTRUCTION NOTES AND/OR DETAILS ON THE SIGNED AND SEALED CONTRACT DOCUMENTS.

IF DIGITAL FILES ARE OBTAINED WITH THE INTENT TO USE THEM FOR PROJECT STAKING, THEY SHALL ONLY BE USED BY A QUALIFIED ENGINEER OR LAND SURVEYOR REGISTERED IN THE STATE OF CALIFORNIA. DIGITAL INFORMATION SHALL ONLY BE USED FOR STAKING HORIZONTAL LOCATION OF PROPOSED IMPROVEMENTS AFTER IT HAS BEEN CONFIRMED WITH THE SIGNED AND SEALED CONSTRUCTION CONTRACT DOCUMENTS.

THE DIGITAL DRAWINGS ARE NOT INTENDED TO BE USED DIRECTLY FOR CONTROL OF CONTRACTOR'S GRADING OPERATIONS WITHOUT STAKING BY ENGINEER OR LAND SURVEYOR. THE INTERSECTION OF PROPOSED CUT AND FILL SLOPES WITH EXISTING GRADE IS APPROXIMATE WHERE SHOWN ON THE DRAWINGS AND SHALL BE CONFIRMED BY FIELD STAKING. IT IS THE CONTRACTOR'S RESPONSIBILITY TO CONSTRUCT SLOPES IN CONFORMANCE WITH THE SPECIFIED AND DETAILED REQUIREMENTS CONTAINED IN THE CONTRACT DOCUMENTS.

## INITIAL BENCHMARK:

VERTICAL DATUM IS NAVD 88

ELEVATION = 41.11 FEET.

## LOCAL BENCHMARK:

PT #206 A SCRIBED X ON THE ISLAND AT THE HOLLISTER AVENUE EXIT RAMP FROM HIGHWAY 217 AND WARD DRIVE.

CAUTION: CONFIRM BENCHMARK DATA AND CONDITION WITH PROJECT SURVEYOR (WATERS CARDENAS LAND SURVEYING, INC.) PRIOR TO USE. CONTRACTOR SHALL NOTIFY ENGINEER OF ANY DISCREPANCIES OR CHANGES PRIOR TO CONSTRUCTION.

## TOPOGRAPHY:

EXISTING TOPOGRAPHY COMPILED BY WATERS CARDENAS LAND SURVEYING, LLP, DATED APRIL 2015, SUPPLEMENTED BY FIELD SURVEY(S) BY WATERS CARDENAS LAND SURVEYING, LLP, DATED JULY 2017.

HORIZONTAL COORDINATE BASIS IS NAD 83

## CONTROL POINTS:

CP #X (NORTHING, EASTING, ELEVATION = DESCRIPTION [e.g.: 1975728.5192, 8042795.8296, 355.44 = PK NAIL])

CP #1	(1983442.3291, 8012243.9313, 16.820 = SET MAG - WLS CP WASHER)
CP #2	(1983140.0797, 8012307.8502, 16.443 = SET MAG SPIKE - CTL FLAGGING 3' W L Y EP)
CP #3	(1983238.9128, 8012004.6301, 13.820 = SET MAG - WLS CTL WASHER TOP AC CURB 8' SE L Y PP NO 4238913E)
CP #4	(1983447.0872, 8012119.7261, 14.917 = SCRIBED X CONC V-GUTTER @ W L Y END 1.5 N L Y CP)
CP #5	(1983711.5811, 8012372.1563, 19.697 = MAG SPIKE 3' E L Y CP)
CP #6	(1983564.4052, 8012135.3184, 16.288 = MAG - WLS CTL WASHER FLUSH 2.5 NW L Y COR CONC DECK)
CP #7	(1983636.3632, 8012169.2939, 17.713 = MAG - WLS CTL WASHER FLUSH 2 NW L Y BLD COR)
CP #8	(1983935.6938, 8012399.6710, 20.989 = ST MAG - WLS CTL WASHER 6' E L Y OF N L Y GUY PP 137190E)
CP #9	(1985114.5918, 8013245.8489, 36.781 = SET MAG - WLS CTL WASHER 5' W L Y S L Y END BIKE LANE WHITE STRIPE)

## SURVEY MONUMENT PROTECTION:

PROTECT AND PRESERVE, IN PLACE, ALL SURVEY MONUMENTS AND BENCHMARKS. DO NOT DISTURB, MOVE, OR RELOCATE MONUMENTS OR BENCHMARKS WITHOUT THE PRIOR REVIEW AND APPROVAL BY THE AGENCY HAVING JURISDICTION OVER THE MONUMENT OR BENCHMARK. THE CONTRACTOR SHALL CONTRACT WITH A LICENSED SURVEYOR FOR MONUMENTS REQUIRING DISTURBANCE OR REMOVAL, AND THE SURVEYOR SHALL RESET THE MONUMENTS OR PROVIDE PERMANENT WITNESS MONUMENTS AND FILE THE REQUIRED DOCUMENTATION WITH THE COUNTY SURVEYOR PURSUANT TO BUSINESS AND PROFESSIONAL CODE SECTION 8771.

## SHEET INDEX:

SHEET NO.	GENERAL DESCRIPTION
1	G-1 TITLE SHEET
2	G-2 GENERAL NOTES
3	C-1 PLAN & PROFILE
4	CD-1 DETAILS
5	CD-2 DETAILS
6	CD-3 DETAILS

## STATE WATER RESOURCES CONTROL BOARD

WDID# 3 42C382023

NOTE: REVIEW BY THE CITY ENGINEER SHALL IN NO WAY RELIEVE THE DEVELOPER AND/OR THEIR ENGINEERS FROM RESPONSIBILITY FOR THE DESIGN OF THE IMPROVEMENTS AND FOR ANY DEFICIENCIES RESULTING FROM THE DESIGN THEREOF OR FROM ANY REQUIRED CONDITIONS OF APPROVAL FOR THE PROJECT.

CITY OF GOLETA, CA  
REVIEWED BY:

SIGNATURE

DATE

PERMIT No.

W.O. 1554

TITLE SHEET

STREET IMPROVEMENT PLANS  
749 & 759 WARD DRIVE  
CITY OF GOLETA, CALIFORNIA

JANUARY 17, 2018

G-1

SHT. 1 OF 6

GENERAL NOTES:

1. UNLESS MODIFIED OR OTHERWISE SPECIFIED BY THE CONSTRUCTION NOTES THAT FOLLOW HEREON INCLUDING THOSE UNDER SEPARATE HEADINGS, MATERIALS AND CONSTRUCTION SHALL BE IN ACCORDANCE WITH THE SANTA BARBARA COUNTY DEPARTMENT OF PUBLIC WORKS TRANSPORTATION DIVISION ENGINEERING DESIGN STANDARDS, SEPTEMBER 2011, HEREINAFTER REFERRED TO AS STANDARD SPECIFICATIONS.

THE CITY OF GOLETA PUBLIC WORKS DIRECTOR HAS THE AUTHORITY TO APPROVE THE USE OF DESIGN STANDARDS AND SPECIFICATIONS FROM THE COUNTY OF SANTA BARBARA PUBLIC WORKS, STANDARD PLANS AND STANDARD SPECIFICATIONS FOR PUBLIC WORKS CONSTRUCTION ("GREENBOOK"), AND CALTRANS PLANS AND SPECIFICATIONS AS APPROPRIATE.

ALL REFERENCED SPECIFICATIONS, CODES, DRAWINGS, AND DETAILS SHALL BE INCORPORATED INTO THESE PLANS AND MADE A PART HEREOF AS IF SPELLED OUT OR DELINEATED IN THEIR ENTIRETY HEREOF.

2. OTHER UNDERGROUND AND OVERHEAD CONSTRUCTION IN ADDITION TO THAT SHOWN ON THESE PLANS IS PROPOSED FOR THIS PROJECT, INCLUDING THAT FOR GOLETA WATER DISTRICT, GOLETA WEST SANITARY DISTRICT, SOUTHERN CALIFORNIA Edison, THE GAS COMPANY, VERIZON/COR COMMUNICATIONS, ADDITIONAL CITY AND OTHER AGENCY PERMITS MAY BE REQUIRED.

CONTRACTOR SHALL BE RESPONSIBLE FOR COORDINATING WORK AND INTERFACING IMPROVEMENTS WITH WORK BY OTHER CONTRACTORS AT THIS JOB SITE AND WITH IMPROVEMENTS REQUIRED BY PLANS BY OTHERS.

CONTRACTOR SHALL REFER TO ARCHITECTURAL PLANS FOR BUILDING AND SITE LAYOUT DIMENSIONING.

CONTRACTOR SHALL REFER TO ARCHITECTURAL AND LANDSCAPE ARCHITECTURAL PLANS AND SPECIFICATIONS FOR SITE DEVELOPMENT CONSTRUCTION DETAILS AND DIMENSIONING INCLUDING THOSE FOR BUILDINGS, PATIOS, WALKWAYS, DRIVEWAYS, WALLS/FENCES, PLUMBING, ELECTRICAL, UTILITIES, LANDSCAPING, AND IRRIGATION.

3. ALL WORK SHALL BE DONE IN CONFORMANCE WITH THE RECOMMENDATIONS CONTAINED IN THE GEOTECHNICAL REPORTING AND GEOLOGICAL REPORTS FOR THIS PROJECT INCLUDING THOSE LISTED BELOW:

PREPARED BY: EARTH SYSTEMS SOUTHERN CALIFORNIA PROJECT NO. IT-25393-01 DATE 7/27/17

THESE REPORTS AND ANY ADDENDA SHALL BE INCORPORATED INTO THESE PLANS AND MADE A PART HEREOF AS IF SPELLED OUT OR DELINEATED IN THEIR ENTIRETY HEREOF. IT IS CONTRACTOR'S RESPONSIBILITY TO REVIEW THE APPLICABLE GEOTECHNICAL AND GEOLOGY REPORTS. CONTRACTOR SHALL CONTACT THE GEOTECHNICAL ENGINEER [AND THE GEOLOGIST] TO OBTAIN OR REVIEW COPIES OF THESE REPORTS AND ADDENDA.

PRIOR TO BIDDING, CONTRACTOR SHALL CONTACT THE GEOTECHNICAL ENGINEER TO DETERMINE THE LOCATION AND DEPTH OF ALL TEST BORINGS AND EXPLORATORY PITS AND EXCAVATIONS. CONTRACTOR SHALL DETERMINE FROM THE GEOTECHNICAL ENGINEER WHAT REMEDIAL WORK IS RECOMMENDED TO MAKE THESE DISTURBED LOCATIONS SUITABLE FOR THE PROPOSED IMPROVEMENTS. CONTRACTOR SHALL INCLUDE IN HIS BID ALL COSTS FOR THE REMEDIAL WORK AND SHALL ADJUST HIS OPERATIONS TO PROPERLY SEQUENCE THE WORK TO ACCOMMODATE REMEDIAL WORK WITH CONSTRUCTION OF PROPOSED IMPROVEMENTS.

4. ALL MATERIALS AND CONSTRUCTION SHALL BE IN ACCORDANCE WITH APPLICABLE HEALTH AND SAFETY LAWS, ORDINANCES, REGULATIONS, RULES, AND STANDARDS INCLUDING ALL REQUIREMENTS OF THE STATE OF CALIFORNIA DIVISION OF INDUSTRIAL SAFETY AND OF CAL-OSHA.

5. CONTRACTOR SHALL BE SOLELY RESPONSIBLE FOR VEHICULAR AND PEDESTRIAN TRAFFIC CONTROL AND SAFETY AND SHALL FURNISH AND MAINTAIN SUCH WARNING SIGNS, LIGHTS, TRENCH PLATES, BARRICADES, AND/OR OTHER PROTECTION AS IS NECESSARY FOR SAID CONTROL AND SAFETY.

6. CONTRACTOR SHALL FURNISH, INSTALL, AND MAINTAIN SUCH SHEETING, SHORING, BRACING, AND/OR OTHER PROTECTION AS IS NECESSARY TO PREVENT FAILURE OF TEMPORARY EXCAVATIONS AND EMBANKMENTS AND TO PREVENT DAMAGE TO EXISTING IMPROVEMENTS, TEMPORARY IMPROVEMENTS, AND PARTIALLY COMPLETED PORTIONS OF THE WORK. CONTRACTOR SHALL BE SOLELY RESPONSIBLE FOR THE SUFFICIENCY OF SUCH SUPPORTS AND/OR OTHER PROTECTION.

7. BEFORE BEGINNING WORK, CONTRACTOR SHALL CONFIRM WITH AGENCIES HAVING JURISDICTION THAT ALL REQUIRED PERMITS AND LICENSES HAVE BEEN OBTAINED AND ALL REQUIRED NOTICES GIVEN.

CONTRACTOR SHALL NOT BEGIN WORK BEFORE GENERAL CONSTRUCTION ACTIVITY STORM WATER PERMIT HAS BEEN OBTAINED FROM, OR HAS BEEN DETERMINED TO NOT BE REQUIRED BY, THE STATE WATER RESOURCES CONTROL BOARD-CENTRAL COAST REGION.

8. BEFORE BEGINNING WORK, CONTRACTOR SHALL CONTACT THE CITY ENGINEER, THE CITY PLANNING AND DEVELOPMENT DEPARTMENT, THE UTILITY COMPANIES, THE GEOTECHNICAL ENGINEER, AND THE ENGINEER (FLOWERS & ASSOCIATES, INC.) AND SHALL DETERMINE FROM EACH: (1) SCOPE OF WORK TO BE OBSERVED AND BY WHOM, (2) SCOPE OF TESTING, AND (3) ADVANCE NOTICE REQUIRED (MINIMUM OF 72 HOURS).

DURING THE COURSE OF WORK, CONTRACTOR SHALL BE RESPONSIBLE FOR CALLING FOR OBSERVATION AND TESTING AS STIPULATED PURSUANT TO ABOVE DETERMINATIONS.

WORK NOT OBSERVED AND TESTED WILL BE SUBJECT TO REJECTION.

9. ALL UNSUITABLE CONSTRUCTION MATERIALS AND RUBBISH AND DEBRIS SHALL BE REMOVED FROM THE JOB SITE, BE TRANSPORTED TO A SUITABLE LOCATION, AND BE DISPOSED OF IN A PROPER AND LEGAL MANNER.

10. CONTRACTOR SHALL SCHEDULE GRAVITY PIPELINE WORK AHEAD OF ANY UNDERGROUND CONDUIT CONSTRUCTION.

11. GRAVITY SEWER AND STORM DRAIN WORK SHALL BEGIN AT THE LOWEST POINT OF DISCHARGE AND PROCEED UPSTREAM.

12. ALL WORK INVOLVING EXCAVATION, INCLUDING THAT FOR WATER, SEWER, STORM DRAIN AND UTILITY CONDUITS AND ALL SERVICE CONNECTIONS AND METER BOXES (NOT PERMITTED IN DRIVEWAYS) SHALL BE COMPLETED AND OBSERVED AND APPROVED BY THE AGENCY HAVING JURISDICTION AND THE STRUCTURAL BACKFILL OBSERVED AND TESTED FOR COMPACTION AND APPROVED BY THE GEOTECHNICAL ENGINEER AND THE CITY OF GOLETA BEFORE AGGREGATE BASE, PAVING AND OTHER PERMANENT SURFACE CONSTRUCTION MAY COMMENCE.

13. BEFORE BEGINNING WORK, CONTRACTOR SHALL DETERMINE OR VERIFY THE LOCATION AND FLOWLINE ELEVATION OF ALL EXISTING WATER, SEWER, AND DRAINAGE STRUCTURES AND/OR CONDUITS TO BE JOINED BY NEW CONSTRUCTION.

BEFORE BEGINNING WORK, CONTRACTOR SHALL DETERMINE OR VERIFY THE LOCATION AND DEPTH OF ALL EXISTING STRUCTURES AND/OR CONDUITS WHICH CROSS OR OTHERWISE MAY CONFLICT WITH NEW CONSTRUCTION.

GRADING NOTES:

1. GRADING SHALL BE IN CONFORMANCE WITH THESE PLANS AND SANTA BARBARA COUNTY CODE CHAPTER 14 (GRADING ORDINANCE NO. 4768) AND THE STANDARDS AND REQUIREMENTS PERTAINING THERETO.

2. GRADING SHALL BE IN CONFORMANCE WITH THE SITE SPECIFIC GRADING RECOMMENDATIONS CONTAINED IN THE GEOTECHNICAL REPORT [AND THOSE CONTAINED IN THE GEOLOGY REPORT] REFERENCED IN THE GENERAL NOTES ON THESE PLANS.

GRADING SHALL ALSO BE IN CONFORMANCE WITH RECOMMENDATIONS MADE BY THE GEOTECHNICAL ENGINEER [AND THE GEOLOGIST] DURING OBSERVATION AND TESTING OF SITE DEMOLITION, PREPARATION, GRADING, AND DEVELOPMENT WORK.

FOR ANY CONFLICT BETWEEN THESE PLANS AND THE RECOMMENDATIONS AND/OR SPECIFICATIONS OF THE GEOTECHNICAL ENGINEER [AND THE GEOLOGIST], THE MORE STRINGENT PROVISION SHALL GOVERN.

3. CONTRACTOR SHALL EMPLOY ALL LABOR, EQUIPMENT AND METHODS REQUIRED TO PREVENT HIS OPERATIONS FROM PRODUCING DUST IN AMOUNTS DAMAGING TO PROPERTY, CULTIVATED VEGETATION AND DOMESTIC ANIMALS OR CAUSING A HAZARD TO VEHICULAR TRAFFIC OR CAUSING A NUISANCE TO PERSONS OCCUPYING BUILDINGS, IN THE VICINITY OF THE JOB SITE. CONTRACTOR SHALL BE RESPONSIBLE FOR ANY DAMAGE CAUSED BY DUST RESULTING FROM HIS OPERATIONS. DUST ABATEMENT MEASURES SHALL BE CONTINUED UNTIL RELIEF IS GRANTED BY THE CITY INSPECTOR.

GRADING NOTES (CONT):

4. AREAS TO BE GRADED SHALL BE CLEARED OF ALL VEGETATION (EXCEPT TREES INDICATED TO REMAIN), INCLUDING ROOTS AND ROOT STRUCTURES, OTHER ORGANIC MATERIAL, DEBRIS, NON-COMPLYING FILL, AND OTHER MATERIAL UNSUITABLE FOR SUPPORT OF STRUCTURAL FILL AND/OR PROPOSED IMPROVEMENTS, AS RECOMMENDED BY AND UNDER THE OBSERVATION AND TESTING OF THE GEOTECHNICAL ENGINEER. FOLLOWING CLEARING, AREA IS TO BE THE EDGE AND THE EDGE IS THICKENED (DEEPEMED) TO 6-INCHES FILL. GRADING INSPECTOR TO BE CONTACTED FOR INITIAL INSPECTION.

5. THE CONTRACTOR SHALL MAKE A THOROUGH SEARCH FOR ALL ABANDONED MAN-MADE FACILITIES SUCH AS SEPTIC TANK SYSTEMS, FUEL OR WATER STORAGE TANKS, AND PIPELINES OR CONDUITS. ANY SUCH FACILITIES ENCOUNTERED SHALL BE REMOVED AND THE VOIDS FILLED AND COMPACTED AS RECOMMENDED BY, AND UNDER THE OBSERVATION AND TESTING OF, THE GEOTECHNICAL ENGINEER AND THE CITY OF GOLETA.

VOIDS LEFT FROM OTHER REMOVALS, SUCH AS TREES AND STRUCTURES, SHALL ALSO BE FILLED AND COMPACTED AS RECOMMENDED BY, AND UNDER THE OBSERVATION AND TESTING OF, THE GEOTECHNICAL ENGINEER AND THE CITY OF GOLETA.

IF ABANDONED SEPTIC TANKS OR FUEL TANKS OR OTHER POTENTIAL SOURCES OF CONTAMINATION OR HAZARDOUS WASTE ARE ENCOUNTERED OR IF SOIL WHICH APPEARS TO BE CONTAMINATED IS ENCOUNTERED, CONTRACTOR SHALL IMMEDIATELY NOTIFY OWNER AND COUNTY HAZARDOUS MATERIALS OFFICE.

ABANDONED PIPELINES AND CONDUITS SHALL BE REMOVED UNLESS OTHERWISE ALLOWED BY THE CITY, THE ENGINEER AND THE GEOTECHNICAL ENGINEER. PIPELINES OR CONDUITS ALLOWED TO BE ABANDONED IN-PLACE SHALL BE CRUSHED OR SHALL HAVE ALL EXPOSED OPENINGS PLUGGED WITH STIFF CONCRETE RODDED TO REMOVE VOIDS WITHIN THE PIPELINE/CONDUIT TO A MINIMUM OF 5 LINEAL FEET BEYOND THE OPENING, UNDER THE OBSERVATION OF THE GEOTECHNICAL ENGINEER AND THE CITY OF GOLETA.

6. BEFORE BEGINNING WORK REQUIRING EXPORTING OR IMPORTING OF MATERIALS, THE CONTRACTOR SHALL OBTAIN APPROVAL FROM CITY PUBLIC WORKS DEPT. FOR HAUL ROUTES USED AND METHODS PROVIDED TO MINIMIZE THE DEPOSIT OF SOILS ON CITY STREETS. GRADING/ROAD INSPECTORS SHALL MONITOR THIS REQUIREMENT WITH THE CONTRACTOR.

7. CONTRACTOR SHALL NOTIFY THE CITY PUBLIC WORKS DEPARTMENT, THE GEOTECHNICAL ENGINEER, THE GEOLOGIST, AND THE ENGINEER AT LEAST 48 HOUR BEFORE START OF ANY GRADING WORK AND OF THE TIME AND LOCATION OF PRECONSTRUCTION CONFERENCE.

8. AT THE TIME OF THE PRECONSTRUCTION CONFERENCE THE GEOTECHNICAL ENGINEER IS TO DISCUSS WITH THE CITY INSPECTOR THE LEVEL OF OBSERVATION AND TESTING TO BE REQUIRED.

9. UNDOCUMENTED FILL AND/OR UNSTABLE SOILS ENCOUNTERED DURING GRADING SHALL BE EXCAVATED TO FIRM NATURAL SOILS UNDERLYING THE OBSERVATION AND TESTING OF THE GEOTECHNICAL ENGINEER AND THE CITY OF GOLETA.

OVERWET AND/OR PUMPING AREAS ENCOUNTERED DURING GRADING SHALL BE REVIEWED FOR CORRECTIVE MEASURES BY THE GEOTECHNICAL ENGINEER AND THE CITY OF GOLETA.

10. ALL UNSUITABLE SOIL MATERIALS AND RUBBISH AND DEBRIS RESULTING FROM DEMOLITION AND GRADING OPERATIONS SHALL BE REMOVED FROM THE JOB SITE, BE TRANSPORTED TO A SUITABLE LOCATION, AND BE DISPOSED OF IN A PROPER AND LEGAL MANNER.

11. AREAS TO RECEIVE FILL MATERIAL AND AREAS TO RECEIVE BUILDINGS, EXTERIOR SLABS, WALKWAYS, WALLS, PAVEMENT AND OTHER STRUCTURAL IMPROVEMENTS SHALL BE PREPARED AS RECOMMENDED BY, AND UNDER THE OBSERVATION AND TESTING OF, THE GEOTECHNICAL ENGINEER AND THE CITY OF GOLETA. RECOMMENDATIONS FOR OVEREXCAVATION, ADDITIONAL SCARPING, BACKFILL AND RECOMPACT ARE CONTAINED IN THE GEOTECHNICAL REPORT REFERENCED IN THE GENERAL NOTES ON THESE PLANS.

12. PRIOR TO PLACEMENT OF FILL AND BACKFILL MATERIAL, THE PREPARED AREA SHALL BE INSPECTED AND APPROVED BY THE CITY INSPECTOR AND THE GEOTECHNICAL ENGINEER. ALLOW A MINIMUM 48-HOUR NOTICE. FILL AND BACKFILL PLACED ON THE PREPARED AREA WITHOUT THE REQUIRED OBSERVATION SHALL BE REMOVED.

13. ALL FILL MATERIAL, WHETHER EXCAVATED ON-SITE OR IMPORTED FROM OFF-SITE, SHALL BE TESTED AND APPROVED BY THE GEOTECHNICAL ENGINEER PRIOR TO PLACEMENT.

IMPORTED FILL MATERIAL SHALL BE EQUAL TO OR BETTER IN QUALITY THAN THE ON-SITE SOILS AND SHALL CONFORM TO THE RECOMMENDATION OF THE GEOTECHNICAL ENGINEER. THE GEOTECHNICAL ENGINEER SHALL TEST AND APPROVE THE SOIL PROPOSED FOR IMPORT FOR STRUCTURAL FILL PRIOR TO IMPORTATION TO THE SITE.

THE LANDSCAPE ARCHITECT AND THE GEOTECHNICAL ENGINEER SHALL TEST AND APPROVE THE SOIL PROPOSED FOR IMPORT FOR LANDSCAPE AREA SURFACE MATERIAL PRIOR TO IMPORTATION TO THE SITE.

14. FILL MATERIAL SHALL BE SPREAD IN LIFTS NOT EXCEEDING 8-INCHES IN LOOSE THICKNESS, BE MOISTENED OR CURED AS RECOMMENDED BY THE GEOTECHNICAL ENGINEER, AND BE COMPACTED TO THE MINIMUM RELATIVE COMPACTION OF 90%, AS RECOMMENDED BY THE GEOTECHNICAL ENGINEER. THINNER LIFTS MAY BE NECESSARY TO ACHIEVE THE REQUIRED MINIMUM COMPACTION.

15. FILL AND BACKFILL MATERIAL SHALL BE COMPACTED AT LEAST TO THE SPECIFIED RELATIVE COMPACTION BUT IN NO CASE TO LESS THAN 90% OF MAXIMUM DENSITY, DETERMINED IN CONFORMANCE WITH A.S.T.M. STANDARD D-1557 OR A.S.T.M. D-6908, LATEST REVISION. SOME AREAS REQUIRE COMPACTION TO GREATER DENSITY AS CALLED FOR ON THESE PLANS OR BY THE GEOTECHNICAL ENGINEER.

COMPACTION TESTING SHALL BE CONDUCTED AS DETERMINED BY THE GEOTECHNICAL ENGINEER.

16. FINISH CUT SLOPES, FILL SLOPES AND COMBINATION CUT AND FILL SLOPES SHALL NOT EXCEED A GRADE OF 2 HORIZONTAL TO 1 VERTICAL UNLESS SPECIFICALLY CALLED FOR ON THESE PLANS AND CONSTRUCTED AS RECOMMENDED BY THE GEOTECHNICAL ENGINEER.

17. ALL GRADED AREAS SHALL BE PLANTED IN CONFORMANCE WITH THE APPROVED LANDSCAPING PLAN, IF APPLICABLE AND SHALL OTHERWISE BE PLANTED WITH PERENNIAL VEGETATION APPROVED BY THE CITY PLANNING AND DEVELOPMENT DEPARTMENT AND SHALL BE DENSE AND GROWING PRIOR TO FINAL INSPECTION BY THE CITY.

18. CONTRACTOR SHALL REFER TO THE ARCHITECT'S PLANS FOR ADDITIONAL GRADING REQUIREMENTS IN BUILDING AREAS.

CONTRACTOR SHALL REFER TO LANDSCAPE ARCHITECT'S PLANS FOR TREE PRESERVATION REQUIREMENTS AND FOR SUBGRADE ALLOWANCES IN LANDSCAPE AREAS.

CONTRACTOR SHALL REFER TO STREET IMPROVEMENT PLANS FOR INTERFACING WITH PUBLIC GRADING, PAVING AND STORM DRAINAGE IMPROVEMENTS.

19. UNIFORM GRADIENTS OR VERTICAL CURVES, AS APPROPRIATE, SHALL BE ASSUMED BETWEEN CONTROL ELEVATIONS SHOWN ON THE PLANS.

20. SURFACE DRAINAGE GRADIENT ON SOIL OR LANDSCAPED AREAS SHALL NOT BE AT LESS THAN 2% (1/4" PER FOOT), EXCEPT FOR YARD DRAINAGE SWALES IDENTIFIED ON THE PLANS.

UNLESS INDICATED OTHERWISE ON PLANS, POSITIVE DRAINAGE SHALL BE MAINTAINED:

- A. A MINIMUM OF 5% FROM 10 FEET FROM ALL STRUCTURE FOUNDATION ON SOIL OR IN LANDSCAPE AREAS.  
B. A MINIMUM OF 2% WITHIN 10 FEET OF STRUCTURE FOUNDATION FOR IMPERVIOUS SURFACE.  
C. AWAY FROM ALL SLOPES.

25. WHERE PLANTER AREAS ARE SHOWN ON THE PLANS ADJACENT TO BUILDINGS AND ARE CONTAINED BY WALKS/FLATWORK LESS THAN 6" BELOW BOTTOM OF SILL PLATE OR WHERE ADJACENT FINISH GRADE OUTSIDE A BUILDING IS SHOWN TO BE LESS THAN 6" BELOW BOTTOM OF SILL PLATE, IT IS THE CONTRACTOR'S RESPONSIBILITY TO VERIFY THAT BUILDING PLANS CALL FOR APPROPRIATE DAMPROOF OR WATERPROOF CONSTRUCTION AND THAT SAME IS CONSTRUCTED IN ACCORDANCE WITH LATEST EDITION OF ALL UNIFORM BUILDING CODE REQUIREMENTS.

26. PLAN ELEVATIONS SHOWN ON SOIL AND LANDSCAPED AREAS ARE FINISH GRADE (FINISH SURFACE) ELEVATIONS INTENDED TO ESTABLISH SURFACE DRAINAGE CONTROL FOR THESE AREAS. DURING GRADING OPERATIONS, THICKNESSES (SUBGRADE ALLOWANCES) SPECIFIED BY LANDSCAPE ARCHITECT FOR TURF, WOOD CHIPS, MULCH, ETC. SHALL BE SUBTRACTED FROM THESE ELEVATIONS TO ESTABLISH FINISH SUBGRADE.

27. PLAN ELEVATIONS SHOWN ON WALKWAYS, RAMPS, STEPS AND OTHER HARDSCAPE ARE INTENDED TO ESTABLISH SURFACE DRAINAGE CONTROL FOR THESE AREAS. THESE IMPROVEMENTS, [THESE CONTROL ELEVATIONS SHALL BE ADHERED TO UNLESS OTHERWISE NECESSARY FOR CONSTRUCTION OF THESE IMPROVEMENTS IN CONFORMANCE WITH BUILDING CODE AND A.D.A. REQUIREMENTS.] IT SHALL BE CONTRACTOR'S RESPONSIBILITY TO PERFORM DETAILED LAYOUT FOR AND TO CONSTRUCT WALKWAYS, RAMPS, STEPS, AND OTHER HARDSCAPE IN CONFORMANCE WITH ALL BUILDING CODE AND

GRADING NOTES (CONT):

ACCESSIBILITY REQUIREMENTS INCLUDING THOSE FOR DIMENSIONING, SLOPE, CROSS-SLOPE, SURFACE TEXTURE, WARNING CURBS, AND HAND-RAILS.

28. VERTICAL DISTANCE BETWEEN TOP OF WALK OR FLATWORK EDGE TO ADJACENT FINISH GRADE SHALL NOT EXCEED 3 INCHES UNLESS A 6-INCH HIGH WARNING CURB IS CONSTRUCTED ALONG THE EDGE AND THE EDGE IS THICKENED (DEEPEMED) TO 6-INCHES MINIMUM BELOW ADJACENT FINISH GRADE.

29. SITE FINISH GRADING SHALL BE COMPLETED AND CONFIRMED BY SURVEY, THE ENGINEER, AND THE GENERAL CONTRACTOR TO CONFORM TO APPROVED PLANS AND SPECIFICATIONS BEFORE LANDSCAPING AND IRRIGATION CONSTRUCTION CAN BEGIN.

LANDSCAPE CONTRACTOR SHALL REMOVE FROM THE SITE AND PROPERLY DISPOSE OF ALL EARTH SPILL FROM PLANT HOLES AND PIPE TRENCHES; EXCESS SOIL AND/OR MULCH SHALL NOT BE PLACED OR SPREAD AT THE SITE.

30. THE UPPER 18-INCHES OF FILL OR NATIVE SOIL BELOW THE BOTTOM OF AGGREGATE BASE OR SUBBASE COURSE (BELOW SUBGRADE) IN PAVEMENT AREAS, AND BELOW THE CONCRETE OR SAND COURSE IN WALKWAY AREAS SHALL BE COMPACTED TO A MINIMUM OF 90% OF MAXIMUM DENSITY. THE RESULTING SURFACES SHOULD THEN BE SCARIFIED AN ADDITIONAL 6-INCHES, MOISTURE CONDITIONED, AND RECOMPACTED.

31. BEFORE PLACEMENT OF AGGREGATE BASE OR SUBBASE MATERIAL IN PAVEMENT AREAS, THE SUBGRADE SOIL SHALL BE REVIEWED AND TESTED BY THE GEOTECHNICAL ENGINEER.

DURING PAVING OPERATIONS, STRUCTURAL SECTION COMPACTION SHALL BE OBSERVED AND TESTED BY THE GEOTECHNICAL ENGINEER.

32. SURFACE SOILS CONTAINING ORGANIC MATERIAL, MAYBE STOCKPILED FOR FUTURE USE BY THE LANDSCAPE CONTRACTOR, HOWEVER, THIS OPERATION SHALL BE COORDINATED SO THAT UPON COMPLETION OF THE PROJECT, ALL EXCESS MATERIAL IS REMOVED FROM THE JOB SITE AND FINISH GRADES ARE AS CALLED FOR ON THESE PLANS.

33. ANY EXPANSIVE CLAYS AND OTHER UNSUITABLE SOILS WHICH MAY BE ENCOUNTERED IN THE AREAS TO BE GRADED SHALL BE USED AS FILL MATERIAL ONLY IN NON-CRITICAL AREAS AS DETERMINED BY THE GEOTECHNICAL ENGINEER.

34. QUALITY REVIEW AND REPORTING REQUIREMENTS:

- A. AT CONCLUSION OF ROUGH GRADING, A LICENSED LAND SURVEYOR RETAINED BY OWNER SHALL SPOT CHECK AND PROVIDE TO THE CITY OF GOLETA, THE OWNER AND ENGINEER WRITTEN CERTIFICATION THAT BUILDING PAD GRADE AND PAVEMENT SURFACE ELEVATIONS ARE IN CONFORMANCE WITH APPROVED GRADING PLAN. CERTIFICATION SHALL INCLUDE A DRAWING SHOWING LOCATION OF SPOT ELEVATION READINGS.

- B. UPON COMPLETION OF FINISH GRADING AND AFTER INSTALLATION OF LANDSCAPE PLANTINGS AND IRRIGATION BUT BEFORE PLACEMENT OF ANY MULCH OR WOOD CHIPS, A LICENSED LAND SURVEYOR RETAINED BY THE OWNER SHALL DETERMINE ELEVATIONS AND LOCATIONS OF THE GRADING AT LOCATIONS REQUIRED BY THE ENGINEER, GENERALLY DESCRIBED AS FOLLOWS:

1. BUILDING FINISH FLOOR  
2. FINISH GRADE ALONG BUILDING PERIMETER  
3. WALKWAY / RAMP SLOPES AND CROSS-SLOPES  
4. TOP OF CURB, TOP OF PAVEMENT AND GUTTER FLOWLINE WITHIN PAVED AREAS  
5. FINISH SUBGRADE AT HIGH POINTS, GRADE BREAKS, FLOWLINES AND ADJACENT TO CATCH BASINS WITHIN DIRT AREAS TO BE COVERED WITH MULCH OR WOOD CHIPS

- ELEVATIONS SHALL BE RECORDED ON A SCREENED REPRODUCIBLE OF THE GRADING, DRAINAGE AND PAVING PLAN PROVIDED BY THE ENGINEER.
- C. GRADING AND IMPROVEMENTS FOUND NOT IN CONFORMANCE WITH APPROVED PLANS AND DESIGN INTENT SHALL BE CORRECTED BY CONTRACTOR AT CONTRACTOR'S EXPENSE. ADDITIONAL SURVEYING TO CONFIRM ELEVATIONS AFTER CORRECTIVE MEASURES SHALL ALSO BE AT CONTRACTOR'S EXPENSE.

REQUIREMENTS FOR VARIOUS SURFACING CONDITIONS ARE AS FOLLOWS:

- DIRT: NOT LESS THAN 2% (1/4 INCH PER FOOT) 65% (WHEN ADJACENT TO BUILDINGS) SLOPE IN DIRECTION OF SURFACE DRAINAGE AND 0.10 FOOT MAXIMUM DEVIATION FROM DESIGN ELEVATION AT ANY LOCATION

- A.C. PAVEMENT: NOT LESS THAN 1% (1/8 INCH PER FOOT) SLOPE IN DIRECTION OF SURFACE DRAINAGE AND 0.04 FOOT MAXIMUM DEVIATION FROM DESIGN ELEVATION AT ANY LOCATION

- CONCRETE: NOT LESS THAN 0.5% (1/16 INCH PER FOOT) SLOPE IN DIRECTION OF SURFACE DRAINAGE AND 0.02 FOOT MAXIMUM DEVIATION FROM DESIGN ELEVATION AT ANY LOCATION

- D. FOLLOW-UP REVIEW BY ENGINEER OF MULCHED AREAS SHALL NOT RELIEVE CONTRACTOR OF RESPONSIBILITY FOR ENSURING THAT UNIFORM LAYER OF CORRECT THICKNESS OF MULCH OR CHIPS IS LAID DOWN AND THAT SUCH LAYER DOES NOT OBSTRUCT SURFACE DRAINAGE.

38. "BEST MANAGEMENT PRACTICES FOR CONSTRUCTION ACTIVITIES: ERODED SEDIMENTS AND OTHER POLLUTANTS MUST BE RETAINED ON-SITE AND MAY NOT BE TRANSPORTED FROM THE SITE VIA SHEET FLOW, SWALES, AREA DRAINS, NATURAL DRAINAGE COURSES, OR WIND. STOCKPILES OF EARTH AND OTHER CONSTRUCTION RELATED MATERIALS MUST BE PROTECTED FROM BEING TRANSPORTED FROM THE SITE BY THE FORCES OF WIND OR WATER. FUELS, OIL, SOLVENTS, AND OTHER TOXIC MATERIALS MUST BE STORED IN ACCORDANCE WITH THEIR LISTING AND ARE NOT TO CONTAMINATE THE SOIL AND SURFACE WATERS. ALL APPROVED STORAGE CONTAINERS ARE TO BE PROTECTED FROM THE WEATHER. SPILLS MAY NOT BE WASHED INTO THE DRAINAGE SYSTEM. EXCESS OR WASTE CONCRETE MAY NOT BE WASHED INTO PUBLIC WAY OR ANY OTHER DRAINAGE SYSTEM. PROVISIONS MUST BE MADE TO RETAIN CONCRETE WASTES ON SITE UNTIL THEY CAN BE DISPOSED AS A SOLID WASTE. TRASH AND CONSTRUCTION RELATED SOLID WASTE MUST BE DEPOSITED INTO A COVERED WASTE RECEPTACLE TO PREVENT CONTAMINATION OF RAINWATER AND DISPERSAL BY WIND. SEDIMENTS AND OTHER MATERIAL MAY NOT BE TRACKED FROM THE SITE BY VEHICLE TRAFFIC. THE CONSTRUCTION ENTRANCE ROADWAYS MUST BE STABILIZED SO AS TO INHIBIT SEDIMENTS FROM BEING TRACKED INTO THE PUBLIC WAY. ACCIDENTAL DEPOSITION MUST BE SWEEP UP IMMEDIATELY AND MAY NOT BE WASHED DOWN BY RAIN OR OTHER MEANS. ANY SLOPES WITH DISTURBED SOILS OR DENIVED OF VEGETATION MUST BE STABILIZED SO AS TO MINIMIZE EROSION BY WIND AND WATER."

TRENCHING AND BACKFILL NOTES:

1. TRENCHING, BEDDING AND BACKFILL MATERIALS AND CONSTRUCTION SHALL BE IN ACCORDANCE WITH THESE PLANS INCLUDING THE PIPE TRENCH DETAIL [AND WITH THE PROJECT-SPECIFIC AND APPLICABLE STANDARD REQUIREMENTS OF THE CITY ENGINEER, INCLUDING COUNTY OF SANTA BARBARA PUBLIC WORKS DEPARTMENT (TRANSPORTATION DIVISION) STANDARD DETAILS 1-020, 1-030 AND 1-040].

FOR ANY CONFLICT BETWEEN THESE PLANS AND THE REQUIREMENTS OF THE CITY ENGINEER, THE MORE STRINGENT PROVISIONS SHALL GOVERN.

2. TRENCH OR STRUCTURE EXCAVATION SUBGRADE SHALL BE OBSERVED BY THE GEOTECHNICAL ENGINEER PRIOR TO PLACEMENT OF BEDDING MATERIAL OR FORMS.

WET OR UNSTABLE SOIL ENCOUNTERED IN THE BOTTOM OF THE EXCAVATION AND DEEMED BY THE GEOTECHNICAL ENGINEER TO BE INCAPABLE OF PROPERLY SUPPORTING THE PIPE OR STRUCTURE BEING CONSTRUCTED, SHALL BE REMOVED TO THE DEPTH RECOMMENDED BY THE GEOTECHNICAL ENGINEER AND THE EXCAVATION BACKFILLED TO THE BOTTOM OF THE PIPE OR STRUCTURE GRADE WITH SUITABLE MATERIAL RECOMMENDED BY THE GEOTECHNICAL ENGINEER.

3. WATER ENCOUNTERED IN TRENCH OR STRUCTURE EXCAVATION SHALL BE REMOVED BY THE CONTRACTOR TO THE SATISFACTION OF THE GEOTECHNICAL ENGINEER TO PROVIDE DRY CONDITIONS DURING CONSTRUCTION OF PIPE OR STRUCTURE.

4. BEDDING AND BACKFILL MATERIAL AND THEIR COMPACTED DENSITY SHALL BE TESTED FOR COMPLIANCE WITH APPLICABLE REQUIREMENTS BY THE GEOTECHNICAL ENGINEER AND CITY ENGINEER.

5. BEDDING AND PIPE ZONE BACKFILL MATERIAL SHALL BE COMPACTED TO NOT LESS THAN 95% OF MAXIMUM DENSITY.

TRENCH BACKFILL SHALL BE COMPACTED TO NOT LESS THAN 90% OF MAXIMUM DENSITY; THE UPPER 12" BELOW THE BASE OR SUB-BASE COURSE IN PAVED AND OTHER TRAFFIC AREAS AND BELOW THE CONCRETE OR SAND COURSE IN WALKWAY AREAS SHALL BE COMPACTED TO NOT LESS THAN 85% OF MAXIMUM DENSITY.

BACKFILL COMPACTION SHALL BE TESTED FOR COMPLIANCE WITH THESE REQUIREMENTS IN ACCORDANCE WITH A.S.T.M. STANDARD D-1557 OR A.S.T.M. STANDARD D-6908, LATEST REVISION, AND REPORTED BY THE GEOTECHNICAL ENGINEER.

TRENCHING AND BACKFILL NOTES (CONT):

6. CLASS I OR CLASS II (TRENCH) BACKFILL SHALL NOT BE PLACED UNTIL BEDDING AND INITIAL (PIPE ZONE) BACKFILL HAVE BEEN OBSERVED, TESTED AND APPROVED.

7. COMPACTION BY FLOODING OR JETTING IS NOT PERMITTED UNLESS SPECIFICALLY APPROVED BY THE GEOTECHNICAL ENGINEER AND THE CITY INSPECTOR AND THE OWNER OF THE PIPE OR CONDUIT.

8. ALL WORK INVOLVING EXCAVATION INCLUDING THAT FOR WATER, SEWER, STORM DRAIN AND UTILITY CONDUITS AND ALL SERVICE CONNECTIONS AND METER BOXES (NOT PERMITTED IN DRIVEWAYS) SHALL BE COMPLETED AND OBSERVED AND APPROVED BY THE AGENCY HAVING JURISDICTION AND THE STRUCTURAL BACKFILL OBSERVED AND TESTED FOR COMPACTION AND APPROVED BY THE GEOTECHNICAL ENGINEER AND THE CITY OF GOLETA BEFORE AGGREGATE BASE, PAVING AND OTHER PERMANENT SURFACE CONSTRUCTION MAY COMMENCE.

9. ALL MATERIALS AND CONSTRUCTION SHALL BE IN ACCORDANCE WITH APPLICABLE HEALTH AND SAFETY LAWS, ORDINANCES, REGULATIONS, RULES, AND STANDARDS INCLUDING ALL REQUIREMENTS OF THE STATE OF CALIFORNIA DIVISION OF INDUSTRIAL SAFETY AND OF CAL-OSHA.

10. CONTRACTOR SHALL FURNISH, INSTALL, AND MAINTAIN SUCH SHEETING, SHORING, BRACING, AND/OR OTHER PROTECTION AS IS NECESSARY TO PREVENT FAILURE OF TEMPORARY EXCAVATIONS AND EMBANKMENTS AND TO PREVENT DAMAGE TO EXISTING IMPROVEMENTS, TEMPORARY IMPROVEMENTS, AND PARTIALLY COMPLETED PORTIONS OF THE WORK. CONTRACTOR SHALL BE SOLELY RESPONSIBLE FOR THE SUFFICIENCY OF SUCH SUPPORTS AND/OR OTHER PROTECTION.

11. GEOTECHNICAL REPORTS INDICATE THAT GROUNDWATER MAY BE ENCOUNTERED NEAR THE GROUND SURFACE. CONTRACTOR SHALL INSTALL DOWELING SYSTEMS AS REQUIRED AND AS APPROVED BY THE GEOTECHNICAL ENGINEER TO LOWER THE WATER LEVEL TO A MINIMUM OF 1.5 FEET BELOW THE BOTTOM OF EXCAVATIONS FOR ALL IMPROVEMENTS CONSTRUCTED FOR THIS PROJECT.

12. CONTRACTOR SHALL REVIEW THE GEOTECHNICAL REPORT(S) AND THE PROJECT WORK AREA AND VICINITY AND SHALL BECOME FAMILIAR WITH THE WORK AREA CONDITIONS.

CONTRACTOR SHALL MAKE HIS OWN DEDUCTIONS AND CONCLUSIONS AS TO HOW EXISTING SURFACE AND SUB-SURFACE CONDITIONS WILL AFFECT OR BE AFFECTED BY CONSTRUCTION OPERATIONS, INCLUDING THE NATURE OF MATERIALS TO BE EXCAVATED, THE DEGREE OF DIFFICULTY ASSOCIATED WITH MAKING AND MAINTAINING THE REQUIRED EXCAVATIONS, AND THE DEGREE OF DIFFICULTY WHICH MAY ARISE FROM SUBSURFACE CONDITIONS INCLUDING GROUNDWATER, AND SHALL ACCEPT FULL RESPONSIBILITY T THEREOF.

ANY ADJUSTMENTS OR REVISIONS TO THESE PLANS DEEMED NECESSARY BECAUSE OF THE LOCATION AND/OR DEPTH OF EXISTING STRUCTURES OR CONDUITS SHALL BE APPROVED IN WRITING BY THE ENGINEER AND THE RELATED GOVERNMENT ENTITY OR UTILITY COMPANY PRIOR TO PROCEEDING WITH CONSTRUCTION.

13. IT IS CONTRACTOR'S RESPONSIBILITY TO PROTECT THE INTEGRITY OF EXISTING PAVEMENT ALONG AND BEHIND THE TRENCH SAWCUT LINES DURING CONSTRUCTION; IF THIS PAVEMENT IS BROKEN-OFF OR OTHERWISE DAMAGED BEFORE NEW PAVEMENT IS PLACED, CONTRACTOR SHALL SAWCUT A NEW CONFORM LINE PARALLEL WITH FULL LENGTH OF, AND SUFFICIENT DISTANCE (1-FOOT MINIMUM) BEHIND ORIGINAL SAWCUT SO AS TO REMOVE DAMAGED PAVEMENT AND / OR IRREGULARITY ALONG THE CONFORM LINE.

PUBLIC STREET NOTES:

1. ALL PUBLIC STREET AND RELATED FRONTAGE IMPROVEMENT MATERIALS AND CONSTRUCTION SHALL BE IN ACCORDANCE WITH THESE PLANS AND REFERENCED STANDARD SPECIFICATIONS AND WITH THE PROJECT-SPECIFIC AND STANDARD REQUIREMENTS OF THE COUNTY PUBLIC WORKS DEPARTMENT, INCLUDING TRANSPORTATION DIVISION STANDARD DETAILS, SEPTEMBER 2011 UPDATE, WHICH INCLUDE BY REFERENCE THE CURRENT VERSIONS OF STANDARD SPECIFICATIONS AND STANDARD PLANS OF THE CALIFORNIA DEPARTMENT OF TRANSPORTATION (CALTRANS), AND WHERE REFERENCED STANDARD PLANS AND STANDARD SPECIFICATIONS FOR PUBLIC WORKS CONSTRUCTION ("GREENBOOK," 2015 EDITION).
2. THE COMPOSITION OF ALL CUTBACK AND EMULSIFIED ASPHALT USED IN THE MANUFACTURE, PLACEMENT OR MAINTENANCE OF ASPHALT CONCRETE PAVEMENT SHALL CONFORM WITH COUNTY OF SANTA BARBARA AIR POLLUTION CONTROL DISTRICT RULE 329. CONTRACTOR SHALL MAINTAIN RECORDS AVAILABLE FOR INSPECTION FOR A PERIOD OF 2 YEARS WHICH DOCUMENT THE TYPES AND AMOUNTS OF ASPHALTS USED.

3. PAVEMENT STRUCTURAL SECTIONS SHOWN ON THESE PLANS ARE PRELIMINARY ESTIMATES.

ACTUAL THICKNESS OF PAVEMENT SURFACING AND BASE COURSES SHALL BE DETERMINED BY THE GEOTECHNICAL ENGINEER AFTER COMPLETION OF ROUGH GRADING, BASED ON "R" VALUE TESTS OF COMPLETED SUBGRADE MATERIAL AND THE TRAFFIC INDEXES (T.I.'S) SHOWN ON THE PLAN DETAILS, SUBJECT TO APPROVAL BY THE COUNTY PUBLIC WORKS DEPARTMENT. ADDITIONAL GRADING MAY BE NECESSARY TO ADJUST SUBGRADE ELEVATIONS TO ACCOMMODATE THE FINAL STRUCTURAL THICKNESS.

STRUCTURAL SECTION SHALL NOT BE LESS THAN THAT REQUIRED BY THE STANDARD DETAILS.

4. BEFORE PAVING A PAVEMENT BINDER (TACK COAT) OF ASPHALTIC EMULSION SHALL BE APPLIED TO ALL EXISTING VERTICAL SURFACES AGAINST WHICH PAVING IS TO BE PLACED AND BETWEEN PAVEMENT COURSES CONSTRUCTED MORE THAN 24 HOURS APART.

5. ASPHALT CONCRETE SHALL BE IN CONFORMANCE WITH SECTION 203-6. OF THE GREENBOOK STANDARD SPECIFICATIONS AS APPLICABLE. ASPHALT SHALL BE FOR A SINGLE LAYING COURSE UP TO A COMPACTED THICKNESS NOT EXCEEDING 0.25-FOOT.

IF TOTAL ASPHALT CONCRETE THICKNESS IS GREATER THAN 0.20-FOOT (2 1/2 INCHES), IT SHALL BE SPREAD AND COMPACTED IN AT LEAST TWO (2) LAYERS WITH THE TOP LAYER (FINISH COURSE) NOT EXCEEDING 0.20-FOOT IN COMPACTED THICKNESS AS FOLLOWS:

FINISH COURSE: C2-PG 64-10

BASE COURSE: (IF MORE THAN 1 LAYER) B-PG 64-10

OVERLAY: C2-PG 64-10

LEVELING COURSE AND SKIN PATCHING: D2-PG 64-10

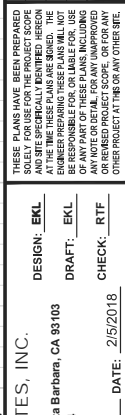
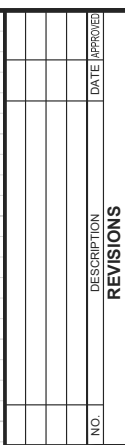
PAVING ASPHALT SHALL BE GRADE PG 64-10 IN CONFORMANCE WITH SECTION 203-1 OF THE GREENBOOK STANDARD SPECIFICATIONS. THE PAVING ASPHALT MIXTURE SHALL CONTAIN A MAXIMUM OF 10% RECLAIMED ASPHALT PAVEMENT (RAP).

6. PREPARATION OF STREET SUBGRADE INCLUDING REMOVAL AND RECOMPACT OF EXISTING SOIL AND PLACEMENT OF FILL SOIL SHALL BE AS RECOMMENDED BY THE GEOTECHNICAL ENGINEER.

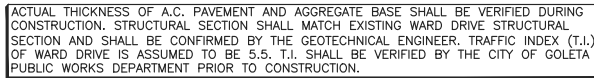
7. COMPACTION OF ROADWAY FILL, SUBGRADE AND BASE COURSES AS WELL AS ALL TRENCH BEDDING AND BACKFILL SHALL BE OBSERVED AND TESTED FOR COMPLIANCE WITH APPLICABLE REQUIREMENTS BY THE GEOTECHNICAL ENGINEER.

8. ALL WORK INVOLVING EXCAVATION INCLUDING THAT FOR WATER, SEWER, STORM DRAIN AND UTILITY CONDUITS AND ALL SERVICE CONNECTIONS AND METER BOXES (NOT PERMITTED IN DRIVEWAYS) SHALL BE COMPLETED AND OBSERVED AND APPROVED BY THE AGENCY HAVING JURISDICTION AND THE STRUCTURAL BACKFILL OBSERVED AND TESTED FOR COMPACTION AND APPROVED BEFORE AGGREG





6



The image contains two technical drawings of curb profiles. The left drawing, labeled 'TYPE A1 CURB', shows a cross-section of a curb with a total width of 7 inches (6 inches for the main body and 1 inch for the top flange). The height is 16 inches, divided into a 6-inch top section and a 10-inch bottom section. It is labeled 'TC PER PLAN' and 'FS PER PLAN'. The right drawing, labeled '0° CONCRETE CURB', shows a cross-section of a curb with a total width of 6 inches and a height of 12 inches. It is labeled 'CURB LINE'.

- ALL CONCRETE TO BE CLASS 560-C-3250
- PER COUNTY OF SANTA BARBARA DEPARTMENT OF PUBLIC WORKS STANDARD DETAILS 4-030 EXCEPT AS MODIFIED ABOVE.
- CONSTRUCT JOINTS PER SPECIFICATIONS AND AS SHOWN ON PLANS.
- CONSTRUCT  $\frac{1}{2}$ " RADIUS ROUNDOING ON ALL EXPOSED CORNERS.
- 2. 4" DEEP CONCRETE BASE AND SUBGRADE MATERIAL BENEATH CURB SHALL BE COMPACTED PER COUNTY OF SANTA BARBARA DEPARTMENT OF PUBLIC WORKS STANDARD DETAIL 3-100.
- INSTALL EXPANSION JOINTS AT 30' INTERVALS. CONSTRUCT WEAKENED-PLANE JOINTS AT 10' INTERVALS. JOINTS SHALL ALSO ALIGN WITH THOSE IN ADJACENT CONCRETE-PAVEMENT & SIDEWALK.

**PROFILE**

10.0'

S=36"

10.0'

BEGIN LOCAL DEPRESSION

END LOCAL DEPRESSION

TO GRADE LINE AS SHOWN ON PROFILE

**SECTION A-A**

LIP OF GUTTER

FL OF GUTTER

3" MIN.

GALVANIZED STEEL ANGLE

SIDEWALK

2.0%

RW

FL PER PLAN

8"

6"

**NOTES:**

1. PARKWAY SPW MODIFIED
2. INLET THE ROADWARD
3. PARKWAY THE STREET PROPOSED PARKWAY AS SHOWN

**RECORD DRAWING DISCLAIMER**

THESE CONSTRUCTION DOCUMENTS HAVE BEEN REVISED TO CREATE "RECORD DRAWINGS" BASED ON INFORMATION PROVIDED BY LAST CONSTRUCTION TO REFLECT THE CONTRACTOR'S REPRESENTATIONS OF THE WORK AS CONSTRUCTED. NEITHER THE CITY OF GOLETA NOR THE ENGINEER HAS VERIFIED THE ACCURACY AND / OR COMPLETENESS OF THIS INFORMATION AND SHALL NOT BE RESPONSIBLE FOR ANY ERROR AND / OR OMISSION WHICH MAY BE INCORPORATED INTO THESE DRAWINGS. PERSONS USING THESE DRAWINGS SHOULD OBTAIN ANY NECESSARY DEPENDENT FIELD INVESTIGATIONS TO CONFIRM LOCATIONS OF UNDERGROUND FACILITIES PRIOR TO EXCAVATION IN AREAS COVERED BY THESE DRAWINGS.

RECORD DRAWING DATE: 12/10/18

- NOTES:**
1. PARKWAY DRAIN SHALL BE INSTALLED PER SPPWC STD. PLAN 151-2. S=36", B=3" AND MODIFIED AS SHOWN HEREON.
  2. INLET TYPE 2 SHALL BE MODIFIED TO DRAIN IN THE REVERSE DIRECTION. INTO 749 OR 759 WARD DRIVE PROPERTY.
  3. PARKWAY DRAIN SHALL EXTEND TO BACK OF THE SIDEWALK AND LOCATED WITHIN THE PROPOSED RIGHT-OF-WAY. DO NOT EXTEND THE PARKWAY DRAIN 24" BEYOND THE RIGHT-OF-WAY AS SHOWN IN SPPWC STD. PLAN 151-2.

AS-BUILT SIDEWALK TRANSITION MODIFICATIONS	DATE	VIEW
<p>THESE PLANS HAVE BEEN PREPARED FOR THE USE OF THE ENGINEER, ARCHITECT AND SITE SPECIFICALLY IDENTIFIED PERSONS AT THE TIME THESE PLANS ARE ISSUED. THE ENGINEER, ARCHITECT AND ANY OTHER PERSONS BE RESPONSIBLE FOR OR LIABLE FOR THE USE OF ANY PART OF THESE PLANS INCLUDING FOR ANY AND ALL CONSTRUCTION OF ANY PROJECT AT THE SITE OR ANY OTHER SITE.</p>	10/10/18	
NO.	DESCRIPTION	DATE APPROVED
<p><b>REVISIONS</b></p>		



Plan view of a proposed drainage system. The plan shows a 12' x 12' manhole (M) with a proposed right-of-way (R/W) and existing right-of-way (EX. R/W). The manhole is located at the intersection of a proposed drainage path and an existing road. The plan includes elevations for top of floor (TC/F), top of curb (TC/F), and top of finish (TC/F) for various structures and the manhole. It also shows the proposed drainage path, manhole location, and existing road layout.

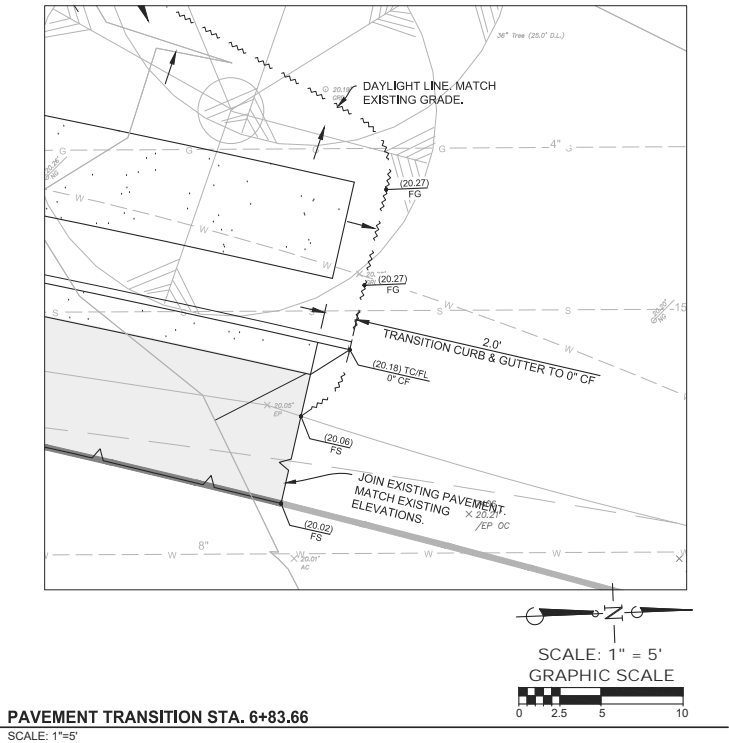
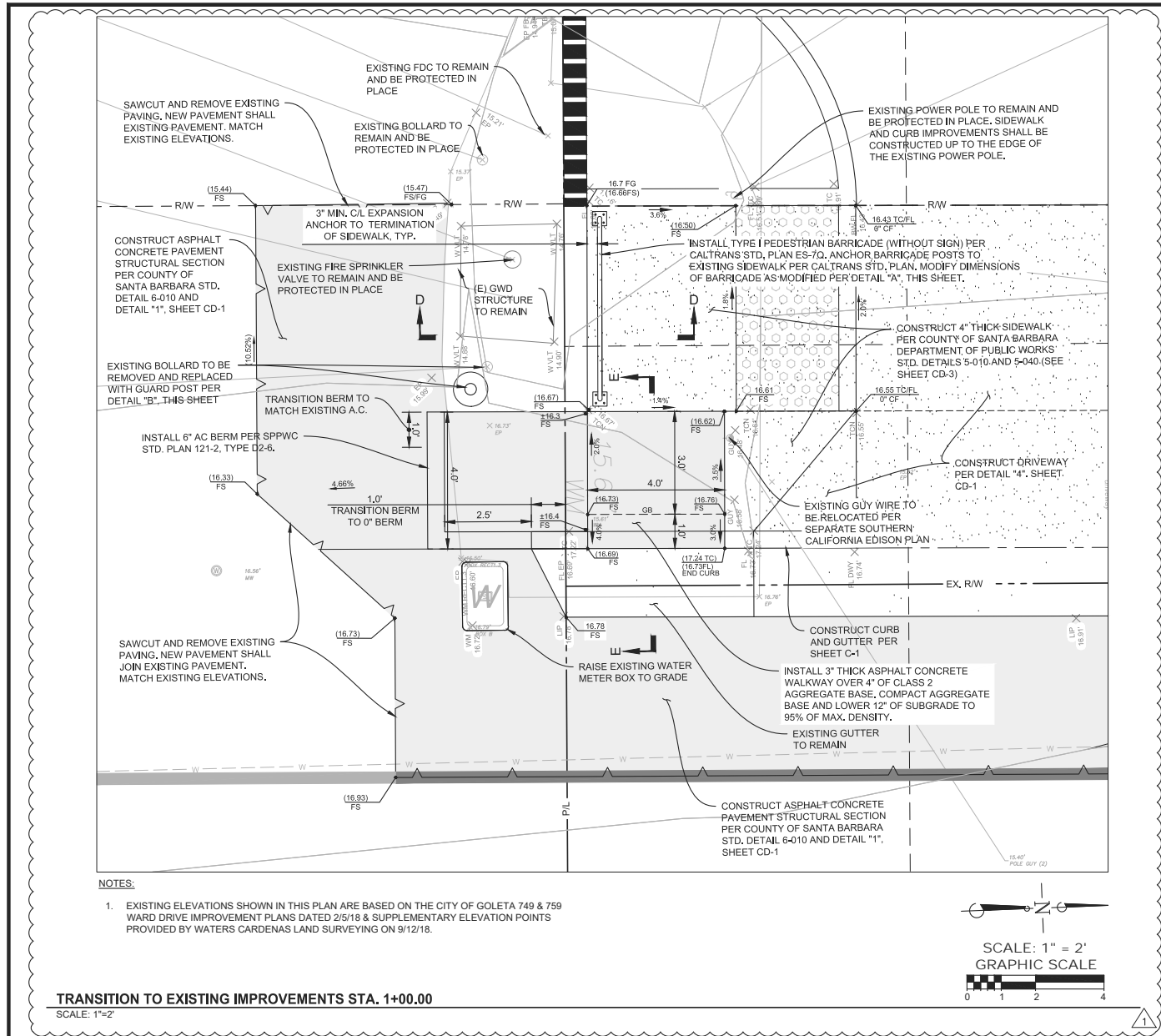
Key features and elevations:

- Manhole (M): 12' x 12' (17.88) FS
- Proposed R/W: 12' x 12' (17.88) FS
- Existing R/W: 12' x 12' (17.82) FS
- Proposed drainage path: 12' x 12' (17.88) FS
- Existing road: 12' x 12' (17.82) FS
- Proposed drainage path: 12' x 12' (17.88) FS
- Existing road: 12' x 12' (17.82) FS

SCALE: 1" = 5'  
GRAPHIC SCALE

SIGNATURE \_\_\_\_\_ DATE \_\_\_\_\_

K:\CADD\DWG\1554\DWG\1554\_STREET PLANS\_C.dwg, 12/10/2018 12:17:45 PM, K5:scot



RECORD DRAWING DISCLAIMER

THESE CONSTRUCTION DOCUMENTS HAVE BEEN REVISED TO CREATE "RECORD DRAWINGS" BASED ON INFORMATION PROVIDED BY LASH CONSTRUCTION TO REFLECT THE CONTRACTORS' REPRESENTATIONS OF THE WORK AS CONSTRUCTED. NEITHER THE CITY OF GOLETA NOR THE ENGINEER HAS VERIFIED THE ACCURACY AND / OR COMPLETENESS OF THIS INFORMATION AND SHALL NOT BE RESPONSIBLE FOR ANY ERROR AND / OR OMISSION WHICH MAY BE INCORPORATED INTO THESE DRAWINGS. PERSONS USING THESE DRAWINGS SHOULD MAKE THEIR OWN INDEPENDENT FIELD INVESTIGATIONS TO CONFIRM LOCATIONS OF UNDERGROUND FACILITIES PRIOR TO EXCAVATION IN AREAS COVERED BY THESE DRAWINGS.

RECORD DRAWING DATE: 12/10/18

NO.	DESCRIPTION	DATE	APPROVED
1	AS-BUILT SIDEWALK TRANSITION MODIFICATIONS	12/10/18	VIEW

THESE PLANS HAVE BEEN PREPARED SOLELY FOR USE FOR THE PROJECT SCOPE AND AT THE TIME THESE PLANS WERE SIGNED. THE ENGINEER HAS NOT CONDUCTED FIELD VERIFICATION OF ANY PART OF THESE PLANS, INCLUDING EXISTING CONDITIONS, AND THEREFORE CANNOT BE RESPONSIBLE FOR ANY OTHER SITE.

DESIGN: EKL  
DRAFT: EKL  
CHECK: RTF

DATE: 2/5/2018

BY: Robert Y. Flowers

FLOWERS & ASSOCIATES, INC.  
CIVIL ENGINEERS  
201 N. Calle Cesar Chavez, Suite 100, Santa Barbara, CA 93103  
Telephone (805) 966-2224

REGISTERED PROFESSIONAL ENGINEER  
ROBERT Y. FLOWERS  
No. 18324  
Exp. 6-30-19  
CIVIL  
STATE OF CALIFORNIA

DETAILS

STREET IMPROVEMENT PLANS

749 & 759 WARD DRIVE

CITY OF GOLETA, CALIFORNIA

JANUARY 17, 2018

CD-2

SHT. 5 OF 6

W.O. 1554



(REFER TO 5-010 FOR ADDITIONAL NOTES)

1. CONCRETE FOR SIDEWALKS AND CURB RAMPS SHALL BE CALTRANS CLASS 3 OR BETTER WITH 25% FLY-ASH IN THE MIX DESIGN. WHEN CONCRETE IS ALSO BEING USED FOR DRIVEWAYS AND GUTTERS, IT SHALL BE CLASS 2 OR BETTER.

2. THICKNESS OF SIDEWALKS SHALL BE 4" MINIMUM, AND THE TRANSVERSE SLOPE SHALL BE 2% MAX. DRAINING TOWARD THE CURB. MINIMUM WIDTH SHALL BE 4'; REFER TO TABLES IN 5-040.

3. SUBGRADE MATERIAL SHALL BE COMPACTED TO 90% OF MAXIMUM DENSITY FOR A 0.50' DEPTH. IN EXPANSIVE SOILS AND SOILS WHICH CANNOT REACH 90% RELATIVE COMPACTION, A 0.35' LAYER OF CALTRANS CLASS 4 BASE OR BETTER SHALL BE PLACED AND COMPACTED TO 90% RELATIVE COMPACTION.

4. ADA COMPATIBLE SLOPES, DETECTABLE WARNING SURFACES, AND GROOVED BORDERS AT GRADE BREAKS SHALL BE PROVIDED WHERE REQUIRED BY ALL CURRENT REGULATIONS.

5. EXPANSION JOINTS SHALL BE MADE WITH 1/2" EXPANSION PAPER AND PLACED AT THE BEGINNING AND END OF EACH CURB RETURN, ON EACH SIDE OF DRAINAGE STRUCTURES SUCH AS DRAIN INLETS, AT UTILITY VAULTS AND POLES, EVERY 200' OF LENGTH, AND AT OTHER PLACES AS DIRECTED BY THE COUNTY ENGINEER.

6. WEAKENED-PLANE JOINTS SHALL BE TOOLED 1-1/2" DEEP IN SIDEWALKS, CURBS AND GUTTERS AT INTERVALS OF NO MORE THAN 10', AND AT BOTH SIDES OF METER BOXES AND PULL BOXES. JOINTS IN ADJACENT CURBS AND SIDEWALKS SHALL BE ALIGNED.

7. SCORELINE'S SHALL BE TOOLED 1/4" DEEP ON SIDEWALKS MIDWAY BETWEEN WEAKENED-PLANE JOINTS. ON CURB RETURNS, THEY SHALL BE PLACED SO AS TO CONTINUE THE CURB LINE THROUGH THE RAMP.

8. UTILITY BOXES AND VAULTS SHALL NOT BE LOCATED IN SIDEWALKS WHERE POSSIBLE. THERE SHALL BE A MINIMUM OF 4' SIDEWALK CLEARANCE AROUND ANY SIGNS, POLES, OR OTHER OBSTRUCTIONS.

COUNTY OF SANTA BARBARA, CA - DEPARTMENT OF PUBLIC WORKS - TRANSPORTATION

APPROVED BY:

5-010

GENERAL SIDEWALK NOTES

REVISION DATES

DIRECTOR OF PUBLIC WORKS

DATE

NOTES (REFER TO 5-010 FOR ADDITIONAL NOTES)

1. THE WIDTH OF THE SIDEWALKS (NOT INCLUDING THE CURB) SHALL BE AS SHOWN IN TABLE A OR B. SIDEWALKS FRONTING COMMERCIAL DEVELOPMENTS SHALL EXTEND FROM THE BACK OF THE CURB TO 6' FROM THE RIGHT-OF-WAY LINE.

2. TRANSVERSE EXPANSION JOINTS SHOULD CONTINUE THROUGH THE ADJACENT CURB AND GUTTER.

3. WEAKENED-PLANE JOINTS SHALL BE PROVIDED AT INTERVALS OF NOT MORE THAN 10' ON SIDEWALKS AND CURB/GUTTERS WHERE SIDEWALKS ADJUT THE CURB. THE WEAKENED-PLANE JOINT SHALL BE CONTINUOUS THROUGH BOTH.

4. A SCORELINE SHALL BE PLACED MIDWAY BETWEEN WEAKENED-PLANE JOINTS. WHERE THE SIDEWALK WIDTH EXCEEDS 6', A LONGITUDINAL SCORELINE SHALL BE TOOLED AT THE SIDEWALK CENTERLINE.

5. ADDITIONAL SIDEWALK WIDTH MAY BE NEEDED TO MAINTAIN A MINIMUM OF 4' CLEAR SIDEWALK AROUND EXISTING OBSTRUCTIONS SUCH AS UTILITY POLES.

PLAN A - SIDEWALK WITHOUT PARKWAY

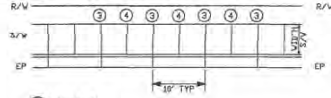


TABLE A

R/W WIDTH	STD. DTL.	MINIMUM WIDTH	COMMERCIAL WIDTH	WIDTH	STANDARD CY/LF	NONLITHIC CY/LF
MAJOR	6'-0" TO 6'-6"	6'	9.5'	9.5'	0.116	0.124
60'	6'-0" TO 6'-6"	6'	9.5'	6'	0.075	0.082
50'	6'-0" TO 6'-6"	6'	9.5'	5'	0.061	0.065
RURAL	6'-0" TO 6'-6"	4'	9.5'	4'	0.049	0.052

PLAN B - SIDEWALK WITH PARKWAY

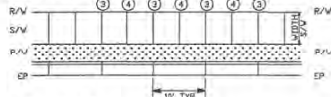


TABLE B

R/W WIDTH	STD. DTL.	MINIMUM WIDTH	COMMERCIAL WIDTH	WIDTH	STANDARD CY/LF
MAJOR	6'-0" TO 6'-6"	6'	9.5'	9.5'	0.116
60'	6'-0" TO 6'-6"	6'	9.5'	6'	0.075
50'	6'-0" TO 6'-6"	6'	9.5'	5'	0.061
RURAL	6'-0" TO 6'-6"	4'	9.5'	4'	0.049

COUNTY OF SANTA BARBARA, CA - DEPARTMENT OF PUBLIC WORKS - TRANSPORTATION

APPROVED BY:

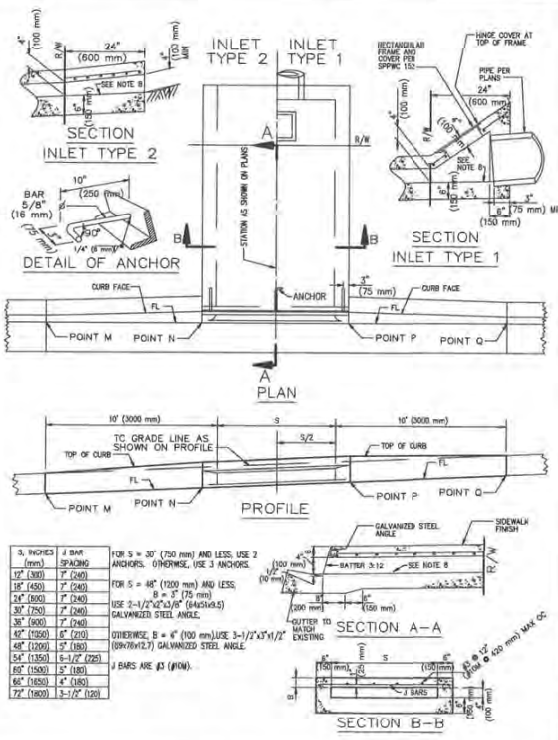
5-040

SIDEWALK DETAILS

REVISION DATES

DIRECTOR OF PUBLIC WORKS

DATE



PARKWAY DRAIN		STANDARD PLAN
151-2		SHEET 1 OF 2

NOTES

- FLOOR OF BOX SHALL BE TROWELED SMOOTH.
- IF THE TOE OF SLOPE IS ALLOWED WITHIN THE R/W, INLET TYPE 1 BEGINS AT THE TOE RATHER THAN AT THE R/W LINE.
- FOR OPEN DITCH (TYPE 2), THE 24" (600 mm) EXTENSION BEYOND THE R/W LINE IS NOT REQUIRED WHEN BACK OF WALK IS 24" (600 mm) OR MORE FROM THE R/W LINE; HOWEVER, THE PIPE SHALL EXTEND TO THE R/W LINE IN ANY EVENT.
- TOP OF INLET STRUCTURE (TYPE 1 & 2) SHALL BE FLUSH WITH ADJACENT SURFACE WHERE PRACTICAL.
- A HEADED STEEL STUD 5/8" x 6-3/8" WITH A 1" HEAD (16 x 160 mm, 25 mm HEAD) ATTACHED BY A FULL PENETRATION BUTT WELD MAY BE USED AS AN ALTERNATE ANCHOR.
- NORMAL CURB FACE AT POINT M AND Q. CURB FACE IS B + 5" (125 mm) AT POINT N AND P.
- THE 3" (75 mm) LEG OF THE 5/8" (16 mm) DIA ANCHORS SHALL BE PARALLEL TO THE TOP OF SIDEWALK.
- SLOPE = 2.0%.

STANDARD PLANS FOR PUBLIC WORKS CONSTRUCTION

PARKWAY DRAIN

STANDARD PLAN

151-2

SHEET 2 OF 2

RECORD DRAWING DISCLAIMER

THESE CONSTRUCTION DOCUMENTS HAVE BEEN REVISED TO CREATE "RECORD DRAWINGS" BASED ON INFORMATION PROVIDED BY LASH CONSTRUCTION TO REFLECT THE CONTRACTORS' REPRESENTATIONS OF THE WORK AS CONSTRUCTED. NEITHER THE CITY OF GOLETA NOR THE ENGINEER HAS VERIFIED THE ACCURACY AND / OR COMPLETENESS OF THIS INFORMATION AND SHALL NOT BE RESPONSIBLE FOR ANY ERROR AND / OR OMISSION WHICH MAY BE INCORPORATED INTO THESE DRAWINGS. PERSONS USING THESE DRAWINGS SHOULD MAKE THEIR OWN INDEPENDENT FIELD INVESTIGATIONS TO CONFIRM LOCATIONS OF UNDERGROUND FACILITIES PRIOR TO EXCAVATION IN AREAS COVERED BY THESE DRAWINGS.

RECORD DRAWING DATE: 12/10/18

CITY OF GOLETA, CA

REVIEWED BY:

SIGNATURE

DATE

DETAILS

STREET IMPROVEMENT PLANS  
749 & 759 WARD DRIVE  
CITY OF GOLETA, CALIFORNIA

JANUARY 17, 2018

CD-3

SHT. 6 OF 6

W.O. 1554

## **Attachment 2**

### **A Resolution of the City Council of the City Goleta, California Authorizing the Filing of a Notice of Completion for Street Improvements at 749/759 Ward Drive**



**RESOLUTION NO. 19 - \_\_\_\_**

**A RESOLUTION OF THE CITY COUNCIL OF THE CITY OF  
GOLETA, CALIFORNIA, AUTHORIZING THE FILING OF A  
NOTICE OF COMPLETION FOR STREET IMPROVEMENTS AT  
749/759 WARD DRIVE**

**WHEREAS**, on March 20, 2018, the City of Goleta authorized the Subdivision Improvement Agreement between the City of Goleta and the Mark Family Trust, Santa Barbara Rentals, Limited Partnership, an Arizona Limited Partnership and The Marcus S. Metzler, Jr. Living Trust; and

**WHEREAS**, the City Engineer has evaluated the work and has determined that the work was satisfactorily completed in accordance with the Subdivision Improvement Agreement and City Standards; and

**WHEREAS**, the City Engineer recommends the filing of a Notice of Completion pursuant to Government Code section 20854.

**NOW, THEREFORE, BE IT RESOLVED BY THE CITY COUNCIL OF THE  
CITY OF GOLETA AS FOLLOWS:**

**SECTION 1.**

The work required to be performed by said Contractor has been completed.

**SECTION 2.**

The work is hereby accepted and approved based on the recommendation of the City Engineer.

**SECTION 3.**

Public Works Director and City Clerk are directed to release securities posted for the completion of the project as required by the Subdivision Improvement Agreement.

**SECTION 4.**

The City Clerk is directed to forthwith forward a Notice of Completion to the Recorder of the County of Santa Barbara for recording.

**SECTION 5.**

The City Clerk shall certify to the passage and adoption of this resolution and enter it into the book of original resolutions.

**PASSED, APPROVED, AND ADOPTED** this 7<sup>th</sup> day of May, 2019.

\_\_\_\_\_  
PAULA PEROTTE  
MAYOR

ATTEST:

APPROVED AS TO FORM:

\_\_\_\_\_  
DEBORAH S. LOPEZ  
CITY CLERK

\_\_\_\_\_  
MICHAEL JENKINS  
CITY ATTORNEY

STATE OF CALIFORNIA                    )  
COUNTY OF SANTA BARBARA        )  
CITY OF GOLETA                        )       ss.

I, DEBORAH S. LOPEZ, City Clerk of the City of Goleta, California, DO  
HEREBY CERTIFY that the foregoing Resolution No. 19-\_\_\_ was duly adopted by  
the City Council of the City of Goleta at a regular meeting held on the 7<sup>th</sup> day of  
May, 2019, by the following vote of the Council:

AYES:

NOES:

ABSENT:

(SEAL)

\_\_\_\_\_  
DEBORAH S. LOPEZ  
CITY CLERK





**Attachment 3**  
**Notice of Completion**



RECORDING REQUESTED BY:  
WHEN RECORDED RETURN TO:

City of Goleta  
130 Cremona Drive, Suite B  
Goleta, CA 93117  
ATTN: CITY CLERK

---

SPACE ABOVE THIS LINE FOR RECORDER'S USE

Exempt from recording fee, per Government Code  
Section 27383

CITY OF GOLETA, CALIFORNIA

By: Deborah S. Lopez  
City Clerk

### NOTICE OF COMPLETION

NOTICE IS HEREBY GIVEN that a Subdivision Improvement Agreement was entered into by the City of Goleta, California and the Mark Family Trust, Santa Barbara Rentals, Limited Partnership, an Arizona Limited Partnership and The Marcus S. Metzler, Jr. Living Trust:

### **STREET IMPROVEMENTS AT 749/759 WARD DRIVE**

Said work was substantially completed on December 11, 2018, by said company; was completed in accordance with City standards and to the satisfaction of the City Engineer of the City of Goleta; and was accepted by the City Council of the City of Goleta, owner, at a regular meeting thereof held on the 7<sup>th</sup> day of May, 2019, by Resolution No. 19-\_\_.

DATED this 7<sup>th</sup> day of May, 2019, at Goleta, California.

I certify under PENALTY OF PERJURY under the laws of the State of California that the foregoing paragraph is true and correct.

---

DEBORAH S. LOPEZ,  
CITY CLERK

STATE OF CALIFORNIA            )  
COUNTY OF SANTA BARBARA    )       ss  
CITY OF GOLETA                 )

I, Deborah S. Lopez, City Clerk of the City of Goleta, California, do hereby certify that the foregoing Notice of Completion is true and correct, and that said Notice of Completion was duly and regularly ordered to be recorded in the Office of the Santa Barbara County Recorder by said City Council.

DATED this 7<sup>th</sup> day of May, 2019, at Goleta, California.

---

DEBORAH S. LOPEZ  
CITY CLERK