

# GENERAL PLAN CONFORMANCE FINDINGS FOR THE CAPITAL IMPROVEMENT PROGRAM FY 2019-2020

---

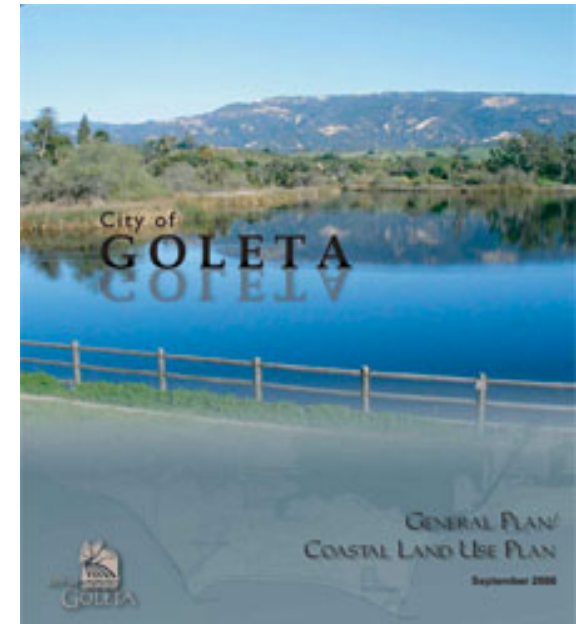
Planning Commission  
May 13, 2019

*Presentation by:*  
James Winslow, Senior Project Engineer,  
CIP Division



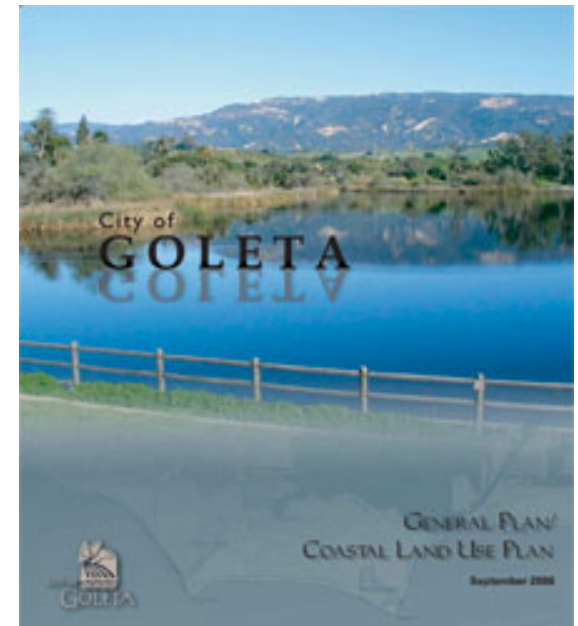
# General Plan & Capital Improvements FY 2019- 20

- The CIP is a budgeting and strategic planning tool used to assess the infrastructure needs of the community.
- Staff reviewed the FY 2019-2020 list of CIP projects and found them in conformance with General Plan.
- The CIP list is similar to Revised FY 2018/19 list.
  - Eight projects are added.
- The Commission is required (under Government Code Section 65401) to review the CIP for conformity with the General Plan.



# Purpose

- Adopt Resolution 19-\_\_\_\_ for FY 2019/20.

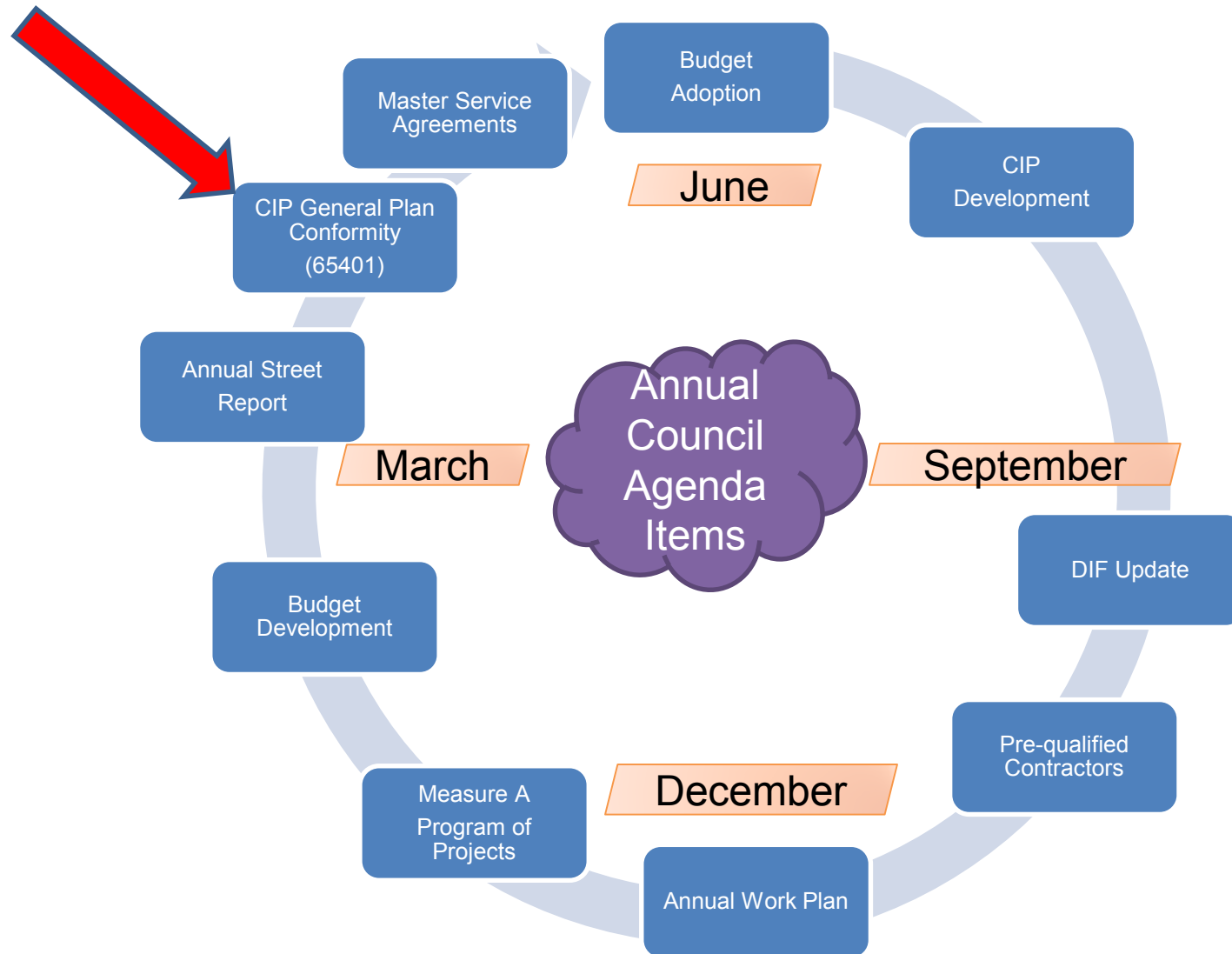


# Planning Commission Recommendation

Adopt Resolution No. 19-\_\_\_\_, entitled “A Resolution of the Planning Commission of the City of Goleta, California, Finding the Fiscal Year 2019-2020 Capital Improvement Program is in Conformance with the Goleta General Plan / Coastal Land Use Plan Pursuant to Section 65401 of the Government Code.”



# Annual CIP Items



# CIP PROJECTS - COMPLETED

---

# Old Town Park (Hollister/Kellogg Park)

## OS 6: Public Park System Plan





# Crosswalk at S. Kellogg Avenue

## TE 10: Pedestrian Circulation





# Fairview Ave. Sidewalk Infill



# CIP PROJECTS - DESIGN

---



CIP -65401.kmz

# Planning Commission Recommendation

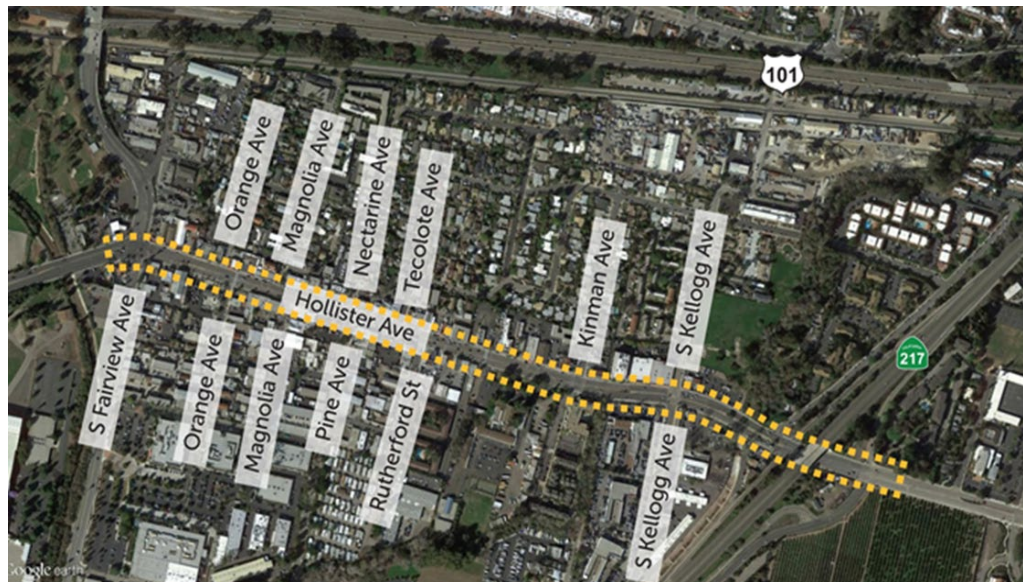
Adopt Resolution No. 19-\_\_\_\_, entitled “A Resolution of the Planning Commission of the City of Goleta, California, Finding the Fiscal Year 2019-2020 Capital Improvement Program is in Conformance with the Goleta General Plan / Coastal Land Use Plan Pursuant to Section 65401 of the Government Code.”

QUESTIONS ?



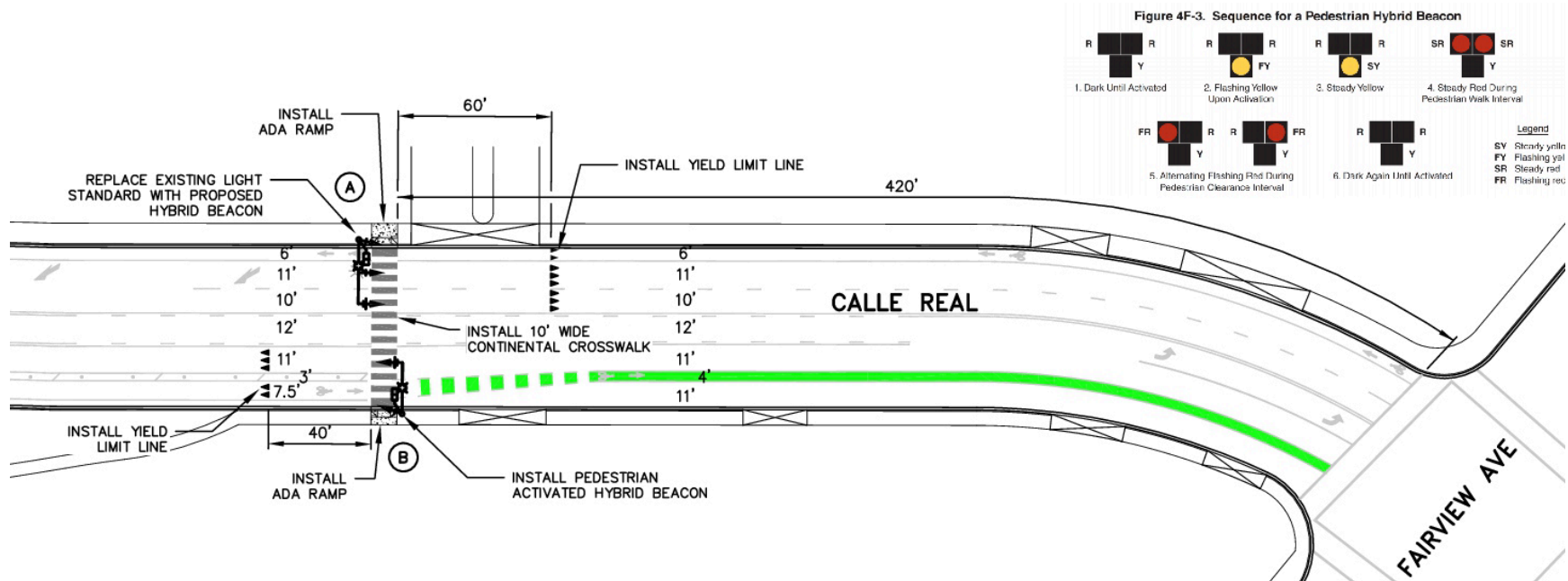
# Hollister Redesign Project (Complete Streets)

Figure 7-3; Table 7-4; TE 5.4: Hollister Ave Redesign Improvements



# Crosswalk Calle Real/Fairview

## TE 10: Pedestrian Circulation



PROPOSED POLE & EQUIPMENT SCHEDULE														
LOC	STANDARDS				LED LUMINAIRE	VEH. SIG. MTG.		PED. SIG. MOUNTING	PPB		POLE LOC.		REFLECTIVE S.N.S (DOUBLE FACED)	REMARKS
	TYPE	HEIGHT	SIG. M.A.	LUM. M.A.		M.A.	POLE		#	QUAD	STA.	OFFSET		
A	17-3-100	30'	25'	12'	154 W	2-MAS*	SV-1-T*	SP-1-T**	-	E	-	-	-	F= 12'
B	19-4-100	30'	20'	12'	154 W	1-MAS*	SV-1-T*	SP-1-T**	-	W	-	-	-	-

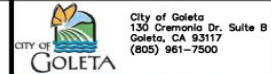
\* 3-SECTION PEDESTRIAN HYBRID BEACON

\*\* COUNT DOWN TYPE PEDESTRIAN SIGNAL



# San Jose Creek Bike Path – Middle/South

Figure 7-6: Bikeways Plan Map Planned Bikeway

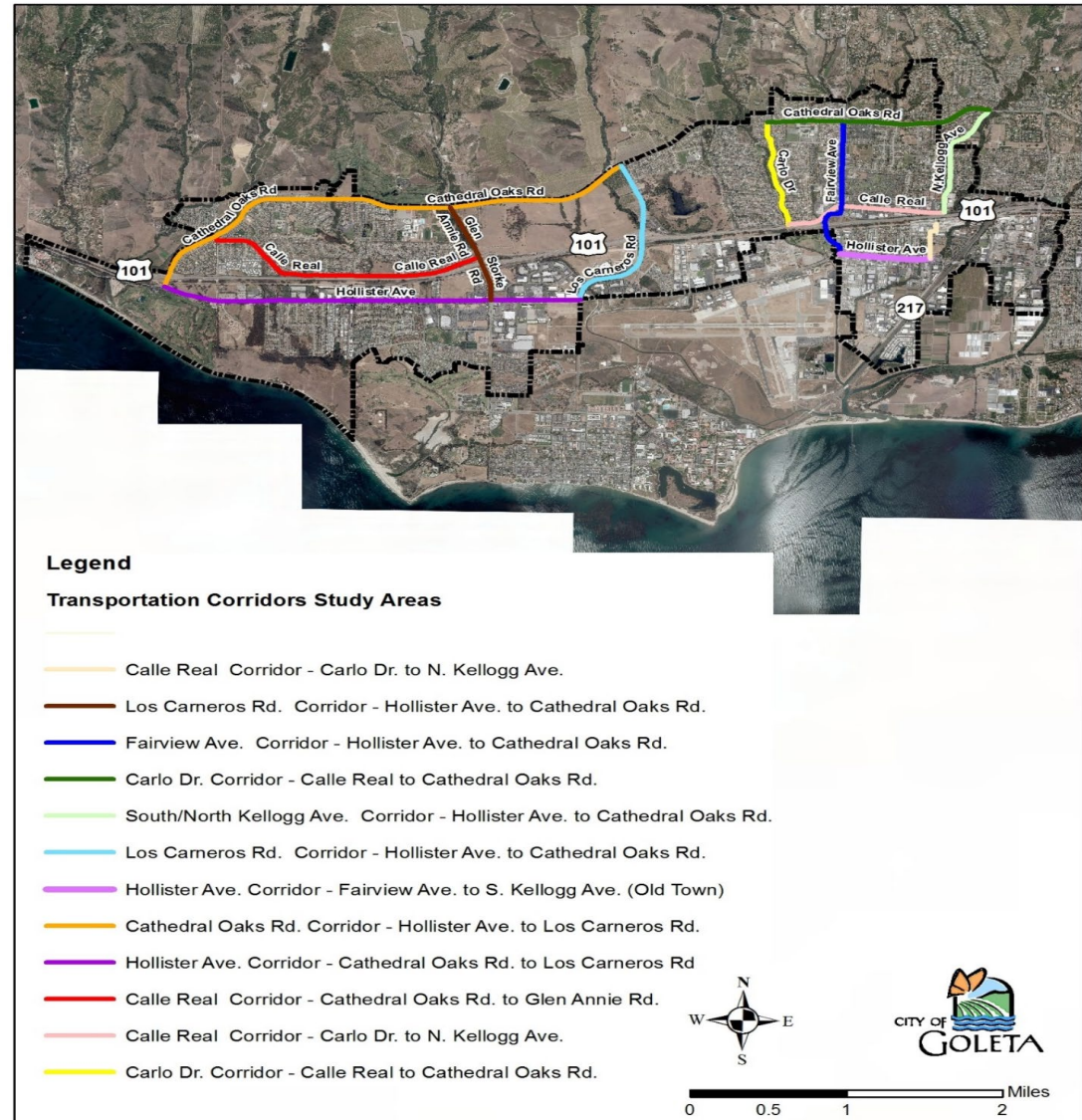


**San Jose Creek Bike Path  
Middle Extent**



# Goleta Traffic Safety Study

TE 1.1 Integrated Multi-Modal Transportation System  
 TE 1.3 Improved Connectivity in Street, Pedestrian, and Bikeway Systems  
 TE 1.4 Multi-Use Street System  
 TE 3.3 Major Arterials  
 TE 10.5: Pedestrian Safety  
 TE 11.5 Bicyclist Safety  
 TE 12.1 General



# Old Town Sidewalk Infill Project

Figure 7-5: Pedestrian System Plan;  
TE 10.5: Pedestrian Safety

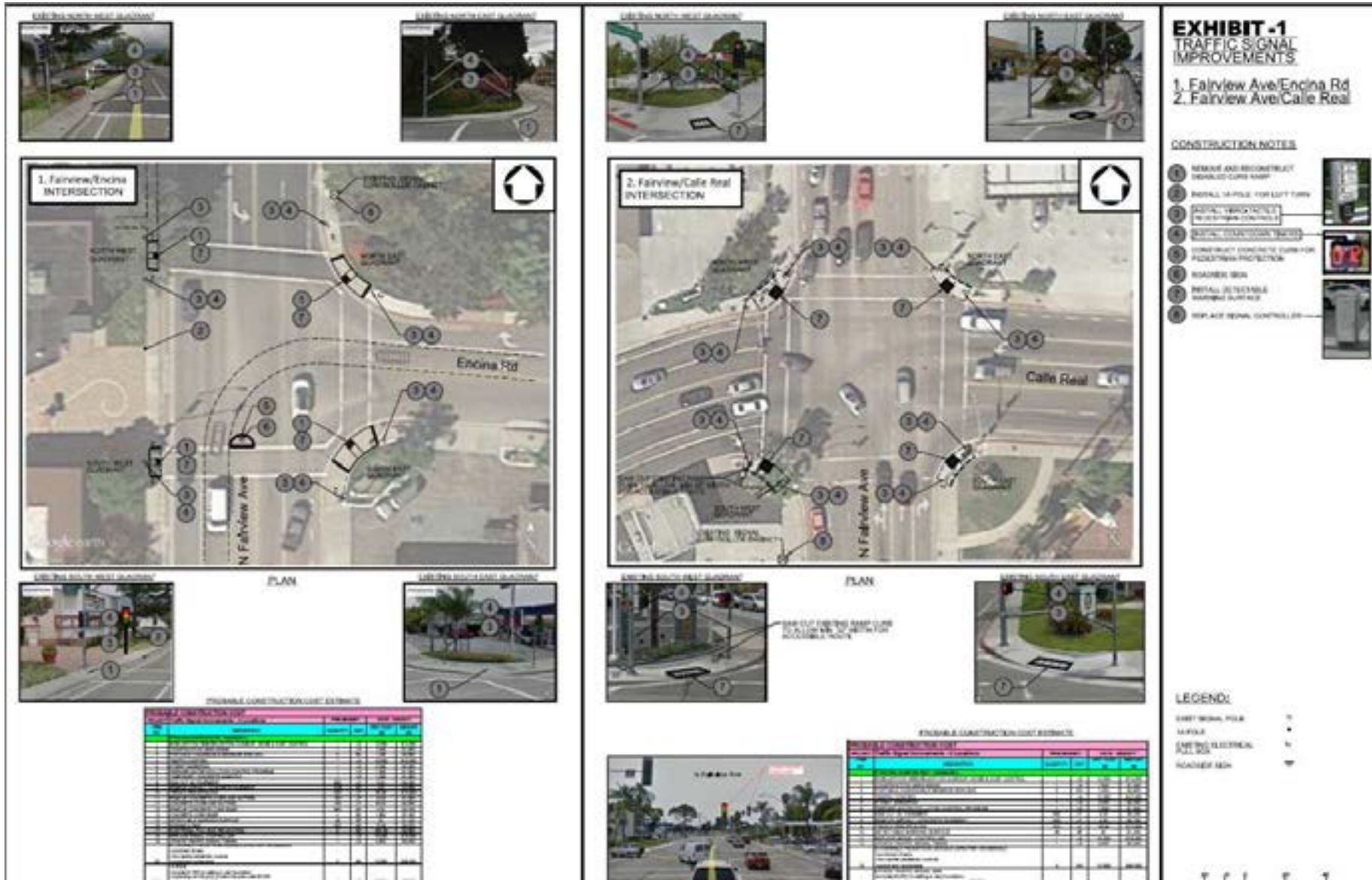


# PROJECTS IN ENGINEERING, DESIGN, OR PLANNING PHASE

---



# Citywide Evaluation of Existing Traffic Signals



# New 101 Overcrossing (Ellwood Station Rd.)

Figure 7-3; Table 7-4; TE 5.5: New US-101 Freeway Crossings





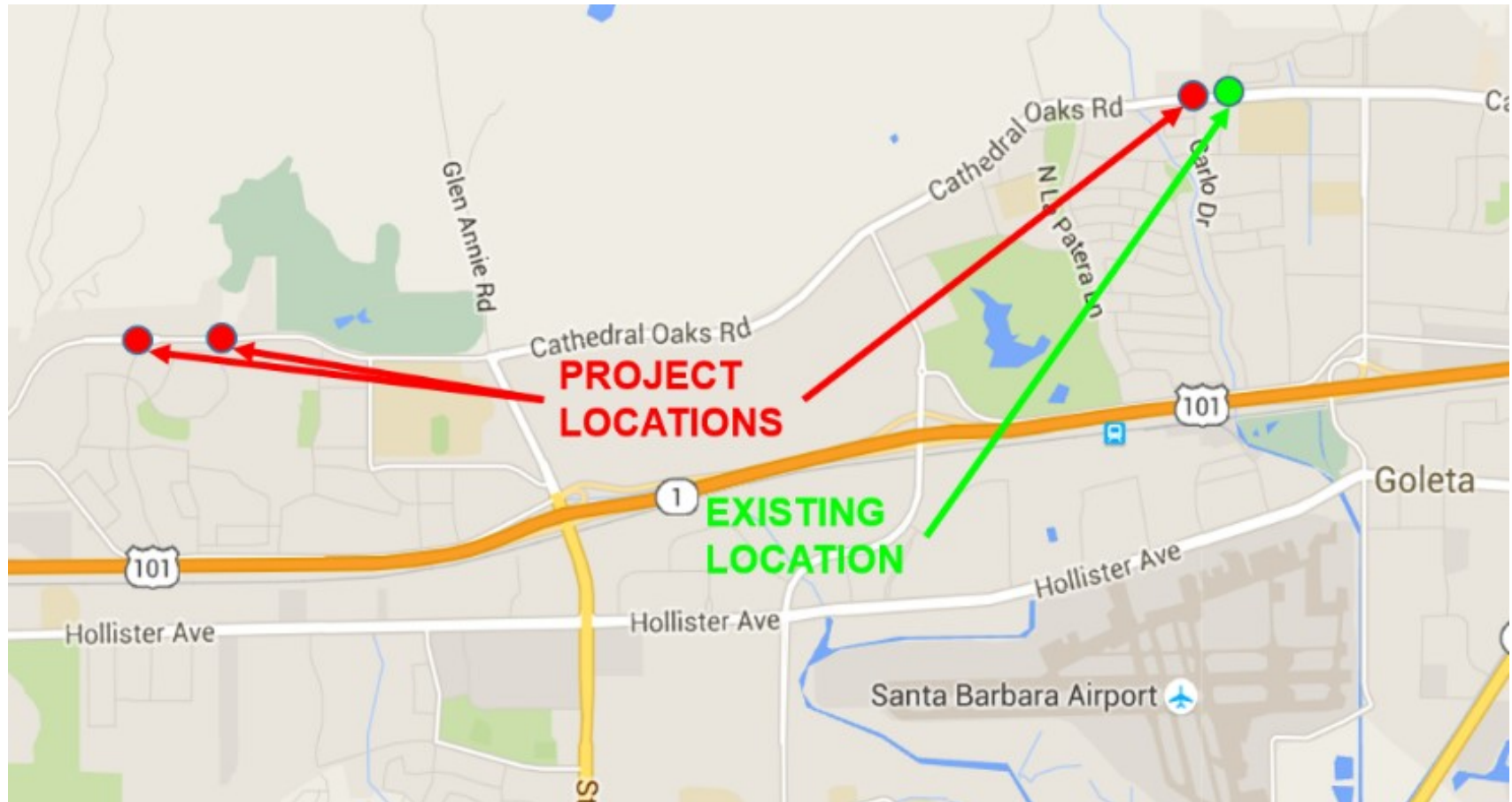
# Rancho La Patera Improvements

PF 2: Other Facilities of the City of Goleta  
PF 8: General Standards for Public Facilities



# Rectangular Rapid Flashing Beacons (RRFB) Improvements at School Crosswalks

TE 10: Pedestrian Circulation; TE 10.5: Pedestrian Safety; TE 12.2: Efficient Utilization of Transportation Facilities; PF 5: School Facilities





# Fairview Avenue Corridor Study

TE 10: Pedestrian Circulation  
TE 10.5: Pedestrian Safety  
TE 11: Bikeways Plan  
TE 11.5: Bicyclist Safety  
TE 14: Financing Transportation Improvements  
TE 15: Regional Transportation  
Figure 7-5: Pedestrian System Plan  
Figure 7-6: Bikeways Plan Map



# Hollister Ave and Fairview Ave Roundabout

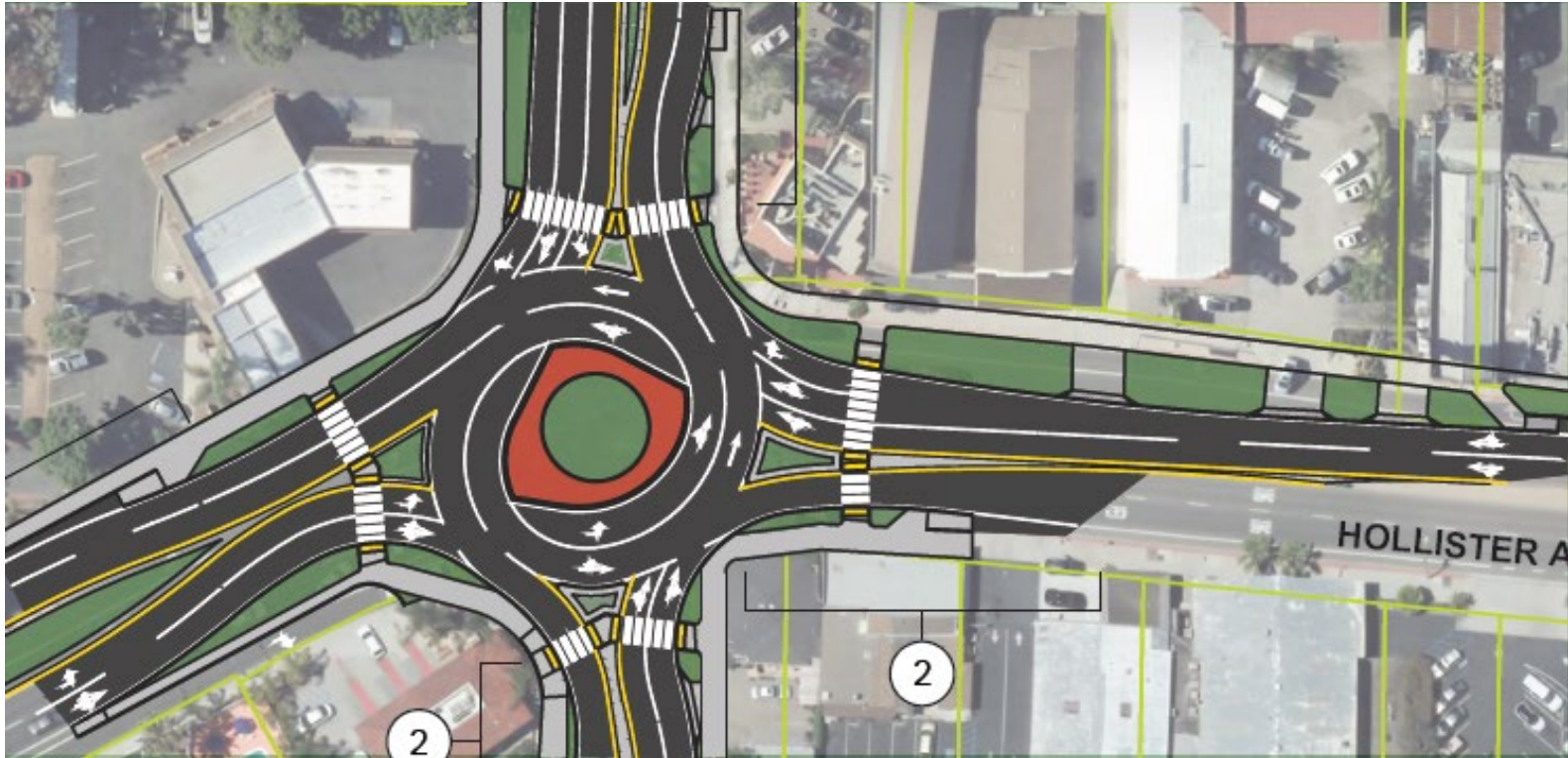


Figure 7-3: Map identification #30

Table 7-4: Identification #6 and #10

Figure 7-5: Pedestrian System Plan

Figure 7-6: Bikeways Plan Map

TE 5.4: Hollister Ave Redesign Improvements

TE 5.9: Street Frontage Improvements

TE 5.10: Major Intersection Improvements

TE 10: Pedestrian Circulation

TE 10.5: Pedestrian Safety

TE 11: Bikeways Plan

TE 11.5: Bicyclist Safety

TE 14: Financing Transportation  
Improvements

TE 15: Regional Transportation



# AMTRAK Depot

TE 7.3 Intermodal Transportation Center/Bus Transfer Areas

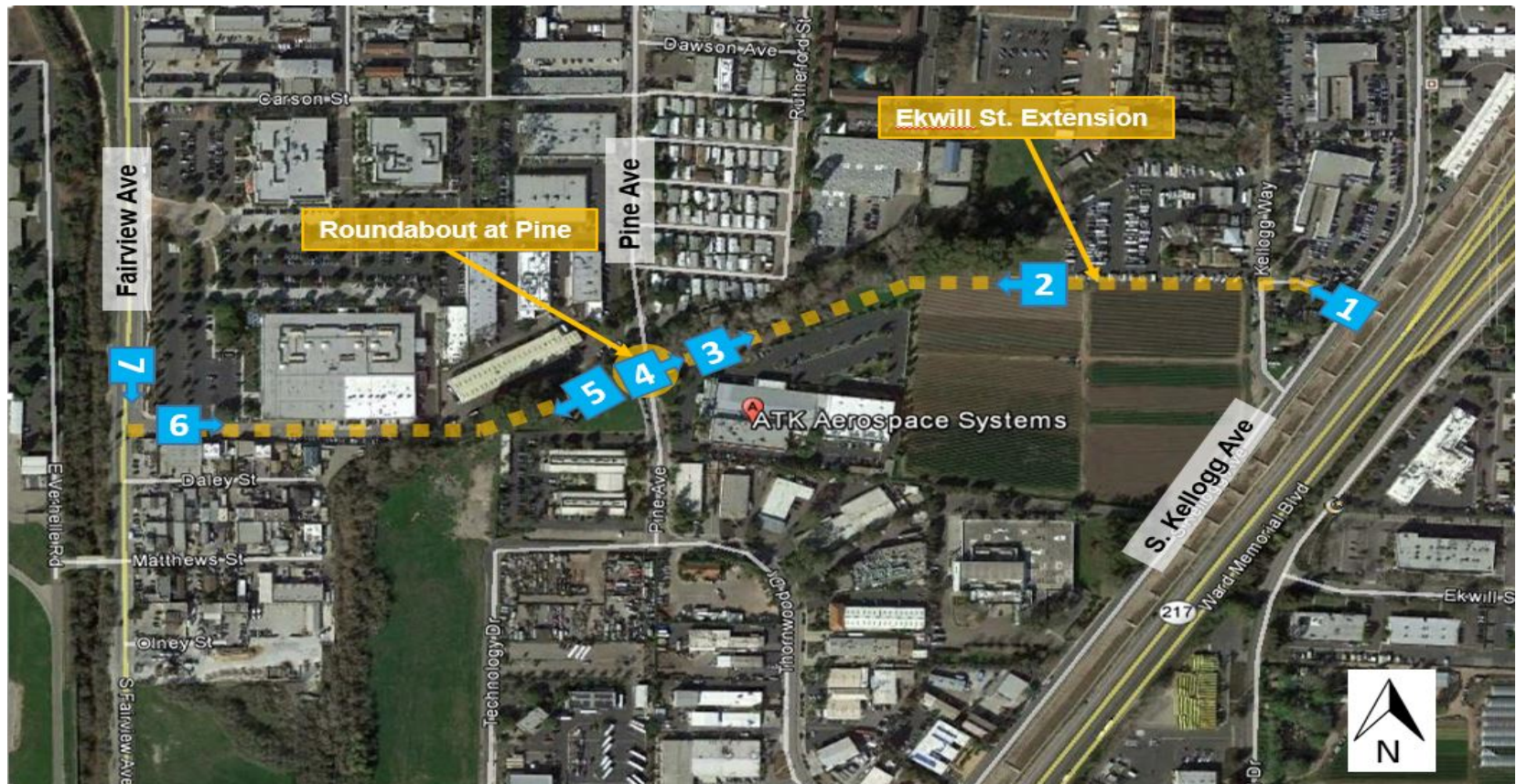
Figure 7-4: Public Transportation System





# Ekwill Street Extension

Fig 7-3; Table 7-4; TE 5.3: Ekwill-Kellogg; TE 5.4: Hollister Ave Redesign Improvements; TE 5.10: Major Intersection Improvements



# Bicycle and Pedestrian Master Plan

TE 6.2: Component Features Included in Street Standards

TE 10: Pedestrian Circulation

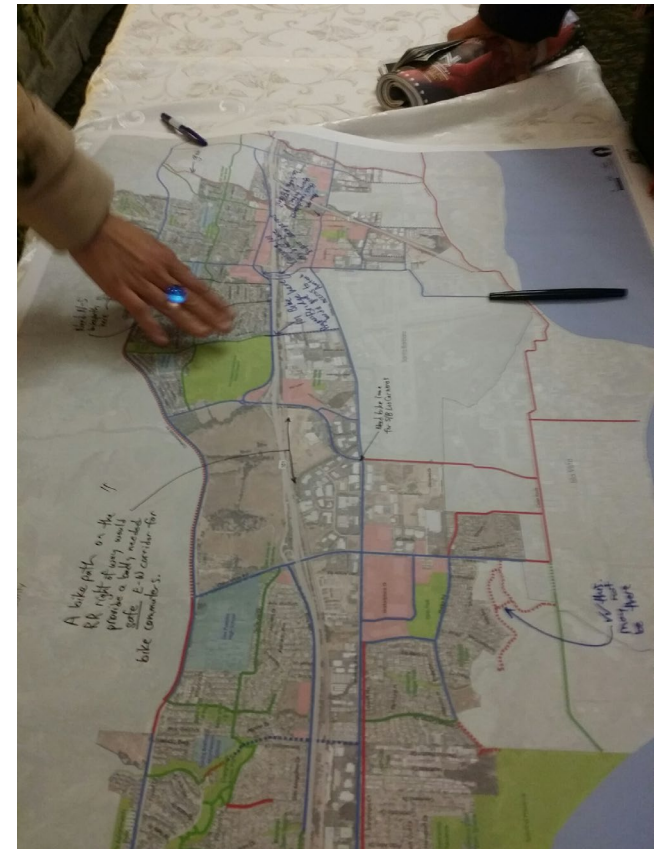
TE 11: Bikeways Plan

TE 14: Financing Transportation Improvements

TE 15: Regional Transportation

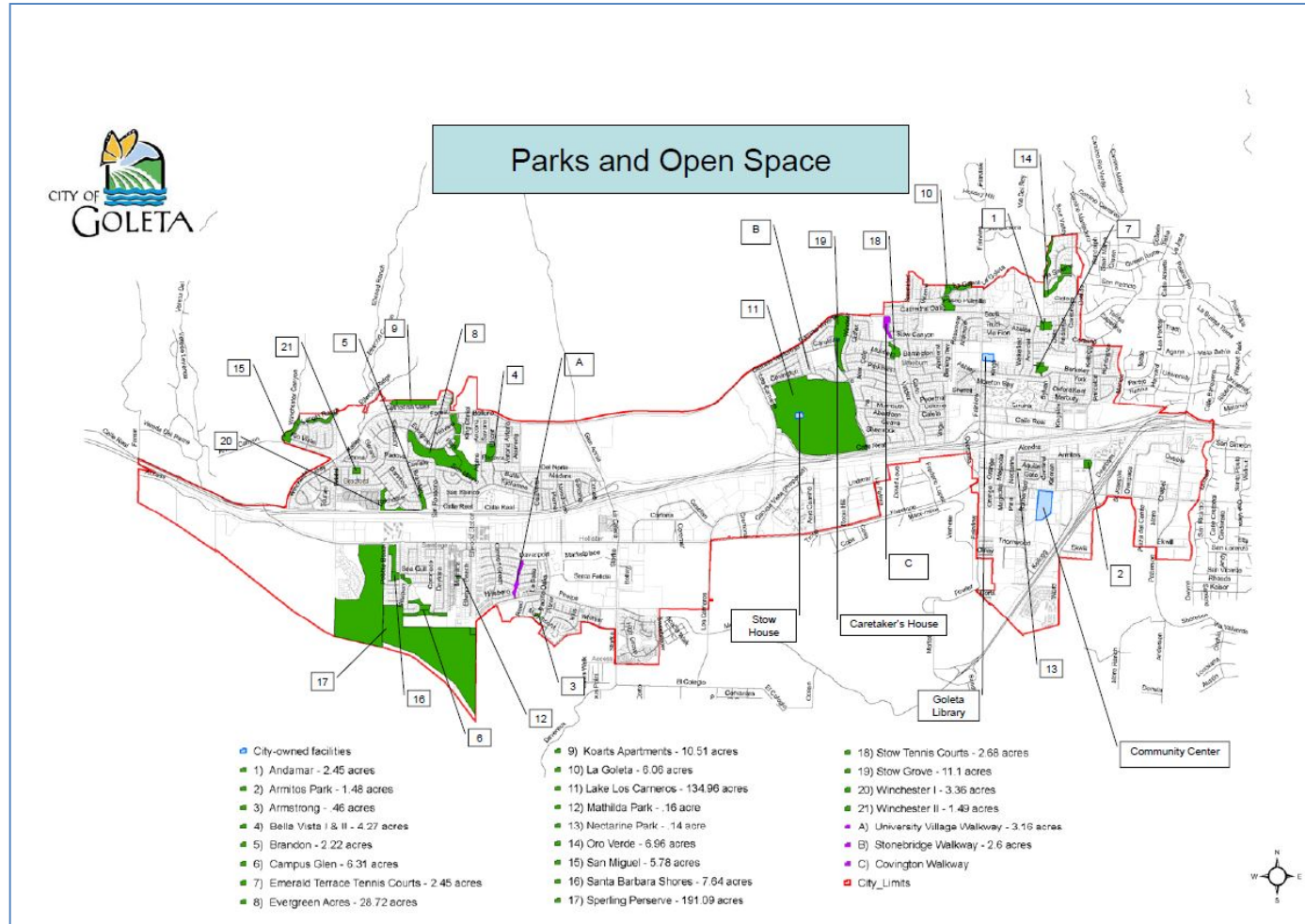
Figure 7-5: Pedestrian System Plan

Figure 7-6: Bikeways Plan Map





# Parks Master Plan

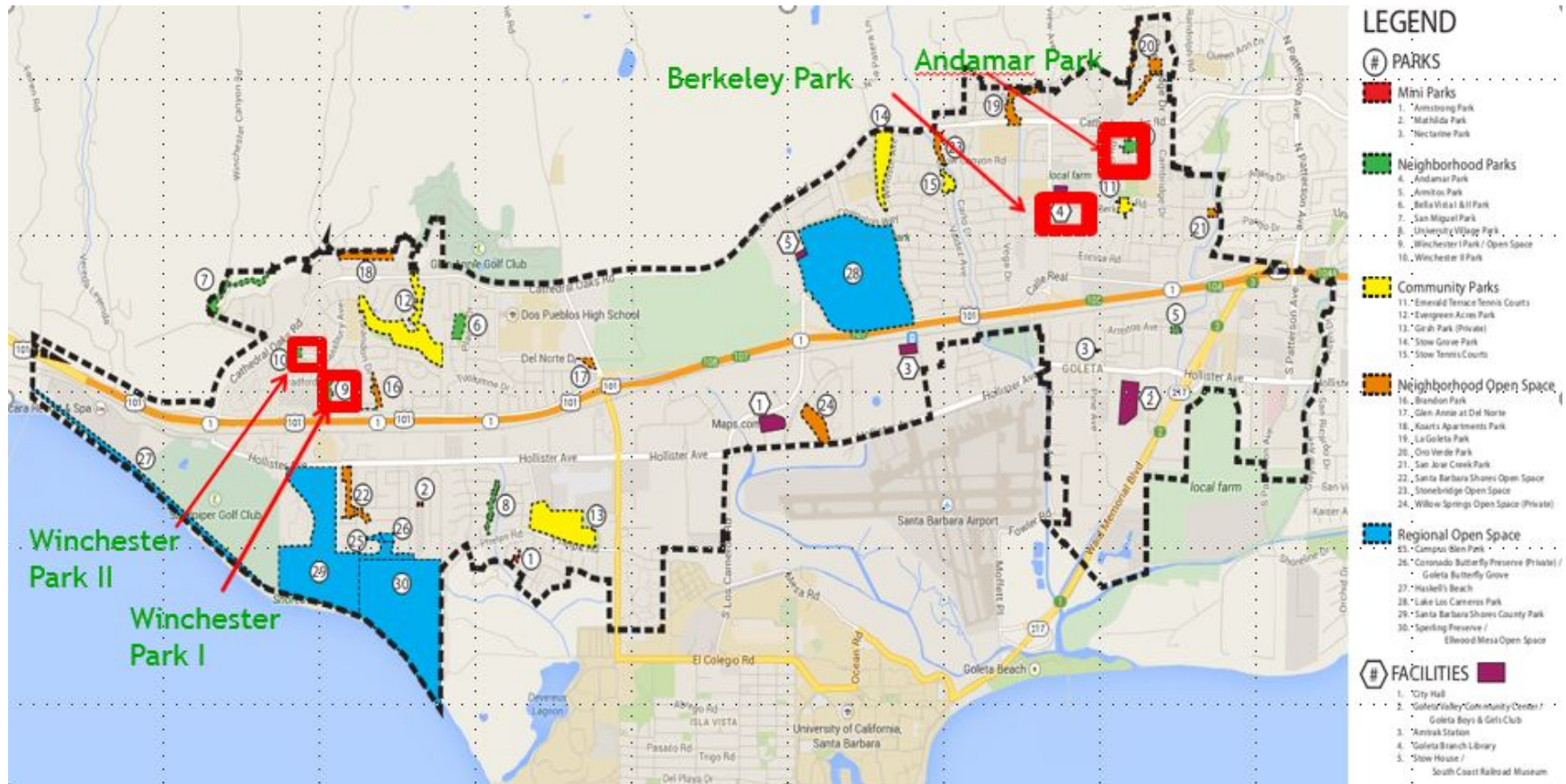


OS 6: Public Park System Plan

OS 7.5: Open Space for Outdoor Recreation



# Misc. Park Improvements

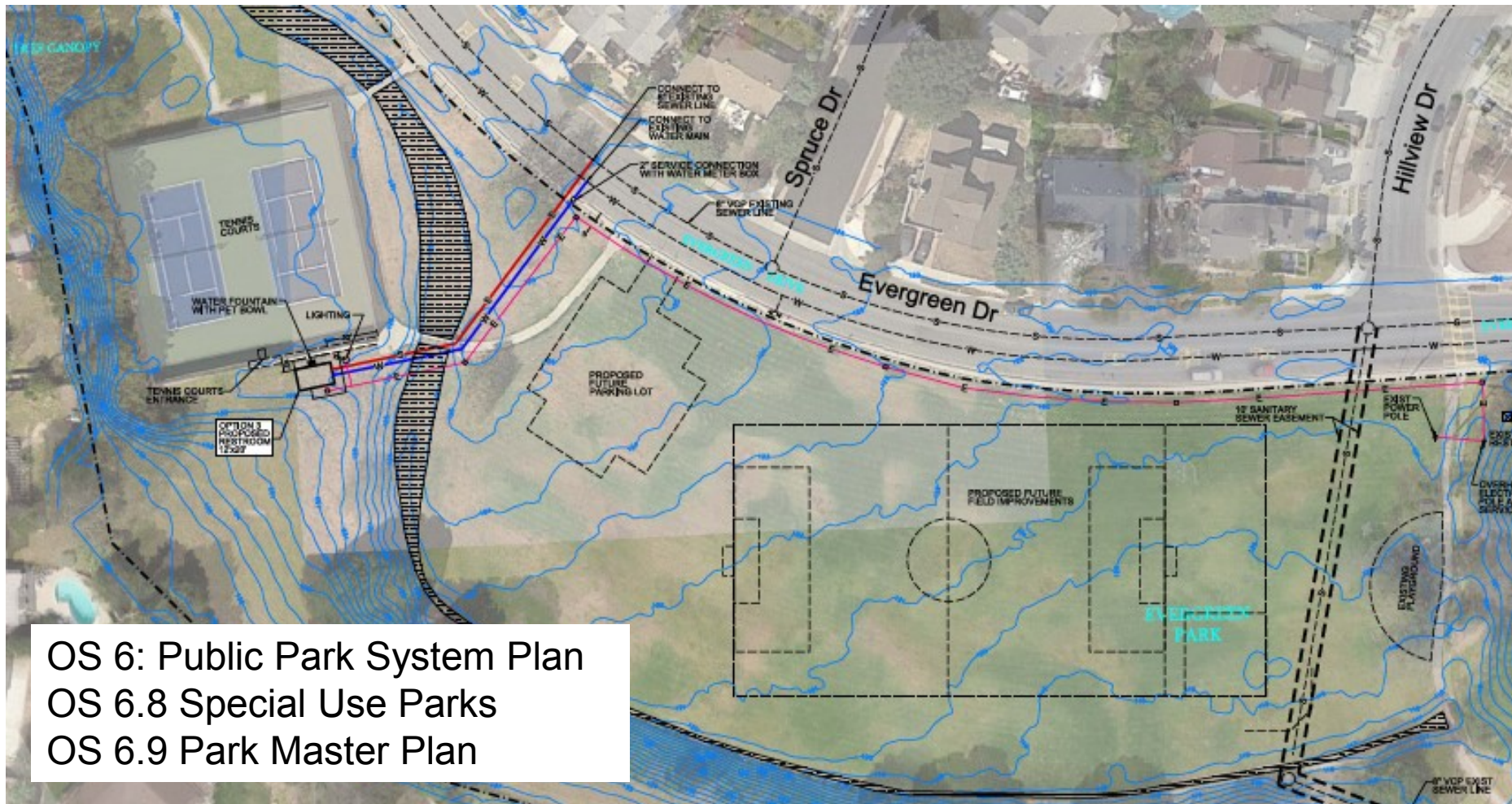


OS 6: Public Park System Plan

SE 1: Safety in General

PF 8: General Standards for Public Facilities

# Evergreen Multi-Purpose Field



OS 6: Public Park System Plan

OS 6.8 Special Use Parks

OS 6.9 Park Master Plan



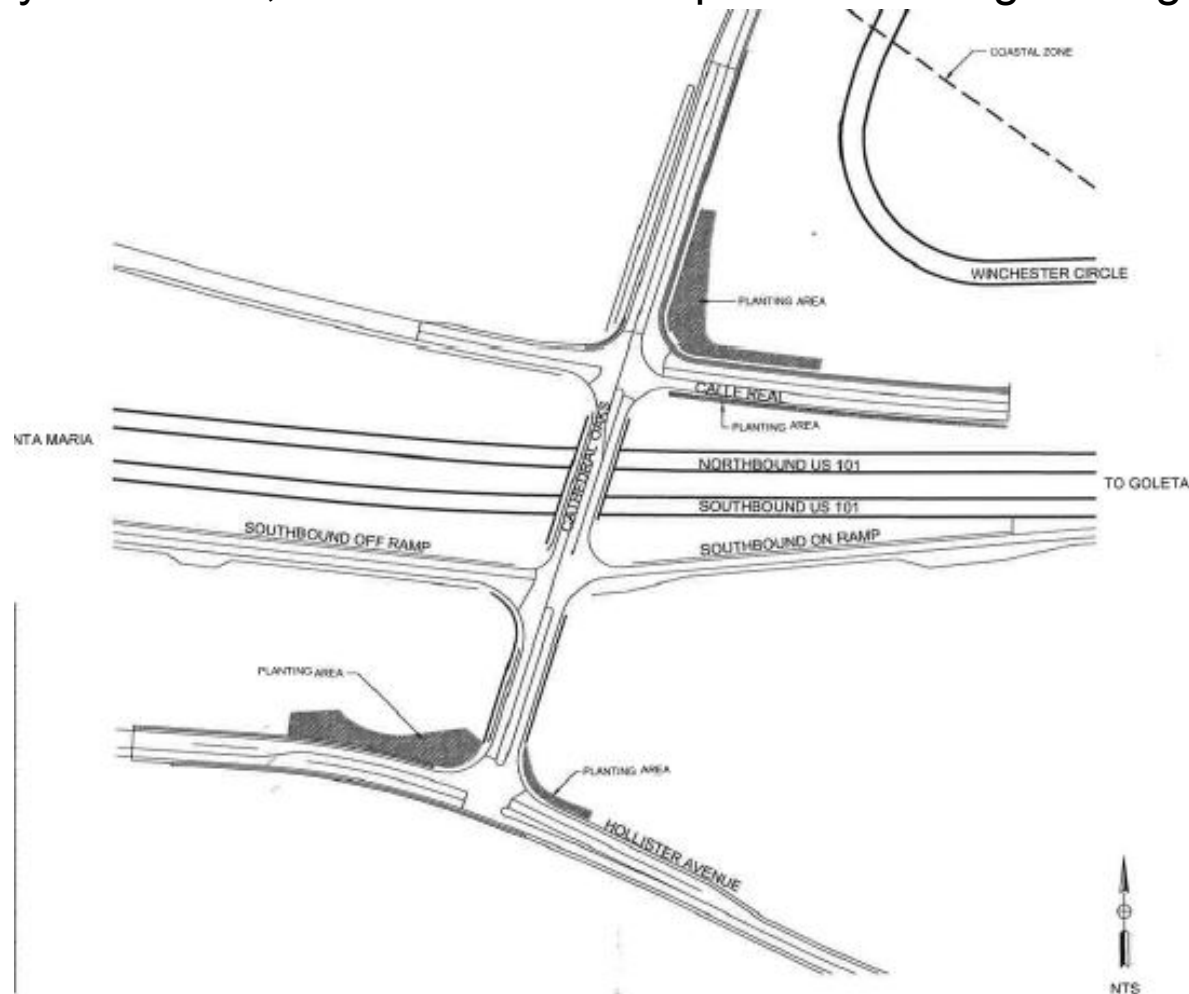
# Community Garden



OS 6: Public Park  
System Plan

# Cathedral Oaks Landscaping Enhancements

VH 2.1: Designated Scenic Corridor; VH 2.6: Gateways to the City; VH 3: Community Character; VH 4.10: Streetscape and Frontage Design





# Ward Memorial Class II Bike Lanes





# Magnolia Sidewalk Infill – South

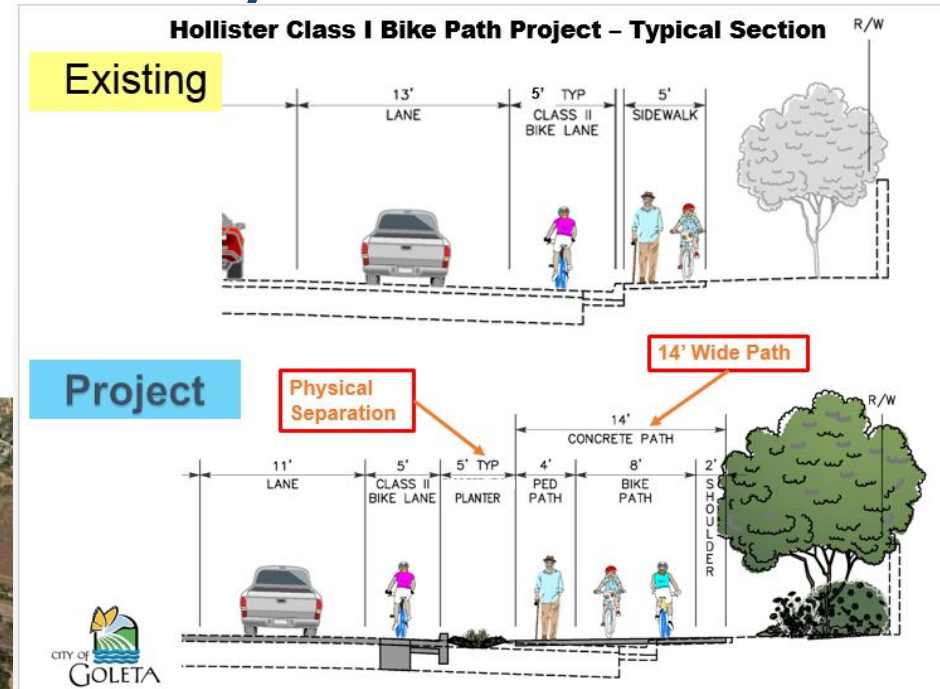




# Hollister Class I Bikeway

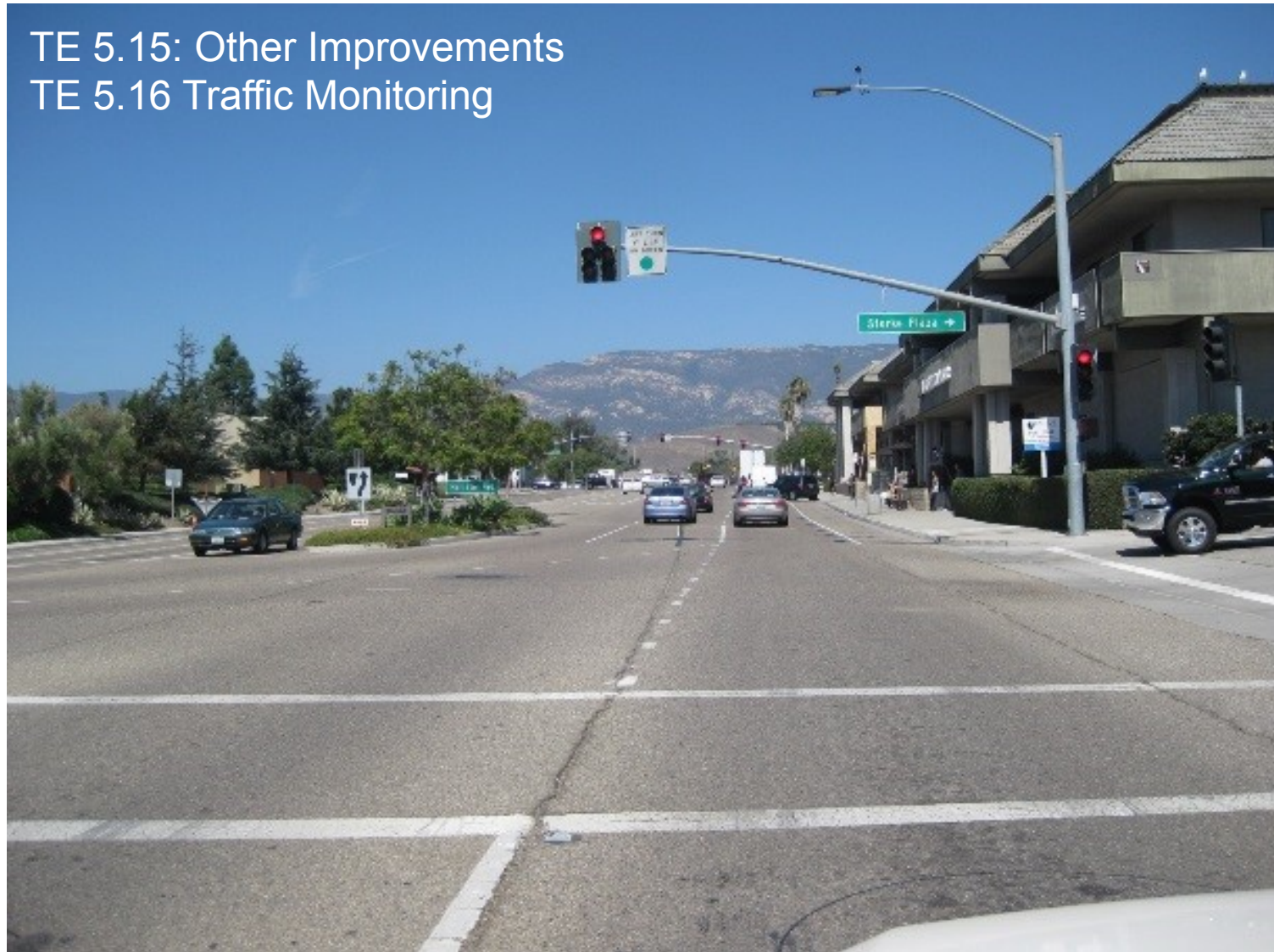
TE 11.5: Bicyclist Safety

Figure 7-6: Bikeways Plan Map  
Planned Bikeway



# Storke Road Medians

TE 5.15: Other Improvements  
TE 5.16 Traffic Monitoring





# Reclaimed Water Service to Bella Vista Park

CE 10: Watershed Management and Water Quality  
CE 15: Water Conservation and Materials Recycling



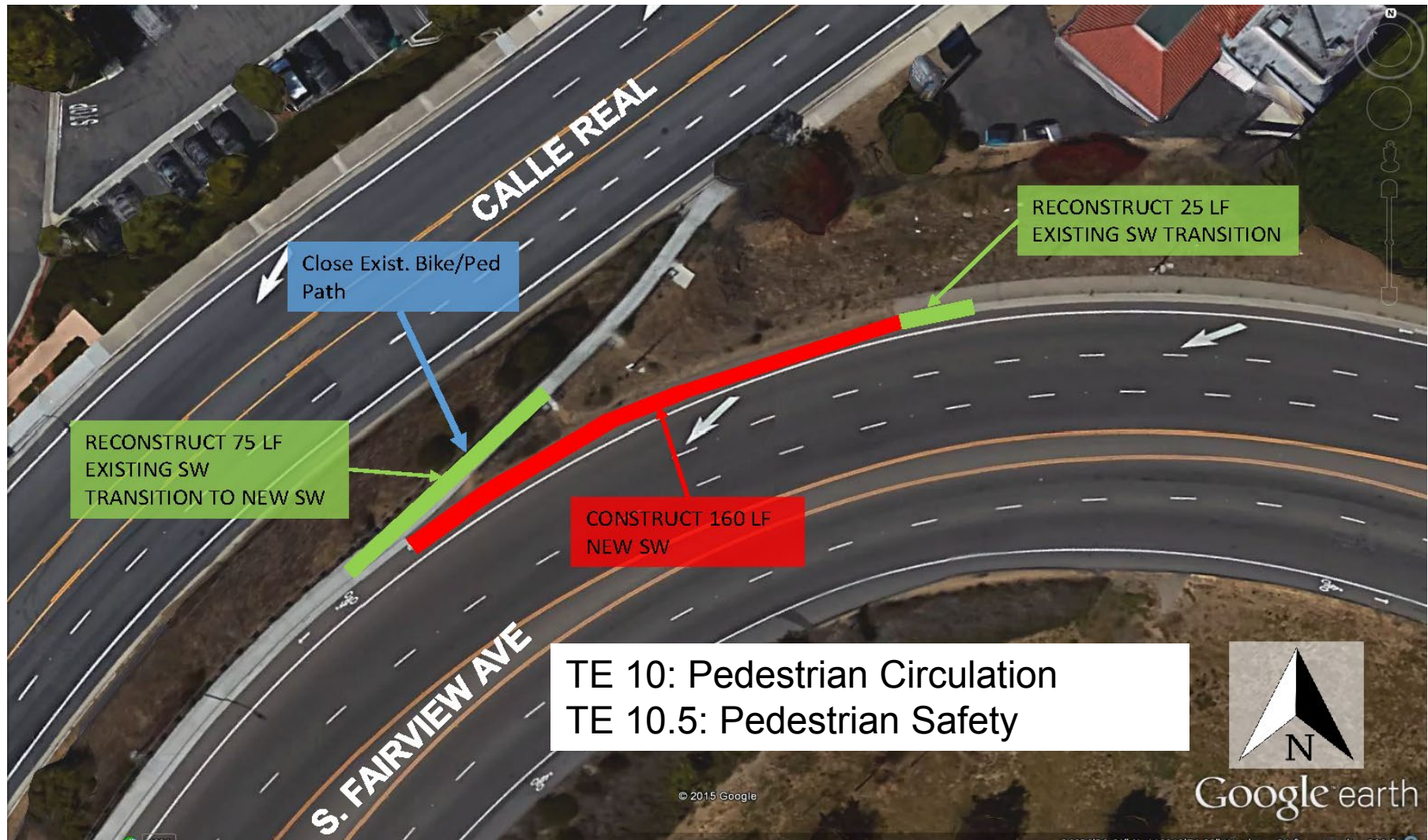
# Goleta Community Center Repairs

PF 8: General Standards for Public Facilities





# Fairview Ave Sidewalk Improvements at US Calle Real and US 101





# La Patera Road Overcrossing/Undercrossing

TE 5.5 New US-101  
Freeway Crossings;  
TE 5.15 Other  
Improvements;  
TE 10: Pedestrian  
Circulation;  
TE 10.5: Pedestrian  
Safety;  
TE 11.5: Bicyclist Safety;  
Figure 7-3: Map  
identification #5;  
Table 7-4: Identification #5





# Calle Real Sidewalk Infill - La Patera to Los Carneros

TE 10: Pedestrian Circulation; TE 10.5: Pedestrian Safety





# Lake Los Carneros Aeration Project

## OS 7.5: Open Space for Outdoor Recreation





# Misc. Facilities Improvements



PF 2: Other Facilities of the City of Goleta  
PF 8: General Standards for Public Facilities



# LED Street Lighting

SE 1: Safety in General



# Ellwood Trails and Restoration Design

OS 5.5: Use and Mgmt. of the Open Space Area; O.S. 5.3: Public Access and Recreation





# ONGOING

---

# Well Abandonment and Restoration

OS 5.5: Use & Mgmt. of the Open Space Area

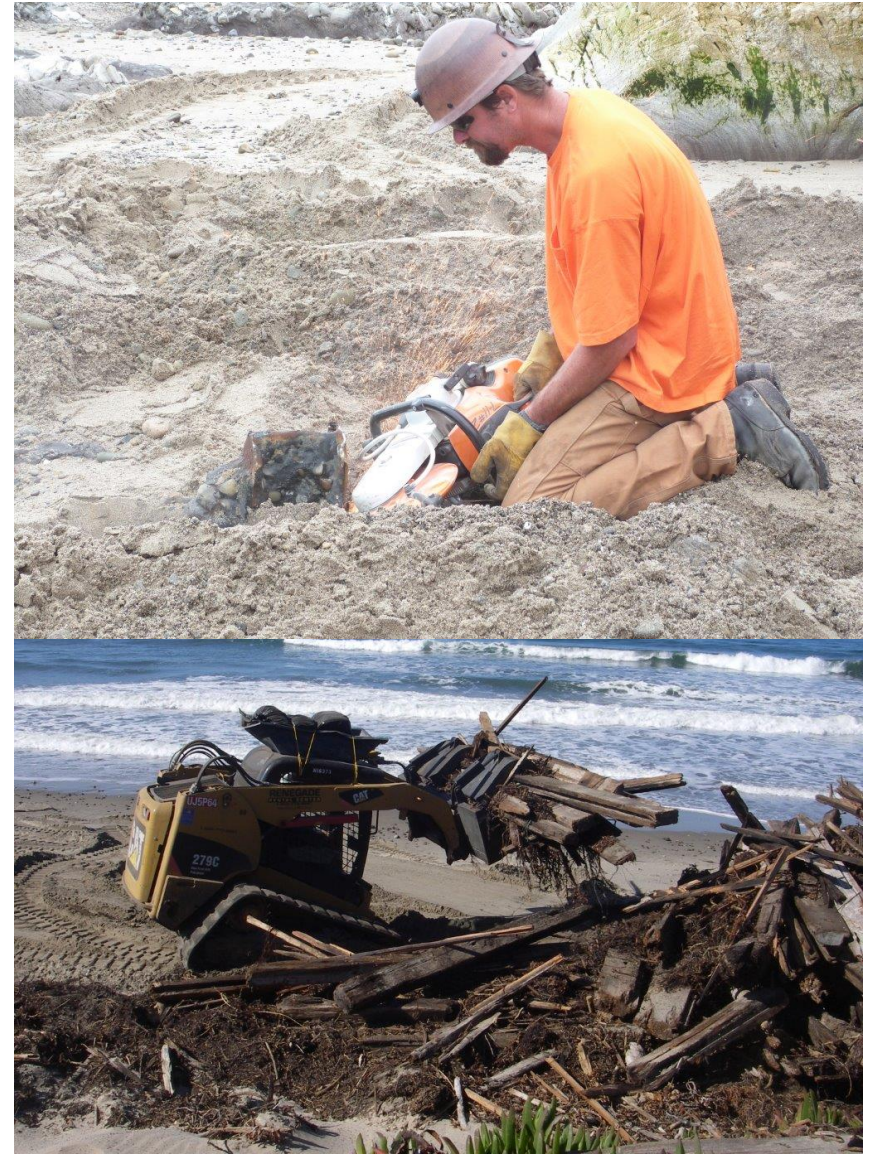
OS 5.3: Public Access & Recreation



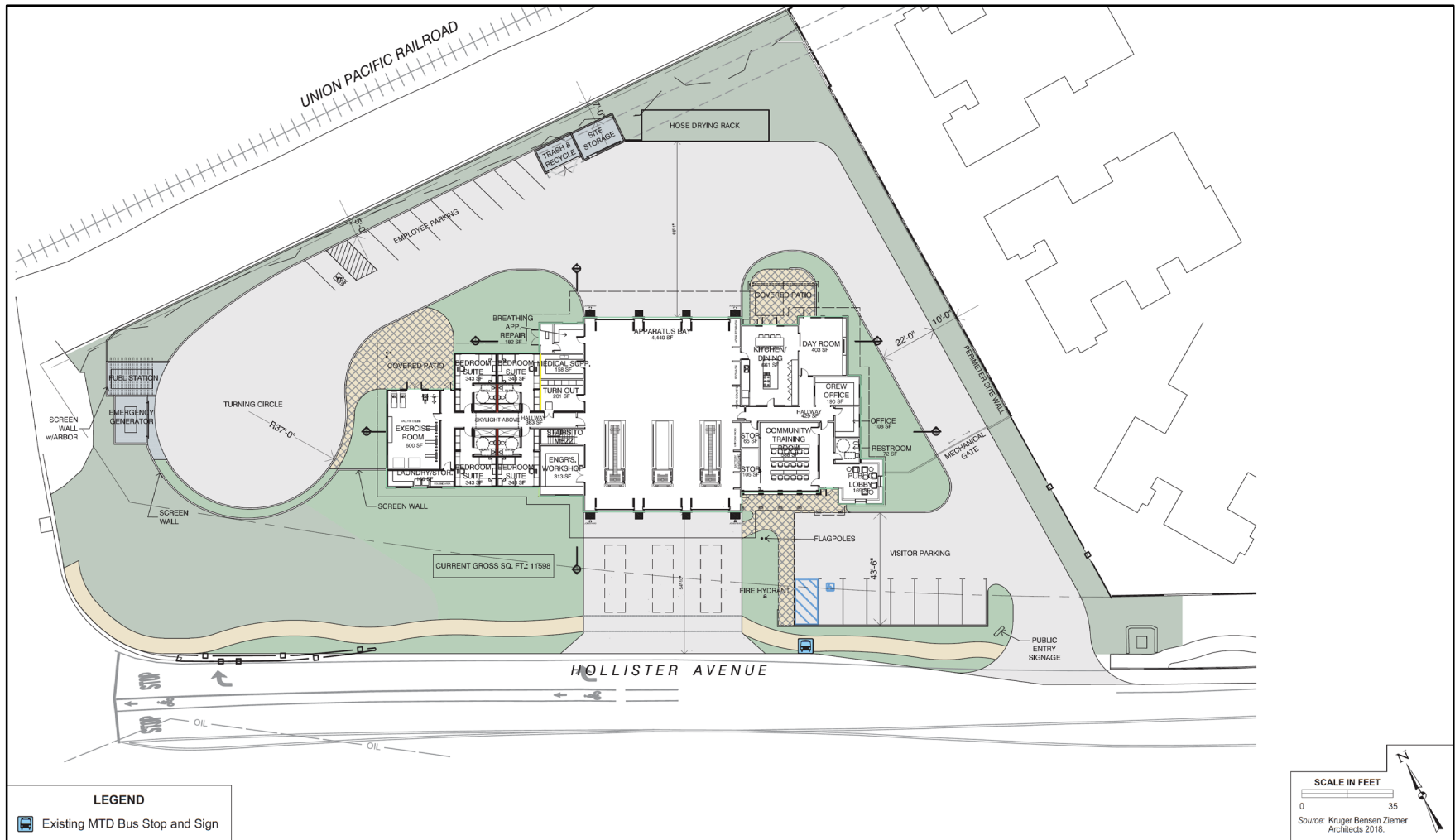


# Beach Hazards Removal

## SE 8: Oil and Gas Industry Hazards



## PF 3.2: New Fire Station in Western Goleta





# Revisions to the Capital Improvement Program (CIP)

- Council Adopted the Goleta Bicycle and Pedestrian Master Plan (BPMP) – October 16, 2018.
- New Development Impact Fee (DIF) Ordinance
- Comprehensive CIP list
  - BPMP
  - DIF
  - Stormwater Projects

