

*Draft Airport Land Use  
Compatibility Plan:  
Santa Barbara Municipal Airport*

Goleta City Council

September 3, 2019

Michael Becker  
Director of Planning, SBCAG

- California Aeronautics Act
- Role of Caltrans
- Role of the Airport Land Use Commission
- Role of Local Agencies
- Draft ALUCP for Santa Barbara Municipal Airport

# Airport Land Use Commission (ALUC)

- SBCAG is the ALUC for Santa Barbara County
- Purpose:
  - "to protect public health, safety, and welfare by ensuring the orderly expansion of airports and the adoption of land use measures that minimize the public's exposure to excessive noise and safety hazards within areas around public airports to the extent that these areas are not already devoted to incompatible uses" (Pub. Util. Code, § 21670(a)(2)).
- Responsibilities:
  - Maintain the region's Airport Land Use Compatibility Plan
  - Perform consistency determinations

# Aeronautics Act

- The State Aeronautics Act (Pub. Util. Code § 21001 *et seq.*) provides the foundation for Caltrans' aviation policies.
- Article 3.5 of the Act (Pub. Util. Code §§ 21670 - 21679.5) establishes the requirement for every county with a public-use airport to establish an Airport Land Use Commission (ALUC) (Section 21670).
- The Act requires Caltrans to assist in ALUC training and development through education and preparation of the *Airport Land Use Planning Handbook* (Pub. Util. Code §§ 21674.5 and 21674.7).

# Caltrans

- Periodically update the California Airport Land Use Planning Handbook (2011)
- Assist ALUCs in developing and implementing plans
- Perform certain compatibility reviews (schools, state buildings)

# Airport Land Use Commission Authority

- To assist local agencies in ensuring compatible land uses in the vicinity of all new airports and in the vicinity of existing airports to the extent that the land in the vicinity of those airports is not already devoted to incompatible uses.
- To coordinate planning at the state, regional, and local levels so as to provide for the orderly development of air transportation, while at the same time protecting the public health, safety, and welfare.
- To review the plans, regulations, and other actions of local agencies and airport operators pursuant to Section 21676 of the Public Utilities Code.
- To prepare and adopt an airport land use compatibility plan pursuant to Section 21675 of the Public Utilities Code.

# Airport Land Use Commission Limitations

- ALUCs have no authority over existing land uses regardless of whether such uses are incompatible with airport activities (Pub. Util. Code, § 21670 (a)(2) and § 21674(a)).
- ALUCs have no jurisdiction over the "operation of airports" (Pub. Util. Code, § 21674(e)).
- ALUCs have no jurisdiction over federal lands, such as military bases and lands controlled by the U.S. Forest Service, U.S. Bureau of Land Management, or lands under the authority of American Indian tribes and bands (Pub. Util. Code, § 21675(b)).

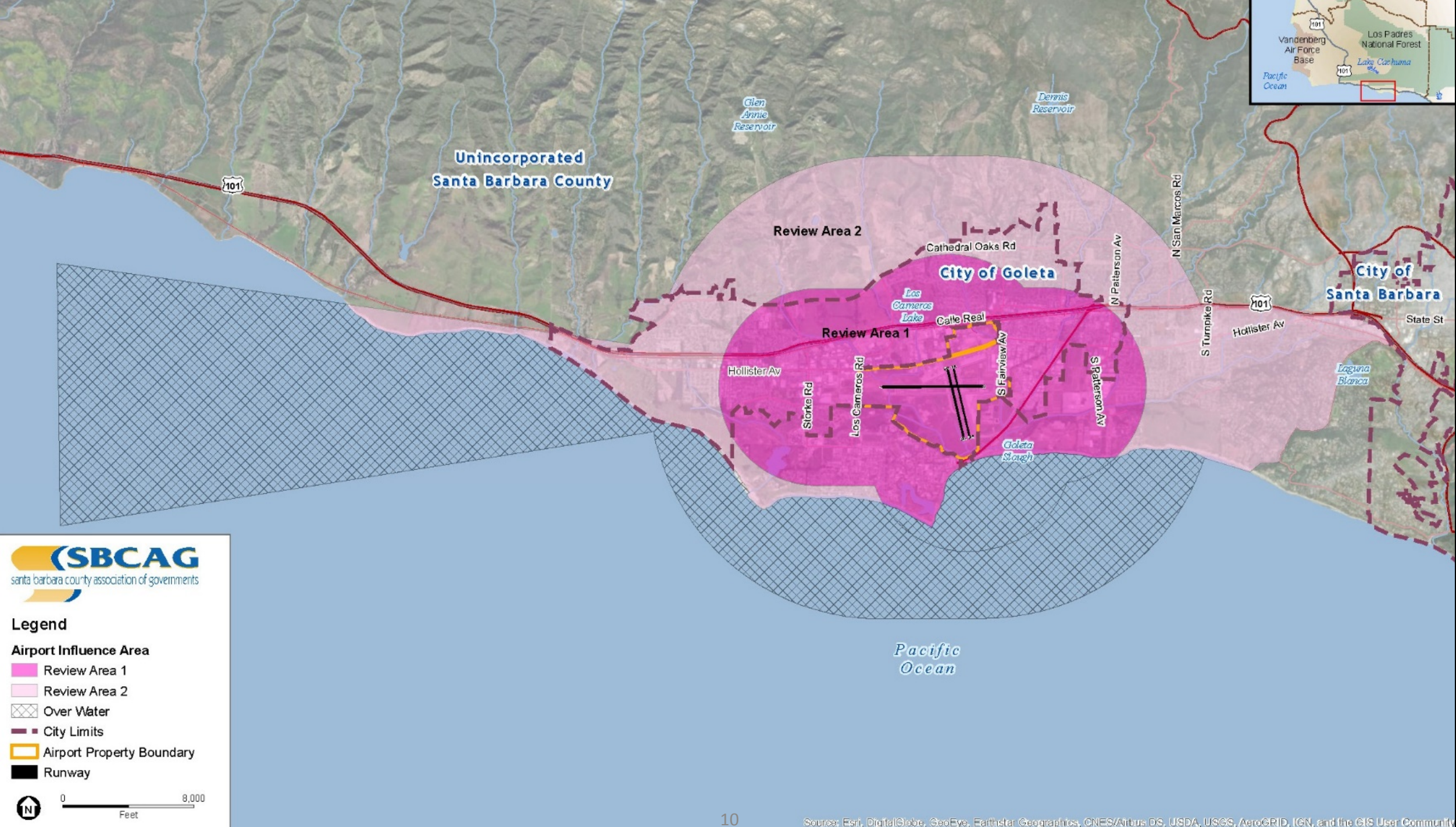
# Local Agencies

- After an ALUC has adopted an ALUCP, affected local governments have 180-days to update their general plans, specific plans, and regulations to be consistent with the ALUCP (Gov't. Code, § 65302.3).
- Alternatively, the city or county may overrule the commission, by a two-thirds vote of its governing body, if it makes specific findings that the proposed action, regulation, or permit is consistent with the purposes of Article 3.5 of the Act.
- If a local government agency fails to take either action, then it must submit all land use policy actions, development actions, and facility master plans within the airport influence area to the ALUC for review.

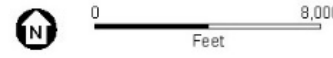


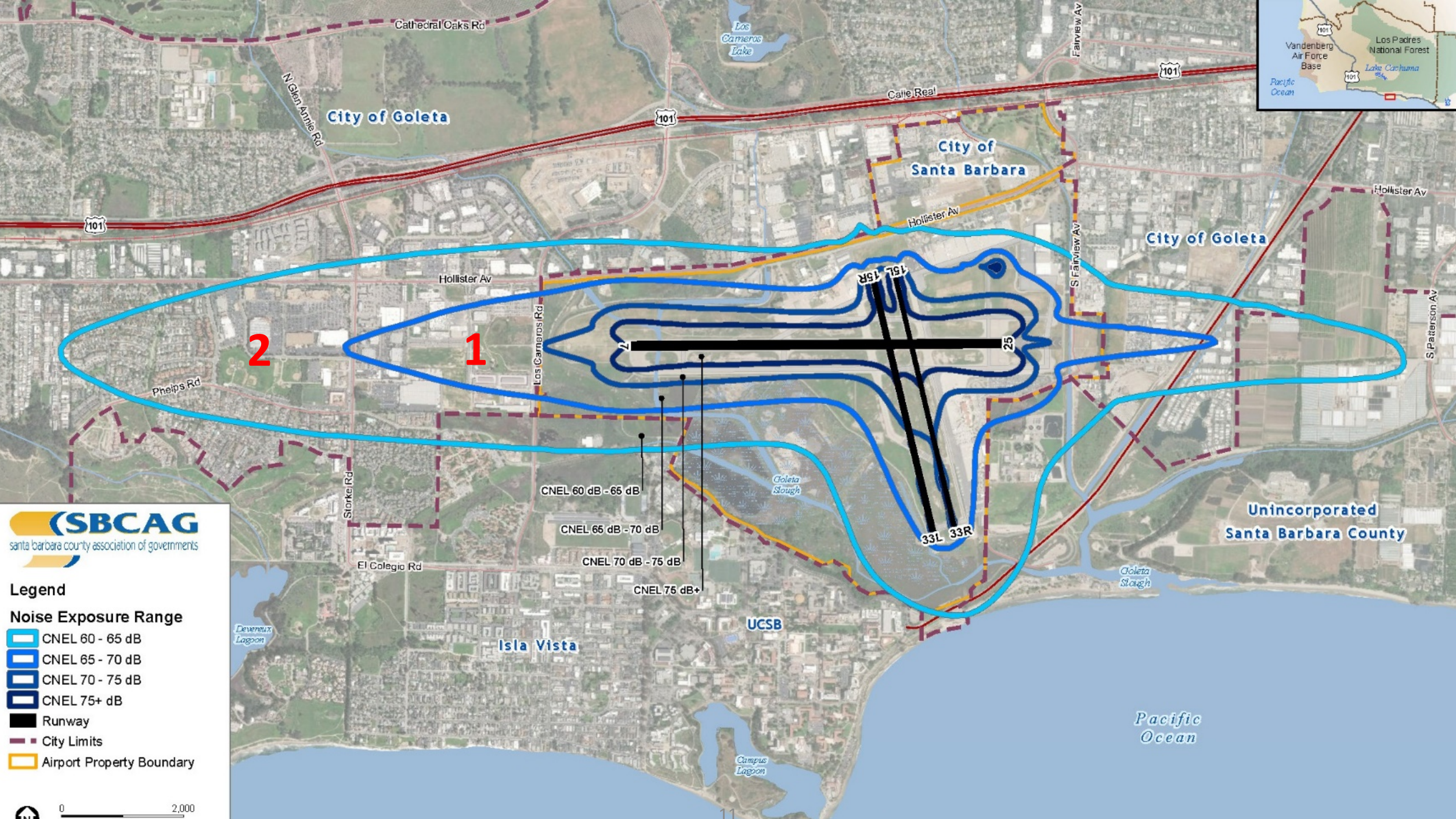
# Airport Land Use Compatibility Plan

- ALUCPs are planning documents that are based either on a long range master plan or an FAA-approved airport layout plan that reflects the anticipated growth of the airport during at least the next 20 years. (Pub. Util. Code, § 21675(a)).
- The ALUCP provides for the “orderly growth of each public airport and the area surrounding the airport” while safeguarding “the welfare of the inhabitants within the vicinity of the airport and the public in general” (Pub. Util. Code, § 21675 (a)).
- The ALUCP is designed to encourage compatible land uses in the vicinity surrounding an airport.



- Legend**
- Review Area 1
  - Review Area 2
  - Over Water
  - City Limits
  - Airport Property Boundary
  - Runway





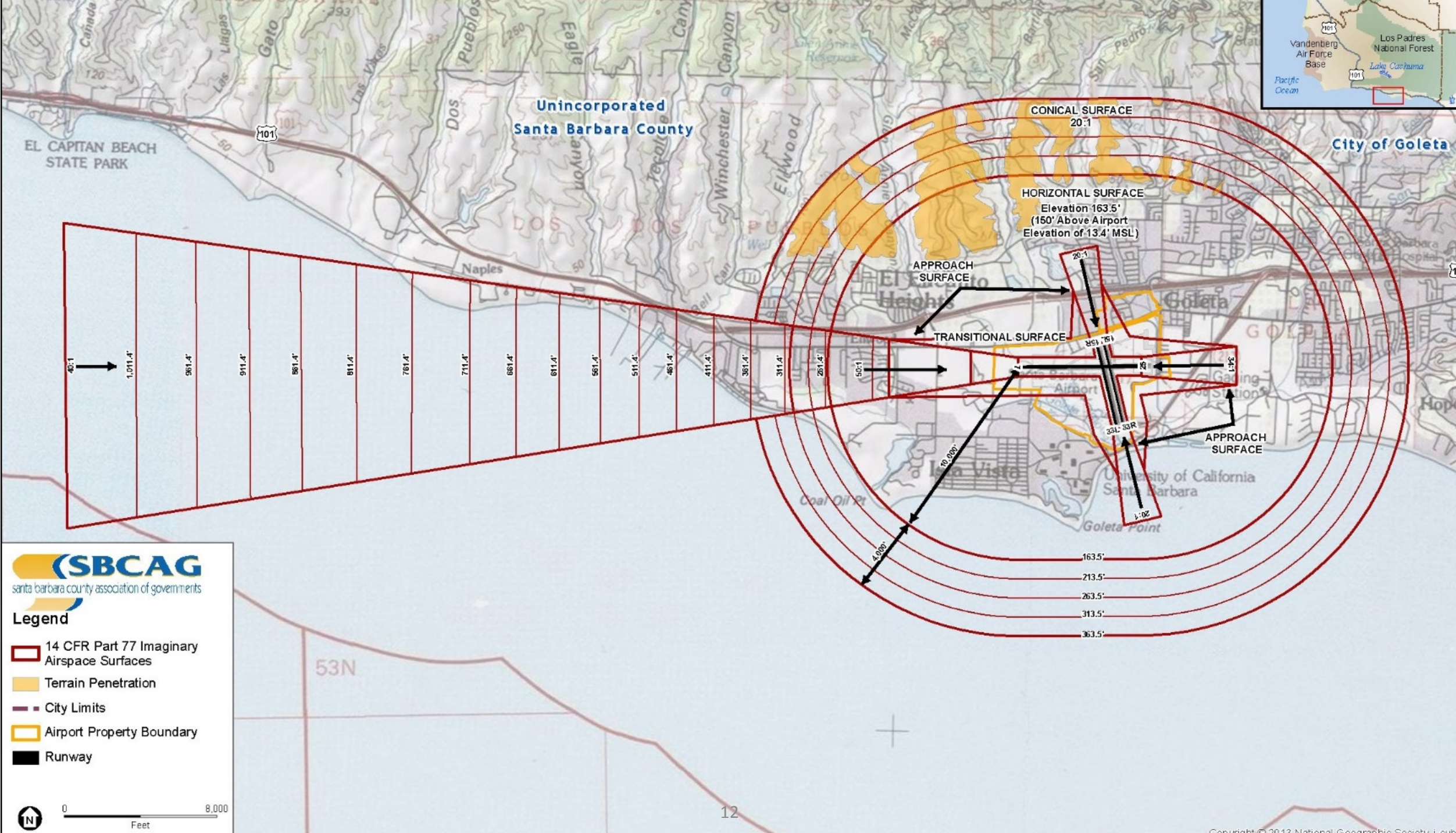
**SBCAG**  
santa barbara county association of governments

**Legend**

**Noise Exposure Range**

- CNEL 60 - 65 dB
- CNEL 65 - 70 dB
- CNEL 70 - 75 dB
- CNEL 75+ dB
- Runway
- City Limits
- Airport Property Boundary





Unincorporated  
Santa Barbara County

City of Goleta

CONICAL SURFACE  
20:1

HORIZONTAL SURFACE  
Elevation 163.5'  
(150' Above Airport  
Elevation of 13.4' MSL)

APPROACH SURFACE

TRANSITIONAL SURFACE

APPROACH SURFACE

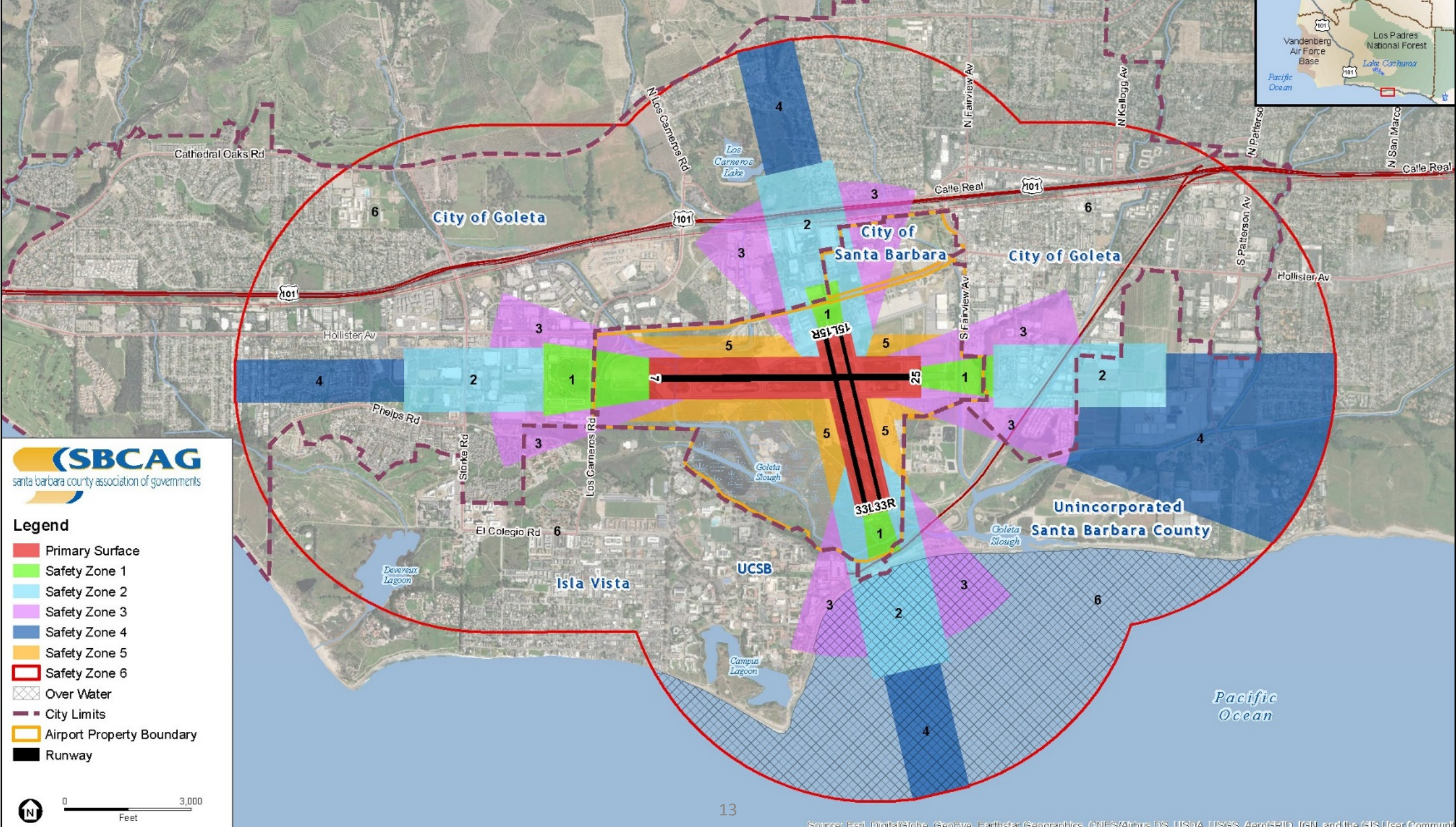


**Legend**

- 14 CFR Part 77 Imaginary Airspace Surfaces
- Terrain Penetration
- City Limits
- Airport Property Boundary
- Runway



163.5'  
213.5'  
263.5'  
313.5'  
363.5'



- Legend**
- Primary Surface
  - Safety Zone 1
  - Safety Zone 2
  - Safety Zone 3
  - Safety Zone 4
  - Safety Zone 5
  - Safety Zone 6
  - Over Water
  - City Limits
  - Airport Property Boundary
  - Runway





Lake Los  
Carnaros Park

Santa Barbara  
Shores  
County Park

More Mesa

Santa Barbara  
Airport

Goleta Slough  
State Marine  
Conservation  
Area

Goleta  
Beach Park

University of  
California  
Santa Barbara

# Draft ALUCP for SBA

- Policies
  - Secondary units (ADUs) are excluded from density calculations (3.3.4 (c))
  - A single-family home may be constructed in any zone, except zone 1, as permitted by local regulation (3.3.4 (d))

# Summary

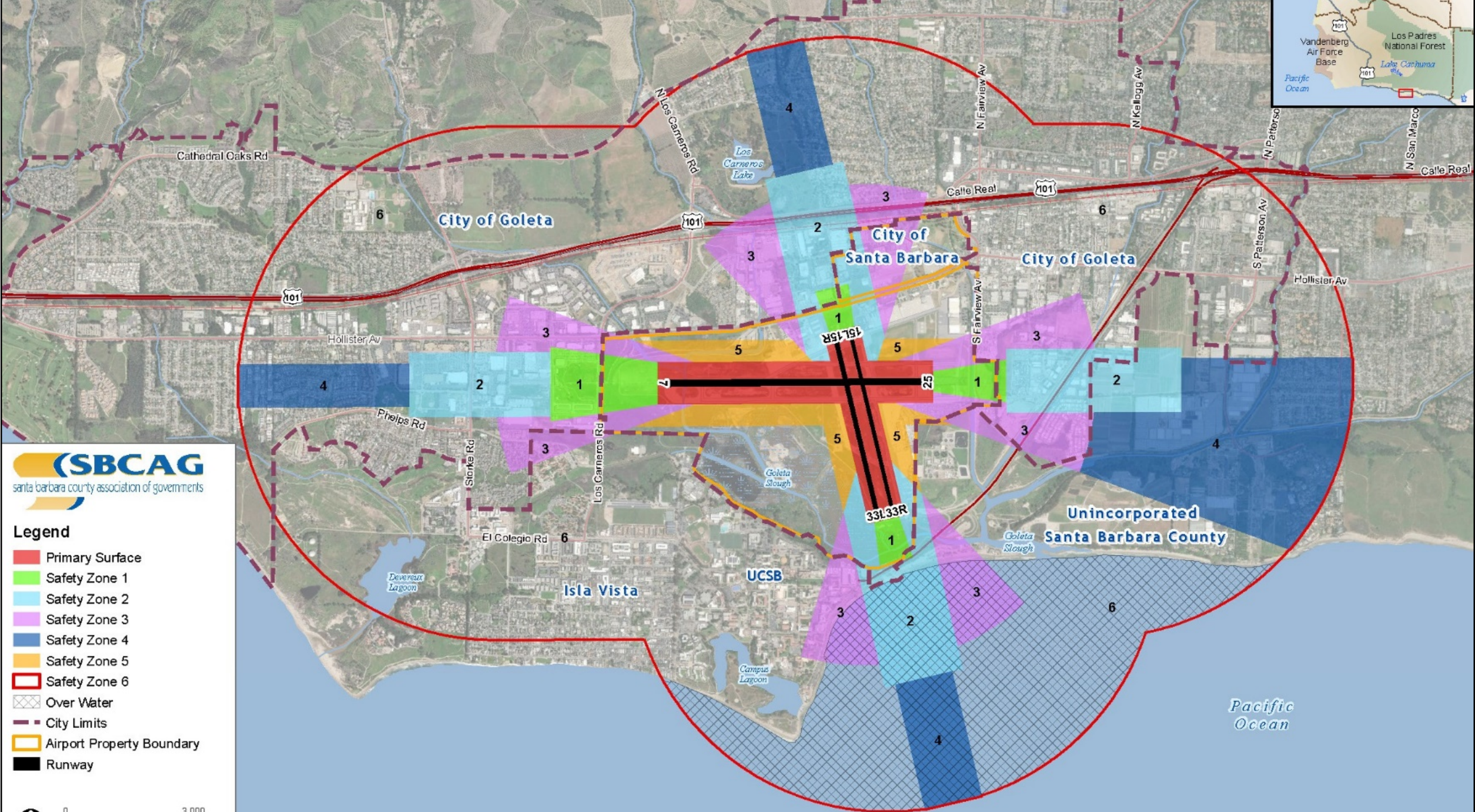
- The ALUCP provides for the “orderly growth of each public airport and the area surrounding the airport” while safeguarding “the welfare of the inhabitants within the vicinity of the airport and the public in general” (Pub. Util. Code, § 21675 (a)).
- Alternatively, the city or county may overrule the commission, by a two-thirds vote of its governing body, if it makes specific findings that the proposed action, regulation, or permit is consistent with the purposes of Article 3.5 of the Act.



# Contact

- CEQA comments until September 16, 2019
  - Andrew Orfila
  - [aorfila@sbcag.org](mailto:aorfila@sbcag.org) or (805) 961.8907
- General questions
  - Michael Becker
  - [mbecker@sbcag.org](mailto:mbecker@sbcag.org) or (805) 961.8912

*[sbcag.org/airport-land-use-commission](http://sbcag.org/airport-land-use-commission)*



- Legend**
- Primary Surface
  - Safety Zone 1
  - Safety Zone 2
  - Safety Zone 3
  - Safety Zone 4
  - Safety Zone 5
  - Safety Zone 6
  - Over Water
  - City Limits
  - Airport Property Boundary
  - Runway

