

DESIGN REVIEW BOARD
FINAL APPROVAL
City of Goleta
Planning and Environmental Services
Date: 11/13/2018 By: [Signature]

CITY OF GOLETA
Zoning Administrator
Case No. 18-116-05P Exhibit No.
Date Accepted Jan 22, 2019
Dates Considered Jan 22, 2019
Date Approved Jan 22, 2019
[Signature]

OVERALL SIGN PROGRAM
DATE: NOVEMBER 20, 2018

TARGET BUILDING & SHOPPING CENTER

PREPARED FOR:

MerloneGeier
Partners



PREPARED BY:

rtd ROMERO THORSEN DESIGN
3025 Olympic Boulevard, Ste. 117
Santa Monica, California 90404
tel 310.315.3577
www.rtd-la.com

TARGET SIGN MANUFACTURER:



1.0 INTRODUCTION

1.1 The purpose of this criteria is to establish the requirements and guidelines for the design of the shopping center's identity including; site identification, and ample tenant building identification. The objective is to create high quality signage which is an integral part of the architecture and site characteristics. The intent of this criteria is to insure that all signage at 6861 & 6865 Hollister Ave is designed and executed in a manner which will achieve these objectives and provide superior identification of tenants and tenants' business, including the integration of national retail brands.

2.0 GENERAL NOTES

- 2.1 All tenant signage shall be subject to landlord's prior written approval. Each tenant is required to submit LANDLORD APPROVED drawings of each sign to all agencies requiring approval and permitting.
- 2.2 All signage must comply with applicable codes and sign ordinance for the City of Goleta, California. All signs and their installation must comply with all local building, zoning, and electrical codes. Designs and sign replacement must be approved by Landlord, and the City of Goleta, California. Each tenant shall pay for all required approvals and permits from any agencies requiring approval.
- 2.3 Tenants shall pay for all of the identity signs, their installation and maintenance. All work must be of excellent quality and identical in workmanship, materials and background color to all other signs in the center. Landlord reserves the right to reject any signage submittal judged to be non-conforming, or any completed sign which is considered below the center's standard for quality and workmanship.
- 2.4 Signs shall be maintained in good repair. Tenant shall be responsible for the timely removal of, and replacement of any sign deemed by the City and or Landlord in need of repair.
- 2.5 Tenants are encouraged to be creative with the development of environmental graphics as a part of their image. The letter design, font, and graphics including colors for each tenant sign shall not be limited exclusively to the suggested style shown and tenant may choose to reflect the character of the shop it identifies. Design approval will be based upon capability with regard to the character intended for the overall development. The use of tenant logos are allowed in conjunction with tenant signs and are included in the total allowable sign area calculations.
- 2.6 When lease is renewed, any non-conforming sign must adhere to the new sign criteria.
- 2.7 Shop drawings, materials and paint samples must be supplied

to Landlord for approval. In some instances a partial or full size prototype of the tenant's sign may be required also.

3.0 SIGN TYPES

3.1 The following outline are works to be provided by the tenant and or landlord. Please refer to the Key Plan on each exhibit for sign locations. Specific criteria may apply based on the location of your Tenancy.

3.2 TENANT MONUMENT SIGN

3.3 One (1) 4'-6 1/2" high by 10'-0" wide freestanding monument sign will be positioned per site plan near the primary entrance to the shopping center. The monument sign will bear the plaza address and provide signage area for (1) one halo illuminated anchor tenant per side.

3.4 ANCHOR TENANT
Defined as greater than 100,000 sq.ft of tenant lease space

3.5 Allowed (1) one tenant identification sign and (1) secondary sign on each elevation. Elevations are limited to the primary (front) elevation and secondary (side) elevation.

3.6 Anchor Tenant's total allowable sign area (for primary and secondary signage) is calculated based on one (1) square foot of signage per lineal foot of tenant's frontage of the front elevation. Maximum letter height of Anchor Tenant signs not to exceed 3'-8". Tenant logo limited to 14'-0" maximum height on primary (front) elevation and 11'-0" maximum height on secondary (side) elevation. Secondary signage maximum letter height not to exceed 2'-6". Tenant may divide square footage for each approved elevation as long as the total allowable square footage is not exceeded.

3.7 PICK UP BEACON

3.8 Pick up beacon sign to be internally illuminated with routed push thru copy and graphics. Sign to be 12'-0" high by 1'-0" wide with a 2'-0" wide base.

3.9 SHOP TENANTS
Less than 100,000 sq.ft. of tenant lease space

3.10 WALL SIGNS

3.11 Tenant signs to be centered horizontally on the tenant fascia and not exceed 75% of the horizontal width as approved by landlord. Letter ascenders and descenders are not applicable to letter height calculations.

3.12 Allowed (1) sign on primary (front) elevation. End cap tenants are allowed up to two (2) signs. Primary signs are calculated

based on one (1) square foot of signage per lineal foot of tenant's frontage of the front elevation. All secondary signs shall be limited to one half (1/2) square foot of sign area per one lineal foot of tenant frontage for end cap tenants only.

3.13 Maximum height of Shop Tenant letter height not to exceed 2'-0". Logos or stacked messages or multiple lines of copy will be limited to 2'-6" maximum overall height.

3.14 BLADE SIGNS

3.15 Blade signs to be mounted to canopy underside, centered within walkway. Blade sign to be 3'- 0" wide x 1'- 6" tall. Blade signs to have tenant color branding on white panels and are not to be illuminated.

4.0 BUILDING/TENANT ADDRESS NUMERALS

4.1 Landlord will provide building address numbers and store numbers in standardized font. Five (5) inch tall tenant store address numbers placed above entry doors are to be provided by and maintained by Landlord.

5.0 TENANT WINDOW GRAPHICS

5.1 Tenant window signs limited to tenant name, logo, and hours of operation All tenants are required to have hours of operation displayed.

5.2 Tenant name/hours of operation sign area limited to two (2) sq.ft. overall

5.3 Window signs shall be white premium-quality reverse-cut self-adhesive vinyl applied to second surface of glass adjacent to store entry doors.

5.4 All window graphics are subject to review and approval at Landlord's discretion. Violation of guidelines will require removal of window graphics at tenant's own expense.

5.5 Tenant shall be responsible for maintaining window signs in like-new condition. Upon termination of lease, all window signs must be removed at tenant's expense. Glazing must be returned to original condition. If glazing cannot to returned to original condition, tenant is required to provide replacement at tenant's own expense.

5.6 Electric neon or LED "OPEN" signs, paper, hand-painted holiday signs or temporary signs are strictly prohibited.

6.0 FABRICATION & INSTALLATION
General Fabrication Specifications

6.1 Construct all work to eliminate burrs, dents, cutting edges, and sharp corners.

6.2 Finish welds on exposed surfaces to be imperceptible in the finished work.

6.3 Surfaces which are intended to be flat shall be without dents, bulges, oil canning, gaps, or other physical deformities.

6.4 Except where approved otherwise by Landlord, conceal all fasteners.

6.5 Signage Construction

6.6 Many signs require technical details to address structural and electrical needs. When developing these sign details be sure to include the following details, if applicable:

6.7 All transformers must be concealed within tenant spaces or within architectural metalwork.

6.8 Raceways cannot be exposed. All conduit must be rigid metal and concealed.

6.9 Fasteners and attachment connections should be non-corrosive and concealed from view. Mounting pins and brackets should be as thin as possible.

6.10 Lamp selection and aiming should be carefully considered to reduce glare for pedestrians and provide appropriate accent lighting.

6.11 Exercise care to assure that painted, polished, and plated surfaces are unblemished in the finished work.

7.0 SIGN LIGHTING

7.1 All primary and secondary sign elements must be halo illuminated except for the Target building whose signs will be both halo and externally lit.

7.2 All illuminated signs shall be fabricated, installed, and comply with national / local building and electrical codes and shall bear the U.L. label. Apply all identification labels including U.L. labels inconspicuously. All conductors, transformers, housings, and other equipment shall be concealed and/or incorporated into storefront and/or sign components permitted and must be repaired by the Tenant. To protect the visual environment, all Tenant light fixture brightness and glare shall not exceed the maximum lumens established in this criteria and are subject to approval. Tenant's primary sign, secondary sign (if applicable) shall be circuited (powered) to Tenants panel house and switched separately from other store fixtures. Tenant shall provide a disconnect switch at sign transformer or near electrical junction box.

8.0 PERMITTED SIGN DESIGN

- 8.1 The following construction methods are permitted, other conditions are subject to approval by Landlord:
- 8.2 Reverse channel dimensional halo-lit letter-forms. Refer to letter details, section 1 for construction details
Painted, etched, and polished metals or materials.
- 8.3 Only the “pick up beacon” may be internally illuminated with routed push thru copy and graphics.
- 8.4 Tenants are allowed to use their established font, logo, or logotypes. For any tenant that does not have an established font, they may use the project font, Neutra Display Thin Medium

9.0 TEMPORARY SIGNS

- 9.1 The temporary signage will be allowed for one period up to 60 days maximum for all new tenants during their initial lease period. All temporary signage must be applied to tenant storefront. It can be in the form of a vinyl banner. All temporary signage is subject to landlord approval prior to installation. Maximum dimensions of banner to be 2'-0" tall by 10'-0" wide.

10.0 PROHIBITED SIGNS

- 10.1 No other sign types than those identified in the sign program shall be allowed. The following construction methods are not permitted for exterior signage:
- 10.2 Letters with exposed fastenings and unfinished edges
- 10.3 Paper, cardboard, styrofoam, cloth, stickers, & decals
- 10.4 Signs employing flashing, flickering, rotating or moving lights
- 10.5 Signs painted directly on the storefront sign band / fascia
- 10.6 Sandwich board “A” frame signs or other portable signs.
- 10.7 Signs that include advertising or descriptions of products or services, unless part of DBA tenants.
- 10.8 Signs placed or displayed on vehicles parked primarily for the purpose of displaying the sign.
- 10.9 Internally illuminated box signs.
- 10.10 Signs advertising phone numbers.
- 10.11 Signs employing luminous or day-glow paint.

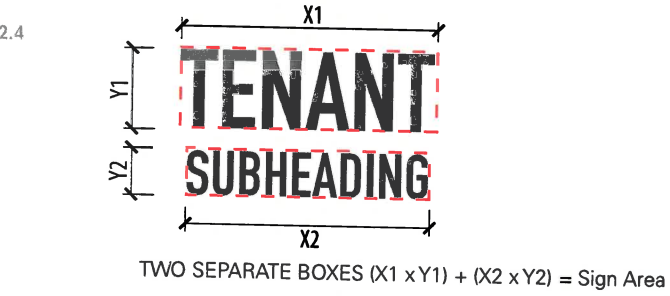
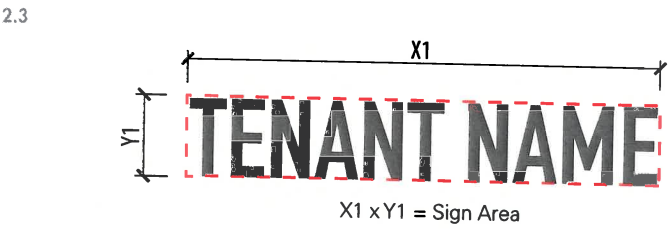
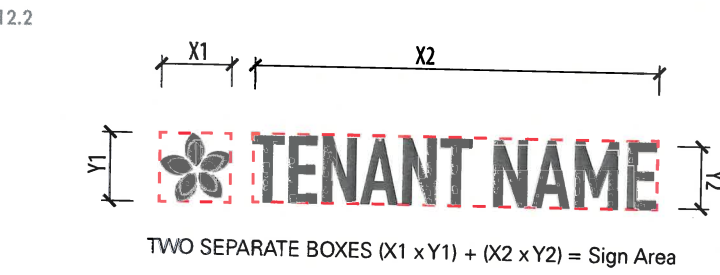
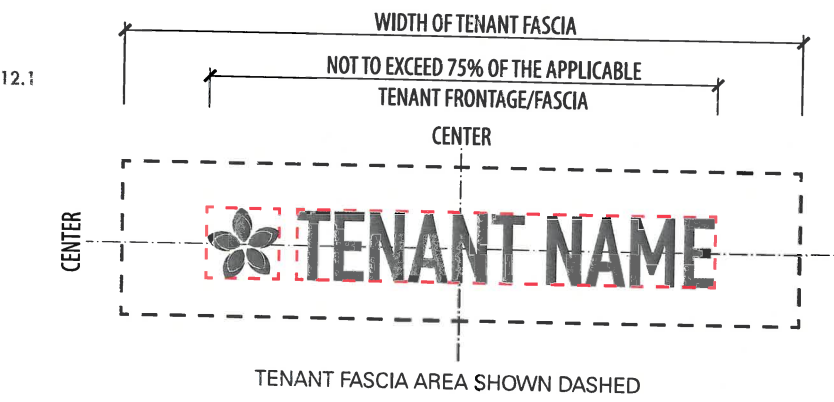
- 10.12 Any temporary signs or advertisements not approved by Landlord and by the City of Goleta.
- 10.13 Generic and neon “Open for Business” signs.
- 10.14 Vacuum-formed or injection molded plastic signs.
- 10.15 Exposed neon except for certain sign types.
- 10.16 Plastic or metal trim cap letter forms.

11.0 TENANT SIGNAGE SUBMISSION

- 11.1 Signs that conform with this overall sign plan do not require Design Review Board approval. City Planning and Environmental Review staff may refer sign applications that do not fully conform to this Overall Sign plan, but do conform to the City of Goleta Sign Regulations to the Design Review Board for approval prior to issuance of a Sign Permit
- 11.2 These signage requirements and approvals process have been reviewed by the City of Goleta. The guidelines are specific to 6861 & 6865 Hollister Ave and may differ from the general requirements for signage in other parts of the City. However, as signage is an integral part of the development of this retail center, these more specific requirements have been adopted. The Landlord must approve any and all signage prior to submittal to the City of Goleta Planning Department. The City will not issue signage permits without original documents indicating the Landlord’s or designee’s approval.
- 11.3 Submit legible digital signage detail drawings to the Landlord and the Environmental Graphic Designer for review and approval. Incomplete submissions to the Landlord will be returned without review. The submission must include the size and dimensions of all signs, letter heights, materials, specified colors and color chips, mounting details of all signs, graphic representation of all signage in relation to the storefronts utilizing approved architectural elevations, including exact location of signs, and any other requirements specified by the City of Goleta Planning Department. The Landlord will retain one (1) complete set on file in his office. Only when the final design sets have been returned with the Landlord’s approval may the tenant apply for City approval. Tenant shall submit plans and other required materials to the City of Goleta Planning Department for sign permit and building permit pursuant to the city’s application processes.
- 11.4 Tenant submits shop drawings (as required by Landlord) to Landlord for approval.
- 11.5 Tenant directs signage to be fabricated and installed only after all required approvals, including shop drawing approvals and other Landlord/Lease required information has been obtained and verified by the Landlord.

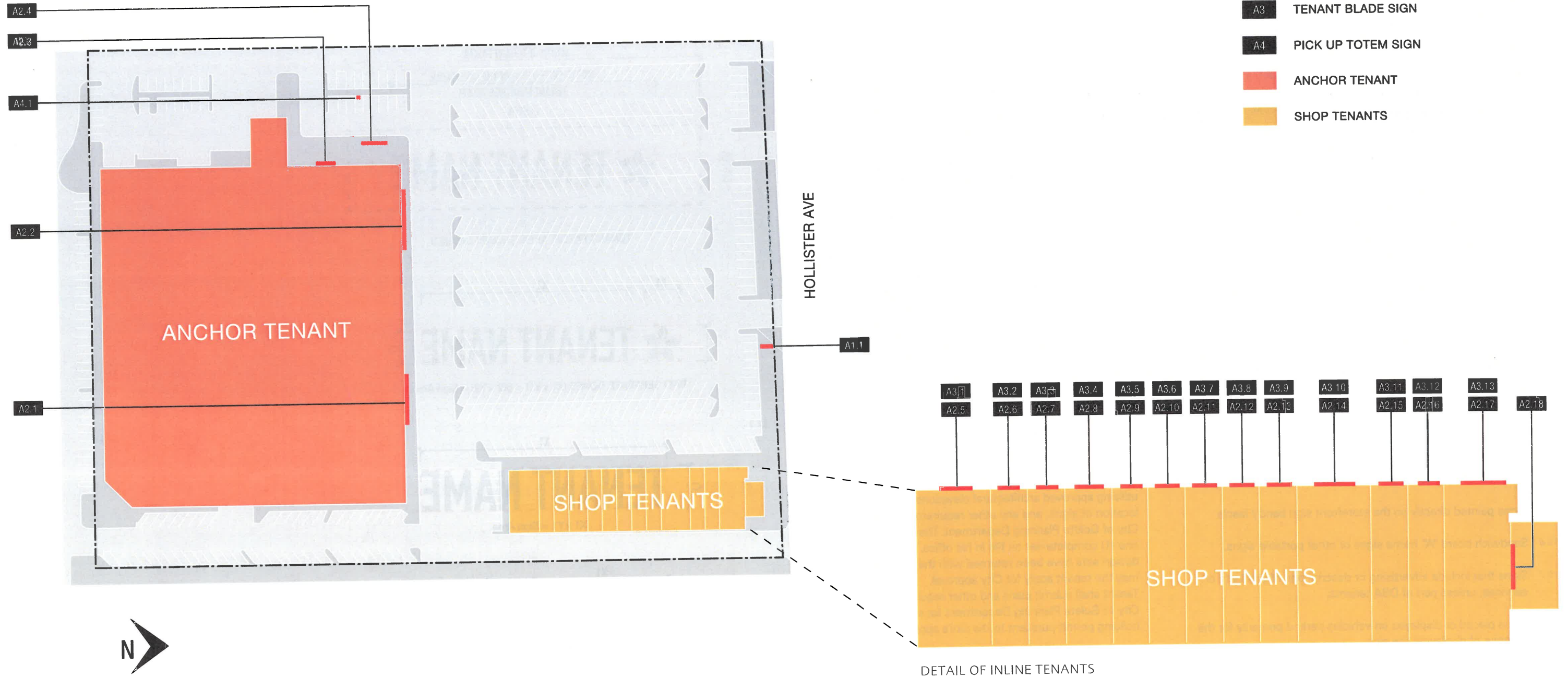
- 11.6 Tenant obtains Landlord and City of Goleta Planning Department’s final approval in an on-site inspection of completed signage. Contact the Landlord and City of Goleta Planning Department upon completion of installation of signage for on-site inspections and final approvals.

12.0 SIGNAGE AREA MEASUREMENT AND PLACEMENT GUIDELINES

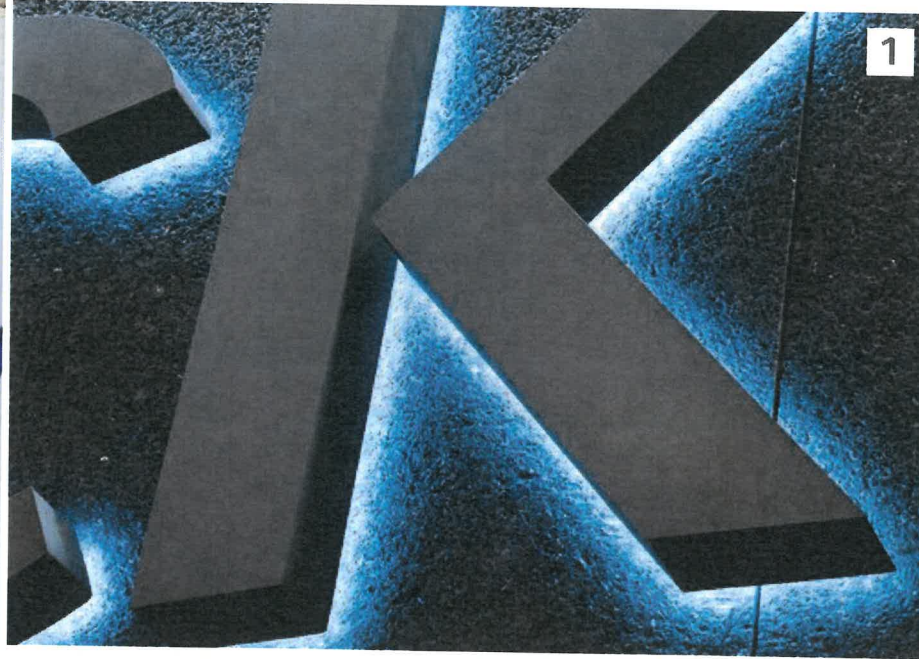


SIGN TYPE KEY PLAN

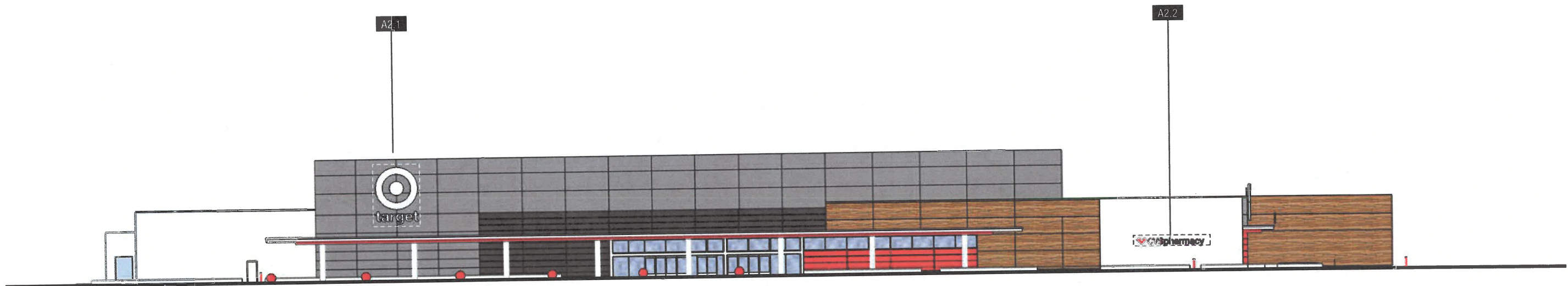
- A1 PRIMARY MONUMENT
- A2 TENANT SIGNAGE (FACADE)
- A3 TENANT BLADE SIGN
- A4 PICK UP TOTEM SIGN
- ANCHOR TENANT
- SHOP TENANTS



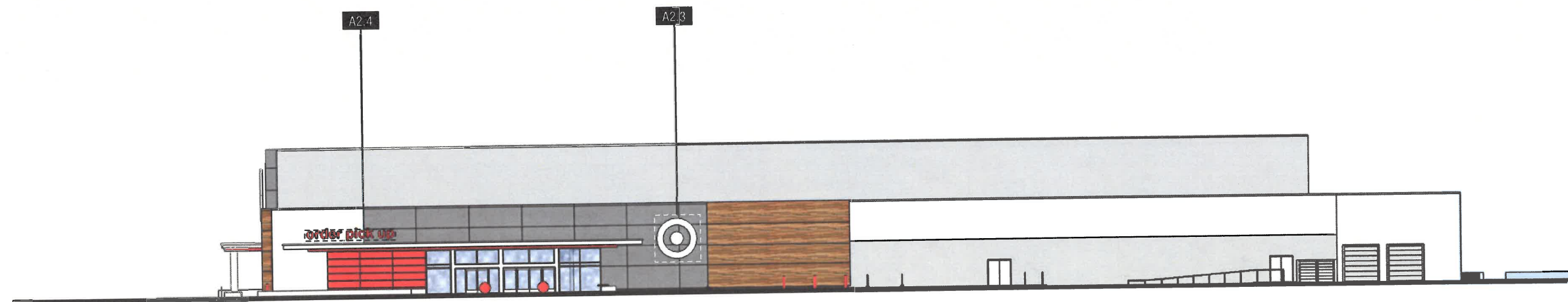
SCALE: NTS



1 REVERSE CHANNEL ILLUMINATION WITH HALO ILLUMINATION



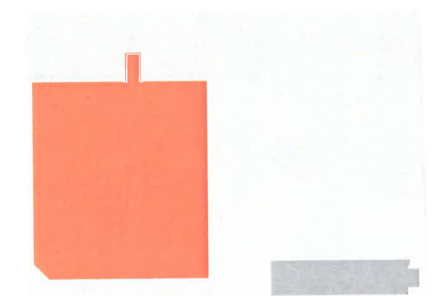
NORTH ELEVATION



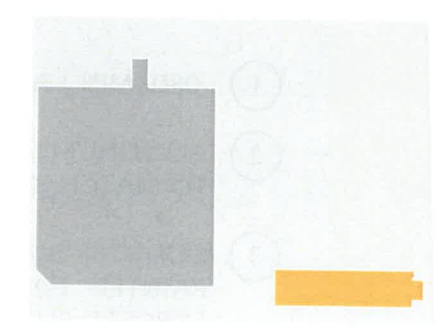
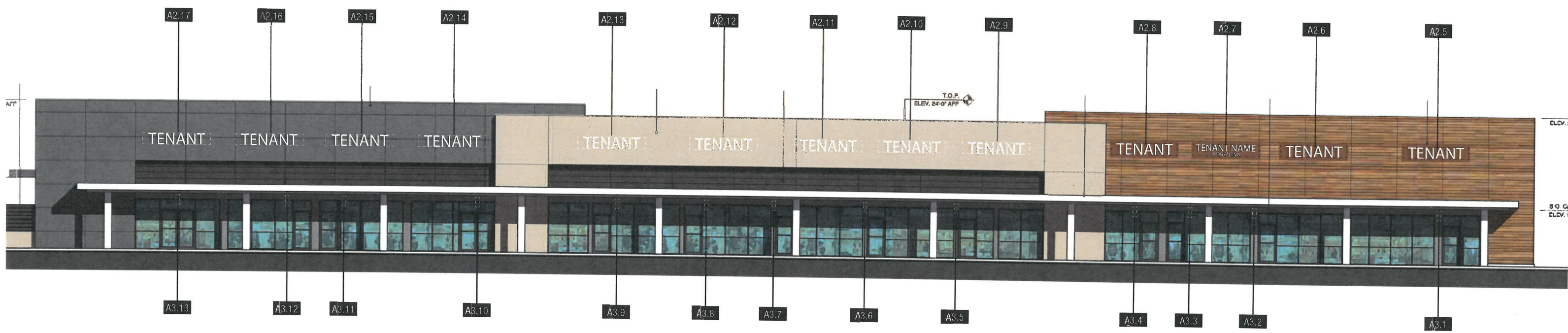
WEST ELEVATION

*REFER TO FEDERAL HEATH SECTION OF MSP FOR ALL DIMENSIONS AND DETAILS

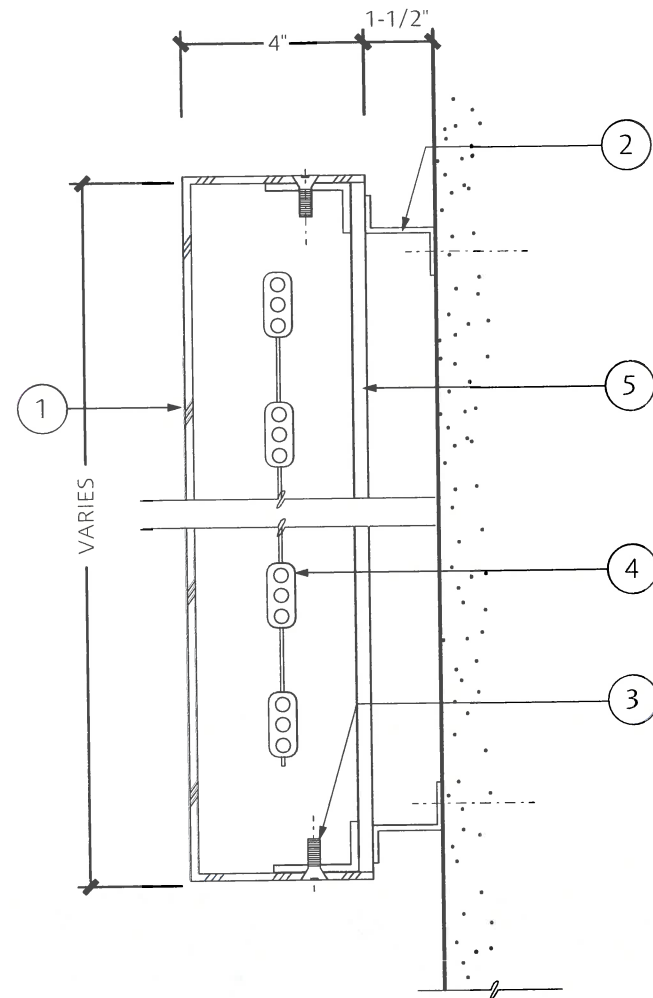
SCALE: 1'=30'-0"



KEY PLAN



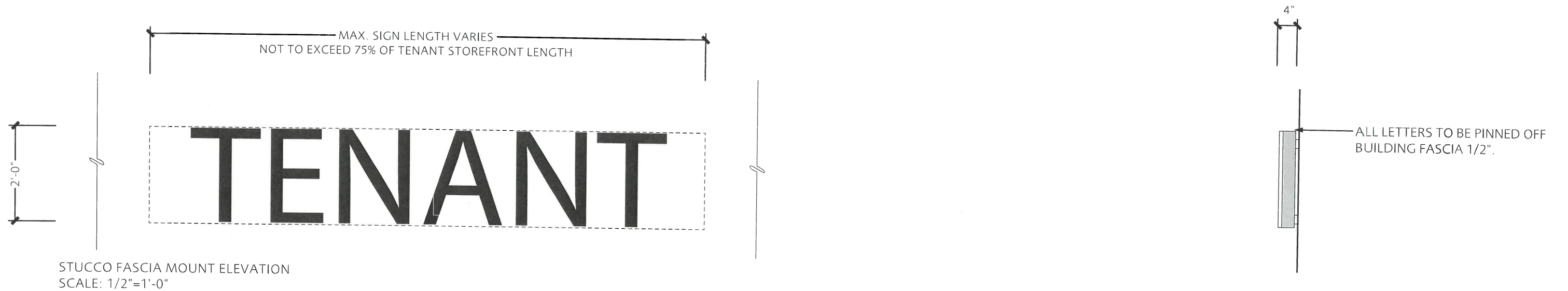
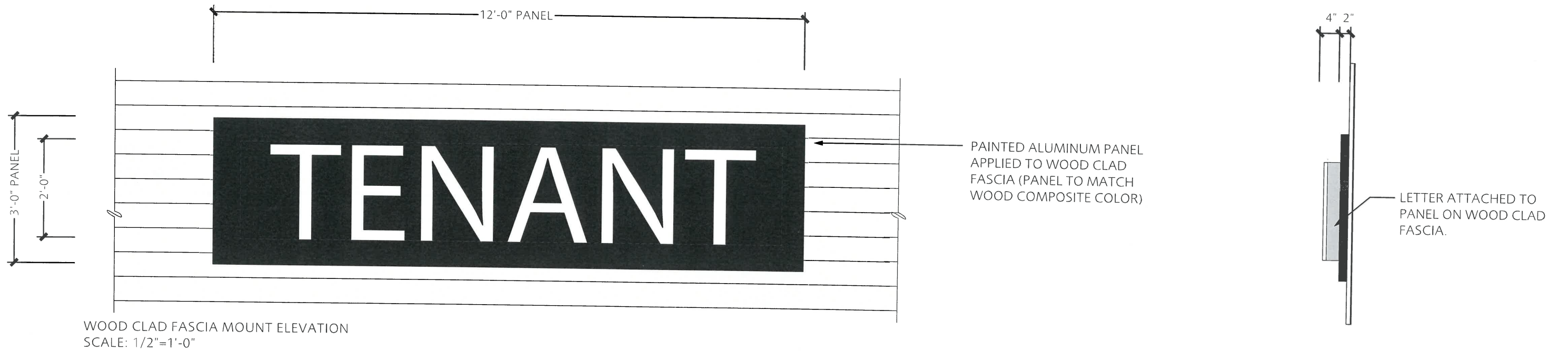
KEY PLAN



1 HALO LIT LETTER
SCALE: 3"=1'-0"

- ① .080 (MIN.) ALUMINUM WITH PAINTED FINISH.
- ② ALUMINUM SPACER OR ALUMINUM CLIP. FINISH TO MATCH FASCIA OR PANEL COLOR.
- ③ COUNTER-SUNK STAINLESS STEEL FASTENERS PAINTED TO MATCH LETTER RETURN COLOR ON EXPOSED SURFACES.

- ④ WHITE LED ILLUMINATION AS REQUIRED FOR SUFFICIENT AND EVEN LIGHTING. NOTE: COLORED LED IS ALLOWED PROVIDING LANDLORD APPROVAL
- ⑤ CLEAR ACRYLIC LETTER BACKER AS REQUIRED (REMOVABLE)





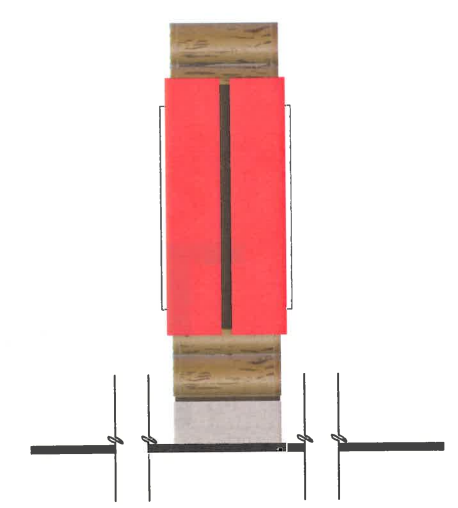
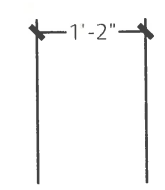
CONTEXT ELEVATION
SCALE: 1/8"=1'-0"



ELEVATION
SCALE: 1/2"=1'-0"

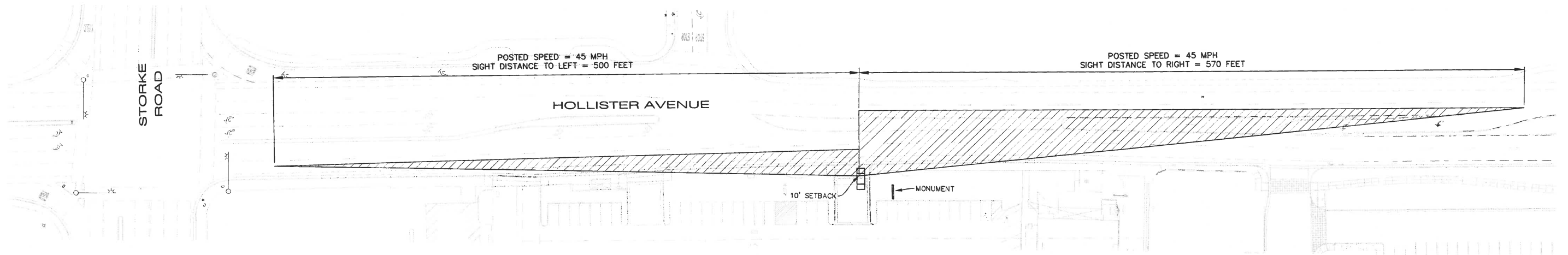
PRIMARY MONUMENT

- FABRICATED ALUMINUM SIGN STRUCTURE WITH EXTERIOR GRADE WOOD COMPOSITE SIDING. TENANT PANELS WITH PAINTED FINISH AND 1-1/2" DEEP FABRICATED TENANT NAMES WITH HALO ILLUMINATION.
- 1" DEEP FABRICATED ALUMINUM ADDRESS NUMERALS WITH PAINTED FINISH
- INTEGRAL COLORED CONCRETE BASE



SIDE VIEW

DESIGN: D.J. CHECKED: DMR
36-ENG SAVE DATE: 11/1/2018 11:52:02 AM PLOT BY: Salin, Julia PLOT DATE: 11/1/2018 12:00:10 PM



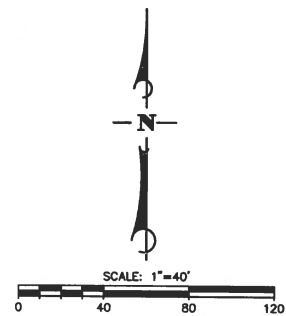
CITY OF GOLETA SIGHT DISTANCE

SIGHT DISTANCE FOR PASSENGER CARS EXITING FROM PRIVATE ACCESSES OR PUBLIC ROADS ONTO FOUR AND SIX LANE ROADS.

SAFE SIGHT DISTANCE - LEFT : 500 FEET AT 45 MPH.

SAFE SIGHT DISTANCE - RIGHT : 570 FEET AT 45 MPH.

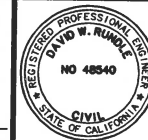
SIGHT DISTANCE REQUIREMENT ARE SATISFIED AT PROJECT DRIVEWAYS.



NO.	DATE	REVISION BLOCK	APPD.

PREPARED FOR:

PREPARED BY:
Stantec
111 East Victoria Street, Santa Barbara, CA 93101
Phone: (805) 963-9532
DAVE RUNDLE 48,540
PROJECT ENGINEER R.C.E. DATE

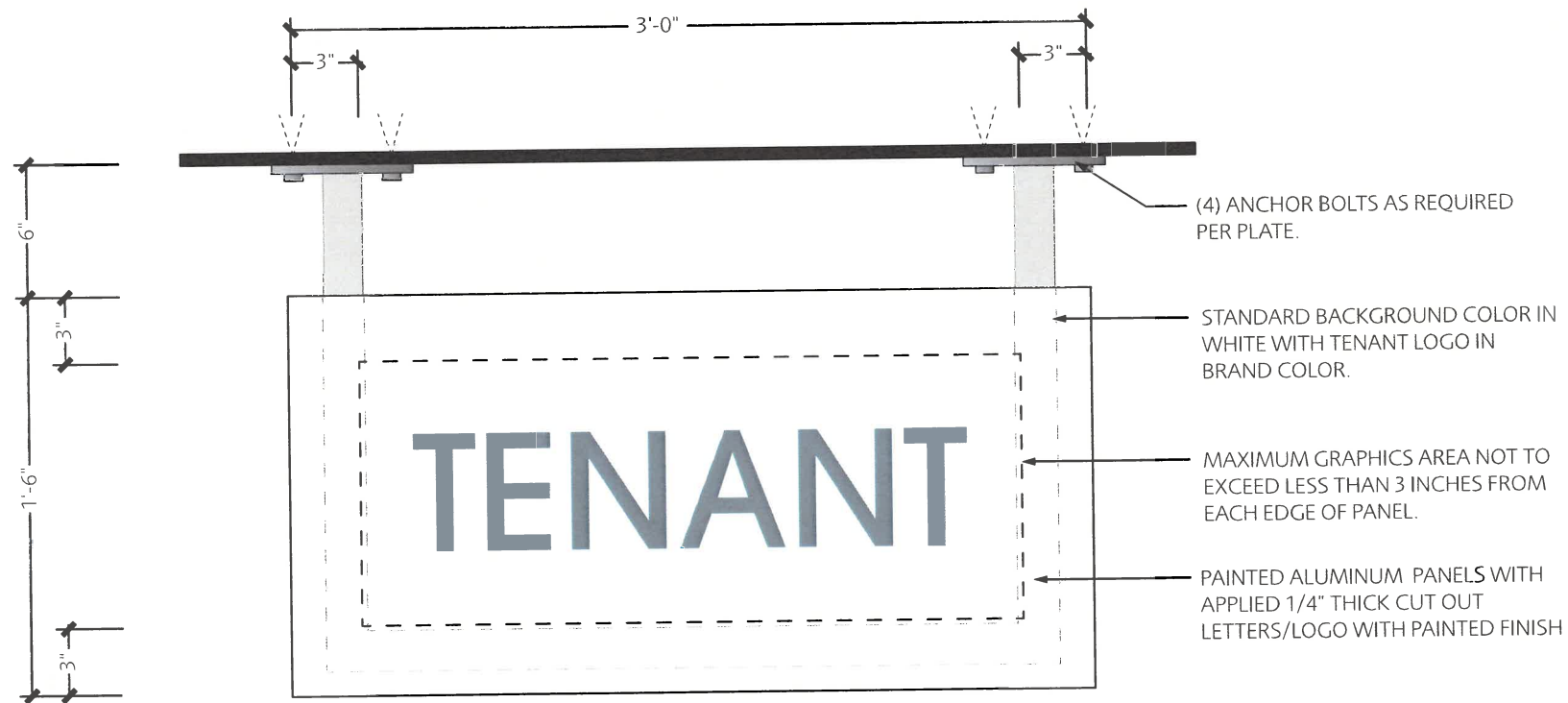


**CORNER SIGHT DISTANCE EXHIBIT
SITE IMPROVEMENT PLANS
PROPOSED TARGET RENOVATION
HOLLISTER & STORKE**
GOLETA, CA

STANTEC PROJECT NO.
2064166300
SHEET
01 OF 01
PLAN DATE
11/01/2018

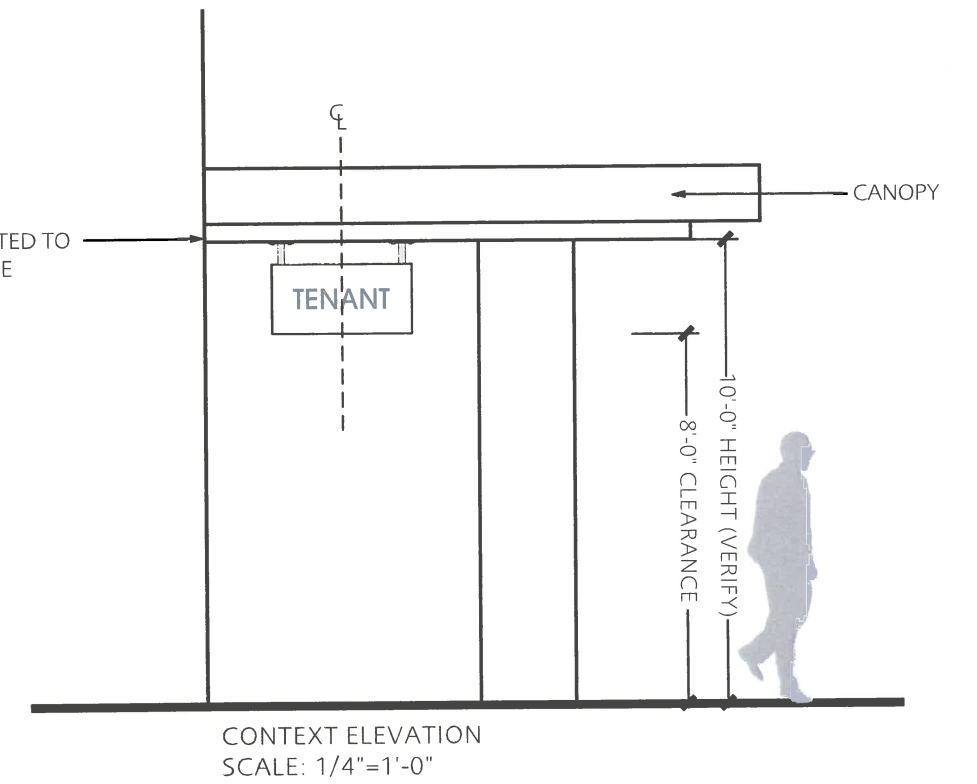


TOP VIEW

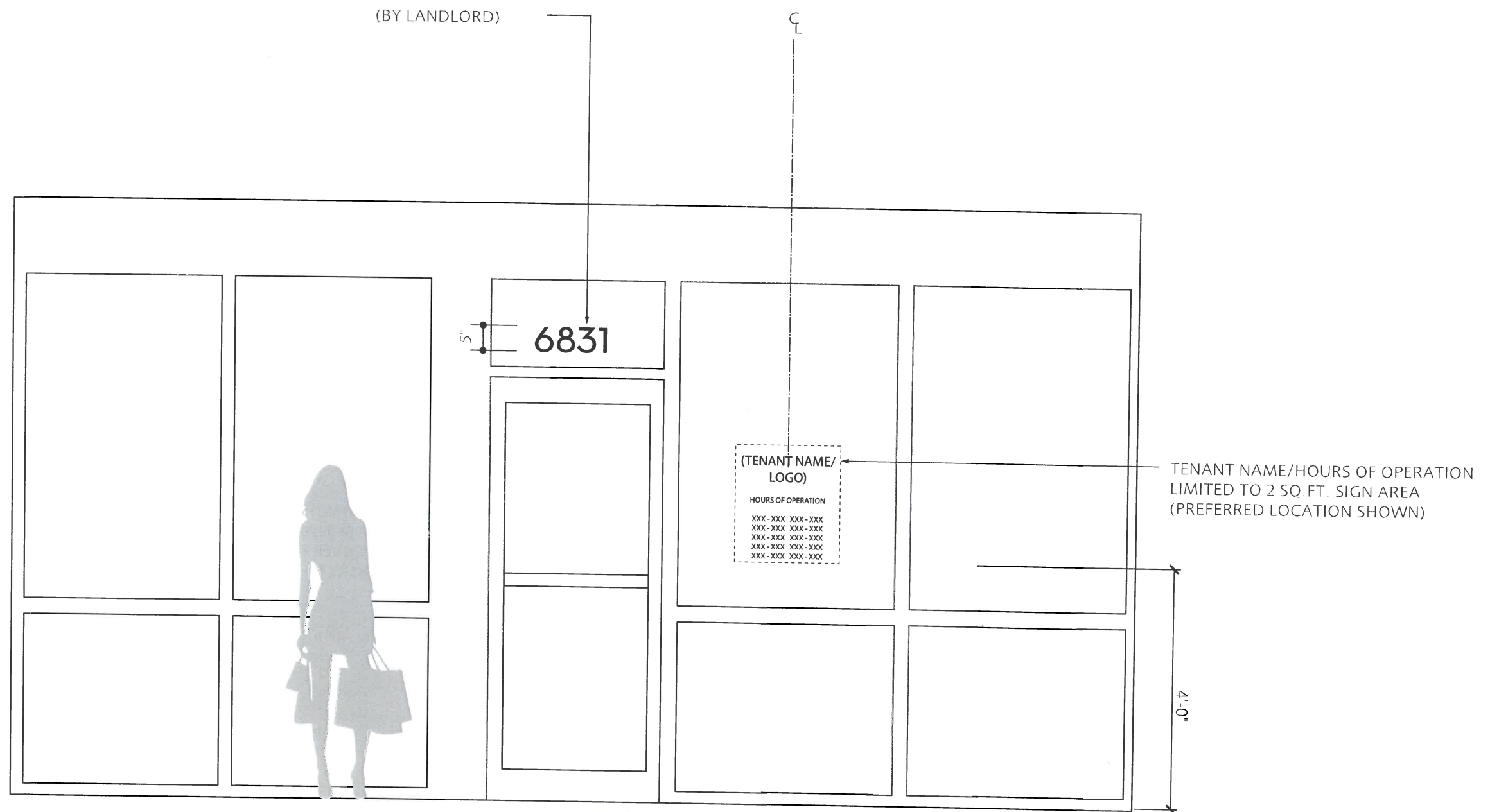


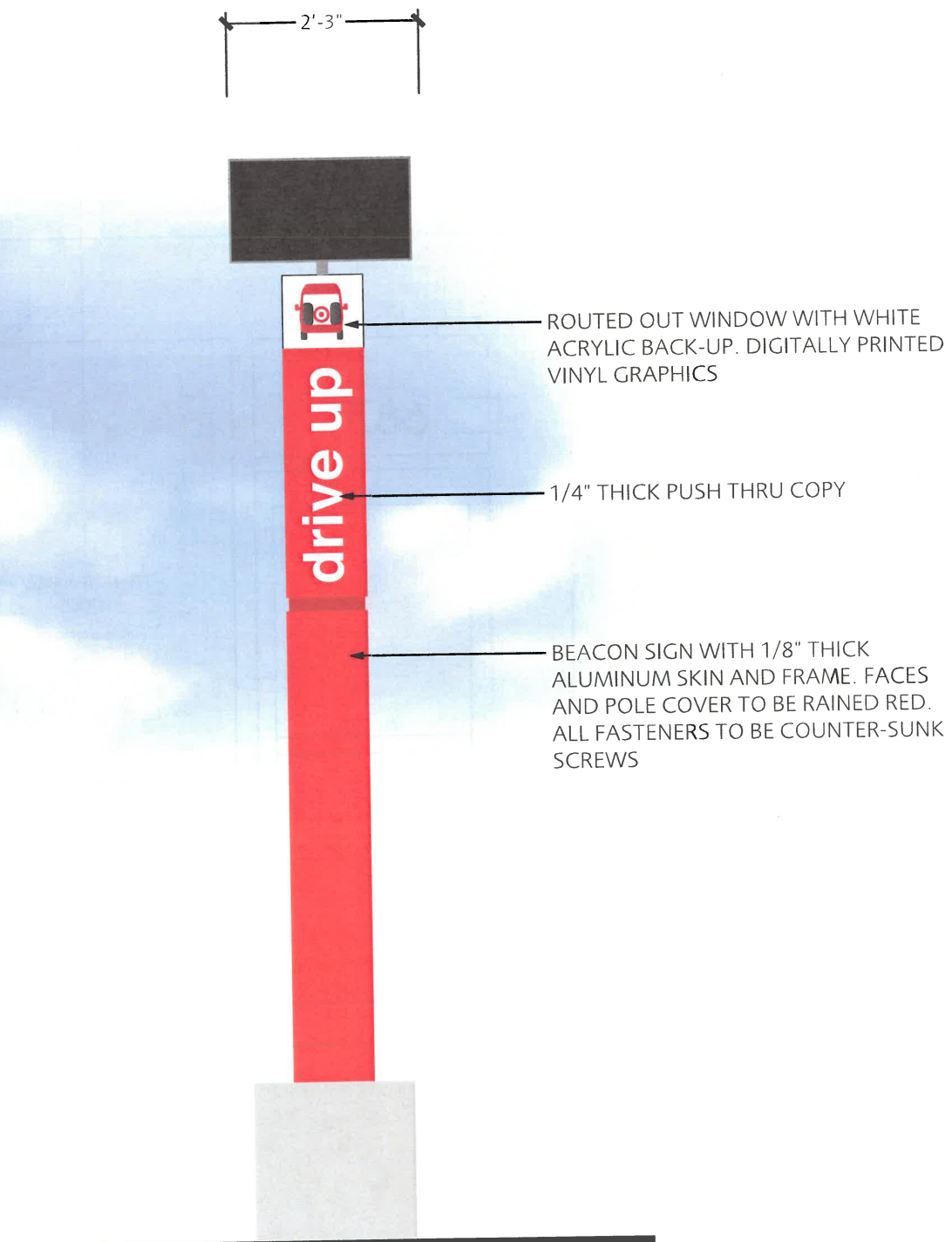
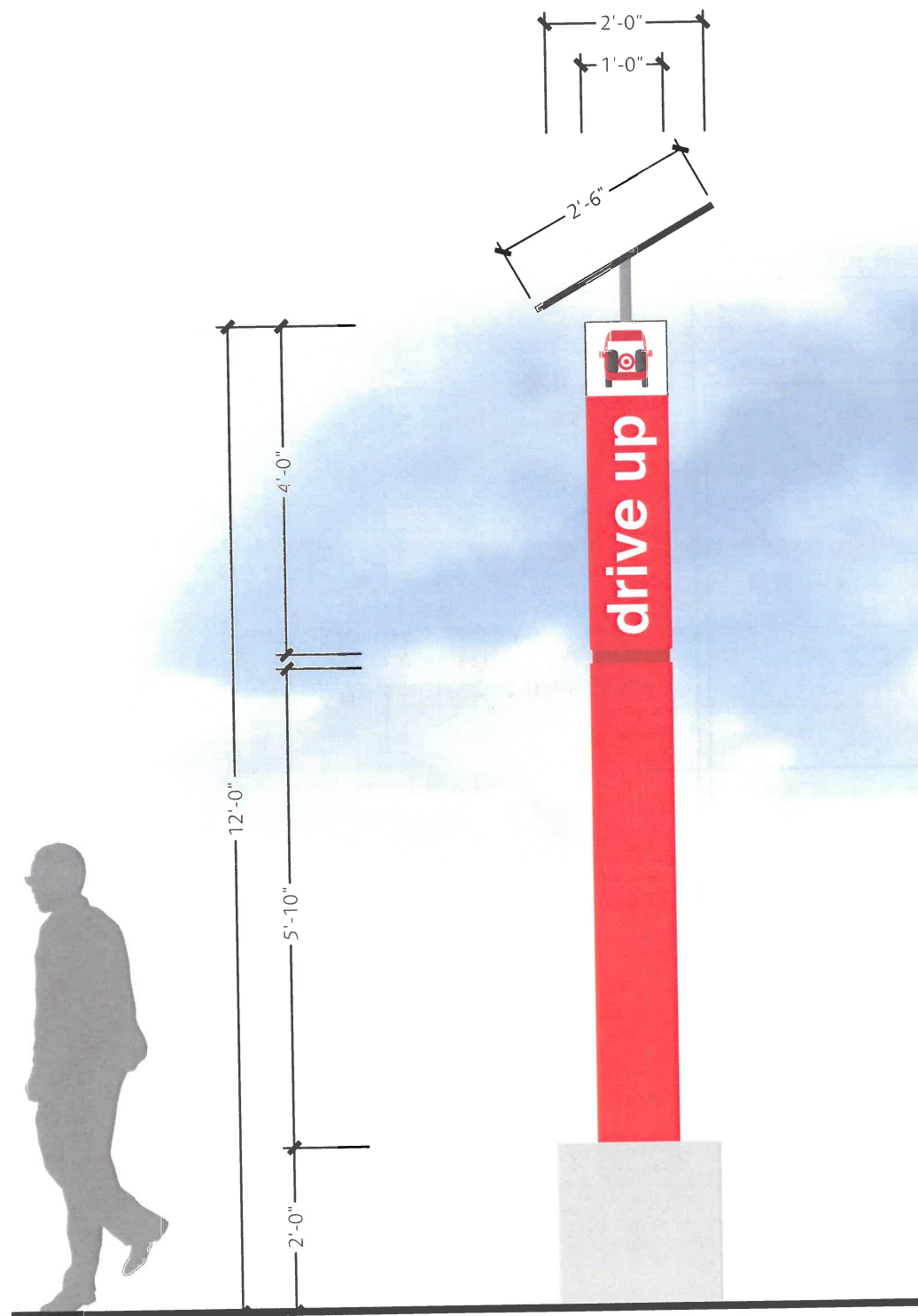
ELEVATION
SCALE: 1-1/2"=1'-0"

BLADE SIGN MOUNTED TO
CANOPY UNDERSIDE



SIDE VIEW





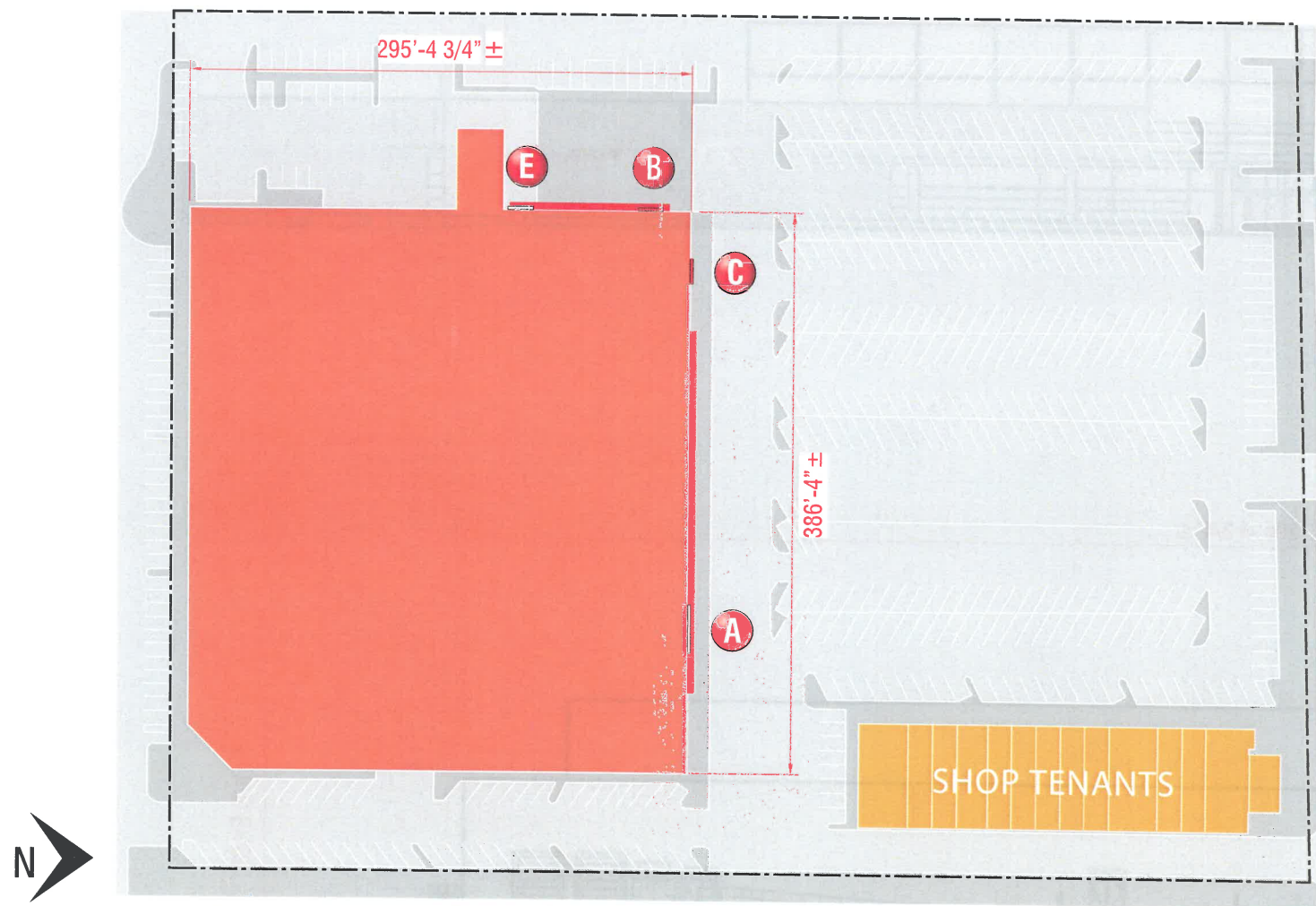
ELEVATION
SCALE: 1/2"=1'-0"

PICK UP BEACON

MerloneGeier
Partners



ROMERO THORSEN DESIGN



SITE PLAN
SCALE: N.T.S.

PROPOSED NEW SIGN SCHEDULE

A	NEW 14'-0" WHITE BULLSEYE LOGO / 3'-7" TARGET LETTERS LS-C W	252.29 SQ.FT.
	QUANTITY: ONE (1)	NORTH ELEVATION
B	NEW 2'-0" RED ORDER PICKUP ON CANOPY (CUSTOM)	73.80 SQ.FT.
	QUANTITY: ONE (1)	WEST ELEVATION
C	NEW IL-30-CL RED CVS PHARMACY LETTERS	57.08 SQ.FT.
	QUANTITY: ONE (1)	NORTH ELEVATION
E	NEW 11'-0" WHITE BULLSEYE LOGO	121.0 SQ.FT.
	QUANTITY: ONE (1)	WEST ELEVATION
		NEW TOTAL BLDG. SIGNAGE: 504.17 SQ. FT.

PROPOSED GROUND SIGN SCHEDULE

F	LC-2 REPLACEMENT FACE - R/C LETTERS HALO LIT	22.0 SQ.FT.
	QUANTITY: TWO (2) FACES REQ'D.	



VISUAL COMMUNICATIONS
www.FederalHeath.com

4602 North Avenue Oceanside, CA 92056
(760) 941-0715 Fax (760) 941-0719

Manufacturing Facilities:
Oceanside, CA - Euless, TX - Jacksonville, TX
Delaware, OH - Racine, WI

Office Locations:
Oceanside, CA - Las Vegas, NV - Laughlin, AZ
Idaho Falls, ID - Euless, TX - Jacksonville, TX - San Antonio, TX
Houston, TX - Corpus Christi, TX - Indianapolis, IN
Louisville, KY - Knoxville, TN - Grafton, WI - Delaware, OH
Willowbrook, IL - Tunica, MS - Atlanta, GA
Tampa, FL - Daytona Beach, FL - Orlando, FL

Building Quality Signage Since 1901

Revisions:
R1 JG 9.19.18 Update with new elev.; Update per markup; add 2nd option sign A
R2 JG 10.31.18 Update per markup; Remove 2nd option
R3 JG 11.1.18 Update sign B to Aluminum backs

R4 VA/JDR 11.19.18 Remove Sign D & re-locate Sign C to existing Sign D placement.

Colors Depicted In This Rendering May Not Match Actual Finished Materials. Refer To Product Samples For Exact Color Match.

Client Approval/Date: _____

Landlord Approval/Date: _____

Account Rep: **Boyd Hippensteil**

Project Manager: **James Tebelman**

Drawn By: **Jake Posadas/JK**

UL Underwriters Laboratories Inc. **nec** ELECTRICAL TO USE U.L. LISTED COMPONENTS AND SHALL MEET ALL N.E.C. STANDARDS
ALL ELECTRICAL SIGNS ARE TO COMPLY WITH U.L. 48 AND ARTICLE 600 OF THE N.E.C. STANDARDS, INCLUDING THE PROPER GROUNDING AND BONDING OF ALL SIGNS.

Project / Location:



Target Store T2872
6865 Hollister Ave .
Goleta, Ca 93117

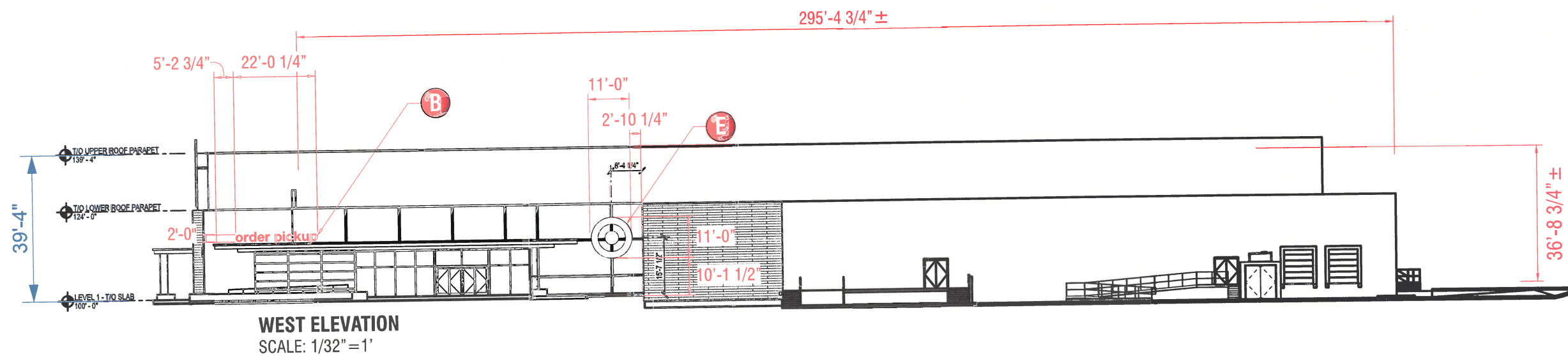
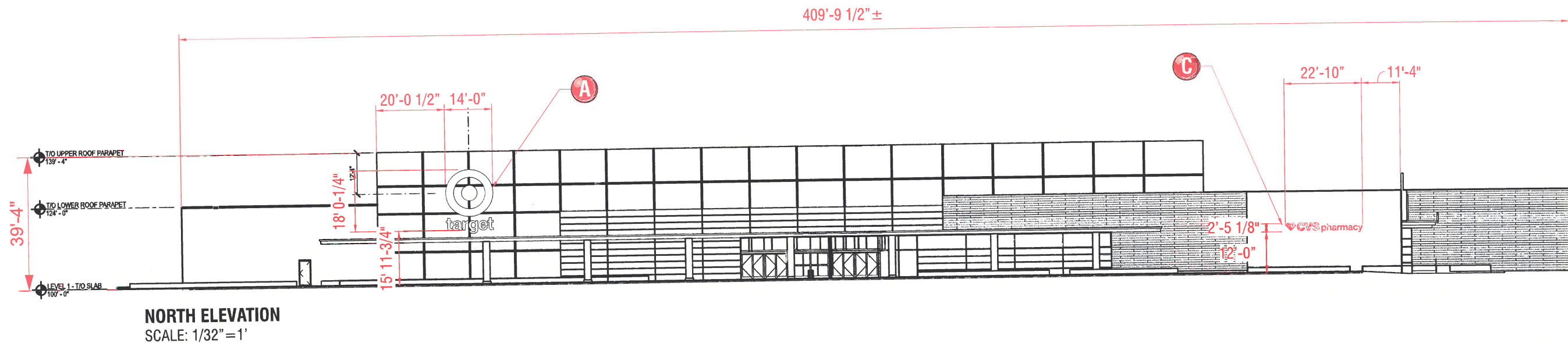
Job Number: **23-50277-10**

Date: **August 9, 2018**

Sheet Number: **1** Of **8**

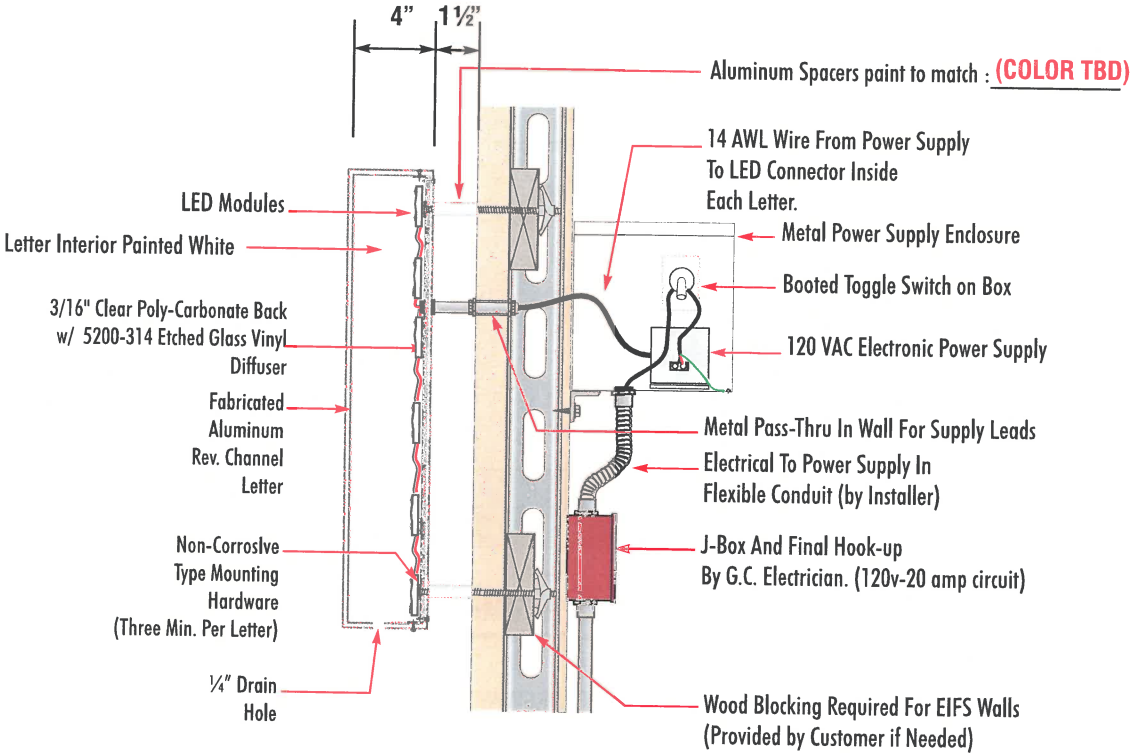
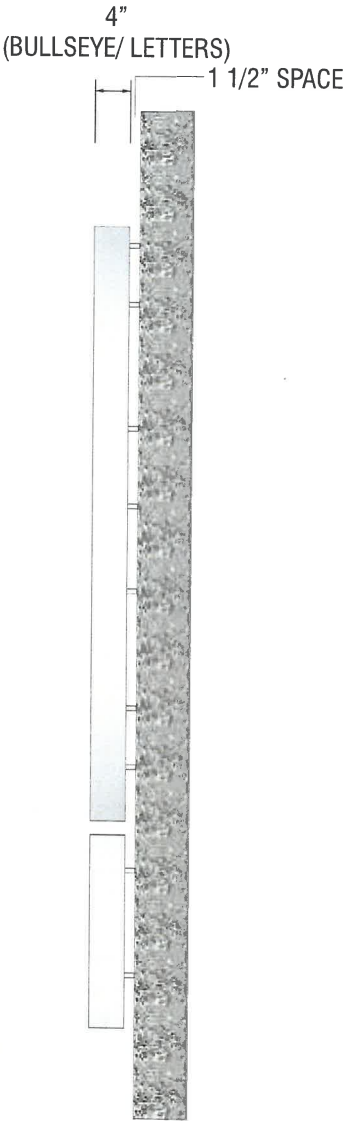
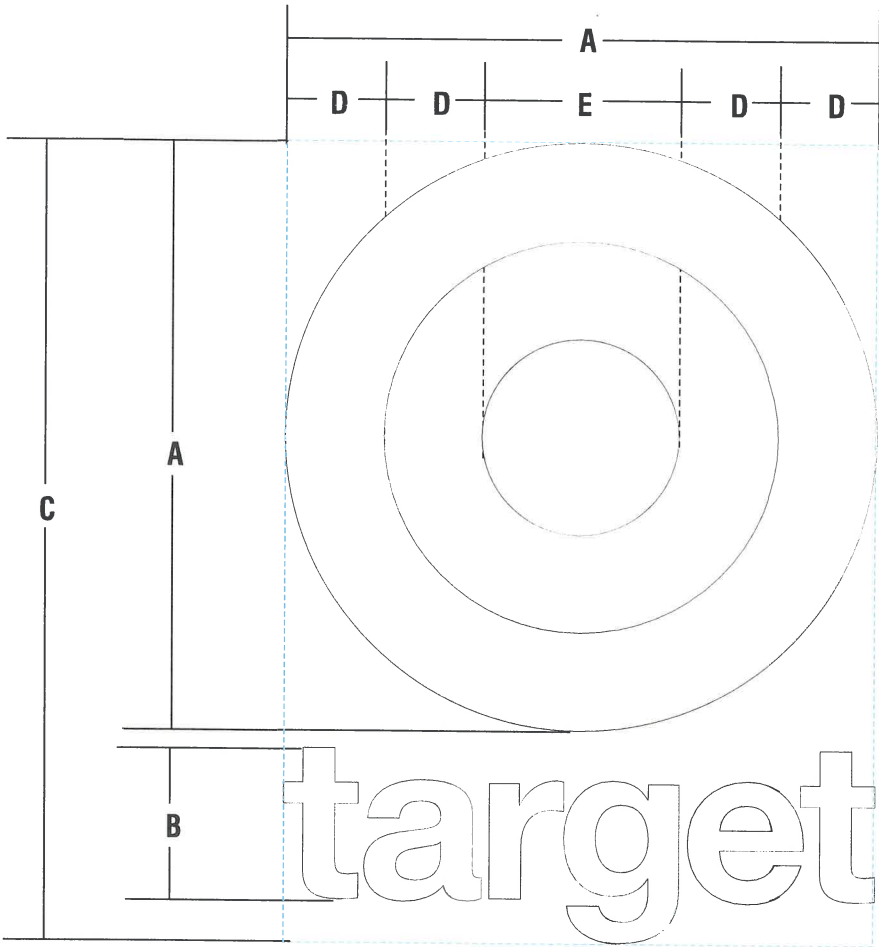
Design Number: **23-50277-10R4**

This original drawing is provided as part of a planned project and is not to be exhibited, copied or reproduced without the written permission of Federal Heath Sign Company, LLC or its authorized agent. ©FHSC



NON-STANDARD

HALO ILLUMINATED



SPACERS TO BE PROVIDED BY FEDERAL HEATH

TYPICAL SECTION DETAIL - L.E.D. HALO ILLUMINATED WALL LETTERS

FABRICATION/DESIGN NOTES:
MINIMUM CAN DEPTH REQUIRED: 3"
MINIMUM LETTER STROKE REQUIRED FOR ILLUMINATION: 1"
N.T.S

A HALO-LIT INT. & EXTERNAL ILLUM. "LOGO & LETTER SET" | LC-S W

SCOPE OF WORK:
MANUFACTURE AND INSTALL CHANNEL LOGO & LETTERS

SIDE VIEW

NOTE: EXTERNAL ILLUMINATION BY OTHERS

SIGN TYPE	A	B	C	D	E	LOGO RETAINER	LETTERS TRIM-CAP	AMPS CIRCUITS	SQ.FT.
LL168/43 LC-W	14'-0"	3'-7 1/4"	18' 0-1/4"	2'-4"	4'-8"	N/A	N/A		252.29

MATERIAL FINISH COLORS

WHITE
Returns

Sloan White
LED
Illumination

ELECTRICAL REQUIREMENTS

Total: 0.0 Amps

(1) 120V 20A Circuit Required.

ALL BRANCH CIRCUITS SHALL BE DEDICATED TO SIGNS (INCLUDING GROUND AND NEUTRAL) AND SHALL NOT BE SHARED WITH OTHER LOADS.

CUSTOMER TO PROVIDE
DEDICATED BRANCH CIRCUITS FOR
SIGNS ONLY PER NEC CODE 600.5

ALL BRANCH CIRCUITS SHALL BE DEDICATED TO SIGNS (INCLUDING GROUND AND NEUTRAL) AND SHALL NOT BE SHARED WITH OTHER LOADS. PROPERLY SIZED GROUND WIRE THAT CAN BE TRACED BACK TO BREAKER PANEL IS REQUIRED.

INSTALLER REQUIREMENTS

ALL MOUNTING HARDWARE, SECONDARY WIRING AND CONDUITS ARE TO BE PROVIDED BY THE INSTALLATION CONTRACTOR. ALL PENETRATIONS IN THE WALL ARE TO BE SEALED WITH SILICONE AND TO BE WATERTIGHT.

ANY DEVIATION FROM FEDERAL HEATH REQUIREMENTS MAY RESULT IN DAMAGE TO OR IMPROPER OPERATION OF SIGNAGE, CAUSING DELAYS AND ADDITIONAL COSTS.

NEW & REMODEL CONSTRUCTION

ADEQUATE BEHIND THE WALL BACKING AND ACCESS IS REQUIRED FOR THE INSTALLATION OF NEW SIGNAGE. CUSTOMER TO FORWARD APPROVED SIGNAGE DRAWINGS TO THE ON SITE CONTACT TO INSURE THAT THE REQUIRED PROVISIONS ARE MADE DURING CONSTRUCTION, PRIOR TO THE SIGN INSTALLATION.

INSTALLER REQUIREMENTS FOR EIFS WALLS

IT IS THE RESPONSIBILITY OF THE INSTALLATION CONTRACTOR TO PROVIDE ANY WALL SPACERS REQUIRED TO KEEP EIFS WALL MATERIAL FROM BEING COMPACTED DURING INSTALLATION OF ANY MOUNTING BOLTS REQUIRED FOR SIGNAGE.

GENERAL NOTE

- INSTALLER SHALL VERIFY WALL CONDITION IN THE FIELD.
- TYPE, SIZE AND NUMBER OF FASTENERS TO BE DETERMINED.
- ALL BOLT HOLES TO BE DRILLED OR PUNCHED.
- ISOLATE ALL ALUMINUM FROM STEEL.



VISUAL COMMUNICATIONS
www.FederalHeath.com

4602 North Avenue Oceanside, CA 92056
(760) 941-0715 Fax (760) 941-0719

Manufacturing Facilities:
Oceanside, CA - Euless, TX - Jacksonville, TX
Delaware, OH - Racine, WI

Office Locations:
Oceanside, CA - Las Vegas, NV - Laughlin, AZ
Idaho Falls, ID - Euless, TX - Jacksonville, TX - San Antonio, TX
Houston, TX - Corpus Christi, TX - Indianapolis, IN
Louisville, KY - Knoxville, TN - Grafton, WI - Delaware, OH
Willowbrook, IL - Tunica, MS - Atlanta, GA
Tampa, FL - Daytona Beach, FL - Orlando, FL

Building Quality Signage Since 1901

Revisions:
R1 JG 9.19.18 Update with new elev.; Update per markup; add 2nd option sign A
R2 JG 10.31.18 Update per markup; Remove 2nd option
R3 JG 11.1.18 Update sign B to Aluminum back

R4 VA/JDR 11.19.18 Remove Sign D & re-locate Sign C to existing Sign D placement.

Colors Depicted In This Rendering May Not Match Actual Finished Materials. Refer To Product Samples For Exact Color Match.

Client Approval/Date: _____

Landlord Approval/Date: _____

Account Rep: Boyd Hippensteil

Project Manager: James Tebelman

Drawn By: Jake Posadas/JK



ALL ELECTRICAL SIGNS ARE TO COMPLY WITH U.L. 48 AND ARTICLE 600 OF THE N.E.C. STANDARDS, INCLUDING THE PROPER GROUNDING AND BONDING OF ALL SIGNS.

Project / Location:



Target Store T2872
6865 Hollister Ave .
Goleta, Ca 93117

Job Number: 23-50277-10

Date: August 9, 2018

Sheet Number: 3 Of 8

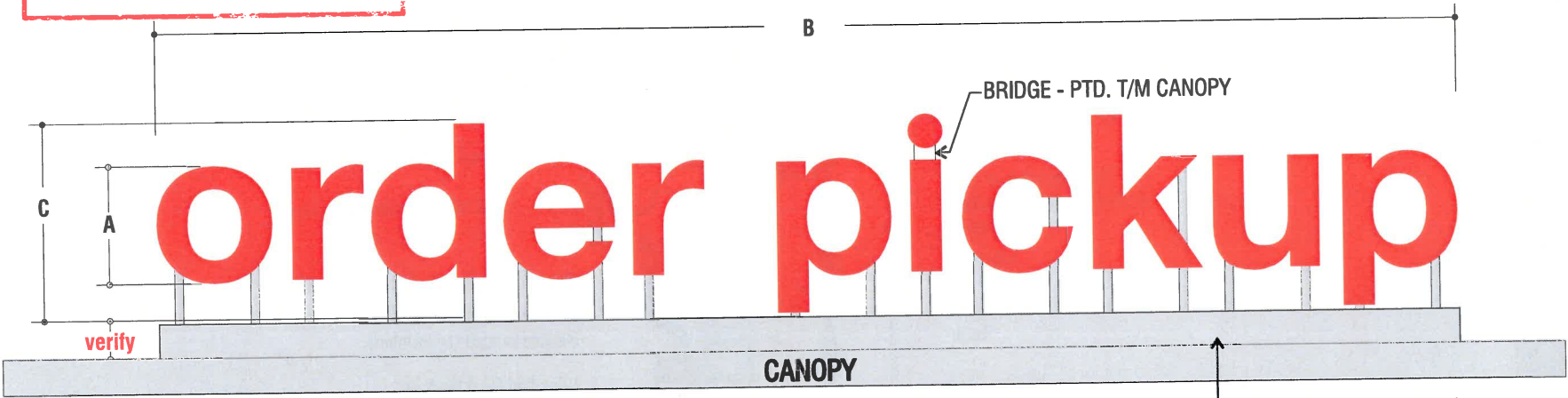
Design Number: 23-50277-10R4

This original drawing is provided as part of a planned project and is not to be exhibited, copied or reproduced without the written permission of Federal Heath Sign Company, LLC or its authorized agent. ©FHSC

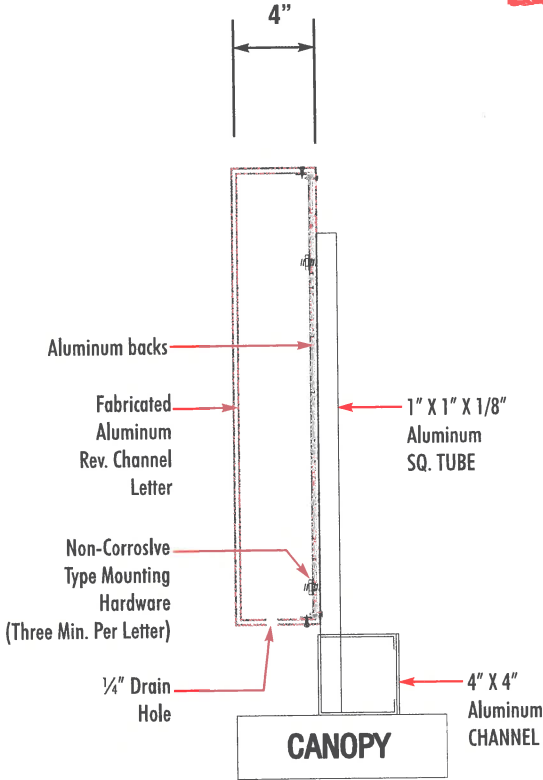
FIELD SURVEY REQUIRED

CANOPY MOUNTING

NON-STANDARD



DRAWINGS ARE FOR DESIGN CONCEPT ONLY..
ENGINEERING REQUIRED TO DETERMINE ACTUAL MFG. REQUIREMENTS



B REVERSE CHANNEL LETTERS | EXTERNALLY ILLUMINATED
SCOPE OF WORK:
MANUFACTURE AND INSTALL CHANNEL LETTERS ON WIREWAY AS SHOWN AND NOTED

NOTE: EXTERNAL ILLUMINATION BY OTHERS

SIGN TYPE	A	B	C	SQ.FT.	QTY
OPU12-WIRE-R	2'-0"	22'-0 1/4"	3'-4 3/4"	73.80	1

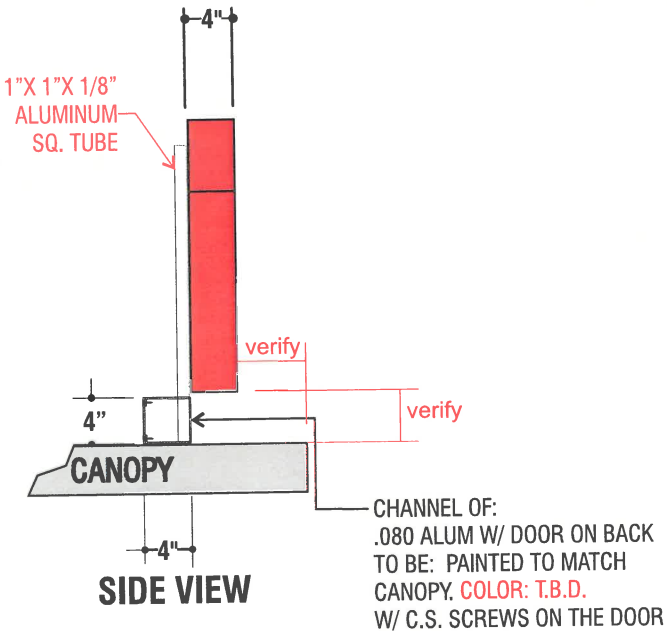
MATERIAL FINISH COLORS

MP# 82074LVG
(FULL GLOSS)

PTD. T/M
Canopy
Color: T.B.D.

Returns Raceway/Supports

NOTE:
THESE LETTERS ARE SEEN FROM ALL VIEWS SO THEY
NEED TO BE FINISHED W/ "MONOLITHIC" FINISH MEANING:
CLEAN & SMOOTH ALL AROUND , BACK & UNDERSIDE
INCLUDED.



NO LABELS IN
PLAIN VIEW

TYPICAL SECTION DETAIL - REVERSE CHANNEL LETTERS

FABRICATION/DESIGN NOTES:
MINIMUM CAN DEPTH REQUIRED: 3"
MINIMUM LETTER STROKE REQUIRED FOR ILLUMINATION: 1"

N.T.S

ELECTRICAL REQUIREMENTS

Total: 0.0 Amps

(1) 120V 20A Circuit Required.

ALL BRANCH CIRCUITS SHALL BE
DEDICATED TO SIGNS (INCLUDING
GROUND AND NEUTRAL) AND SHALL
NOT BE SHARED WITH OTHER LOADS.

**CUSTOMER TO PROVIDE
DEDICATED BRANCH CIRCUITS FOR
SIGNS ONLY PER NEC CODE 600.5**

ALL BRANCH CIRCUITS SHALL BE DEDICATED TO
SIGNS (INCLUDING GROUND AND NEUTRAL) AND
SHALL NOT BE SHARED WITH OTHER LOADS.
PROPERLY SIZED GROUND WIRE THAT CAN BE
TRACED BACK TO BREAKER PANEL IS REQUIRED.

INSTALLER REQUIREMENTS

ALL MOUNTING HARDWARE, SECONDARY
WIRING AND CONDUITS ARE TO BE PROVIDED
BY THE INSTALLATION CONTRACTOR.
ALL PENETRATIONS IN THE WALL ARE TO BE
SEALED WITH SILICONE AND TO BE WATERTIGHT.

ANY DEVIATION FROM FEDERAL HEATH
REQUIREMENTS MAY RESULT IN DAMAGE
TO OR IMPROPER OPERATION OF SIGNAGE,
CAUSING DELAYS AND ADDITIONAL COSTS.

NEW & REMODEL CONSTRUCTION

ADEQUATE BEHIND THE WALL BACKING AND
ACCESS IS REQUIRED FOR THE INSTALLATION
OF NEW SIGNAGE. CUSTOMER TO FORWARD
APPROVED SIGNAGE DRAWINGS TO THE ON
SITE CONTACT TO INSURE THAT THE REQUIRED
PROVISIONS ARE MADE DURING CONSTRUCTION,
PRIOR TO THE SIGN INSTALLATION.

INSTALLER REQUIREMENTS FOR EIFS WALLS

IT IS THE RESPONSIBILITY OF THE INSTALLATION
CONTRACTOR TO PROVIDE ANY WALL SPACERS
REQUIRED TO KEEP EIFS WALL MATERIAL FROM
BEING COMPACTED DURING INSTALLATION OF
ANY MOUNTING BOLTS REQUIRED FOR SIGNAGE.

GENERAL NOTE

- INSTALLER SHALL VERIFY WALL CONDITION IN THE FIELD.
- TYPE, SIZE AND NUMBER OF FASTENERS TO BE DETERMINED.
- ALL BOLT HOLES TO BE DRILLED OR PUNCHED.
- ISOLATE ALL ALUMINUM FROM STEEL.

**FEDERAL
HEATH**

VISUAL COMMUNICATIONS
www.FederalHeath.com

4602 North Avenue Oceanside, CA 92056
(760) 941-0715 Fax (760) 941-0719

Manufacturing Facilities:
Oceanside, CA - Euless, TX - Jacksonville, TX
Delaware, OH - Racine, WI

Office Locations:
Oceanside, CA - Las Vegas, NV - Laughlin, AZ
Idaho Falls, ID - Euless, TX - Jacksonville, TX - San Antonio, TX
Houston, TX - Corpus Christi, TX - Indianapolis, IN
Louisville, KY - Knoxville, TN - Grafton, WI - Delaware, OH
Willowbrook, IL - Tunica, MS - Atlanta, GA
Tampa, FL - Daytona Beach, FL - Orlando, FL

Revisions:
R1 JG 9.19.18 Update with new elev.; Update per markup; add 2nd option sign A
R2 JG 10.31.18 Update per markup; Remove 2nd option
R3 JG 11.1.18 Update sign B to Aluminum backs

R4 VA/JDR 11.19.18 Remove Sign D & re-locate Sign C to existing Sign D placement.

Colors Depicted In This Rendering May Not Match Actual Finished Materials. Refer To Product Samples For Exact Color Match.

Client Approval/Date: _____
Landlord Approval/Date: _____

Account Rep: **Boyd Hippensteil**

Project Manager: **James Tebelman**

Drawn By: **Jake Posadas/JK**

Underwriters Laboratories Inc. **nec** **ELECTRICAL TO USE U.L. LISTED COMPONENTS AND SHALL MEET ALL N.E.C. STANDARDS**

ALL ELECTRICAL SIGNS ARE TO COMPLY WITH U.L. 48 AND ARTICLE 600 OF THE N.E.C. STANDARDS, INCLUDING THE PROPER GROUNDING AND BONDING OF ALL SIGNS.

Project / Location:



Target Store T2872
6865 Hollister Ave .
Goleta, Ca 93117

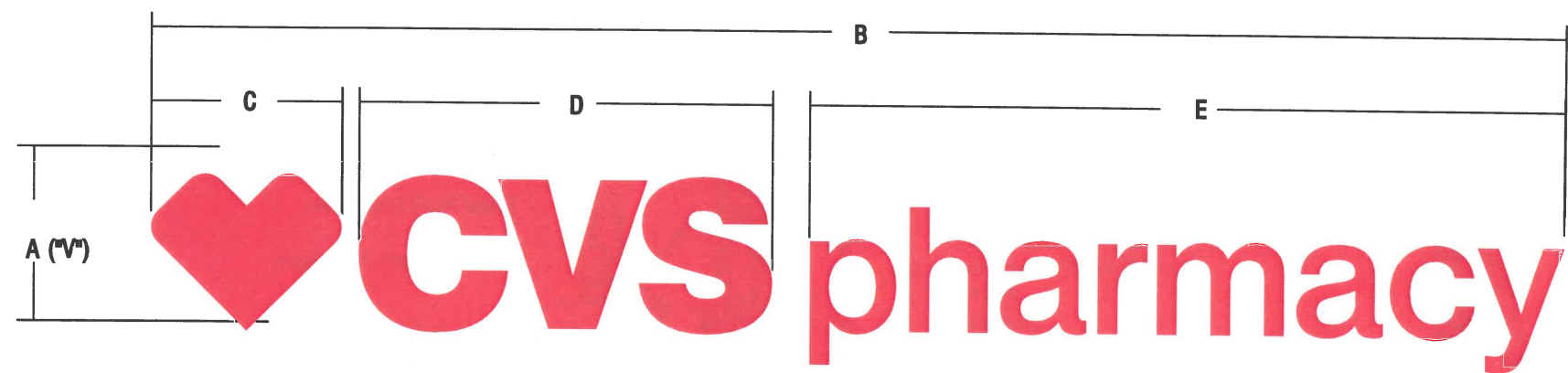
Job Number: **23-50277-10**

Date: **August 9, 2018**

Sheet Number: **4** Of **8**

Design Number: **23-50277-10R4**

This original drawing
is provided as part of a
planned project
and is not to be exhibited,
copied or reproduced
without the written
permission of
Federal Heath Sign
Company, LLC or its
authorized agent. ©FHSC



C **REVERSE CHANNEL LETTERS | EXTERNALLY ILLUMINATED**

SCOPE OF WORK:
MANUFACTURE AND INSTALL CHANNEL LOGO & LETTERS AS SHOWN AND NOTED

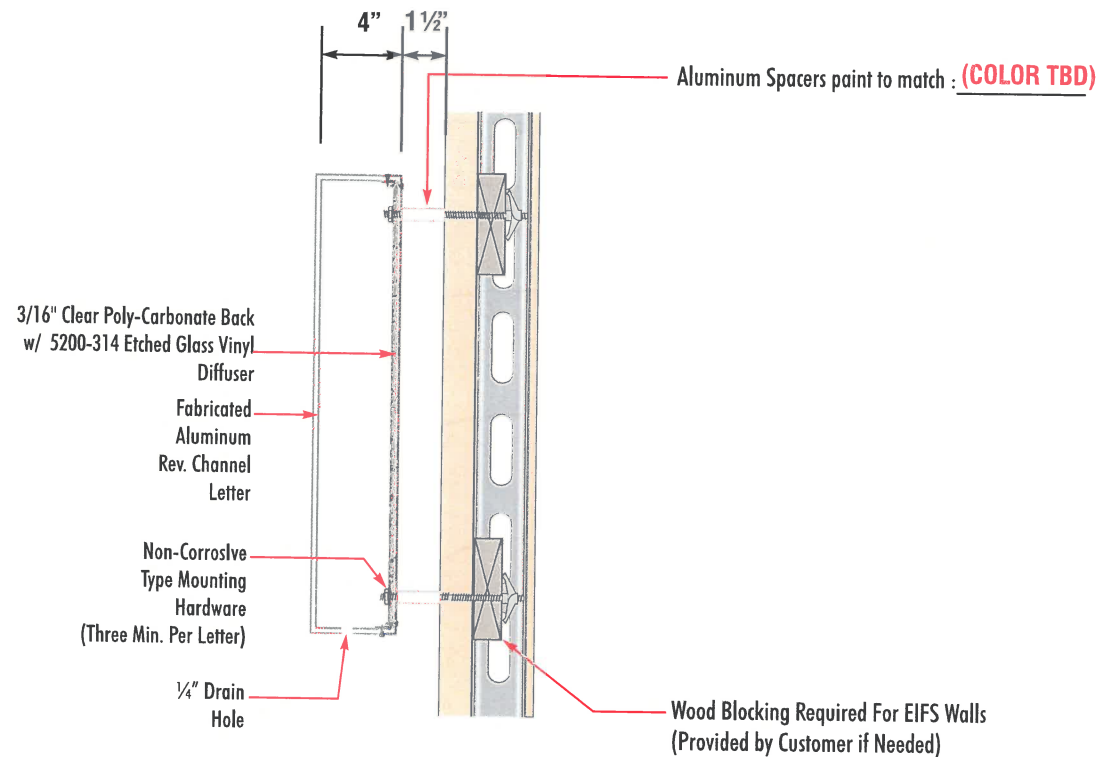
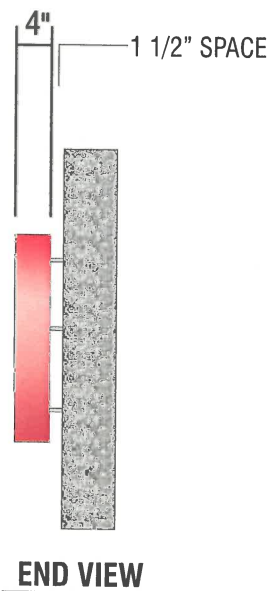
SIGN TYPE	A	B	C	D	E	SQ.FT.	QTY
CVS-30-CL	29 1/8"	22'-10 "	3'-1"	6'-8"	12'-2 1/4"	57.08	1

NOTE: EXTERNAL ILLUMINATION BY OTHERS

MATERIAL FINISH COLORS

MP# 82074LVG
(FULL GLOSS)

Returns



SPACERS TO BE PROVIDED BY FEDERAL HEATH

TYPICAL SECTION DETAIL - REVERSE CHANNEL LETTERS

FABRICATION/DESIGN NOTES:
MINIMUM CAN DEPTH REQUIRED: 3"
MINIMUM LETTER STROKE REQUIRED FOR ILLUMINATION: 1"

N.T.S

ELECTRICAL REQUIREMENTS

Total: 0.0 Amps

(1) 120V 20A Circuit Required.

ALL BRANCH CIRCUITS SHALL BE DEDICATED TO SIGNS (INCLUDING GROUND AND NEUTRAL) AND SHALL NOT BE SHARED WITH OTHER LOADS.

CUSTOMER TO PROVIDE DEDICATED BRANCH CIRCUITS FOR SIGNS ONLY PER NEC CODE 600.5

ALL BRANCH CIRCUITS SHALL BE DEDICATED TO SIGNS (INCLUDING GROUND AND NEUTRAL) AND SHALL NOT BE SHARED WITH OTHER LOADS. PROPERLY SIZED GROUND WIRE THAT CAN BE TRACED BACK TO BREAKER PANEL IS REQUIRED.

INSTALLER REQUIREMENTS

ALL MOUNTING HARDWARE, SECONDARY WIRING AND CONDUITS ARE TO BE PROVIDED BY THE INSTALLATION CONTRACTOR. ALL PENETRATIONS IN THE WALL ARE TO BE SEALED WITH SILICONE AND TO BE WATERTIGHT.

ANY DEVIATION FROM FEDERAL HEATH REQUIREMENTS MAY RESULT IN DAMAGE TO OR IMPROPER OPERATION OF SIGNAGE, CAUSING DELAYS AND ADDITIONAL COSTS.

NEW & REMODEL CONSTRUCTION

ADEQUATE BEHIND THE WALL BACKING AND ACCESS IS REQUIRED FOR THE INSTALLATION OF NEW SIGNAGE. CUSTOMER TO FORWARD APPROVED SIGNAGE DRAWINGS TO THE ON SITE CONTACT TO INSURE THAT THE REQUIRED PROVISIONS ARE MADE DURING CONSTRUCTION, PRIOR TO THE SIGN INSTALLATION.

INSTALLER REQUIREMENTS FOR EIFS WALLS

IT IS THE RESPONSIBILITY OF THE INSTALLATION CONTRACTOR TO PROVIDE ANY WALL SPACERS REQUIRED TO KEEP EIFS WALL MATERIAL FROM BEING COMPACTED DURING INSTALLATION OF ANY MOUNTING BOLTS REQUIRED FOR SIGNAGE.

GENERAL NOTE

- INSTALLER SHALL VERIFY WALL CONDITION IN THE FIELD.
- TYPE, SIZE AND NUMBER OF FASTENERS TO BE DETERMINED.
- ALL BOLT HOLES TO BE DRILLED OR PUNCHED.
- ISOLATE ALL ALUMINUM FROM STEEL.

Revisions:
R1 JG 9.19.18 Update with new close; Update per markup; add 2nd option sign A
R2 JG 10.31.18 Update per markup; Remove 2nd option
R3 JG 11.1.18 Update sign B to Aluminum back

R4 VA/JDR 11.19.18 Remove Sign D & re-locate Sign C to existing Sign D placement.

Colors Depicted In This Rendering May Not Match Actual Finished Materials. Refer To Product Samples For Exact Color Match.

Client Approval/Date: _____

Landlord Approval/Date: _____

Account Rep: Boyd Hippensteil

Project Manager: James Tebelman

Drawn By: Jake Posadas/JK

Underwriters Laboratories Inc. ELECTRICAL TO USE U.L. LISTED COMPONENTS AND SHALL MEET ALL N.E.C. STANDARDS
ALL ELECTRICAL SIGNS ARE TO COMPLY WITH U.L. 48 AND ARTICLE 600 OF THE N.E.C. STANDARDS, INCLUDING THE PROPER GROUNDING AND BONDING OF ALL SIGNS.

Project / Location:



Target Store T2872
6865 Hollister Ave .
Goleta, Ca 93117

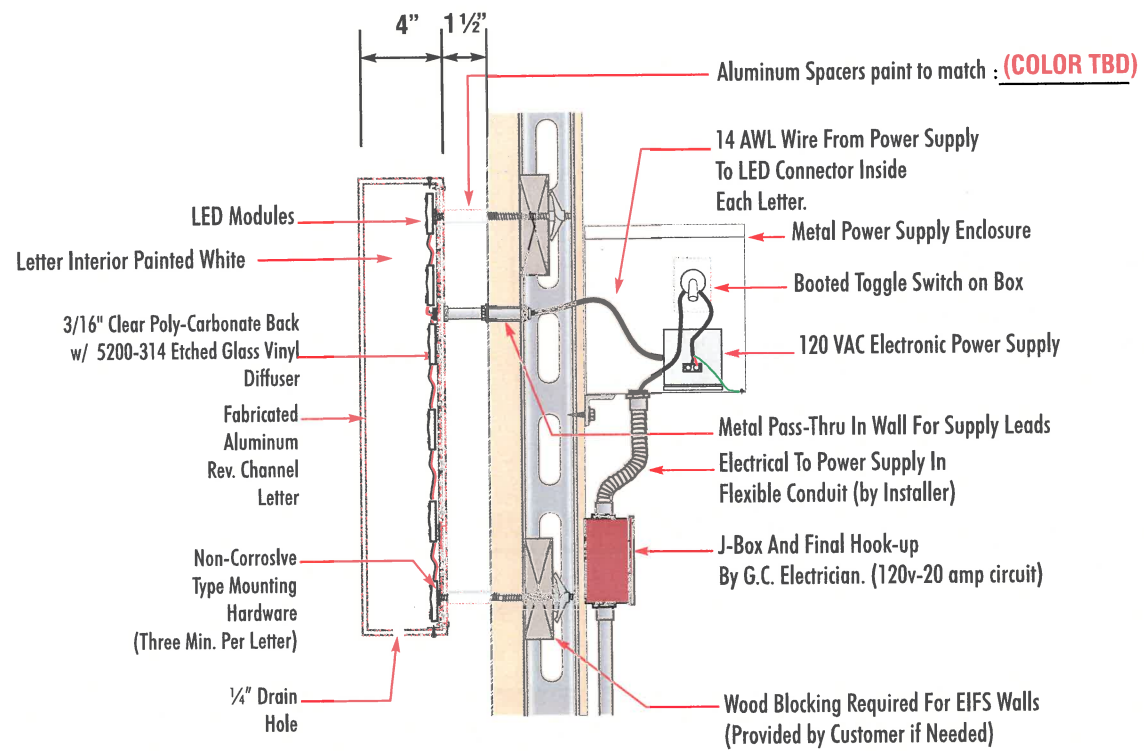
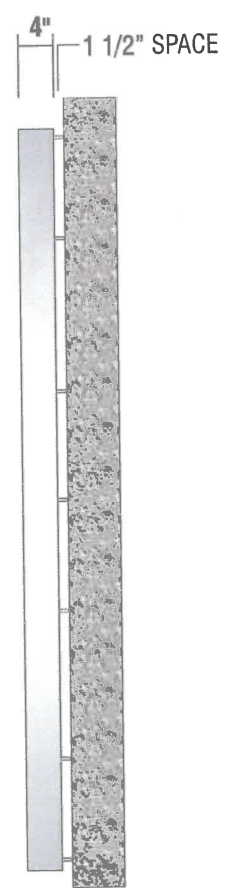
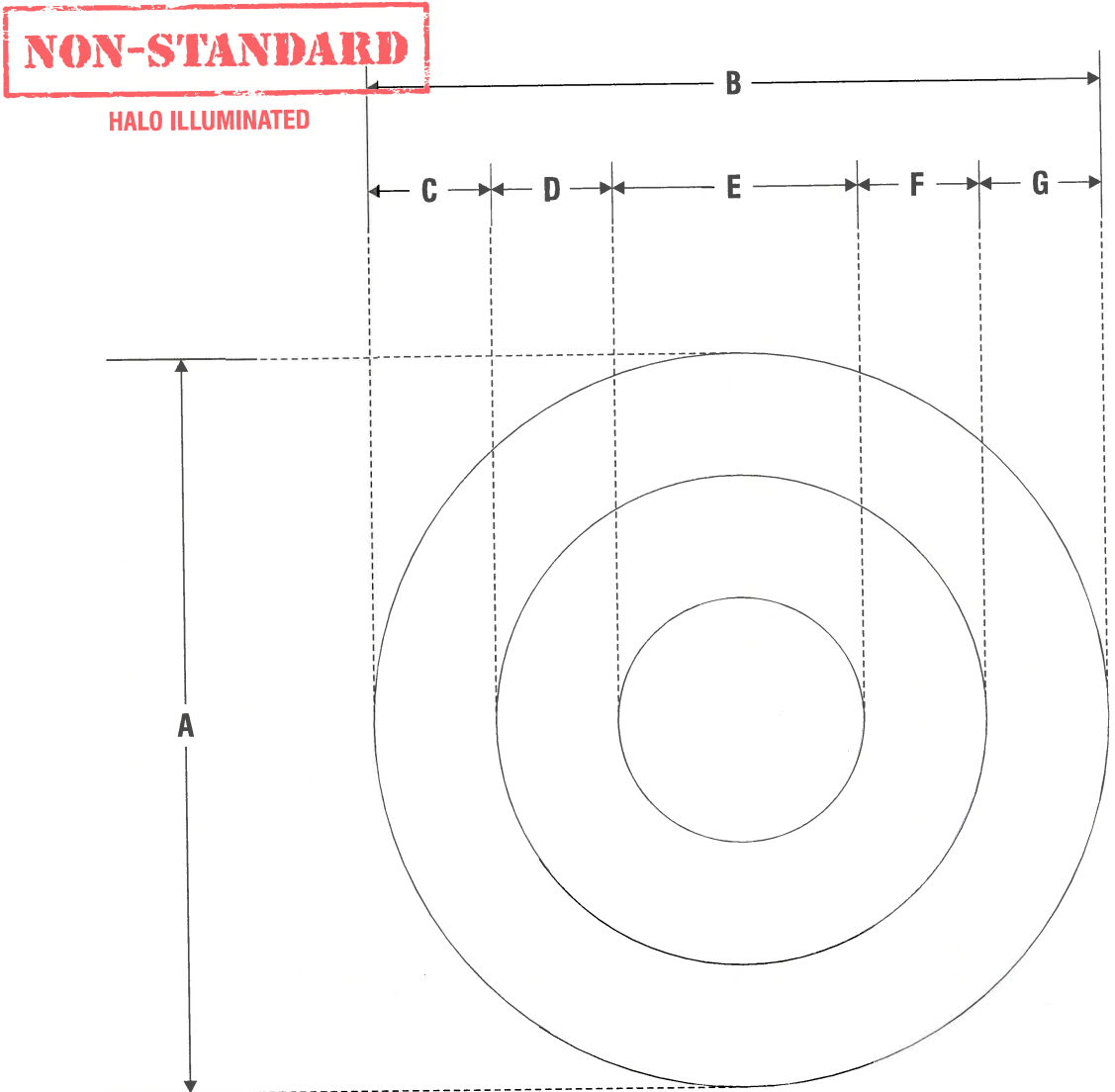
Job Number: 23-50277-10

Date: August 9, 2018

Sheet Number: 5 Of 8

Design Number: 23-50277-10R4

This original drawing is provided as part of a planned project and is not to be exhibited, copied or reproduced without the written permission of Federal Heath Sign Company, LLC or its authorized agent. ©FHSC



TYPICAL SECTION DETAIL - L.E.D. HALO ILLUMINATED WALL LETTERS

FABRICATION/DESIGN NOTES: MINIMUM CAN DEPTH REQUIRED: 3" MINIMUM LETTER STROKE REQUIRED FOR ILLUMINATION: 1" N.T.S

HALO-LIT INT. & EXTERNAL ILLUM. "LOGO" SCOPE OF WORK: MANUFACTURE AND INSTALL CHANNEL LOGO AS SHOWN AND NOTED

NOTE: EXTERNAL ILLUMINATION BY OTHERS

SIGN TYPE	A	B	C	D	E	F	G	RETAINER	SQ.FT.	QTY
132 BULLSEYE-W	11'-0"	11'-0"	1'-10"	1'-10"	3'-8"	1'-10"	1'-10"	1 1/2"	121.0	1

ELECTRICAL REQUIREMENTS

Total: 0.0 Amps

(1) 120V 20A Circuit Required.

ALL BRANCH CIRCUITS SHALL BE DEDICATED TO SIGNS (INCLUDING GROUND AND NEUTRAL) AND SHALL NOT BE SHARED WITH OTHER LOADS.

CUSTOMER TO PROVIDE DEDICATED BRANCH CIRCUITS FOR SIGNS ONLY PER NEC CODE 600.5

ALL BRANCH CIRCUITS SHALL BE DEDICATED TO SIGNS (INCLUDING GROUND AND NEUTRAL) AND SHALL NOT BE SHARED WITH OTHER LOADS. PROPERLY SIZED GROUND WIRE THAT CAN BE TRACED BACK TO BREAKER PANEL IS REQUIRED.

INSTALLER REQUIREMENTS

ALL MOUNTING HARDWARE, SECONDARY WIRING AND CONDUITS ARE TO BE PROVIDED BY THE INSTALLATION CONTRACTOR. ALL PENETRATIONS IN THE WALL ARE TO BE SEALED WITH SILICONE AND TO BE WATERTIGHT.

ANY DEVIATION FROM FEDERAL HEATH REQUIREMENTS MAY RESULT IN DAMAGE TO OR IMPROPER OPERATION OF SIGNAGE, CAUSING DELAYS AND ADDITIONAL COSTS.

NEW & REMODEL CONSTRUCTION

ADEQUATE BEHIND THE WALL BACKING AND ACCESS IS REQUIRED FOR THE INSTALLATION OF NEW SIGNAGE. CUSTOMER TO FORWARD APPROVED SIGNAGE DRAWINGS TO THE ON SITE CONTACT TO INSURE THAT THE REQUIRED PROVISIONS ARE MADE DURING CONSTRUCTION, PRIOR TO THE SIGN INSTALLATION.

INSTALLER REQUIREMENTS FOR EIFS WALLS

IT IS THE RESPONSIBILITY OF THE INSTALLATION CONTRACTOR TO PROVIDE ANY WALL SPACERS REQUIRED TO KEEP EIFS WALL MATERIAL FROM BEING COMPACTED DURING INSTALLATION OF ANY MOUNTING BOLTS REQUIRED FOR SIGNAGE.

GENERAL NOTE

- INSTALLER SHALL VERIFY WALL CONDITION IN THE FIELD.
- TYPE, SIZE AND NUMBER OF FASTENERS TO BE DETERMINED.
- ALL BOLT HOLES TO BE DRILLED OR PUNCHED.
- ISOLATE ALL ALUMINUM FROM STEEL.

FEDERAL HEATH VISUAL COMMUNICATIONS

www.FederalHeath.com

4602 North Avenue Oceanside, CA 92056 (760) 941-0715 Fax (760) 941-0719

Manufacturing Facilities: Oceanside, CA - Eulless, TX - Jacksonville, TX - San Antonio, TX - Houston, TX - Corpus Christi, TX - Indianapolis, IN - Louisville, KY - Knoxville, TN - Grafton, WI - Delaware, OH - Willowbrook, IL - Tunica, MS - Atlanta, GA - Tampa, FL - Daytona Beach, FL - Orlando, FL

Revisions: R1 JG 9.19.18 Update with new elev., Update per markup, add 2nd option sign A R2 JG 10.31.18 Update per markup, Remove 2nd option R3 JG 11.1.18 Update sign B to Aluminum back R4 VA/JDR 11.19.18 Remove Sign D & re-locate Sign C to existing Sign D placement.

Colors Depicted In This Rendering May Not Match Actual Finished Materials. Refer To Product Samples For Exact Color Match.

Client Approval/Date: Landlord Approval/Date:

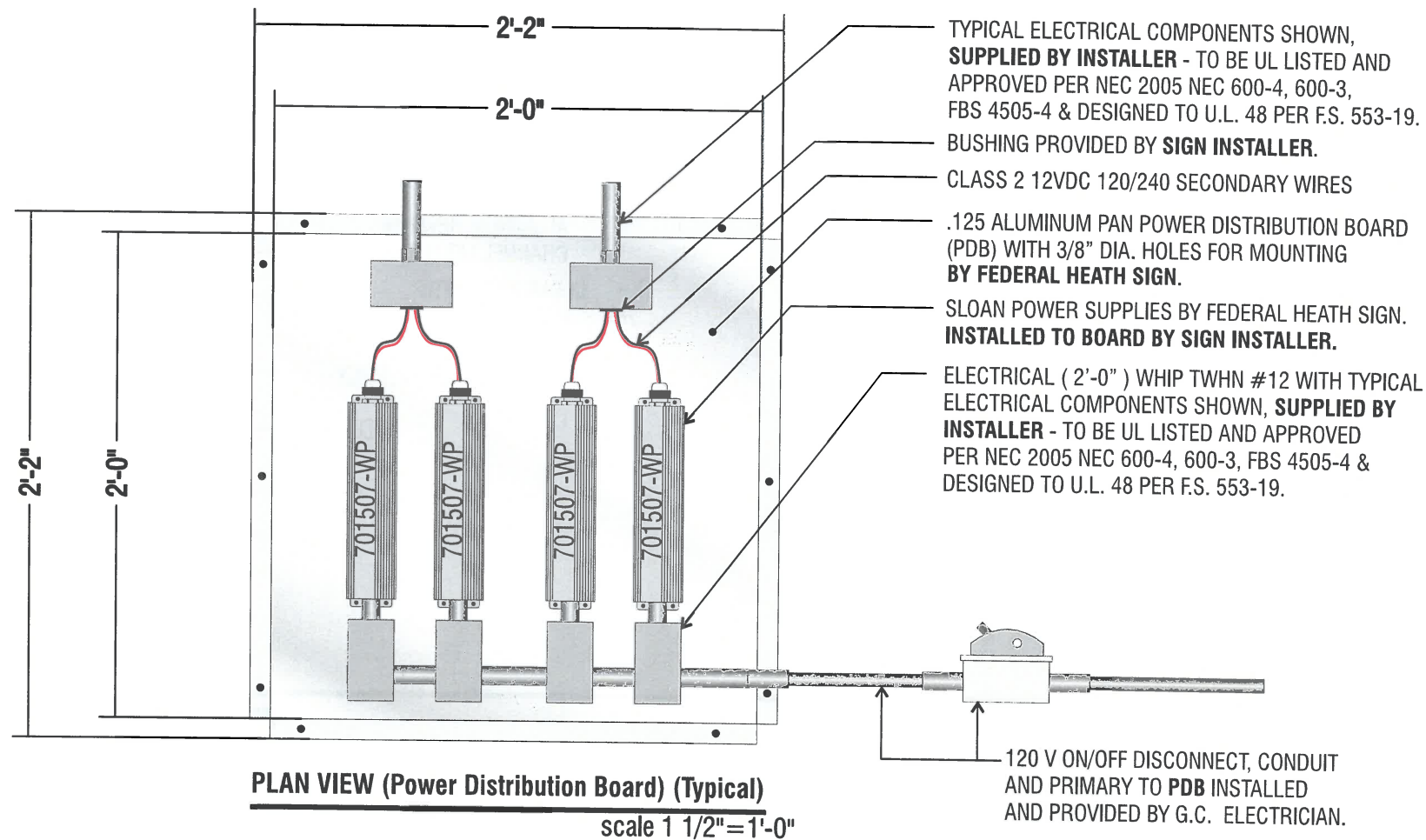
Account Rep: Boyd Hippensteil Project Manager: James Tebelman Drawn By: Jake Posadas/JK

Underwriters Laboratories Inc. n.e.c. ELECTRICAL TO USE U.L. LISTED COMPONENTS AND SHALL MEET ALL N.E.C. STANDARDS ALL ELECTRICAL SIGNS ARE TO COMPLY WITH U.L. 48 AND ARTICLE 600 OF THE N.E.C. STANDARDS, INCLUDING THE PROPER GROUNDING AND BONDING OF ALL SIGNS.

Project / Location: Target Store T2872 6865 Hollister Ave. Goleta, Ca 93117

Job Number: 23-50277-10 Date: August 9, 2018 Sheet Number: 6 Of 8 Design Number: 23-50277-10R4

This original drawing is provided as part of a planned project and is not to be exhibited, copied or reproduced without the written permission of Federal Heath Sign Company, LLC or its authorized agent. ©FHSC



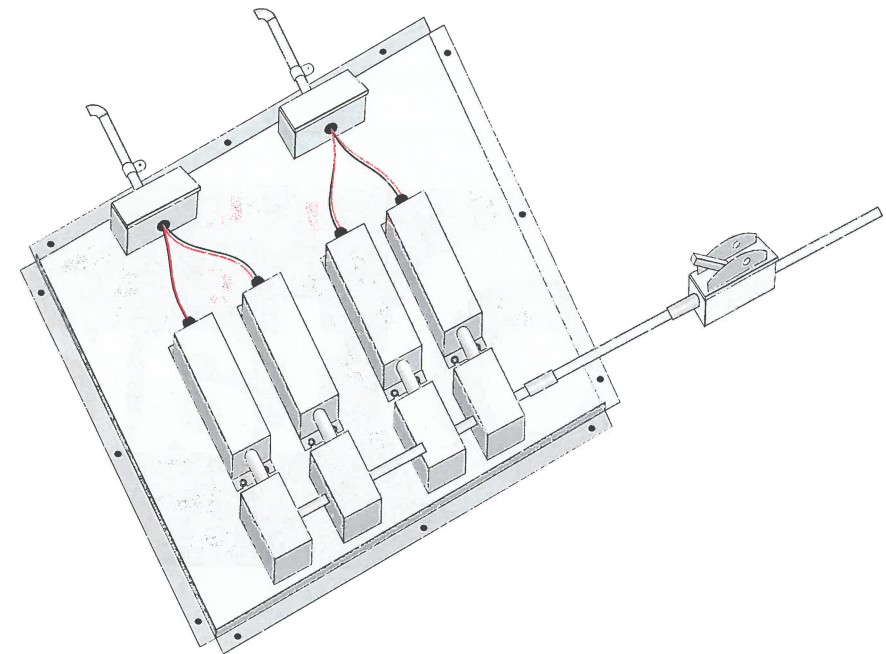
SCOPE OF WORK:

FEDERAL HEATH SIGN TO MANUFACTURE A "POWER DISTRIBUTION BOARD" - (**PDB**).
TO BE .125 ALUMINUM BREAK FORMED PANEL 1/2" DEEP.
PDB TO HAVE 3/8" MOUNTING HOLES PRE- DRILLED.

INSTALLER TO MOUNT LETTERS TO EXTERIOR WALL AND RUN SECONDARY LEADS IN CONDUIT THROUGH WALL INTO A HANDI-BOX.
CONDUIT THROUGH WALL TO BE SEALED FROM WEATHER WITH APPROPRIATE SEALANT SUPPLIED BY INSTALLER.
INSTALLER TO WIRE ALL SECONDARY JUMPS TO CORRESPONDING LETTERS INSIDE BUILDING.
INSTALLER TO WIRE SECONDARY LEADS TO POWER DISTRIBUTION BOARD THROUGH CONDUIT.
INSTALLER TO COORDINATE LOCATION OF POWER DISTRIBUTION BOARD WITH TARGET ON SITE REPRESENTATIVE PER (E-8 SITE ELECTRICAL DRAWINGS).
INSTALLER TO MOUNT **PDB** WHERE REQUIRED.
PDB MAXIMUM DISTANCE FROM SIGNAGE IN ANY ONE DIRECTION IS 150 FEET.
PDB TO BE MOUNTED USING ADEQUATE HARDWARE SUPPLIED BY INSTALLER.

ELECTRICIAN IS TO SUPPLY AND RUN PRIMARY, CONDUIT AND DISCONNECT SWITCH TO **PDB** AND MAKE FINAL CONNECTION.

ALL WORK TO BE DONE PER NEC, UL-48 AND LOCAL CODES.



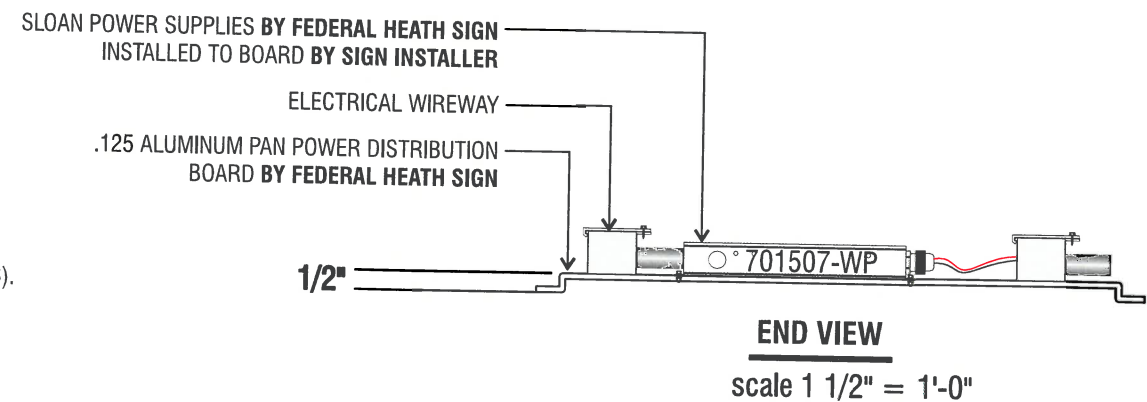
ISOMETERIC VIEW (Power Distribution Board)(Generic)

NOTE:

POWER SUPPLY QUANTITY DEPENDENT ON SIGNAGE REQUIRED.

INSTALLATION REQUIREMENT:

power distribution board (pdb) to be mounted no more than 12" above ceiling to the bottom of the pdb. refer to design drawings for specific location of pdb. pdb to be mounted so that it is easily accessible from a step ladder.



SHIPPING NOTE:

PLEASE SHIP ALUMINUM PANELS WITH POWER SUPPLIES IN THE SAME CONTAINER.



VISUAL COMMUNICATIONS
www.FederalHeath.com

4602 North Avenue Oceanside, CA 92056
(760) 941-0715 Fax (760) 941-0719

Manufacturing Facilities:
Oceanside, CA - Eules, TX - Jacksonville, TX
Delaware, OH - Racine, WI

Office Locations:
Oceanside, CA - Las Vegas, NV - Laughlin, AZ
Idaho Falls, ID - Eules, TX - Jacksonville, TX - San Antonio, TX
Houston, TX - Corpus Christi, TX - Indianapolis, IN
Louisville, KY - Knoxville, TN - Grafton, WI - Delaware, OH
Willowbrook, IL - Tunica, MS - Atlanta, GA
Tampa, FL - Daytona Beach, FL - Orlando, FL

Building Quality Signage Since 1901

Revisions:
R1 JG 9.19.18 Update with new elec; Update per markup; add 2nd option sign A
R2 JG 10.31.18 Update per markup; Remove 2nd option
R3 JG 11.1.18 Update sign B to Aluminum back
R4 VA/JDR 11.19.18 Remove Sign D & re-locate Sign C to existing Sign D placement.

Colors Depicted In This Rendering May Not Match Actual Finished Materials. Refer To Product Samples For Exact Color Match.

Client Approval/Date: _____

Landlord Approval/Date: _____

Account Rep: **Boyd Hippensteil**

Project Manager: **James Tebelman**

Drawn By: **Jake Posadas/JK**

Underwriters Laboratories Inc. **ELECTRICAL TO USE U.L. LISTED COMPONENTS AND SHALL MEET ALL N.E.C. STANDARDS**
ALL ELECTRICAL SIGNS ARE TO COMPLY WITH U.L. 48 AND ARTICLE 600 OF THE N.E.C. STANDARDS, INCLUDING THE PROPER GROUNDING AND BONDING OF ALL SIGNS.

Project / Location:



Target Store T2872
6865 Hollister Ave.
Goleta, Ca 93117

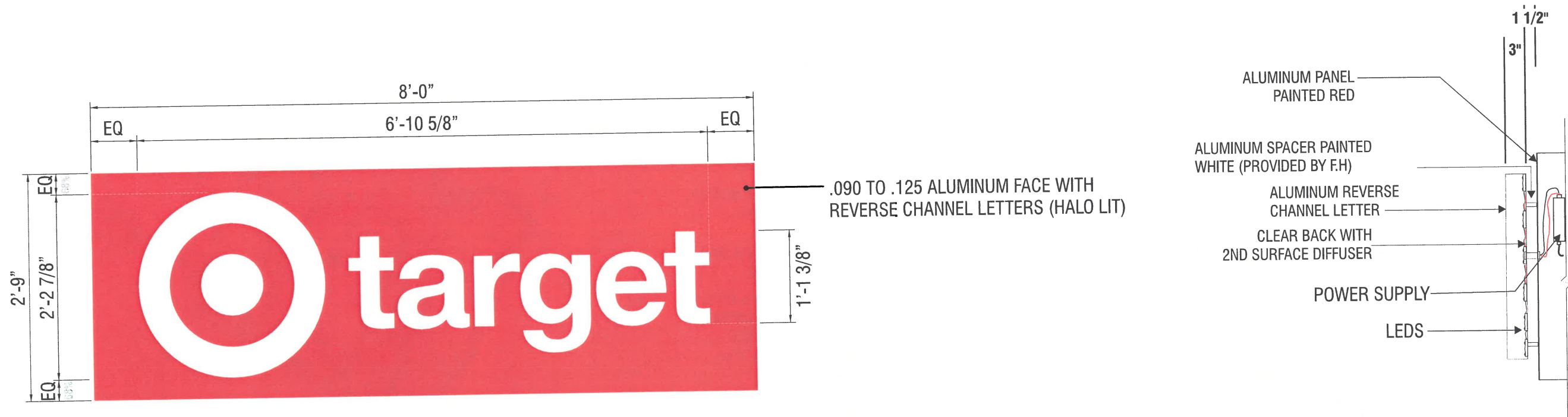
Job Number: **23-50277-10**

Date: **August 9, 2018**

Sheet Number: **7** Of **8**

Design Number: **23-50277-10R4**

This original drawing is provided as part of a planned project and is not to be exhibited, copied or reproduced without the written permission of Federal Heath Sign Company, LLC or its authorized agent. ©FHSC



HORIZONTAL LC-2 REPLACEMENT FACE LAYOUT | R/C/L | TWO (2) REQ'D




scale: 3/4" = 1'

22.0 SQ.FT.

SCOPE OF WORK:

MANUFACTURE & INSTALL TWO (2) ALUMINUM FACES PAINT RED WITH 3" DEEP REVERSE CHANNEL LETTERS PAINTED WHITE, HALO LIT.



MATERIAL FINISH COLORS		
	MP # 82074LVG (FULL GLOSS)	
Face		
	White	
R/C Letters		
	Sloan White LED	
Illumination		



4602 North Avenue Oceanside, CA 92056
(760) 941-0715 Fax (760) 941-0719

Building Quality Signage Since 1901

Revisions:
R1 JG 9.19.18 Update with new elev.; Update per markup; add 2nd option sign A
R2 JG 10.31.18 Update per markup; Remove 2nd option
R3 JG 11.1.18 Update sign B to Aluminum books
R4 VA/JDR 11.19.18 Remove Sign D & re-locate Sign C to existing Sign D placement.

Colors Depicted In This Rendering May Not Match Actual Finished Materials. Refer To Product Samples For Exact Color Match.

Client Approval/Date: _____

Landlord Approval/Date: _____

Account Rep: Boyd Hippensteil

Project Manager: James Tebelman

Drawn By: Jake Posadas/JK

Underwriters Laboratories Inc.   ELECTRICAL TO USE U.L. LISTED COMPONENTS AND SHALL MEET ALL N.E.C. STANDARDS
ALL ELECTRICAL SIGNS ARE TO COMPLY WITH U.L. 48 AND ARTICLE 600 OF THE N.E.C. STANDARDS, INCLUDING THE PROPER GROUNDING AND BONDING OF ALL SIGNS.

Project / Location:



Target Store T2872
6865 Hollister Ave.
Goleta, Ca 93117

Job Number: 23-50277-10

Date: August 9, 2018

Sheet Number: 8 Of 8

Design Number: 23-50277-10R4

This original drawing is provided as part of a planned project and is not to be exhibited, copied or reproduced without the written permission of Federal Heath Sign Company, LLC or its authorized agent. ©FHSC



MBH
990 Atlantic Avenue
Alameda, CA 94501
Tel 510 865 9663
Fax 510 865 1811

MBH PROJECT: 53162

MBH PROJECT: 53162

[illegible]

**PRELIMINARY
NOT FOR CONSTRUCTION**

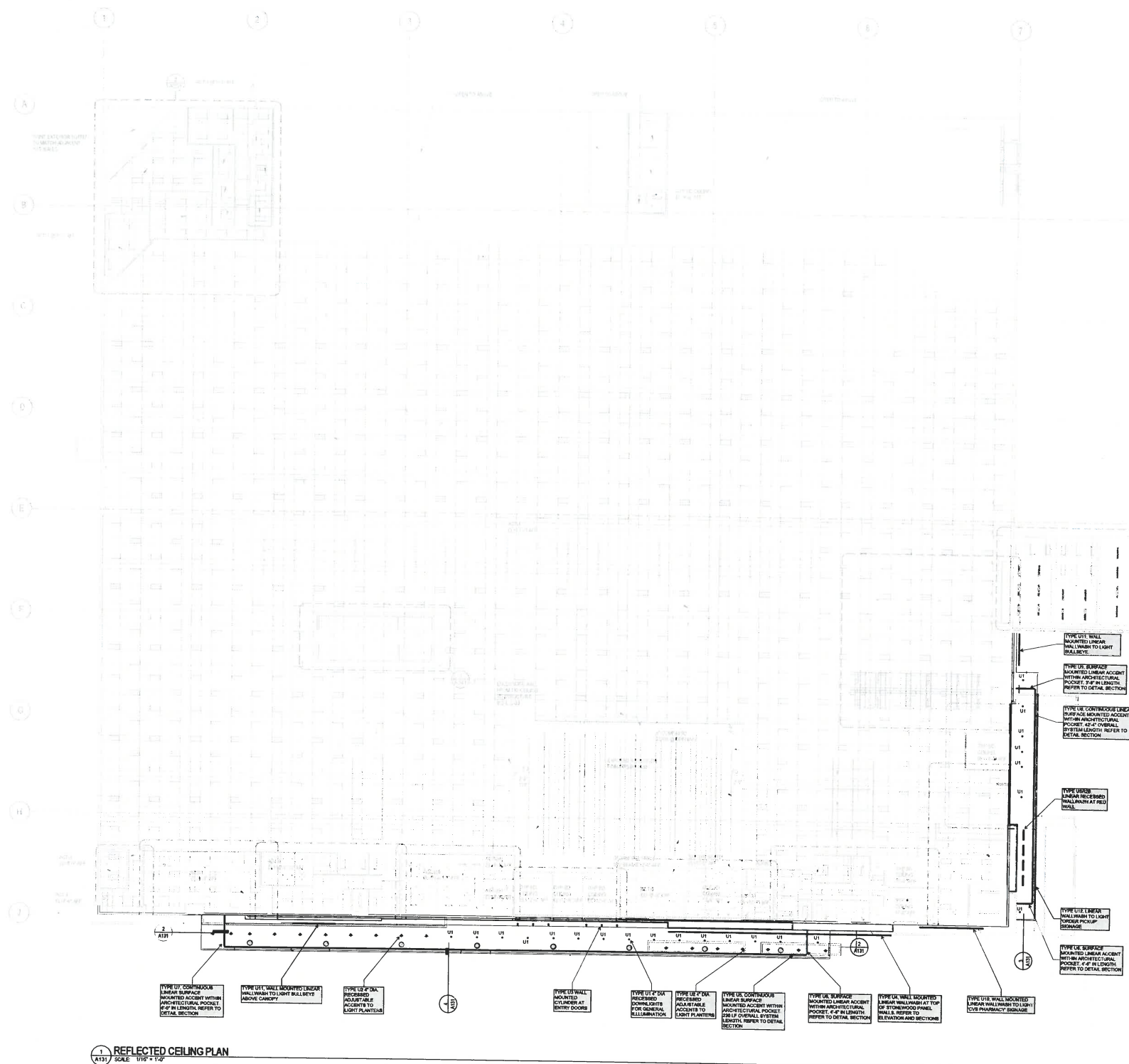
TARGET
6865 Hollister Ave.
Goleta, CA 93117

Project Number		T-2872	
Proto: N/A	Version: N/A	Config: N/A	
Drawn By		MC/LB	
Checked By		CR	

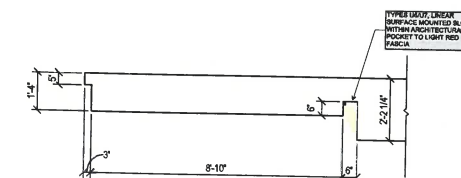
REFLECTED CEILING
PLAN

A131

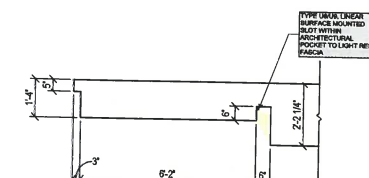
9/18/2018 5:35:05 PM



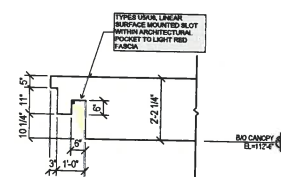
1 REFLECTED CEILING PLAN
A131 SCALE: 1/16" = 1'-0"



2 DETAIL @ MAIN ENTRY CANOPY-END CONDITIO
A131 SCALE: 1/2" = 1'-0"



3 DETAIL @ EASY ENTRY CANOPY-END CONDITION



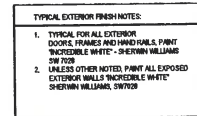
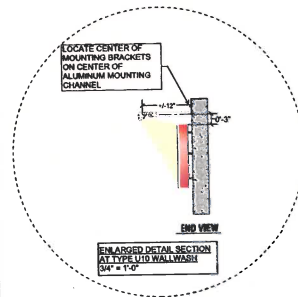
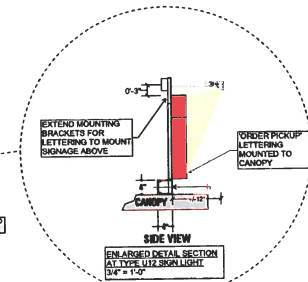
4 TYPICAL FRONT CANOPY FASCIA DETAIL
A131 SCALE: 1/2" = 1'-0"

REFLECTED CEILING PLAN GENERAL NOTES

- A. SEE SHEET A001 FOR SYMBOLS.
- B. ACT CEILING GRIDS ARE CENTERED IN ROOMS PER SPECIFICATION CRITERIA UNLESS NOTED OTHERWISE.
- C. FOR ALIGNMENT OF SPRINKLER IN SALES FLOOR CEILING SEE SPEC, DIV 12.131.
- D. PROVIDE SLIP CONNECTION AT ALL WALLS EXTENDING TO ROOF OR STRUCT PER DETAILS ON SHEET A001.
- E. VERIFY LOCATIONS OF HANGING DEPARTMENT SIGNAGE WITH TARGET LIST. LOCATIONS SHOWN ON THIS PLAN ARE DIAGRAMMATIC ONLY.
- F. FOR CEILING GRID BRACING AND EDGE CONDITIONS IN ISM&C DESIGN CATEGORY SEE SPEC, DIVISION 5.

PA EDIT NOTE:
NOTE "F" IS ONLY REQUIRED IN SEISMIC
DESIGN CATEGORY D, E, AND F.
VERIFY W/ STRUCT. ENGINEER IF SEISMIC
DETAILS ARE REQUIRED. DELETE SEISM
NOTE AND DETAILS ON SHEET A503 WHEN
SEISMIC DESIGN OR CATEGORY IS A, B,
OR C.





950 Atlantic Avenue
Alameda, CA 94501
Tel 510 865 8663
Fax 510 865 1611

MBH PROJECT: 53162

[illegible]

**PRELIMINARY
NOT FOR CONSTRUCTION**



TARGET

6865 Hollister Ave.
Goleta, CA 93117

Project Number **T-2872**

Proto: N/A	Version: N/A	Config: N/A
------------	--------------	-------------

Drawn By	MC/LB
----------	-------

Checked By	CR
------------	----

EXTERIOR ELEVATIONS

A201



MBH PROJECT: 53162

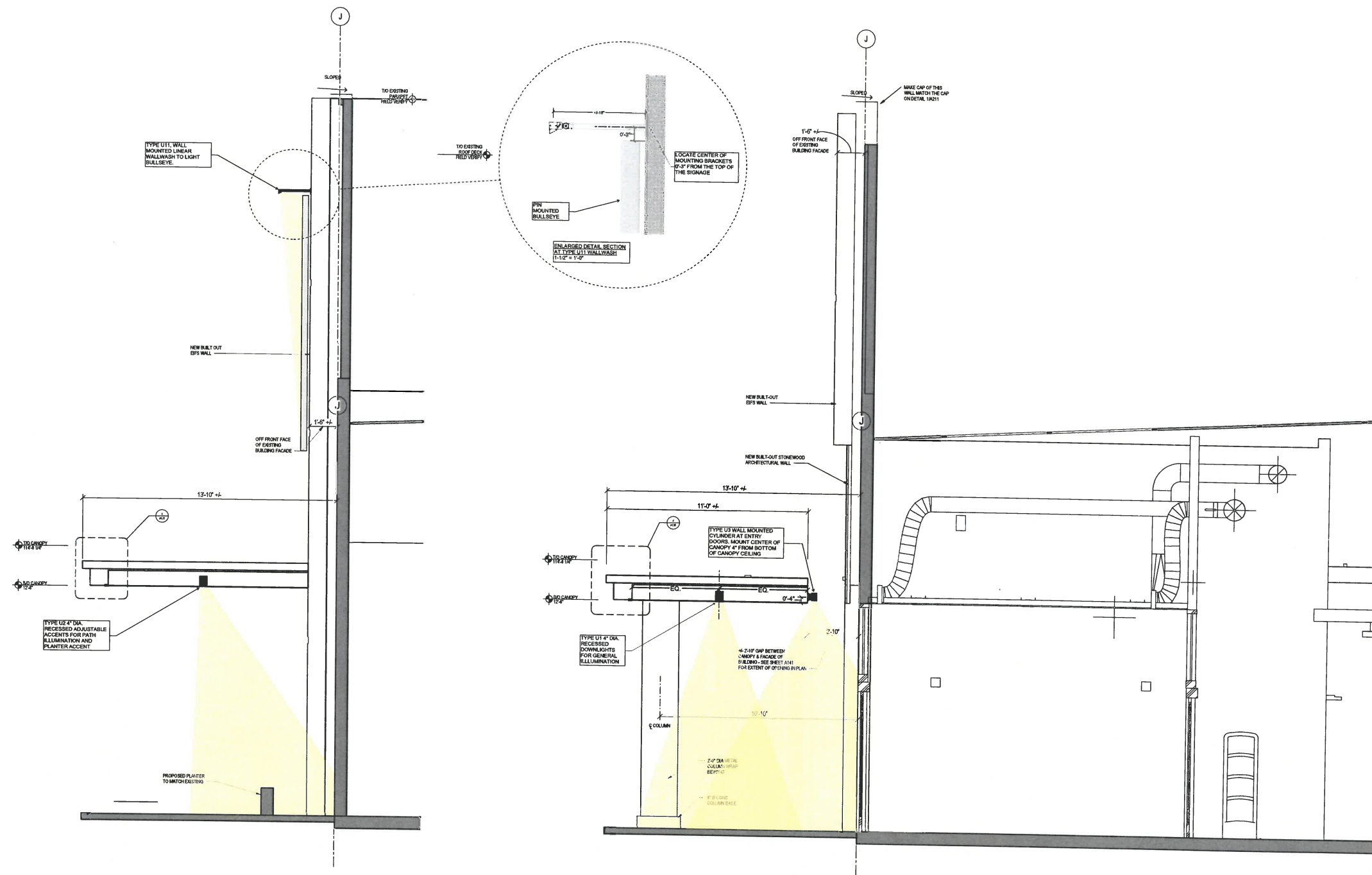
**PRELIMINARY
NOT FOR CONSTRUCTION**

Project Number		T-2872	
Proto: N/A	Version: N/A	Config: N/A	
Drawn By		MC/LB	
Checked By		CR	

ENTRY SECTIONS & DETAILS

A211

9/14/2018 9:43:13 AM



SECTION @ FRONT WALL
SCALE: 1/2" = 1'-0"

2 SECTION @ ENTRY
A211 SCALE: 1/2" = 1'-0"

NOTE:
REFERENCE SHEET A201
FOR EXTERIOR FINISHES



950 Atlantic Avenue
Alameda, CA 94501
Tel 510 865 8683
Fax 510 865 1511

MBH PROJECT: 53162

[illegible]

**PRELIMINARY
NOT FOR CONSTRUCTION**



Project Number **T-2872**

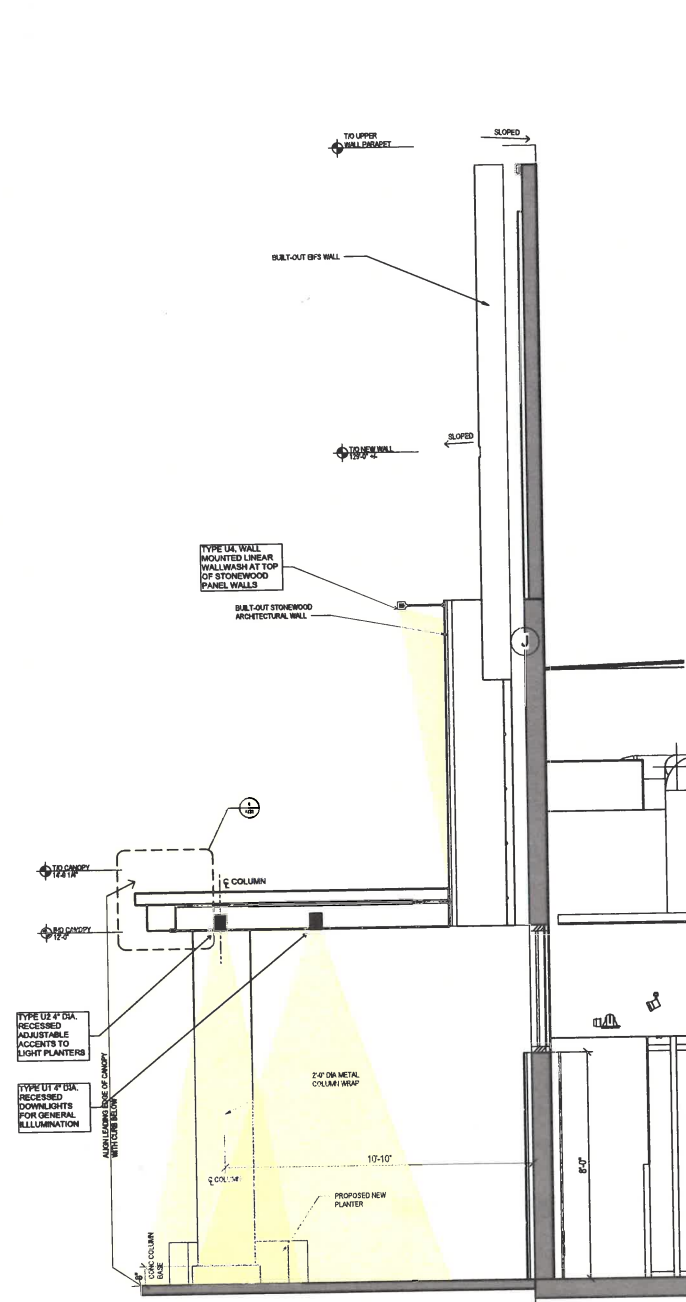
Proto: N/A	Version: N/A	Config: N/A
------------	--------------	-------------

Drawn By	MC/LB
Checked By	CR

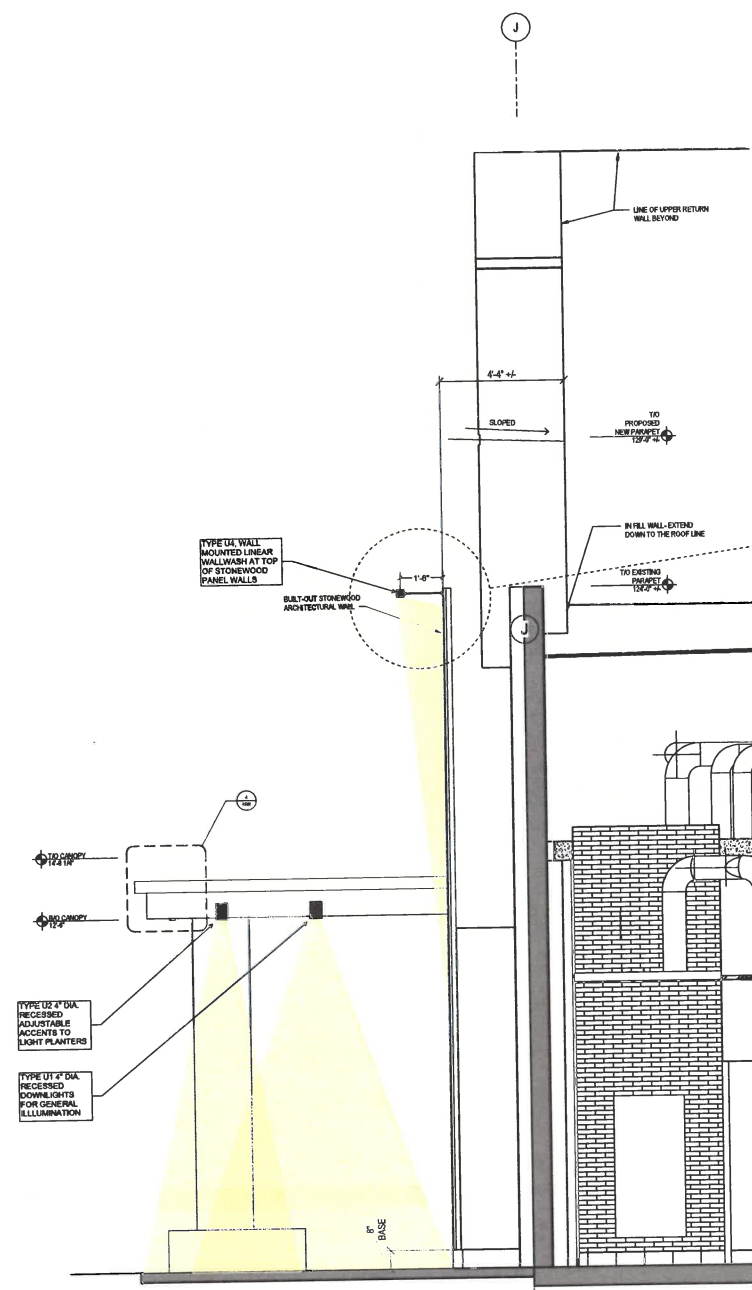
WALL SECTIONS & DETAILS

A212

9/14/2018 9:43:16 AM



1 SECTION @ FRONT WALL
A212 SCALE: 1/2" = 1'-0"



2 SECTION @ FRONT WALL
A212 SCALE: 1/2" = 1'-0"

NOTE:
REFERENCE SHEET A201
FOR EXTERIOR FINISHES