



**TO:** Mayor and Councilmembers

**FROM:** Vyto Adomaitis, Director of Neighborhood Services and Public Safety

**CONTACT:** JoAnne Plummer, Parks and Recreation Manager

**SUBJECT:** Splash Pad Design Considerations at Jonny D. Wallis Neighborhood Park

**RECOMMENDATION:**

Select Option B for the type of Splash Pad and support structures to be designed at Jonny D. Wallis Neighborhood Park.

**BACKGROUND:**

Jonny D. Wallis Neighborhood Park (JDW Park) opened on Saturday, March 30, 2019, and has been a very popular location for residents and visitors. The original design of the park included a Splash Pad, but this amenity could not be built due to water restrictions implemented by the Goleta Water District. Not knowing when these restrictions might be rescinded, the only way to move forward with the construction of the park was to postpone the construction of the Splash Pad and consider it as Phase 2 of the park project.

In order to plan for Phase 2, the area for the Splash Pad feature and the area for the mechanical building to support the structure were both established and supplied with water and electricity at the time of construction. The park construction was completed in March 2019, and the park opened to the public on March 30<sup>th</sup>. On April 9<sup>th</sup> of that same year, just nine days after the park opened, the Goleta Water District took action at their Board meeting to repeal Stage Two and Three Water Shortage Restrictions and Drought Surcharges. The Board also declared the continued existence of a Stage One Water Shortage Emergency.

Jonny D. Wallis Neighborhood Park was originally designed according to the Stage One Water Shortage restriction, but it was the additional restrictions that prohibited the operation of a Splash Pad. The repeal of Stage Two and Three Water Shortage Restrictions has now enabled the City of Goleta to move forward with the design of Phase 2.

Phase 2 consists of the development of the Splash Pad, the support structure for this amenity, additional fencing at the basketball and pickleball courts, security features, some

shade umbrellas at picnic areas near the turf and addressing a drainage concern near the pedestrian entrance. This staff report is intended to address the need to determine the type of splash pad and support structure that will be designed for Jonny D. Wallis Neighborhood Park.

## **DISCUSSION:**

There are different options to consider when designing a splash pad: structures/sprayers (features that release water above the head with some manipulative features by users) and in-ground jets (ones that spray from the ground level). The features with structures are popular with young children. They are usually colorful and can come in a variety of designs. This type of design typically includes the option for features where the user is in control of the water. These features encourage play with others as well as hand/eye coordination. Attachment 1 portrays images that combine the above ground water features as well as those that are manipulated by the user. Attachment 2 provides examples of designs in which the in-ground jets spray the water upwards. These water features can be programmed to a timer which is activated by the user or on a sensor that is activated as the user approaches.

Additional considerations for the splash pad include the design of the support structure. The original park design featured a support building that would house all the mechanical features, including chemical storage for water sanitation. This structure would be similar to the existing restroom facility and would be manufactured off site and craned into place. The proposed image is featured in Attachment 3. However, now that the park is constructed, a building in this location may impact the clear sight lines from areas of the park to the creek. This concern, as well as fiscal impacts, resulted in an exploration of alternatives for the mechanical elements.

There were two other options that were considered to serve as the housing for the mechanical features. Both designs are featured in Attachment 4. Although these designs provide some benefits (e.g., less expensive, do not obstruct views), significant concerns were raised after careful evaluation. One option has placed nearly all the elements underground, which would always require two individuals for maintenance needs. The first individual would do the inspections and/or repairs and the second individual would need to serve as the spotter per Cal OSHA safety standards, which would significantly impact the operating budget. Unfortunately, both options would require chemical storage to be placed underground. The evaluation of initial excavation and construction, combined with concerns of placing chemical storage units underground and close to a creek, led to staff's recommendation of moving forward with the original support structure.

Regardless of the type of water features or support structure, the City will need to establish months/days/hours of operation which will determine how/when the water is activated for this recreation element. For example, the water will likely be activated during the summer, and on the weekends in the warmer non-summer months, but not on a weekday during the winter months.

As the Council is aware, staff had applied for a Proposition 68 Grant for this project, but our application was unsuccessful. As part of that application process, there was a requirement to have a minimum of five public meetings associated with the proposed improvements. During those meetings, the following comments were received related to the type of splash pad for this area:

- Splash Pads with in-ground jets seem to be more popular with some families, as their children spend longer time playing in those types of facilities
- A concern expressed for the potential damage by skateboarders and/or kids on bikes to any type of structure or sprayer above ground
- Comments shared about the lifespan of sprayers, with concern to maintenance or need for replacement
- Other comments were non-specific to types, but excited for any option in Goleta

Staff is recommending that Council select Option B due to the public feedback received during outreach, including concerns related to ongoing maintenance and the potential for vandalism. The water features associated with Option B is currently estimated to cost significantly less than the above ground recreation features (Option A) and will provide better visual security through the park. The support structure included in Option B is the originally specified traditional style building that will coordinate aesthetically with the restroom facility. Combining this type of building with the underground water features does increase the overall costs associated with Option B.

On August 5, 2020, after thoughtful discussion and deliberation, the Parks and Recreation Commission supported staff's recommendation of in-ground jets for the feature design. The support structure included in Option B is the originally specified traditional style building that will coordinate aesthetically with the restroom facility and contain the mechanical and chemical infrastructure needed to operate the Splash Pad according to Santa Barbara County Environmental Health standards. The data for the evaluation of the support structure was not available in time for the Parks and Recreation Commission to assess either support structure option, therefore this recommendation is based on staff's evaluation of data provided by the consultant.

Staff is requesting that the City Council support the recommendation of the Parks and Recreation Commission and staff's recommendation of Option B to determine the direction the design team needs to work towards completing construction documents for Phase 2 of Jonny D. Wallis Neighborhood Park. Following the determination of the recreation features and the support structure, RRM, Inc. will complete the design and construction documents for the splash pad and the other improvements at Jonny D. Wallis Neighborhood Park. Staff will return to Council for the authorization to bid the project and share the recommended hours of operation for the Splash Pad.

There are currently only two splash pads located in Santa Barbara County. Both are located on private property and users are regulated. In the next year, both the City of Goleta and the City of Santa Barbara are installing splash pads, which will be the first public splash pads in Santa Barbara County.

**GOLETA STRATEGIC PLAN:**

**City-Wide Strategy:** #2: Support Community Vitality and Enhanced Recreational Opportunities.

**Strategic Goal:** Support programs that enhance the quality of life in the Goleta community such as recreation, public safety, human services, and cultural arts

**FISCAL IMPACTS:**

Staff is only seeking direction on the design options the team needs to work towards for completing the construction documents for Phase 2 of JDW Park. The following chart compares the estimated costs for each option. Actual costs will be known once staff goes out to bid. Funding for construction of the Splash Pad will be supported by Park Development Impact Fees and future annual operation and maintenance costs will be supported by the General Fund.

<b>Splash Pad Operations Cost Comparison</b>				
<b>Options to Be Considered</b>	<b>Annual Operation Costs (chemicals, utility &amp; materials)</b>	<b>Approx. Annual Staff Maintenance Costs</b>	<b>Approx. Purchase Price of water features</b>	<b>Approx. Purchase Price of Support Structure</b>
<b>Option A</b> <ul style="list-style-type: none"> <li>• Recreation features above ground</li> <li>• Alternate support structure</li> </ul>	\$20,000	\$15,000	\$180,000*	\$46,000
<b>Option B</b> <ul style="list-style-type: none"> <li>• Recreation features under ground</li> <li>• Traditional Style Building</li> </ul>	\$20,000	\$15,000	\$126,000*	\$115,000

*\*Costs estimated by one vendor, a second vendor's price quote has the underground features estimated nearly \$80,000 lower than the above ground features.*

**ALTERNATIVES:**

Council could choose not to support the either option or provide staff alternate direction. If design direction is significantly delayed, it will impact the timeline for the project, which is currently in coordination with the development of the Armitos Park Project, Bike Path and Community Garden.



**Reviewed By:**



Kristine Schmidt  
Assistant City Manager

**Legal Review By:**



Michael Jenkins  
City Attorney

**Approved By:**



Michelle Greene  
City Manager

**ATTACHMENTS:**

1. Splash Pad design with structures and sprayers
2. Splash Pad design with in-ground jets
3. Traditional Support Structure
4. Alternate Support Structure

## **ATTACHMENT 1**

Option 1 Splash Pad Design with Structures and Sprayers





**ATTACHMENT 1 – Option A Splash Pad Design with Structures and Sprays**















## **ATTACHMENT 2**

Option 2 Splash Pad Design with In-Ground Jets



ATTACHMENT 2 – Option B Splash Pad Design with In Ground Jets

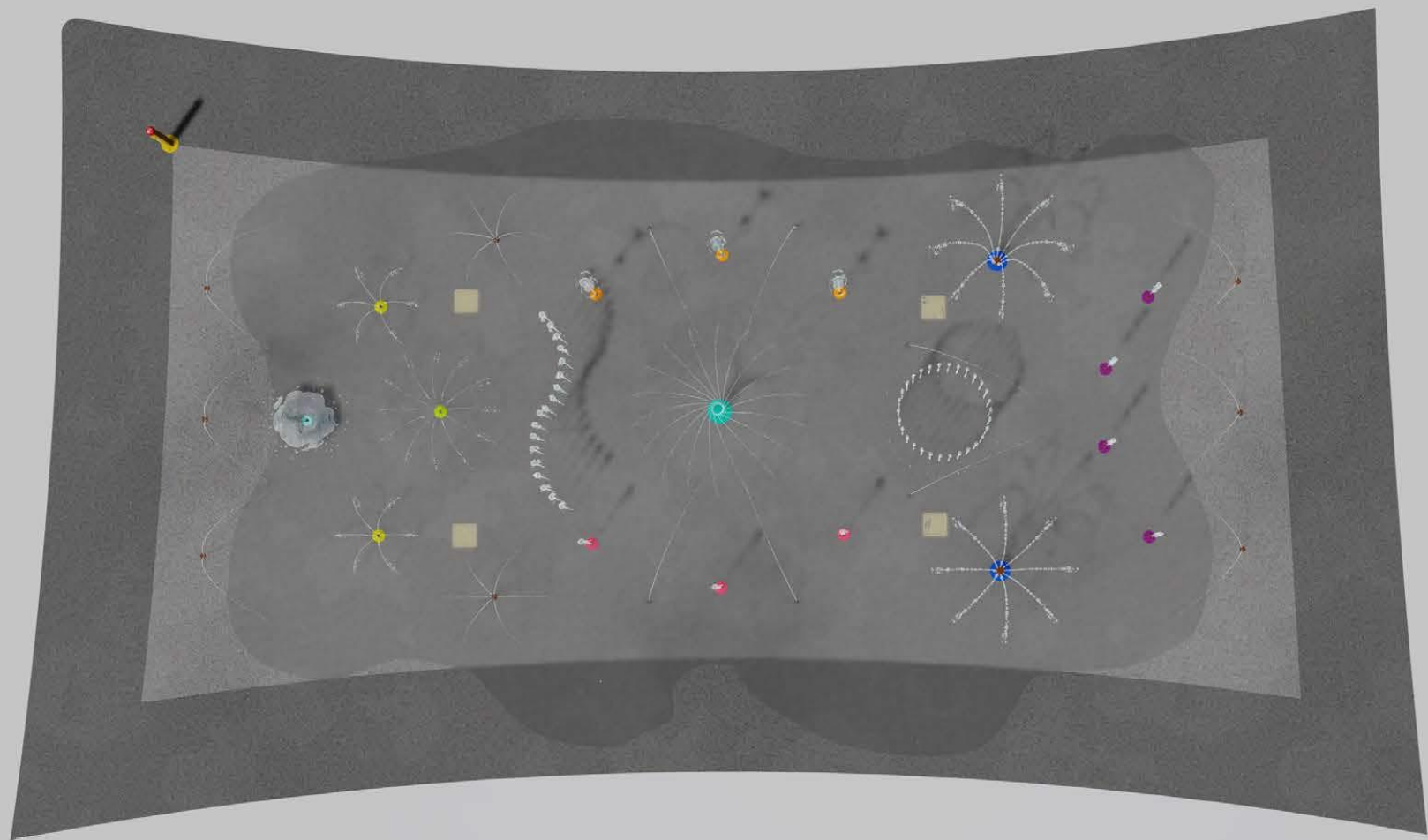








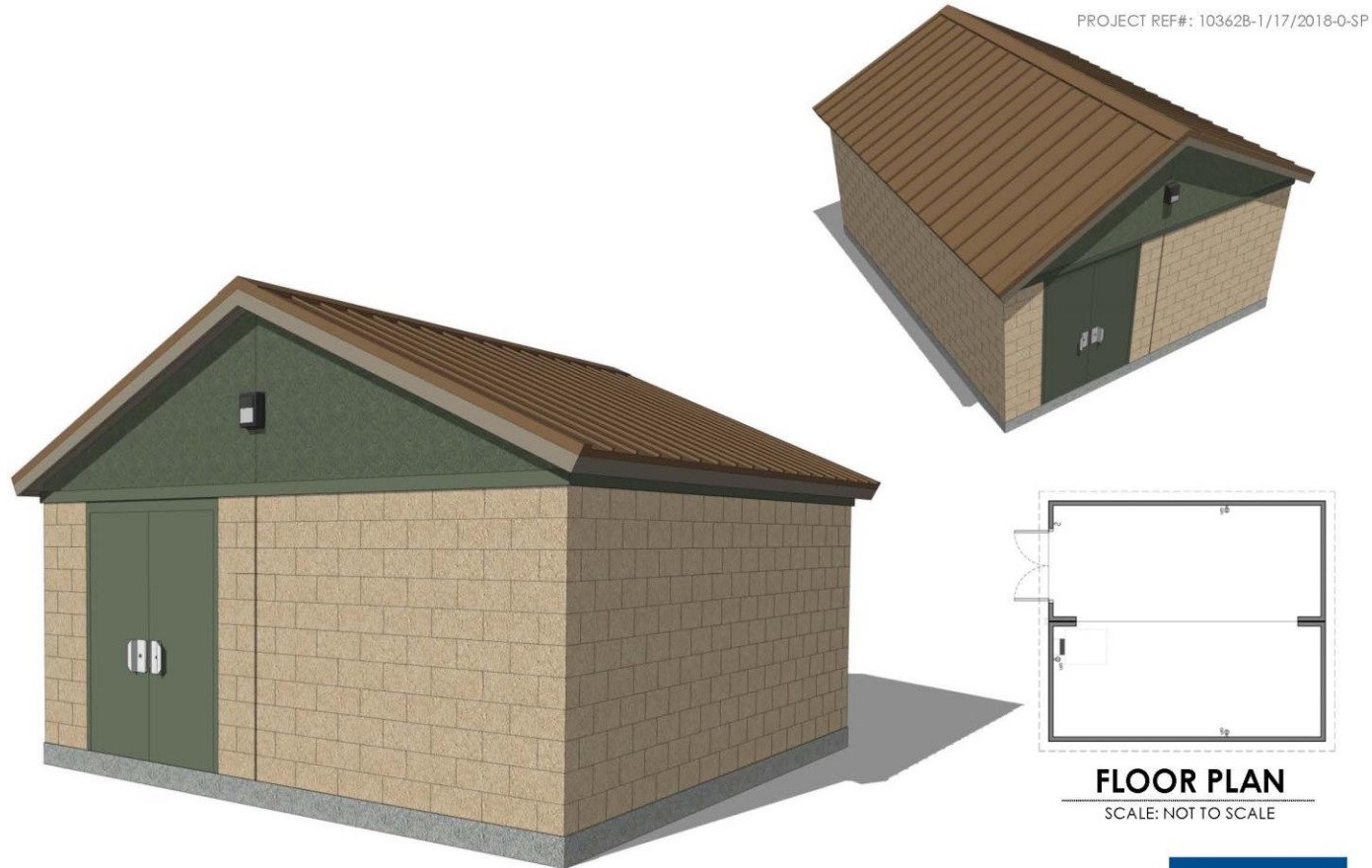




### **ATTACHMENT 3**

Option 2 Traditional Style Support Structure

## ATTACHMENT 3 – Traditional Support Structure (Option 2)



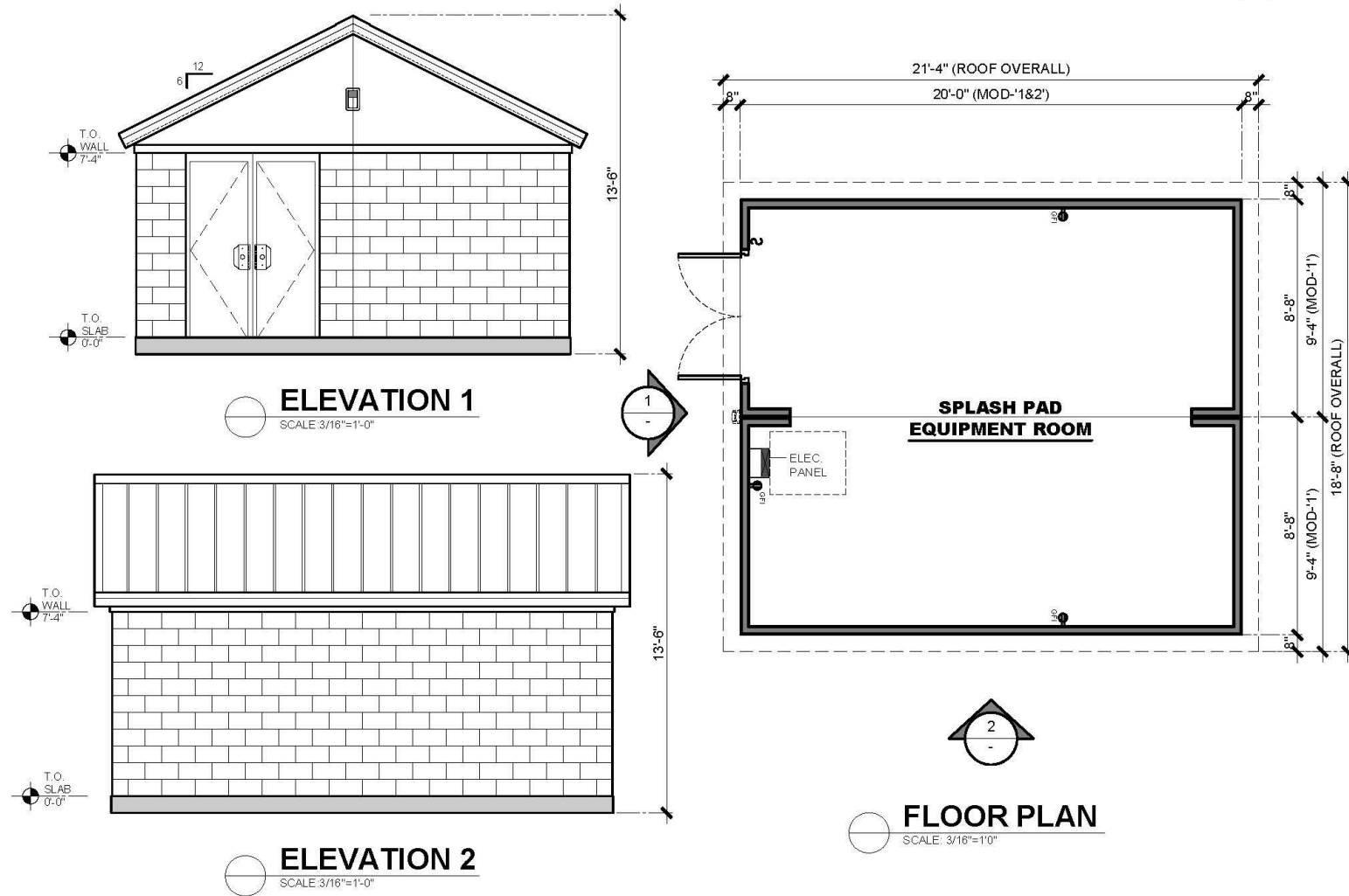
### HOLLISTER-KELLOGG PARK GOLETA, CALIFORNIA SPLASH PAD/ EQUIPMENT BUILDING



COPYRIGHT 2017, PUBLIC RESTROOM COMPANY THIS MATERIAL IS THE EXCLUSIVE PROPERTY OF PUBLIC RESTROOM COMPANY AND SHALL NOT BE REPRODUCED, USED OR DISCLOSED TO OTHERS EXCEPT AS AUTHORIZED BY THE WRITTEN PERMISSION OF PUBLIC RESTROOM COMPANY

ARTIST IMPRESSION: 3D RENDERING ONLY FOR REPRESENTATION. COLORS AND MATERIALS ARE SUBJECT TO CHANGE

[www.PublicRestroomCompany.com](http://www.PublicRestroomCompany.com)  
2587 BUSINESS PARKWAY  
MINDEN NEVADA 89423  
P: 888-888-2060 F: 888-888-1448



 <div><b>PUBLIC RESTROOM COMPANY</b> Building Better Places To Go.™</div>	COPYRIGHT 2018, PUBLIC RESTROOM COMPANY THIS MATERIAL IS THE EXCLUSIVE PROPERTY OF PUBLIC RESTROOM COMPANY AND SHALL NOT BE REPRODUCED, USED, OR DISCLOSED TO OTHERS EXCEPT AS AUTHORIZED BY THE WRITTEN PERMISSION OF PUBLIC RESTROOM COMPANY.	BUILDING TYPE:	<b>SPLASH PAD / EQUIPMENT BUILDING</b>		REVISION #	REVISION DATE:	SHEET#
		PROJECT:	<b>HOLLISTER-KELLOGG PARK GOLETA, CA</b>	-	-	-	
				PROJECT #:	START DATE:	MAX. PERSON / HOUR:	
				<b>10362B</b>	<b>1/17/2018</b>	-   -   -	
			DRAWN BY: EOR				

## **ATTACHMENT 4**

Option 1 Alternate Styles for Support Structure



## ATTACHMENT 4 –Alternative Support Structures (Option 1)







## **ATTACHMENT 5:**

Splash Pad at Jonny D. Wallis Neighborhood Park Presentation



# **SPLASH PAD AT JONNY D. WALLIS NEIGHBORHOOD PARK**

---

**SEPTEMBER 1, 2020**

**CITY COUNCIL MEETING**

**PRESENTED BY: JOANNE PLUMMER, PARKS & RECREATION MANAGER  
DEPARTMENT OF NEIGHBORHOOD SERVICES & PUBLIC SAFETY**



# ATTACHMENT 1 STRUCTURES AND SPRAYERS



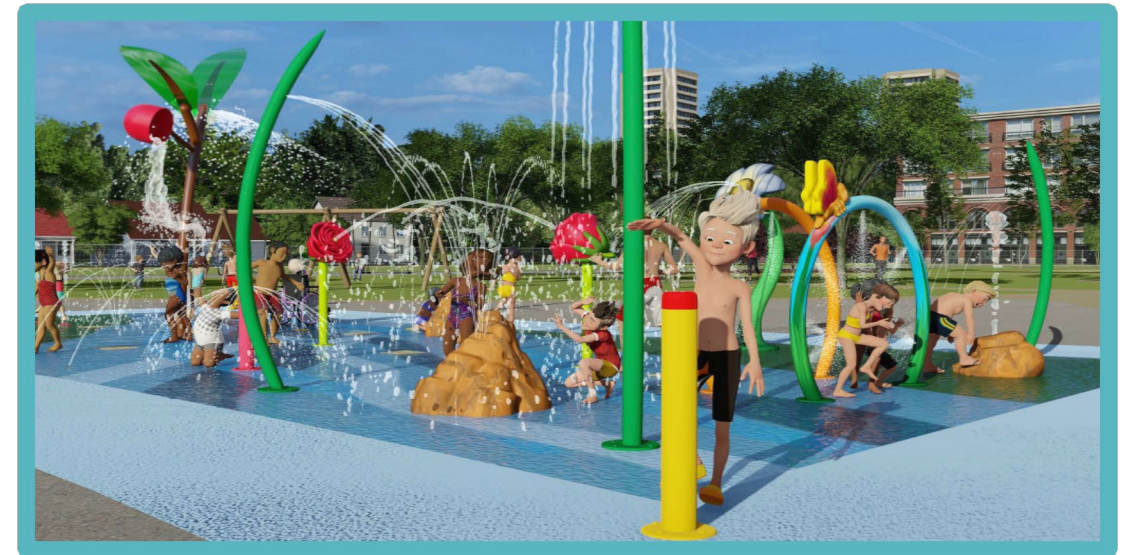




# ATTACHMENT 1

## STRUCTURES AND SPRAYERS

---



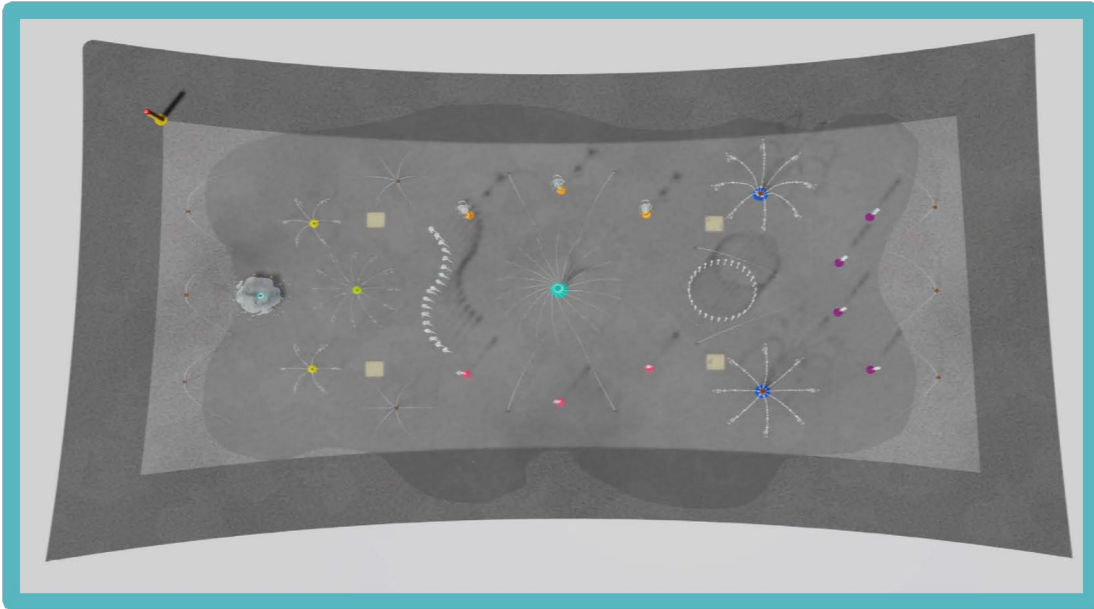




# ATTACHMENT 2 IN-GROUND SPRAYERS



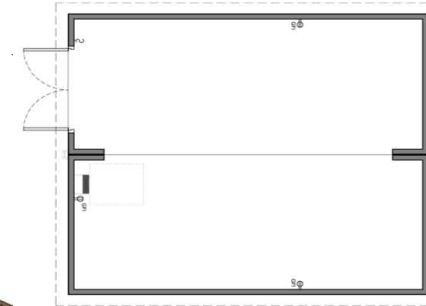
# ATTACHMENT 2 IN-GROUND SPRAYERS







# TRADITIONAL STYLE SUPPORT STRUCTURE



**FLOOR PLAN**

SCALE: NOT TO SCALE





# ALTERNATE CONSIDERATIONS FOR SUPPORT STRUCTURE

---





# ALTERNATE CONSIDERATIONS FOR SUPPORT STRUCTURE







# OPTION B – STAFF RECOMMENDATION

---





QUESTIONS?