

SITE PLAN  
SCALE: 1/32" = 1' - 0"

CA-HWY 101

DESCRIPTION OF EXISTING SIGNS:

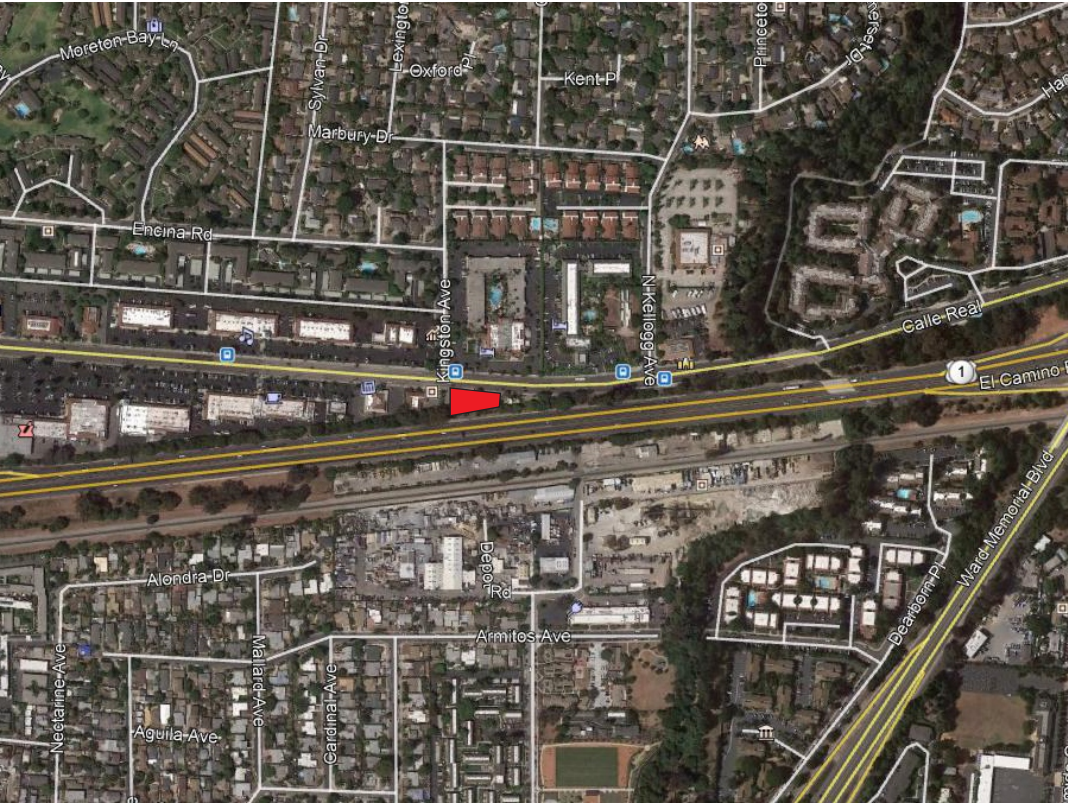
TYPE	SIGN COPY	DIMENSIONS	AREA
Monument Sign	Price/ID	5' - 1" x 12' - 1/2"	73.25 sq. ft.
Building Sign	"V" Logo	0' - 11" x 3' - 1"	2.83 sq. ft.
Building Sign	"V" Logo	0' - 11" x 3' - 1"	2.83 sq. ft.

TOTAL EXISTING SIGN AREA: 78.91 sq. ft.

DESCRIPTION OF PROPOSED SIGNS:

TYPE	SIGN COPY	DIMENSIONS	AREA
① Monument Sign	Price/ID	5' - 1" x 12' - 1/2"	73.25 sq. ft.
② Canopy Signs	Valero Copy	2' - 9" x 11' - 7"	25.31 sq. ft.
③ Canopy Signs	Valero Logo	2' - 9" x 3' - 6"	7.55 sq. ft.
④ Canopy Signs	Valero Logo	2' - 9" x 3' - 6"	7.55 sq. ft.
⑤ Canopy Signs	Valero Logo	2' - 9" x 3' - 6"	7.55 sq. ft.
Dispenser Valance	Valero copy	7 1/2" x 36" (1.87 x 6)	11.25 sq.ft.
Dispenser Door	Valero copy	3" x 20 1/2" (0.42 x 6)	2.52 sq.ft.
Dispenser End Valance	Valero logo	11" x 14" (1.06 x 6)	6.36 sq.ft.

TOTAL PROPOSED SIGN AREA: 141.34 sq. ft.



VICINITY MAP

SCOPE OF WORK:

REFACE EXISTING MONUMENT SIGN TO INCLUDE LED NUMERALS. REPLACE EXISTING CANOPY ACM PANELS AND INSTALL CANOPY SIGNS WITH EYEBROW. PAINT ALL PREVIOUSLY PAINTED STRUCTURES INCLUDING BUILDING, BOLLARDS, COLUMNS, CURBS, ISLANDS, ETC.

**NOTE:**  
THESE DRAWINGS MAY NOT  
BE THE FINAL COLOR SCHEME  
AND APPROVED LAYOUT

**RECEIVED**  
**October 22, 2020**  
City of Goleta  
Current Planning Division



Sign Development Inc.

License #576277

Upland, CA 91786 (909) 920-5535

**PROPRIETARY INFORMATION.** The information disclosed in this document, including all drawings, designs and related materials, is the valuable and proprietary information of Sign Development Inc. It is provided solely for the purpose of evaluation for purchase and, without the express written authorization of Sign Development Inc., may not be disclosed or duplicated, in whole or in part, for any reason. Sign Development Inc. expressly reserves all patent, copyright and other proprietary rights to this document, including all design, manufacturing, reproduction, use, and sales rights thereto. © 2011 SIGN DEVELOPMENT INC.

CUSTOMER APPROVAL

SIGN AND PRINT FULL NAME

DATE

NO. W6460

PAGE: 1 OF 6

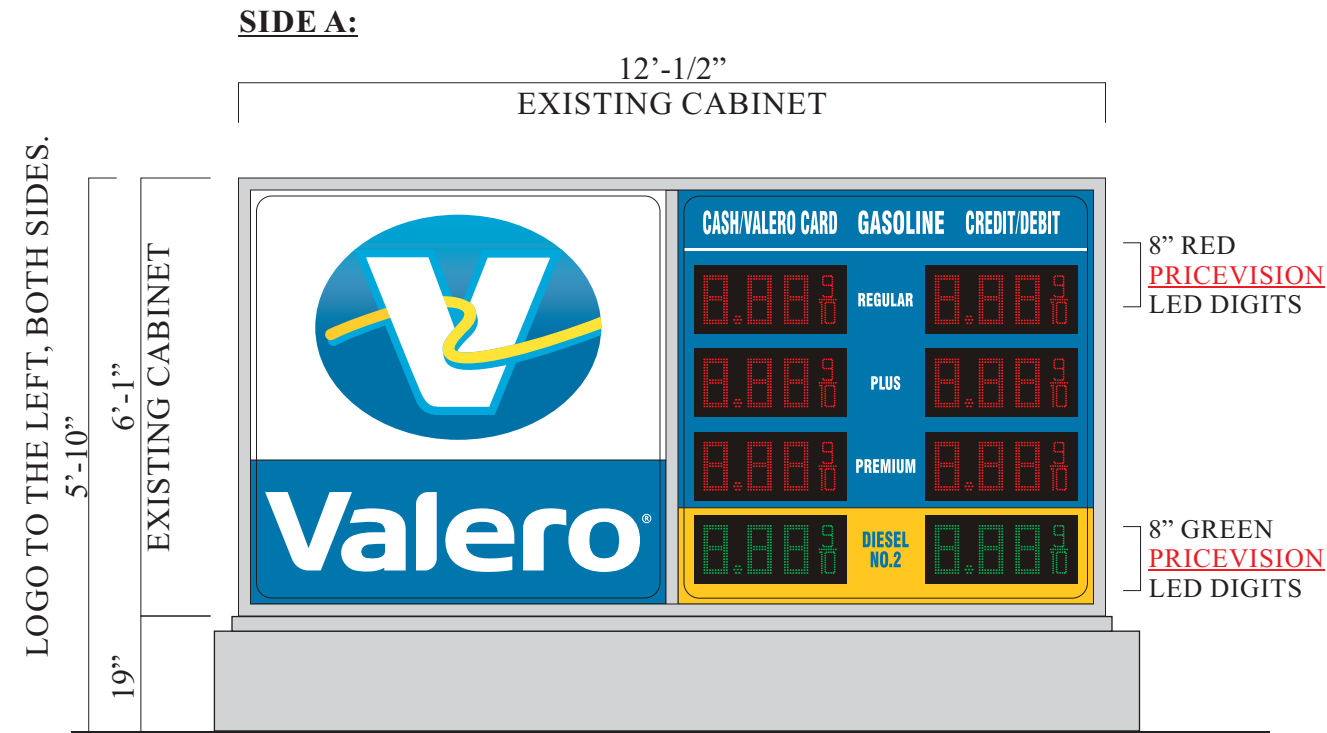
DATE: 03.14.20SM

REV: 03.19.20BA 04.15.20BA 04.30.20BA  
05.07.20BA 05.13.20BA 07.29.20SM

10.22.20BA

**Valero**

5661 CALLE REAL  
GOLETA, CA 93117



REMOVE EXISTING  
EXTERNAL ILLUMINATION

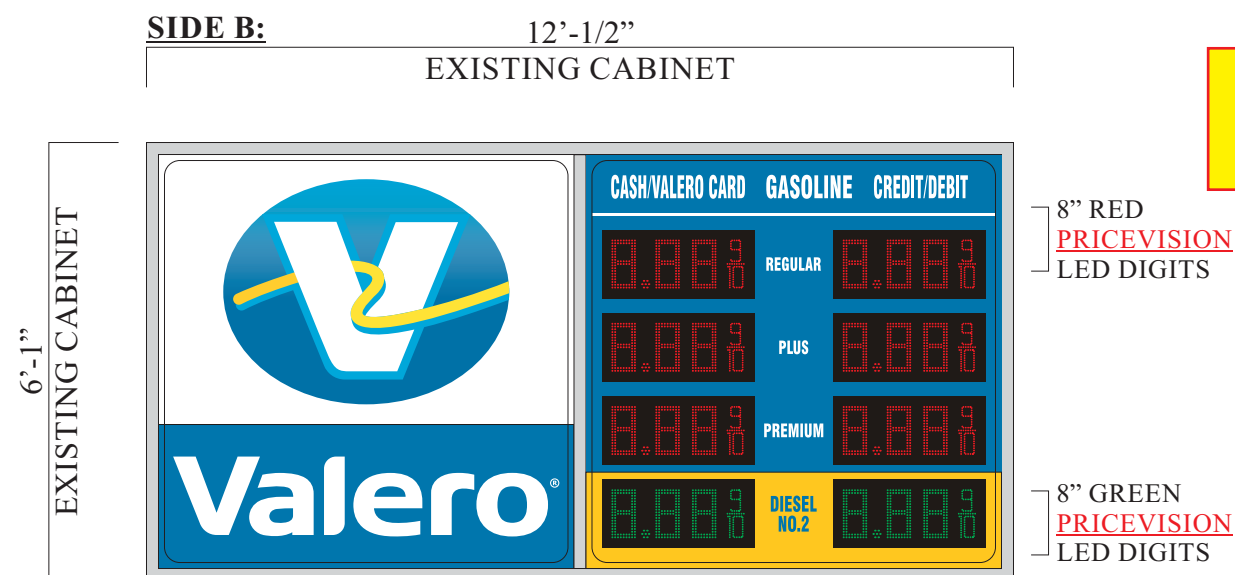


EXISTING D/F PRICE I/ID SIGN  
73.25 sq. ft (EXISTING)

- ① PROPOSED: INSTALL NEW INTERNAL ILLUMINATION TO EXISTING CABINET.  
REFACE EXISTING D/F PRICE/ID SIGN.  
73.25 sq.ft.

NOTE:  
PAINT EXISTING CABINET  
DIVIDER BAR, AND BASE STRUCTURE  
VALERO LIGHT GRAY, BY SDI.

SCALE: 3/8" = 1'-0"



PRICE SIGN TO BE ON TWO (2) CIRCUITS.  
ONE (1) FOR LIGHTING, ONE (1) FOR LEDs, BY OWNER.

**RECEIVED**  
October 22, 2020  
City of Goleta  
Current Planning Division

**PRELIMINARY**

**NOTE:**  
THESE DRAWINGS MAY NOT  
BE THE FINAL COLOR SCHEME  
AND APPROVED LAYOUT



Sign Development Inc.

License #576277

Upland, CA 91786 (909) 920-5535

**PROPRIETARY INFORMATION.** The information disclosed in this document, including all drawings, designs and related materials, is the valuable and proprietary information of Sign Development Inc. It is provided solely for the purpose of evaluation for purchase and, without the express written authorization of Sign Development Inc., may not be disclosed or duplicated, in whole or in part, for any reason. Sign Development Inc. expressly reserves all patent, copyright and other proprietary rights to this document, including all design, manufacturing, reproduction, use, and sales rights thereto. © 2011 SIGN DEVELOPMENT INC.

**CUSTOMER APPROVAL**

SIGN AND PRINT FULL NAME

DATE

**NO. W6460**

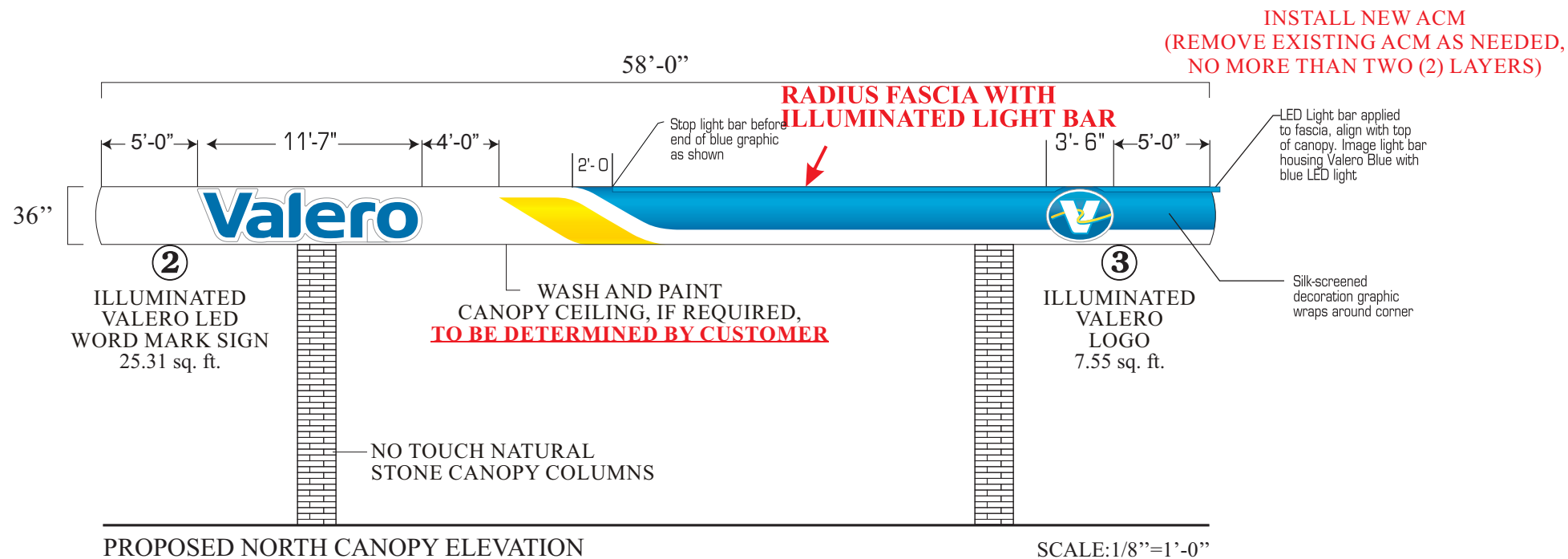
**PAGE: 2 OF 6**

**DATE: 03.14.20SM**

**REV: 03.19.20BA 04.15.20BA 04.30.20BA  
05.07.20BA 05.13.20BA 07.29.20SM**

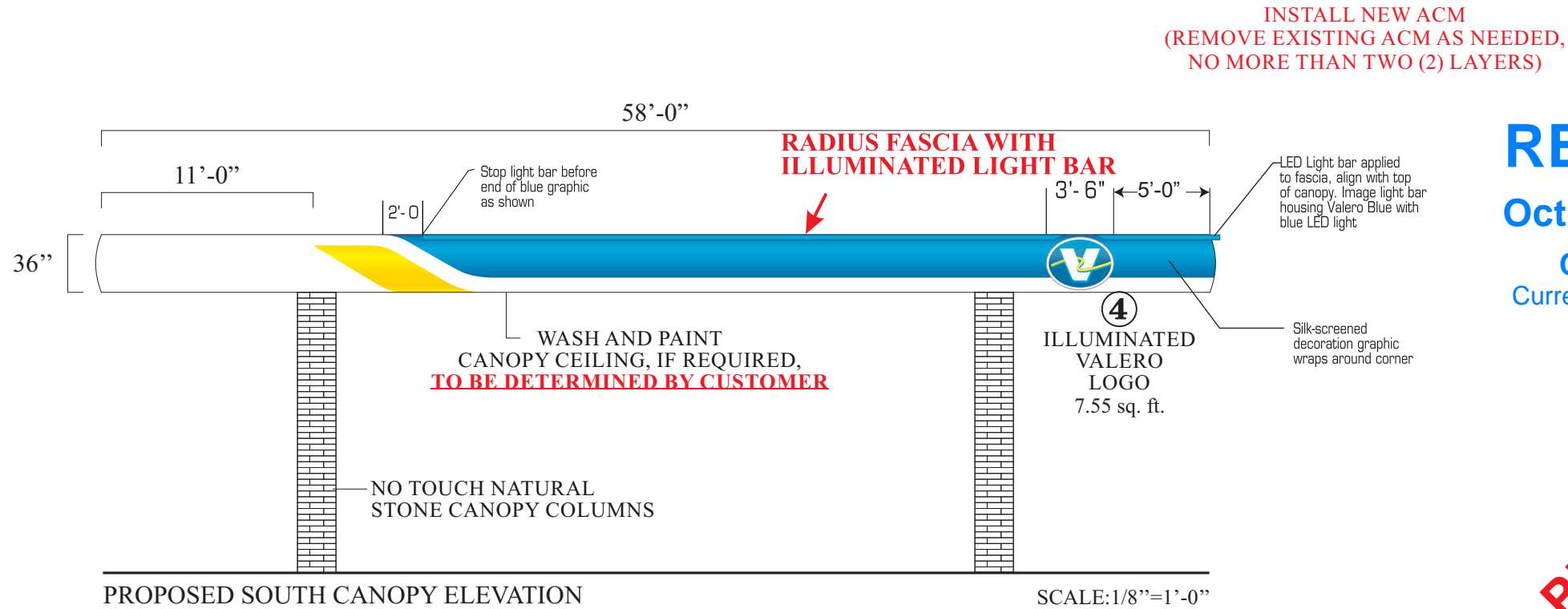
**10.22.20BA**

**Valero** 5661 CALLE REAL  
GOLETA, CA 93117



EXISTING NORTH CANOPY ELEVATION

NOTES:  
 REMOVE ANY AD SIGNS AND BANNERS ON BUMPER POLES OR CANOPY COLUMNS.  
 PAINT ALL EXISTING ISLAND BOLLARDS VALERO DARK GRAY, **BY CUSTOMER.**  
 PAINT PREVIOUSLY PAINTED ISLAND CURBS (FACES ONLY) VALERO DARK GRAY, **BY CUSTOMER.**  
 REMOVE EXISTING TRASH AND WASH CADDIES AND INSTALL NEW VALERO TRASH CADDIES.



**RECEIVED**  
**October 22, 2020**  
 City of Goleta  
 Current Planning Division




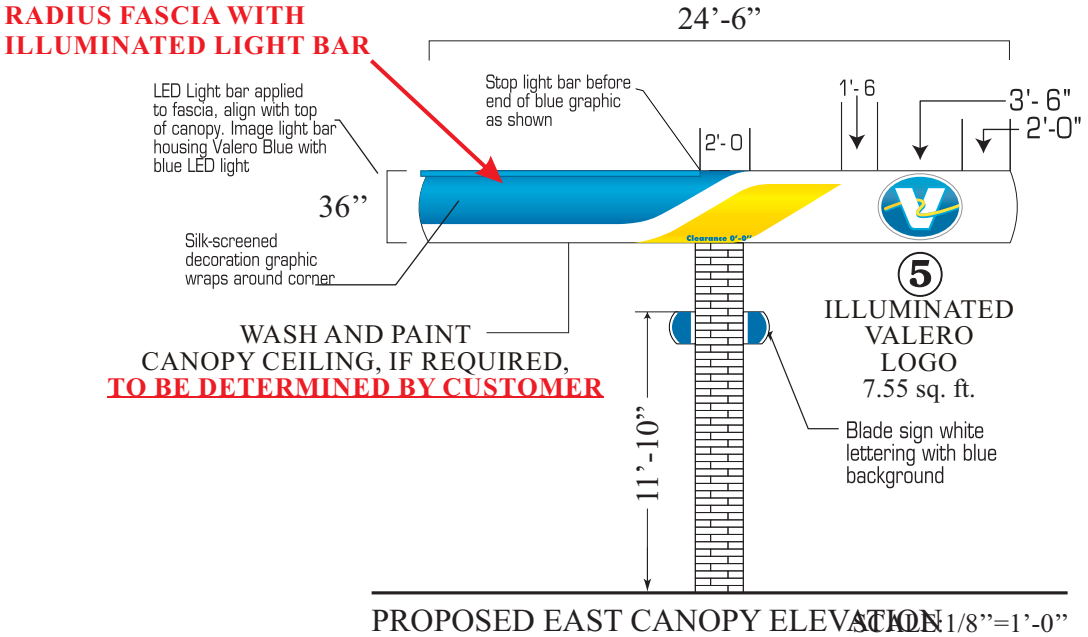
INSTALL (3) SMALL TRASH CADDIES.

**NOTE:**  
 THESE DRAWINGS MAY NOT BE THE FINAL COLOR SCHEME AND APPROVED LAYOUT

**PRELIMINARY**

 **Sign Development Inc.**  
 License #576277  
 Upland, CA 91786 (909) 920-5535

<b>PROPRIETARY INFORMATION.</b> The information disclosed in this document, including all drawings, designs and related materials, is the valuable and proprietary information of Sign Development Inc. It is provided solely for the purpose of evaluation for purchase and, without the express written authorization of Sign Development Inc., may not be disclosed or duplicated, in whole or in part, for any reason. Sign Development Inc. expressly reserves all patent, copyright and other proprietary rights to this document, including all design, manufacturing, reproduction, use, and sales rights thereto. © 2011 SIGN DEVELOPMENT INC.	<b>CUSTOMER APPROVAL</b>		<b>NO. W6460</b>	<b>PAGE: 3 OF 6</b>		 <b>5661 CALLE REAL GOLETA, CA 93117</b>
			<b>DATE: 03.14.20SM</b>			
			<b>REV: 03.19.20BA</b>	<b>04.15.20BA</b>	<b>04.30.20BA</b>	
			<b>05.07.20BA</b>	<b>05.13.20BA</b>	<b>07.29.20SM</b>	
	<b>SIGN AND PRINT FULL NAME</b>	<b>DATE</b>	<b>10.22.20BA</b>			

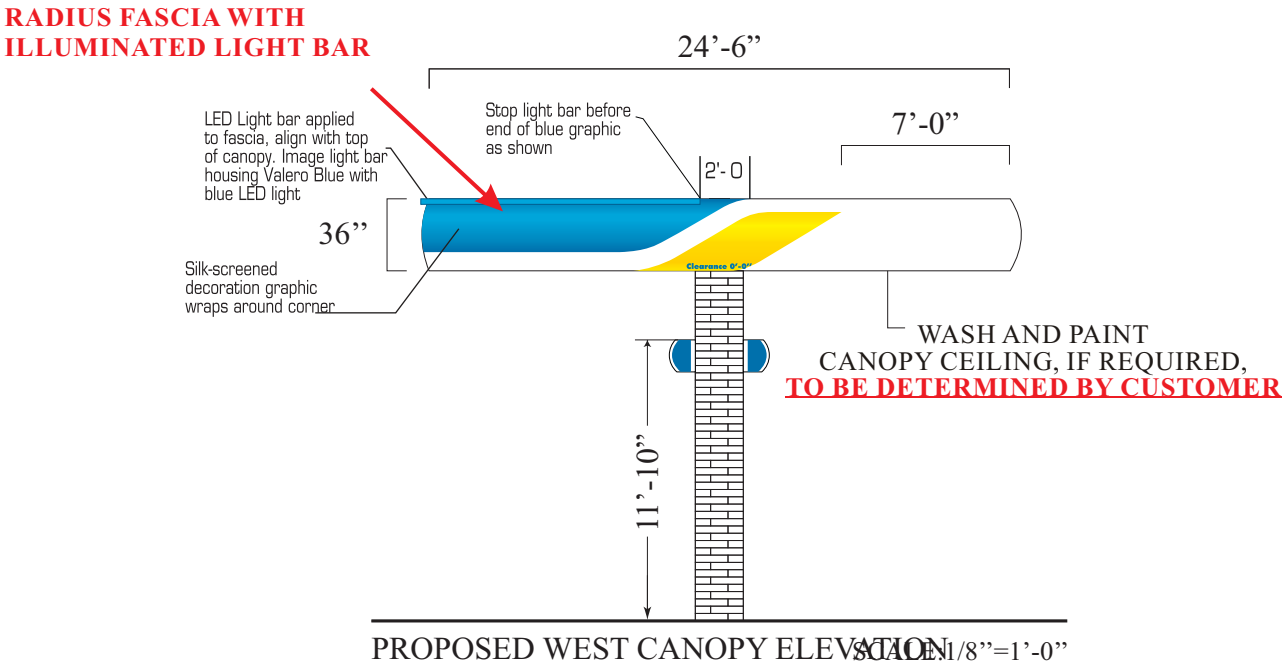


INSTALL NEW ACM  
(REMOVE EXISTING ACM AS NEEDED,  
NO MORE THAN TWO (2) LAYERS)



EXISTING EAST CANOPY ELEVATION

NOTES:  
REMOVE ANY AD SIGNS AND BANNERS ON BUMPER POLES OR CANOPY COLUMNS.  
PAINT ALL EXISTING ISLAND BOLLARDS VALERO DARK GRAY, **BY CUSTOMER.**  
PAINT PREVIOUSLY PAINTED ISLAND CURBS (FACES ONLY) VALERO DARK GRAY, **BY CUSTOMER.**  
REMOVE EXISTING TRASH AND WASH CADDIES AND INSTALL NEW VALERO TRASH CADDIES.



INSTALL NEW ACM  
(REMOVE EXISTING ACM AS NEEDED,  
NO MORE THAN TWO (2) LAYERS)



INSTALL (3) SMALL TRASH CADDIES.

**NOTE:**  
THESE DRAWINGS MAY NOT  
BE THE FINAL COLOR SCHEME  
AND APPROVED LAYOUT

**RECEIVED**  
October 22, 2020  
City of Goleta  
Current Planning Division

**PRELIMINARY**



**Sign Development Inc.**

License #576277

Upland, CA 91786 (909) 920-5535

**PROPRIETARY INFORMATION.** The information disclosed in this document, including all drawings, designs and related materials, is the valuable and proprietary information of Sign Development Inc. It is provided solely for the purpose of evaluation for purchase and, without the express written authorization of Sign Development Inc., may not be disclosed or duplicated, in whole or in part, for any reason. Sign Development Inc. expressly reserves all patent, copyright and other proprietary rights to this document, including all design, manufacturing, reproduction, use, and sales rights thereto. © 2011 SIGN DEVELOPMENT INC.

**CUSTOMER APPROVAL**

SIGN AND PRINT FULL NAME

DATE

**NO. W6460**

**PAGE: 4 OF 6**

**DATE: 03.14.20SM**

**REV: 03.19.20BA 04.15.20BA 04.30.20BA  
05.07.20BA 05.13.20BA 07.29.20SM**

**10.22.20BA**

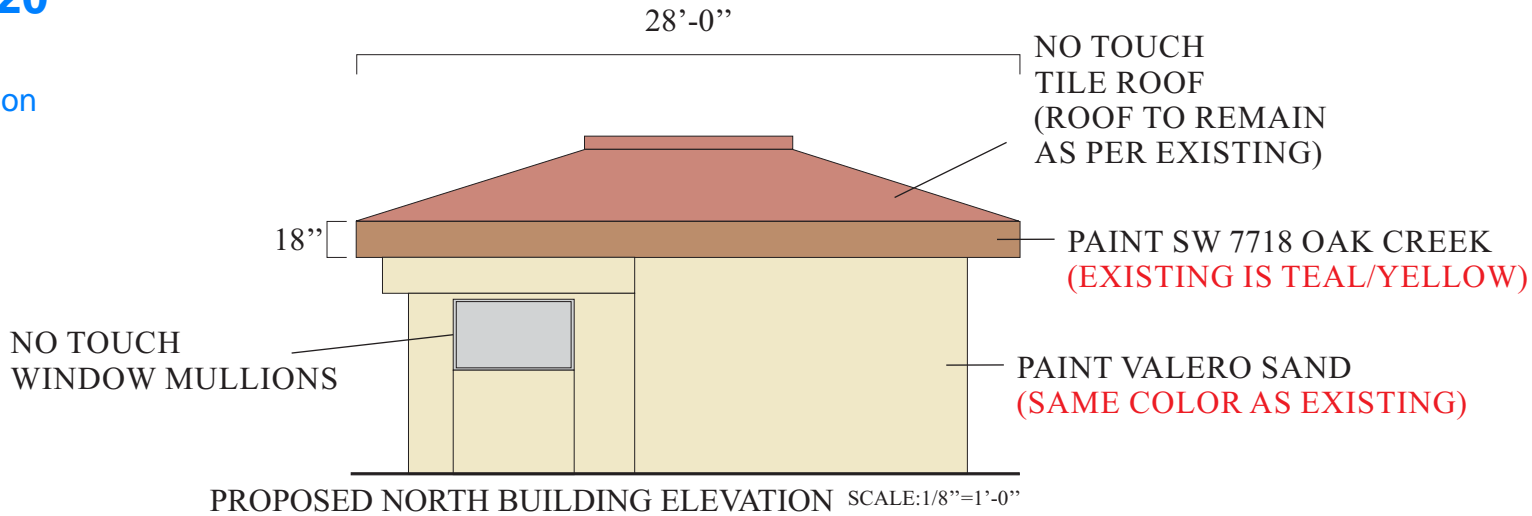
**Valero**

**5661 CALLE REAL  
GOLETA, CA 93117**

RECEIVED

October 22, 2020

City of Goleta  
Current Planning Division



NO TOUCH  
TILE ROOF  
(ROOF TO REMAIN  
AS PER EXISTING)



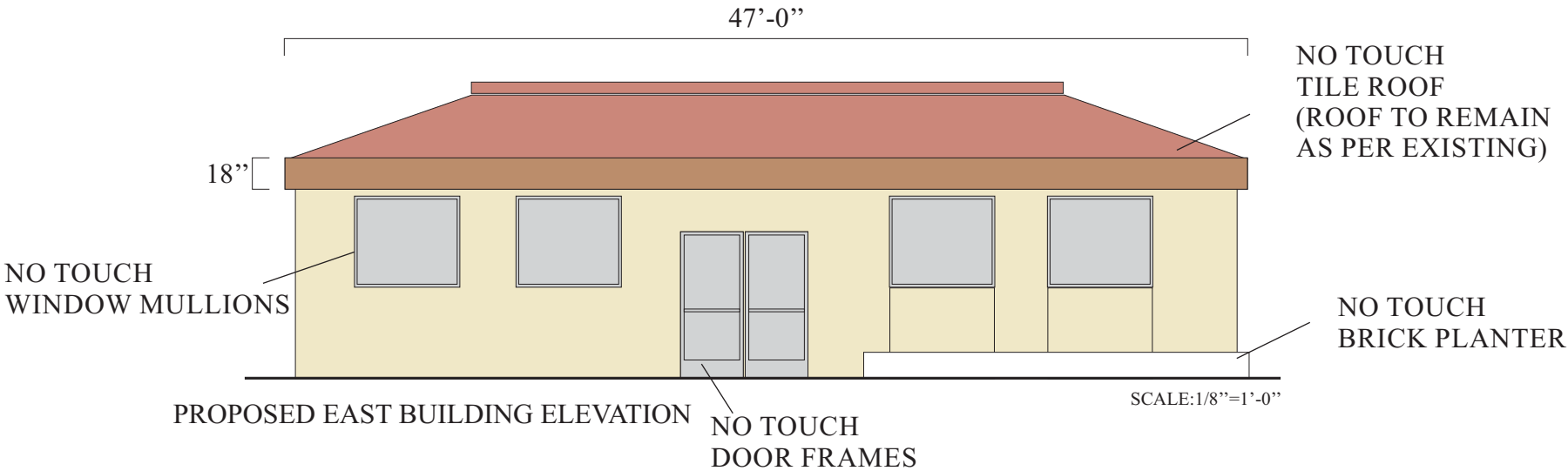
EXISTING EAST BUILDING ELEVATION

NOTES:  
REMOVE AND DISPOSE OF ALL EXISTING AD PANELS, BANNERS AND WINDOW DECALS  
PAINT ALL FOUR (4) BUILDING ELEVATIONS VALERO SAND, **BY CUSTOMER.**  
PAINT BUILDING FASCIA, ALL FOUR (4) ELEVATIONS, SW 7718 OAK CREEK, **BY CUSTOMER.**  
PAINT ALL EXISTING BUMPER POLES VALERO BLUE, **BY CUSTOMER.**  
PAINT ALL PREVIOUSLY PAINTED STOREFRONT CURBS (FACES ONLY) DARK GRAY, **BY CUSTOMER.**

PAINT ALL EXISTING BUMPER POLES  
VALERO BLUE, **BY CUSTOMER.**



**NOTE:**  
THESE DRAWINGS MAY NOT  
BE THE FINAL COLOR SCHEME  
AND APPROVED LAYOUT



**PRELIMINARY**

**PROPRIETARY INFORMATION.** The information disclosed in this document, including all drawings, designs and related materials, is the valuable and proprietary information of Sign Development Inc. It is provided solely for the purpose of evaluation for purchase and, without the express written authorization of Sign Development Inc., may not be disclosed or duplicated, in whole or in part, for any reason. Sign Development Inc. expressly reserves all patent, copyright and other proprietary rights to this document, including all design, manufacturing, reproduction, use, and sales rights thereto. © 2011 SIGN DEVELOPMENT INC.

**CUSTOMER APPROVAL**

SIGN AND PRINT FULL NAME

DATE

**NO. W6460** **PAGE: 5 OF 6**  
**DATE: 03.14.20SM**  
**REV: 03.19.20BA 04.15.20BA 04.30.20BA**  
**05.07.20BA 05.13.20BA 07.29.20SM**  
**10.22.20BA**

 **Sign Development Inc.**  
License #576277

Upland, CA 91786 (909) 920-5535

**Valero** 5661 CALLE REAL  
GOLETA, CA 93117



PAINT PREVIOUSLY PAINTED TRASH ENCLOSURE AND TRASH ENCLOSURE DOORS VALERO LIGHT GRAY. PAINT PREVIOUSLY PAINTED PERIMETER CURBS VALERO DARK GRAY. PAINT ALL BUMPER POLES VALERO BLUE. PAINT VENT PIPES VALERO LIGHT GRAY.



PAINT PREVIOUSLY PAINTED PERIMETER CURBS VALERO DARK GRAY. PAINT BUMPER POLES VALERO BLUE.

**ALL PAINTING OF YARD ITEMS TO BE HANDLED BY CUSTOMER**

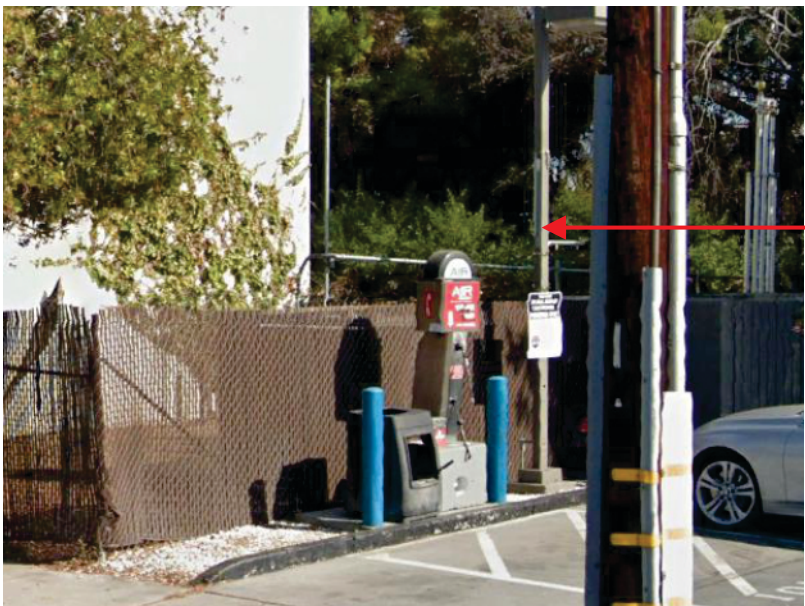


PAINT PREVIOUSLY PAINTED TRASH ENCLOSURE AND TRASH ENCLOSURE DOORS VALERO LIGHT GRAY. PAINT PREVIOUSLY PAINTED PERIMETER CURBS VALERO DARK GRAY. PAINT BUMPER POLES VALERO BLUE. PAINT VENT PIPES VALERO LIGHT GRAY.

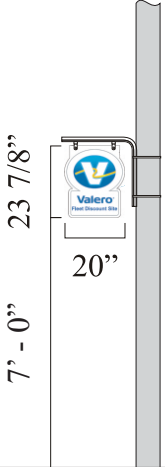


PAINT ISLAND BOLLARDS VALERO DARK GRAY, BY CUSTOMER.

**RECEIVED**  
**October 22, 2020**  
**City of Goleta**  
**Current Planning Division**



PAINT PREVIOUSLY PAINTED LIGHT STANDARDS VALERO LIGHT GRAY. PAINT PREVIOUSLY PAINTED PERIMETER CURBS VALERO DARK GRAY. PAINT BUMPER POLES VALERO BLUE. NO TOUCH AIR & WATER MACHINE.



PAINT PREVIOUSLY PAINTED PERIMETER CURBS VALERO DARK GRAY.

INSTALL FLEET SIGN TO LIGHT STANDARD TOWARDS STREET

**NOTE:**  
**THESE DRAWINGS MAY NOT**  
**BE THE FINAL COLOR SCHEME**  
**AND APPROVED LAYOUT**

**PRELIMINARY**



**Sign Development Inc.**

License #576277

Upland, CA 91786 (909) 920-5535



**5661 CALLE REAL**  
**GOLETA, CA 93117**

**PROPRIETARY INFORMATION.** The information disclosed in this document, including all drawings, designs and related materials, is the valuable and proprietary information of Sign Development Inc. It is provided solely for the purpose of evaluation for purchase and, without the express written authorization of Sign Development Inc., may not be disclosed or duplicated, in whole or in part, for any reason. Sign Development Inc. expressly reserves all patent, copyright and other proprietary rights to this document, including all design, manufacturing, reproduction, use, and sales rights thereto. © 2011 SIGN DEVELOPMENT INC.

**CUSTOMER APPROVAL**

SIGN AND PRINT FULL NAME

DATE

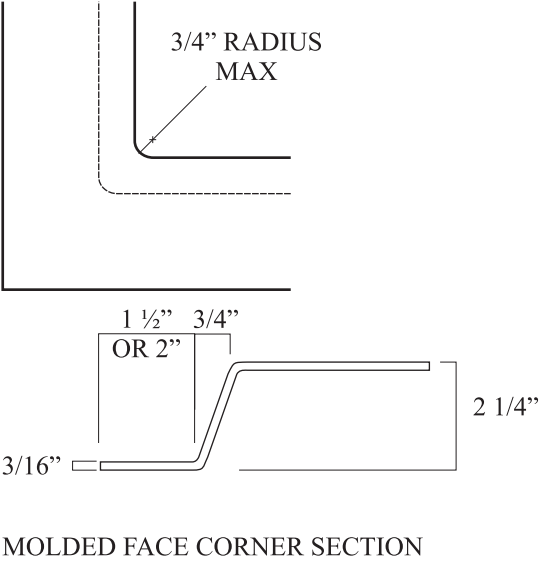
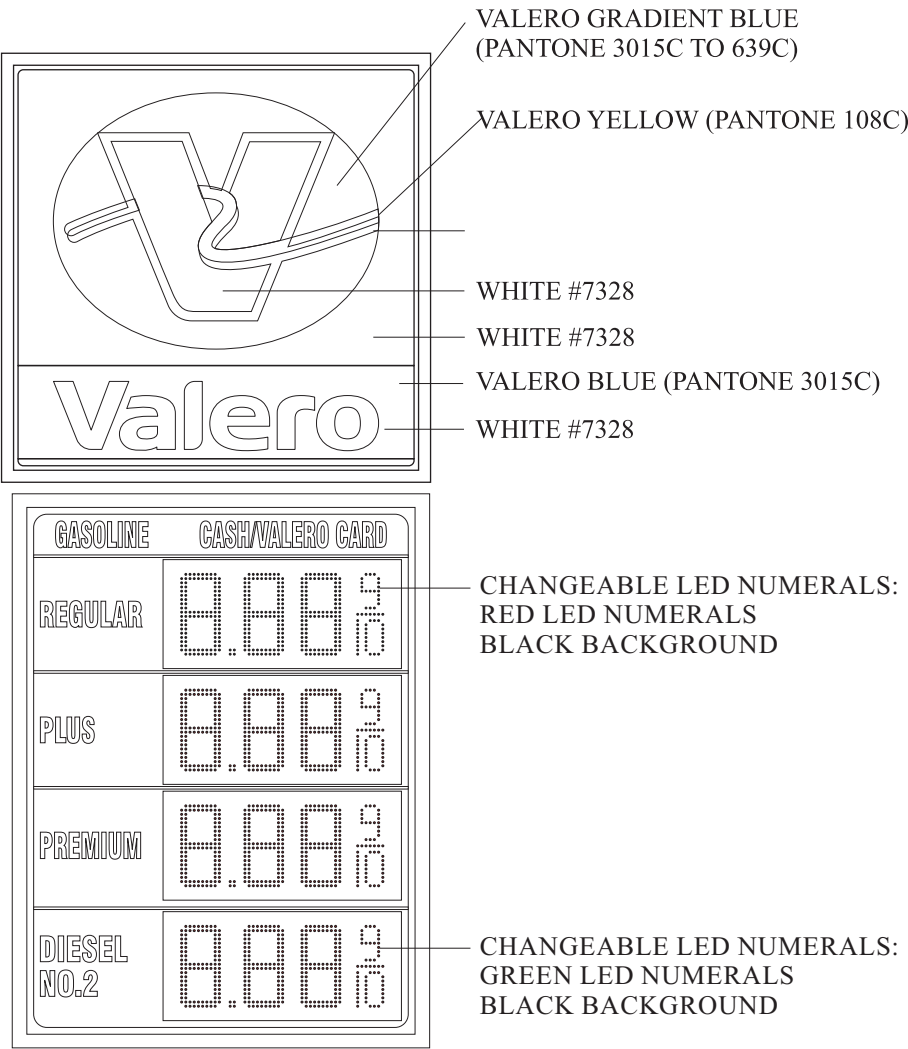
**NO. W6460**

**PAGE: 6 OF 6**

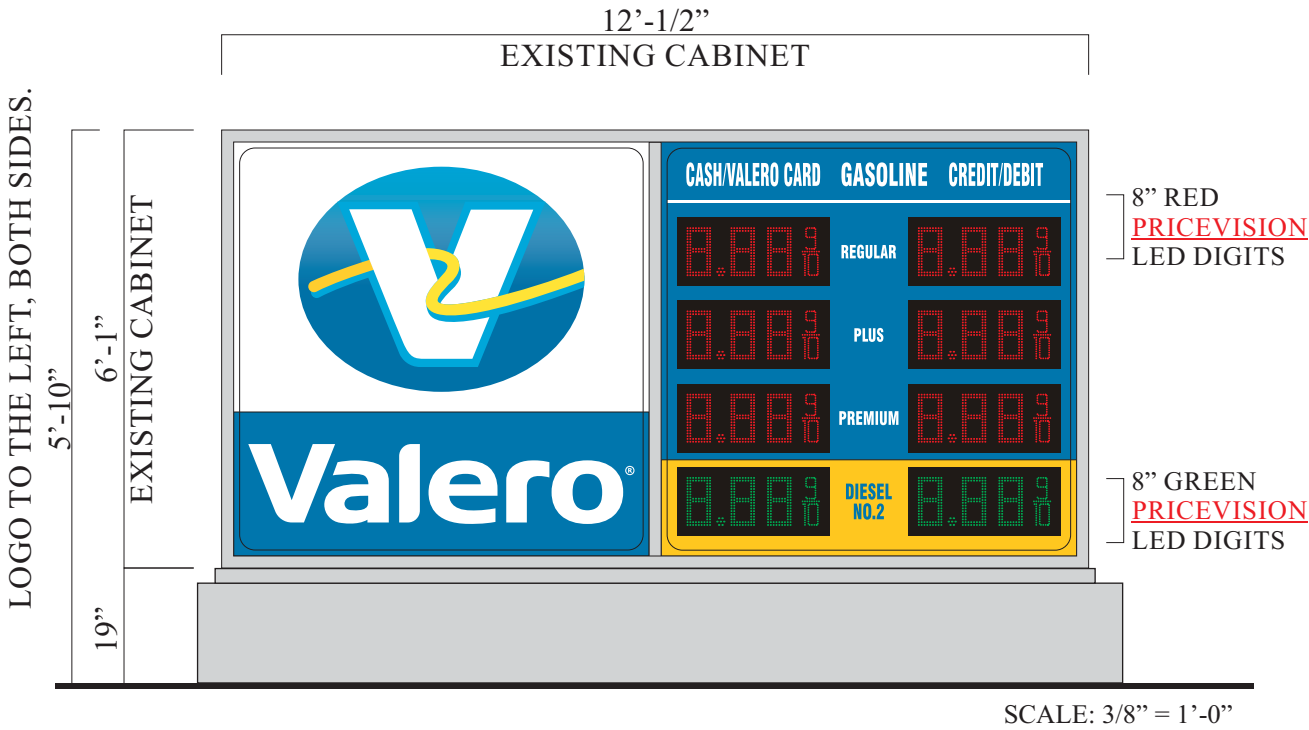
**DATE: 03.14.20SM**

**REV: 03.19.20BA 04.15.20BA 04.30.20BA**  
**05.07.20BA 05.13.20BA 07.29.20SM**

**10.22.20BA**



SIDE A:



- ① INSTALL NEW INTERNAL ILLUMINATION TO EXISTING CABINET.  
REFACE EXISTING D/F PRICE/ID SIGN.  
73.25 sq.ft.

REFACE/REPAINT EXISTING CABINET.

FACE MATERIALS: MOLDED POLYCARBONATE CLEAR  
FACES WITH TRANSLUCENT 3M VINYL  
SECOND SURFACE DECORATION

PAINT CABINET, RETAINERS, DIVIDER BARS, AND  
BASE TO MATCH VALERO LIGHT GRAY, **BY SDI**

GENERAL NOTE: ALL SIGNAGE TO BE MANUFACTURED  
AND INSTALLED ACCORDING TO LOCAL AND NATIONAL  
BUILDING AND ELECTRICAL CODES

**NOTE:**  
THESE DRAWINGS MAY NOT  
BE THE FINAL COLOR SCHEME  
AND APPROVED LAYOUT

PRELIMINARY



Sign Development Inc.

License #576277

Upland, CA 91786 (909) 920-5535

**PROPRIETARY INFORMATION.** The information disclosed in this document, including all drawings, designs and related materials, is the valuable and proprietary information of Sign Development Inc. It is provided solely for the purpose of evaluation for purchase and, without the express written authorization of Sign Development Inc., may not be disclosed or duplicated, in whole or in part, for any reason. Sign Development Inc. expressly reserves all patent, copyright and other proprietary rights to this document, including all design, manufacturing, reproduction, use, and sales rights thereto. © 2011 SIGN DEVELOPMENT INC.

CUSTOMER APPROVAL

SIGN AND PRINT FULL NAME

DATE

NO. W6460

PAGE:

DATE: 03.14.20SM

REV: 03.19.20BA 04.15.20BA 04.30.20BA  
05.07.20BA 05.13.20BA 07.29.20SM

10.22.20BA

**Valero** 5661 CALLE REAL  
GOLETA, CA 93117

NEW DISPENSERS TO BE FACTORY IMAGED

TYPICAL VALERO DISPENSER FOR REFERENCE

SDI TO PROVIDE AND INSTALL BONNETS, AND WARNING DECALS ONLY

\*\*\*\*\*VERY IMPORTANT\*\*\*\*\*  
MUST NOT DRILL INTO DISPENSERS  
WHEN INSTALLING VALANCES.  
MUST USE EXISTING BOLTS TO  
ATTACH BRACKETS AND VALANCES



DEALER TO ADVISE ON  
NEW DISPENSER TYPE AND MODEL

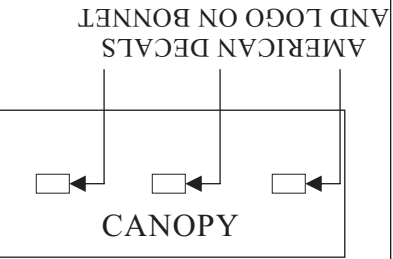
RECEIVED  
October 22, 2020  
City of Goleta  
Current Planning Division



EXISTING DISPENSER

7 1/2" x 36" (1.87 x 6)	11.25 sq.ft.
3" x 20 1/2" (0.42 x 6)	2.52 sq.ft.
11" x 14" (1.06 x 6)	6.36 sq.ft.

CALLE REAL



- Dispenser Valance
- Dispenser Door
- Dispenser End Valance
- Valero copy
- Valero copy
- Valero logo

USE TEMPLATE  
PROVIDED FOR  
PLACEMENT

58"

NOTE:  
THESE DRAWINGS MAY NOT  
BE THE FINAL COLOR SCHEME  
AND APPROVED LAYOUT

PRELIMINARY

 **Sign Development Inc.**  
License #576277

Upland, CA 91786 (909) 920-5535

**PROPRIETARY INFORMATION.** The information disclosed in this document, including all drawings, designs and related materials, is the valuable and proprietary information of Sign Development Inc. It is provided solely for the purpose of evaluation for purchase and, without the express written authorization of Sign Development Inc., may not be disclosed or duplicated, in whole or in part, for any reason. Sign Development Inc. expressly reserves all patent, copyright and other proprietary rights to this document, including all design, manufacturing, reproduction, use, and sales rights thereto. © 2011 SIGN DEVELOPMENT INC.

CUSTOMER APPROVAL

SIGN AND PRINT FULL NAME

DATE

NO. W6460 PAGE: DISP.  
DATE: 03.14.20SM  
REV: 03.19.20BA 04.15.20BA 04.30.20BA  
05.07.20BA 05.13.20BA 07.29.20SM  
10.22.20BA

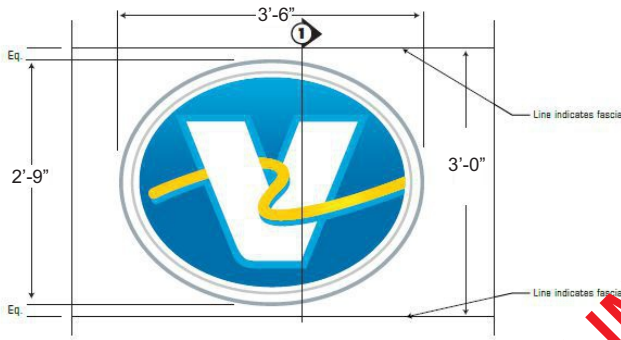
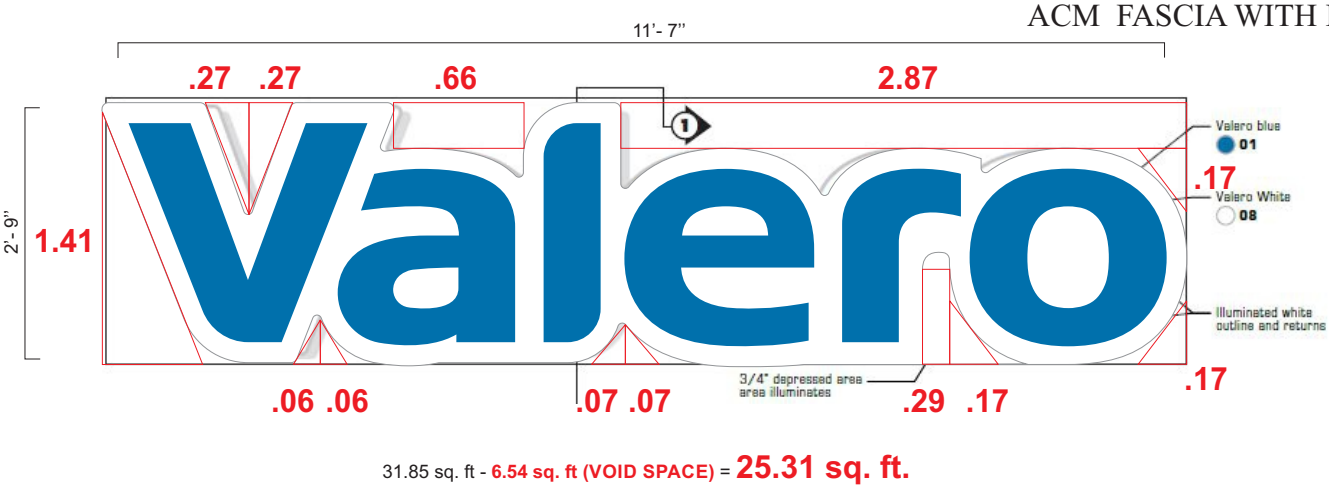
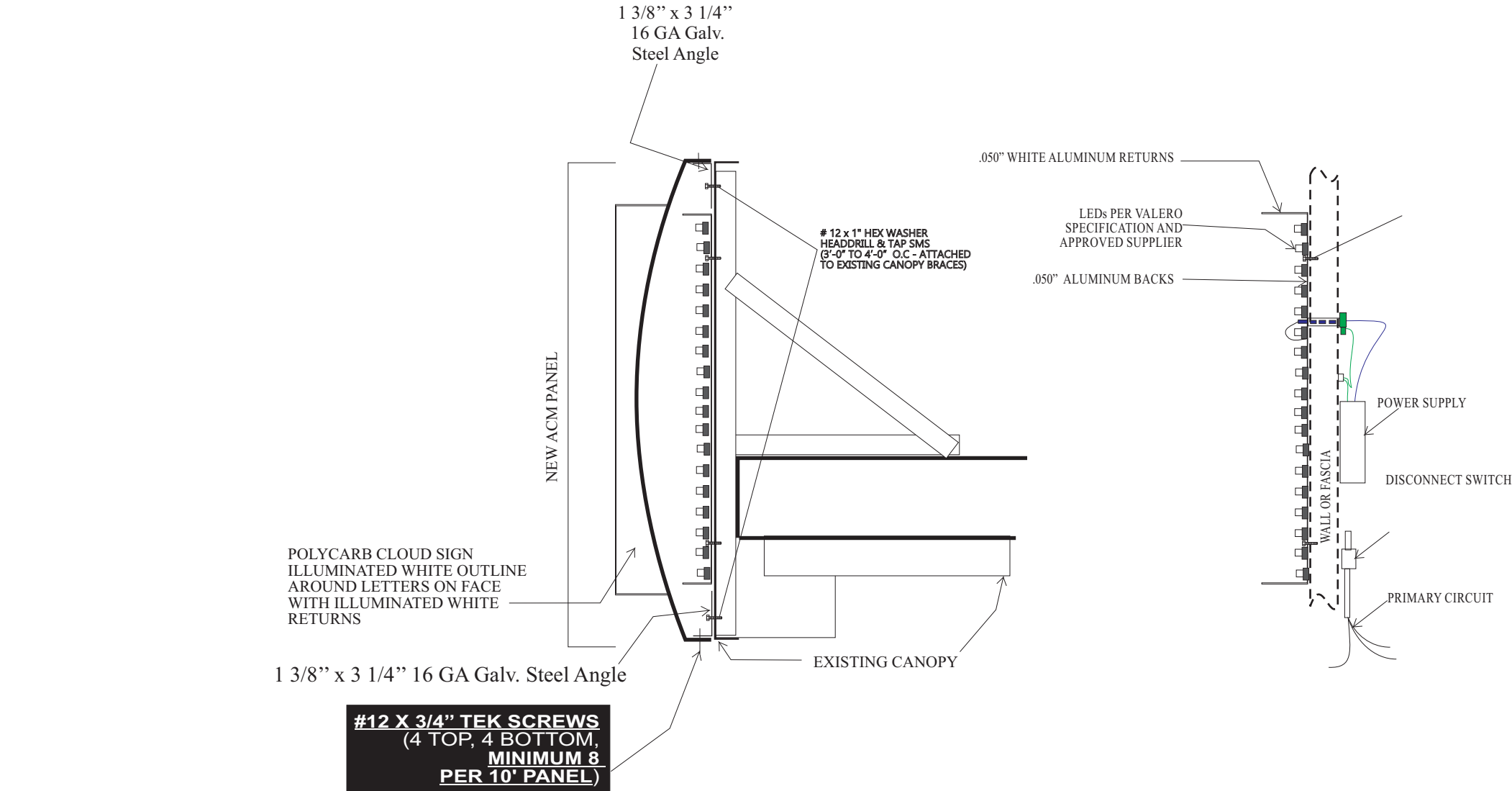
**Valero** 5661 CALLE REAL  
GOLETA, CA 93117

RECEIVED

October 22, 2020

City of Goleta  
Current Planning Division

WORDMARK & LOGO DETAILS LED ILLUMINATION



NOTE:  
THESE DRAWINGS MAY NOT  
BE THE FINAL COLOR SCHEME  
AND APPROVED LAYOUT

PRELIMINARY

 **Sign Development Inc.**  
License #576277

Upland, CA 91786 (909) 920-5535

**PROPRIETARY INFORMATION.** The information disclosed in this document, including all drawings, designs and related materials, is the valuable and proprietary information of Sign Development Inc. It is provided solely for the purpose of evaluation for purchase and, without the express written authorization of Sign Development Inc., may not be disclosed or duplicated, in whole or in part, for any reason. Sign Development Inc. expressly reserves all patent, copyright and other proprietary rights to this document, including all design, manufacturing, reproduction, use, and sales rights thereto. © 2011 SIGN DEVELOPMENT INC.

CUSTOMER APPROVAL

SIGN AND PRINT FULL NAME

DATE

NO. W6460

PAGE:

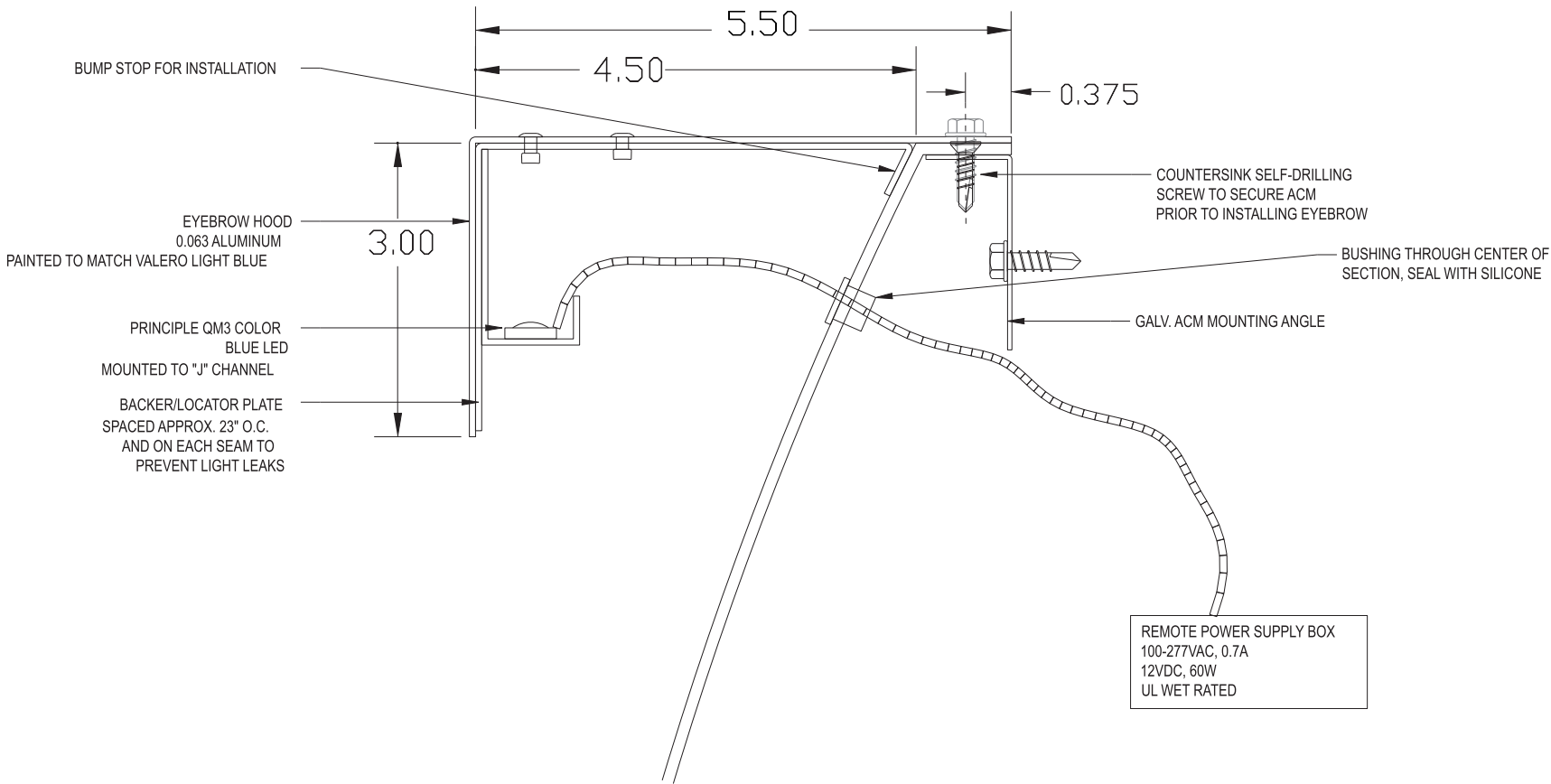
DATE: 03.14.20SM

REV: 03.19.20BA 04.15.20BA 04.30.20BA  
05.07.20BA 05.13.20BA 07.29.20SM

10.22.20BA

**Valero** 5661 CALLE REAL  
GOLETA, CA 93117

EYEBROW SECTION VIEW DETAILS LED ILLUMINATION



NOTE:  
THESE DRAWINGS MAY NOT  
BE THE FINAL COLOR SCHEME  
AND APPROVED LAYOUT

PRELIMINARY



Sign Development Inc.

License #576277

Upland, CA 91786 (909) 920-5535

**PROPRIETARY INFORMATION.** The information disclosed in this document, including all drawings, designs and related materials, is the valuable and proprietary information of Sign Development Inc. It is provided solely for the purpose of evaluation for purchase and, without the express written authorization of Sign Development Inc., may not be disclosed or duplicated, in whole or in part, for any reason. Sign Development Inc. expressly reserves all patent, copyright and other proprietary rights to this document, including all design, manufacturing, reproduction, use, and sales rights thereto. © 2011 SIGN DEVELOPMENT INC.

CUSTOMER APPROVAL

SIGN AND PRINT FULL NAME

DATE

NO. W6460

PAGE:

DATE: 03.14.20SM

REV: 03.19.20BA 04.15.20BA 04.30.20BA  
05.07.20BA 05.13.20BA 07.29.20SM

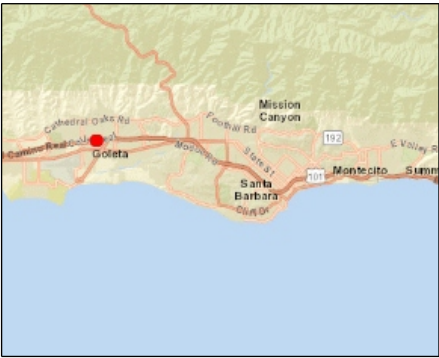
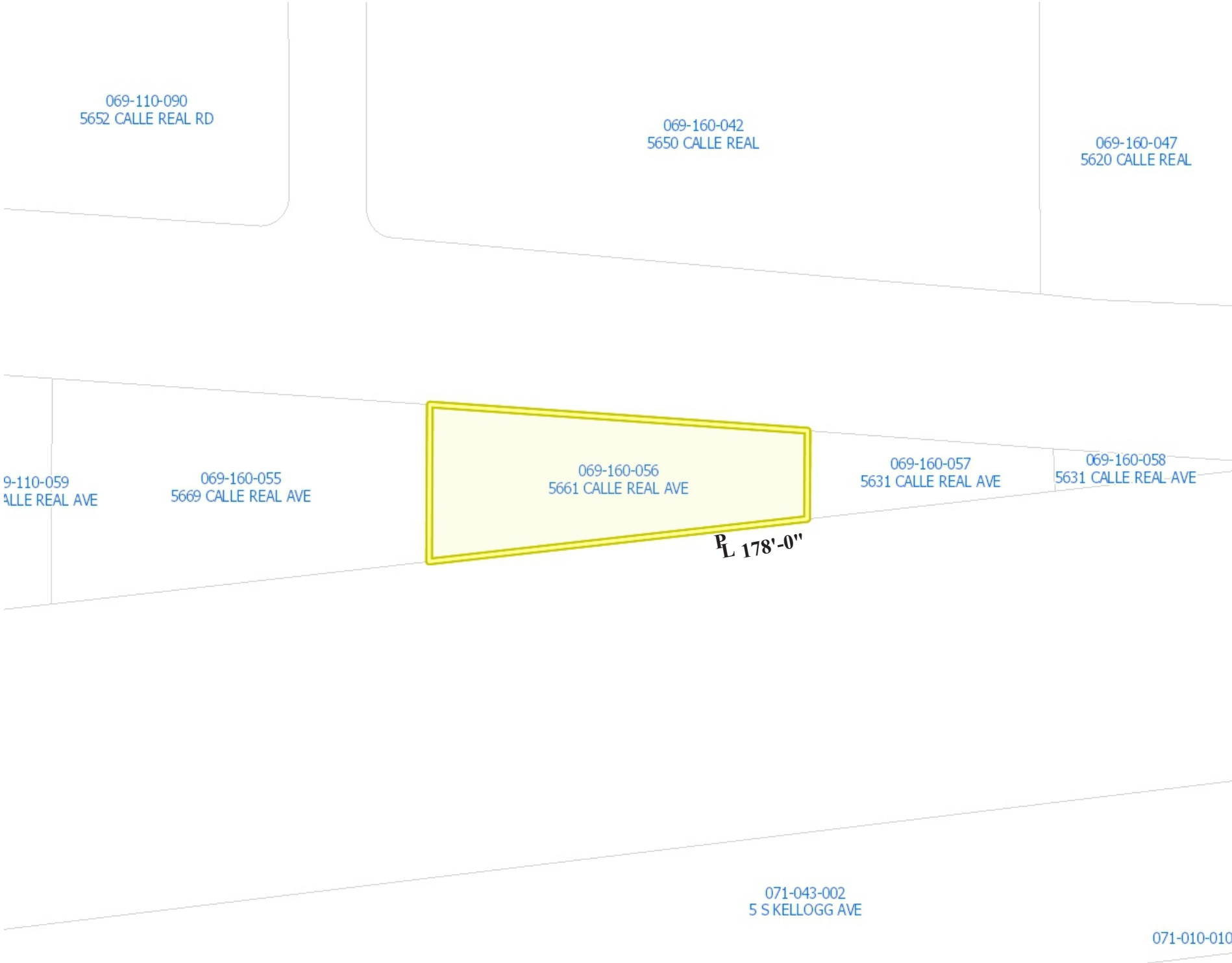
10.22.20BA

Valero

5661 CALLE REAL  
GOLETA, CA 93117



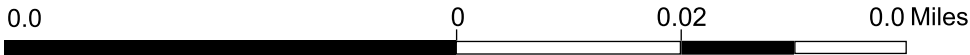
City of Santa Barbara - MAPS



Legend

- City Limits
- Assessors Parcels City
- World Street Map

1: 1,128



WGS\_1984\_Web\_Mercator\_Auxiliary\_Sphere  
© City of Santa Barbara      Reported on 07/28/2020 11:49 AM

MAP DISCLAIMER

This service has been provided to allow a visual display of City information. Every effort has been made to ensure the accuracy of the map and data. The City of Santa Barbara assumes no responsibility arising from the use of this information. THE MAPS AND ASSOCIATED DATA ARE PROVIDED WITHOUT A WARRANTY OF ANY KIND. This map was created using the City of Santa Barbara Mapping Analysis and Printing System application.

Notes

Enter Map Description

RECEIVED  
October 22, 2020  
City of Goleta  
Current Planning Division

PRELIMINARY

NOTE:  
THESE DRAWINGS MAY NOT  
BE THE FINAL COLOR SCHEME  
AND APPROVED LAYOUT



Sign Development Inc.

License #576277

Upland, CA 91786    (909) 920-5535

**PROPRIETARY INFORMATION.** The information disclosed in this document, including all drawings, designs and related materials, is the valuable and proprietary information of Sign Development Inc. It is provided solely for the purpose of evaluation for purchase and, without the express written authorization of Sign Development Inc., may not be disclosed or duplicated, in whole or in part, for any reason. Sign Development Inc. expressly reserves all patent, copyright and other proprietary rights to this document, including all design, manufacturing, reproduction, use, and sales rights thereto. © 2011 SIGN DEVELOPMENT INC.

CUSTOMER APPROVAL

SIGN AND PRINT FULL NAME

DATE

NO. W6460

PAGE:

DATE: 03.14.20SM

REV: 03.19.20BA 04.15.20BA 04.30.20BA  
05.07.20BA 05.13.20BA 07.29.20SM

10.22.20BA

Valero

5661 CALLE REAL  
GOLETA, CA 93117