

PSY414 LED

Bollards and Pathway Luminaires

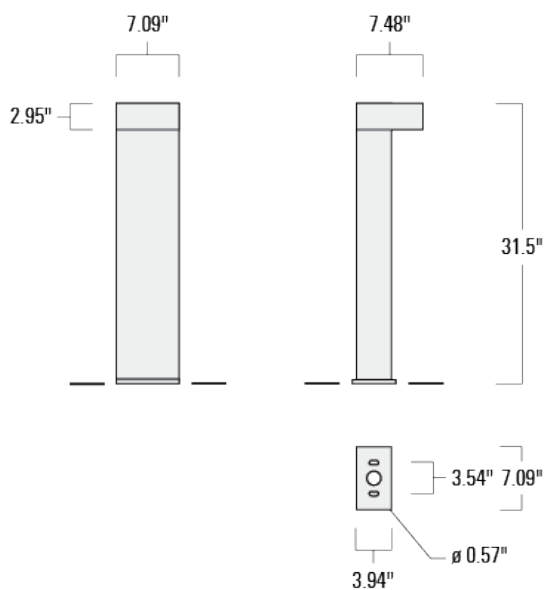
1/5

we-ef

RECEIVED

**November 06,
2020**

City of Goleta
Current Planning Division



Description

IP66. Class I. IK10. Marine-grade, all-aluminium construction. Pole section features galvanised steel reinforcement core. 5CE superior corrosion protection including PCS hardware. Silicone CCG® Controlled Compression Gasket. Polycarbonate main lens. Integral EC electronic converter in thermally-separated compartment. CAD-optimised optics for superior illumination and glare control OLC® One LED Concept. Factory installed LED circuit board. Pre-wired post complete with cable connecting box and fuse for mains connection.


PSY414 LED

Bollards and Pathway Luminaires

2/5

Specifications

Material Specification

Body:	Marine-grade, all-aluminium construction. Pole section features galvanised steel reinforcement core
Colours:	<div><div></div> RAL9004 Black</div> <div><div></div> RAL9007 Grey Metallic</div> <div><div></div> RAL9016 White</div> <div><div></div> RAL8019 Dark Bronze</div>
 Quick Ship	Quickship features a one week ship time for Steplights and two week ship time for the rest of our Core products. All applicable information must be included for orders to be processed and colors must be in one of our 4 standard finishes. A maximum order quantity of 30 pieces applies.
Gasket:	Silicone CCG_R_ Controlled Compression Gasket
Fasteners:	PCS hardware
Ingress protection:	IP66
Impact protection:	IK10
Corrosion protection:	5CE
Listings:	ETL Listed. Suitable for wet locations.

Electrical Specification

Power supply:	Integral [ECG] electronic driver 120V-277V. 0-10V dimmable, to be specified with order.
Driver / Ballast:	Integral EC electronic converter

Lifetime

LED >60,000 h Ta 25°(L70/B10)

Control gear >50,000 h Ta 25°

we-ef

RECEIVED

**November 06,
2020**

City of Goleta
Current Planning Division

DESCRIPTION

Lanterra 1004-A1 (one head) is a 4.25" O.D., line voltage Accent Flood light with dimmable LED. It is available with adjustable rear center swivel with lock rotation providing 180 degree tilt and 340 degree rotation. The luminaire comes with various mounting, field replaceable optics. It also comes with various lens, louvers and colors or dichroic filters, which can combine up to two at once to create multiple lighting effects. The fixture may be used indoors or outdoors and carries IP66 rating.

SPECIFICATION FEATURES

Material

Housing, hood and mounting stem are precision-machined from corrosion resistant billet stock 6061-T6 aluminum.

Finish

Fixtures constructed from 6061-T6 aluminum are double protected by an ROHS complaint chemical film undercoating and polyester powder coat paint finish, surpassing the rigorous demands of the outdoor environment. A variety of standard colors are available.

Hood

Hood is removable and accepts up to two internal accessories at once (lenses, louvers and filters) to achieve multiple lighting effects. Weep holes prevents water and mineral stains from collecting on the lens, even in the straight up position. The flush lens design reduces fixture length, minimizes debris collection and prevents water and mineral stains from collecting on the lens.

Gasket

Housing and hood are sealed with a high

temperature silicone O-ring gasket to prevent water intrusion.

Lens

Tempered glass lens, factory sealed with high temperature silicone O-ring to prevent water intrusion and breakage due to thermal shock.

Hardware

Stainless steel hardware is standard to provide maximum corrosion resistance.

Electrical

Long life LED system coupled with electronic driver (120-277V/50-60Hz) is compatible with TRIAC (Leading Edge Dimming), ELV (Trailing Edge Dimming) and 0-10V dimming to deliver optical performance. It will operate in -30°C to 50°C unless noted otherwise. The driver incorporates surge protection. Light can be dimmed from 100-1% while maintaining constant CCT. LED's are available in 2700K, 3000K, 3500K at 90CRI and 97CRI, 4000K at 80CRI and 97CRI, 5000K at 80CRI and are industry leading high output with 87% lumen maintenance at 60,000hrs.

Catalog

Project

Comments

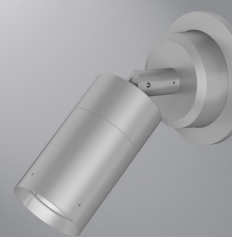
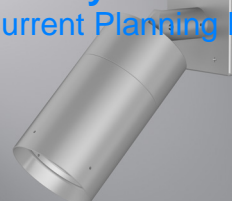
Prepared by

Type

Date

RECEIVED
November 06, 2020

City of Goleta
Current Planning Division



Lanterra 1004

LED
INTERIOR / EXTERIOR
ACCENT FLOOD LIGHT
CERTIFICATION DATA

cULus - 1598

Wet Location Listed - IP66

LM79/LM80 Compliant

ROHS Compliant

10W LED, L70/102,000 @ 25° Celcius

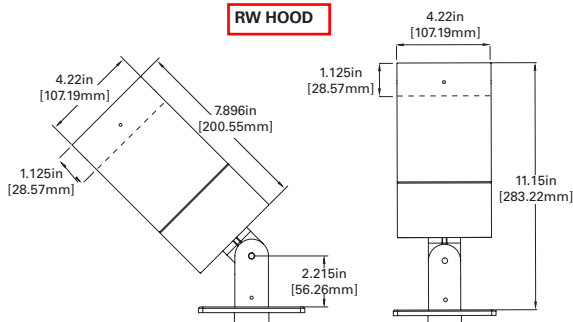
20W LED, L70/102,000 @ 25° Celcius

30W LED, L70/102,000 @ 25° Celcius

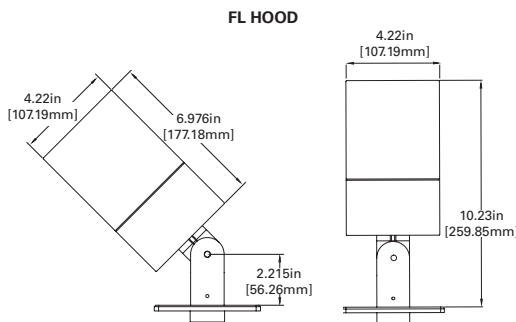


DIMENSIONS

RW HOOD



FL HOOD



ORDERING INFORMATION

SERIES	NUMBER OF HEADS	KNUCKLE STYLE	HOOD	LED CCT & CRI	FIELD REPLACEABLE OPTIC	FINISH	LIGHT LEVEL	VOLTAGE	MOUNTING	OPTIONS
1004	A1 1 Head	RCS Rear Center Swivel with Lock Rotation	RW Standard-Recessed Lens with weep holes - Outdoor RI Recessed Lens with no weep holes - Indoor FL Flush lens hood	Standard CRI LED2790 - 2700K, 90 CRI LED 3090 - 3000K, 90 CRI LED 3590 - 3500K, 90 CRI Premium CRI LED 2797 - 2700K, 97 CRI LED 3097 - 3000K, 97 CRI LED 3597 - 3500K, 97 CRI LED 4097 - 4000K, 97 CRI	S Spot M Medium F Flood W Wide	Standard Paint Finish BK Black BZ Bronze CS City Silver WT White	L1 Light Level 1 (10W) L2 Light Level 2 (20W) L3 Light Level 3 (30W)	UNV 120-277V	Surface Mount - Wall, Ceiling, Ground RSM - Round Surface Mount - mounts directly to junction box Thermal Limitations (unless otherwise noted 50C) 1004-A1-xxx-L3-xxx-RSM (45C) Recessed - Ground Mount MB - Ground Mount Recessed Box - Rectangular Housing 10x6x6 (MB Box) Thermal Limitations (unless otherwise noted 50C) Remote Driver Housing WRR ^{1/4} - Remote Driver Housing - Round Wall WRS ^{1/4} - Remote Driver Housing - Square Wall Plate TSR ^{2/4} - Tree Strap Mount (1-4) Thermal Limitations (unless otherwise noted 50C) 1004-A1-xxx-L3-xxx-WRx (45C) Integral Driver Mount WIS ^{1/3} - Wall Integral Driver Plate Thermal Limitations (unless otherwise noted 45C)	SVPD2 ³ Standalone integral sensor

Notes: 1. Only available for single head option (A1)
2. L3 option not available

3. Only available for single head option (A1) with RSM only
4. Remote Driver up to 60', For L3 (30W) remote distance up to 15'

November 06,
2020City of Goleta
Current Planning Division


1-800-323-5664
M-F 8:00am - 4:30pm CT

[Home](#) | [Free Catalog](#) | [About Us](#) | [Contact Us](#) | [FAQs](#) | [Site Map](#)


QuickShip
Popular Products, Right Away

[Click Here to Enable Options](#)

Orion™ | Bike Racks with Round Tubing




Model ORN-2-SF-P | Patriot Blue




Surface Mount Round Flange
In-ground Mount

Matching Products




Orion™ Bike Racks Round Tubing with Lean Bars
Orion™ Bike Racks Square Tubing

Take the Initiative to Make Cyclists Feel Welcome

The Orion™ bike racks make it easy for your community to become bicycle friendly in style. Arranged in rows of various colors, they are sure to attract attention and turn many frowns upside down. These bike racks are capable of holding two bikes with the option to mount at front and rear wheel.

The 2-3/8" round tubing bike racks are available in a Galvanized, Powder-Coated, Electro Polished Stainless Steel, and Satin #4 Stainless Steel finish. Powder-Coated color options are available as shown. Available with round flanges. Drop In Anchors available for concrete installation.

Galvanized Finish

The hot dip galvanizing process results in an effective corrosion resistant surface with multi-varied spangle appearance.

Powder-Coated Color Options






QuickShip

[Enable Options](#)

► [Need a Bike Rack Fast?](#)
► [Click Here to Show Models, Colors and Options that are QuickShip Ready.](#)

▼ **Item Specific Details Available on Linked Model Numbers Below**



[Tweet](#)

Orion™ Bike Racks 2-3/8" Round Tubing Galvanized					Qty
ORN-2-IG-G	In-ground Mount		(35 lbs)	\$239.00	<input type="text"/>
ORN-2-SF-G	Surface Mount		(32 lbs)	\$289.00	<input type="text"/>

Orion™ Bike Racks 2-3/8" Round Tubing Powder-Coated					Qty
ORN-2-IG-P	In-ground Mount	Choose Color	▼	(35 lbs) \$239.00	<input type="text"/>
ORN-2-SF-P	Surface Mount	Choose Color	▼	(32 lbs) \$289.00	<input type="text"/>

Orion™ Bike Racks 2-3/8" Round Tubing Electro Polished Stainless Steel					Qty
ORN-2-IG-ES	In-ground Mount		(35 lbs)	\$649.00	<input type="text"/>
ORN-2-SF-ES	Surface Mount		(32 lbs)	\$709.00	<input type="text"/>

Orion™ Bike Racks 2-3/8" Round Tubing Satin #4 Stainless Steel					Qty
ORN-2-IG-S	In-ground Mount		(35 lbs)	\$679.00	<input type="text"/>
ORN-2-SF-S	Surface Mount		(32 lbs)	\$739.00	<input type="text"/>

Drop In Anchors for Round Flanges					Qty
					<input type="text"/>

RECEIVED

November 06,
2020

City of Goleta
Current Planning Division

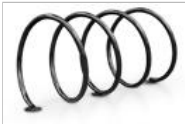
DA1220-3-Z	Drop In Anchor - 3 Pack	Zinc Plated	(1 lbs)	\$22.79	<input type="text"/>
DA1220-4-Z	Drop In Anchor - 4 Pack	Zinc Plated	(1 lbs)	\$29.09	<input type="text"/>
DA1220-6-Z	Drop In Anchor - 6 Pack	Zinc Plated	(1 lbs)	\$42.49	<input type="text"/>
DA1220-25-Z	Drop In Anchor - 25 Pack	Zinc Plated	(1 lbs)	\$165.29	<input type="text"/>
DA1220-3-S	Drop In Anchor - 3 Pack	Stainless Steel	(1 lbs)	\$29.09	<input type="text"/>
DA1220-4-S	Drop In Anchor - 4 Pack	Stainless Steel	(1 lbs)	\$37.09	<input type="text"/>
DA1220-6-S	Drop In Anchor - 6 Pack	Stainless Steel	(1 lbs)	\$54.19	<input type="text"/>
DA1220-25-S	Drop In Anchor - 25 Pack	Stainless Steel	(1 lbs)	\$213.69	<input type="text"/>

(Prices F.O.B. Origin)

[Bulk Inquiry](#)

[Add to Cart](#)

Related Products



[Bike Coil
Bicycle Racks](#)



[Cyc Bicrac™
Cycle Rack](#)



[Creature Can Series
Frog | Litter Receptacle](#)



[Two Person
Lat Pull Down](#)

[Previous Product](#)

Copyright and Disclaimer © 1993-2020, Belson Outdoors, LLC

[Next Product](#)



[Home](#) | [Free Catalog](#) | [About Us](#) | [Contact Us](#) | [FAQs](#) | [Privacy Policy](#) | [Site Map](#) | [Shopping Cart](#)

627 Amersale Drive | Naperville, IL 60563 | (800) 323-5664 | Fax: (630) 897-0573 | sales@belson.com



PRODUCTS

RESOURCES

CONTACT US

GET QUOTE



1

Search

Bike Locker – 300 Series

DOCUMENTS DOWNLOADS GET QUOTE
Warranty

RECEIVED

November 06,
2020

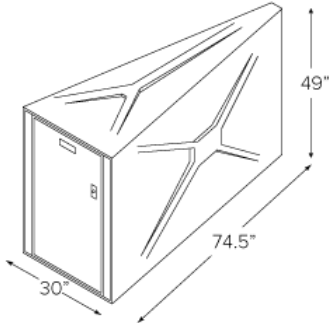
City of Goleta
Current Planning Division



Stackable (300 Series Only)

This feature allows you to stack the lockers to provide twice the parking in the same foot print as one unit. The upper level lockers are specially built for this application and their locks are placed lower down on the door for easier access. There is an adapter flange used to follow the contour of the top of the lower units.

301P



Available Colors

Tan

Medium Gray

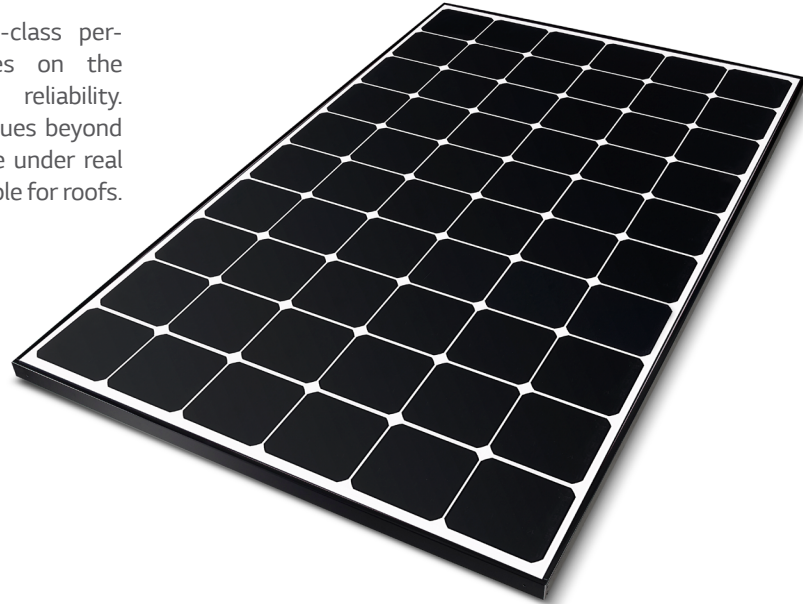


Padlock Handle

Heavy duty padlock system that will accommodate high security padlocks (padlock not included) No Extra Charge

370W | 365W

LG NeON[®] R is powerful solar module that provides world-class performance. A new cell structure that eliminates electrodes on the front maximizes the utilization of light and enhances reliability. LG NeON[®] R is a result of LG's efforts to increase customer's values beyond efficiency. LG NeON[®] R features enhanced durability, performance under real-world conditions, an enhanced warranty and aesthetic design suitable for roofs.



Features



Aesthetic Roof

LG NeON[®] R has been designed with aesthetics in mind: the lack of any electrodes on the front creates an improved, modern aesthetic.



Extended Product Warranty

LG has extended the product warranty of the LG NeON[®] R to 25 years which is top level of the industry.



Better Performance on a Sunny Day

LG NeON[®] R now performs better on sunny days, thanks to its improved temperature coefficient.



More generation per square meter

The LG NeON[®] R has been designed to significantly enhance its output, making it efficient even in limited space.

About LG Electronics

LG Electronics is a global big player, committed to expanding its operations with the solar market. The company first embarked on a solar energy source research program in 1985, supported by LG Group's vast experience in the semi-conductor, LCD, chemistry and materials industries. In 2010, LG Solar successfully released its first MonoX[®] series to the market, which is now available in 32 countries. The NeON[®] (previous MonoX[®] NeON), NeON[®]2, NeON[®]2 BiFacial won the "Intersolar AWARD" in 2013, 2015 and 2016, which demonstrates LG Solar's lead, innovation and commitment to the industry.



November 06.

2020

City of Goleta
Current Planning Division

General Data

Cell Properties(Material / Type)	Monocrystalline / N-type
Cell Maker	LG
Cell Configuration	60 Cells (6 x 10)
Module Dimensions(L x W x H)	1,700mm x 1,016mm x 40mm
Weight	17.5 kg
Glass(Thickness / Material)	2.8mm / Tempered Glass with AR Coating
Backsheet(Color)	White
Frame(Material)	Anodized Aluminium
Junction Box(Protection Degree)	IP68 with 3 Bypass Diodes
Cables(Length)	1,000mm x 2EA
Connector(Type / Maker)	MC4 / MC

Certifications and Warranty

Certifications	IEC 61215-1/-1-1/2:2016, IEC 61730-1/2:2016
	UL 1703
	ISO 9001, ISO 14001, ISO 50001
	OHSAS 18001, PV CYCLE
Salt Mist Corrosion Test	IEC 61701:2012 Severity 6
Ammonia Corrosion Test	IEC 62716:2013
Module Fire Performance	Type 1
Fire Rating	Class C (UL 790)
Product Warranty	25 Years
Output Warranty of Pmax	Linear Warranty*

* 1) First year: 98% 2) After 1st year: 0.3% annual degradation 3) 25 years: 90.8%

Temperature Characteristics

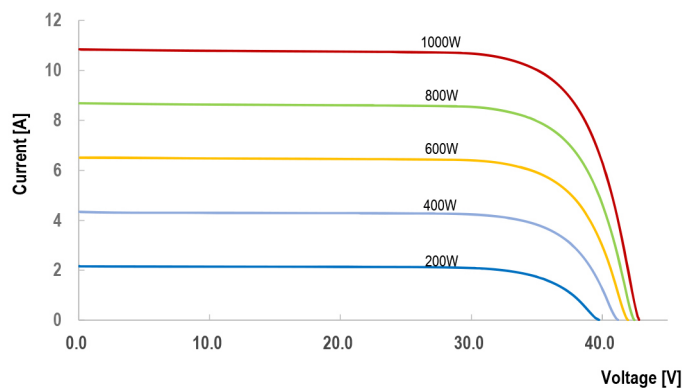
NMOT*	[°C]	44 ± 3
Pmax	[%/°C]	-0.30
Voc	[%/°C]	-0.24
Isc	[%/°C]	0.037

* NMOT(Nominal Module Operating Temperature) : Irradiance 800 W/m², Ambient temperature 20 °C, Wind speed 1 m/s, Spectrum AM 1.5

Electrical Properties (NMOT)

Model		LG370Q1C-V5	LG365Q1C-V5
Maximum Power (Pmax)	[W]	279	275
MPP Voltage (Vmpp)	[V]	36.9	36.6
MPP Current (Impp)	[A]	7.55	7.51
Open Circuit Voltage (Voc)	[V]	40.3	40.2
Short Circuit Current (Isc)	[A]	8.71	8.70

I-V Curves



Electrical Properties (STC*)

Model		LG370Q1C-V5	LG370Q1C-V5
Maximum Power (Pmax)	[W]	370	365
MPP Voltage (Vmpp)	[V]	37.0	36.7
MPP Current (Impp)	[A]	10.01	9.95
Open Circuit Voltage (Voc, ±5%)	[V]	42.3	42.6
Short Circuit Current (Isc, ±5%)	[A]	10.82	10.80
Module Efficiency	[%]	21.4	21.1
Power Tolerance	[%]	0 ~ +3	

* STC (Standard Test Condition): Irradiance 1000 W/m², Cell Temperature 25 °C, AM 1.5

Operating Conditions

Operating Temperature	[°C]	-40 ~ +90
Maximum System Voltage	[V]	1,000
Maximum Series Fuse Rating	[A]	20
Mechanical Test Load(Front)	[Pa / psf]	5,400 / 113
Mechanical Test Load(Rear)	[Pa / psf]	4,000 / 83.5

* Test Load = Design x Safety Factor(1.5)

Packaging Configuration

Number of Modules Per Pallet	[EA]	25
Number of Modules Per 40ft HQ Container	[EA]	650
Packaging Box Dimensions (L x W x H)	[mm]	1,750 x 1,120 x 1,221
Packaging Box Gross Weight	[kg]	473

Dimensions (mm / inch)

