

HOLLIPAT PARKING AMENDMENT

STREET IMPROVEMENT PLANS

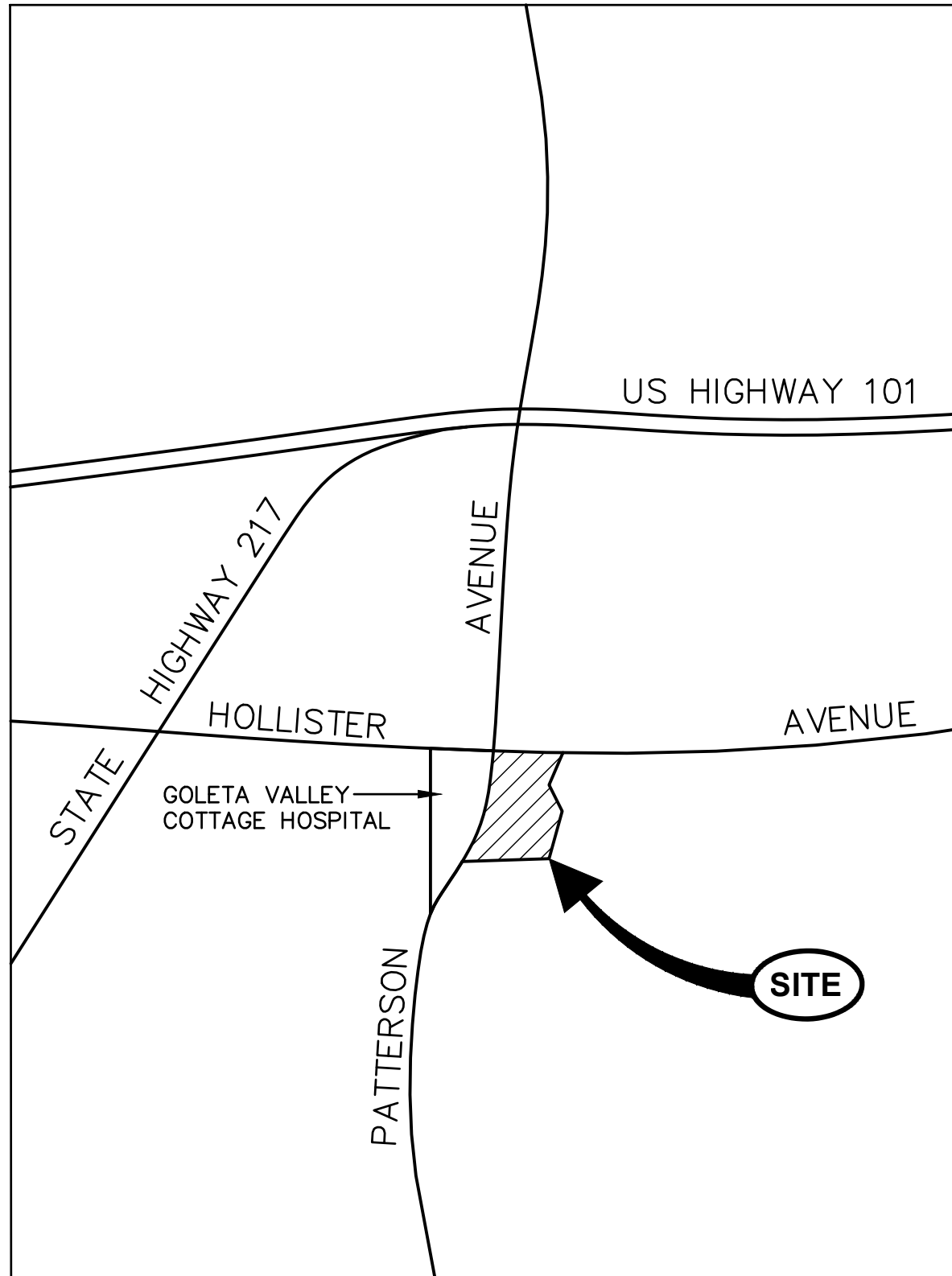
CITY OF GOLETA, CALIFORNIA

LIST OF SYMBOLS:

| | |
|-----------|--|
| AC | ASPHALTIC CONCRETE |
| ACP | ASBESTOS CEMENT PIPE |
| AB | AGGREGATE BASE |
| BC | BEGIN CURVE |
| BCR | BEGIN CURB RETURN |
| BD | BASEMENT DRAIN |
| BFV | BUTTERFLY VALVE |
| BM | BENCHMARK |
| BV | BALL VALVE |
| BVC | BEGIN VERTICAL CURVE |
| BW | BACK OF WALK |
| CIP | CAST IRON PIPE |
| CJ | CRACK CONTROL JOINT |
| CL | CLASS |
| CL OR C/L | CENTERLINE |
| CMP | CORRUGATED METAL PIPE |
| CLR | CLEAR |
| CMU | CONCRETE MASONRY UNIT |
| CO | CLEANOUT |
| CTV | CABLE TELEVISION |
| DIP | DUCTILE IRON PIPE |
| D | DRAIN |
| E | ELECTRICAL |
| DI | DROP INLET |
| EC | END CURVE |
| ECR | END CURB RETURN |
| EG | EXISTING GRADE |
| EJ | EXPANSION JOINT |
| EL | ELEVATION |
| EP | EDGE OF PAVEMENT |
| EVC | END VERTICAL CURVE |
| EW | EACH WAY |
| EX | EXISTING |
| FD | FLOOR DRAIN |
| FG | FINISH FLOOR |
| FG | FINISH GRADE |
| FH | FIRE HYDRANT |
| FL OR FL | FLOWLINE |
| FLG | FLANGE |
| FS | FINISH SURFACE |
| G | GAS |
| GB | GRADE BREAK |
| GM | GAS METER |
| GSP | GALVANIZED STEEL PIPE |
| GSV | GAS VALVE |
| GV | GATE VALVE |
| HB | HOSE BIB |
| HP | HIGH POINT |
| INV | INVERT |
| L | CURVE LENGTH |
| LF | LINEAL FEET |
| MH | MANHOLE |
| MJ | MECHANICAL JOINT |
| NIC | NOT INCLUDED IN CONTRACT |
| OC | ON CENTER |
| OCEW | ON CENTER EACH WAY |
| PCC | POINT OF COMPOUND CURVATURE |
| PI | POINT OF INTERSECTION (OF CURVE TANGENTS) |
| PL OR P/L | PROPERTY LINE |
| PRC | POINT OF REVERSE CURVATURE |
| PVC | POLY-VINYL CHLORIDE |
| PV | PLUG VALVE |
| R | RADIUS |
| RCP | REINFORCED CONCRETE PIPE |
| RD | ROOF DRAIN |
| RG | RETAINING GLAND |
| RSJ | ROUGH SURFACE JOINT |
| R/W | RIGHT-OF-WAY |
| S | SEWER |
| SD | STORM DRAIN |
| SL | STREET LIGHT |
| ST STL | STAINLESS STEEL |
| STA | STATION |
| STD DTL | STANDARD DETAIL |
| T | TELEPHONE |
| T BLK | THRUST BLOCK |
| TB | TOP OF BERM |
| TC | TOP OF CURB |
| TCN | TOP OF CONCRETE |
| TD | TOP OF DIKE |
| TF | TOP OF FOOTING |
| TG | TOP OF GRATE |
| TI | TRAFFIC INDEX |
| TL | TRAFFIC LIGHT |
| TP | TOP OF PAVEMENT |
| TYP | TYPICAL |
| TW | TOP OF WALL |
| VCP | VITRIFIED CLAY PIPE |
| VPI | VERTICAL POINT OF INTERSECTION (OF VERTICAL CURVE TANGENTS) |
| W | WATER |
| W/ | WITH |
| WD | WALL DRAIN |
| WM | WATER METER |
| WV | WATER VALVE |
| Δ | DELTA (CURVE CENTRAL ANGLE) |
| ± | APPROXIMATELY |
| % | PERCENT |
| < | LESS THAN |
| > | GREATER THAN |

LEGEND:

| DESCRIPTION | EXISTING | PROPOSED |
|-----------------------|------------------|----------|
| CENTERLINE | | |
| EDGE OF A.C. PAVEMENT | | |
| ELEVATION | 100.00 OR 100.00 | 100.00 |
| CONCRETE PAVEMENT | | |
| A.C. PAVEMENT | | |
| PROPERTY LINE | | |
| RIGHT-OF-WAY LINE | | |
| EASEMENT LINE | | |
| CONTOURS (MAJOR) | 10 | 10 |
| CONTOURS (MINOR) | 12 | 12 |
| BENCH MARK | | |
| TREE CANOPY | | |
| APPROX. SAW CUT LINE | | |
| LIMIT OF GRADING LINE | | |
| GRADE BREAK LINE | | |
| FLOW LINE | | |
| SLOPE LINE | | |
| FENCE | | |
| RETAINING WALL | | |
| WATER | W | W |
| SEWER | S | S |
| STORM DRAIN | SD | SD |
| POWER | E | E |
| GAS | G | G |
| TELEPHONE | T | T |
| CABLE TV | CTV | CTV |
| MANHOLE | MH | MH |
| CLEANOUT | CO | CO |
| WATER METER & LATERAL | WM | WM |
| FIRE HYDRANT | | |
| THRUST BLOCK | | |
| FITTING | | |
| STREET LIGHT | | |



VICINITY MAP

NOT TO SCALE

OWNERS RESPONSIBILITIES:

- PRIOR TO COMMENCING CONSTRUCTION CALLED FOR BY THESE PLANS, SPECIFICATIONS AND DETAILS, THE OWNER SHALL ENGAGE A GEOTECHNICAL ENGINEER TO PROVIDE CONSTRUCTION PHASE OBSERVATION AND TESTING SERVICES. THE PROJECT ENGINEER OR ANOTHER QUALIFIED PARTY TO PROVIDE PROJECT CONSTRUCTION OBSERVATION AND ASSURANCES ON CONFORMANCE WITH THE APPROVED PLANS, SPECIFICATIONS AND AGENCY REQUIREMENTS. THE OWNER SHALL ALSO ASSURE THAT CONTRACTOR(S) ENGAGED TO PROPERLY IMPLEMENT THE CONSTRUCTION CALLED FOR ON THESE PLANS, SPECIFICATIONS AND DETAILS INCLUDING THOSE TASKS CALLED FOR ON THE PROJECT STORM WATER POLLUTION PREVENTION PLAN DOCUMENT OR EROSION CONTROL PLAN SHEETS ATTACHED AS PART OF THESE PLANS.
- GEOTECHNICAL ENGINEER'S RESPONSIBILITIES:
 - A GEOTECHNICAL ENGINEER SHALL REVIEW THESE PLANS WITH RESPECT TO GENERAL CONFORMANCE WITH THE INTENT OF THE RECOMMENDATIONS PRESENTED IN THE PROJECT SOILS ENGINEERING REPORT. THE PLAN REVIEW SHALL BE PERFORMED SPECIFICALLY WITH RESPECT TO GEOTECHNICAL FACTORS DISCUSSED IN THE REFERENCED REPORT. IN PERFORMING THE REVIEW, A GEOTECHNICAL ENGINEER SHALL ATTEMPT TO VERIFY THAT THE CONCEPTS AND RECOMMENDATIONS PRESENTED IN THE REPORT ARE GENERALLY INCORPORATED INTO THE PLANS. IN ACCORDANCE WITH THIS LEVEL REVIEW, THE PLANS ARE TO BE FOUND IN SUBSTANTIAL CONFORMANCE WITH THE CONCEPTS AND RECOMMENDATIONS PRESENTED IN THE NOTED REPORT.
 - UPON BEING RETAINED BY THE OWNER, PRIOR TO CONSTRUCTION THE GEOTECHNICAL, ENGINEER SHALL RECOMMEND TO THE OWNER AND THE CONTRACTOR THE LEVEL OF OBSERVATION AND TESTING THAT WILL BE PROVIDED DURING CONSTRUCTION. PROVIDED THAT THE CONTRACTOR FULFILLS HIS OR HER RESPONSIBILITY FOR TIMELY REQUESTS FOR THOSE SERVICES DURING CONSTRUCTION. THE GEOTECHNICAL ENGINEER SHALL PROVIDE OBSERVATION AND TESTING AT THE PROJECT WORK AREA OF EARTHWORK OPERATIONS, INCLUDING TRENCHING AND PAVEMENT SUBGRADE PREPARATION, AS NECESSARY TO HAVE REASONABLE CERTAINTY THAT THE EARTHWORK IS PERFORMED IN GENERAL COMPLIANCE WITH THE GEOTECHNICAL ENGINEER'S RECOMMENDATIONS, AND WITH THE REQUIREMENTS OF THE COUNTY OF SANTA BARBARA.
 - UPON COMPLETION OF EARTHWORK, THE GEOTECHNICAL ENGINEER SHALL, UPON REQUEST, PROVIDE A FINAL REPORT WITH RESULTS OF THEIR OBSERVATION AND TESTING DURING EARTHWORK OPERATIONS. PROVIDED THAT THE WORK IS PERFORMED IN CONFORMANCE WITH THE GEOTECHNICAL ENGINEER'S RECOMMENDATIONS, THE REPORT WILL STATE THEIR OPINION THAT THE GRADING WAS COMPLETED IN SUBSTANTIAL COMPLIANCE WITH THE GEOTECHNICAL ENGINEER'S RECOMMENDATIONS.
- CONTRACTORS STORM WATER POLLUTION CONTROL RESPONSIBILITIES:
 - THE CONTRACTOR SHALL BE RESPONSIBLE TO CONSTRUCT AND MAINTAIN POLLUTION PREVENTION MEASURES, INCLUDING THOSE FOR EROSION AND SEDIMENT CONTROL, AS NECESSARY TO PREVENT ANY POLLUTANT AT ANY LEVEL FROM BEING CONVEYED OFF THE CONSTRUCTION SITE AND THAT THESE MEASURES MUST CONTINUE TO BE MAINTAINED UNTIL THE REQUIRED POST-CONSTRUCTION POLLUTION PREVENTION MEASURES ARE IN PLACE AND COMPLETELY FUNCTIONAL, INCLUDING PERMANENT LANDSCAPING.
 - THE SPECIFIC MEASURES WHICH MAY BE CALLED FOR ON THE PROJECT STORM WATER POLLUTION PREVENTION PLAN CANNOT ADDRESS ALL SITE DEVELOPMENT AND STORM CHARACTERISTICS WHICH WILL EVOLVE OVER THE COURSE OF CONSTRUCTION AND THAT IT IS THE CONTRACTORS RESPONSIBILITY TO NOT ONLY IMPLEMENT THE PLAN, BUT TO MAKE ADJUSTMENTS AND EXPANSIONS IN THE IMPLEMENTATION AS NECESSARY TO ADAPT TO THE CONTRACTOR'S CONSTRUCTION OPERATIONS AND SCHEDULE AND ADDRESS EVOLVING SITE CONDITIONS AND ACTUAL WEATHER CONDITIONS.
 - IT IS THE CONTRACTOR'S RESPONSIBILITY TO ENSURE EMPLOYEES AND SUBCONTRACTORS ARE TRAINED REGARDING THESE REQUIREMENTS AND TO MAINTAIN RECORDS OF THE INSTALLATION, MODIFICATION, INSPECTION, AND MAINTENANCE OF STORM WATER POLLUTION PREVENTION MEASURES INCLUDING, BUT NOT LIMITED TO: TRAINING, INSPECTION, MAINTENANCE LOG; RECORD DRAWINGS SHOWING LOCATIONS, LIMITS, AND DATES OF INSTALLATION FOR VARIOUS MEASURES; DATED PHOTOGRAPHERS AND FIELD SKETCHES.
 - THE CONTRACTOR SHALL BE FAMILIAR WITH AND AGREE TO IMPLEMENT THE MEASURES AND INSTALLATIONS DEPICTED ON THE PROJECT STORM WATER POLLUTION PREVENTION PLAN INCLUDING INSTALLATION, ROUTINE INSPECTION AND MAINTENANCE, ADJUSTMENTS AND EXPANSION DUE TO EVOLVING SITE CONDITIONS, EMERGENCY MAINTENANCE AND ADJUSTMENTS DUE TO ACTUAL STORM AND SITE CONDITIONS, AND DOCUMENTATION.

USE OF PLANS

THIS DRAWING IS PROVIDED IN AN ELECTRONIC FORMAT (ON COMPUTER DISK) AS A COURTESY IF REQUESTED BY THE USER. THE DELIVERY OF THE ELECTRONIC FILE DOES NOT CONSTITUTE THE DELIVERY OF OUR PROFESSIONAL WORK PRODUCT. THE SIGNED HARD COPY PREPARED FOR THE PROJECT CONSTITUTES OUR PROFESSIONAL WORK PRODUCT AND THE HARD COPY MUST BE REFERRED TO FOR THE CORRECT DESIGN INFORMATION. THESE PLANS HAVE BEEN PREPARED SOLELY FOR USE FOR THE PROJECT SCOPE AND SITE SPECIFICALLY IDENTIFIED HEREON AT THE TIME THESE PLANS ARE SIGNED. THE ENGINEER PREPARING THESE PLANS WILL NOT BE RESPONSIBLE FOR, OR LIABLE FOR, USE OF ANY PART OF THESE PLANS, INCLUDING ANY NOTE OR DETAIL, FOR ANY UNAPPROVED OR REVISED PROJECT SCOPE, OR FOR ANY OTHER PROJECT AT THIS OR ANY OTHER SITE. USER AGREES TO INDEMNIFY AND HOLD HARMLESS F&A FOR ALL COSTS AND DAMAGES IF USED.

USE OF ELECTRONIC INFORMATION

ELECTRONIC INFORMATION MAY BE PROVIDED BY THE ENGINEER FOR CONVENIENCE. UNDER NO CIRCUMSTANCES SHALL DELIVERY OF ELECTRONIC FILES FOR USE BY OTHERS BE DEEMED A SALE BY THE ENGINEER AND THE ENGINEER MAKES NO WARRANTIES, EITHER EXPRESS OR IMPLIED, OF MERCHANTABILITY AND FITNESS FOR ANY PARTICULAR PURPOSE. IN NO EVENT SHALL THE ENGINEER BE LIABLE FOR INDIRECT OR CONSEQUENTIAL DAMAGES AS A RESULT OF THE USE OR REUSE OF THE ELECTRONIC FILES BY OTHERS.

ELECTRONIC INFORMATION IS INTENDED TO PROVIDE INFORMATION SUPPLEMENTAL AND SUBORDINATE TO THE CONSTRUCTION CONTRACT DOCUMENTS. LAYOUT AND CONSTRUCTION OF PROJECT ELEMENTS SHALL BE BASED ON DIMENSIONS AND INFORMATION INCLUDED ON THE SIGNED AND SEALED CONSTRUCTION CONTRACT DOCUMENTS WHICH SHALL CONTROL OVER ELECTRONIC INFORMATION. USER IS RESPONSIBLE FOR CONFIRMING LOCATION OF PROPOSED IMPROVEMENTS BASED ON DIMENSIONS AND INFORMATION INCLUDED ON THE CONSTRUCTION CONTRACT DOCUMENTS. INCONSISTENCIES BETWEEN THE ELECTRONIC INFORMATION AND THE CONSTRUCTION CONTRACT DOCUMENTS SHALL BE BROUGHT TO THE ATTENTION OF THE ENGINEER FOR RESOLUTION PRIOR TO CONSTRUCTION.

PROJECT ELEMENTS SUCH AS MANHOLES, CATCH BASINS, UTILITY VAULTS, VALVE ASSEMBLIES, STAIRS, RAMPS, WALLS, ETC. ARE SHOWN SCHEMATICALLY IN THE ELECTRONIC INFORMATION AND CONSTRUCTION OF THESE ELEMENTS SHALL BE IN ACCORDANCE WITH THE CONSTRUCTION NOTES AND DETAILS PRESENTED OR REFERENCED IN THE SIGNED AND SEALED CONSTRUCTION CONTRACT DOCUMENTS. IMPROVEMENTS CONSTRUCTED BASED ON ELECTRONIC INFORMATION AND IN CONFLICT WITH THE DRAWING DIMENSIONS DETAILS, AND THE CONSTRUCTION CONTRACT DOCUMENTS SHALL BE REMOVED AND CONSTRUCTED IN THE PROPER LOCATION AND DIMENSIONS AT CONTRACTOR'S SOLE EXPENSE.

DIGITAL DRAWINGS ARE TYPICALLY A COMPILATION OF DRAWINGS FROM A NUMBER OF SOURCES AND, AS SUCH, THERE IS INFORMATION IN THE ELECTRONIC FILE ISSUED BY THE ENGINEER THAT WAS NOT DEVELOPED BY THE ENGINEER AND IS NOT AUTHORIZED BY THE ENGINEER FOR USE BY OTHERS. ELECTRONIC INFORMATION PROVIDED BY THE ENGINEER SHALL ONLY BE APPLICABLE FOR IMPROVEMENTS DESIGNED BY THE ENGINEER AND WHICH ARE SPECIFICALLY DESIGNATED BY CONSTRUCTION NOTES AND/OR DETAILS ON THE SIGNED AND SEALED CONTRACT DOCUMENTS.

IF DIGITAL FILES ARE OBTAINED WITH THE INTENT TO USE THEM FOR PROJECT STAKING, THEY SHALL ONLY BE USED BY A QUALIFIED ENGINEER OR LAND SURVEYOR REGISTERED IN THE STATE OF CALIFORNIA. DIGITAL INFORMATION SHALL ONLY BE USED FOR STAKING HORIZONTAL LOCATION OF PROPOSED IMPROVEMENTS AFTER IT HAS BEEN CONFIRMED WITH THE SIGNED AND SEALED CONSTRUCTION CONTRACT DOCUMENTS.

THE DIGITAL DRAWINGS ARE NOT INTENDED TO BE USED DIRECTLY FOR CONTROL OF CONTRACTOR'S GRADING OPERATIONS WITHOUT STAKING BY ENGINEER OR LAND SURVEYOR. THE INTERSECTION OF PROPOSED CUT AND FILL SLOPES WITH EXISTING GRADE IS APPROXIMATE WHERE SHOWN ON THE DRAWINGS AND SHALL BE CONFIRMED BY FIELD STAKING. IT IS THE CONTRACTOR'S RESPONSIBILITY TO CONSTRUCT SLOPES IN CONFORMANCE WITH THE SPECIFIED AND DETAILED REQUIREMENTS CONTAINED IN THE CONTRACT DOCUMENTS.

BENCHMARK:

VERTICAL DATUM NAVD88 DEFINED LOCALLY BY BENCHMARK "43 LA" (NGS PID EW3774), A STANDARD USGS BENCHMARK CAP STAMPED "F 28 43 LA" ON A 3 1/2" IRON PIPE AT THE INTERSECTION OF KELLOGG AVE AND THE UPRR TRACKS.

ELEVATION = 48.36'

CAUTION! CONFIRM BENCHMARK DATA AND CONDITION WITH PROJECT SURVEYOR (STANTEC) PRIOR TO USE.

TOPOGRAPHY:

EXISTING TOPOGRAPHY COMPILED FROM AERIAL PHOTOGRAPHY DATED JULY 8, 2003 AND SUPPLEMENTED WITH FIELD SURVEY BY PENFIELD & SMITH DATED FEB. 2007.

SURVEY MONUMENT PROTECTION:

PROTECT AND PRESERVE, IN PLACE, ALL SURVEY MONUMENTS AND BENCHMARKS. DO NOT DISTURB, MOVE, OR RELOCATE MONUMENTS OR BENCHMARKS WITHOUT THE PRIOR REVIEW AND APPROVAL BY THE AGENCY HAVING JURISDICTION OVER THE MONUMENT OR BENCHMARK. THE CONTRACTOR SHALL CONTRACT WITH A LICENSED SURVEYOR FOR MONUMENTS REQUIRING DISTURBANCE OR REMOVAL, AND THE SURVEYOR SHALL RESET THE MONUMENTS OR PROVIDE PERMANENT WITNESS MONUMENTS AND FILE THE REQUIRED DOCUMENTATION WITH THE COUNTY SURVEYOR PURSUANT TO BUSINESS AND PROFESSIONAL CODE SECTION 8771.

| SHEET INDEX | |
|-------------|--|
| SHEET NO. | GENERAL DESCRIPTION |
| 1 | G-1 TITLE SHEET |
| 2 | G-2 GENERAL NOTES |
| 3 | C-1 STREET IMPROVEMENT PLAN - HOLLISTER AVE. |
| 4 | C-2 STREET IMPROVEMENT PLAN - PATTERSON AVE. |
| 5 | CD-1 DETAILS |
| 6 | LI-1 IRRIGATION PLAN |
| 7 | LI-2 IRRIGATION DETAILS |
| 8 | LP-1 PLANTING PLAN |
| 9 | LP-2 PLANTING DETAILS |
| 10 | LP-3 PLANTING ELEVATIONS |
| 11 | E1.0 ELECTRICAL SYMBOLS SPECS |
| 12 | E1.1 ELECTRICAL SITE PLAN |
| 13 | E1.2 ELECTRICAL SITE PHOTOMETRIC PLAN |

RECEIVED
NOV. 18, 2020
City of Goleta
Current Planning Division

PROFESSIONAL ENGINEER
ROBERT A. SCHMITZ
No. 71335
STATE OF CALIFORNIA

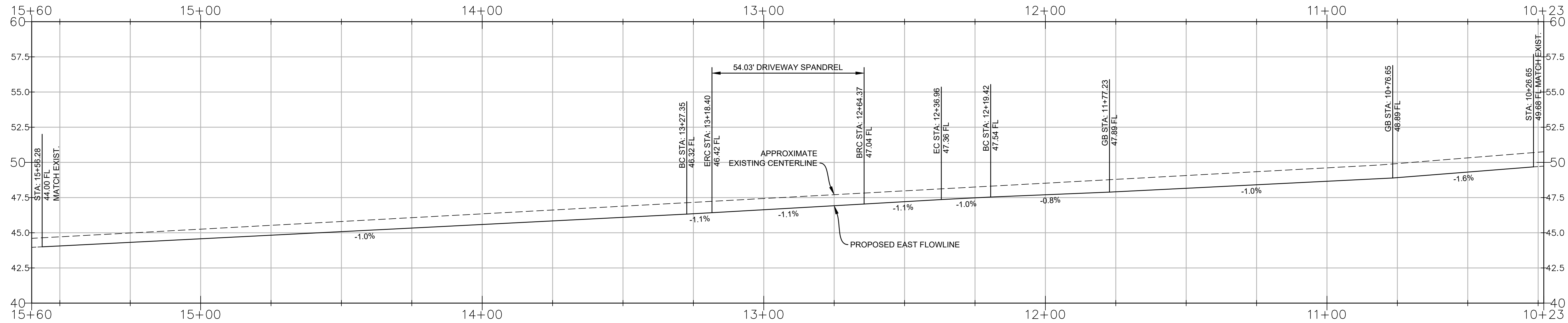
201 N. Calle Cesar Chavez, Suite 100
Santa Barbara, CA 93103
Telephone (805) 966-2224

PRELIMINARY
CONSTRUCTION ENGINEERING

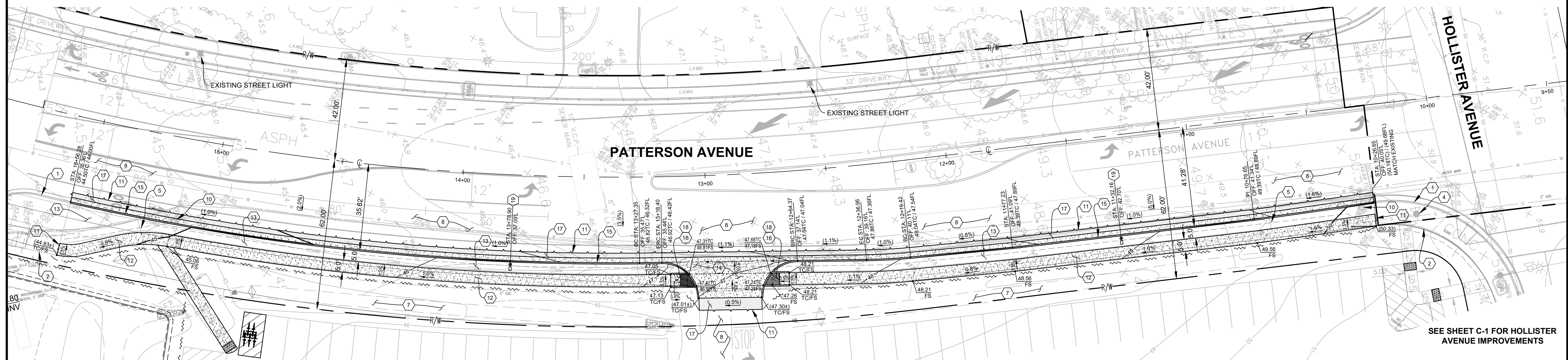
TITLE SHEET
HOLLIPAT PARKING AMENDMENT
STREET IMPROVEMENT PLANS
351 SOUTH PATTERSON AVE.
CITY OF GOLETA, CALIFORNIA

G-1
DATE: NOV. 2020
SHT. 1 OF 13

W.O. 1987



PATTERSON AVENUE PROFILE
SCALE: 1" = 20' HORIZ.
1" = 4' VERT.



SEE ONSITE IMPROVEMENT PLANS
FOR CONTINUATION

GENERAL CONSTRUCTION NOTES THIS SHEET:

- SEE THE ON-SITE IMPROVEMENT PLANS FOR ALL IMPROVEMENTS WITHIN PROPERTY LINE.
- PROTECT ALL EXISTING UTILITIES, PULL BOXES AND FACILITIES IN PLACE.
- SEE SHEET CD-1 FOR ALL DETAIL REFERENCES.

SPECIFIC CONSTRUCTION NOTES THIS SHEET:
(NUMBERED ITEM BELOW CORRESPONDS TO NUMBER WITHIN HEXAGON ON DRAWING.)

PROTECTIONS:

- PROTECT EXISTING CURB AND GUTTER.
- PROTECT EXISTING CONCRETE SIDEWALK.
- PROTECT EXISTING STORM DRAIN FACILITIES.
- PROTECT EXISTING STREET LIGHT POLE AND PULLBOX.
- PROTECT EXISTING SIGN AND POST.
- PROTECT EXISTING BOLLARDS.
- PROTECT EXISTING DRAINAGE SWALE.
- PROTECT EXISTING AC PAVEMENT, STRIPING AND PAVEMENT MARKINGS.
- NOT USED.
- PROTECT EXISTING FIRE HYDRANT.

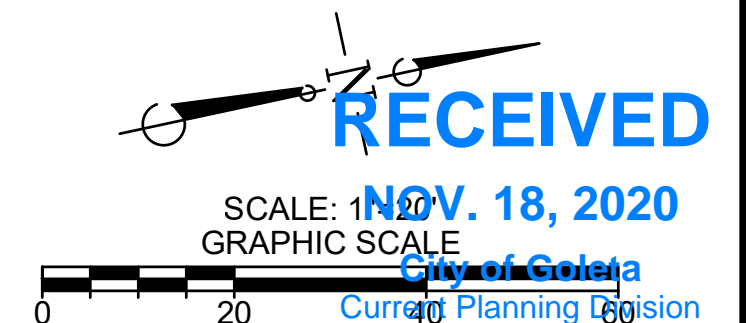
IMPROVEMENTS:

- SAWCUT AND REMOVED EXISTING PAVEMENT AS SHOWN ON PLANS. PROTECT EDGE OF SAWCUT UNTIL CONSTRUCTION OF CONFORMING IMPROVEMENTS.
- CONSTRUCT CONCRETE SIDEWALK PER COUNTY OF SANTA BARBARA STANDARD DETAILS 5-010 AND 5-040.
- PROPOSED PARKWAY AREA.
- CONSTRUCT MODIFIED DRIVEWAY SPANDREL PER COUNTY OF SANTA BARBARA STANDARD DETAIL 4-020. LAYOUT PER PLAN.
- CONSTRUCT 6" CURB AND 24" GUTTER PER COUNTY OF SANTA BARBARA STANDARD DETAIL 4-030.
- CONSTRUCT CURB RAMP TO ELEVATIONS SHOWN ON PLAN AND PER DETAIL 2 ON SHEET CD-3.
- CONSTRUCT AC PAVEMENT PER DETAIL 1 ON SHEET CD-1.
- INSTALL TRUNCATED DOMES AS SHOWN ON PLAN AND PER DETAIL 3 ON SHEET CD-1.
- INSTALL NEW STREET LIGHT AND PULL BOX PER DETAIL 4 ON SHEET CD-1. CONSTRUCT CONCRETE FOUNDATION PER SPPWC STD. PLAN 430-1, TYPE C-1-B. CITY TO MAINTAIN AFTER INSTALLATION.

IMPORTANT NOTICE

ALL EXISTING UTILITY LOCATIONS ARE APPROXIMATE. CONTRACTOR IS TO NOTIFY UNDERGROUND SERVICE ALERT TWO WORKING DAYS PRIOR TO STARTING ANY EXCAVATION OR RESURFACING.

CALL TOLL FREE 1-800-422-4133

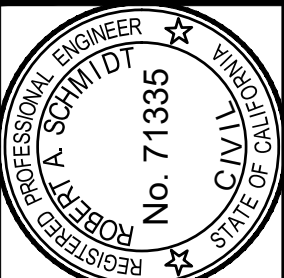


STREET IMPROVEMENT PLAN - PATTERSON AVE.
HOLLIPAT PARKING AMENDMENT
STREET IMPROVEMENT PLANS
351 SOUTH PATTERSON AVE.
CITY OF GOLETA, CALIFORNIA

C-2

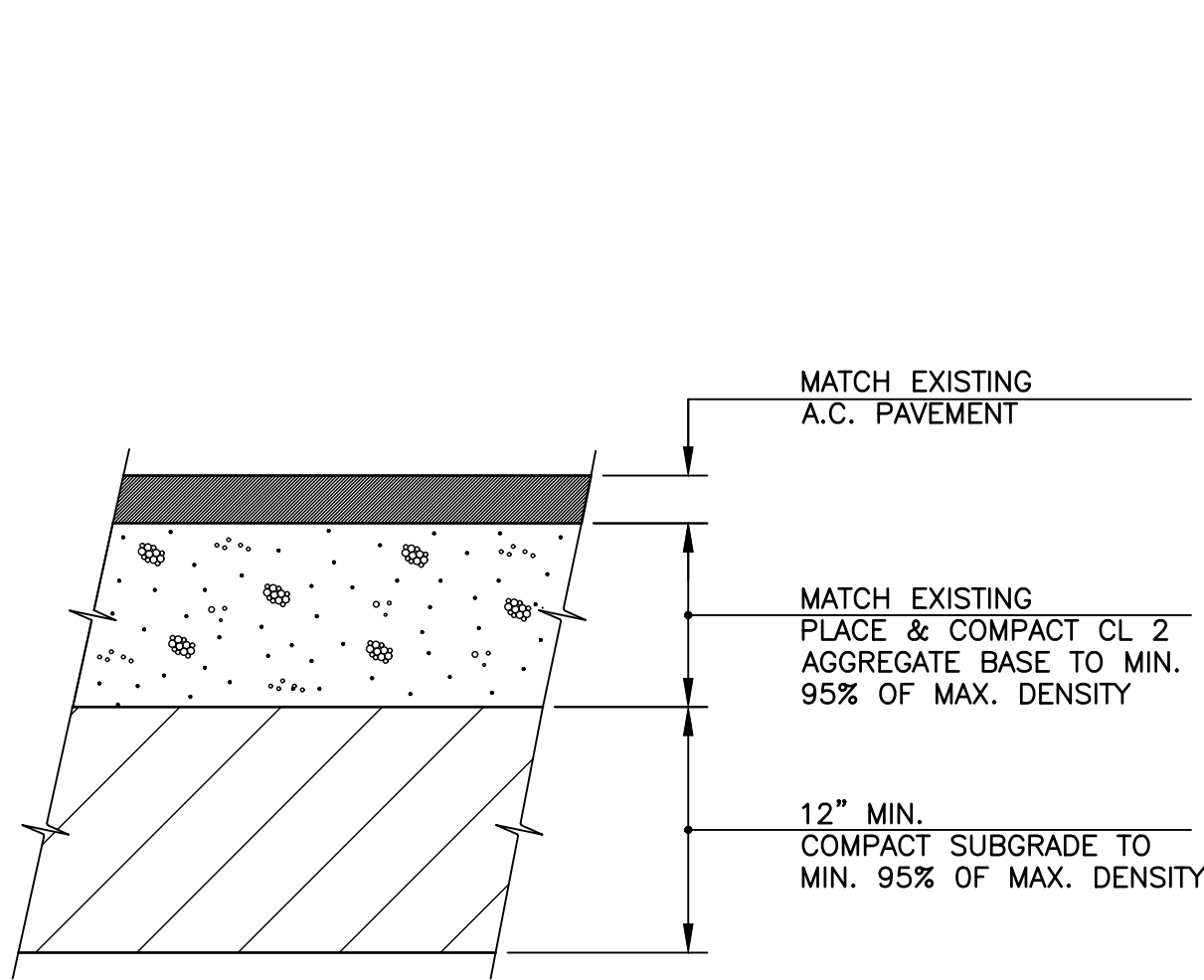
DATE: NOV. 2020
SHT. 4 OF 13

FLOWERS & ASSOCIATES, INC.
201 N. Calle Cesar Chavez, Suite 100
Santa Barbara, CA 93103
Telephone (805) 966-2224
PRELIMINARY
BY: NOT FOR CONSTRUCTION DATE: _____



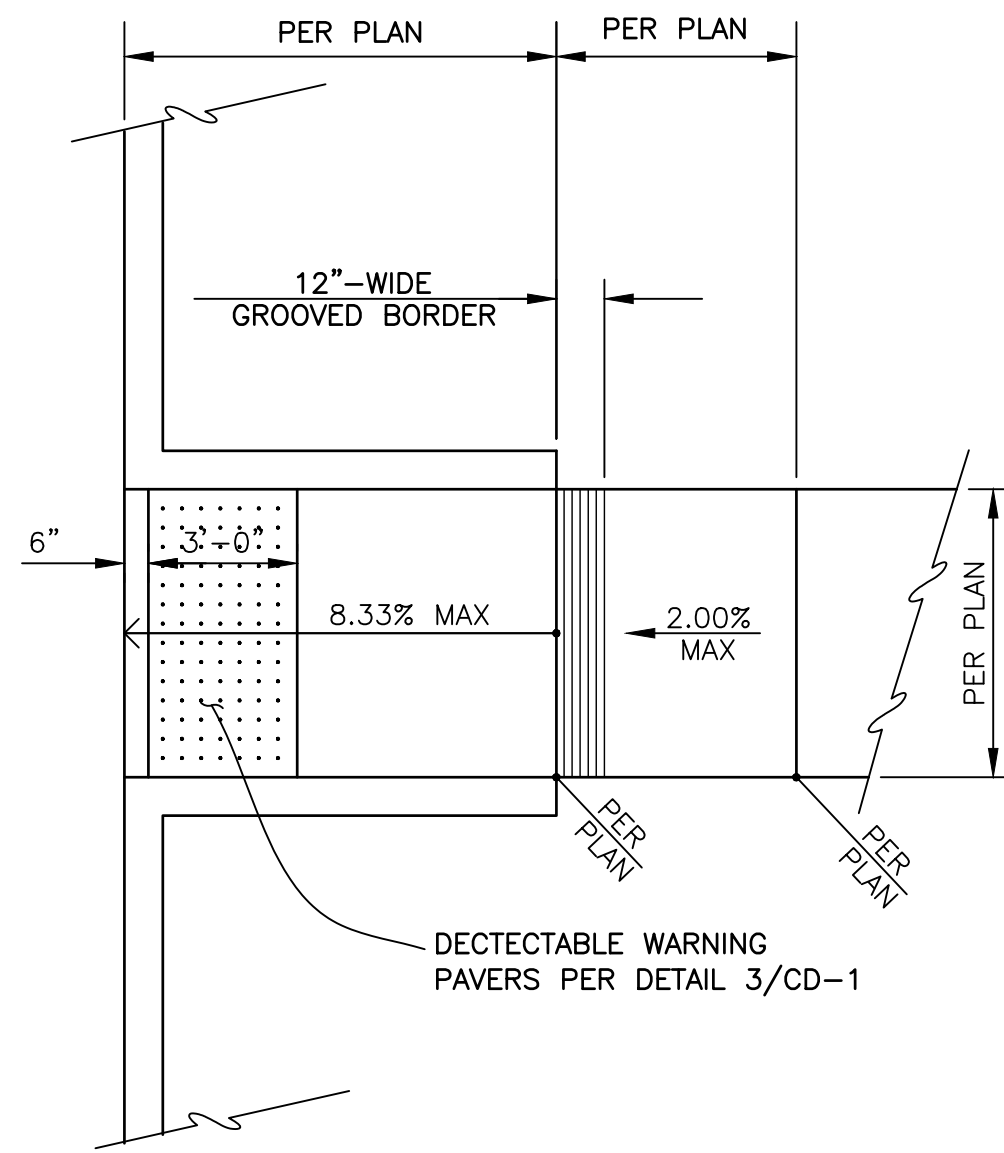
REVISIONS

| NO. | DESCRIPTION | DATE |
|-----|-------------|------|
| | | |
| | | |
| | | |



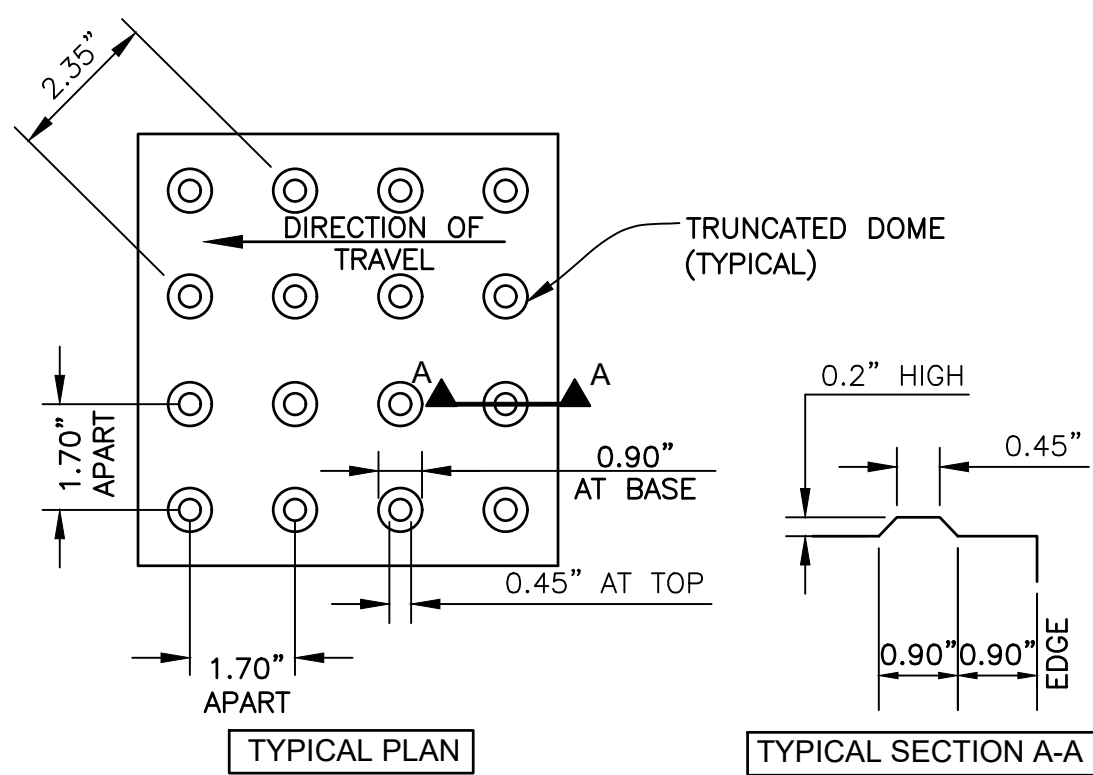
ACTUAL THICKNESS OF A.C. PAVEMENT AND AGGREGATE BASE SHALL BE DETERMINED DURING CONSTRUCTION BY THE GEOTECHNICAL ENGINEER PURSUANT TO R-VALUE TESTING OF SUBGRADE BASED ON T.I.= 4.0.

1 TYPICAL A.C. PAVEMENT STRUCTURAL SECTION
NOT TO SCALE



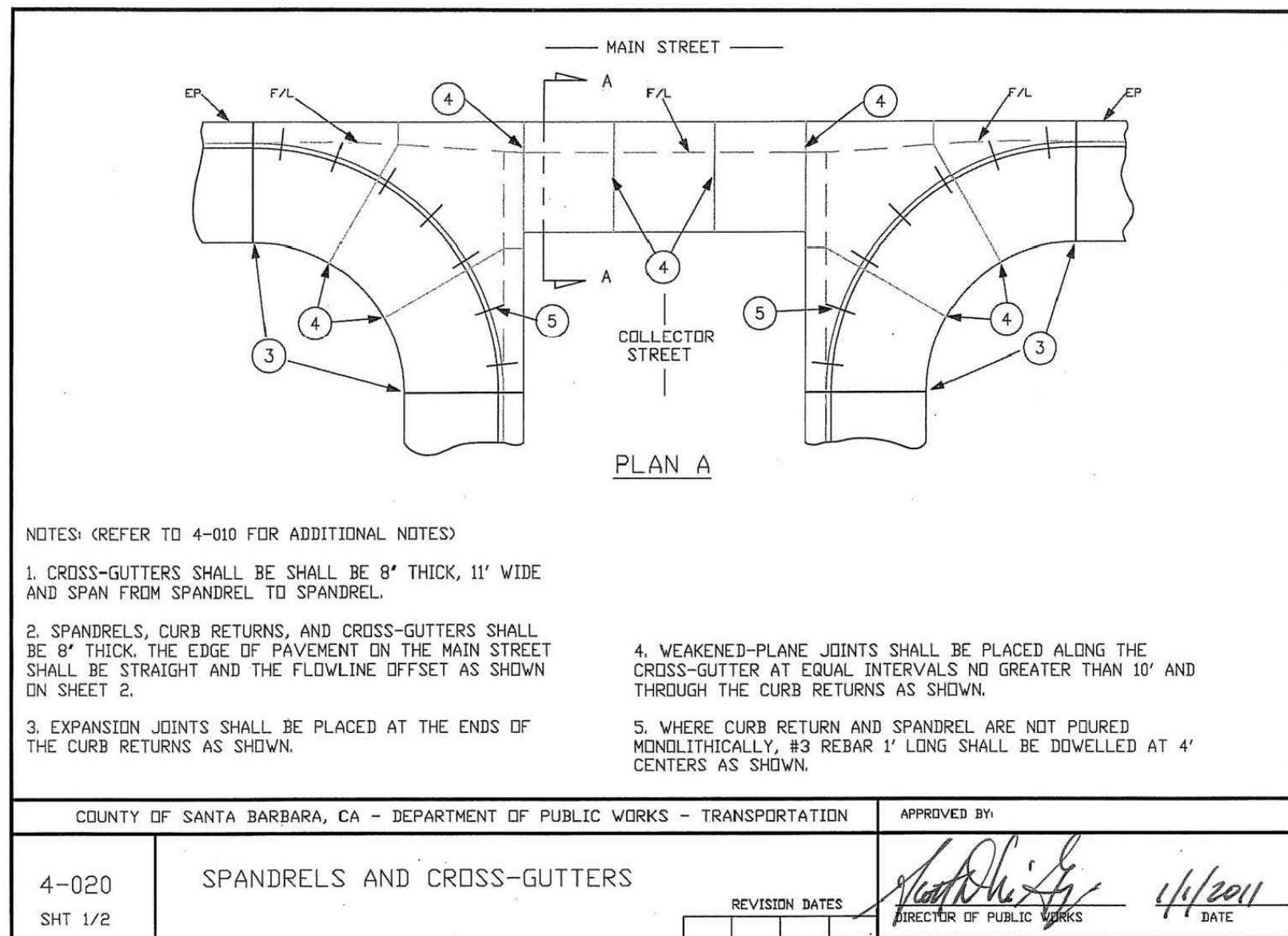
NOTE: ALL ADA FACILITIES TO BE INSTALLED IN CONFORMANCE WITH PROVISIONS PUBLISHED IN CBC 2016.

2 TYPICAL CURB RAMP DIAGRAM
NOT TO SCALE



NOTE: ALL ADA FACILITIES TO BE INSTALLED IN CONFORMANCE WITH PROVISIONS PUBLISHED IN CBC 2016.

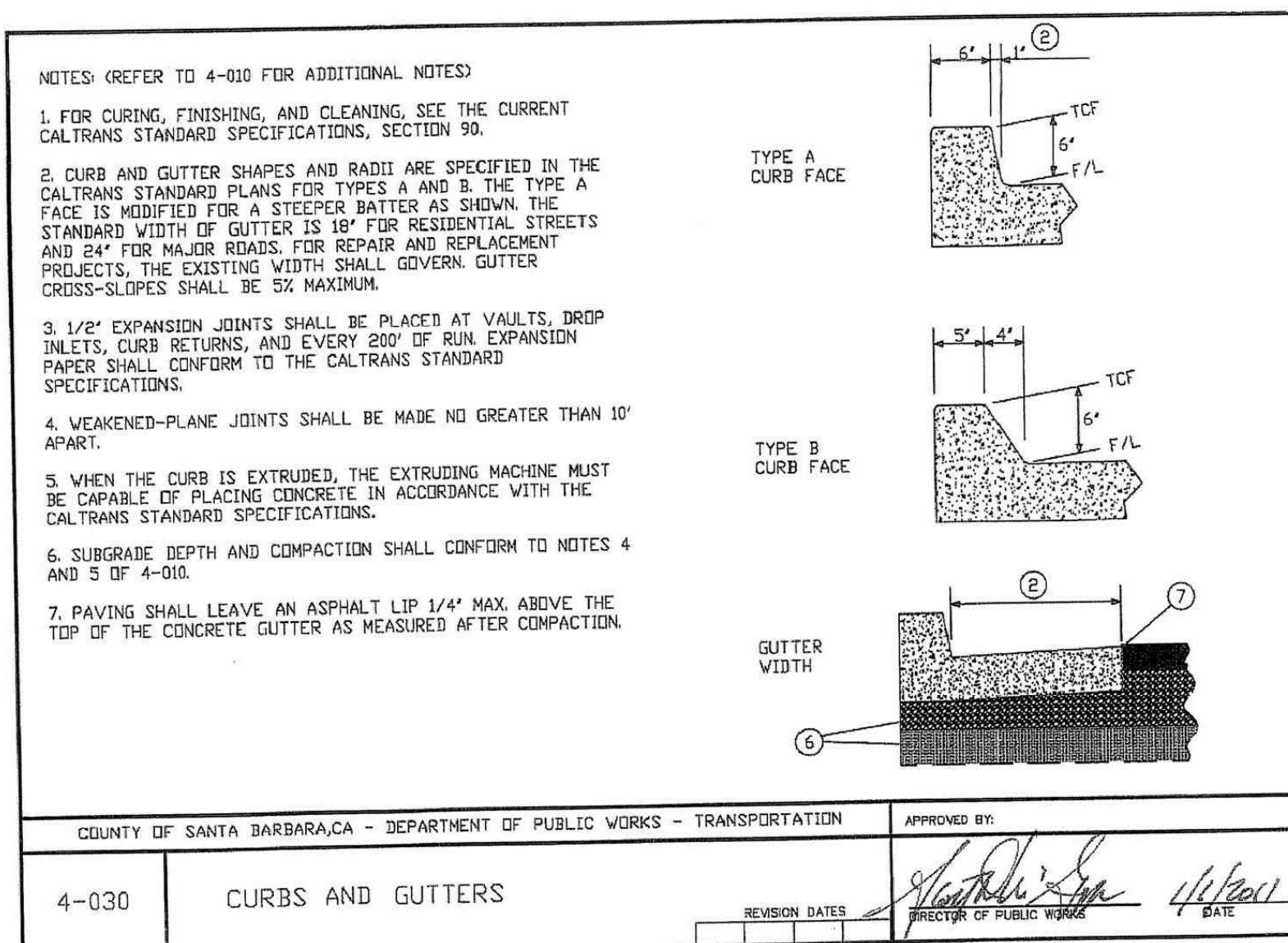
3 TRUNCATED DOME DETAIL
NOT TO SCALE



COUNTY OF SANTA BARBARA, CA - DEPARTMENT OF PUBLIC WORKS - TRANSPORTATION

4-020 SPANDRELS AND CROSS-GUTTERS

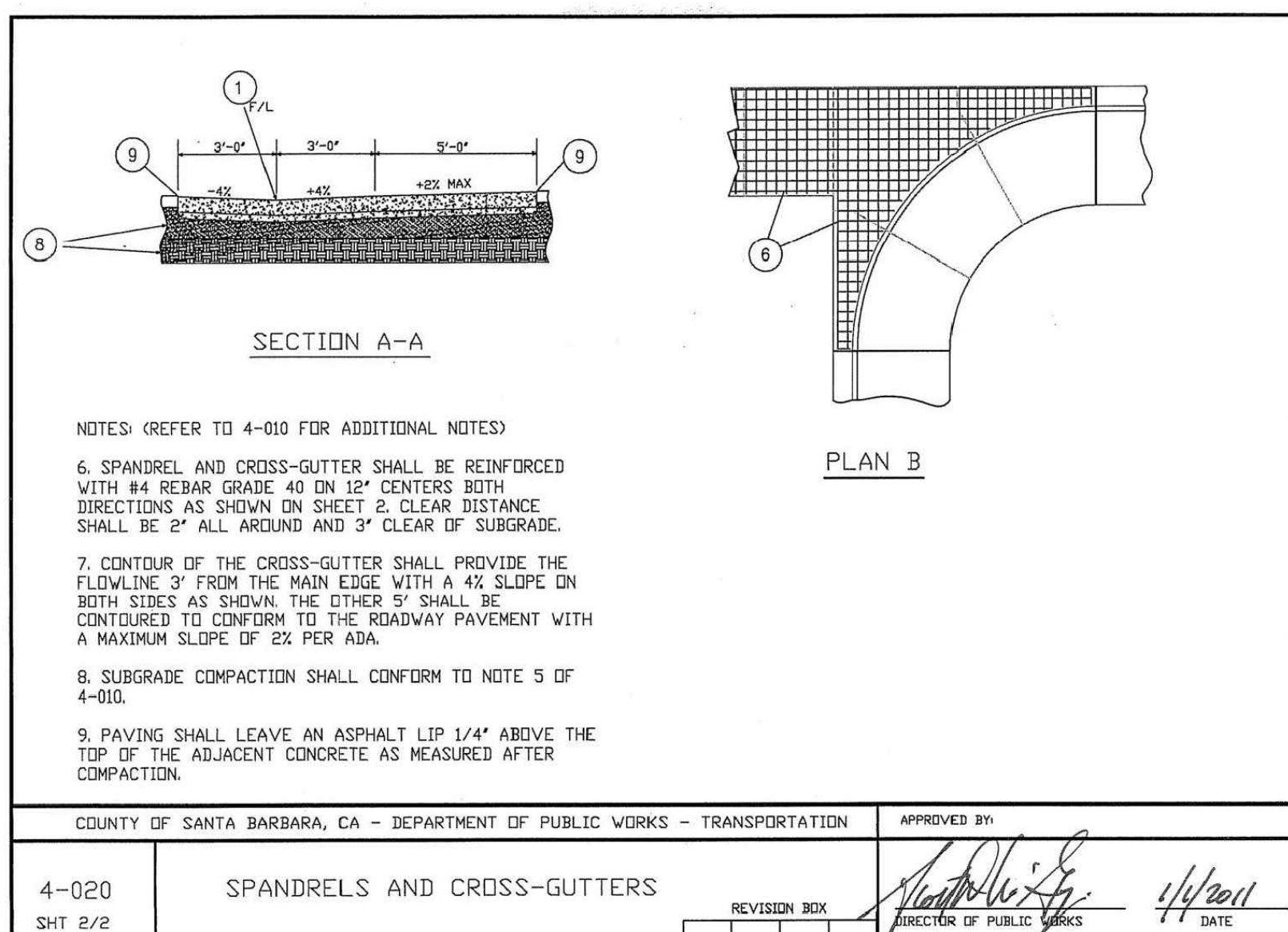
SHT 1/2



COUNTY OF SANTA BARBARA, CA - DEPARTMENT OF PUBLIC WORKS - TRANSPORTATION

4-030 CURBS AND GUTTERS

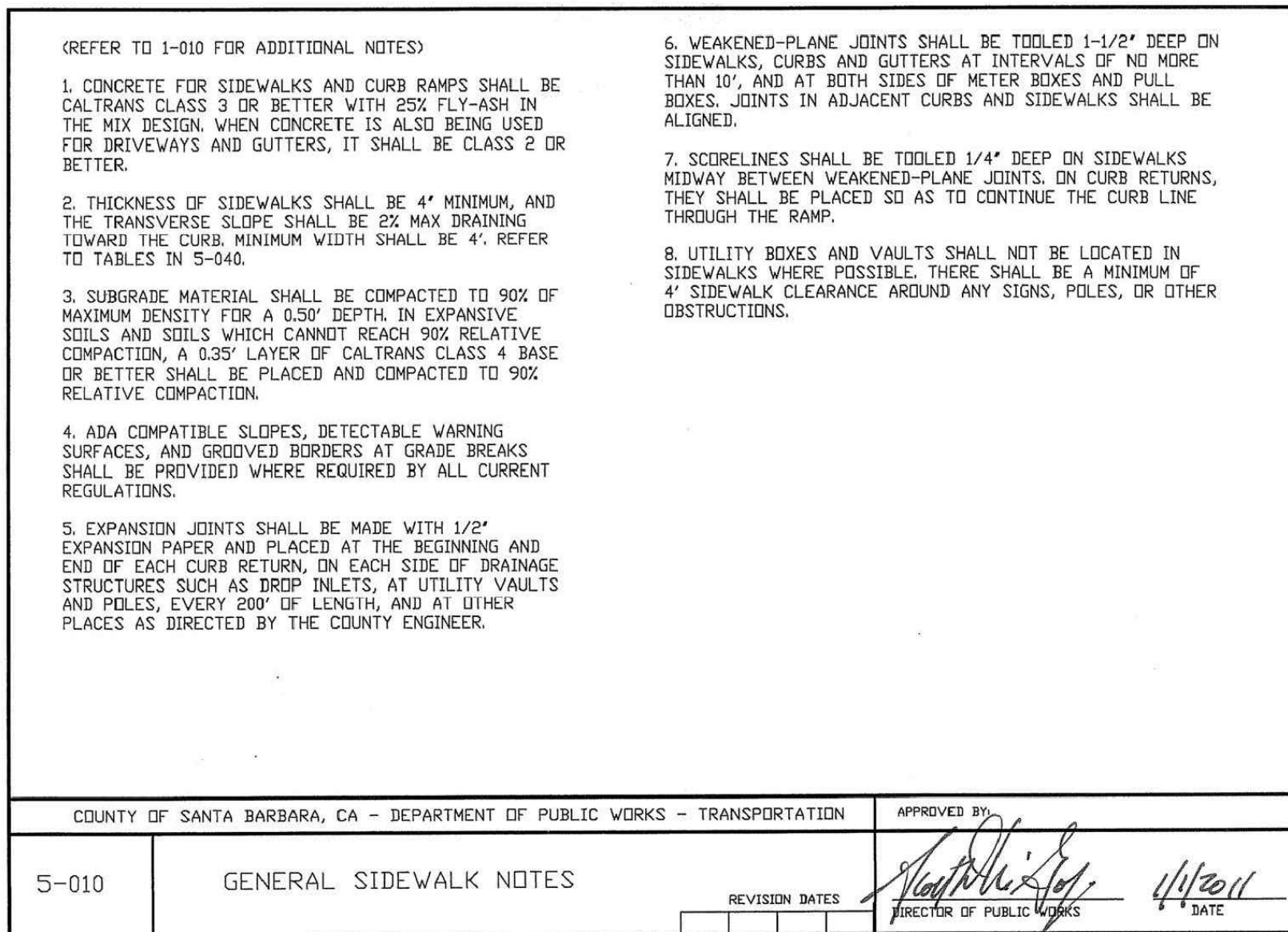
SHT 1/2



COUNTY OF SANTA BARBARA, CA - DEPARTMENT OF PUBLIC WORKS - TRANSPORTATION

4-020 SPANDRELS AND CROSS-GUTTERS

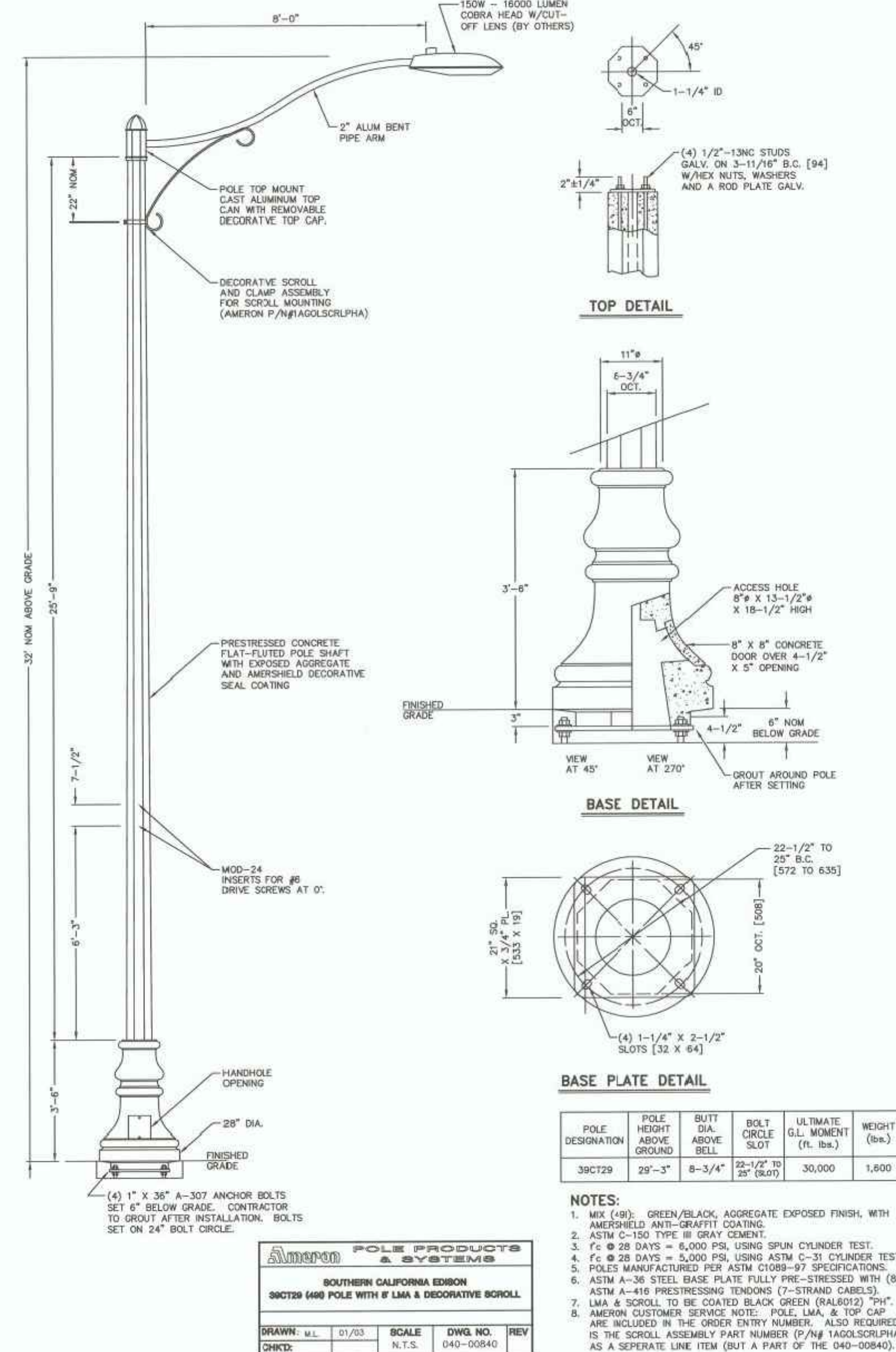
SHT 2/2



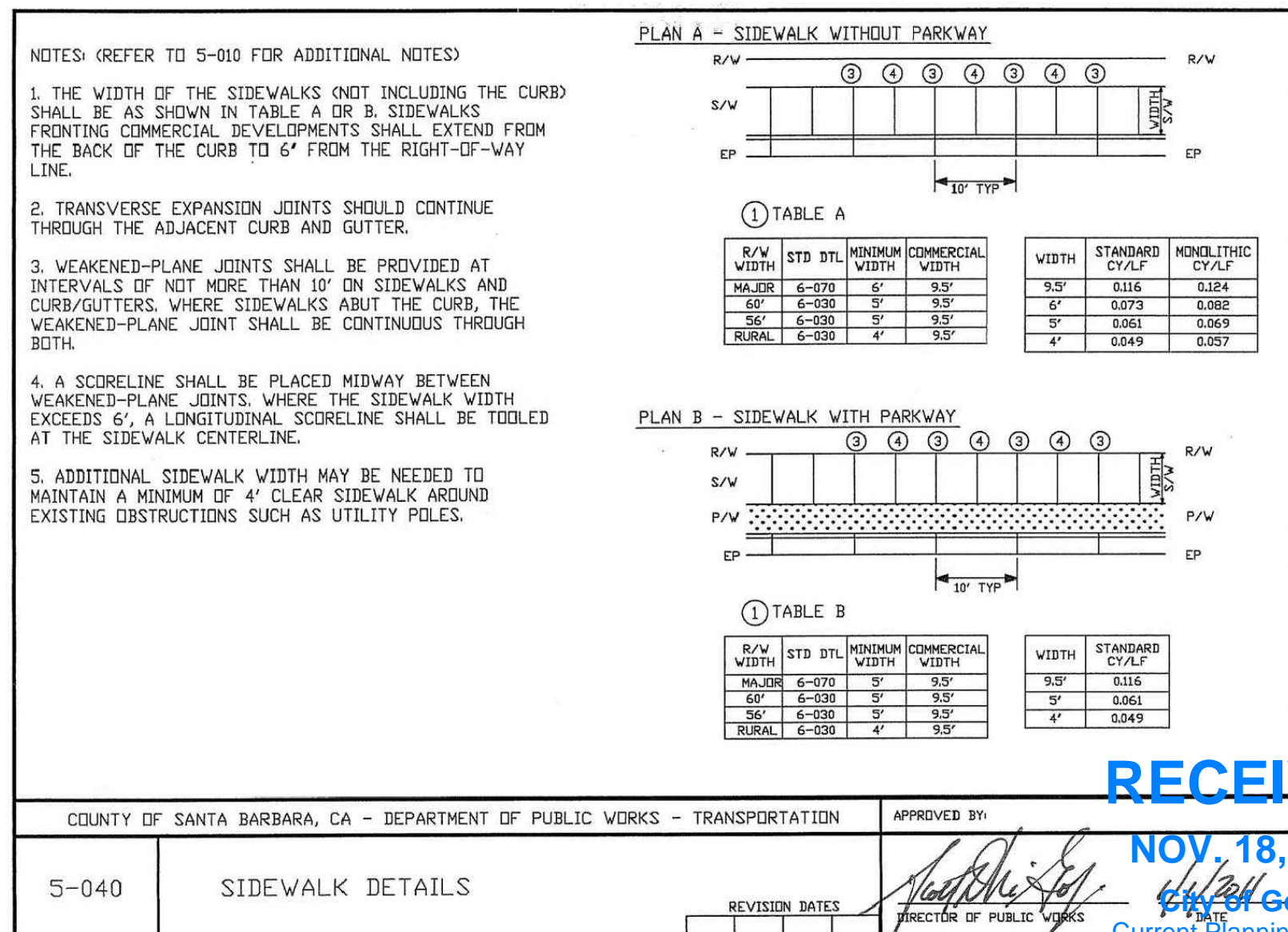
COUNTY OF SANTA BARBARA, CA - DEPARTMENT OF PUBLIC WORKS - TRANSPORTATION

5-010 GENERAL SIDEWALK NOTES

SHT 1/2



4 CITY OF GOLETA LIGHT STANDARD
NOT TO SCALE



COUNTY OF SANTA BARBARA, CA - DEPARTMENT OF PUBLIC WORKS - TRANSPORTATION

5-040 SIDEWALK DETAILS

SHT 1/2

DETAILS

HOLLIPAT PARKING AMENDMENT
STREET IMPROVEMENT PLANS
351 SOUTH PATTERSON AVE.
CITY OF GOLETA, CALIFORNIA

CD-1

DATE: NOV. 2020

SHT. 5 OF 13

FLOWERS & ASSOCIATES, INC.
201 N. Calle Cesar Chavez, Suite 100
Santa Barbara, CA 93103
Telephone (805) 966-2224

REGISTERED PROFESSIONAL ENGINEER
No. 71335
CIVIL
STATE OF CALIFORNIA

REVISIONS

| NO. | DESCRIPTION | DATE |
|-----|-------------|------|
| | | |

BY: **NOT FOR CONSTRUCTION** DATE:

PRELIMINARY

THE ENGINEER PREPARING THESE PLANS WILL NOT BE RESPONSIBLE FOR OR LIABLE FOR, USE OF ANY PART OF THESE PLANS, INCLUDING ANY NOTE OR DETAIL, FOR ANY UNAPPROVED OR REVISED PROJECT SCOPE, OR FOR ANY OTHER PROJECT AT THIS OR ANY OTHER SITE.