



TO: Parks and Recreation Commission

FROM: Jaime Valdez, Interim Director of Neighborhood Services and Public Safety

CONTACT: George Thomson, Parks and Open Space Manager

SUBJECT: Parks and Open Space Manager's Report

RECOMMENDATION:


Receive a presentation from the Parks and Open Space Manager regarding recent and upcoming maintenance work and open space capital projects.

DISCUSSION:

The following maintenance projects, open space capital projects, and related efforts will be presented:

- San Miguel Playground Retaining Wall Repairs
- Ellwood Monarch Butterfly Grove
- Lake Los Carneros Pedestrian Bridge
- Winter Storm Report 2021
- Stow Grove Maintenance (Redwoods and other Trees)

Reviewed by,



Jaime Valdez, Interim
Director of Neighborhood
Services and Public Safety

ATTACHMENT:

1. Parks and Open Space Manager Report Presentation

PRESENTATION D.2

Parks and Open Space Updates



Parks and Open Space Manager's Report

MARCH 3, 2021

PARKS & RECREATION COMMISSION

**PRESENTED BY: GEORGE THOMSON, PARKS AND OPEN SPACE MANAGER
PUBLIC WORKS DEPARTMENT**

San Miguel Playground Retaining Wall Repair



Ellwood Mesa Monarch Butterfly Grove

- What's happening with the Monarchs?
- Work Plan
 - Maintenance vs. Improvements
 - Short-term vs. Long-term
 - Permitting
 - Funding
- Public Tree Advisory Commission
- City Council
- Parks and Recreation Commission



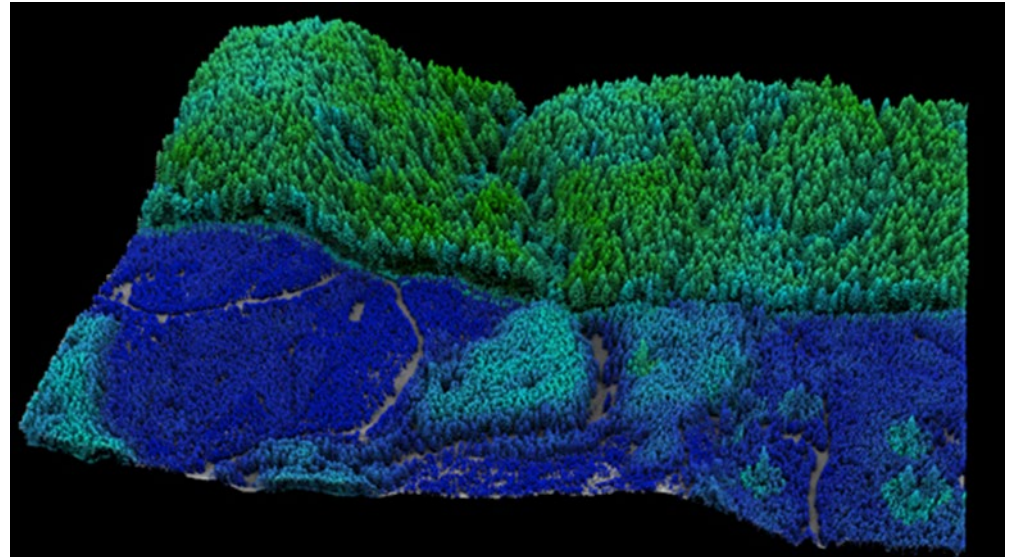
Ellwood Mesa Monarch Butterfly Grove

- Maintenance
 - Trash and Abandoned Property Removal
 - Trails and Hazardous Trees



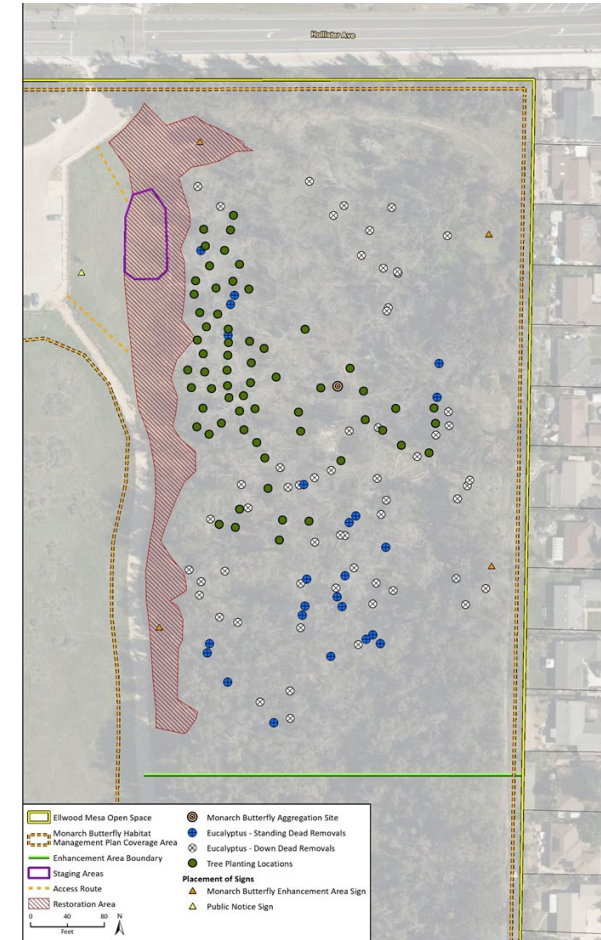
Ellwood Mesa Monarch Butterfly Grove

- Eucalyptus Forest Mapping and Modelling
 - Map, detect live/dead, model & predict
 - Light Detection and Ranging (LiDAR)
 - Multispectral Analysis (chlorophyll)
 - Long-term management goals
- Implementation Actions
 - Tree Removals
 - Tree Plantings
 - Irrigation & Mulch



Ellwood Mesa Monarch Butterfly Grove

- Habitat Improvement
 - Butterfly Winter Aggregation Sites
 - Native shrubs and annual wildflowers
 - Devereux Creek



Ellwood Mesa Monarch Butterfly Grove

- Community Wildfire Prevention Plan
 - Defined treatment areas
 - Mowing of annual grasses
 - Remove dead wood piles
 - Tree thinning
 - Dead tree removals



Lake Los Carneros Footbridge

- Remains closed for public safety concern
- Engineering Analysis/Structural Inspection Report
- Present report and options for City Council in April
- New temporary detour signage



Winter Storm 2021 Report

- Tree Falls
- Localized Flooding
- Spotlight on Infrastructure



Stow Grove Tree Maintenance

- Redwood Grove
- Other park trees
- Irrigation & Fencing
- Mulch

