



TO: Mayor and Councilmembers

FROM: Michelle Greene, City Manager

CONTACT: Kristy Schmidt, Assistant City Manager

SUBJECT: Santa Barbara County Supervisorial Redistricting

RECOMMENDATION:

- A. Provide guidance to staff with regard to the City's position on the Santa Barbara County supervisorial redistricting process and authorize official engagement in the County's map adoption process; and
- B. Provide guidance to staff about any other districting and redistricting processes in which the Council wishes to authorize official engagement.

BACKGROUND:

Every 10 years, local governments with established by-district elections use new data from the Census to redraw their electoral district lines to reflect how local populations have changed. State law requires cities and counties to engage communities in the redistricting process by holding public hearings and doing public outreach.

In the November 2018 Statewide General Election, Santa Barbara County voters approved Measure G that formed an 11-member independent redistricting commission to establish the electoral district boundaries in Santa Barbara County for the upcoming decade following receipt of the 2020 federal census data. More than 175 County residents applied to serve on the commission. Following a comprehensive process that included 10 public meetings, 11 seats were filled: two per existing district and one at-large members.

The Santa Barbara County Citizens' Independent Redistricting Commission (Commission) began meeting in January 2021 to review, discuss and deliberate on redistricting statutes, public outreach plans, and mapping tools for constituents. The primary goal when developing election districts is to draw lines that respect neighborhoods, history, and geographical elements. The goal was to have the redistricting process completed by December 2021.

The County Commission is asking for the public's help to plan, draw, and redivide the districts. Each supervisorial district will need to encompass approximately 89,300 residents. The finalized map will define the five Santa Barbara County supervisorial district borders, and these new County supervisorial districts will impact how the public will elect the Santa Barbara County Supervisors for the next 10 years. The County's current supervisorial district map is provided in Attachment 1.

The County of Santa Barbara is not the only agency with a presence in Goleta that is currently districting or redistricting. Other agencies include: The State of California (California's Congressional, State Senate, State Assembly, and State Board of Equalization districts); Goleta Union School District (School Board members); Santa Barbara Unified School District (School Board members); Goleta Water District (Board members); Goleta Sanitary District (Board members).

DISCUSSION:

The Commission's schedule initially set October 18, 2021, as the deadline for initial draft maps to be accepted. That deadline was extended to November 8, 2021, due to the delay in final adjusted census numbers and the need to update mapping tools once those numbers were released (Note: The County's mapping tools initially used estimates, just as the City's tools did). The Commission is scheduled to move aggressively after that date to finalize the district map by the deadline of December 2021. At its November 12, 2021, meeting, the Commission will narrow the choices down to 3-5 "focus maps", and future public input will be limited to debating the value of those focus maps. Therefore, staff felt it was important to hold this special meeting to provide the opportunity for Council to provide input before those focus maps are selected.

In response to interest from several Councilmembers, staff seeks to determine whether the City Council wishes to weigh in on the County's supervisorial districting process. To facilitate this input staff recommends the City Council provide guidance to staff on the City's position and authorize official engagement in general. This direction will be interpreted as an authorization for an official or officials of the City, such as the Mayor, Mayor Pro-Tempore, City Manager, or other designee, to provide oral and/or written comment during the process consistent with City Council's policy guidance.

Specific policy guidance Council may wish to provide includes, but is not limited to:

1. Does the City of Goleta prefer to be in a single supervisorial district or divided into two supervisorial districts? The City is currently divided into two supervisorial districts, as reflected in the map in Attachment 1.
2. If Goleta is divided into two supervisorial districts, where should the dividing line be? The current dividing line can be viewed on the map in Attachment 1.
3. Whether the City of Goleta is included in one or two districts, what non-City areas should also be included in those same district(s)? (e.g., the greater Goleta Valley,

county unincorporated areas, Isla Vista, the City of Santa Barbara, the Gaviota coast, etc.)

4. Is there a particular draft map that the City should support? Maps that have been submitted to the Santa Barbara County Citizens' Independent Redistricting Commission so far can be found at:

<https://drawsantabarbaracounty.org/view-draft-maps/>

The remaining steps in the County's process are:

Date	Tentative Meeting Purpose
November 8, 2021	New Deadline to Submit Initial Draft Maps
November 12, 2021 3 p.m.	Presentation of draft maps, identify 3-5 focus maps (Round 1), direction on any map modifications
November 15, 2021 6 p.m.	Public input on focus maps (Round 1)
November 18, 2021 12 p.m.	Public input on focus maps (Round 1)
November 22, 2021 6 p.m.	Review focus and newly submitted maps Narrow to 3-4 focus maps (Round 2) Direction on map modifications.
December 01, 2021 6 p.m.	Identify preferred map. Direction on map modifications, if any.
December 08, 2021 6 p.m.	Adopt map.

Additional details related to this process are available at:

<https://drawsantabarbaracounty.org/>

Request from Santa Maria

On October 29, staff received a request from the City Manager of the City of Santa Maria, who was authorized by the Santa Maria City Council to engage in the County's redistricting process consistent with their direction. He asked that the City of Goleta request that the Santa Barbara County Redistricting Commission consider cities as "communities of interest" in the County supervisorial redistricting process. A "community of interest" is a contiguous population which shares common social and economic interests that should be included within a single district for purposes of its effective and fair representation. The Santa Maria City Council passed a resolution (Attachment 2) that included this position, and others specific to the North County area.

The request also included a map (Attachment 3) that Santa Maria staff prefer as meeting the direction of the Santa Maria City Council and stated that they believe Goleta should also support. The map is one of many posted on the County's redistricting website's DistrictR tool:

<https://drawsantabarbaracounty.org/view-draft-maps/>

As of the agenda printing date for this meeting, an official map number has not been assigned to the map by the County, but this is expected soon. Staff will amend this report as soon the map number is available.

Santa Maria believes it is the best map for Goleta and the other cities in the County because:

- It creates two minority majority districts by both population and Voting Age Population by Race which comports with the priorities of the Voting Rights Act
- It divides districts primarily by major throughfares rather than gerrymander
- It maintains communities of interest including:
 - It comports with City of Santa Maria City Council resolution (Attachment 2) as practical as possible
 - It keeps VSFB, Lompoc, Mission Hills, Vandenberg Village, and the Federal Prison in the same District
 - It keeps the entire Santa Ynez Valley together including the Lake Cachuma Watershed
 - It keeps the Cities of Goleta and Santa Barbara as whole as possible in their view.
 - It puts the two medium sized cities (Lompoc and Goleta) together for the first time. These two communities "share" some 10,000 commuters each and every day.
 - It restores Guadalupe with both Santa Maria and Orcutt Districts, and it restores Cuyama and the City of Santa Maria

In response to the City of Santa Maria's request, Goleta staff asks that the City Council answer two additional questions:

5. Should the City advocate for cities in general to be considered "communities of interest" in the County supervisorial redistricting process?
6. Should the City advocate for the adoption of Santa Maria's preferred map, included as Attachment 3?

Other Districting and Redistricting Processes

As mentioned above, several other agencies with a presence or jurisdiction in Goleta are currently districting or redistricting. Staff have not received any requests from Councilmembers or others for the City to take an official position on these redistricting processes. However, Council may wish to provide guidance to staff on these processes as well.

District	Deadline to submit draft maps	Deadline for public comments	Anticipated adoption of map	Redistricting website
Goleta Water District (1st Districting)	N/A (Expecting to post drafts maps by 11/25)	1/22/2022	Spring 2022	http://www.goletawater.com/about-the-district/transitioning-to-district-based-elections-for-2022
Goleta Sanitary (1st Districting)	Feb 2022	March 2022	April 2022	https://goletasanitary.org/new-election-process
Goleta Union School District (1st Districting)	N/A	12/15/2021	12/15/2021 (Board will vote after public comments)	https://www.gusd.us/cvra
Santa Barbara Unified School District (1st Districting)	N/A	12/14/2021	Jan-Feb 2022	https://www.sbunified.org/board/california-voting-rights-act-cvra
State of California (Redistricting)	N/A (Release draft maps by 11/15)	3 days from the date of public release of final maps (Est. 12/26/21)	12/27/2021	https://www.wedrawthelinesca.org/

Accordingly, the final question for Council would be:

7. Does Council wish to provide guidance and authorize official engagement in any of these other processes?

IMPACT TO THE COMMUNITY:

The impact to the community is that the elected leadership of the City of Goleta is providing guidance to the County's Independent Commission which should enable the Commission to have specific policy goals from the City of Goleta to consider in its map adoption process. This would also apply to engagement with other districting or redistricting processes.

ALTERNATIVES:

The City is under no obligation to comment on the County supervisorial redistricting process or other agencies' districting and redistricting processes. Alternatives would include not commenting during the process or commenting with fewer or additional topic areas to those identified by staff.

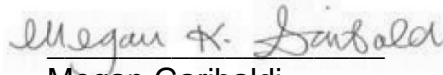
Council could also ask staff to check back in as some of these processes are further down the road, such as after the 3-5 County focus maps are selected, for further discussion and direction.

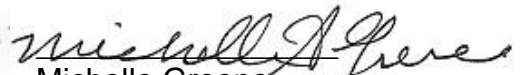
Reviewed By:

Legal Review By:

Approved By:


Kristine Schmidt
Assistant City Manager


Megan Garibaldi
City Attorney

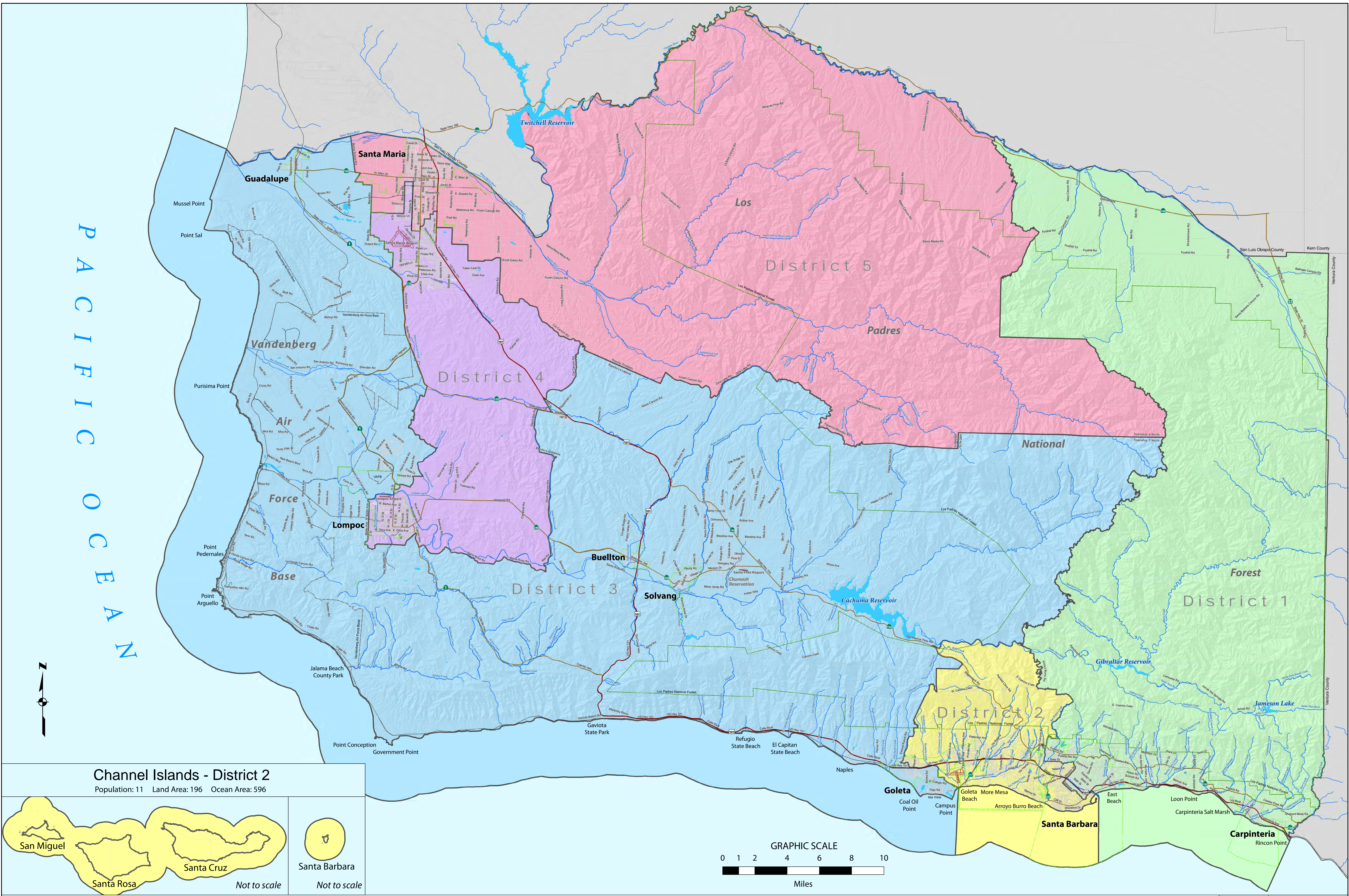

Michelle Greene
City Manager

ATTACHMENTS:

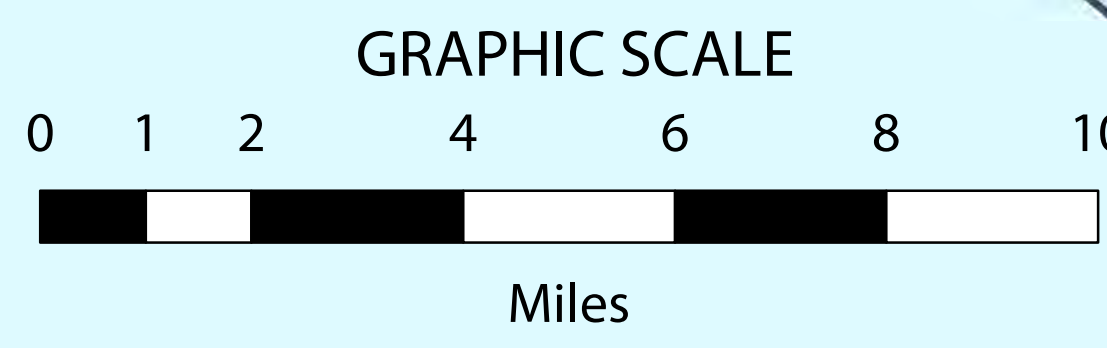
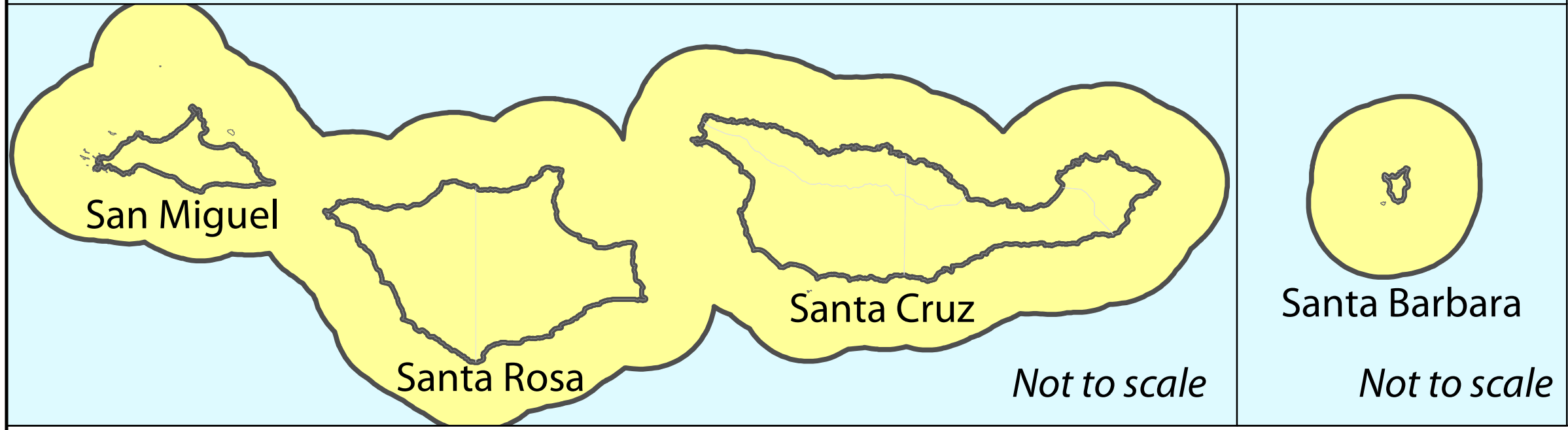
1. Map of current Santa Barbara County supervisorial districts
2. City of Santa Maria Resolution No. 2021-120
3. Draft map proposed by City of Santa Maria staff for City of Goleta support
4. County Supervisorial Redistricting Presentation 11-4-2021
5. Santa Barbara County Redistricting - Presentation 11-3-2021

ATTACHMENT 1:

Map of current Santa Barbara County supervisorial districts



Channel Islands - District 2
Population: 11 Land Area: 196 Ocean Area: 596



Supervisory Districts, Santa Barbara County

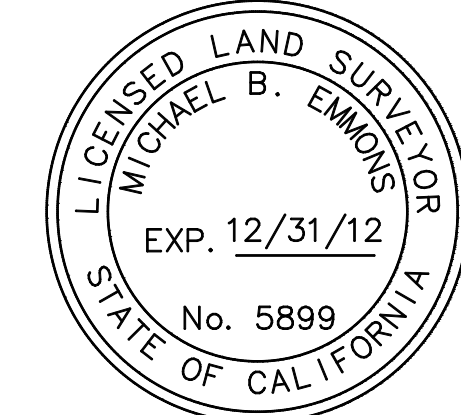
Compiled by the County Surveyor's Office
Santa Barbara County Ordinance No. 4797 effective September 8, 2011

Population Data Source: U.S. Census Data 2010.
Disclaimer: This map is a graphic representation and is for reference only. District lines as shown on this map have been modified to fit the parcelized base map created and provided by the County Assessor's Office. No level of accuracy is claimed for the district line shown hereon and lines should not be used to obtain coordinate values, distances, or bearings. Although every effort has been made to ensure the accuracy of information, errors and conditions originating from physical sources used to develop the database may be reflected in this data. Santa Barbara County shall not be liable for any errors, omissions, or damages that result from inappropriate use of this document.

District 1 Population: 84,456 Land Area: 582 Ocean Area: 44	District 2 Population: 84,447 Land Area: 73 Ocean Area: 33	District 3 Population: 84,730 Land Area: 1041 Ocean Area: 304	District 4 Population: 84,965 Land Area: 173 Ocean Area: 0	District 5 Population: 85,297 Land Area: 683 Ocean Area: 0
---	--	---	--	--

Total Population: 423,895. Total Land Area: 2,552.

Population data from US Census 2010. Land area measurements in square miles are approximate and exclude 196 square miles for the Channel Islands.



County Surveyor's Certificate

THIS MAP WAS PREPARED UNDER MY DIRECTION IN ACCORDANCE WITH CALIFORNIA GOVERNMENT CODE SECTION 27557, IN OCTOBER 2011. I CERTIFY THE DISTRICT LINES SHOWN HEREON ARE CONSISTENT WITH COUNTY ORDINANCE #4797, EFFECTIVE SEPTEMBER 8, 2011.

Michael B. Emmons
MICHAEL B. EMMONS
COUNTY SURVEYOR

10/27/2011
DATE



ATTACHMENT 2:

City of Santa Maria Resolution No. 2021-120

RESOLUTION NO. 2021-120

**A RESOLUTION OF THE CITY COUNCIL OF THE CITY OF SANTA MARIA,
CALIFORNIA, PROVIDING INPUT TO THE COUNTY OF SANTA BARBARA
REDISTRICTING COMMISSION REGARDING THE DESIGNATION OF
DISTRICT BOUNDARIES**

WHEREAS, Redistricting is the regular process of adjusting the lines of voting districts in accordance with population shifts, and

WHEREAS, The Citizen's Independent Redistricting Commission is a commission designed to designate district boundaries for the County of Santa Barbara with the purpose of letting the citizens accurately represent the population every 10 years, and

WHEREAS, Fair, representative redistricting maps help ensure that elected officials will be responsive to the voters in their communities. Redistricting ensures every person has equal representation by drawing districts with approximately equal numbers of people – one person, one vote, and

WHEREAS, The Santa Barbara County Independent Redistricting Commission is proceeding with analyzing supervisorial districts to update them based on 2020 census data, and

WHEREAS, This process provides the opportunity for citizens to provide public comment and criteria to be considered, and

WHEREAS, The City of Santa Maria represents 109,707 residents and has the opportunity to provide Santa Maria specific guidance as it seeks the best representation from County officials, and

NOW, THEREFORE, IT IS HEREBY RESOLVED by the City Council of the City of Santa Maria, California, as follows:

1. Cities within Santa Barbara County should be considered Communities of Interest and wholly contained within a single Supervisorial District.
2. The City of Santa Maria, with its population exceeding that of a single Supervisorial District, should not be divided among more than two supervisorial districts and should predominately be within a single Supervisorial District.
3. Supervisorial boundaries in the City of Santa Maria should follow major thoroughfares.
4. Communities of common interest should remain together, and the Cuyama Valley should be included within one of the Supervisorial Districts containing a portion of the City of Santa Maria.

5. Consistent with a city being a community of interest, the City of Guadalupe should be included within one of the Supervisorial Districts containing a portion of the City of Santa Maria and at least the portion of Orcutt that contains Righetti High School.
6. The City Council authorizes the Mayor, Mayor Pro-Tem, and City Manager to engage in the Commission's accelerated map adoption schedule consistent with City Council policy guidance.
7. The Chief Deputy City Clerk is hereby authorized to make minor changes herein to address clerical errors, so long as substantial conformance of the intent of this document is maintained. In doing so, the Chief Deputy City Clerk shall consult with the City Manager and City Attorney concerning any changes deemed necessary.

PASSED AND ADOPTED at a regular meeting of the City Council of the City of Santa Maria, California, held this 19th day of October 2021.

ATTEST:

/s/ ALICE M. PATINO
Mayor

/s/ RHONDA M. WHITE, CMC
Chief Deputy City Clerk

APPROVED AS TO FORM:

City Attorney

APPROVED AS TO CONTENT:

Department Director

City Manager

STATE OF CALIFORNIA)
COUNTY OF SANTA BARBARA) ss.
CITY OF SANTA MARIA)

I, **Rhonda M. White, CMC**, Chief Deputy City Clerk of the City of Santa Maria and ex officio Clerk of the City Council **DO HEREBY CERTIFY** that the foregoing is a full, true and correct copy of **Resolution No. 2021-120** which was duly and regularly introduced and adopted by said City Council at a regular meeting held **October 19, 2021**, and carried on the following vote:

AYES: Councilmembers Cordero, Escobedo, Waterfield, and Mayor Patino.

NOES: Councilmember Soto.

ABSENT: None

ABSTAIN: None.





Chief Deputy City Clerk
City of Santa Maria

10/26/2021

ATTACHMENT 3:

Draft map proposed by City of Santa Maria staff for City of Goleta support



About redistricting

About the data

Save plan

District homepage

New plan

[Print / PDF](#)

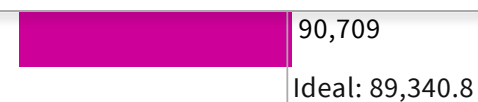
Export Districtr-JSON

Export plan as SHP

Export plan as GeoJSON

Export assignment as CSV (these units)

About import/export options



UNASSIGNED POPULATION: 5

MAX. POPULATION
DEVIATION: 1.64%

ATTACHMENT 4:

Presentation

COUNTY SUPERVISORIAL REDISTRICTING

Goleta City Council
Special Meeting
November 5, 2021



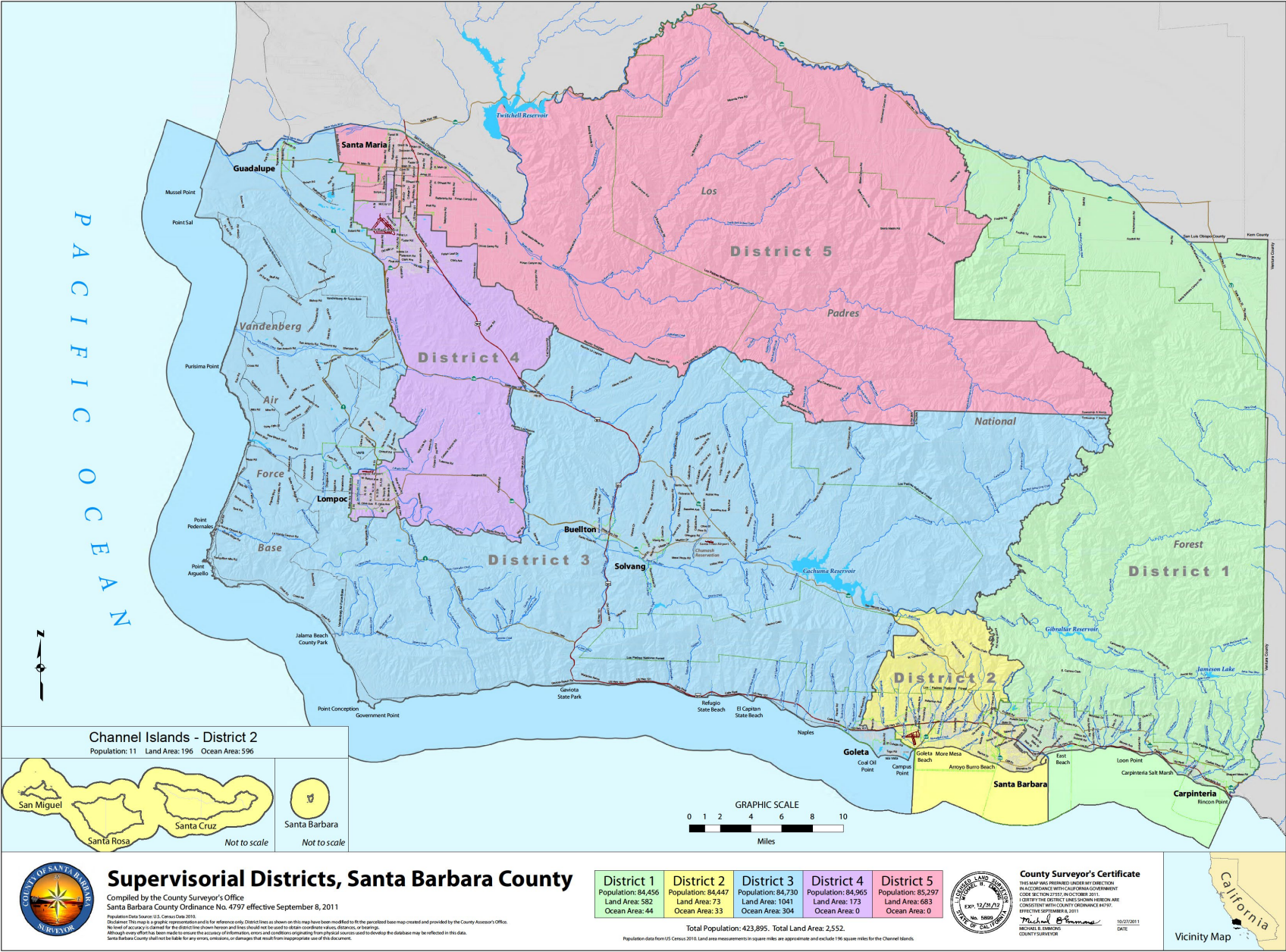
County of Santa Barbara Redistricting

- Current districts were based on 2010 census
- Agencies with existing districts must redistrict after each census
- Voters approved an independent redistricting commission
- Commission is engaged in a public outreach process

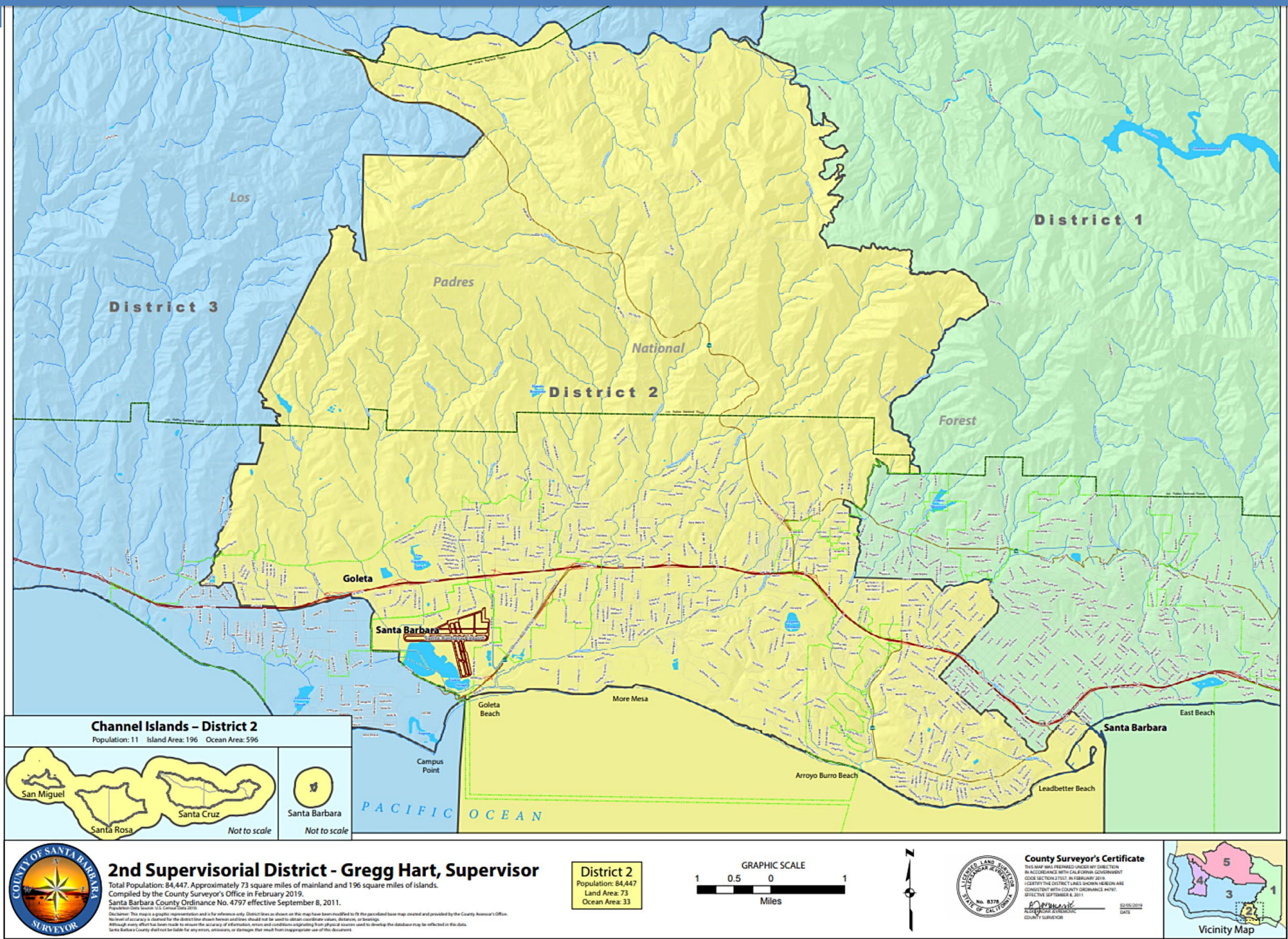
<https://drawsantabarbaracounty.org/>

- Timeline is very tight, especially with the delay in 2021 census numbers.
- Council may wish to engage in County redistricting process

CURRENT SUPERVISORIAL DISTRICT MAP



Showing Goleta Area



Areas of Potential Engagement

Authorize “official engagement” related to Goleta’s interests - official(s) to provide oral and/or written comment during the process, consistent with Council direction

- Single supervisorial district or divided into two+ districts?
- Where should the dividing line(s) be in Goleta?
- What non-City areas should also be included in those same district(s)?
- Is there a particular Draft Map you would prefer?
- Other?

From Commission's 11/3/2021 Meeting

“Given that the population of South County is too large to fit into two districts, but too small to fit into three, which area of South County gets excluded from the two districts that are wholly based there?

- Southwest Goleta Valley (Isla Vista, UCSB, and southwestern Goleta)
- West Goleta Valley (Isla Vista, UCSB, and western Goleta)
- Goleta (the whole city)
- Northwest Goleta Valley (western Goleta and that portion of Eastern Goleta Valley that is north of US 101)
- North Goleta Valley (those portions of Goleta and Eastern Goleta Valley that are north of US 101)
- Eastern & Foothill Areas (Carpinteria, Montecito, and areas that are north of CA 192).



From Commission's 11/3/2021 Meeting

“And, given that, which area(s) of Central and/or North County does that area of South County join with to form a third district?

- Santa Ynez Valley
- Lompoc
- Vandenberg
- Guadalupe
- Orcutt
- Santa Maria”

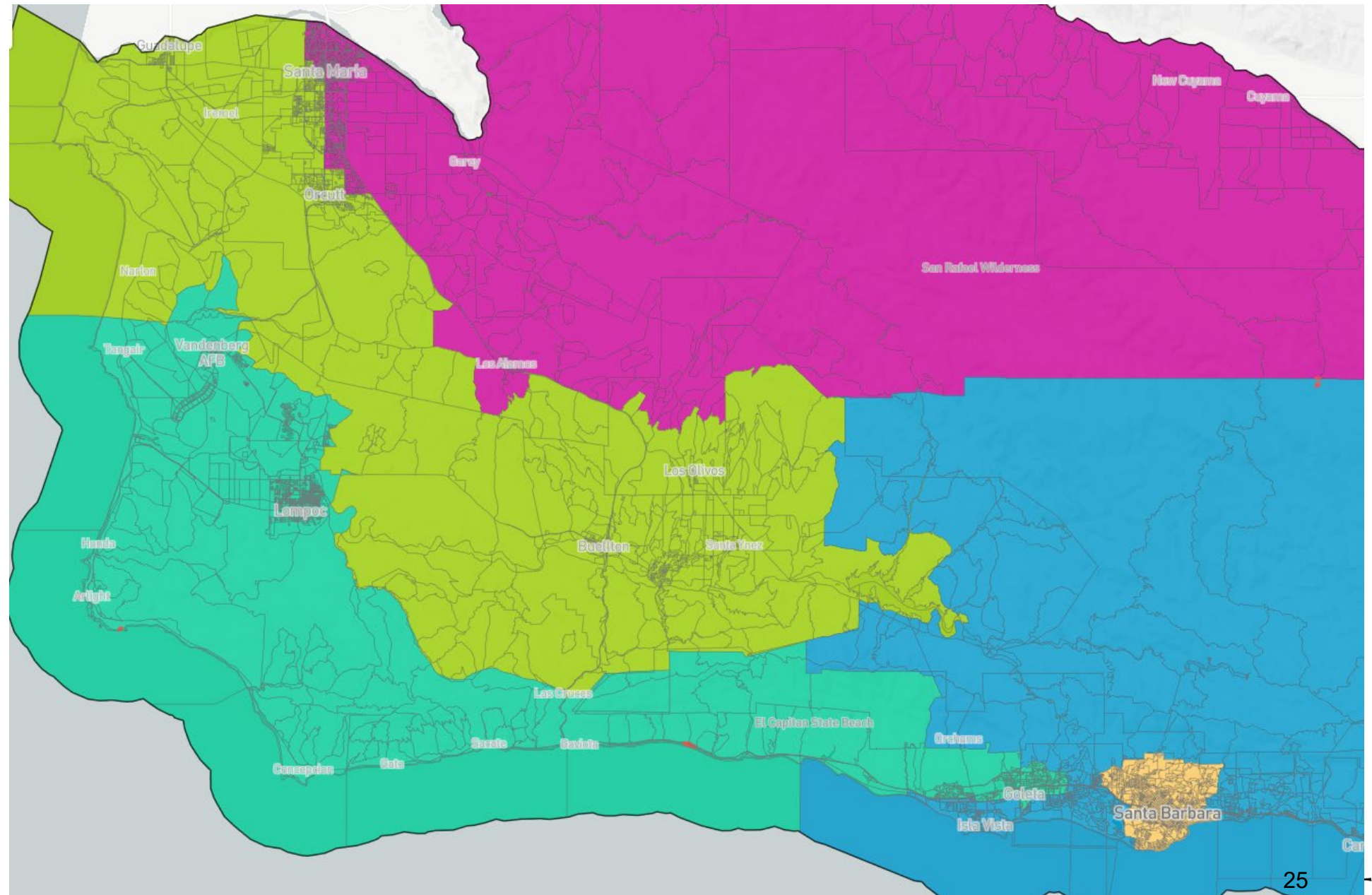
County Redistricting- Upcoming Timeline

Date	Tentative Meeting Purpose
November 8, 2021	New Deadline for Draft Maps & Written Comment
November 12, 2021	Presentation of Draft Maps, identify 3-5 focus maps (Round I), direction on any map modifications
November 15, 2021	Public Input on Focus Maps (Round I)
November 18, 2021	Public Input on Focus Maps (Round I)
November 22, 2021	Review Focus and Newly Submitted Maps Narrow to 3-4 focus maps (Round 2) Direction on map modifications.
December 01, 2021	Identify preferred map. Direction on map modifications, if any.
December 08, 2021	Adopt map.

Santa Maria's Request

- Advocate for cities in general to be considered “communities of interest” in the County supervisorial redistricting process
 - Community of interest = contiguous population which shares common social and economic interests that should be included within a single district for purposes of its effective and fair representation
- Advocate for the adoption of Santa Maria's preferred map (next slide)

SANTA MARIA'S PREFERRED MAP



SANTA MARIA'S PREFERRED SUPERVISORIAL MAP DETAIL OF GOLETA AREA



Santa Maria's Reasoning

1. Creates two minority majority districts, consistent with VRA priorities
2. Divides districts primarily by major throughfares rather than gerrymander
3. Maintains communities of interest including:
 - A. Comports with City of Santa Maria City Council resolution
 - B. Keeps VSFB, Lompoc, Mission Hills, Vandenberg Village, and the Federal Prison in the same District
 - C. Keeps the entire Santa Ynez Valley together including the Lake Cachuma Watershed
 - D. Keeps the Cities of Goleta and Santa Barbara as whole as possible.
 - E. Puts the two medium sized cities (Lompoc and Goleta) together for the first time. These two communities “share” some 10,000 commuters each day.
 - F. Restores Guadalupe with both Santa Maria and Orcutt districts and restores Cuyama and the City of Santa Maria’



Other Districting/Redistricting

District	Deadline to submit draft maps	Deadline for public comments	Anticipated adoption of map
Goleta Water District (1 st Districting)	N/A (drafts maps posted by 11/25)	1/14/2022	March 2022
Goleta Sanitary (1 st Districting)	Feb 2022	March 2022	April 2022
Goleta Union School Dist. (1 st Districting)	N/A	12/15/2021	12/15/2021
SB Unified School Dist. (1 st Districting)	N/A	12/14/2021	Jan-Feb 2022
State of California (Redistricting)	N/A (Release draft maps by 11/15)	3 days from final maps release (Est. 12/26/21)	12/27/2021

Questions for Council

County of Santa Barbara Redistricting

- Does Council wish to engage in the County's redistricting process?
- Should City of Goleta be in a single supervisorial district or divided into two+ supervisorial districts?
- If Goleta is divided into two+ supervisorial districts, where should the dividing line be?
- What non-City of Goleta areas should also be included in those same district(s)?

City of Santa Maria Request

- Should the City advocate for cities in general to be considered "communities of interest" in the County supervisorial redistricting process?
- Should the City advocate for the adoption of Santa Maria's preferred map, included as Attachment 3?

Questions for Council

Other Districting Processes

- Does Council wish to provide guidance and authorize official engagement in any of the other processes?

**Goleta Water District
Goleta Sanitary
Goleta Union School Dist.
SB Unified School Dist
State of California**

ATTACHMENT 5

Santa Barbara County Redistricting - Presentation 11-3-2021



Santa Barbara County **REDISTRICTING**

DrawSantaBarbaraCounty.org

Rules For Drawing the Lines

In accordance with federal, state, county law, the Commission must draw lines pursuant to the following criteria, which are listed in order of priority:

1. Federal Laws

- US Constitution – reasonable equal population and no racial gerrymandering
- Federal Voting Rights Act

2. State Law and Measure G Requirements

1. California Voting Rights Act
2. Geographical-contiguity
3. Undivided neighborhoods and “communities of interest”
4. Undivided cities and Census designated place
5. Easily identifiable boundaries
6. Compact
7. Topography, geography, and cohesiveness

3. Other Traditional Redistricting Principles

- Future population growth
- Minimize voters shifted to different election years

In addition, the Commission is prohibited from considering the residence of any incumbent or political candidate and districts shall not be drawn for purposes of favoring or discriminating against an incumbent, political candidate, or political party.

What do the Plan Numbers Mean?

- 100s: DistrictR Full Plans (all five districts)
- 200s: DistrictR Partial Plans (fewer than five districts)
- 300s: DistrictR Communities of Interest
- 400s: Plans Derived from CSV Files (all are full plans)
- 500s: MOR Plans (all are full plans)
- 600s: Paper Participation Kit Plans (all are full plans)
- 700s: NDC Plans (all are full plans)

How Many Plans Were Submitted?

100s: 38 DistrictR Full Plans (not including works in progress)

200s: 1 DistrictR Partial Plan (two districts)

300s: 5 DistrictR Communities of Interest

400s: 8 CSV Files

500s: 3 MOR Plans

600s: 2 Paper Participation Kit Plans

700s: 5 NDC Plans

57 Public Submissions, 62 Total

Was My Plan Included?

As long as you submitted your plan before the initial deadline of October 18th, your plan should have been included

However, if you were using DistrictR, it was only included if you selected “Share Now” to save it to the Public Gallery; if you selected “Work in Progress” to save it as a draft, it was not included

You can check to make sure that your plan was included by going to “View Draft Maps” on the website and opening the Plan Summary Table; then you can check to see if your DistrictR or MOR ID is listed there

If you submitted a CSV file or paper map, go through the 400s and 600s to check if your map is there, or send an email seeking confirmation

If you submitted a plan *after* October 18th, it should be included in time for the next meeting, **so long as it is submitted by November 8th**

How Can I Check if the Plan I Submitted is Population Balanced?

Given that the mapping tools were only recently updated with the official population data, any plans submitted using the estimated population data may not be population balanced according to the official population data, even if they appeared to be so according to the estimated population data

If you submitted a CSV file or paper map, you can send an email seeking confirmation that it is indeed balanced

If you open the Plan Summary Table, you can check to see if the plan associated with your DistrictR or MOR ID is actually balanced

If the far right column says “Yes,” then you do not need to modify your original submission to make it balanced; it already is

If that column gives a percentage value, then that means your plan is not balanced, because that value needs to be less than 10%

What Can I Do to Modify My Unbalanced Plan so that it is Balanced?



If you submitted a CSV file that you got using Dave's Redistricting App, make sure that your Census field was set to "Total Pop (Adj) 2020", redraw your map, get a new CSV file, and resubmit that by email

If you submitted a plan using MOR or a paper map, please resubmit using the updated versions now posted on the "Draw a Map" page

If you submitted a plan using DistrictR, **you must start a new drawing by clicking the purple button "built out of 2020 blocks"; if you click on your original version that you made with the estimated data and try to edit that, it will not adjust for the new official data, but continue to use the estimated data**

If you would like to use your original version as a template, you can have that open in another tab and try to do your best to replicate it as you make a new drawing

Once you are done, make sure to select "Share Now" to save it to the Public Gallery; drafts are not shared with the Commission

Please do so by November 8th; after that date, submitted plans that are not population balanced will be flagged as nonviable

All newly/re-submitted maps will be posted in advance of the November 12th meeting

An Important Note about Using DistrictR

When you are using DistrictR, please be mindful of what the percentage value displayed at the bottom right side of the page is actually showing you

It is showing the maximum population deviation, which takes the district that is furthest away from the ideal (either over or under), and tells how much it deviates from that ideal

This is not the same thing as the total population deviation that we are talking about in our discussion, which is the sum of the absolute values of the greatest positive deviation and the greatest negative deviation

To illustrate with DistrictR ID 71198, District 1 has the maximum population deviation of 5.28%, which is also the greatest negative deviation

But this absolute value needs to be added to the greatest positive deviation, which is 4.04%, because District 3 is 3,606 over, which is then divided by the ideal of 89,341

This yields a total population deviation of 9.32%, which is still balanced, but just barely so

So to be safe, aim for a maximum population deviation that is under 5%, or make sure to make the proper calculations

A Note about District Numbering

An attempt was made to keep the numbering of the districts consistent across all the plans, with consistent coloring as well

This means that District 1 is always based in Downtown Santa Barbara, District 5 is always based in Downtown Santa Maria, and Districts 2, 3, and 4 proceed in a south to north fashion as one would travel up US 101 from Santa Barbara to Santa Maria

District 1 is pink

District 2 is blue

District 3 is green

District 4 is purple

District 5 is orange

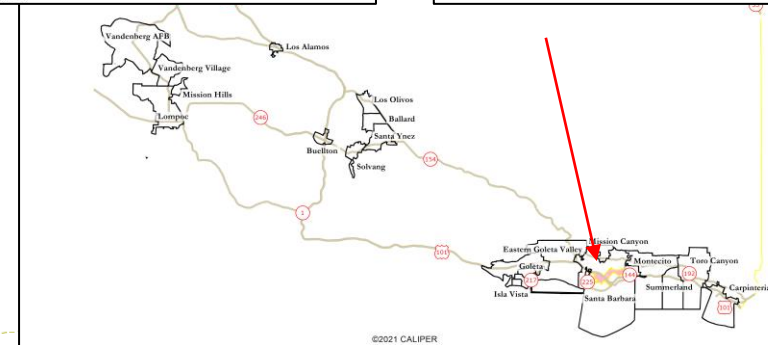
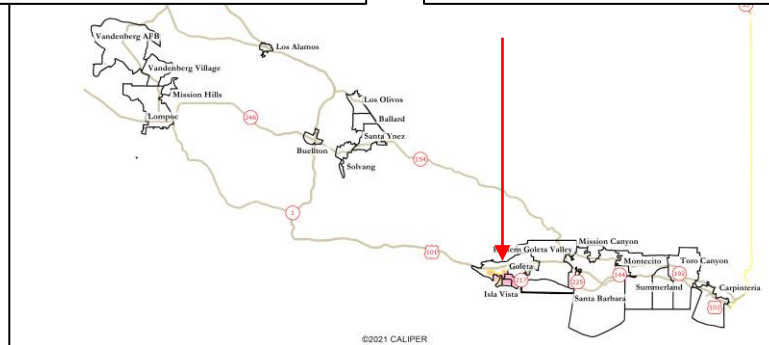
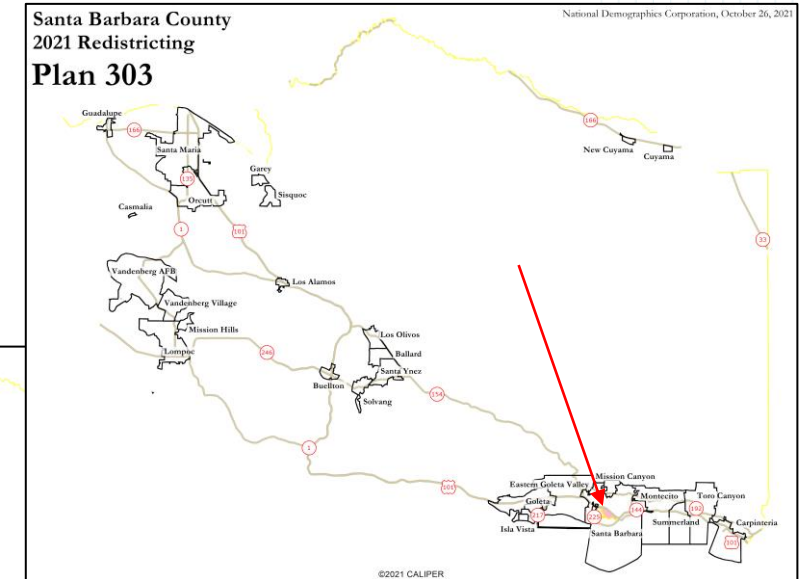
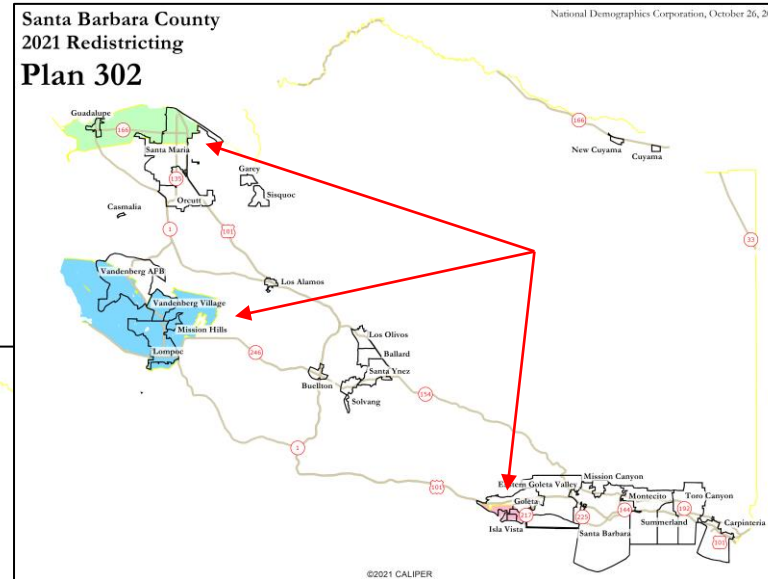
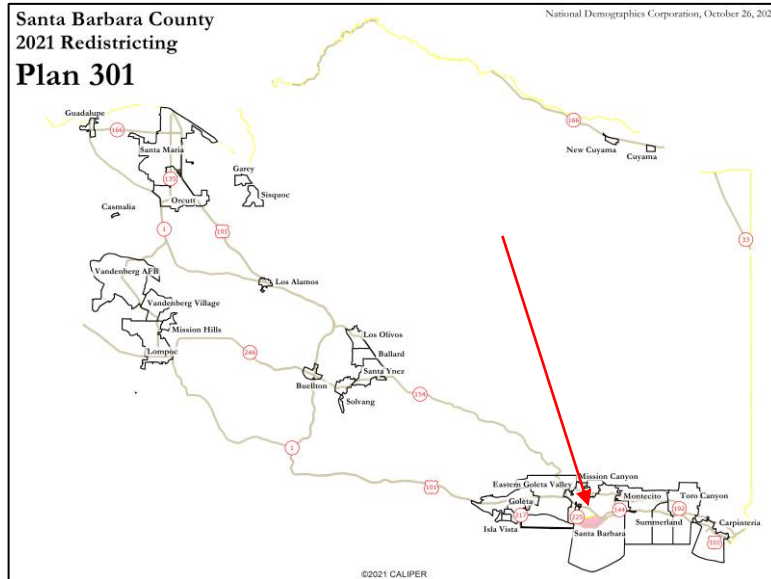
What Key Stats are Shown on the Map of Each Plan?

Total Population Deviation: The difference in population between the most populated district and the least populated district, divided by the ideal population of a district – should be less than 10%

Maximum Latino CVAP: The highest value among all districts for the proportion of the citizen voting age population that is Latin

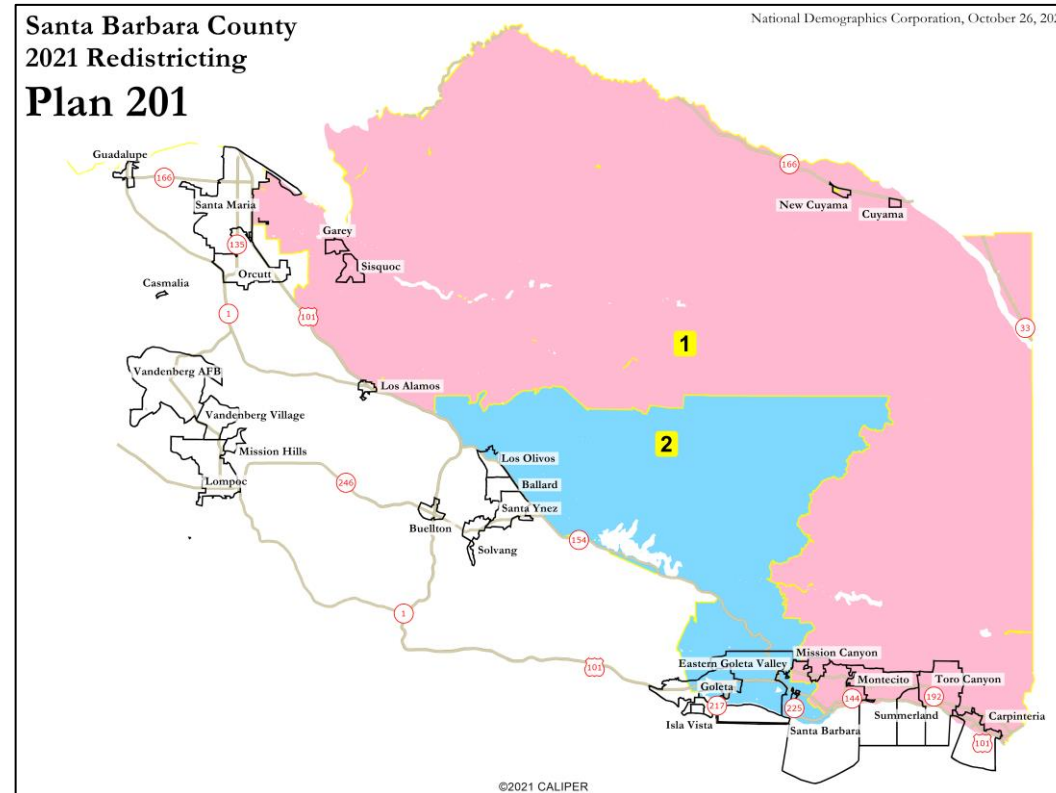
Number of Split Places: The number of Census places (either incorporated cities or unincorporated Census-designated places) that are split between multiple districts – the fewer the better

Communities of Interest: 5 Submissions, 1 of Which Has Multiple

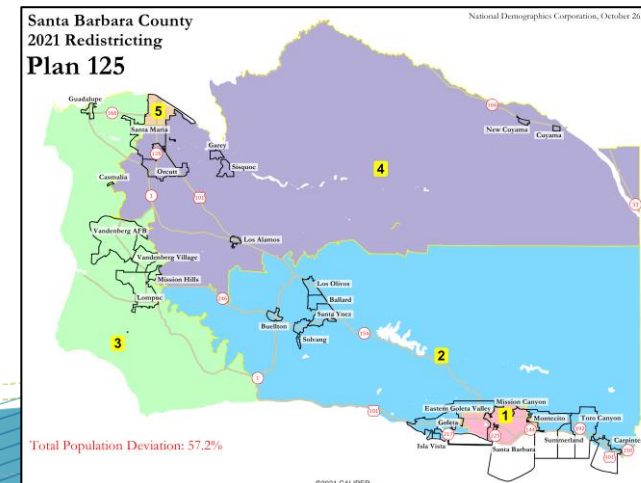
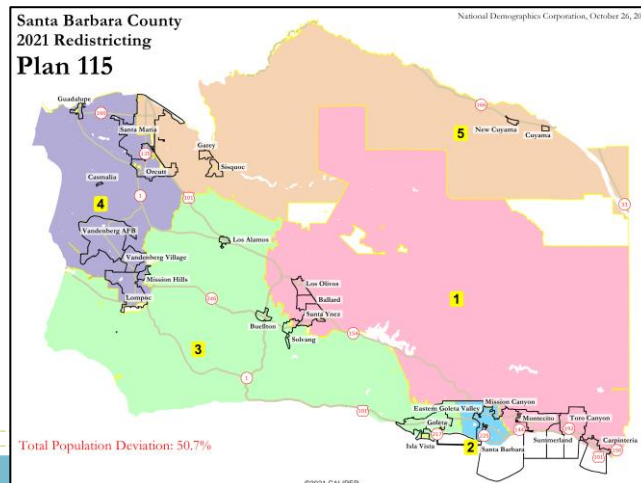
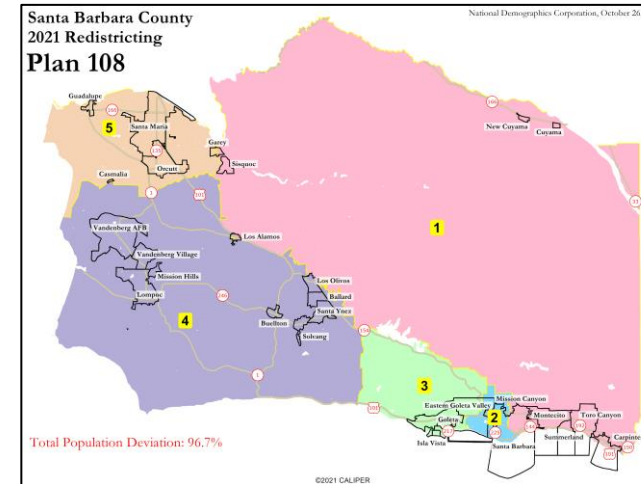
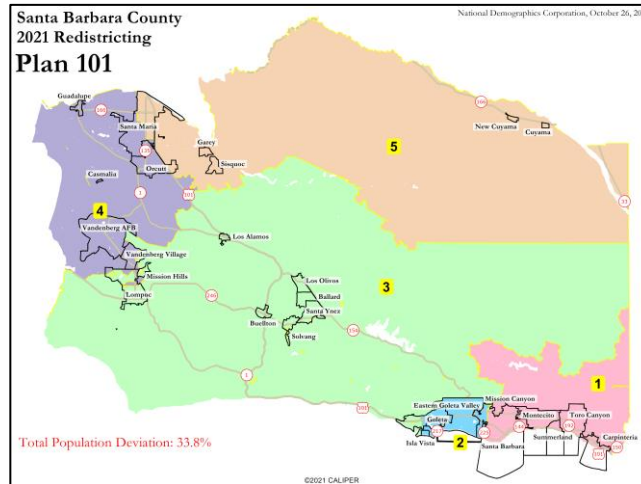


Nonviable Plans:

1 Partial Plan



Nonviable Plans: 4 Not Close to Population Balanced



Viable Plans Grouped as so:

Given that the population of South County is too large to fit into two districts, but too small to fit into three, which area of South County gets excluded from the two districts that are wholly based there?

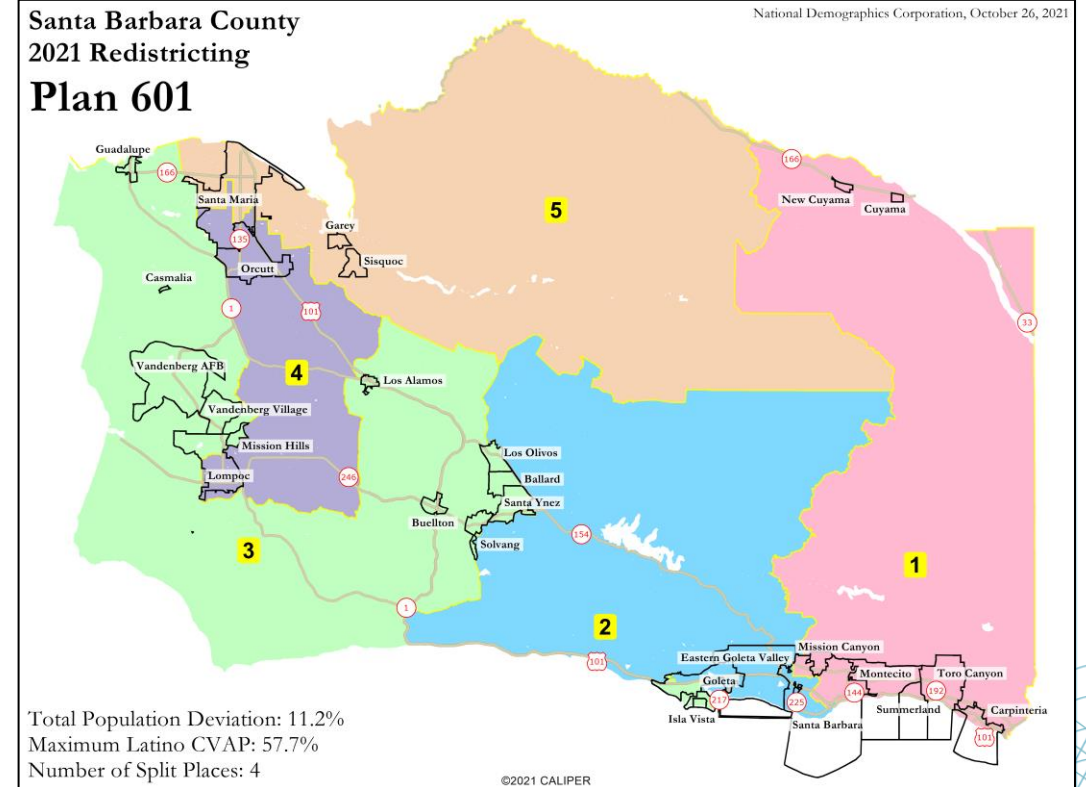
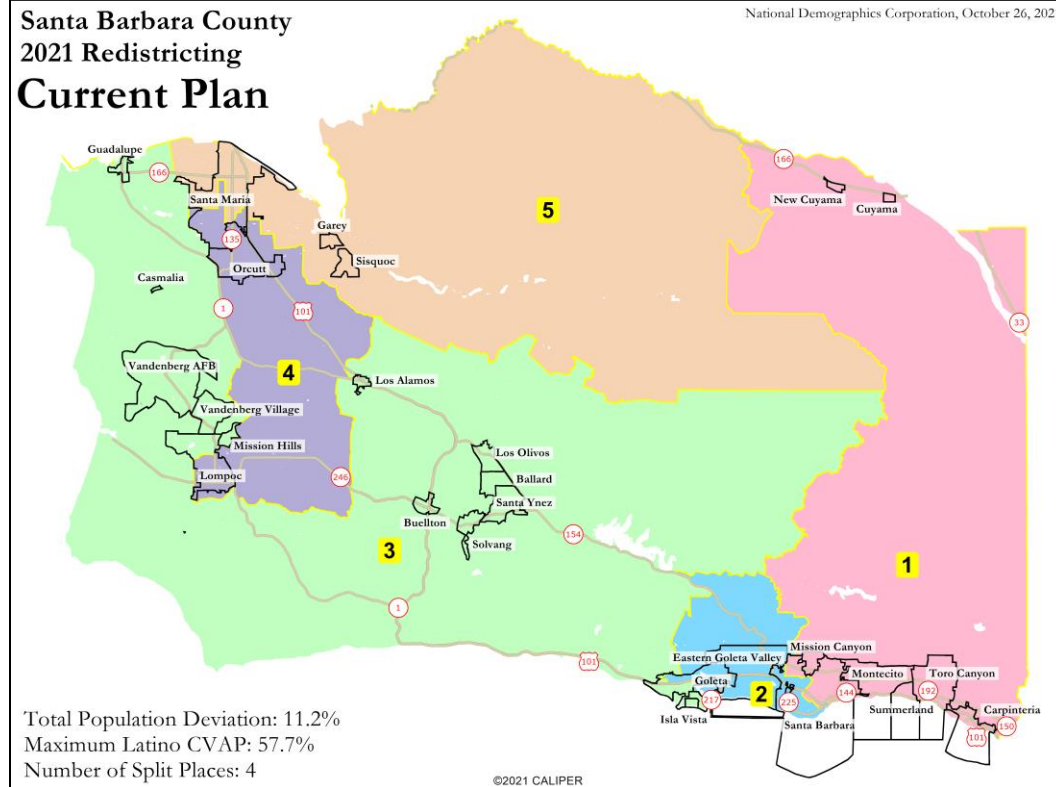
- Southwest Goleta Valley (Isla Vista, UCSB, and southwestern Goleta)
- West Goleta Valley (Isla Vista, UCSB, and western Goleta)
- Goleta (the whole city)
- Northwest Goleta Valley (western Goleta and that portion of Eastern Goleta Valley that is north of US 101)
- North Goleta Valley (those portions of Goleta and Eastern Goleta Valley that are north of US 101)
- Eastern & Foothill Areas (Carpinteria, Montecito, and areas that are north of CA 192)

Viable Plans Grouped as so:

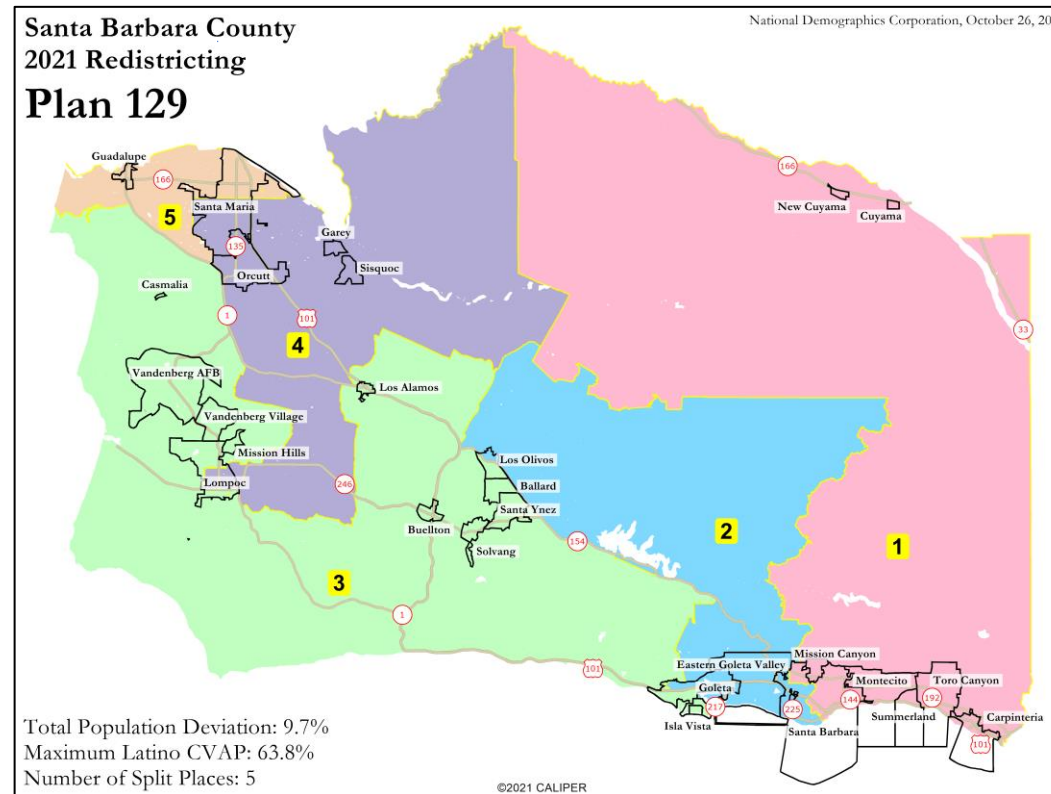
And which area(s) of Central and/or North County does that area of South County join with to form a third district?

- Santa Ynez Valley
- Lompoc
- Vandenberg
- Guadalupe
- Orcutt
- Santa Maria

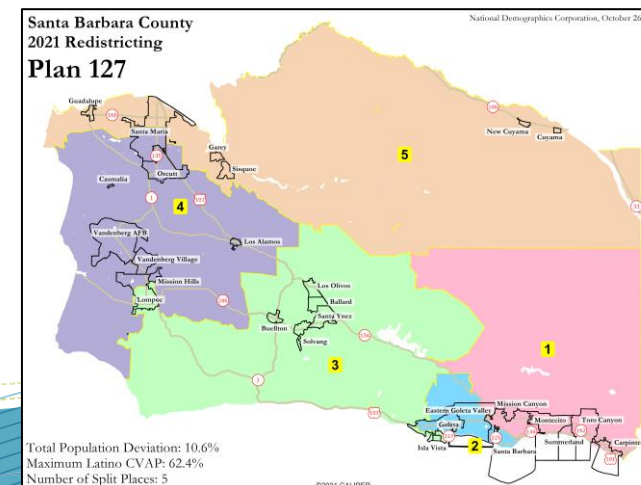
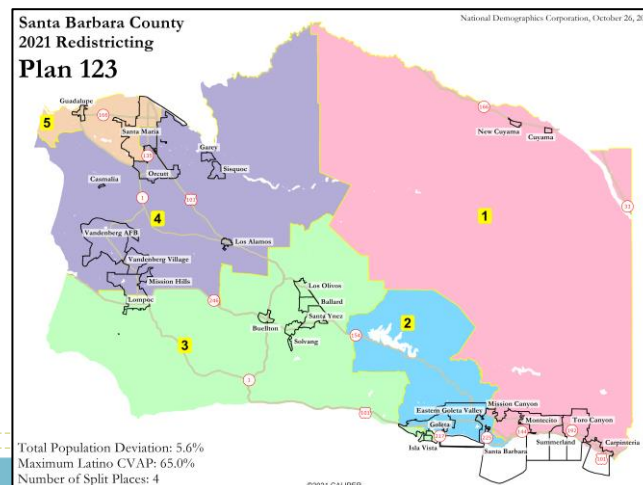
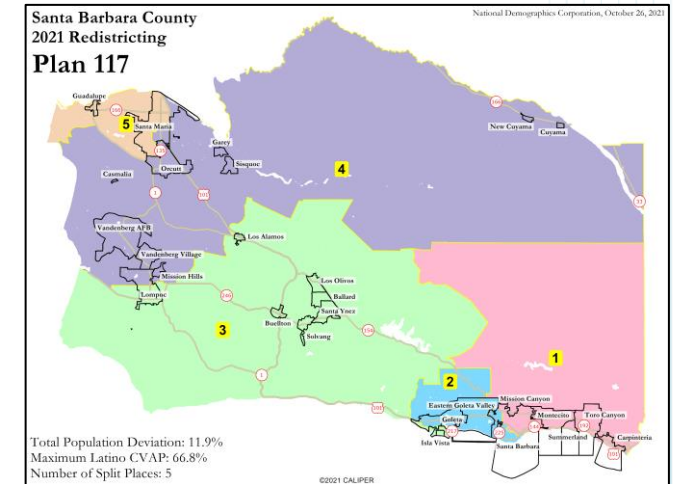
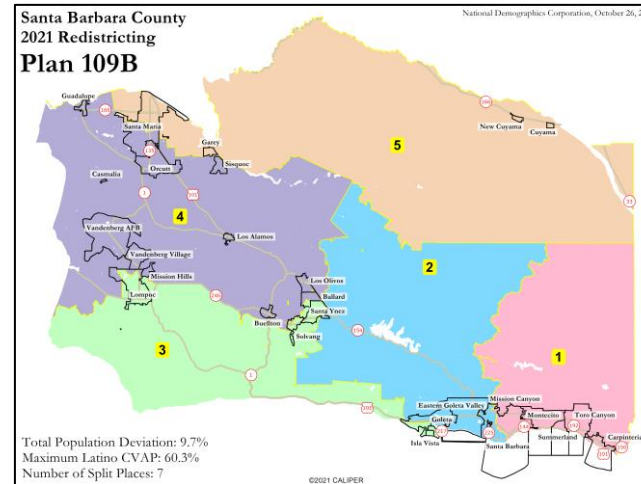
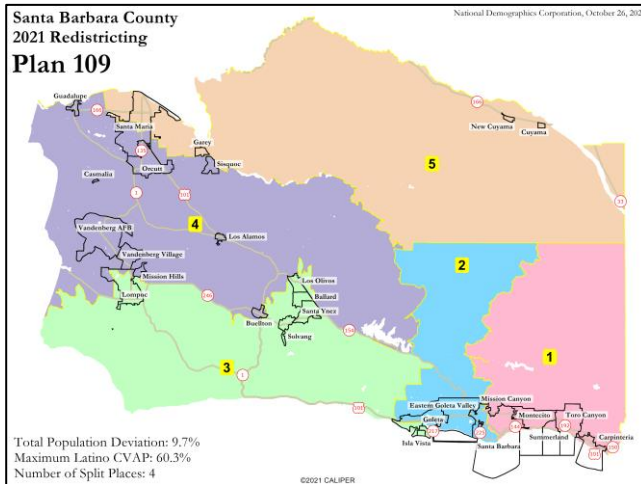
Excluding Southwest Goleta Valley: 2 Plans Joining it with Santa Ynez Valley, Vandenberg & Guadalupe



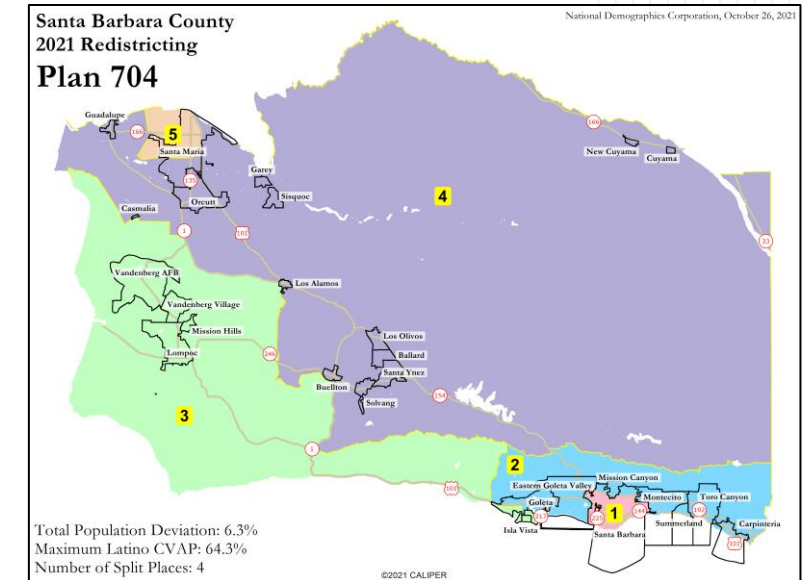
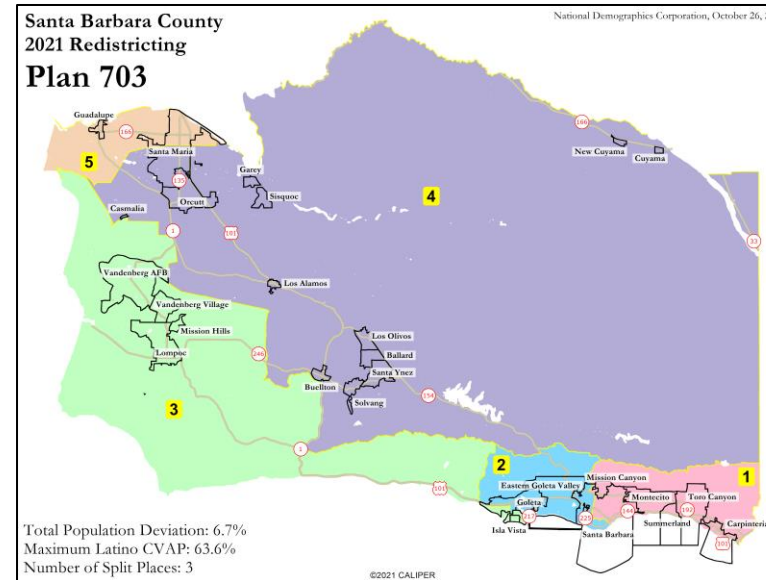
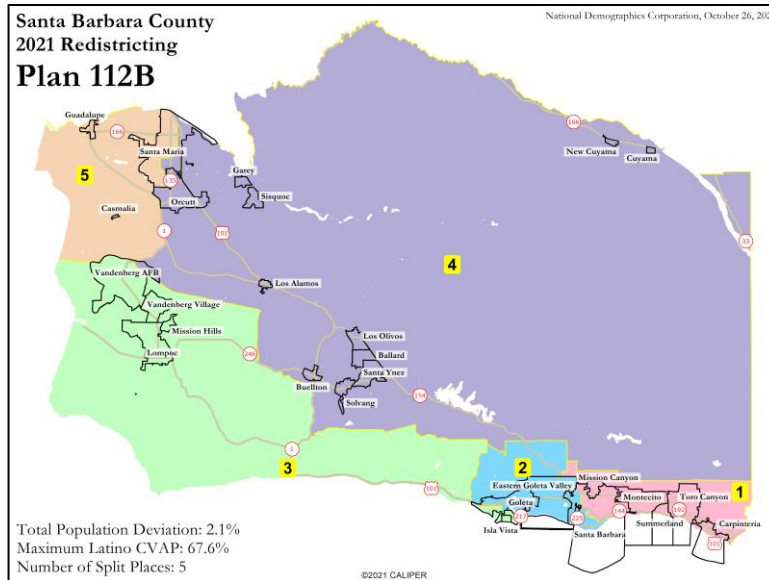
Excluding Southwest Goleta Valley: 1 Plan Joining it with Santa Ynez Valley, Lompoc & Vandenberg



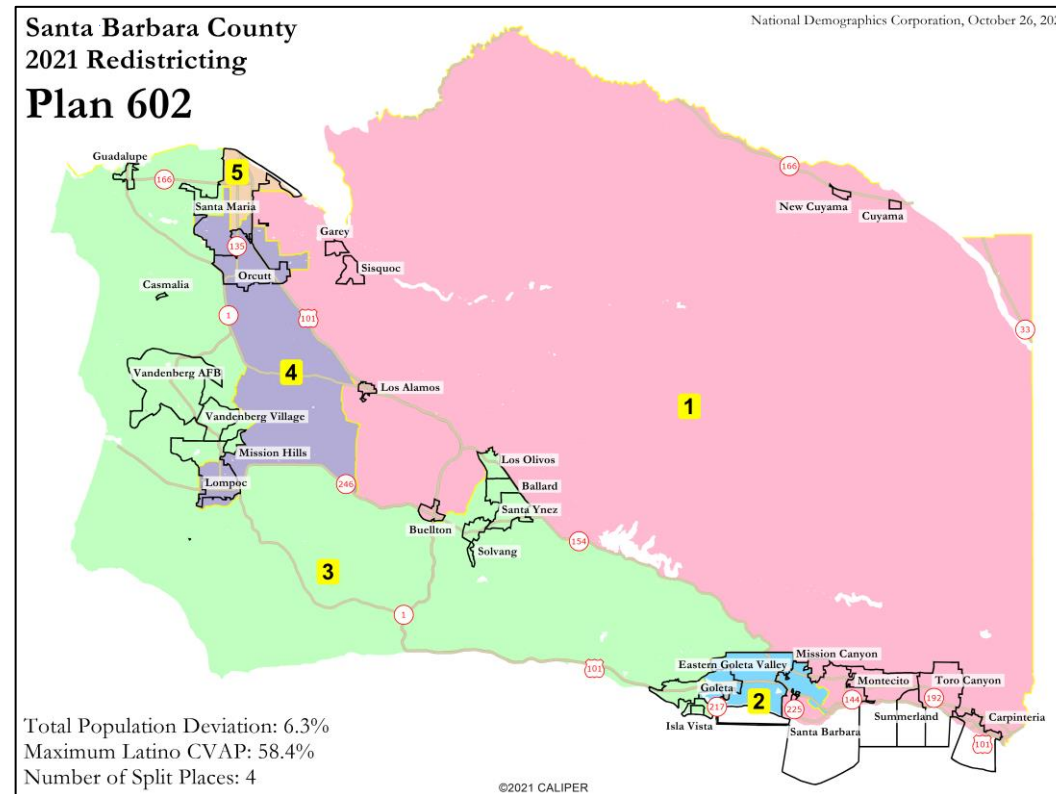
Excluding Southwest Goleta Valley: 5 Plans Joining it with Santa Ynez Valley & Lompoc



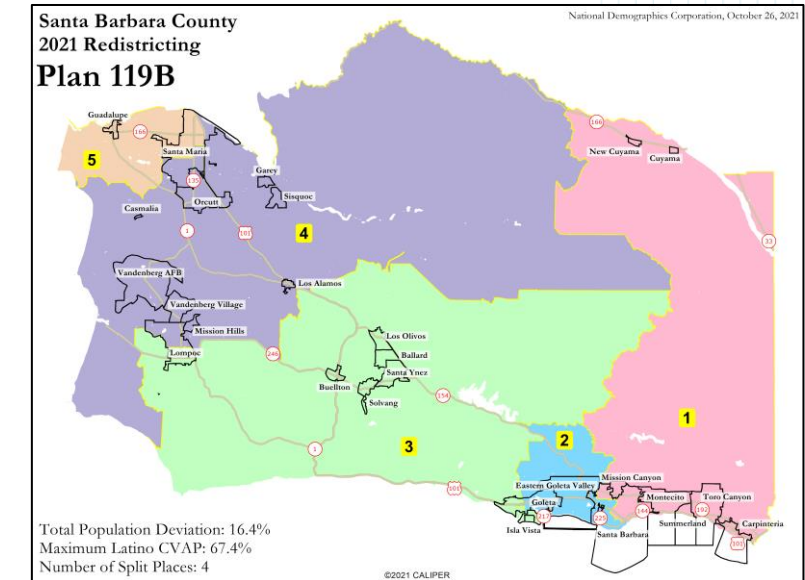
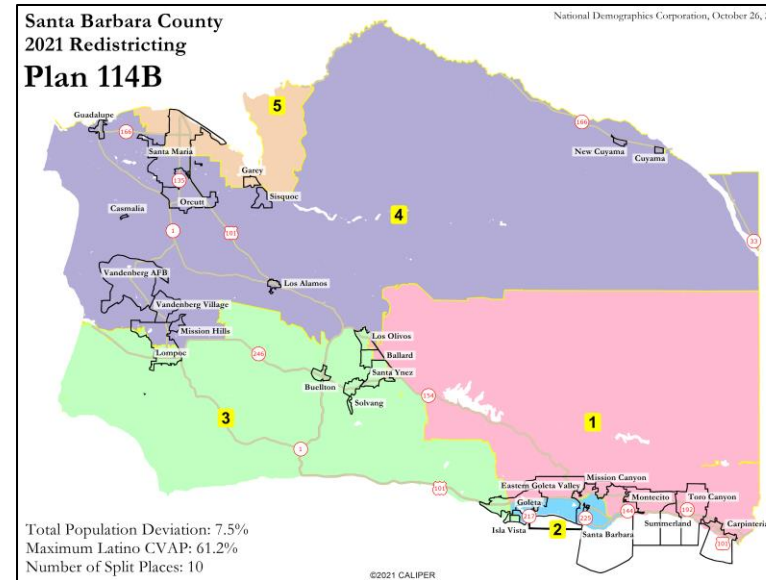
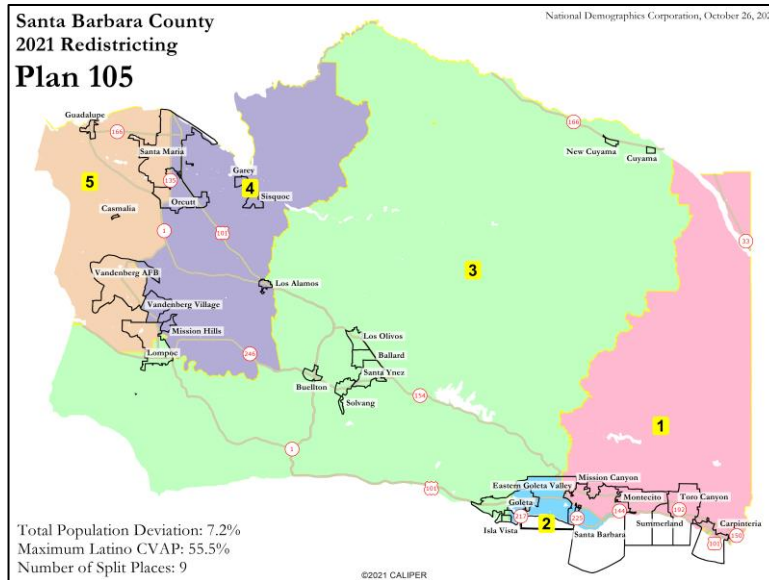
Excluding Southwest Goleta Valley: 3 Plans Joining it with Lompoc & Vandenberg



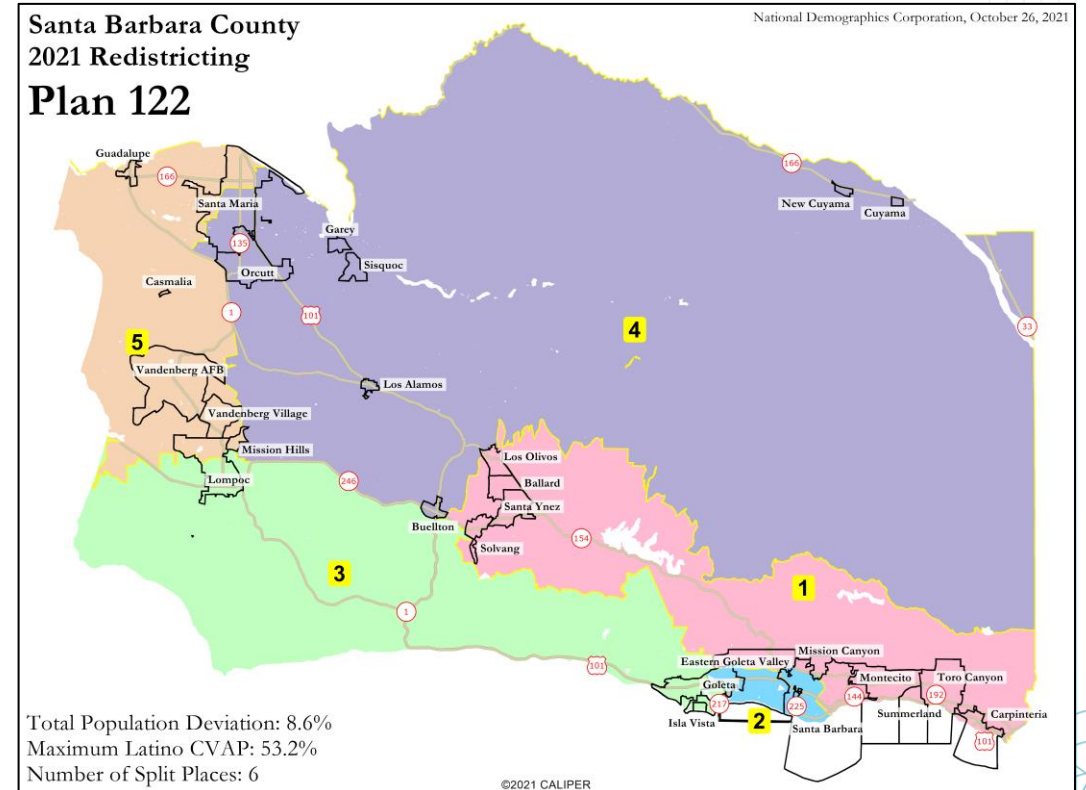
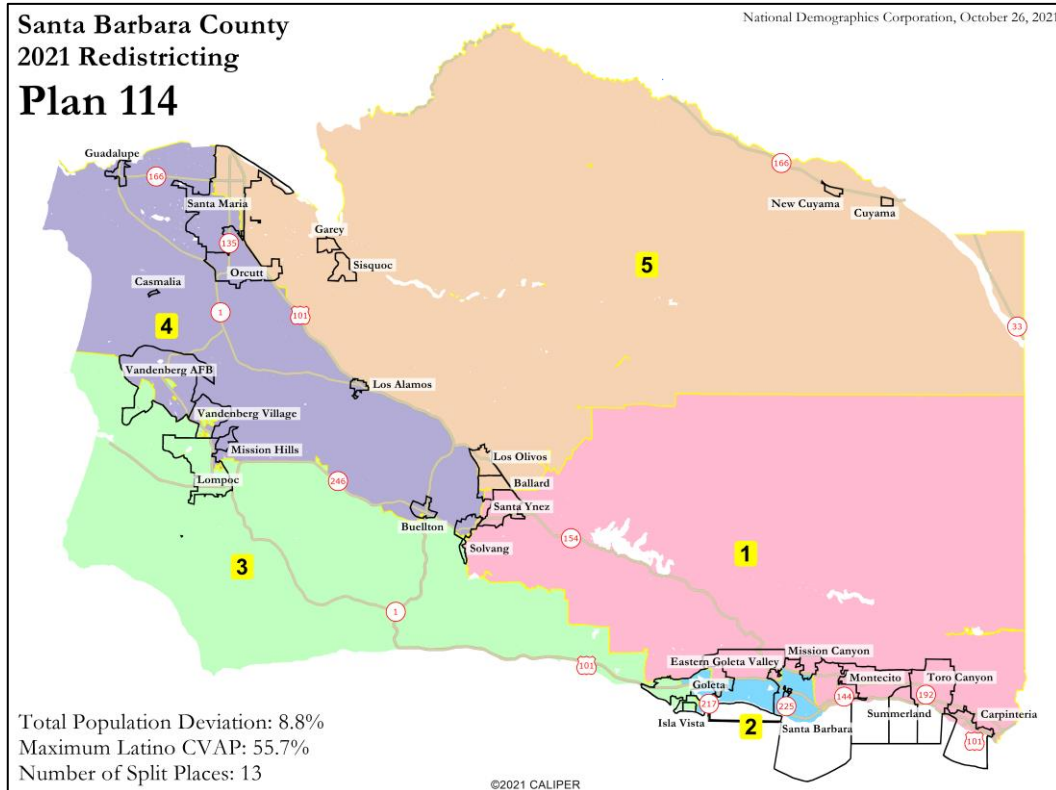
Excluding West Goleta Valley: 1 Plan Joining it with Santa Ynez Valley, Vandenberg & Guadalupe



Excluding West Goleta Valley: 3 Plans Joining it with Santa Ynez Valley & Lompoc

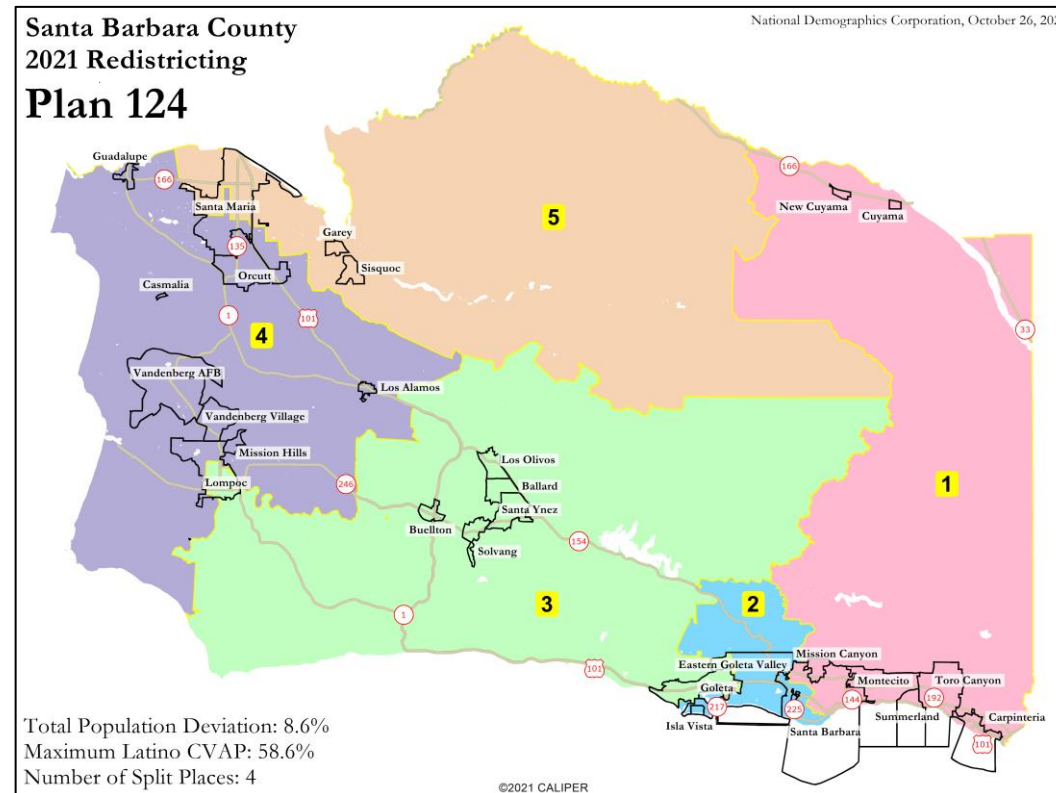


Excluding West Goleta Valley: 2 Plans Joining it with Lompoc

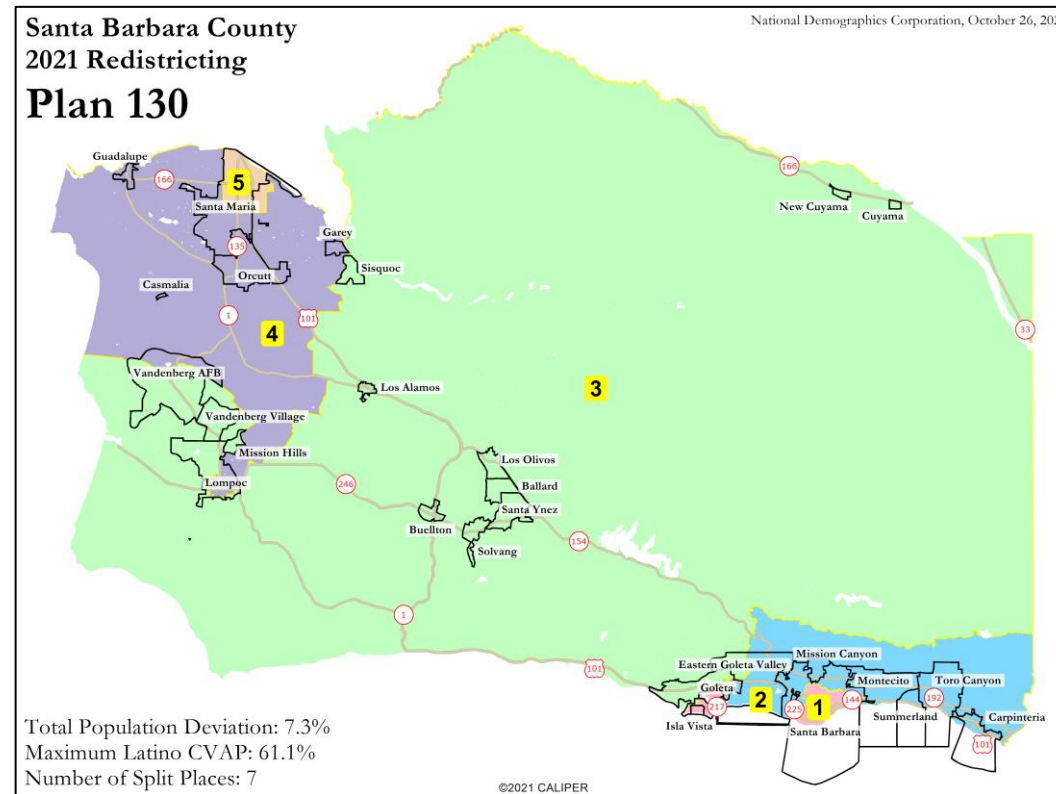


Excluding Goleta:

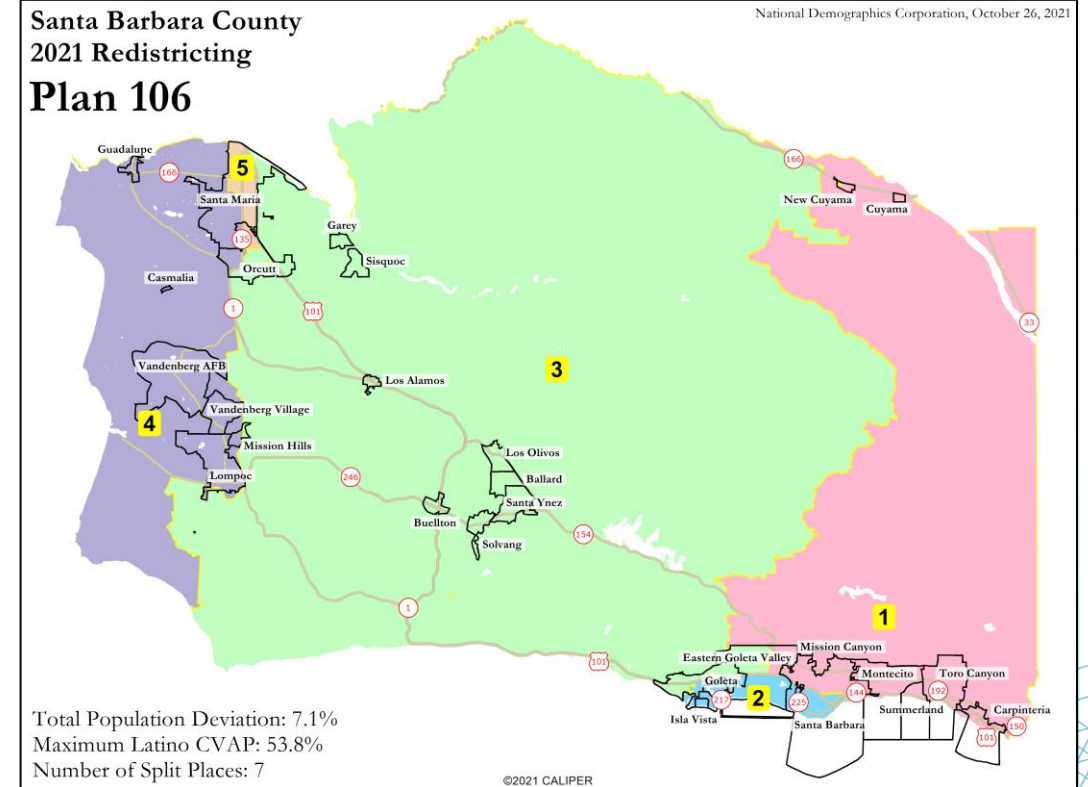
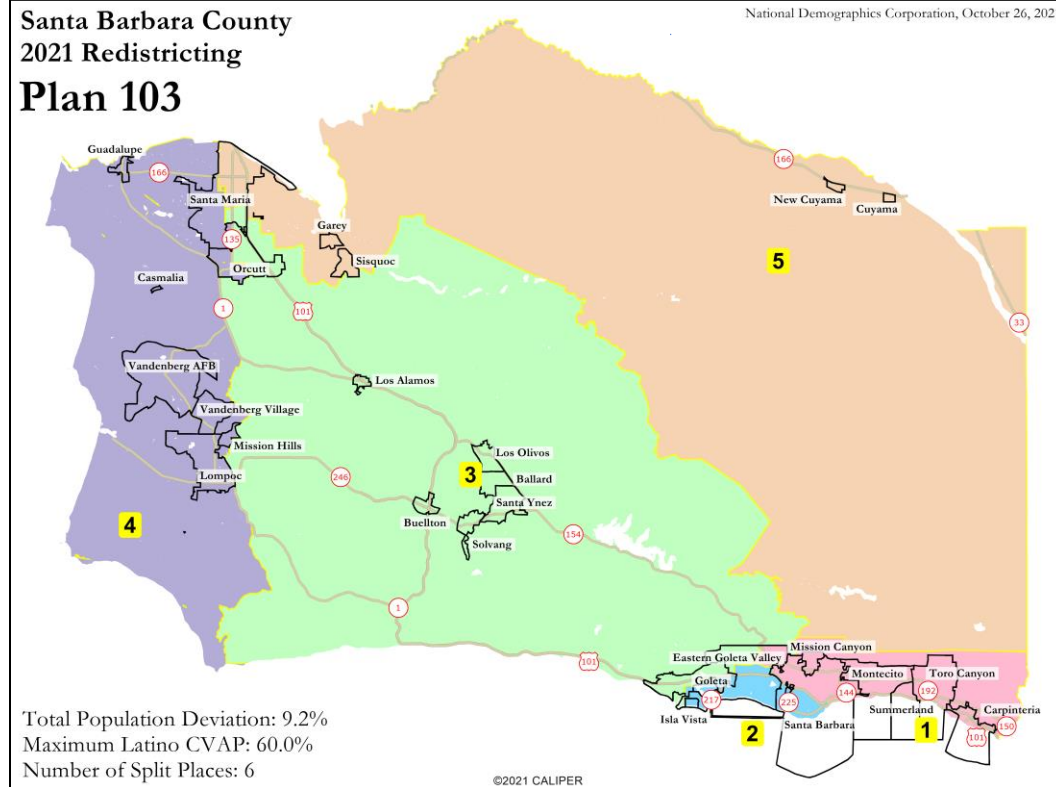
1 Plan Joining it with Santa Ynez Valley & Lompoc



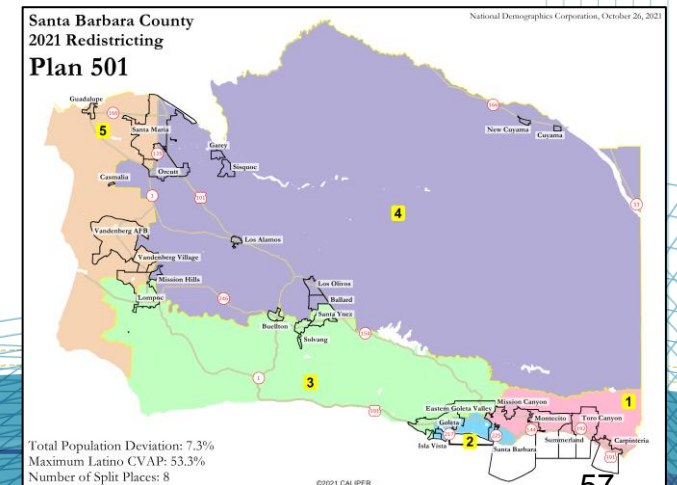
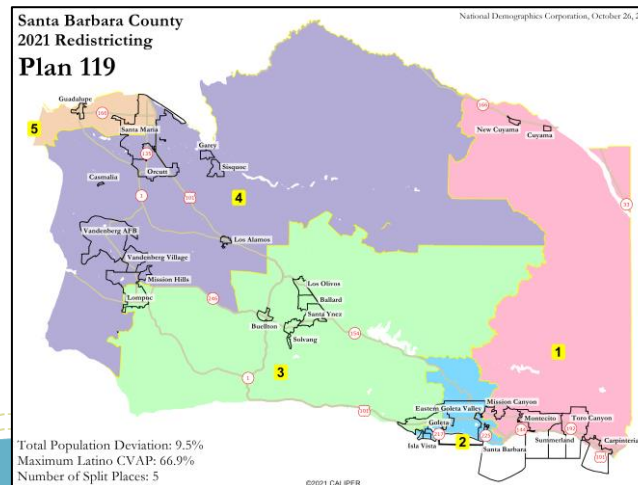
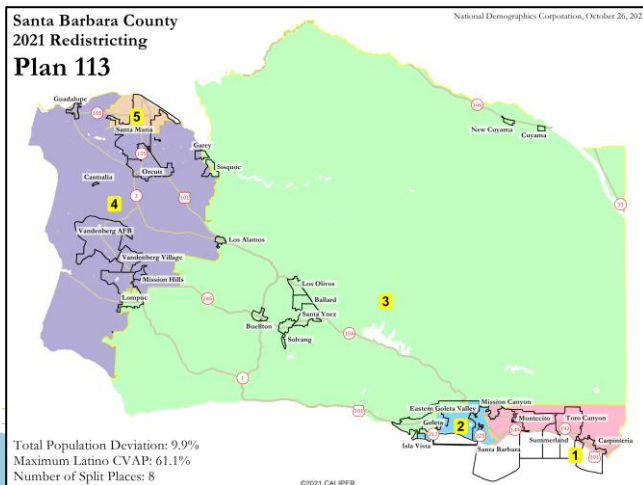
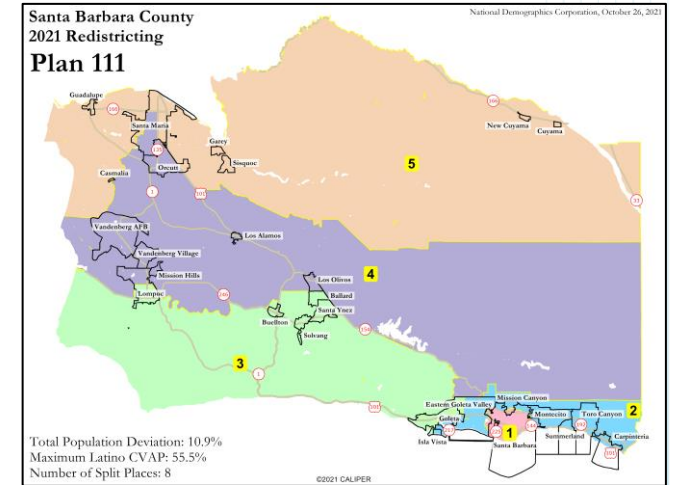
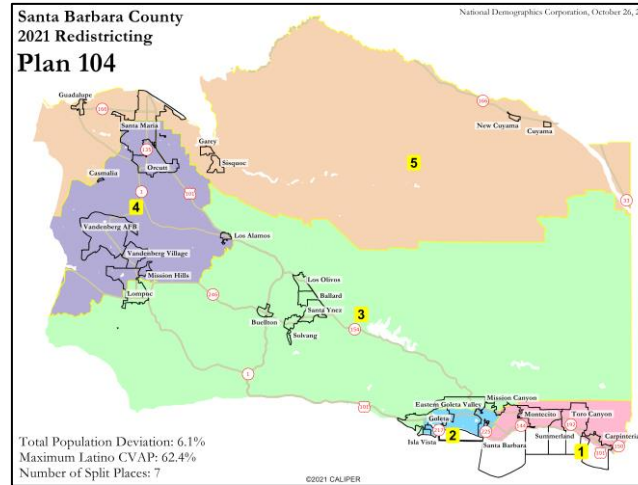
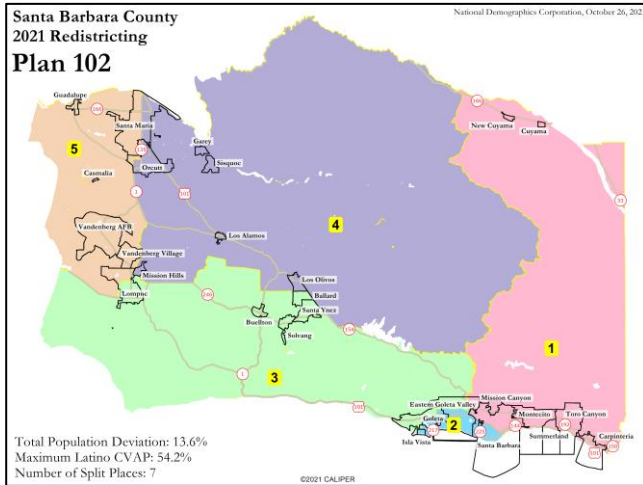
Excluding Northwest Goleta Valley: 1 Plan Joining it with Santa Ynez Valley, Lompoc & Vandenberg



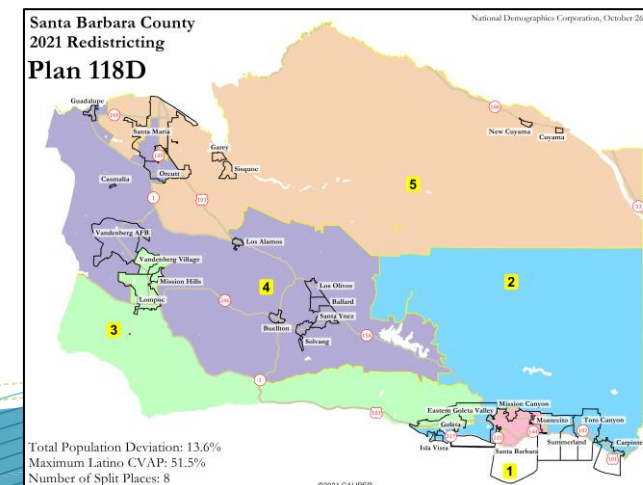
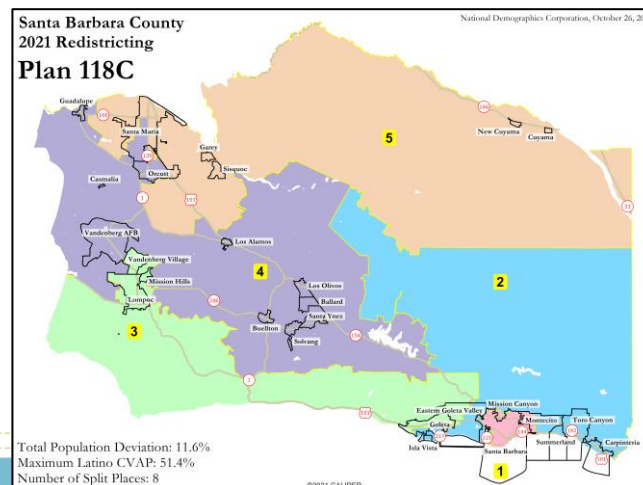
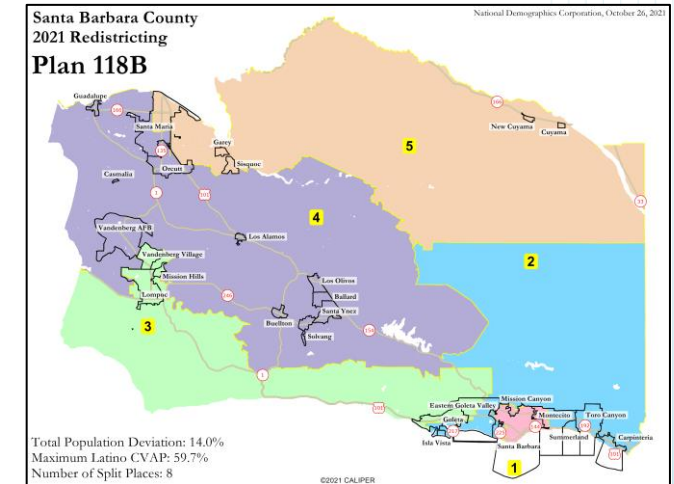
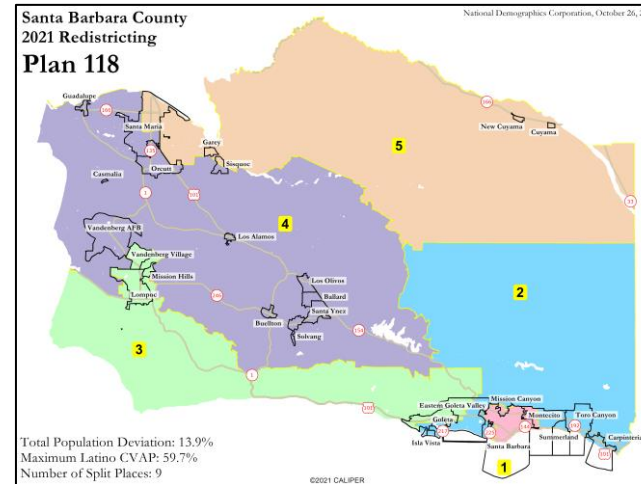
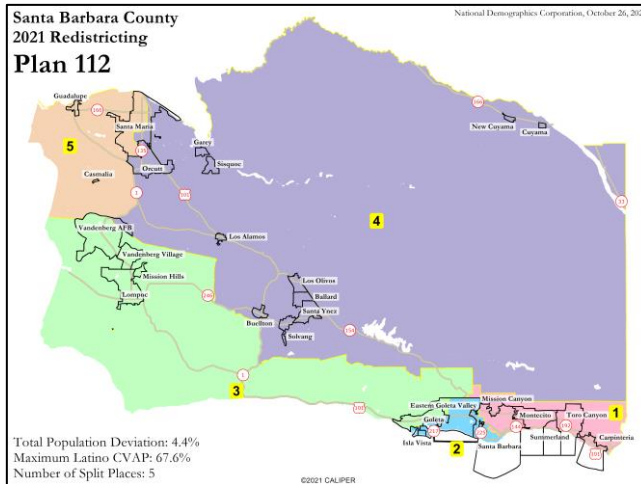
Excluding Northwest Goleta Valley: 2 Plans Joining it with Santa Ynez Valley, Orcutt & Santa Maria



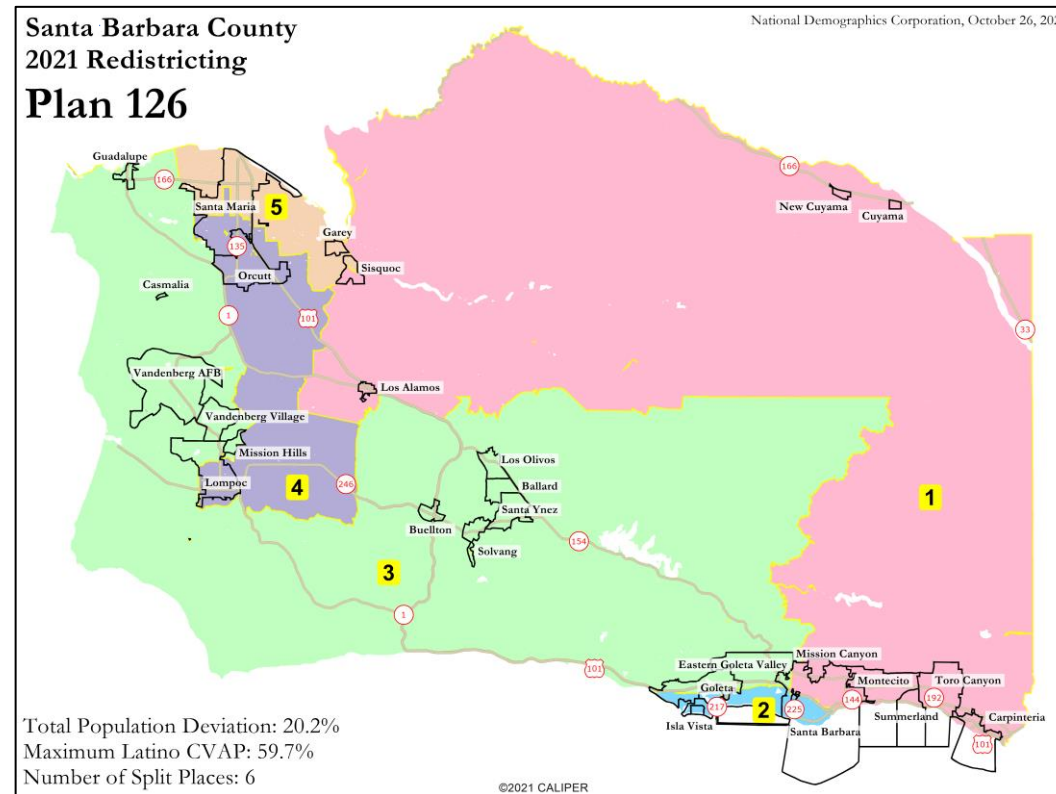
Excluding Northwest Goleta Valley: 6 Plans Joining it with Santa Ynez Valley & Lompoc



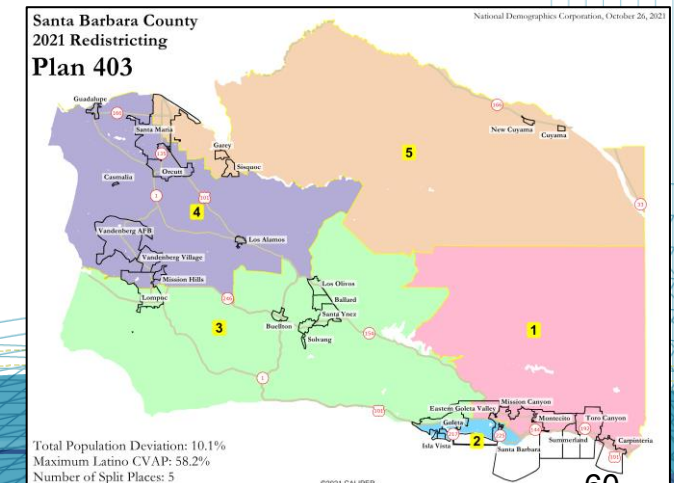
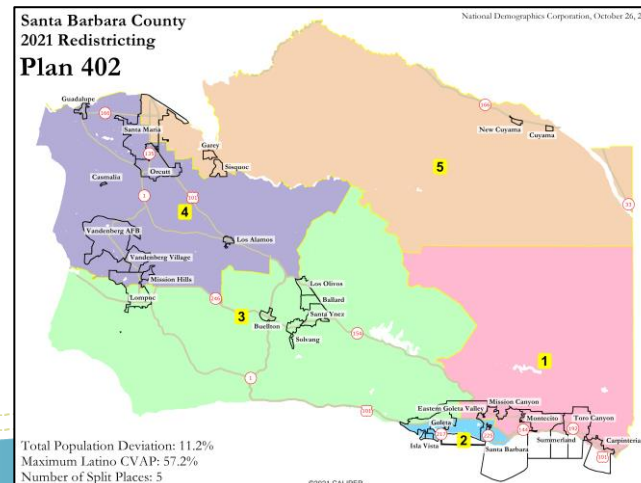
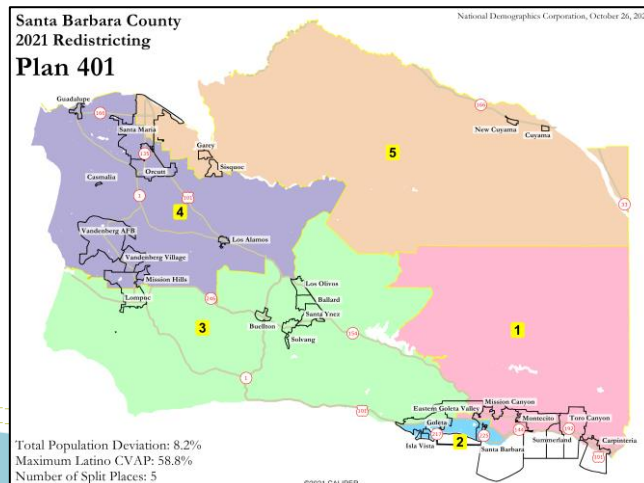
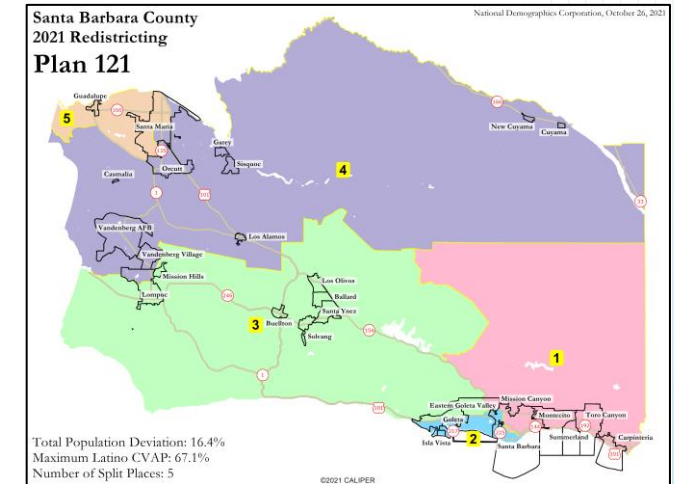
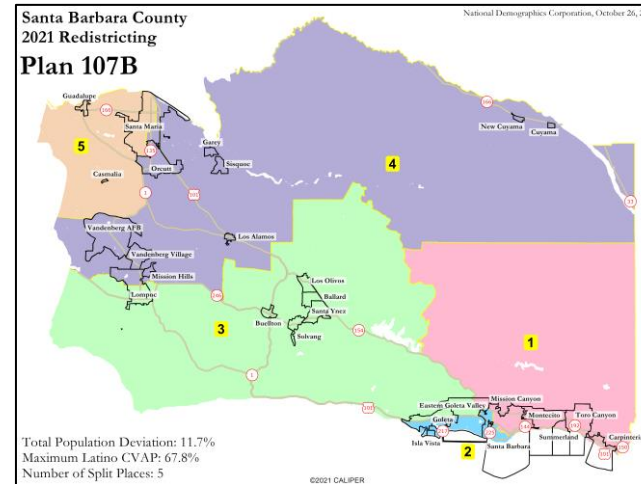
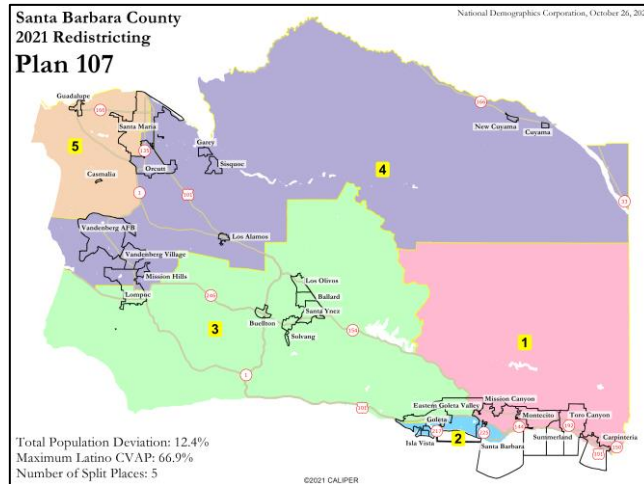
Excluding Northwest Goleta Valley: 5 Plans Joining it with Lompoc & Vandenberg



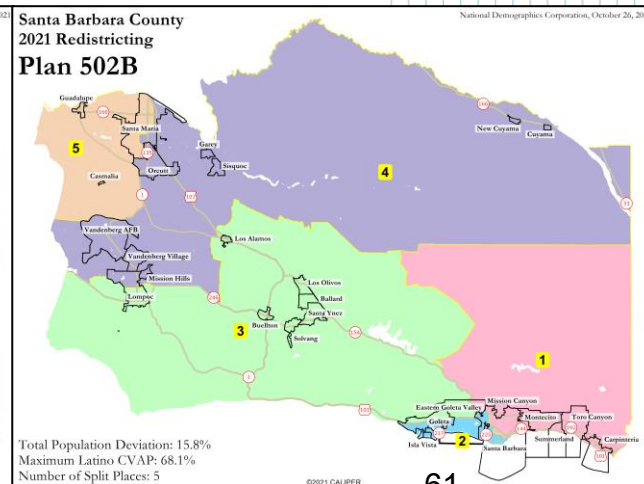
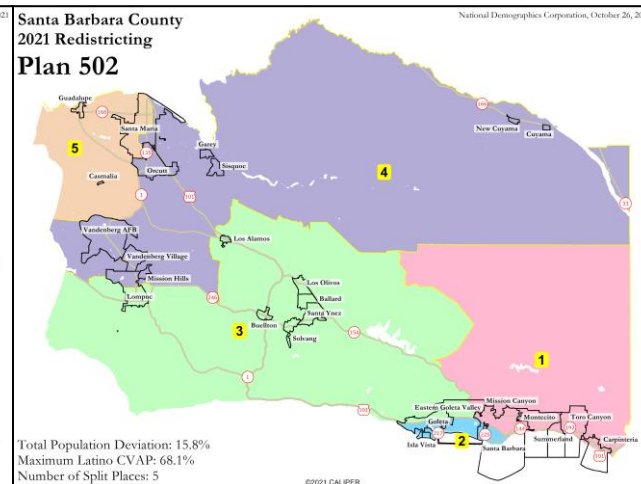
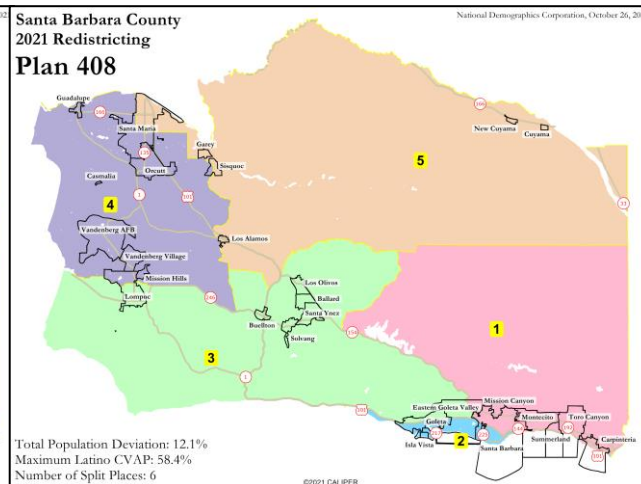
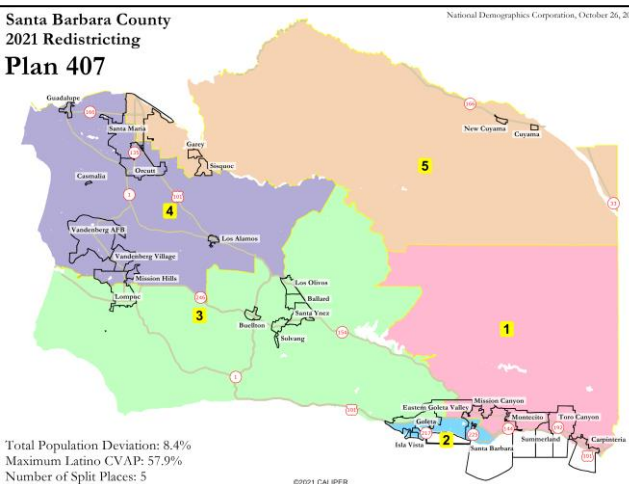
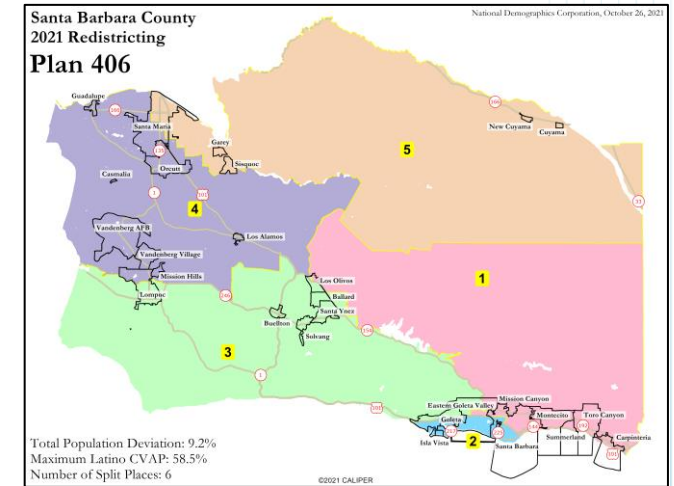
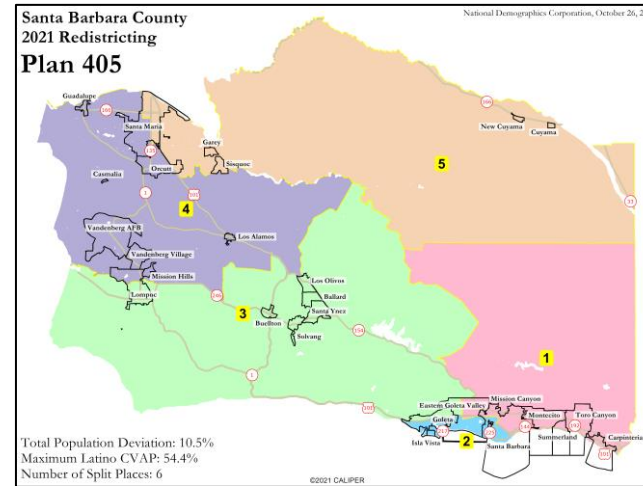
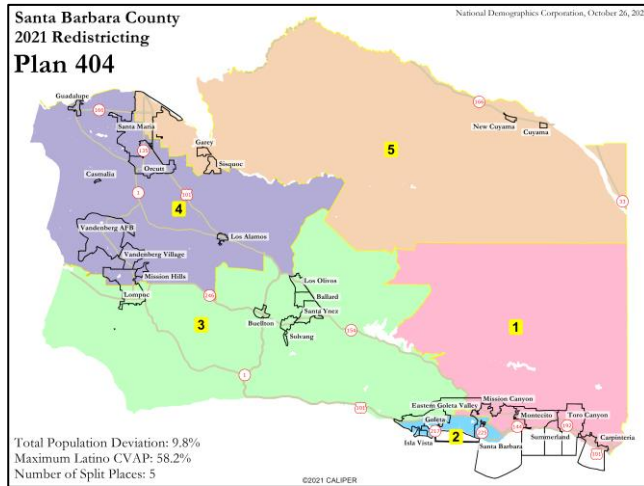
Excluding North Goleta Valley: 1 Plan Joining it with Santa Ynez Valley, Vandenberg & Guadalupe



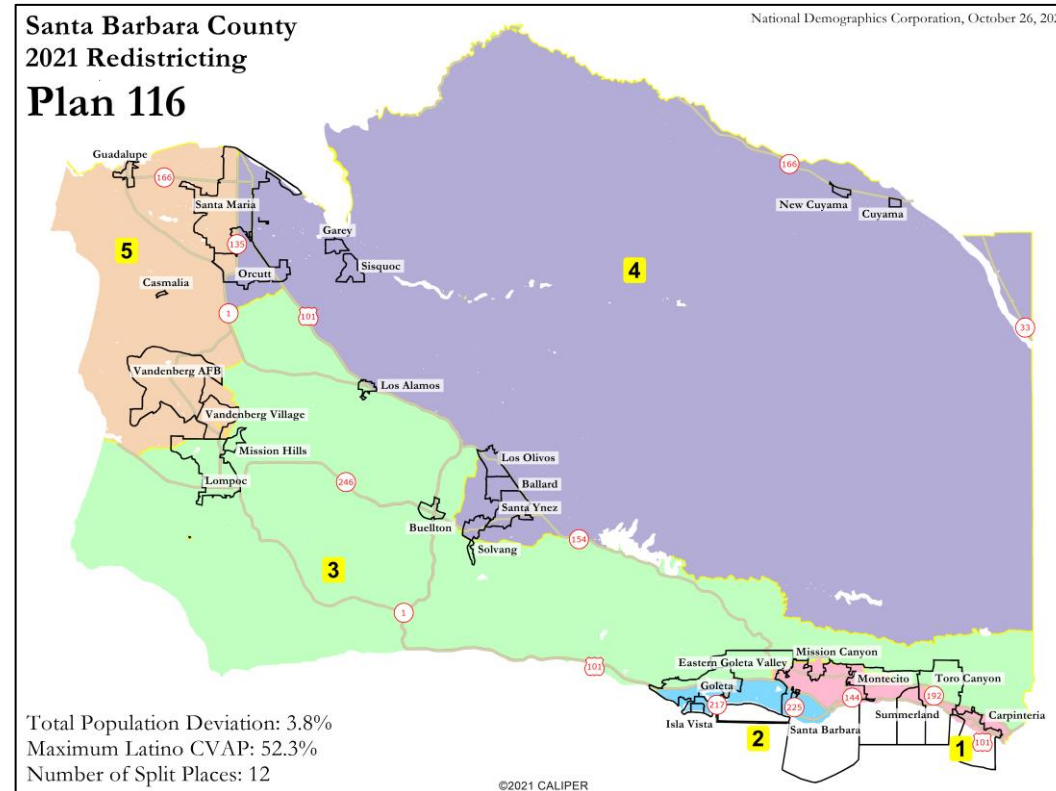
Excluding North Goleta Valley: 13 Plans Joining it with Santa Ynez Valley & Lompoc



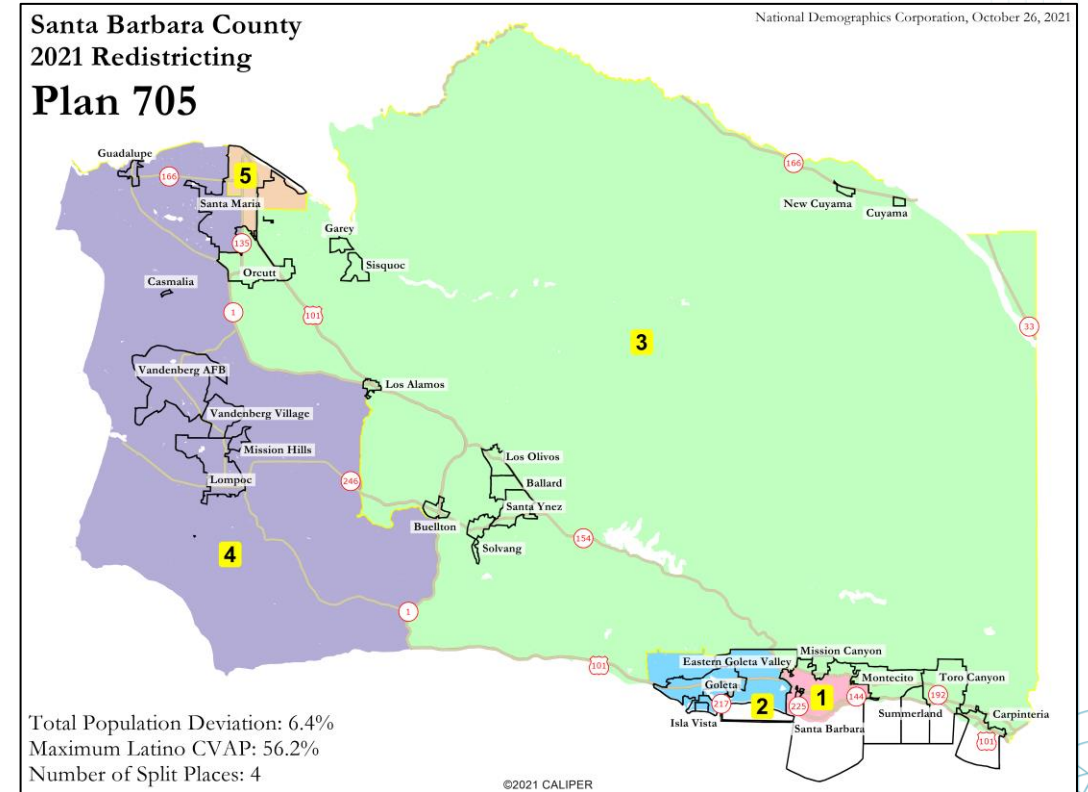
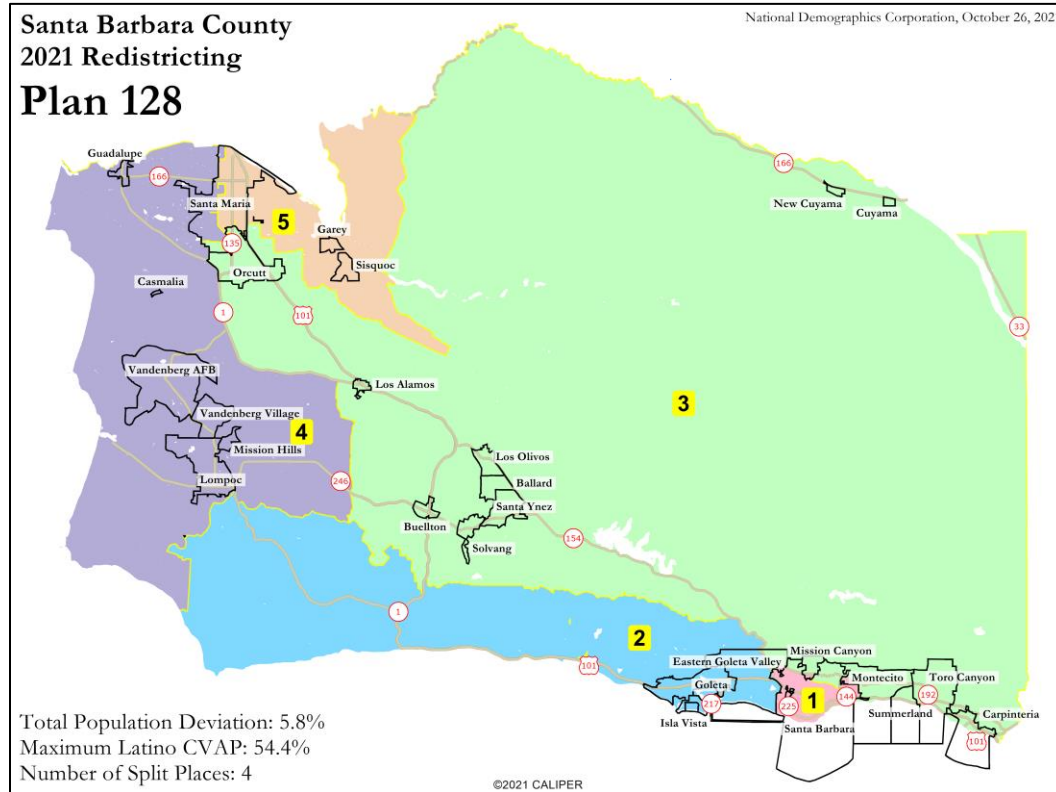
Excluding North Goleta Valley: 13 Plans Joining it with Santa Ynez Valley & Lompoc



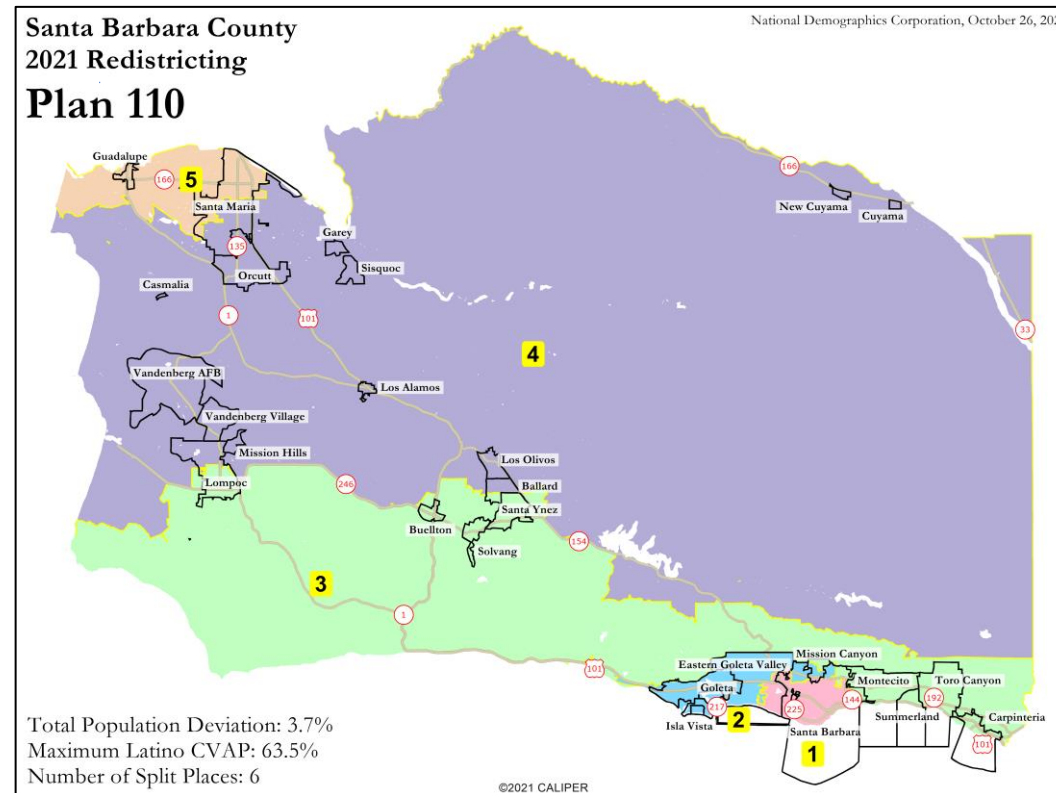
Excluding North Goleta Valley: 1 Plan Joining it with Lompoc



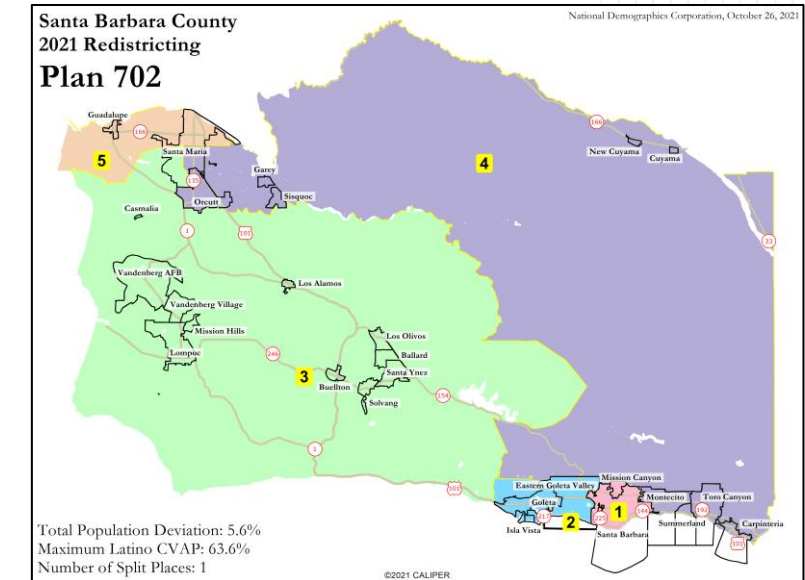
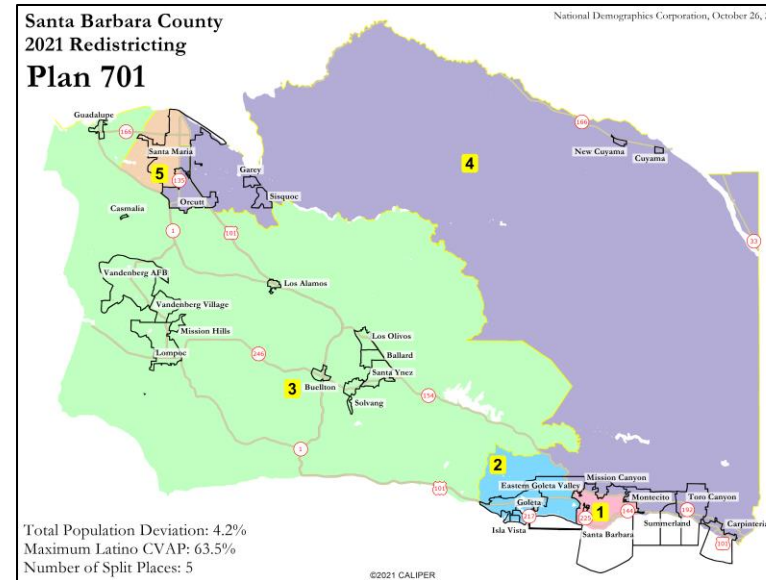
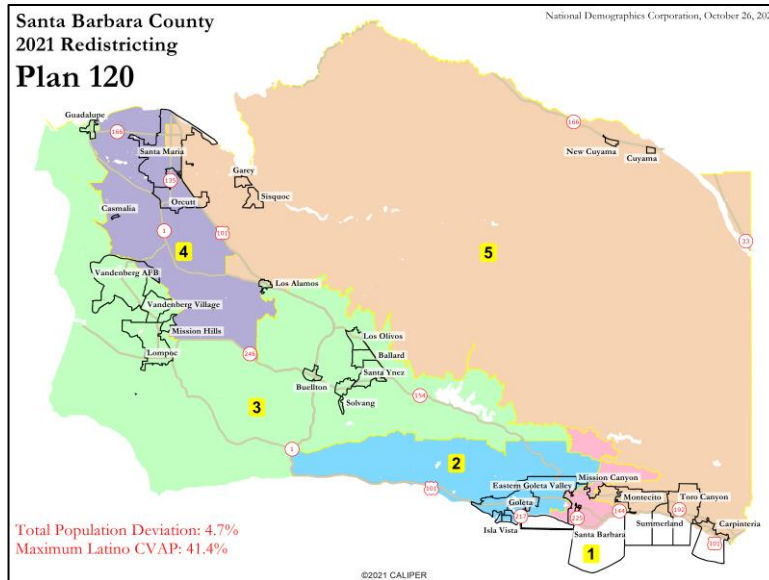
Excluding Eastern & Foothill Areas: 2 Plans Joining them with Santa Ynez Valley & Orcutt



Excluding Eastern & Foothill Areas: 1 Plan Joining them with Santa Ynez Valley & Lompoc



Excluding Eastern & Foothill Areas: 3 Plans Joining them with Orcutt & Santa Maria



Public Hearing & Discussion

Questions about the proposed redistricting plans?

Is there a particular plan from each group or subgroup that jumps out at you or that you want to focus on?

Which combination of South County and Central/North County makes the most sense to you?

Please visit the [Interactive Review Map](#) on the Draw a Map page on the website for a more detailed look at each draft plan

Next Meeting

Wednesday
November 12, 2021
3:00 p.m. to 5:00 p.m.

Planning Commission Room
123 East Anapamu Street
Santa Barbara, CA

DrawSantaBarbaraCounty.org